

# *Observed and simulated precipitation responses in wet and dry regions 1850–2100*

Article

Supplemental Material

Liu, C. and Allan, R. P. (2013) Observed and simulated precipitation responses in wet and dry regions 1850–2100. *Environmental Research Letters*, 8 (3). 034002. ISSN 1748-9326 doi: <https://doi.org/10.1088/1748-9326/8/3/034002>  
Available at <http://centaur.reading.ac.uk/33433/>

It is advisable to refer to the publisher's version if you intend to cite from the work. See [Guidance on citing](#).

Published version at: <http://dx.doi.org/10.1088/1748-9326/8/3/034002>

To link to this article DOI: <http://dx.doi.org/10.1088/1748-9326/8/3/034002>

Publisher: Institute of Physics

All outputs in CentAUR are protected by Intellectual Property Rights law, including copyright law. Copyright and IPR is retained by the creators or other copyright holders. Terms and conditions for use of this material are defined in the [End User Agreement](#).

[www.reading.ac.uk/centaur](http://www.reading.ac.uk/centaur)

**CentAUR**

Central Archive at the University of Reading

Reading's research outputs online

## Figure captions

**Fig. S1.** As Figure 2, with more lines from UEA, GISS and CICS/ESSIC data sets.

**Fig. S2.** Spatial structure of precipitation anomaly trend (using fixed  $P_1$ ) from (a) GPCP, (b) AMIP5, (c) CMIP historical and (d) RCP 4.5 data sets. The data periods are from 1988-2008 for GPCP and AMIP5 data sets, 1979-2005 for CMIP5 historical data and 2006-2055 for RCP 4.5 data set. Please note the non-linear colour bars.

**Fig. S3.** Similar to the left column of Figure 4, but for the wettest and driest months in each year at each grid point.

TABLE S1. Correlation coefficients between different data sets over period 1979-2008.  
 Statistically significant coefficients are in bold. Top triangle is for wet tropical land  
 and lower triangle is for dry tropical land.

	GPCP	GPCC	UEA	CICS/ESSIC	GISS	MEI	AMIP ensemble mean
AMIP ensemble mean	<b>0.30</b>	<b>0.37</b>	<b>0.34</b>	<b>0.36</b>	<b>0.30</b>	<b>-0.29</b>	
MEI	<b>-0.57</b>	<b>-0.63</b>	<b>-0.57</b>	<b>-0.49</b>	<b>-0.30</b>		-0.18
GISS	<b>0.22</b>	<b>0.26</b>	<b>0.23</b>	<b>0.27</b>		-0.03	0.17
CICS/ESSIC	<b>0.76</b>	<b>0.77</b>	0.75		0.04	-0.17	0.12
UEA	<b>0.82</b>	<b>0.85</b>		<b>0.73</b>	0.07	<b>-0.36</b>	0.17
GPCC	<b>0.93</b>		<b>0.90</b>	<b>0.74</b>	0.13	<b>-0.39</b>	<b>0.30</b>
GPCP		<b>0.93</b>	<b>0.84</b>	<b>0.78</b>	0.12	-0.16	<b>0.25</b>

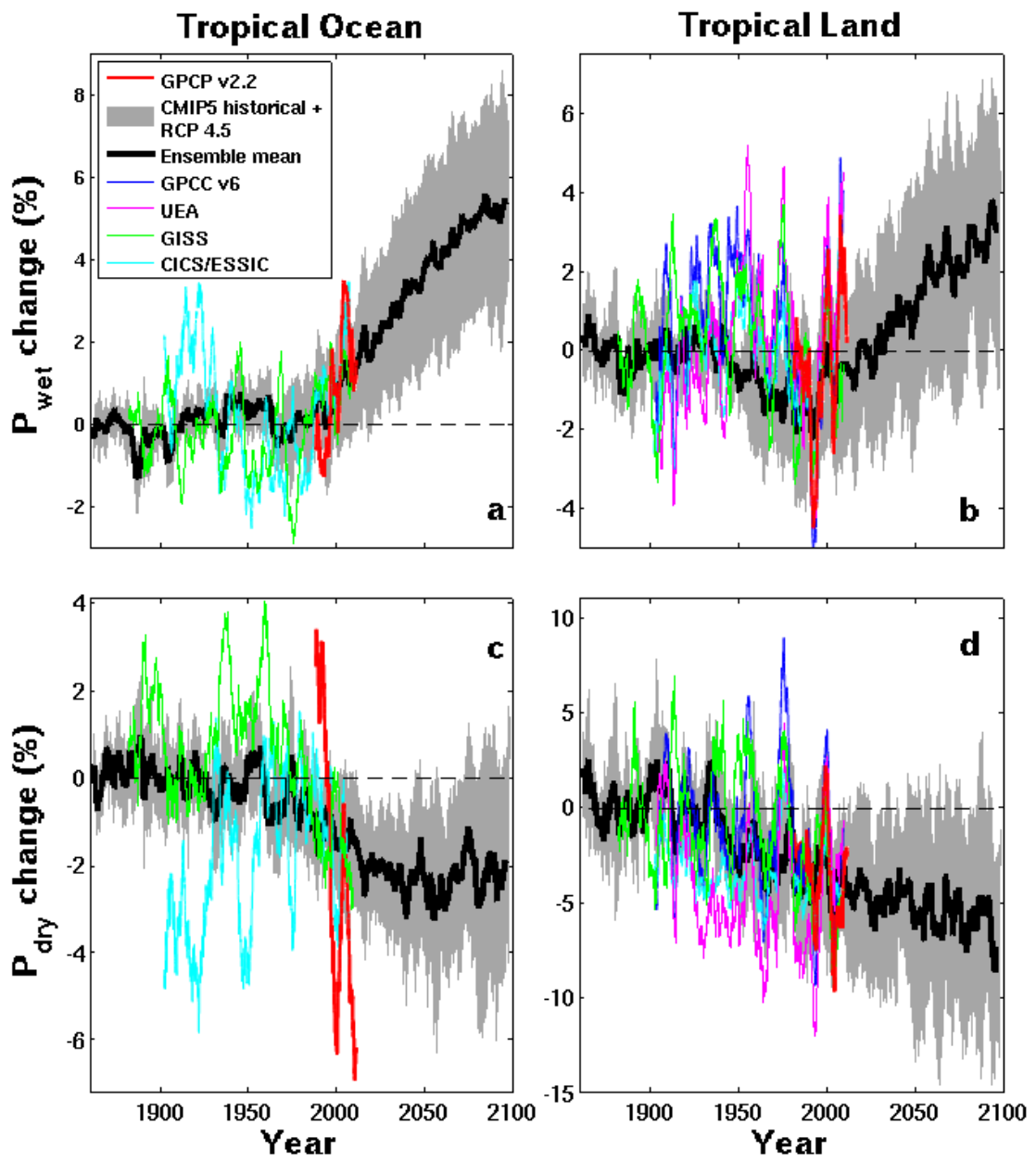


Fig. S1

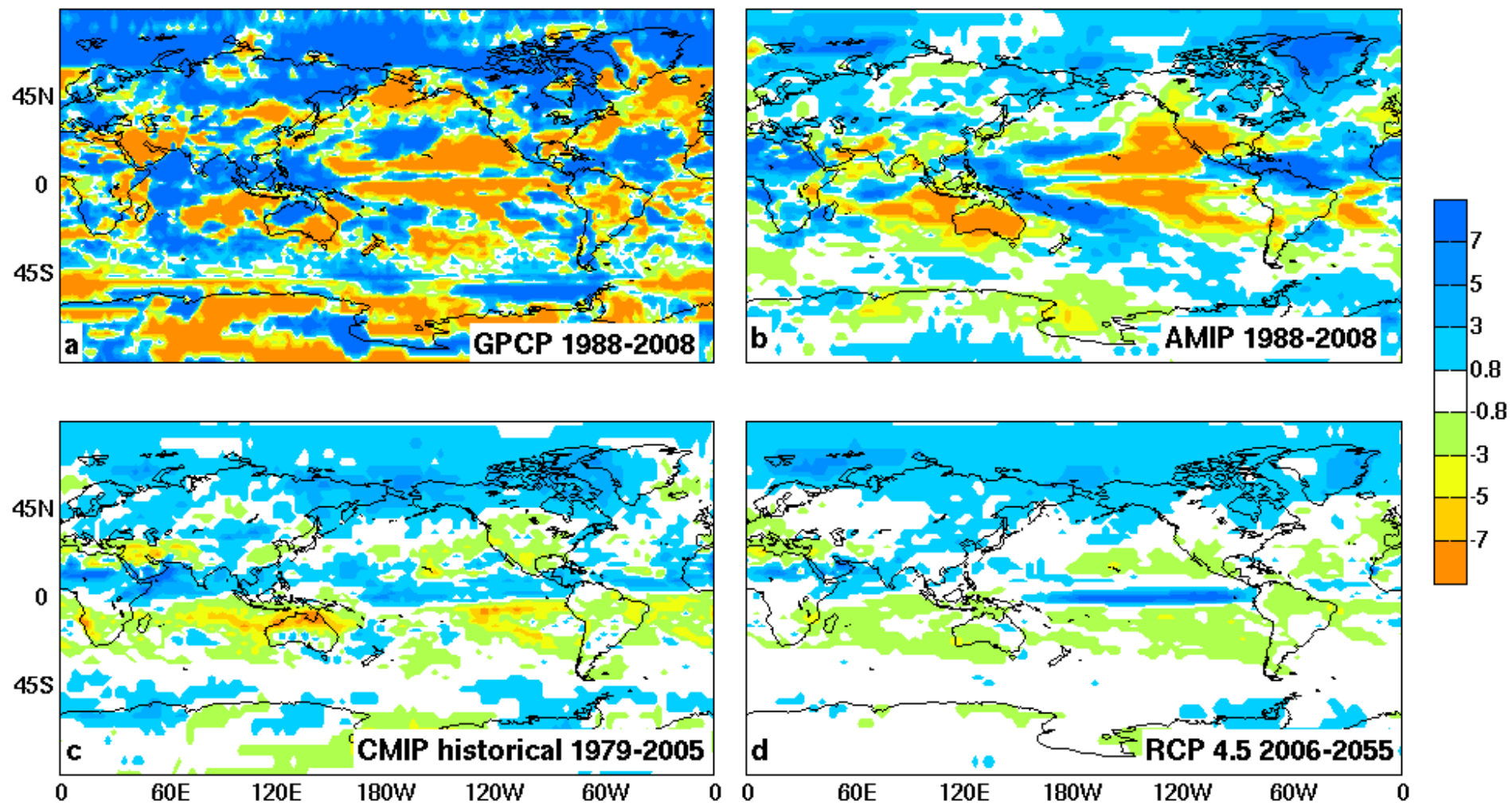


Fig. S2

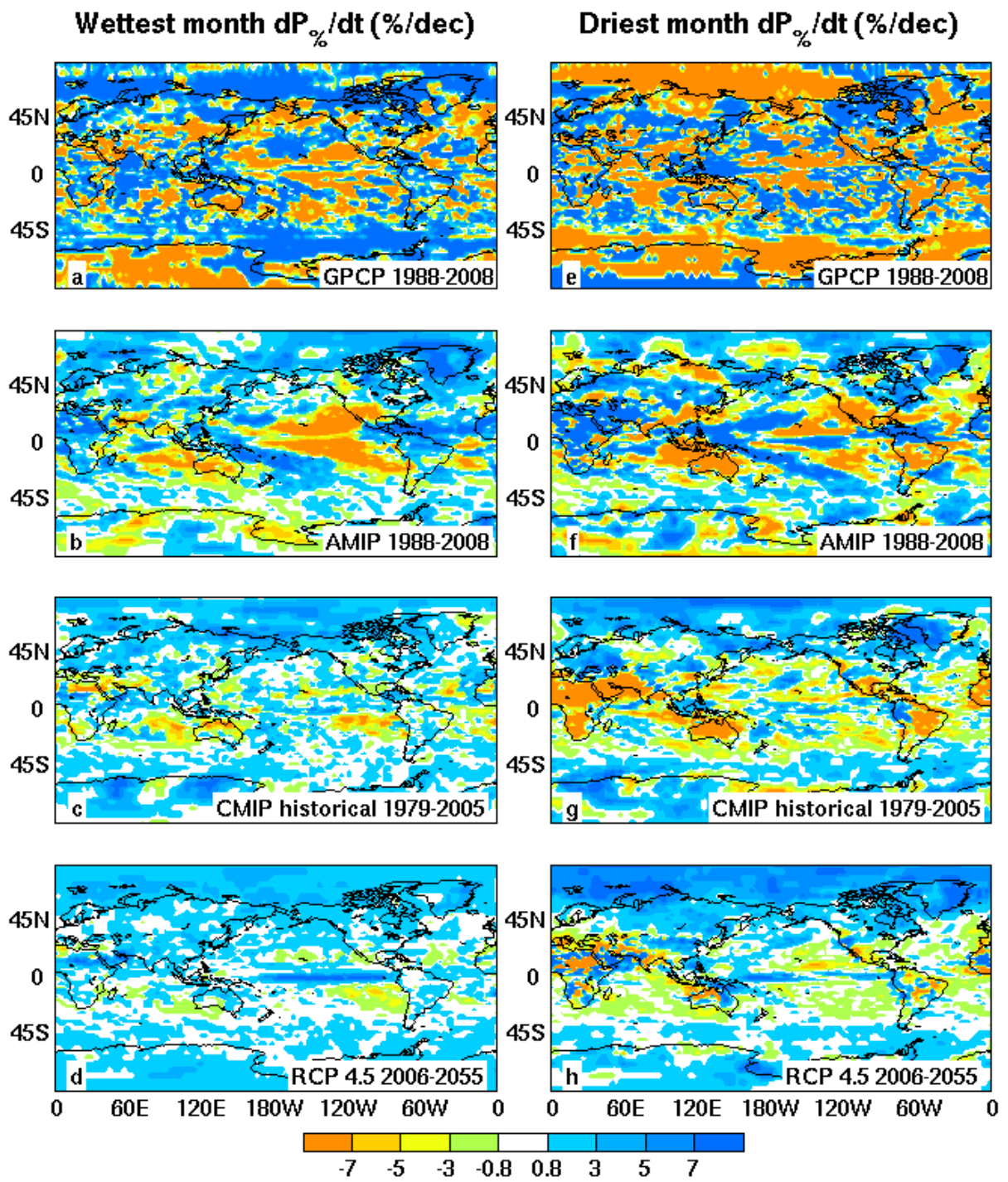


Fig. S3