

Is there a Rhythm Of The Rain? An analysis of weather in popular music

Article

Accepted Version

Brown, S., Aplin, K. L., Jenkins, K., Mander, S., Walsh, C. and Williams, P. D. ORCID: <https://orcid.org/0000-0002-9713-9820> (2015) Is there a Rhythm Of The Rain? An analysis of weather in popular music. *Weather*, 70 (7). pp. 198-204. ISSN 0043-1656 doi: <https://doi.org/10.1002/wea.2464> Available at <https://centaur.reading.ac.uk/40739/>

It is advisable to refer to the publisher's version if you intend to cite from the work. See [Guidance on citing](#).

Published version at: <http://onlinelibrary.wiley.com/doi/10.1002/wea.2464/abstract>

To link to this article DOI: <http://dx.doi.org/10.1002/wea.2464>

Publisher: Wiley

All outputs in CentAUR are protected by Intellectual Property Rights law, including copyright law. Copyright and IPR is retained by the creators or other copyright holders. Terms and conditions for use of this material are defined in the [End User Agreement](#).

www.reading.ac.uk/centaur

CentAUR

Central Archive at the University of Reading

Reading's research outputs online





Is there a rhythm of the rain? An analysis of weather in popular music

| | |
|-------------------------------|--|
| Journal: | <i>Weather</i> |
| Manuscript ID: | WEA-14-0066.R1 |
| Wiley - Manuscript type: | Research Article |
| Date Submitted by the Author: | n/a |
| Complete List of Authors: | <p>Brown, Sally; University of Southampton and Tyndall Centre for Climate Change Research, Faculty of Engineering and the Environment</p> <p>Aplin, Karen; University of Oxford, Department of Physics</p> <p>Jenkins, Katie; University of Oxford and Tyndall Centre for Climate Change Research, Environmental Change Institute, Oxford Centre for the Environment</p> <p>Mander, Sarah; University of Manchester, Tyndall Centre for Climate Change Research and Mechanical, Aerospace and Civil Engineering</p> <p>Walsh, Claire; University of Newcastle and Tyndall Centre for Climate Change Research, Centre for Earth Systems Engineering Research, School of Civil Engineering and Geosciences</p> <p>Williams, Paul; University of Reading, Department of Meteorology and National Centre for Atmospheric Science</p> |
| Keywords: | music, lyrics, song, keys, weather, sun, rain |
| | |

SCHOLARONE™
Manuscripts

Is there a rhythm of the rain?

An analysis of weather in popular music

Abstract

Weather is frequently used in music to frame events and emotions, yet quantitative analyses are rare. From a collated base set of 759 weather-related songs, 419 were analysed based on listings from a karaoke database. This article analyses the 20 weather types described, frequency of occurrence, genre, keys, mimicry, lyrics and songwriters. Vocals were the principal means of communicating weather: sunshine was the most common, followed by rain, with weather depictions linked to the emotions of the song. Bob Dylan, John Lennon and Paul McCartney wrote the most weather-related songs, partly following their experiences at the time of writing.

Key words

Music, songs, lyrics, keys, weather, sun, rain

Running head

Weather and popular music

1
2
3 Sally Brown

4 *Faculty of Engineering and the Environment and Tyndall Centre for Climate Change*
5 *Research, University of Southampton, University Road, Highfield, Southampton. SO17 1BJ.*
6
7
8
9 UK sb20@soton.ac.uk +44 2380 594796

10
11
12
13 Karen L. Aplin

14 *Department of Physics, University of Oxford, Denys Wilkinson Building, Keble Road, Oxford*
15 *OX1 3RH, UK karen.aplin@physics.ox.ac.uk +44 1865 273491*

16
17
18
19
20
21 Katie Jenkins

22 *Environmental Change Institute, Oxford Centre for the Environment, University of Oxford*
23 *and Tyndall Centre for Climate Change Research, South Parks Road, Oxford, OX1 3QY, UK*
24
25 *katie.jenkins@ouce.ox.ac.uk +44 1865 275261*

26
27
28
29
30
31 Sarah Mander

32 *Tyndall Centre for Climate Change Research and Mechanical, Aerospace and Civil*
33 *Engineering, The University of Manchester, Oxford Road, Manchester, M13 9QL, UK*
34
35 *s.mander@manchester.ac.uk +44 161 306 3259.*

36
37
38
39
40
41 Claire Walsh

42 *Centre for Earth Systems Engineering Research, School of Civil Engineering and*
43 *Geosciences, Newcastle University and Tyndall Centre for Climate Change Research,*
44 *Claremont Road, Newcastle upon Tyne, NE1 7RU, UK. Claire.Walsh@ncl.ac.uk +44 191*
45
46
47
48
49 *222 6447.*

50
51
52
53
54 Paul D. Williams

1
2
3
4
5
6
7
8
9
10
11
12
13
14
15
16
17
18
19
20
21
22
23
24
25
26
27
28
29
30
31
32
33
34
35
36
37
38
39
40
41
42
43
44
45
46
47
48
49
50
51
52
53
54
55
56
57
58
59
60

Department of Meteorology and National Centre for Atmospheric Science, University of Reading, Earley Gate, Reading RG6 6BB, UK. p.d.williams@reading.ac.uk +44 118 378 8424

For Peer Review

Introduction

The influence of the environment on composers, painters, writers, and other creative artists can be substantial. Several authors have analysed how our environment has influenced music: Wagner (1972) looked at weather in classical music, followed by Gedzelman (1980) and Schmid (1989), who also considered meteorology in popular music. Aplin and Williams (2011, 2012) recently analysed weather and classical music. Weather phenomena have also been examined with respect to certain artists and society (e.g., Robock, 2005; Kotarba *et al.*, 2013). Furthermore, it is straightforward to find evidence that popular singers are inspired by meteorology. For example, a video of the song "Sunshine On My Shoulders"¹ features singer John Denver discussing how he was inspired by nature. Also, members of the UK band Blur have explained how the Shipping Forecast (a British radio bulletin reporting on maritime weather conditions) provided inspiration for the lyrics of a half-written song, "This Is A Low" (Cavanagh and Maconie, 1995; James, 2007). Additionally, some versions of "Wind Power"² by electronic music pioneer Thomas Dolby, also feature visual and aural representations of meteorological phenomena including pressure charts, wind vanes and the shipping forecast.

These examples indicate that discussing weather - often seen as a British obsession - is a popular pastime and much can be learnt from how society portrays weather in music, and the types of weather that inspire musicians. For example, Smiley and Post (2014) use popular music, including songs with environmental themes, as a didactic tool. They found that many students improved their critical analysis skills, when geographical and environmental concepts were linked to music. Simply put, the majority of the population have heard or can relate to a piece of weather-related music. Thus the aim of this paper is to answer the following questions:

¹ http://www.youtube.com/watch?v=HrI_VXLUcFk

² <https://www.youtube.com/watch?v=SNyWRyMldiY>

- 1
- 2
- 3 i) How well is weather represented in popular music, and what phenomena are the
- 4 most commonly described?
- 5
- 6
- 7 ii) What are the common methods of communicating weather phenomena in popular
- 8 and music?
- 9
- 10
- 11 iii) Are musicians influenced by weather?
- 12
- 13
- 14

15 We focus on karaoke songs because of the wide range of artists covered, and that the songs
16 are well known for their lyrics, which is the principal method to communicate weather
17 phenomena. The karaoke database was used as a starting point for analysis, so the
18 complete versions of each song were considered, such as through artists websites, or
19 YouTube (our choice of database is discussed further in sections Methodology and Case
20 Studies). We apply the methodology of Aplin and Williams (2011) to compile and analyse a
21 database of weather references in popular music. Lyrics, musical genre, musical keys,
22 mimicry, geographical origin and links to specific weather events are all considered. In this
23 paper, references to songs are given to both songwriters and performers. The latter is
24 distinguished from the former by the words 'perf:' immediately preceding their name or group.
25
26
27
28
29
30
31
32
33
34
35
36
37
38
39

40 Methodology

41
42
43
44 Thousands of popular songs have been written, with many hundreds containing references
45 to weather. Using a series of lists, databases³ and our own inspiration, 759 weather songs
46 were found, all of which are listed in the supplementary material. To ensure a fair, consistent
47 methodology and accurate analysis, a subset of 419 popular music songs were analysed in
48 detail. These songs were available in a karaoke database. The most suitable was KaraFun⁴
49
50
51
52
53
54
55
56

57 ³ For example: karafun.com, songfacts.com, bobdylan.com, www.beatlesagain.com

58 ⁴ <http://www.karafun.com>

1
2
3 due to size⁵, consistency and availability of lyrics compared with alternatives. Other sources
4
5 were considered, such as Song Facts (2014), but these lists were not necessarily compiled
6
7 consistently and did not state, for example, if songs were excluded if weather was mentioned
8
9 in the title but not the lyrics. Although KaraFun proved to be one of the most effective
10
11 databases with which to search for songs, it did have weaknesses. First, songs less
12
13 appropriate for karaoke were not included (340 songs were excluded from detailed analysis
14
15 from our base list as they were not in the KaraFun database. Nearly half were related to Bob
16
17 Dylan. Subsequently this is addressed separately in the Case Studies section). Second, a
18
19 limited number of singers were associated with each song, which can affect some songs that
20
21 are repeatedly “covered” by different artists. We believe the database is representative of the
22
23 wider repertoire, as discussed in the section on Lennon and McCartney.
24
25

26
27 We searched for the following meteorological references in the lyrics of the KaraFun
28
29 database: Blizzard, cloud, cold (including freezing, cool), fair/blue skies, fog, frost, haze,
30
31 heat/warmth, hurricane, ice, mist, rain, rainbow, seasons (including each type), snow, storm,
32
33 Sun, thunder (and lightning), tornado and wind (or breeze). To ensure inclusion, selected
34
35 weather impact terms were also searched as in some songs. Additionally weather
36
37 phenomena are strongly implied without the use of meteorological terms. An example is the
38
39 phrase ‘*tree tops glisten*’ from *White Christmas* (Berlin) to indicate cold, frosty or snowy
40
41 conditions. In these cases reliability was ensured through iteration between the authors until
42
43 agreement was reached on the appropriate weather phenomenon. We record the weather
44
45 type represented, the song title, songwriter, singers/bands, year and year made famous from
46
47 the karaoke database, and where possible nationality of songwriters and copyright year.
48
49 Lyrics and musical characteristics of the song are also analysed. We found 419 songs (from
50
51 a possible 759 based on multiple sources), referring to weather were in the KaraFun
52
53 database. These are divided into two mutually exclusive categories: primary (190 songs),
54
55 where weather was a theme, repeated line or chorus, and secondary (229 songs), where
56
57

58 ⁵ 15,000 songs were available on KaraFun up to 31 December 2012
59
60

1
2
3 weather was mentioned only in a few lines. To avoid ambiguity, the classifications were
4 iterated between the authors, until all were satisfied with the classification. Primary songs will
5 be analysed, with some reference to the secondary songs and where appropriate, the 340
6 not in KaraFun (listed in the supplementary material). Throughout our study, we assumed,
7 following common perception in north-west Europe, that phenomena such as sun and warm
8 temperatures are positive aspects of the weather, whilst cold, rain, thunder and rain are
9 negative. Of course, there are exceptions to this (such as meteorologists enjoying thundery
10 conditions, or rain being good for crops particularly in times of drought), as described in
11 greater detail in the Lyrics section.
12
13
14
15
16
17
18
19
20
21
22

23 **Results**

24 **Overview**

25
26
27
28
29
30 Out of the 190 songs with weather as a primary theme, Sun and sunshine are the most
31 common references (86 instances), followed by rain (74 references). Sun and rain represent
32 37% of the references to weather for both primary and secondary songs, as shown in Figure
33 1a. The seasons and wind/breeze are the next two most popular references in both primary
34 and secondary songs. The frequency of weather references then varies between primary
35 and secondary songs. Blizzards and frost are the least frequently referenced, suggesting
36 that generic weather terms are more popular.
37
38
39
40
41
42
43
44
45

46
47 Many songs reference two or more weather types, as shown in Figure 1b. Secondary songs
48 are more likely to refer to only one or two weather types per song (53% and 30%,
49 respectively) compared to songs containing primary weather references (36% and 24%,
50 respectively). In contrast, songs with primary weather themes are more likely to refer to three
51 or more weather types. The maximum number of weather types per song was six, found in
52
53
54
55
56
57
58
59
60

1
2
3 “Baby It’s Cold Outside” (Loesser), “Stormy” (Cobb and Buie) and “The Wreck Of The
4
5 *Edmund Fitzgerald*” (Lightfoot).
6
7

8
9 [insert Figure 1 in here]
10

11
12 The most common combination of weather types referred to in the same song are Sun and
13 rain. Table 1 highlights that for primary songs, 41 entries in the database refer to both Sun
14 and rain together in the lyrics. Other common couplings include Sun and clouds; Sun and
15 seasons; rain and clouds; and rain and storms. This is followed by seasons and cold; Sun
16 and wind/breeze and Sun and storms. Of the songs that refer to both Sun and rain, the next
17 most common weather type to be additionally referenced is clouds, occurring in 12 of the
18 primary songs.
19
20
21
22
23
24
25
26

27
28
29 [insert Table 1 in here]
30
31

32
33 In the primary database, the number of songs containing two or more weather types is
34 similar to the number of songs containing one weather type. In contrast, the number of
35 songs in the KaraFun database containing any weather at all is tiny (just a few hundred out
36 of over 15,000). Therefore, the probability of a song containing at least two weather types,
37 given that it contains at least one weather type, is much greater than the probability of a
38 randomly chosen song containing any number of weather types. This means that mentions
39 of weather in pop songs tend to be clustered, which could indicate, for example, contrasting
40 emotions in a song represented by the weather (see Lyrics section).
41
42
43
44
45
46
47
48
49

50 51 **Lyrics**

52 We found that lyrics, as opposed to instrumentation or other sounds, are the main mode of
53 reference to weather-related phenomena in pop music, which made searching a karaoke
54 database advantageous. Some secondary songs in our database have little to do with the
55
56
57
58
59
60

1
2
3 weather, due to the dual meanings of meteorological words. For example “Ice Ice Baby”,
4
5 “Daddy Cool”, “Hot Stuff” and “Bennie and the Jets”, the latter for instance, being a fiction
6
7 band, rather than describing fast moving wind.
8
9

10
11 Out of the 500 greatest songs of all time, listed by Rolling Stone (2011), 7% are weather
12
13 related. Over all, The Beach Boys’ “Good Vibrations” is listed as the greatest weather-related
14
15 songs, where the ‘vibrations’ ‘harnessed that energy and turned it into eternal sunshine’
16
17 (Wilson, quoted in Rolling Stone, 2011). However, as a secondary song, this is not
18
19 commonly considered to be as a weather-related song. Twelve primary songs are found in
20
21 the Rolling Stone (2011) greatest songs list, including “Blowin’ In The Wind” (Dylan),
22
23 “Sunshine Of Your Love” (Clapton *et al.*), “Purple Rain” (Prince) and “Who’ll Stop The Rain”
24
25 (Fogerty). Lyrics referring to weather in the context of love and relationships formed around
26
27 one third of the total of primary songs. The variety of emotions associated with relationships
28
29 leads to a range of positive (e.g Sun, heat) and negative (e.g., rain, storm) weather
30
31 references. This is most directly shown in “When You’re Smiling (The Whole World Smiles
32
33 With You)” (Goodwin *et al.*) ‘*When you’re laughin’, when you’re laughin’, the sun comes*
34
35 *shinin’ through / But when you’re cryin’ you bring on the rain*’. There are some exceptions,
36
37 such as “The End Of The World” (Dee and Kent) where the Sun is perceived negatively,
38
39 ‘*Why does the sun go on shining?*’. Rainbows are often seen as positive, or appearing at
40
41 times of emotional change. Weather can be used to frame an entire story, such as “Seasons
42
43 in the Sun” (Brel) and “Bus Stop” (Gouldman). “Bus Stop” tells of two people brought
44
45 together in the rain under an umbrella. The return of the Sun is seen negatively because the
46
47 umbrella is no longer needed. Rain is also used to portray the entire emotional spectrum
48
49 from positive (e.g., “Rain Is A Good Thing” (Davidson and Bryan) ‘*Rain makes corn*’), to
50
51 change (e.g., “I Love A Rainy Night” (Malloy *et al.*) ‘*Showers wash all my cares away*’), or
52
53 simply happiness (e.g., “Singin’ In The Rain” (Brown and Freed)). Other lyrics are more
54
55 cryptic, such as “MacArthur Park” (Harris) which compares a cake left out in the rain and its
56
57 recipe with a broken romance.
58
59
60

1
2
3
4
5 Our analyses showed that seasonal songs are frequently written by, or aimed at, those living
6
7 in the Northern Hemisphere, where Christmas is in winter. The only exception found is
8
9 “Summer” (Songwriter not listed) which describes Christmas in an Australian summer.
10
11 Thirteen of the primary songs are about a winter Christmas, with only one having a religious
12
13 base. Perhaps surprisingly, in Christmas songs in our primary list the word ‘cold’ is used less
14
15 than imagined, but instead is implied through idealistic Christmas images of snow. Despite
16
17 bitter weather, Christmas songs are often cheery, and refer to heat (e.g., fireplace) almost as
18
19 often as snow. This may be because our happy or idealistic memories of Christmas involve
20
21 spending time indoors, for example, around a warm fire, rather than being outside.
22
23

24 25 **Music**

26
27
28
29 This section discusses musical aspects of the meteorological references in popular songs
30
31 through genre, keys, mimicry, and onomatopoeia.
32
33

34 35 **Genre**

36
37 We assign a musical genre to each primary song and related it to a weather type. Although
38
39 many songs fit into multiple categories, for simplicity only the principal genre is used.
40
41 Multiple weather types within a song are counted multiple times. Results are shown in Figure
42
43 2.
44
45

46
47 [insert Figure 2 in here]
48
49

50
51
52 Each music genre has between one (reggae) to 77 (rock) songs associated with it. Different
53
54 weather types are reasonably well spread across musical genres, indicating that the origin or
55
56 type of music does not particularly affect representation of meteorological phenomena. That
57
58 said, sunshine seems to be disproportionately well-represented in jazz songs, and rainbows
59
60

1
2
3 are more popular in the pre-1955 music and in soundtrack categories. Reasons for this are
4 unclear. In classical music however, Aplin and Williams (2011) identified a clear link between
5 the 'home climate' of a composer and the weather types they chose to depict. (It is tempting
6 to relate the popularity of heat in reggae music to its origins in the Caribbean, but the sample
7 size is too small to draw a conclusion). One possible explanation for this difference between
8 popular and classical music may be the time taken to write a popular song compared to a
9 classical work. Although there are exceptions, orchestral works tend to be longer and more
10 complex than popular music songs, and thus take months or even years to compose, thus
11 focusing more on climate than weather. There is evidence that some popular music
12 composers were inspired by a few very sunny days (e.g., "Good Day Sunshine" (Lennon and
13 McCartney), see Case Studies section). Hence an analogy can be drawn between at least
14 some popular songs being affected by weather, whereas classical works might be more
15 likely to reflect climate timescales. This suggestion is difficult to analyse quantitatively
16 without knowing how long meteorologically-inspired pop songs took to write (which is hard to
17 find), as some songwriters may take longer to write some songs and thus be inspired more
18 by climate than weather. Even so, some artists just write about weather from their local
19 climate, which was more common in secondary songs where weather was mentioned in
20 passing comment, rather than a central theme. Additionally, the classical music considered
21 by Aplin and Williams (2011) spanned the 18th century to the present day, whereas our
22 study relies on 20th century popular music, mainly post-1955. The availability of rapid
23 transport and electronic communication has made meteorological influences on pop writers
24 and singers far broader than just the view out of the window, contributing to the
25 representation of many different types of weather across many different genres of popular
26 song.

Musical keys

27
28
29
30
31
32
33
34
35
36
37
38
39
40
41
42
43
44
45
46
47
48
49
50
51
52
53
54
55
56 Aplin and Williams (2011) found that almost all the pieces in their classical music database
57 depicting frontal storms were in minor keys, and that all the pieces depicting fair weather
58
59
60

1
2
3 were in major keys. Generally speaking, songs in a minor key tend to sound cold and sad
4 (e.g., “Windmills Of Your Mind” (Bergman and Bergman)), while those in a major key tend to
5 sound warm and happy (e.g., “You Are The Sunshine Of My Life” (Wonder)). Popular music
6 songs were classified by keys. We distinguish only between the major and minor modes,
7 because pop songs are often transposed into different keys within the same mode, perhaps
8 to suit the vocal range of a particular singer. (For example, C major and F major are different
9 keys in the same mode). If the mode shifts during a song, such as from a major key for the
10 chorus into the relative minor key for the verses, the song was categorized as being in a
11 ‘mixed key’.

12
13
14
15
16
17
18
19
20
21
22
23 Out of the 190 primary weather songs, 168 (88%) are in a major key and 22 (12%) are in
24 minor or mixed keys. The minor and mixed keys are grouped together for this analysis,
25 because if a song is in a mixed key there is at least some aspect of sadness about it. It is
26 interesting to compare the major fraction from this study with the findings of Schellenberg
27 and von Scheve (2012), who examined the keys of over 1,000 popular songs from the
28 American top 40 charts over the last five decades. In the 1960s, 85% of the songs were in a
29 major key, compared with only about 40% now. Therefore, compared to songs in general,
30 weather-related songs appear to be more likely to be in a major key. Table 2 breaks down
31 six of the weather types by key.

32
33
34
35
36
37
38
39
40
41
42
43
44 [insert Table 2 in here]

45
46
47 Some interesting findings emerge. First, if a song does not mention the Sun, there is an
48 86% chance it is in a major key (89/104 songs). However, if a song does mention the Sun,
49 this increases to 92% (79/86 songs). This difference is significant at the 90% level according
50 to the exact binomial test. Therefore, consistent with naive expectations, mentioning the Sun
51 significantly increases the probability of being in a major key. Second, if a song is in a minor
52 (or mixed) key, there is a 32% chance it mentions the Sun (7/22 songs) but a 41% chance it

1
2
3 mentions the rain (9/22 songs). Therefore, songs in minor (or mixed) keys appear to be more
4 likely to mention rain than Sun, although the number of songs involved is too small to be
5 able to attach statistical significance to this result. Third, if a song mentions the Sun, there is
6 only an 8% chance it is in a minor (or mixed) key (7/86 songs). However, this increases to
7 11% (3/27 songs) if it mentions the cold; to 12% (9/74 songs) if it mentions the rain; to 17%
8 (2/12 songs) if it mentions thunder; and to 22% (2/9 songs) if it mentions ice. Therefore, what
9 is widely regarded as worse weather increases the probability of being in a minor/mixed key,
10 although again the number of songs involved is too small to claim statistical significance.
11 Finally, if a song in our database mentions a rainbow, there is a 100% chance it is in a major
12 key (12/12 songs), indicating that a rainbow is often associated with the brighter side of life
13 or a pleasant change.
14
15
16
17
18
19
20
21
22
23
24
25
26

27 As noted earlier, some mentions of the Sun in lyrics are negative or due to the absence of
28 the Sun, e.g., "When The Sun Goes Down" (Turner) and "Ain't No Sunshine" (Withers).
29 Therefore, the songs that appear in the Sun category of our analysis are not necessarily all
30 happy songs, they could be sad songs about how the Sun has disappeared. Therefore,
31 some mentions of the Sun are expected (and found) to be in minor keys. One example is
32 "Summer in the City" (Boone *et al.*) which features a minor descending scale in the bass line,
33 perhaps to create a slightly oppressive and uncomfortable feeling, which contrasts with the
34 major key sections. Another example (listed in the supplementary material) is the song
35 Rainbow (perf: Marmalade) whose lyrics include '*Rainbow, you were fun to have around*'
36 and '*Come on home, keep me warm*'. This song is in a minor key, which is consistent with it
37 being about the absence of a rainbow.
38
39
40
41
42
43
44
45
46
47
48
49
50
51

52 ***Mimicry and onomatopoeia***

53 The use of mimicry - the action of imitating a noise - was found to be established in classical
54 music, occurring in 10 out of 64 pieces (16%) (Aplin and Williams 2011). In popular music it
55 is less common, with only 12 out of 190 primary songs (6%) using the technique. For
56
57
58
59
60

1
2
3 example, the sound of plucked (pizzicato) string instruments to represent the sound and
4
5 rhythm of falling rain (a popular technique amongst classical composers), is used in three
6
7 pop songs: “Rain On Your Parade” (perf: Duffy), “It Might As Well Rain Until September”
8
9 (perf: Carole King), and “A Year Without Rain” (perf: Selena Gomez). “Rhythm Of The Rain”
10
11 (perf: The Cascades) incorporates mimicry of three weather types, by including a repetitive
12
13 descending glockenspiel, with other percussion instruments imitating thunder and rain at the
14
15 end of the song. This is one of the largest numbers of weather types to be copied in any one
16
17 song (see Figure 1b).
18

19
20
21 As might be expected from more contemporary music, 20th century technology is used to
22
23 include direct sound effects. For example, “Rain” (perf: SWV) includes a ‘drip’ sound in the
24
25 percussion throughout, and sounds of heavy rain at the end to reinforce the lyrics about rain.
26
27 “Riders on the Storm” (perf: The Doors) use thunder and rain sounds throughout. “Stormy
28
29 Weather” (perf: Lena Horne) uses both “thunderclap” sounds, and several of the techniques
30
31 employed in classical music (Aplin and Williams, 2011) to mimic thunder and rain. Different
32
33 covers have different interpretations: Tina Turner’s version of “I Can’t Stand The Rain”
34
35 (Peebles *et al.*) features rain and thunder noises throughout, whereas Seal’s performance
36
37 only has the sound effects at the start, opting for rhythmic repetitions of the word ‘rain’
38
39 towards the end, almost representing the sound itself. Wind is often copied using a variety of
40
41 techniques, several of which are included in the country music song “North Wind” (perf: Slim
42
43 Whitman). Portamento sounds, sliding from one note to another, are used in the guitar. The
44
45 song also features a wind machine, and the vocalist using chromatic phrase endings to echo
46
47 the sliding effects in the guitar. The voice can be used to directly copy the howling
48
49 or whooshing sounds of wind, particularly with portamenti (e.g., “Wild Is The Wind” (perf:
50
51 David Bowie)) or in non-verbal choruses using an ‘ooh’ or ‘aah’ sound (“Windy” (perf: The
52
53 Association)). This song also builds up a chord from the bottom using the voices of the
54
55 singers to rise ‘*above the clouds*’ in the lyrics.
56
57
58
59
60

1
2
3 Some meteorological sound effects do not use direct mimicry, but are still effective at
4 summoning a particular mood. For example, the use of bells is associated with winter and
5 Christmas by many people, as noted in “White Christmas”, and “I Wish It Could Be
6 Christmas Every Day”. The opposite effect is achieved in “Here Comes The Sun” (perf: The
7 Beatles) by the use of a Hawaiian guitar, which can be mentally linked to the warmer
8 Hawaiian climate (relative to a British summer). “Mr Blue Sky” (perf: Electric Light Orchestra)
9 uses a snippet of an optimistic weather forecast to set up the happy mood of the song.
10
11
12
13
14
15
16
17
18

19 As well as simple mimicry with non-verbal sounds, lyrics of pop songs can include
20 onomatopoeia, in which the sound of a word mimics what the word describes. Interestingly,
21 words describing weather can be pronounced in an unexpected way, for example thunder or
22 wind may be quite soft (e.g., “Storms Never Last”, “Wild Is The Wind”). Wind is probably the
23 most recognisable form of onomatopoeia, as the word ‘wind’ can stretch and slide, as in the
24 portamento in “North Wind”. In “The Thunder Rolls”, the singer uses a range of
25 ornamentation techniques, such as mordents and trills, on the word ‘rolls’ to give a ‘rumbling’
26 effect. Although not strictly onomatopoeic, the song “Oh What A Beautiful Mornin’” uses a
27 rising chromatic scale to represent ‘*climbing clear up to the sky*’.
28
29
30
31
32
33
34
35
36
37
38
39

40 **Connectivity, and inspiration from weather events**

41
42
43

44 Weather inspired songs are reflected in our primary songs either through a central weather-
45 related storyline (e.g., “Who’ll Stop The Rain” (Fogerty)), or as an analogy, metaphor or
46 metonymy (e.g., “Get Off Of My Cloud” (Richards)). A distinct example is from Canadian
47 Gordon Lightfoot, who in 1976, wrote and composed the song “The Wreak Of The *Edmund*
48 *Fitzgerald*” in tribute to the eponymous freight ship that sank with the loss of 29 crew the
49 previous year. However, finding evidence in other songwriters who were directly influenced
50 by a weather event, rather than writing more generally about the weather is challenging. For
51
52
53
54
55
56
57
58
59
60

1
2
3 songs with a central weather-related storyline, inspiration could come from a particularly
4 sunny day or a series of events (weather related or otherwise). To determine this, the
5 copyright years of songs (where available; only 91 out of 190 were found for primary songs)
6 are compared against actual weather events. Of the 33 songs in the subset from the 1950s
7 and 1960s, 73% (24 songs) mention storms, wind, rain, or hurricanes. In contrast, of the 26
8 songs in the subset from the 1970s and 1980s, when there were fewer hurricanes, only 46%
9 (12 songs) mention these keywords. In the USA during the 1950s and 1960s, there was
10 much severe weather, including hurricanes Betsy, Hazel, Carol, Donna, and Carla
11 (Changnon and Changnon, 1992). Under the null hypothesis that 1950s and 1960s songs
12 have the same probability of mentioning these keywords as 1970s and 1980s songs, the
13 number of 1950s and 1960s songs to mention these keywords is distributed according to the
14 binomial distribution $B(N,p)$ with $N=33$ and $p=0.46$. According to this distribution, the
15 probability of obtaining at least 24 songs is only 0.2%. Therefore, we can reject the null
16 hypothesis at the 99.8% level. We conclude that references to bad weather in pop songs
17 were significantly more likely in the stormy 1950s and 1960s than in the relatively quiet
18 1970s and 1980s when considering conditions in the USA. Conversely, in the UK, the
19 'neverending summer' (above average sunshine and temperatures) of 1959 was
20 subsequently followed by poor summers (cool conditions, and at times wet) in the 1960s and
21 early 1970s (Meteorological Office, 1959; 1962; 1971). Despite this, 54% of 1960s songs
22 mentioning the Sun were by British songwriters, e.g., "I'll Follow The Sun" (Lennon and
23 McCartney).

24
25
26
27
28
29
30
31
32
33
34
35
36
37
38
39
40
41
42
43
44
45
46
47
48 Meteorological lyrics occasionally also mention specific days of the week, particularly
49 Sunday, e.g., the American-written "Sunday Morning" (Carmichael *et al.*) '*Sunday morning*
50 *rain is falling*', and "Raining On Sunday" (Brown and Foster) '*When it's raining on Sunday*'.
51
52
53
54 Whilst this may represent feelings associated with a traditionally quieter or less interesting
55 day of the week, the references to weekend rainfall may not be entirely fanciful, as weekly
56 cycles of air pollutants have been claimed to be linked to more precipitation in the north-

1
2
3 west Atlantic region of the USA at weekends (Cerveny and Balling, 1998). Weekly cycles
4
5 have also been identified in German weather patterns due to interactions between aerosols
6
7 and atmospheric dynamics (Bäumer and Vogel, 2007). No unambiguous conclusions can
8
9 be drawn linking specific or cyclonic weather events to meteorological references in pop
10
11 songs.
12

13 14 15 **Case studies** 16

17
18
19 Our study found over 900 different songwriters and singers portraying weather in 418 songs.
20
21 Concentrating on lyricists, Lennon and McCartney have the most number of songs in our
22
23 primary database (e.g., "I'll Follow The Sun", "Rain", and "Good Day Sunshine"), whereas
24
25 overall (including songs not found in KaraFun, as listed in the supplementary material), the
26
27 most weather-related songs are by Bob Dylan. (e.g., "Blowin' In The Wind", "Just Like A
28
29 Woman"). We note that Lennon and McCartney would of course stand out in the database,
30
31 not only because they were prolific songwriters but also because many of their songs are
32
33 ideal for inclusion in a karaoke songlist. Other musicians have many weather songs in one
34
35 album, such as XTC's "Skylarking".
36
37
38
39

40 41 **Bob Dylan** 42

43
44 Bob Dylan's songs are well known to mention weather phenomena (Robock, 2005). Out of
45
46 542 songs sung, and mainly written by him, 163 were found to contain weather references
47
48 (see supplementary material), in particular to wind and Sun. Six of his weather-related songs
49
50 are in Rolling Stone's (2011) greatest songs of all time – the most out of any artist. As with
51
52 other artists, Dylan's songs often clustered different weather types. This paper has not
53
54 attempted a detailed study of Dylan since these already exist (Robock, 2005; Epstein, 2011).
55
56
57
58
59
60

1
2
3 Although Dylan produced his 33rd album under the meteorological pseudonym Jack Frost
4 (Epstein, 2011), there is little direct evidence of him being specifically influenced by the
5 weather. Instead, atmospheric phenomena, as experienced by everyone, are simply used as
6 a powerful allegorical tool. However, one instance of Dylan being directly affected by a
7 meteorological event is that he resurrected and edited the 1920s blues song “When the
8 Levee Breaks” in 2005 after the flooding in New Orleans. Interestingly, Dylan also presented
9 a weather-themed radio programme (Theme Time Radio Hour) on 3rd May 2006 (Epstein,
10 2011), on which meteorologically influenced songs were played. Although the programme
11 had a different theme every time, the choice of weather over other possible themes is again
12 circumstantial evidence for the weather acting as a rich creative inspiration. As Dylan himself
13 said on the show, ‘Curious about what the weather looks like? Just look out your window and
14 take a walk outside’ (Epstein, 2011). It is possible that Dylan’s upbringing in the severe
15 continental climate experienced by the state of Minnesota could have instilled a deep
16 appreciation for the weather within him.
17
18
19
20
21
22
23
24
25
26
27
28
29
30
31
32

33 **John Lennon and Paul McCartney**

34
35 “Rain” was provoked by a trip to Melbourne, Australia, about which Lennon stated, ‘I’ve
36 never seen rain as hard as that, except in Tahiti’ (McCartney *et al.*, 2000). Lennon later
37 explained that the song was about ‘people moaning about the weather all of the time’
38 although some analyses believe the lyrics also reflected Lennon’s state of mind at the time
39 (Turner, 1999). The lyrics are strongly metaphorical, suggesting that people hiding from the
40 rain ‘may as well be dead’, whilst the Sun is used to imply a more positive outlook. Part of
41 the song involves the (then) new technique of playing a taped guitar sound backwards, to
42 represent rain (McCartney *et al.*, 2000).
43
44
45
46
47
48
49
50
51
52

53 Similarly, in “Good Day Sunshine”, written by McCartney whilst in a good mood during a
54 ‘particularly sunny day’ (Turner, 1999), the love story told is heightened by the weather.
55 George Harrison wrote “Here Comes The Sun” after he left a business meeting early and
56
57
58
59
60

1
2
3 disgruntled in April 1969. Rowley (2013) documents that April 1969 had 189 hours of
4
5 sunshine (recorded by the nearby Greenwich meteorological station), a record that was not
6
7 surpassed until 1984. The day the song was written was the 'first sunshine of the year'
8
9 (Turner, 1999), which was perhaps appropriate or sign of relief the sunshine had finally
10
11 showed its warmth after colder than average conditions seen in March of that year. George
12
13 Harrison stated, 'It was such a great release for me simply being out in the sun...The song
14
15 just came to me'. Furthermore, Harrison in his autobiography describing this song states 'it
16
17 seems as if winter in England goes on forever, by the time spring comes you really deserve
18
19 it' (Harrison, 1980). This may also be reflected in the lyrics of the song, where Harrison
20
21 referred to the '*long, cold lonely winter*' in the lyrics.
22
23

24
25 We will address the issue of how representative the KaraFun database is of the wider
26
27 repertoire of songs. For example, for the Beatles, 48 (16%) of their total output of 308 songs
28
29 mention a weather type⁶, whereas 27 (17%) of their 157 songs in the KaraFun database
30
31 mention a weather type. Under the null hypothesis that the KaraFun database is
32
33 representative, the number of Beatles' weather songs in Karafun is distributed according to
34
35 the binomial distribution $B(N, p)$ with $N=157$ and $p=0.16$. According to this distribution, the
36
37 probability of obtaining at least 27 weather songs by chance is 32%. Therefore, since there
38
39 is no convincing evidence to reject the null hypothesis we conclude that from the perspective
40
41 of weather references in the Beatles' songs, the KaraFun database is representative. There
42
43 is less evidence of representivity for Bob Dylan's songs, possibly because the number of his
44
45 songs in the KaraFun database is relatively low.
46
47
48
49

50 **Songwriters and artists**

51
52
53
54
55
56
57

58 ⁶ As searched for on www.beatlesagain.com
59
60

1
2
3 Performing artists and bands have a wide variety of names, and these too include some with
4 weather-related themes, such as Coldplay, Vanilla Ice, Wet Wet Wet, KC and the Sunshine
5 Band, The Weather Girls and The Storm. Our database contained a total of 30 artists,
6 lyricists, or band names relating to ten weather types. In common with the depictions in
7 songs, Sun is the most popular weather type, appearing in seven band names, followed by
8 cold (four) and heat (three).
9
10
11
12
13
14
15
16

17 **Conclusions**

18
19
20
21 Artistic inspiration is drawn from the weather, yet in music quantitative analysis has hitherto
22 been limited. We found 759 weather-related songs and detailed analysis was undertaken of
23 419 by searching an online karaoke database. Of that, 45% featured weather as a primary
24 theme, such as repeated words found in a chorus.
25
26
27
28
29
30
31

32 References to weather are often described and clustered in the lyrics, with Sun and rain
33 being the most common. Unsurprisingly, the Sun portrayed positive feelings and is more
34 likely to be in a major key, whereas rain could frame either good or bad emotions, so has a
35 higher likelihood than Sun of being in a minor or mixed key. The key effect was stronger in
36 popular songs than in classical orchestral music (Aplin and Williams, 2011). There is some
37 evidence linking weather depicted in pop songs to contemporaneous weather conditions,
38 such as poor weather being more common in the stormy 1950s and 1960s than the calmer
39 1970s and 1980s. No significant relationship is found between musical genre and weather
40 type. Only a few songwriters repeatedly target the weather as a specific theme for their
41 songs, the most prolific artists being Bob Dylan and John Lennon and Paul McCartney. Over
42 30 artists, lyricists, or bands had names relating to the weather.
43
44
45
46
47
48
49
50
51
52
53
54
55
56
57
58
59
60

1
2
3 Taken together, these suggest that there is a universal and strong effect of weather and
4 climate in popular musical culture. Further research could include a deeper analysis of
5 weather-related songs by genre, by particular songwriters, by learning more about what
6 inspires songwriters to write weather related music. It might also be possible to expand the
7 study to consider songs written in other languages. Further analysis is also required of an
8 additional 340 songs (nearly half by Bob Dylan) which were not in the karaoke database
9 used, but which are noted in the supplementary material. We welcome suggestions for
10 weather-related songs not already featured in our lists.
11
12
13
14
15
16
17
18
19

20 21 **Acknowledgements**

22
23
24
25 We thank Alice Bows-Larkin, Shaun Brown, Alistair Ford, and Carly McLachlan from the
26 Tyndall Centre for Climate Research for their contributions to our database, which was
27 inspired by an event at Cardiff University organised by the Centre.
28
29
30
31
32

33 34 **References**

35
36
37
38 **Aplin K, Williams PD.** 2011. Meteorological phenomena in Western classical orchestral
39 music. *Weather*, **66**(11):300-306. doi:10.1002/wea.765
40
41
42

43
44 **Aplin KL, Williams PD.** 2012. Whether weather affects music, *Eos. Trans. American*
45 *Geophys. Union*, **93**(36):347. doi:10.1029/2012EO360007
46
47
48

49
50 **Bäumer D, Vogel B.** 2007: An unexpected pattern of distinct weekly periodicities in
51 climatological variables in Germany. *Geophys. Res. Lett.*, **34**:L03819,
52 doi:10.1029/2006GL028559
53
54
55
56
57
58
59
60

1
2
3 **Cavanagh D, Maconie S.** 1995. How did they do that?, *Select*, **July**.
4
5

6
7 **Cervený RS, Balling Jr, JC.** 1998. Weekly cycles of air pollutants, precipitation and tropical
8
9 cyclones in the coastal NW Atlantic region. *Nature*, **394**:561-563
10

11
12
13 **Changnon SA, Changnon JM.** 1992. Temporal fluctuations in weather disasters: 1950-
14
15 1989. *Clim Change* **22**:191-208.
16

17
18
19 **Epstein DM.** 2011. *The Ballad of Bob Dylan: A Portrait*. Harper: London.
20
21

22
23 **Gedzelman DS,** 1980. *Science and Wonders of the Atmosphere*. John Wiley and Sons
24
25

26
27 **James A.** 2007 *Bit of a Blur*. Abacus: London.
28
29

30
31 **Harrison G.** 1980. *I, Me, Mine*. Genesis Publications Limited: London.
32
33

34
35 **Kotarba JA, Merrill B, Williams JP, Vannini P.** 2013 *Understanding society through*
36
37 *popular music*, 2nd edition, Routledge: New York.
38
39

40
41 **McCartney P, Harrison G, Starr R, Ono Y.** 2000. *The Beatles Anthology*. Cassell: London.
42
43

44
45 **Meteorological Office 1959** Monthly weather report of the Meteorological Office. **76(8)**
46

47 August 1959. Her Majesty's Stationery Office.
48

49 <http://www.metoffice.gov.uk/media/pdf/f/r/Aug1959.pdf> Accessed October 2014
50
51

52
53 **Meteorological Office 1962** Monthly weather report of the Meteorological Office. **79(8)**
54

55 August 1962. Her Majesty's Stationery Office.
56

57 <http://www.metoffice.gov.uk/media/pdf/1/b/Aug1962.pdf> Accessed October 2014
58
59
60

1
2
3
4
5 **Meteorological Office 1971** Monthly weather report of the Meteorological Office. **88**(8)
6
7 August 1971. Her Majesty's Stationery Office.

8
9 <http://www.metoffice.gov.uk/media/pdf/m/q/Aug1971.pdf> Accessed October 2014
10

11
12
13 **Robock A.** 2005. "Tonight as I stand inside the rain": Bob Dylan and weather imagery, *Bull.*
14
15 *Amer. Meteor. Soc.*, **86**(4): 483–487. doi: 10.1175/BAMS- 86-4-483.
16

17
18
19 **Rolling Stone** 2011. 500 greatest songs of all time.

20
21 <http://www.rollingstone.com/music/lists/the-500-greatest-songs-of-all-time-20110407>

22
23 Accessed May 2014
24

25
26
27 **Rowley D.** 2013. *All Together Now, the ABC of the Beatles songs and albums*. Troubador
28
29 Publishing Ltd: Leicester.
30

31
32
33 **Schellenberg EG, von Scheve C.** 2012. Emotional cues in American popular music: Five
34
35 decades of the Top 40. *Psychol. Aesthet., Creativity, and the Arts*, **6**(3):196-203.
36

37
38
39 **Schmid R.** 1989. Rockin'Thunder. *Weatherwise*, **42**(4):192-196.
40

41
42
43 **Smiley SL, Post C.** 2014. Using popular music to teach the geography of the United States
44
45 and Canada. *J. Geog.* DOI:10.1080/00221341.2013.877061
46

47
48
49 **Songfacts** 2014. Songs with weather conditions in the title.

50
51 http://www.songfacts.com/category-songs_with_weather_conditions_in_the_title.php

52
53 Accessed May 2014
54
55
56
57
58
59
60

1
2
3 **Turner, S.** 1999. *A Hard Day's Write*. Index Books Ltd.: Dubai.
4
5

6
7 **Wagner AJ.** 1972. Music to Watch Weather By. *Weatherwise*, **25**(4):168-173.
8
9
10
11
12
13
14
15
16
17
18
19
20
21
22
23
24
25
26
27
28
29
30
31
32
33
34
35
36
37
38
39
40
41
42
43
44
45
46
47
48
49
50
51
52
53
54
55
56
57
58
59
60

For Peer Review

1
2
3 *Figure 1 (a): Most popular weather types referred to the karaoke song database. In the labels 'Fair'*
4 *refers to fair weather or blue sky, and 'Thunder' includes lightning. (b) Number of songs with*
5 *multiple weather references. In the legend, 'primary' songs use weather as a theme, repeated line or*
6 *chorus, and 'secondary' references mention weather only in passing. The number of secondary songs*
7 *(light grey) is stacked on top of the primary songs (dark grey), so that each bar represents the sum of*
8 *the two groups.*
9

10
11
12 *Figure 2: Weather types represented in each major popular music genre. Some similar types of*
13 *weather have been combined to increase the sample size (e.g., hurricanes and tornadoes; fog, mist*
14 *and haze). 'Thunder' also includes lightning. The bars are in the same order as the legend from the*
15 *bottom upwards.*
16

17
18
19
20
21
22
23
24
25
26
27
28
29
30
31
32
33
34
35
36
37
38
39
40
41
42
43
44
45
46
47
48
49
50
51
52
53
54
55
56
57
58
59
60

For Peer Review

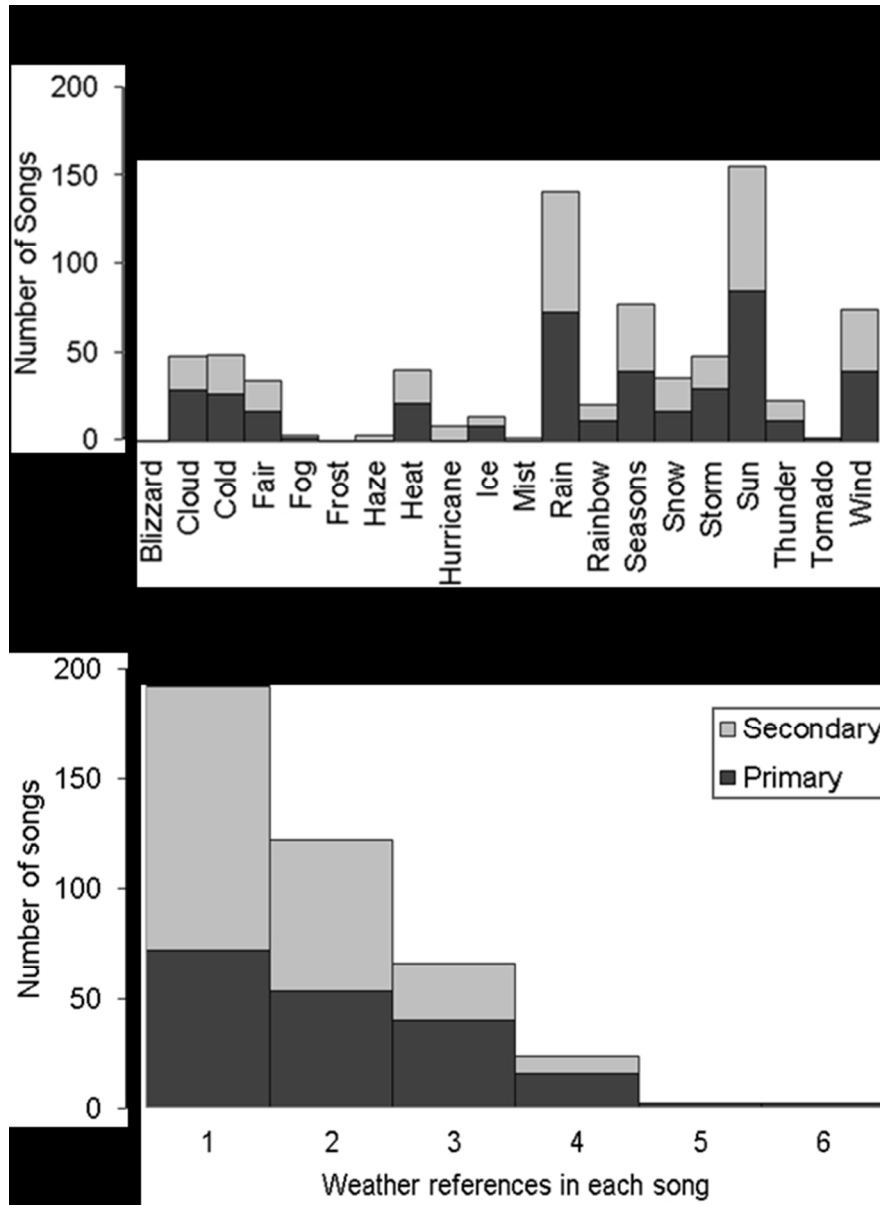


Figure 1 (a): Most popular weather types referred to the karaoke song database. In the labels 'Fair' refers to fair weather or blue sky, and 'Thunder' includes lightning. (b) Number of songs with multiple weather references. In the legend, 'primary' songs use weather as a theme, repeated line or chorus, and 'secondary' references mention weather only in passing. The number of secondary songs (light grey) is stacked on top of the primary songs (dark grey), so that each bar represents the sum of the two groups.

112x153mm (150 x 150 DPI)

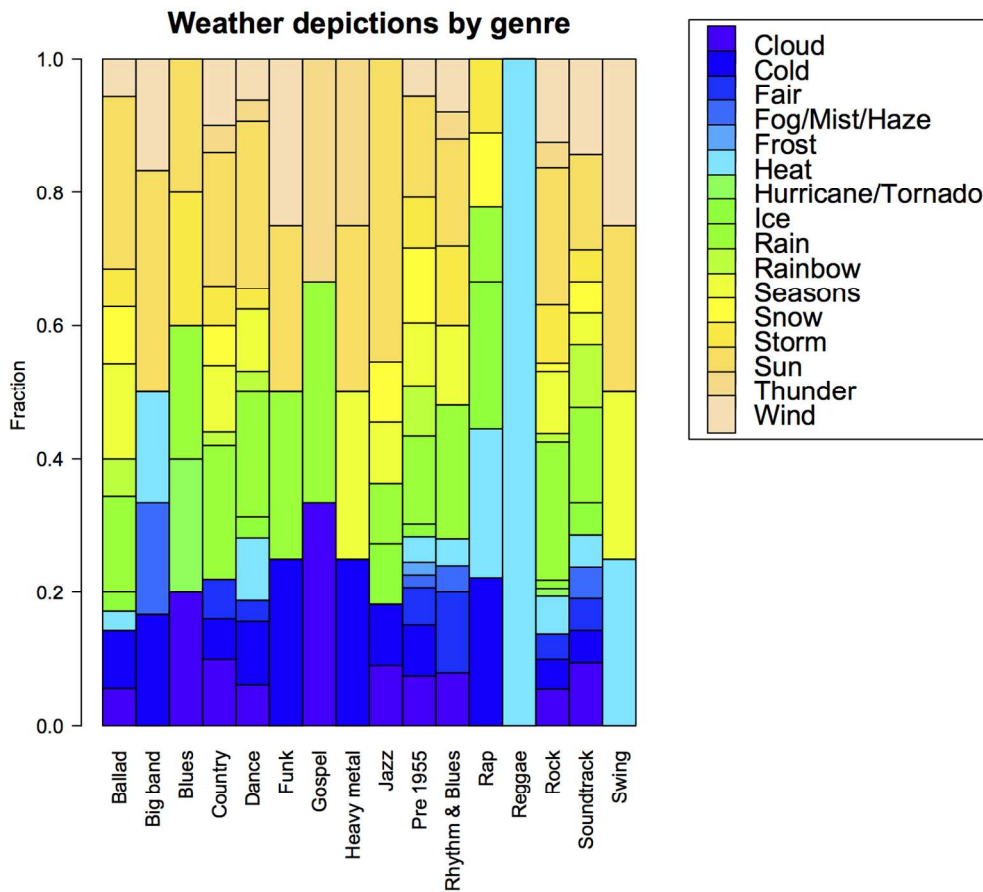


Figure 2: Weather types represented in each major popular music genre. Some similar types of weather have been combined to increase the sample size (e.g., hurricanes and tornadoes; fog, mist and haze). 'Thunder' also includes lightning. The bars are in the same order as the legend from the bottom upwards
 189x172mm (200 x 200 DPI)



Table 1: Most common weather types which appear together in primary songs.

| | Blizzard | Cloud | Cold | Fair | Fog | Frost | Haze | Heat | Hurricane | Ice | Mist | Rain | Rainbow | Seasons | Snow | Storm | Sun | Thunder | Tornado | Wind |
|-----------|----------|-------|------|------|-----|-------|------|------|-----------|-----|------|------|---------|---------|------|-------|-----|---------|---------|------|
| Blizzard | X | | | | | | | 1 | | 1 | | | | | 1 | 1 | | | | |
| Cloud | | X | | | | | | 1 | | | | 15 | 5 | 4 | 2 | 6 | 19 | 1 | 1 | 7 |
| Cold | | | X | | | | | 5 | | 6 | | 5 | | 13 | 9 | 3 | 1 | 1 | | 4 |
| Fair | | | | X | | | | | | | | 5 | 3 | 3 | | 4 | 9 | 2 | | 3 |
| Fog | | | | | X | | | | | | | | | | | | 2 | | | |
| Frost | | | | | | X | | | | | | | | | 1 | | | | | |
| Haze | | | | | | | X | | | | | | | | | | | | | 1 |
| Heat | | | | | | | | X | | 3 | 5 | 4 | 2 | 5 | 6 | | | | | 1 |
| Hurricane | | | | | | | | | X | | | 1 | | | | 1 | | | | |
| Ice | | | | | | | | | | X | | 1 | 2 | 4 | 1 | 2 | 1 | | | |
| Mist | | | | | | | | | | | X | | | | | | | | | |
| Rain | | | | | | | | | | | | X | 5 | 8 | 1 | 15 | 41 | 8 | 2 | 1 |
| Rainbow | | | | | | | | | | | | | X | | | 1 | 7 | | | 3 |
| Seasons | | | | | | | | | | | | | | X | 9 | 3 | 18 | 2 | | 1 |
| Snow | | | | | | | | | | | | | | | X | 4 | 3 | | | 3 |
| Storm | | | | | | | | | | | | | | | | X | 11 | 4 | 1 | 9 |
| Sun | | | | | | | | | | | | | | | | | X | 4 | 2 | 12 |
| Thunder | | | | | | | | | | | | | | | | | | X | | 2 |
| Tornado | | | | | | | | | | | | | | | | | | | X | 1 |
| Wind | | | | | | | | | | | | | | | | | | | | X |

For Peer Review

1
2
3
4
5
6
7
8
9
10
11
12
13
14
15
16
17
18
19
20
21
22
23
24
25
26
27
28
29
30
31
32
33
34
35
36
37
38
39
40
41
42
43
44
45
46
47
48
49
50
51
52
53
54
55
56
57
58
59
60

Table 2: The distribution of musical keys for the 190 primary weather songs for six weather types.

| | # major out of 168 | #minor/mixed out of 22 | total |
|-----------------|--------------------|------------------------|-------|
| SUN Present | 79 | 7 | 86 |
| SUN Absent | 89 | 15 | 104 |
| RAIN Present | 65 | 9 | 74 |
| RAIN Absent | 103 | 13 | 116 |
| COLD Present | 24 | 3 | 27 |
| COLD Absent | 144 | 19 | 163 |
| THUNDER Present | 10 | 2 | 12 |
| THUNDER Absent | 158 | 20 | 178 |
| ICE Present | 7 | 2 | 9 |
| ICE Absent | 161 | 20 | 181 |
| RAINBOW Present | 12 | 0 | 12 |
| RAINBOW Absent | 156 | 22 | 178 |

For Peer Review