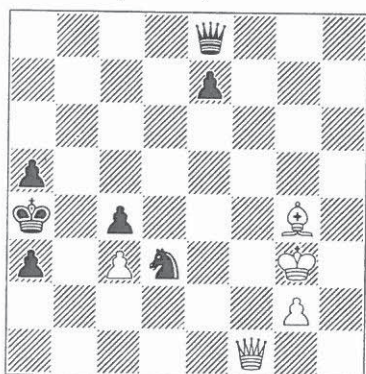


## diagrammes 2002-2003

The 33 studies were judged by IGM Jonathan Mestel, whose provisional award appeared in *diagrammes* no.153 iv-vi2005.

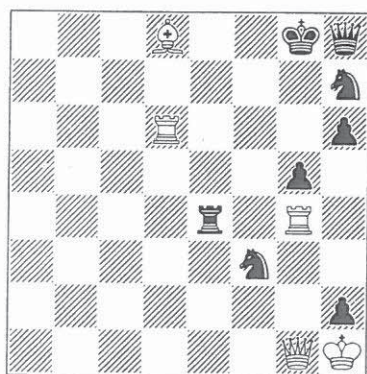
**No 16007 C.Bent**  
special prize



g3a4 4013.24 5/7 Draw

**No 16007 Charles Michael Bent** (Great Britain). 1.Bd1+ Kb5 2.Ba4+ Kxa4 3.Qd1+ Kb5 4.Qh5+ Qxh5 stalemate.

**No 16008 A.van Tets**  
1st honourable mention



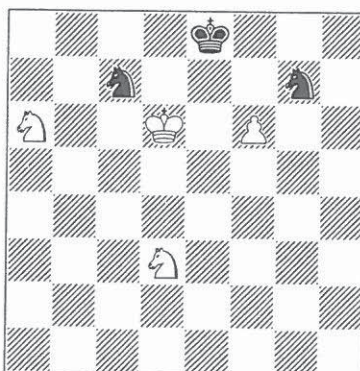
h1g8 4516.03 5/8 Draw

**No 16008 Albert van Tets** (South Africa). 1.Qd1/i Re1+ 2.Qxe1 Sxe1 3.Bxg5 Qg7 4.Rd8+ Sf8 5.Rxf8+ Kxf8 6.Bxh6 Qxh6 7.Rf4+ Kg7 8.Rg4+ Kf6 9.Rf4+ Kg5 10.Rf5+ draw/ii.

i) 1.Qf1(c1)? Rxc4, or 1.Qb1? Qb2 2.Rg6+ Kf7 3.Rg7+ Kf8.

ii) Kg4 11.Rf4+ Kg3 12.Rf3+ Kg4 13.Rf4+ Kg5 14.Rf5+ Kg6 15.Rf6+ Kxf6 stalemate.

**No 16009 A.van Tets**  
2nd honourable mention



d6e8 0008.10 4/3 Win

**No 16009 Albert van Tets** (South Africa). 1.Se5 Sb5+/i 2.Kc5/ii Kf8/iii 3.Sb8 Sd6/iv 4.Sbd7+ (Kxd6; Se8+) Kg8 (Ke8; fxg7) 5.f7+ Sxf7/v 6.Sf6+ Kf8 7.Sg6 mate.

i) Sf5+ 2.Kxc7 Sh6 3.Kd6 wins, or Kd8 2.Sxc7 Sf5+ 3.Ke6 Sh6 4.Sg4.

ii) 2.Kc6(d5)? Sh5 3.f7+ Ke7.

iii) Sh5 3.f7+ Ke7 4.Sb8 Sf6 5.Sbc6+ Kf8 6.Sd8 Sh7 7.Kxb5 Ke7 8.Kc6 Kxd8 9.Kd6 Kc8 10.Ke7 Kc7 11.Sg4 Kc6 12.Sf6.

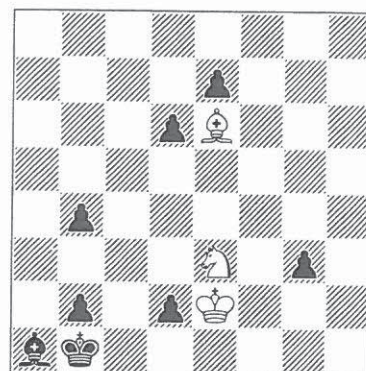
iv) Se6+ 4.Kxb5; Kg8 4.f7+ Kh7 5.Kxb5; Sc7 4.Sbd7+ (Kc6).

v) Kh7 6.Sf6+ Kh6 7.f8Q, but not 6.f8Q? Se6+.

**No 16010 Luis Miguel Gonzalez** (Spain). 1.Kd1/i d5/

ii 2.Bxd5 e6/iii 3.Bb3/iv g2 4.Sxg2 e5 5.Se3 e4 6.Sc2(c4) e3 7.Sa3+ bxa3 8.Bc4 ZZ e2+ 9.Bxe2 Ka2 10.Bc4+ and mate in two.

**No 16010 L.Gonzalez**  
3rd honourable mention



e2b1 0041.06 3/8 Win

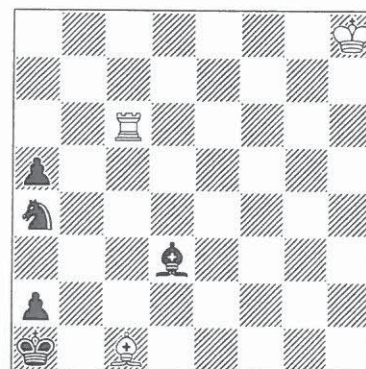
i) 1.Kxd2? d5 2.Bxd5 e6 3.Bb3 g2 4.Sxg2 e5 draws.

ii) g2 2.Sxg2 d5 3.Bxd5 e6 4.Bb3.

iii) g2 3.Sxg2 e6 4.Bb3.

iv) 3.Bc4? g2 4.Sxg2 e5 5.Se3 e4 6.Sc2 e3 7.Sa3+ bxa3 ZZ.

**No 16011 P.Michelet**  
4th honourable mention



h8a1 0143.02 3/5 Win

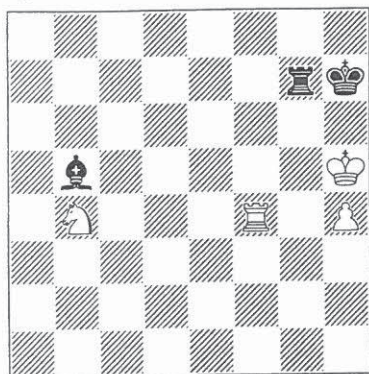
**No 16011 Paul Michelet** (France). 1.Ba3 Sb2/i 2.Rc1+ Bb1 3.Bf8 a4 (Sd3; 4.Bg7+) 4.Kg8/ii Sd3 5.Bg7+ Sb2

6.Kf7 a3 7.Kf6 Sd3 8.Ke6+ Sb2 9.Ke5 Sd3+ 10.Kd5+ Sb2 11.Kd4 Sa4 12.Kc4+ Sb2+ 13.Kc3 S-+ 14.Kd2+ and mates.

i) B- 2.Rc1+ Bb1 3.Rc8 B- 4.Rb8, or Sb2 4.Rb8 S- 5.Be7.

ii) 4.Kg7? Sd3 and Bg7+ isn't possible.

**No 16012 P.Michelet & J.Beasley**  
special honourable mention



h5h7 0431.10 4/3 Draw

**No 16012 Paul Michelet (France) & John Beasley (Great Britain).** 1.Re4 Ba4 2.Re1/i Bb3/ii 3.Rf1 Bc4/iii 4.Sd3/iv Bxd3/v 5.Re1 and:

- Bf5 6.Rg1/vi Bg6+/vii 7.Rxg6 Rxg6 stalemate, or  
- Bc4 6.Re6 Bxe6 stalemate.

i) 2.Sc2? Bc6 3.Re3 Bd5 but not Bxc2? 3.Rg4 Bd1 stalemate, or here Bg6+ 4.Rxg6 (Kg5) Rxg6 stalemate.

ii) Bd7 3.Re4 Ba4 4.Re1 repeats.

iii) Be6 4.Rf4 Bd7 5.Re4.

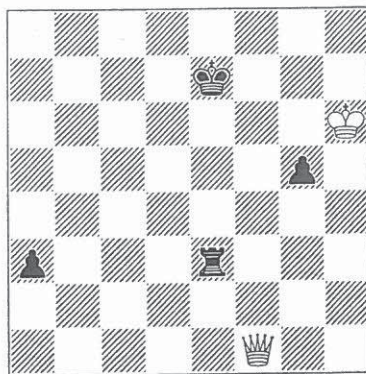
iv) 4.Rf2? Bb5 5.Sc6 Bxc6 6.Rf8 Bb5.

v) Bb5 5.Re1 Bxd3 6.Re6 (e4).

vi) 6.Re4? Bxe4? stalemate, but 6...Bg6+ and Bxe4+ wins.

vii) Rxg1 stalemate.

**No 16013 I.Akobia**  
1st special commendation



h6e7 1300.02 2/4 BTM, Win

**No 16013 Iuri Akobia (Georgia)** 1...Re6+ 2.Kh5/i a2 3.Kxg5 ZZ Re5+/ii 4.Kg6/iii Re6+ 5.Kg7 Kd8 6.Qd3+/iv Ke8 7.Qb5+ wins, or 1...a2 2.Kg6/v Kd8 (Re6+; Kxg5) 3.Qf8 wins.

i) 2.Kxg5? a2 ZZ 3.Kh5 Re3 4.Qa6 Rh3+ 5.Kg5 Rh2.

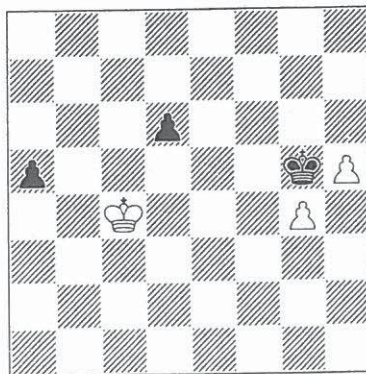
ii) Re4(e3) 4.Qf6+; Ke8(d7) 4.Qb5+; Kd8 4.Qd3+.

iii) 4.Kf4? Re6 5.Kg5 Re5+ repeats, or 4.Kg4(h4)? Re4+, or 4.Kh6? Re4(e3).

iv) 6.Qf8+? Kd7 7.Qa3 Re2, or 6.Qd1+? Ke7 7.Qf1 Kd8 repeats.

v) 2.Kxg5? Re6; 2.Qa1(c1)? Re2.

**No 16014 A. Villeneuve**  
2nd special commendation



c4g5 0000.22 3/3 Win.

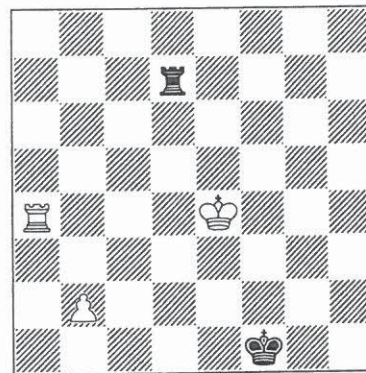
**No 16014 Alain Villeneuve (France).** 1.Kc3/i d5/ii 2.Kb3 Kh6 (d4; Kc4) 3.Ka4 Kg5 4.Kb5 d4 5.Kc4 wins.

i) 1.Kd4? a4 2.Kc4 d5+ 3.Kb4 d4 4.Kxa4 d3 5.Kb3 Kf4 6.h6 Ke3(f3) draws, or 1.Kb5? d5 2.Kxa5 d4 3.Kb4 Kf4 4.h6 d3 5.Kc3 Ke3 6.h7 d2 7.h8Q d1Q 8.Qe5+ Kf3 draws, or 1.Kd5? a4 draws.

ii) Kh6 2.Kd4 Kg5 3.Kc4 a4 (Kh6; Kb5) 4.Kb4 d5 5.Kxa4 d4 6.Kb3.

This study appeared in 2000, but as Villeneuve acted as judge for *diagrammes* 2000-1 it was decided that this study participated in the 2002-3 tourney.

**No 16015 I.Akobia**  
3rd special commendation



e4f1 0400.10 3/2 BTM, Win

**No 16015 Iuri Akobia (Georgia).** 1...Ke2 2.b3/i, and:

- Rb7 3.b4 Kd2 4.Kd4(d5) Kc2 5.Kc5/ii Rc7+ 6.Kb6 Rc4 7.Kb5 Kc3 8.Ra3+ wins, or:

- Rd8 (Kd2; Rd4+) 3.Ra2+ Kd1/iii 4.b4 Rb8 5.Kd3 Rd8+ 6.Kc3 Rc8+ 7.Kb3 wins.

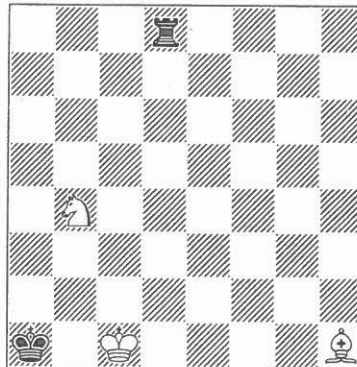
i) 2.Rd4? Rb7 (Rxd4+?; Kxd4) 3.b4 Rb5 4.Rc4 Kd2 5.Kd4 Rh5 6.Rc6 Rh4+

7.Kc5 Kc3 8.b5 Rh5+ 9.Kb6+ Kb4 draws, or 2.b4? Kd2 3.b5 Rb7 4.Rb4 Kc3 5.Rb1 Kc4.

ii) 5.Kc4? Rc7+ 6.Kb5 Kb3 7.Ra1 Rc8 8.Rb1+ Ka2(c2) 9.R- Rb8+.

iii) Ke1 4.b4 Rb8 5.Rb2.

No 16016 GHaworth  
4th special commendation



clal 0311.00 3/2 Win

No 16016 Guy Haworth  
(Great Britain). 1.Bc6 Rd6/i 2.Bb5 Rb6 3.Sc2+ Ka2 4.Bc4+ Rb3 5.Sd4 wins.

i) Rc8 2.Sc2+ Ka2 3.Bd5+, or Rd4 2.Sc2+.