

*Winter extra-tropical cyclones as a driver of seabird survival: variation between and within Common eider populations*

Article

Accepted Version

Guéry, L., Descamps, S., Hodges, K. I. ORCID: <https://orcid.org/0000-0003-0894-229X>, Pradel, R., Moe, B., Hanssen, S. A., Erikstad, K. E., Gabrielsen, G. W., Gilchrist, H. G., Jenouvrier, S. and Bêty, J. (2019) Winter extra-tropical cyclones as a driver of seabird survival: variation between and within Common eider populations. *Marine Ecology Progress Series*, 627. pp. 155-170. ISSN 1616-1599 doi: 10.3354/meps13066 Available at <https://centaur.reading.ac.uk/70254/>

It is advisable to refer to the publisher's version if you intend to cite from the work. See [Guidance on citing](#).

To link to this article DOI: <http://dx.doi.org/10.3354/meps13066>

Publisher: Inter Research

All outputs in CentAUR are protected by Intellectual Property Rights law, including copyright law. Copyright and IPR is retained by the creators or other copyright holders. Terms and conditions for use of this material are defined in the [End User Agreement](#).

[www.reading.ac.uk/centaur](http://www.reading.ac.uk/centaur)

**CentAUR**

Central Archive at the University of Reading

Reading's research outputs online

1 **Title:** Winter extratropical cyclone influence on seabird survival: variation between and within  
2 common eider populations

3 **Running page head:** Winter extratropical cyclones and eider survival

4

5 L. Guéry\*<sup>a</sup>, S. Descamps<sup>b</sup>, K. I. Hodges<sup>c</sup>, R. Pradel<sup>d</sup>, B. Moe<sup>e</sup>, S. A. Hanssen<sup>f</sup>, K. E. Erikstad<sup>f,g</sup>,  
6 G.W. Gabrielsen<sup>b</sup>, H. G. Gilchrist<sup>h</sup>, S. Jenouvrier<sup>i,j</sup> and J. Bêty<sup>a</sup>

7

8 <sup>a</sup> Département de Biologie and Centre d'études nordiques, Université du Québec à Rimouski,  
9 Rimouski, Canada

10 <sup>b</sup> Norwegian Polar Institute, Fram Center Tromsø, Norway

11 <sup>c</sup> Department of Meteorology, University of Reading, Reading, United Kingdom

12 <sup>d</sup> CEFE UMR 5175, CNRS - Université de Montpellier - Université Paul-Valéry Montpellier -  
13 EPHE, Montpellier, France

14 <sup>e</sup> Norwegian Institute for Nature Research, Trondheim, Norway

15 <sup>f</sup> Norwegian Institute for Nature Research, Arctic Ecology Department, Fram Centre, Tromsø,  
16 Norway

17 <sup>g</sup> Department of Biology, Centre for Biodiversity Dynamics, Norwegian University of Science  
18 and Technology, Trondheim, Norway

19 <sup>h</sup> National Wildlife Research Centre, Environment Canada, Ottawa, Canada

20 <sup>i</sup> Woods Hole Oceanographic Institution, Mailstop 50, Woods Hole, MA 02543, USA

21 <sup>j</sup> Centre d'Etudes Biologiques de Chizé, UMR7372 CNRS, F-79360 Villiers-en-Bois, France

22

23 \* corresponding author: lorelei.guery@gmail.com

24 **Keywords:** Seabirds; Extreme weather and climatic event; marine vertebrates, multi-event  
25 models; hidden states and mixture models; NAO; Arctic; inter and intra-population  
26 heterogeneity; migratory tactics; *Somateria mollissima*;

1 **1. Abstract**

2 Extratropical cyclones (ETCs) play a primary role in determining the variation in local  
3 weather and marine conditions in the mid-latitudes. ETCs have a broad range of intensities, from  
4 benign to extreme, and their paths, frequency, and intensity may change with global warming.  
5 However, how ETCs, and cyclones in general, currently affect marine wildlife is poorly studied  
6 and remains substantially unexplored. To understand how winter ETCs affect the inter-annual  
7 variability of adult seabird survival, we used capture-mark-recapture datasets collected in two  
8 arctic (northern Canada and Svalbard) and one subarctic (northern Norway) breeding populations  
9 of common eider, *Somateria mollissima*, over periods of 19, 16 and 30 years, respectively. We  
10 found significant negative correlations between winter ETC activity and female eider survival,  
11 but different mechanisms appear to be involved in the different studied populations. The number  
12 of winter ETCs, extreme or not, was found to be linked to survival without lags in the Canadian  
13 population, whereas amplitude and duration of extreme winter ETCs (with time lags) impacted  
14 female adult survival in the Svalbard and northern Norway eider breeding populations. We  
15 hypothesise that fjords in the wintering grounds of some populations act as climatic shelters and  
16 provide natural protection, and hence could partly explain inter-population heterogeneity in the  
17 response to ETCs. We suggest that ETCs represent a likely mechanism behind the frequently  
18 reported relationship between North Atlantic Oscillation and seabird survival in the North  
19 Atlantic.

20

21 **2. Introduction**

22 Understanding how individuals and populations respond to fluctuations in climatic  
23 conditions is critical in order to explain and anticipate changes in ecosystems. This requires

1 identifying relevant climatic parameters that affect demographic rates (e.g. survival, recruitment  
2 or breeding success; Jenouvrier 2013) throughout the annual cycle. The winter period is one of  
3 the critical stages influencing annual survival of migratory seabirds (Barbraud et al. 2000,  
4 Sandvik et al. 2005, Frederiksen et al. 2008) through direct or indirect effects of winter climatic  
5 conditions, e.g. on the availability of seabird prey or on the energetic balance of wintering  
6 seabirds (Grosbois & Thompson 2005, Harris et al. 2005).

7       Extreme climatic events such as heat waves, droughts, intense precipitation and storms  
8 are predicted in most future climate scenarios to increase in frequency in some regions and have  
9 been identified as one of the largest threats to wildlife (Easterling et al. 2000, IPCC 2002,  
10 Ummenhofer & Meehl 2017). While studies based on long-term population monitoring and  
11 fluctuations of extreme events over time are needed to quantify the effect of such events on bird  
12 demography (van de Pol et al. 2017), there are still very few examples of such studies  
13 (Jenouvrier et al. 2009, Boano et al. 2010, Genovart et al. 2013, Descamps et al. 2015). Some of  
14 them deal with the effect of tropical cyclones, defined as air masses rotating around a centre of  
15 low atmospheric pressure originating in the tropics. Their associated strong winds are often  
16 reported as examples of extreme events, which can drive wildlife demography (e.g. Dunham et  
17 al. (2011) on a lemur species, Pike and Stiner (2007) on sea turtle species or Chambers et al.  
18 (2011) on seabirds). However, the vulnerability of wildlife to cyclones occurring outside the  
19 tropics, i.e. extratropical cyclones (ETCs; defined as 30–90°N or S; Wang et al. 2013), has never  
20 been investigated although they are a dominant feature of mid-latitude atmospheric variability  
21 and play a primary role in determining local weather. Indeed, they are often associated with  
22 extreme winds and precipitation, as well as rapid changes in temperature (Hoskins & Hodges  
23 2002, Ulbrich et al. 2009, Wang et al. 2013). Hence, assessing the potential effects of ETCs and

1 their extremes on species breeding, wintering or migrating outside the tropics is important to  
2 understand ecological responses to changes in climatic conditions.

3 In this study, we examined the relationship between local winter ETCs and the adult  
4 female survival of a long-lived sea duck, the common eider (*Somateria mollissima*) in three  
5 breeding populations wintering in the North Atlantic. A previous study reported significant  
6 relationships between a global climatic index, the North Atlantic Oscillation (hereafter, NAO;  
7 Hurrell et al. 2003), and female eider survival (Guéry et al. 2017). The effects of the NAO on  
8 eider survival could potentially be explained by the ETCs. Indeed, the NAO is correlated with  
9 the mean intensity, track density and mean speed of ETCs (Sorteberg et al. 2005), especially in  
10 winter (Hurrell et al. 2003). We thus expect that the frequency and intensity of winter ETCs  
11 would be the main drivers behind the winter NAO-eider survival relationship.

12 Increased ETC activity could directly (no time lag) increase common eider foraging effort  
13 and energetic needs required to maintain body temperature (Heath et al. 2006, Heath & Gilchrist  
14 2010) and ultimately decrease their survival. In addition, ETCs could negatively and indirectly  
15 (with time lag) affect eider survival by influencing oceanographic conditions (Visbeck et al.  
16 2003, Sarafanov 2009) and hence eider food availability and/or food quality (Menge et al. 2008,  
17 Descamps et al. 2010). Heavy storms can indeed destroy bivalves beds at shallow depths  
18 (Brenko & Calabrese 1969, Reusch & Chapman 1995, Carrington 2002, Carrington et al. 2009)  
19 or reduce primary productivity (Fujii & Yamanaka 2008). These effects of ETCs could be  
20 modulated by coastal topography and by the presence of fjords on eider wintering grounds.  
21 Fjords, hereafter named “climatic shelters”, are defined as narrow inlets of the sea between cliffs  
22 or steep slopes, which can provide natural shelters from the wind (Howe et al. 2010). The  
23 climatic shelter effect of fjords has already been suggested for marine wildlife (Boje 2002,

1 Brown 2002, Sanino & Van Waerebeek 2008, Howe et al. 2010, Acevedo et al. 2017). Hence, we  
2 expect that the effects of ETCs on birds should be lessened for eiders wintering in areas offering  
3 climatic shelters.

4 Most female eiders breeding in Canada winter in southwest Greenland, where there is  
5 access to climatic shelters (fjords), while the rest of the population winter in southern Atlantic  
6 Canada, with no access to fjords (Mosbech et al. 2006, Guéry et al. 2017). Winter ETC activity  
7 also varies between these two distinct wintering grounds (e.g. more ETCs and a longer duration  
8 of extreme ETCs in southern Atlantic Canada; Table 1). We thus expect intra-population  
9 heterogeneity in the response of female eider survival to ETC activity in this Canadian breeding  
10 population, and we predict that winter ETC activity would have a more pronounced negative  
11 influence on the survival of eiders wintering in southern Atlantic Canada (Figure 1). The  
12 majority of females breeding in Svalbard winter in the northeast fjords of Iceland while the  
13 others winter in fjords of northern Norway. Female eiders breeding in northern Norway are year-  
14 round residents and spend the winter in fjords close to their breeding grounds. The direct effects  
15 of winter ETC activity on survival should thus be strongly reduced in both the Svalbard and  
16 Northern Norway breeding populations. Overall, the effects of ETCs on eider survival may thus  
17 vary among and within populations, depending on the presence of climatic shelters and on the  
18 frequency and/or intensity of the ETC affecting the specific wintering grounds used by birds.

19

### 20 **3. Materials and methods**

#### 21 *3.1. Study species and populations*

##### 22 *3.1.1. Common eider (Somateria mollissima)*

1 Common eiders are sea ducks that mostly breed in the Arctic and whose females are typically  
2 faithful to their natal colony (Wakeley & Mendall 1976, Swennen 1989). They start breeding  
3 between 2 and 5 years old (Hario et al. 2009) and can live an average of 15 years (Zammuto  
4 1986). Females do not feed and stay most of the time on their nest during incubation while males  
5 leave the colony soon after egg laying. Male recapture (or resighting) is very low which prevents  
6 any survival analyses based on CMR for eider males, and we thus focused our study on females.  
7 Only adult females (>2 years old as they come back to the colony to attempt breeding) were  
8 captured on their breeding grounds and included in the study, but their exact age was unknown.  
9 Eider winter diet includes several marine resource types such as bivalves, marine *polychaete*  
10 worms, gastropods, crustaceans and echinoderms (Goudie & Ankney 1986, Guillemette et al.  
11 1992, Merkel et al. 2007).

12

### 13 3.1.2. *Canadian Arctic, East Bay Island*

14 Data were collected from 1996 to 2014 on East Bay Island, Nunavut, Canada. An average of 545  
15 ringed female eiders (ranging from 209 in 1997 to 1035 in 2006) were annually resighted from  
16 observation blinds or physically captured. The wintering areas of 26 common eider females were  
17 determined (see below) using satellite transmitters implanted in 2001 and 2003 (Mosbech et al.  
18 2006), and in 2012 and 2013 (Gilchrist unpubl. data). Female eiders from East Bay winter either  
19 in southwest Greenland (78%) or near sea ice edges of southern Atlantic Canada (22%) along  
20 southern Labrador, Newfoundland, and south of the Gulf of Saint-Lawrence (Mosbech et al.  
21 2006). Sea ice is observed only in the southern Atlantic wintering area  
22 ([http://nsidc.org/data/seoice\\_index/archives/image\\_select.html](http://nsidc.org/data/seoice_index/archives/image_select.html)). In the Gulf of St. Lawrence,  
23 eiders preferably feed on blue mussels that they find near the shore, in kelp beds or in rocky



1 habitat (Guillemette et al. 1992), while they feed on gastropods in Newfoundland (Goudie &  
2 Ankney 1986) and on softshell clams *Mya eideri* and marine *polychaete* worms that they find in  
3 soft sediments in southwest Greenland (Merkel et al. 2007).

4

### 5 *3.1.3. Svalbard, Prins Heinrich Island*

6 An average of 65 females (ranging from 8 in 2003 to 136 in 2007, with 0 captured in 2000 and  
7 2006) were captured every year from 1999 to 2014 on Prins Heinrich Island, on the west coast of  
8 Svalbard, one of several islands housing an eider colony with 3000 breeding females. No  
9 heterogeneity in detection occurred (Guéry et al. 2017). About 77% of eiders in this breeding  
10 population migrated to northeastern Iceland and 23% to northern Norway (Hanssen et al. 2016),  
11 called zone 1 in Figure 1 and Figure 2. Wintering locations were determined from geolocators  
12 (Global Location Sensing or GLS logging; Wilson *et al.* 1992) deployed on female common  
13 eiders breeding on Storholmen Island, located 5 km NE of Prins Heinrich Island. A total of 95  
14 females were equipped in June or July over four years (2009, 2010, 2011 and 2013), while 48  
15 females were recaptured and data was successfully retrieved from 47 geolocators. Details on  
16 capture, geocator deployment, and the calibration, smoothing and calculations of the  
17 geocator data are described in Hanssen et al. (2016).

18

### 19 *3.1.4. Northern Norway, Grindøya Island*

20 This study was conducted in an eider colony (200-500 pairs) on Grindøya, an island near  
21 Tromsø, northern Norway. During the breeding seasons of 1985-2014, nesting female eiders  
22 were captured (average of 104; ranging from 36 in 2014 to 235 in 1995) with a noose pole during  
23 the incubation period, i.e. only physical recaptures occurred (no band reading at distance).

1 Females from Grindøya annually breed in habitats including beach, stunted forest or bushes that  
2 induced heterogeneity in detection probability (Guéry et al. 2017). They are resident and  
3 preferably feed on blue mussels. They thus spend the winter in the vicinity of their breeding  
4 location in northern Norway (Bustnes & Erikstad 1993, Anker-Nilssen et al. 2000), called zone 2  
5 in Figure 1 and Figure 2, all exposed to the same winter conditions.

6

### 7 ***3.2. Wintering areas***

8 Wintering areas were defined using tracking data for the two migrating populations: from  
9 satellite transmitters for the Canadian breeding population and geolocators for the Svalbard  
10 breeding population. All tracking data were filtered to keep only reliable locations following the  
11 procedures described in Mosbech et al. (2006) for the Canadian breeding population and in  
12 Hanssen et al. (2016) for the Svalbard breeding population. Due to the lack of variation in day  
13 length with respect to latitude close to equinoxes, latitudes estimated from geolocators are  
14 unreliable for these specific periods and data were excluded close to the spring equinox (March)  
15 for Svalbard eiders. Thus, we considered winter locations from December to March for the  
16 Canadian population and from December to February for the Svalbard population. We then  
17 calculated kernel densities (90%) and kernel contours using the *adehabitatHR* package in R  
18 (Calenge 2006). Finally, as female eiders only reside at sea and along shorelines during winter,  
19 we subtracted land cover from the density core contours to get the final wintering areas.

20 No tracking data was available for females from northern Norway, but eiders are known  
21 to stay close to the shore in the vicinity of their breeding island (mostly within 50 km, Bustnes  
22 and Erikstad unpublished data) in water shallower than 10m (Bustnes & Lønne 1997). As eiders  
23 spread along the shoreline, we defined their wintering area as the smallest ellipse that is allowed

1 by the grid resolution of the data used to identify ETCs and is parallel to the shoreline and  
2 centred on the breeding island (i.e., with a major axis of 200 km and a minor axis of 160 km).  
3 Different winter ranges (50 and 100 km added on each axes) were also tested and results did not  
4 change significantly; the length-width combination model with the lowest QAICc was selected  
5 (Table S2 in the supplementary material). We also subtracted land cover to get the final  
6 wintering areas. Grid cells used to extract winter ETCs variables on each of these final wintering  
7 areas are presented in Figure 2.

8

### 9 **3.3. Variables considered**

#### 10 *3.3.1. Winter ETC variables*

11 ETCs in the northern hemisphere are weather systems with an anticlockwise circulation,  
12 around a centre of low atmospheric pressure. They regulate local weather and contribute to the  
13 general circulation of the atmosphere through the transport of energy and momentum polewards  
14 (Hoskins & Hodges 2002, Ulbrich et al. 2009, Wang et al. 2013). ETCs are different from  
15 tropical cyclones since they primarily get their energy from horizontal temperature contrasts,  
16 though diabatic processes can also play an important role in their development, whereas tropical  
17 cyclones are dependent on evaporation over warm tropical waters and develop via the release of  
18 latent heat. Even if tropical cyclones can undergo extratropical transition (Jones et al. 2003) to  
19 become extratropical cyclones, no tropical cyclones reached the latitudes of the eider wintering  
20 areas during the study period.

21 Several methods exist to track ETCs, using either minimum pressure or maximum  
22 vorticity (in the northern hemisphere), which is a measure of the spin of the air. Because these  
23 methods are different in what and when a cyclone is defined, they often differ in how many

1 cyclones are detected. However, differences mainly occur for the weaker storms, and they  
2 generally agree for the strongest ones. Readers are referred to Ulbrich et al. (2009) for a  
3 comprehensive review of studies using different cyclone tracking methods. In this study, we used  
4 the approach described in Roberts et al. (2014) and Hoskins and Hodges (2002), i.e. ETCs are  
5 identified and tracked using the maximum vorticity approach based on the 850hPa relative  
6 vorticity since it represents smaller spatial scales than the pressure and is less influenced by the  
7 large-scale background (Hodges 1994, Hoskins & Hodges 2002, Roberts et al. 2014). To remove  
8 short-lived and stationary systems, tracks were retained for further analysis only when they  
9 lasted longer than 1 day and travelled further than 1000 km. Thus, we considered all synoptic  
10 scale (1000-2500 km) ETCs in the northern hemisphere (30-90<sup>0</sup>N), which cover a broad range of  
11 intensities, extreme or not. Data used for the cyclone tracking are from the European Centre for  
12 Medium-Range Weather Forecasts (ECMWF) Interim reanalysis (ERA-Interim, Dee et al. 2014)  
13 for the December-March period of 1979-2015 at 3-hour time resolution (see Roberts et al. 2014).

14 Properties from the female eider wintering areas were added to the tracks by defining a  
15 spherical cap sampling region of arc radius 6° (~670km) centred on the ETC positions (adequate  
16 for capturing the wind extremes for individual ETCs, Bengtsson et al. 2009; Figure 3). Varying  
17 this radius between 5-10 degrees did not change our main conclusions. To calculate the winter  
18 ETC activity experienced by female eiders, we considered all ETC regions overlapping with the  
19 population-specific wintering area defined above (Figure 3). All the wind-related variables added  
20 to the vorticity tracks were based on the 10m winds above the sea surface, available from the  
21 ERA-Interim data, as eiders generally fly just a few meters above the water. This was achieved  
22 by masking the 10m wind data to retain only data within the eider wintering areas.

1 **4.** Several classifications of extreme ETCs exist (see review of Catto (2016)), and we used the  
2 one based on wind impact, one of the major impacts of ETCs. We defined extreme ETCs as  
3 cyclones that reached at least once a wind speed above the 95<sup>th</sup> percentile threshold of the  
4 local wind speed distribution (Table 1). Wind speeds can vary substantially in our study  
5 areas. In Greenland for example, winter wind speeds associated with ETCs were an average  
6 of  $11.7 \pm 0.2 \text{ m s}^{-1}$ , while wind speed reached  $28.5 \text{ m s}^{-1}$  during the strongest ETC (  
7 **5.** Table 1). To describe ETC activity in each wintering area during the winter (December to  
8 March), we considered six variables from mean to extreme ETC activity within the ETC  
9 regions overlapping with the population-specific wintering area. The two variables for the  
10 mean ETC activity are the total number of ETCs (Number of ETCs), where an ETC is  
11 counted if the sampling region overlaps a wintering region, and their mean wind speed  
12 (Mean wind). The four other variables measure the number of extreme ETCs, i.e. with wind  
13 speeds above the 95<sup>th</sup> percentile threshold of the local wind speed distribution at least once in  
14 the overlap region, the number of days of extreme ETC (Duration extreme ETCs), the  
15 duration of the longest ETC (Longest ETC) and the maximum wind speed of the strongest  
16 ETC (Max wind), all relative to the overlap. Descriptive statistics of each variable on  
17 wintering area are described in

18 Table 1. Correlations (statistical test based on Pearson's correlation coefficient with the  
19 function `cor.test` in the software R) between variables of winter ETC activity and winter NAO  
20 are presented in the supplementary material (Figure S1-S9) for each wintering area. The winter  
21 NAO was significantly correlated with at least one winter ETC variable and in most cases with  
22 the number of winter ETCs.

23

### 1           5.1.1. *Winter North Atlantic Oscillation*

2           Winter North Atlantic Oscillation (NAO) values are based on the difference in  
3 normalized sea level pressure between Lisbon, Portugal and Stykkisholmur/Reykjavik, Iceland.  
4 Data from [https://climatedataguide.ucar.edu/climate-data/hurrell-north-atlantic-oscillation-nao-](https://climatedataguide.ucar.edu/climate-data/hurrell-north-atlantic-oscillation-nao-index-station-based)  
5 [index-station-based](https://climatedataguide.ucar.edu/climate-data/hurrell-north-atlantic-oscillation-nao-index-station-based) were used in the analysis. We defined the winter NAO as monthly NAO  
6 values averaged from December to March (Descamps et al. 2010, Guéry et al. 2017), when all  
7 the birds were on their wintering grounds.

### 9           **5.2. *Mark-recapture modelling procedure***

10           We tested the effect of local winter ETCs variables extracted from wintering locations on  
11 female eider survival with and without taking into account survival heterogeneity among  
12 individuals. Individual Detection and Survival Heterogeneity (IDSH) mixture model developed  
13 in Guéry *et al.* (2017) can be used to classify female eiders from the Canadian breeding  
14 population into two groups, which likely represent birds using two geographically distinct  
15 wintering locations (southern Atlantic Canada vs. Greenland). We used this IDSH mixture model  
16 to assign each female to a specific group and then tested whether variations in winter ETC  
17 variables on each wintering location explain eider survival variation in one of the two groups. A  
18 lack of recapture data in the Svalbard breeding population prevented us from properly testing  
19 intra-population heterogeneity, so the ETC effect of each wintering ground (either Iceland or  
20 northern Norway) was tested on the whole population. To assess if ETC influences indirectly or  
21 directly female survival, we studied the influence of ETC activity with and without time lags.  
22 We considered the frequency, amplitude and duration of the winter ETCs (see details in the  
23 winter ETC variables section). We also compared the relationships between female eider

1 survival and winter ETCs to the one between survival and winter NAO reported in Guéry et al.  
2 (2017).

3 We analysed 3954, 553 and 1336 individual encounter histories of female Common  
4 eiders respectively from the Canadian Arctic, Svalbard and northern Norway. We first checked  
5 the fit of our datasets to the single-state Cormack-Jolly-Seber (CJS) reference model (Burnham  
6 1987) with goodness-of-fit tests computed using U-CARE (Choquet et al. 2009a) and presented  
7 in Supporting Information S1. Avian cholera outbreaks have occurred regularly in the Canadian  
8 population, which strongly affected eider survival (Descamps et al. 2009, Descamps et al. 2012).  
9 To account for this cause of mortality from the analysis, we removed the individuals that died  
10 because of the cholera at their last capture/recovery (right-censoring). Indeed, cholera mortality  
11 only occurred on the breeding grounds (Buttler 2009) and all individuals that died from cholera  
12 were collected at the end of the season and their ring reported. Models were implemented in  
13 program E-SURGE (Choquet et al. 2009b). Details about the implementation of the IDSH  
14 mixture models in program E-SURGE are given in Appendix S2 of Guéry et al. (2017). We then  
15 performed analyses of deviance (ANODEV, Grosbois et al. 2008) to test whether or not  
16 variations in the covariate were significantly associated with variation in female eider survival in  
17 each population, and we calculated the proportion of deviance (Dev) explained by a given  
18 covariate as:

$$19 \quad R_{Dev}^2 = \frac{Dev(F_{cst}) - Dev(F_{co})}{Dev(F_{cst}) - Dev(F_t)}$$

20 where  $F_{cst}$ ,  $F_t$  and  $F_{co}$  refer respectively to models with constant, time and covariate effects. We  
21 ranked our models with the Akaike's information criterion (Burnham & Anderson 2002)  
22 adjusted for overdispersion (Quasi-Akaike's information criterion, QAIC) for the Canadian  
23 population, adjusted for small sample size (Second-Order Akaike's information criterion, AICc)

1 for the Svalbard population and adjusted for both overdispersion and small sample size (QAICc)  
2 for the northern Norwegian population.

3

## 4 **6. Results**

### 5 ***6.1. Relationships between winter ETCs and female eider survival***

6 In the Canadian breeding population, adult female eider survival was significantly linked  
7 to the number of winter ETCs in the southern Atlantic Canada with no time lag (model 1<sub>time</sub>  
8 2<sub>Number of ETCs of sAC</sub>; **Table 2**; Figure 4) and the duration of the longest ETCs in southwest  
9 Greenland with a lag of two years (model 1<sub>Longest ETC\_L2 of G</sub> 2<sub>constant</sub>; **Table 2**). As predicted, the  
10 most parsimonious model detected different survival responses among individuals, i.e. a  
11 significant individual heterogeneity in the survival response to winter ETC activity in this  
12 population. In this model, survival variation of one of the two groups, which represented 24% of  
13 individual capture histories, was negatively related to the number of winter ETCs in southern  
14 Atlantic Canada (model 1<sub>time</sub> 2<sub>Number of ETCs of sAC</sub>; group H2; slope on logit scale =  $-1.46 \pm 0.38$   
15 SE;  $R^2_{Dev} = 0.39$ ; **Table 2**; Figure 4). Survival of the other group (group H1, 76% of capture-  
16 histories) was significantly reduced by the duration of the longest ETC in southwest Greenland  
17 with a lag of two years (model 1<sub>Longest ETC\_L2 of G</sub> 2<sub>constant</sub>; slope on logit scale =  $-0.41 \pm 0.08$  SE;  
18  $R^2_{Dev} = 0.39$ ; **Table 2**).

19 Survival of female eiders breeding in Svalbard and northern Norway was associated with lagged  
20 winter ETC activity (**Table 2**). Survival of females breeding in Svalbard was negatively associated  
21 with i) the wind speed of the strongest ETC recorded on the Norwegian wintering ground zone 1  
22 with a lag of two years (model Max wind\_L2 of No;  $R^2_{Dev} = 0.30$ ; slope on logit scale = -  
23  $0.65 \pm 0.26$  SE; **Table 2**;

24 **Figure 5**) and ii) the duration of extreme ETCs in Greenland with the same time lag (model  
25 Duration extreme ETCs\_L2 of I;  $R^2_{Dev} = 0.28$ ; slope on logit scale =  $-0.47 \pm 0.24$  SE; **Table 2**).



1 In the northern Norway breeding population, survival of female eiders was significantly  
2 reduced by maximum wind speed of the strongest ETC of northern Norway zone 2 (Fig.2) with  
3 time lags of one and two years ( $R_{Dev}^2 = 0.22$ ; see Table 2; Figure 6). Moreover, all individuals  
4 showed the same response in survival (i.e., no significant heterogeneity was detected,  
5  $\Delta QAICc > 3$ ; Table 2).

## 6 ***6.2. Comparison between the effect of winter extra tropical cyclones and North Atlantic*** 7 ***Oscillation***

8 Adding year 2014 to the time series used in Guéry et al. 2017 did not change their results  
9 about the relationship between winter NAO and female eider survival in all three breeding  
10 populations, especially for the Svalbard population (i.e., winter NAO marginally explains  
11 survival fluctuations,  $p = 0.073$ ; Table 2). We thus used this additional year in our analyses.

12 In the wintering areas of the Canadian population, the winter NAO was highly and  
13 significantly linked to the number of winter ETCs on the southern Atlantic Canada wintering  
14 ground ( $R^2 = 0.90$ ;  $p < 0.0001$ ; Fig S2.1; Supporting Information S2), whereas it was not linked to  
15 winter ETC activity in Greenland with a lag of 2 years (Fig S2.3; Supporting Information S2).  
16 Moreover, the number of ETCs in southern Atlantic Canada performed as well as the winter  
17 NAO to explain female survival at a population level ( $h * NAO$  versus  $h * \text{Number of ETCs of sAC}$ ;  
18  $\Delta QAIC = 1.35$ ;  $R_{Dev}^2 = 0.27$  and  $0.26$  respectively). However, when we tested the effect of the  
19 number of winter ETCs in southern Atlantic Canada and the winter NAO on each group  
20 separately, the number of winter ETCs performed better ( $\Delta QAIC = 3.81$ ). It only explained  
21 ( $R_{Dev}^2 = 0.35$ ) survival variation of the group migrating in this area and explained it better than  
22 the direct winter NAO (models  $1_{time} 2_{\text{Number of ETCs of sAC}}$  versus  $1_{time} 2_{NAO}$ ; Table 2).

1 For the Svalbard population, the lagged winter NAO was significantly associated with the  
2 total number ETCs in Iceland (e.g. with winter NAO with one-year lag:  $R^2 = 0.74$ ;  $p = 0.001$ ; Fig  
3 S2.4; Supporting Information S2) but not significantly in northern Norway zone 1 (e.g. with  
4 winter NAO with one-year lag:  $R^2 = 0.48$ ;  $p = 0.073$ ; Fig S2.6; Supporting Information S2).  
5 However, the ETC related covariates performed better than the NAO to explain variation in  
6 survival of Svalbard eiders. No significant influence of winter NAO (lagged or not) on survival  
7 was detected, whereas the maximum wind speed of ETCs in Norwegian wintering grounds (with  
8 a 2 years-lag) performed and explained female eider survival better than winter NAO regardless  
9 of time lag (e.g.  $\Delta QAIC = 2.00$  between models Max wind\_L2 of No and NAO; **Table 2**).

10 For the Norwegian breeding and wintering population, the winter NAO was significantly  
11 associated with the number of extreme winter ETCs (e.g. with winter NAO with one-year time  
12 lag:  $R^2 = 0.37$ ;  $p = 0.049$ ; Fig S2.8; Supporting Information S2). Survival of female eiders  
13 breeding and wintering in northern Norway was better explained by the winter NAO with a lag  
14 of two years alone (model NAO\_L2,  $R_{Dev}^2 = 0.32$ ; **Table 2**) than by any winter ETC-related  
15 covariate. The winter NAO with lags was not significantly associated to wind speed of the  
16 strongest ETC with lags (Fig S2.8; Fig S2.9; Supporting Information S2) and including both  
17 variables into the same model improved its performance. Models including the effects of both  
18 winter NAO and winter ETC activity performed better (**Table 2**) and explained a larger proportion  
19 of variation in survival (**Table 2**) than a model with winter NAO only. In particular, the winter  
20 NAO with a lag of two years combined with the maximum wind speed of ETCs with a lag of one  
21 year explained 53% of female eider survival variation (model NAO\_L2+Max wind\_L1 of nNo;  
22 **Table 2**).

23

## 1 **7. Discussion**

2           The marine environment in non-tropical regions is highly influenced by ETCs (Hoskins  
3 & Hodges 2002, Ulbrich et al. 2009, Wang et al. 2013). Although several marine species winter  
4 in these regions, no study has quantitatively investigated the effect of cyclones occurring outside  
5 the tropics on wildlife. By coupling long-term capture-mark-recapture data with individual  
6 tracking information to identify wintering areas, we provide the first quantitative study of the  
7 impact of winter extratropical cyclones (ETCs) and their extremes on the annual adult survival of  
8 a long-lived marine duck, the common eider. As predicted, we detected inter- and intra-  
9 population heterogeneity in the response to winter ETC activity, which could be partly driven by  
10 the presence of climatic shelters on the specific wintering grounds used by birds. Moreover, the  
11 underlying mechanisms involved in the winter ETC effects seem to differ between and within  
12 populations, as it can be with or without time lags.

13

### 14 ***7.1. Climatic fluctuations affect survival of a long-lived species***

15           The winter ETC activity seems to have negative effects on female eider survival in all  
16 three breeding populations studied and explained between ca. 22% and 43% of the inter-annual  
17 variation in survival. These effects are similar to the effects of tropical hurricanes recorded on  
18 Mediterranean Cory's shearwaters migrating to the Central Atlantic and Southern Atlantic  
19 (Boano et al. 2010). Eiders are long-lived and their population growth rate is very sensitive to  
20 changes in adult survival (Sæther et al. 2000). Adult survival is expected to be buffered against  
21 environmental variability (Gaillard & Yoccoz 2003), but several studies also showed that  
22 climatic variation, whether extreme or not, could affect the adult survival of long-lived species  
23 (e.g. Sandvik et al. 2005). Detecting a negative influence of local (here winter ETC activity)

1 and/or global (e.g. winter NAO) climatic variables on survival is thus important to better  
2 understand the future viability of their populations.

3

#### 4 ***7.2. Direct impact of winter ETCs versus indirect impact of their extremes on survival***

5 Winter ETC activity can directly increase seabird mortality through different  
6 mechanisms. They can disturb their feeding behaviour, which is sensitive to the occurrence of  
7 stormy weather (e.g. Finney et al. 1999). Common eiders are mostly visual feeders (Frimer  
8 1994), so foraging can be affected by water turbidity associated with strong winds or sea-surface  
9 conditions that reduce visual acuity (Eriksson 1985, Henkel 2006). Since ETC activity increases  
10 winds, waves and current speed, it can also increase foraging costs. While common eiders  
11 employ a variety of tactics to reduce energy costs during diving, descent duration and number of  
12 strokes during descent increase exponentially with increasing current velocity, suggesting an  
13 increase in the energetic costs of diving (Heath et al. 2006, Heath & Gilchrist 2010). During  
14 ETCs, fast currents, the strong increase in drag and energetic costs of diving can even make  
15 foraging unprofitable with net energy gain per dive cycle predicted to reach zero and become  
16 unprofitable at 1.21 m s<sup>-1</sup> at 11.3 m depth (Hawkins et al. 2000, Heath et al. 2006, Heath &  
17 Gilchrist 2010). Common eiders stop foraging and rest well below this threshold (Heath &  
18 Gilchrist 2010), which lowers their energetic gains (Dehnhard et al. 2013). Adding to the fact  
19 that the winter period reduces the feeding window of these diurnal feeders (Systad et al. 2000,  
20 Heath & Gilchrist 2010), winter ETC activity can potentially cause starvation (Chambers *et al.*  
21 2011).

22 On the other hand, extreme ETCs may impact eider survival through indirect (lagged)  
23 effects via the food chain. Different mechanisms can be proposed; extreme wind events

1 associated with extreme ETCs are an important natural disturbance in coastal systems  
2 (Richardson & LeDrew 2006), decreasing the food availability of common eiders' benthic prey.  
3 Winter diet of common eiders includes different marine resources depending on their wintering  
4 grounds. Eiders consume preferably blue mussels of smaller sizes (Bustnes & Erikstad 1990,  
5 Varennes et al. 2015) found near the shore, in kelp beds or rocky habitat in the Gulf of St.  
6 Lawrence (Guillemette et al. 1992) or in northern Norway (Bustnes & Erikstad 1988), softshell  
7 clams *Mya eideri* and marine *polychaete* worms found in soft sediments in southwest Greenland  
8 (Merkel et al. 2007), gastropods in Newfoundland (Goudie & Ankney 1986), or sometimes  
9 crustaceans and echinoderms. They can also include sea urchins found in shallow water near the  
10 shore (<10 m; Cottam 1939, Madsen 1954, Bustnes & Lønne 1997).

11 Extreme cyclones can remove large intertidal and subtidal areas rich in fauna and  
12 macroalgae (e.g. Thomsen et al. 2004), destroy bivalve beds at shallow depths (Reusch &  
13 Chapman 1995, Carrington 2002, Carrington et al. 2009) and directly decimate sea urchins and  
14 drive their community structure (Ebeling et al. 1985). In addition, winter ETCs can induce strong  
15 wave action, which lowers blue mussel growth rates (Sukhotin et al. 2006), reduce primary  
16 productivity, lowering mussel growth rates to taking 3-5 years to reach 1-2cm (Bustnes &  
17 Erikstad 1990, Varennes et al. 2015) if carried to the extreme (Fujii & Yamanaka 2008), and act  
18 on intertidal gastropod populations via size-specific mortality and indirectly affect them by  
19 altering their foraging behaviour, growth and life histories (Brown & Quinn 1988). Also, oceanic  
20 volume fluxes are positively related to Nordic seas cyclone activity (Sorteberg et al. 2005)  
21 providing transportation of blue mussel larvae over long distances (Berge et al. 2005). As larvae  
22 settle when they reach a size between 0.026 - 0.035mm (Sprung 1984) and current velocity  
23 drives the settlement of marine *polychaete* worms (Pawlik & Butman 1993), extreme winter ETC

1 activity could decrease these species' settlement with higher velocity and thus decrease food  
2 availability for eiders in subsequent years. Hence, extreme ETCs may have cascading effects on  
3 eider survival through a variety of mechanisms affecting the availability of their prey.

4

5 ***7.3. Contrasted effect of winter ETC activity between and within eider populations: a***  
6 ***“climatic shelter” effect?***

7 The strongest relation we detected was a direct and negative link (consistent with our  
8 predictions) between the total number of winter ETCs in southern Atlantic Canada and the  
9 survival of female eiders breeding in Canada. More specifically, this variable was only  
10 associated with the survival of one group of birds (group H2; 24% of individual capture  
11 histories), potentially those migrating to the southern Atlantic Canada area as suggested in Guéry  
12 et al. (2017). On the other hand, the wind speed of the strongest extreme winter ETCs impacted,  
13 with a time lag, the survival of female eiders breeding and wintering in northern Norway, and  
14 also, although less strongly, those breeding in Svalbard. Indirect effects of the duration of  
15 extreme ETC activity in southwest Greenland were also detected in one group of Canadian birds  
16 (group H1; 76% of individual capture histories), potentially those wintering on the southwest  
17 Greenland ground as suggested in Guéry et al. (2017); indirect impacts of the same variable in  
18 Iceland was observed on survival of female eiders from the Svalbard breeding population.

19 We propose that the detected inter- and intra-population heterogeneity, i.e. the direct  
20 versus indirect impacts of winter ETC activity on survival described above, can be partly  
21 explained by variation in the natural “climatic shelters” available on eider wintering grounds. We  
22 suggest that direct effects can occur in the absence of shelter, whereas indirect effects likely  
23 occur via the impact of ETC activity on prey availability. Shelter against wind can result in

1 microclimate effects and affect eider energetics during incubation (Høyvik Hilde et al. 2016). At  
2 a larger spatial scale, the shelter effect of fjords on marine wildlife has been proposed in the  
3 literature (see review by Howe et al. (2010)). Howe et al. (2010) defined fjords as “inshore  
4 sheltered deep-water bodies, which often possess a unique biogeochemistry, fauna, hydrography  
5 and sedimentation”. Fjord and channel systems in Scandinavia, Iceland and Greenland form  
6 some of the largest estuarine areas in the world and can be used by marine mammals seeking  
7 refuge from severe weather conditions (Sanino & Van Waerebeek 2008, Acevedo et al. 2017) or  
8 for spawning grounds, nursery, and recruitment areas by many marine fish with contrasting life  
9 histories, varying from mesopelagic (Lopes 1979) and pelagic (Brown 2002) to demersal fish  
10 (Boje 2002).

11 **8.** Female eiders wintering in southern Atlantic Canada feed along the sea ice edge (Goudie &  
12 Ankney 1986) with potentially few climatic shelter areas. These individuals can thus be  
13 directly exposed to harsh weather conditions and hence be directly impacted by winter ETCs  
14 (Figure 1). In addition, sea ice formation covers shallow coastal waters, so wintering sea  
15 ducks are cut off from their marine resources and lose potential feeding sources that could  
16 have compensated losses of energy caused by low air temperature and foraging in deeper and  
17 agitated waters (Vaitkus & Bubinas 2001). On the contrary, Canadian breeding female eiders  
18 that winter in southwest Greenland are likely less vulnerable to direct effects of ETC activity  
19 because they have access to fjords extending deep inland (Ravn Merkel et al. 2002), which  
20 may provide shelters that are well protected against extreme ETC winds. In addition, female  
21 eiders from Svalbard or northern Norway wintering along the Norwegian coast, although  
22 facing weaker winter ETC activity than in Canada (

1           Table 1), can feed along the shores of the fjords (Bustnes and Erikstad unpublished data),  
2   which may also provide good climatic shelters and reduce the direct effects of ETC activity.  
3   However, the effect of ETCs on benthic invertebrates in fjords or in exposed coastal areas  
4   deserves further investigation to better understand the role of natural climatic shelters on the food  
5   chain and on eider survival.

6

### 7           ***8.1. Effect of winter NAO and ETCs***

8           The potential mechanisms involved in the relationships between female eider survival,  
9   winter NAO and local ETC activity seem to differ between populations. Winter ETCs appeared  
10   to be one of the main drivers explaining the observed NAO effects on female eider survival  
11   (Guéry et al. 2017) but only in the Canadian wintering population. In the Norwegian breeding  
12   population, we found evidence that NAO and ETCs can have independent and cumulative  
13   influences. For females breeding in the Canadian Arctic, the previously detected direct effect of  
14   the winter NAO might be due, at least in part, to its relation with the number of ETCs in the  
15   southern Atlantic Canada. Conversely, lagged winter NAO and lagged wind speed of the  
16   strongest ETC in northern Norway seem to have independent and cumulative influences on  
17   survival of females breeding and wintering in northern Norway, explaining together ca. 53% of  
18   the adult female eider survival. The link between these two variables with oceanographic  
19   conditions in the North East Atlantic could explain this cumulative effect. A low winter NAO  
20   with a lag of up to 3 years leads to an increase in sea temperature and salinity in the sub-polar  
21   North Atlantic (Sarafanov 2009). This increase in sea temperature and salinity may have in turn a  
22   negative impact on blue mussel larvae and adult survival (Brenko & Calabrese 1969, Braby &  
23   Somero 2006, Menge et al. 2008), adding to the negative effect of ETC activity on them.



1           Large-scale climate indices, such as the NAO, are often used as proxies of environmental  
2 conditions as they integrate both temporal and spatial components of several weather variables  
3 (Stenseth & Mysterud 2005). However, our study showed that local weather variables are  
4 essential and complementary to sharpen our understanding of the mechanisms linking climate  
5 fluctuations and wildlife responses.

## 7           ***8.2. Effect of extreme events on survival***

8           While many studies have focused on a single extreme climatic event (ECE), or one  
9 characteristic of several ECEs (usually frequency), we have investigated several characteristics  
10 of ECEs (frequency, duration and amplitude) over a long-term study. Interestingly, female  
11 common eider survival was affected by the amplitude and duration of ECEs but not by their  
12 frequency; Canadian female survival was not impacted by the number of extreme ETCs in  
13 southern Atlantic Canada but the total number ETCs, whether extreme or not. We detected an  
14 effect of the amplitude of ECEs in regions of relatively low ETC activity, while we found an  
15 effect of the duration in areas of intense ETC activity. This pattern probably stood out because  
16 the effect of ECEs occurred mostly through the food web in our study systems, where long  
17 lasting or large ECEs more likely affect the benthic ecosystems. Our results are noteworthy as  
18 population models focusing on the impact of ECEs usually focus on their frequency (e.g.  
19 (Jenouvrier et al. 2015) rather than their duration or amplitude. Frequency, amplitude and  
20 duration of extreme weather events are predicted to increase in most future climate scenarios  
21 (Rind et al. 1989, Easterling et al. 2000), potentially impacting population persistence.

## 23           ***8.3. Conclusion***

1 Even if adult survival of long-lived species should be buffered against environmental  
2 variability(Gaillard & Yoccoz 2003), extreme weather conditions (such as extreme ETCs)  
3 significantly affect adult survival during the wintering period. This is especially important in the  
4 case of extreme weather events whose frequency, amplitude and duration are predicted to  
5 increase in most future climate scenarios (Rind et al. 1989, Easterling et al. 2000), especially at  
6 high latitudes in the northern hemisphere (Bengtsson et al. 2009, Ulbrich et al. 2009).

7 As previously emphasized (Guéry et al. 2017), to predict the effects of global change on  
8 wild populations, differences in individual life-history strategies (e.g. migration strategies) must  
9 be taken into account as they introduce inter- and intra-population heterogeneities in the response  
10 to climatic fluctuations. In our case, an increase in winter ETC severity or frequency could  
11 directly affect only a segment of the population depending on where birds winter. Although it  
12 can be generated by different factors (e.g.. wintering strategy or age), such intra-population  
13 heterogeneities will impact population trajectories and viability, and should thus be incorporated  
14 into population models (Coulson et al. 2001, Benton et al. 2006, Kendall et al. 2011).

15

## 16 **9. Acknowledgements**

17 We would like to thank all of the summer research assistants who worked at the three  
18 research locations over the years, Isabel Buttler and Rob Kelly for data management of the  
19 Canadian population and their valuable help at different stages of this study and Kimberly  
20 Malcolm for her essential linguistic revision. The study in the Canadian Arctic was supported by  
21 Environment Canada, Nunavut Wildlife Management Board, Greenland Institute of Natural  
22 Resources, Polar Continental Shelf Project, Fonds Québécois de la Recherche sur la Nature et les  
23 Technologies, Canadian Network of Centres of Excellence-ArcticNet, Natural Sciences and

1 Engineering Research Council of Canada, and the Department of Indian Affairs and Northern  
2 Canada. The study in northern Norway was supported by the Norwegian Research Council,  
3 Univ. of Tromsø, the Norwegian Institute for Nature Research, the Norwegian Directorate for  
4 Nature Management and SEAPOP program (<http://www.seapop.no>). The study in Svalbard was  
5 supported by the Norwegian Polar Institute and program MOSJ ([www.mosj.no](http://www.mosj.no)), and the eider  
6 geolocator study was supported by FRAM - High North Research Centre for Climate and the  
7 Environment. The Canadian and Norwegian Councils on Animal Care have approved this  
8 research.

## 10 **10. References**

- 12 Acevedo J, Garthe S, González A (2017) First sighting of a live hourglass dolphin  
13 (*Lagenorhynchus cruciger*) in inland waters of southern Chile. *Polar Biology* 40:483-486
- 14 Anker-Nilssen T, Bakken V, Strøm H, Golovkin AN, Bianki VV, Tatarinkova IP (2000) The  
15 status of marine birds breeding in the Barents Sea region
- 16 Barbraud C, Weimerskirch H, Guinet C, Jouventin P (2000) Effect of sea-ice extent on adult  
17 survival of an Antarctic top predator: the snow petrel *Pagodroma nivea*. *Oecologia*  
18 125:483-488
- 19 Bengtsson L, Hodges KI, Keenlyside N (2009) Will extratropical storms intensify in a warmer  
20 climate? *Journal of Climate* 22:2276-2301
- 21 Benton TG, Plaistow SJ, Coulson TN (2006) Complex population dynamics and complex  
22 causation: devils, details and demography. *Proc R Soc B* 273:1173-1181
- 23 Berge J, Johnsen G, Nilsen F, Gulliksen B, Slagstad D (2005) Ocean temperature oscillations  
24 enable reappearance of blue mussels *Mytilus edulis* in Svalbard after a 1000 year absence.
- 25 Boano G, Bricchetti P, Foschi U (2010) 'La Niña'-driven Atlantic storms affect winter survival of  
26 Mediterranean Cory's Shearwaters. *Italian Journal of Zoology* 77:460-468
- 27 Boje J (2002) Intermingling and seasonal migrations of Greenland halibut (*Reinhardtius*  
28 *hippoglossoides*) populations determined from tagging studies. *Fishery Bulletin* 100:414-  
29 422
- 30 Braby CE, Somero GN (2006) Following the heart: temperature and salinity effects on heart rate  
31 in native and invasive species of blue mussels (genus *Mytilus*). *J Exp Biol* 209:2554-2566
- 32 Brenko MH, Calabrese A (1969) The combined effects of salinity and temperature on larvae of  
33 the mussel *Mytilus edulis*. *Marine Biology* 4:224-226
- 34 Brown ED (2002) Life history, distribution, and size structure of Pacific capelin in Prince  
35 William Sound and the northern Gulf of Alaska. *ICES Journal of Marine Science* 59:983-  
36 996

- 1 Brown KM, Quinn JF (1988) The effect of wave action on growth in three species of intertidal  
2 gastropods. *Oecologia* 75:420-425
- 3 Burnham KP (1987) Design and analysis methods for fish survival experiments based on release-  
4 recapture. American Fisheries Society
- 5 Burnham KP, Anderson DR (2002) Model selection and multimodel inference: a practical  
6 information-theoretic approach. Springer Verlag
- 7 Bustnes J, Erikstad K (1988) The diets of sympatric wintering populations of Common Eider  
8 *Somateria mollissima* and King Eider *S. spectabilis* in Northern Norway. *Ornis Fennica*  
9 65:163-168
- 10 Bustnes J, Erikstad K (1993) Site fidelity in breeding common eider *Somateria mollissima*  
11 females. *Ornis Fennica* 70:11-16
- 12 Bustnes JO, Erikstad KE (1990) Size selection of common mussels, *Mytilus edulis*, by common  
13 eiders, *Somateria mollissima*: energy maximization or shell weight minimization? *Can J*  
14 *Zool* 68:2280-2283
- 15 Bustnes JO, Lønne OJ (1997) Habitat partitioning among sympatric wintering common eiders  
16 *Somateria mollissima* and king eiders *Somateria spectabilis*. *Ibis* 139:549-554
- 17 Buttler EI Avian cholera among arctic breeding common eiders *Somateria mollissima*: temporal  
18 dynamics and the role of handling stress in reproduction and survival. *Proc Masters*  
19 *Abstracts International*
- 20 Calenge C (2006) The package “adehabitat” for the R software: a tool for the analysis of space  
21 and habitat use by animals. *Ecological modelling* 197:516-519
- 22 Carrington E (2002) The ecomechanics of mussel attachment: from molecules to ecosystems.  
23 *Integrative and comparative biology* 42:846-852
- 24 Carrington E, Moeser GM, Dimond J, Mello JJ, Boller ML (2009) Seasonal disturbance to  
25 mussel beds: field test of a mechanistic model predicting wave dislodgment. *Limnology*  
26 and *Oceanography* 54:978-986
- 27 Catto J Objective identification of warm seclusion cyclones and their distribution. *Proc EGU*  
28 *General Assembly Conference Abstracts*
- 29 Chambers LE, Devney CA, Congdon BC, Dunlop N, Woehler EJ, Dann P (2011) Observed and  
30 predicted effects of climate on Australian seabirds. *Emu* 111:235-251
- 31 Choquet R, Lebreton JD, Gimenez O, Reboulet AM, Pradel R (2009a) U-CARE: Utilities for  
32 performing goodness of fit tests and manipulating CAPture-REcapture data. *Ecography*  
33 32:1071-1074
- 34 Choquet R, Rouan L, Pradel R (2009b) Program E-SURGE: a software application for fitting  
35 multievent models. *Modeling demographic processes in marked populations*:845-865
- 36 Cottam C (1939) Food habits of North American ducks. *Technical Bulletin* 643:1-129
- 37 Coulson T, Catchpole E, Albon S, Morgan B, Pemberton J, Clutton-Brock T, Crawley M,  
38 Grenfell B (2001) Age, sex, density, winter weather, and population crashes in Soay  
39 sheep. *Science* 292:1528-1531
- 40 Dee D, Balsameda M, Balsamo G, Engelen R, Simmons A, Thépaut J-N (2014) Toward a  
41 consistent reanalysis of the climate system. *Bulletin of the American Meteorological*  
42 *Society* 95:1235-1248
- 43 Dehnhard N, Ludynia K, Poisbleau M, Demongin L, Quillfeldt P (2013) Good days, bad days:  
44 wind as a driver of foraging success in a flightless seabird, the southern rockhopper  
45 penguin. *PloS one* 8:e79487

- 1 Descamps S, Gilchrist HG, Bêty J, Buttlar EI, Forbes MR (2009) Costs of reproduction in a  
2 long-lived bird: large clutch size is associated with low survival in the presence of a  
3 highly virulent disease. *Biol Letters* 5:278-281
- 4 Descamps S, Jenouvrier S, Gilchrist HG, Forbes MR (2012) Avian Cholera, a Threat to the  
5 Viability of an Arctic Seabird Colony? *PloS one* 7
- 6 Descamps S, Tarrow A, Lorentsen SH, Love OP, Varpe Ø, Yoccoz NG (2015) Large- scale  
7 oceanographic fluctuations drive Antarctic petrel survival and reproduction. *Ecography*
- 8 Descamps S, Yoccoz NG, Gaillard JM, Gilchrist HG, Erikstad KE, Hanssen SA, Cazelles B,  
9 Forbes MR, Bety J (2010) Detecting population heterogeneity in effects of North Atlantic  
10 Oscillations on seabird body condition: get into the rhythm. *Oikos* 119:1526-1536
- 11 Dunham AE, Erhart EM, Wright PC (2011) Global climate cycles and cyclones: consequences  
12 for rainfall patterns and lemur reproduction in southeastern Madagascar. *Global Change*  
13 *Biology* 17:219-227
- 14 Easterling MR, Ellner SP, Dixon PM (2000) Size-specific sensitivity: applying a new structured  
15 population model. *Ecology* 81:694-708
- 16 Ebeling A, Laur D, Rowley R (1985) Severe storm disturbances and reversal of community  
17 structure in a southern California kelp forest. *Marine Biology* 84:287-294
- 18 Eriksson MO (1985) Prey detectability for fish-eating birds in relation to fish density and water  
19 transparency. *Ornis Scandinavica*:1-7
- 20 Finney SK, Wanless S, Harris MP (1999) The effect of weather conditions on the feeding  
21 behaviour of a diving bird, the Common Guillemot *Uria aalge*. *Journal of Avian*  
22 *Biology*:23-30
- 23 Frederiksen M, Daunt F, Harris MP, Wanless S (2008) The demographic impact of extreme  
24 events: stochastic weather drives survival and population dynamics in a long- lived  
25 seabird. *Journal of Animal Ecology* 77:1020-1029
- 26 Frimer O (1994) The behaviour of moulting King Eiders *Somateria spectabilis*. *Wildfowl*  
27 45:176-187
- 28 Fujii M, Yamanaka Y (2008) Effects of storms on primary productivity and air-sea CO<sub>2</sub>  
29 exchange in the subarctic western North Pacific: a modeling study. *Biogeosciences*  
30 5:1189-1197
- 31 Gaillard JM, Yoccoz NG (2003) Temporal variation in survival of mammals: a case of  
32 environmental canalization? *Ecology* 84:3294-3306
- 33 Genovart M, Sanz- Aguilar A, Fernández- Chacón A, Igual JM, Pradel R, Forero MG, Oro D  
34 (2013) Contrasting effects of climatic variability on the demography of a trans- equatorial  
35 migratory seabird. *Journal of Animal Ecology* 82:121-130
- 36 Goudie R, Ankney C (1986) Body size, activity budgets, and diets of sea ducks wintering in  
37 Newfoundland. *Ecology* 67:1475-1482
- 38 Grosbois V, Gimenez O, Gaillard JM, Pradel R, Barbraud C, Clobert J, Møller A, Weimerskirch  
39 H (2008) Assessing the impact of climate variation on survival in vertebrate populations.  
40 *Biological Reviews* 83:357-399
- 41 Grosbois V, Thompson PM (2005) North Atlantic climate variation influences survival in adult  
42 fulmars. *Oikos* 109:273-290

- 1 Guéry L, Descamps S, Pradel R, Hanssen SA, Erikstad KE, Gabrielsen GW, Gilchrist HG, Bêty  
2 J (2017) Hidden survival heterogeneity of three Common eider populations in response to  
3 climate fluctuations. *Journal of Animal Ecology* 86:683-693
- 4 Guillemette M, Ydenberg RC, Himmelman JH (1992) The role of energy intake rate in prey and  
5 habitat selection of common eiders *Somateria mollissima* in winter: a risk-sensitive  
6 interpretation. *Journal of Animal Ecology*:599-610
- 7 Hanssen SA, Gabrielsen GW, Bustnes JO, Bråthen VS, Skottene E, Fenstad AA, Strøm H,  
8 Bakken V, Phillips RA, Moe B (2016) Migration strategies of common eiders from  
9 Svalbard: implications for bilateral conservation management. *Polar Biology* 39:2179-  
10 2188
- 11 Hario M, Mazerolle MJ, Saurola P (2009) Survival of female common eiders *Somateria m.*  
12 *mollissima* in a declining population of the northern Baltic Sea. *Oecologia* 159:747-756
- 13 Harris MP, Anker-Nilssen T, McCleery RH, Erikstad KE, Shaw DN, Grosbois V (2005) Effect  
14 of wintering area and climate on the survival of adult Atlantic puffins *Fratercula arctica*  
15 in the eastern Atlantic. *Marine Ecology Progress Series* 297
- 16 Hawkins P, Butler P, Woakes A, Speakman J (2000) Estimation of the rate of oxygen  
17 consumption of the common eider duck (*Somateria mollissima*), with some  
18 measurements of heart rate during voluntary dives. *J Exp Biol* 203:2819
- 19 Heath JP, Gilchrist HG (2010) When foraging becomes unprofitable: energetics of diving in tidal  
20 currents by common eiders wintering in the Arctic. *Marine Ecology Progress Series*  
21 403:279-290
- 22 Heath JP, Gilchrist HG, Ydenberg RC (2006) Regulation of stroke pattern and swim speed  
23 across a range of current velocities: diving by common eiders wintering in polynyas in  
24 the Canadian Arctic. *J Exp Biol* 209:3974-3983
- 25 Henkel LA (2006) Effect of water clarity on the distribution of marine birds in nearshore waters  
26 of Monterey Bay, California. *Journal of Field Ornithology* 77:151-156
- 27 Hodges KI (1994) A general method for tracking analysis and its application to meteorological  
28 data. *Monthly Weather Review* 122:2573-2586
- 29 Hoskins BJ, Hodges KI (2002) New perspectives on the Northern Hemisphere winter storm  
30 tracks. *Journal of the Atmospheric Sciences* 59:1041-1061
- 31 Howe JA, Austin WE, Forwick M, Paetzel M, Harland R, Cage AG (2010) Fjord systems and  
32 archives: a review. *Geological Society, London, Special Publications* 344:5-15
- 33 Høyvik Hilde C, Pélabon C, Guéry L, Gabrielsen GW, Descamps S (2016) Mind the wind:  
34 microclimate effects on incubation effort of an arctic seabird. *Ecology and evolution*  
35 6:1914-1921
- 36 Hurrell JW, Kushnir Y, Ottersen G, Visbeck M (2003) An overview of the North Atlantic  
37 oscillation. *Wiley Online Library*
- 38 Jenouvrier S (2013) Impacts of climate change on avian populations. *Global Change Biology*  
39 19:2036-2057
- 40 Jenouvrier S, Caswell H, Barbraud C, Holland M, Strøve J, Weimerskirch H (2009)  
41 Demographic models and IPCC climate projections predict the decline of an emperor  
42 penguin population. *Proceedings of the National Academy of Sciences* 106:1844
- 43 Jenouvrier S, Péron C, Weimerskirch H (2015) Extreme climate events and individual  
44 heterogeneity shape life- history traits and population dynamics. *Ecological Monographs*  
45 85:605-624

- 1 Jones SC, Harr PA, Abraham J, Bosart LF, Bowyer PJ, Evans JL, Hanley DE, Hanstrum BN,  
2 Hart RE, Lalaurette F (2003) The extratropical transition of tropical cyclones: Forecast  
3 challenges, current understanding, and future directions. *Weather and Forecasting*  
4 18:1052-1092
- 5 Kendall BE, Fox GA, Fujiwara M, Nogeire TM (2011) Demographic heterogeneity, cohort  
6 selection, and population growth. *Ecology* 92:1985-1993
- 7 Lopes PdC (1979) Eggs and larvae of *Mauroliticus muelleri* (Gonostomatidae) and other fish eggs  
8 and larvae from two fjords in western Norway. *Sarsia* 64:199-210
- 9 Madsen FJ (1954) On the food habits of the diving ducks in Denmark
- 10 Menge BA, Chan F, Lubchenco J (2008) Response of a rocky intertidal ecosystem engineer and  
11 community dominant to climate change. *Ecology Letters* 11:151-162
- 12 Merkel FR, Jamieson SE, Falk K, Mosbech A (2007) The diet of common eiders wintering in  
13 Nuuk, Southwest Greenland. *Polar Biology* 30:227-234
- 14 Mosbech A, Gilchrist G, Merkel F, Sonne C, Flagstad A, Nyegaard H (2006) Year-round  
15 movements of Northern Common Eiders *Somateria mollissima borealis* breeding in  
16 Arctic Canada and West Greenland followed by satellite telemetry. *Ardea* 94:651-665
- 17 Pawlik JR, Butman CA (1993) Settlement of a marine tube worm as a function of current  
18 velocity: Interacting effects of hydrodynamics and behavior I. *Limnology and*  
19 *Oceanography* 38:1730-1740
- 20 Pike DA, Stiner JC (2007) Sea turtle species vary in their susceptibility to tropical cyclones.  
21 *Oecologia* 153:471-478
- 22 Ravn Merkel F, Mosbech A, Boertmann D, Grøndahl L (2002) Winter seabird distribution and  
23 abundance off south-western Greenland, 1999. *Polar Research* 21:17-36
- 24 Reusch TBH, Chapman ARO (1995) Storm effects on eelgrass (*Zostera marina* L.) and blue  
25 mussel (*Mytilus edulis* L.) beds. *Journal of experimental marine biology and ecology*  
26 192:257-271
- 27 Richardson LL, LeDrew EF (2006) Remote sensing of aquatic coastal ecosystem processes.  
28 Springer
- 29 Rind D, Goldberg R, Ruedy R (1989) Change in climate variability in the 21st century. *Climatic*  
30 *change* 14:5-37
- 31 Roberts J, Champion A, Dawkins L, Hodges K, Shaffrey L, Stephenson D, Stringer M, Thornton  
32 H, Youngman B (2014) The XWS open access catalogue of extreme European  
33 windstorms from 1979 to 2012.
- 34 Sæther BE, Tufto J, Engen S, Jerstad K, Røstad O, Skåtan J (2000) Population dynamical  
35 consequences of climate change for a small temperate songbird. *Science* 287:854
- 36 Sandvik H, Erikstad KE, Barrett RT, Yoccoz NG (2005) The effect of climate on adult survival  
37 in five species of North Atlantic seabirds. *Journal of Animal Ecology* 74:817-831
- 38 Sanino GP, Van Waerebeek K (2008) A note on the southern distribution range of inshore and  
39 offshore common bottlenose dolphins *Tursiops truncatus* in the Southeast Pacific. Final  
40 report. IWC SC/60/SM18
- 41 Sarafanov A (2009) On the effect of the North Atlantic Oscillation on temperature and salinity of  
42 the subpolar North Atlantic intermediate and deep waters. *ICES Journal of Marine*  
43 *Science: Journal du Conseil* 66:1448-1454
- 44 Sorteberg A, Kvamstø NG, Byrkjedal Ø (2005) Wintertime nordic seas cyclone variability and  
45 its impact on oceanic volume transports into the Nordic Seas. *The Nordic Seas: An*  
46 *integrated Perspective*:137-156

- 1 Sprung M (1984) Physiological energetics of mussel larvae(*Mytilus edulis*). I. Shell growth and  
2 biomass. Marine ecology progress series Oldendorf 17:283-293
- 3 Stenseth NC, Mysterud A (2005) Weather packages: finding the right scale and composition of  
4 climate in ecology. Journal of Animal Ecology 74:1195-1198
- 5 Sukhotin A, Abele D, Pörtner H-O (2006) Ageing and metabolism of *Mytilus edulis*: populations  
6 from various climate regimes. Journal of Shellfish Research 25:893-899
- 7 Swennen C (1989) Gull predation upon eider *Somateria mollissima* ducklings: Destruction or  
8 elimination of the unfit? Ardea 77:21-45
- 9 Systad GH, Bustnes JO, Erikstad KE (2000) Behavioral responses to decreasing day length in  
10 wintering sea ducks. Auk 117:33-40
- 11 Thomsen MS, Wernberg T, Kendrick GA (2004) The effect of thallus size, life stage,  
12 aggregation, wave exposure and substratum conditions on the forces required to break or  
13 dislodge the small kelp *Ecklonia radiata*. Botanica Marina 47:454-460
- 14 Ulbrich U, Leckebusch G, Pinto JG (2009) Extra-tropical cyclones in the present and future  
15 climate: a review. Theoretical and Applied Climatology 96:117-131
- 16 Ummenhofer CC, Meehl GA (2017) Extreme weather and climate events with ecological  
17 relevance: a review. Phil Trans R Soc B 372:20160135
- 18 Vaitkus G, Bubinas A (2001) Modelling of sea duck spatial distribution in relation to food  
19 resources in Lithuanian offshore waters under the gradient of winter climatic conditions.  
20 Acta Zoologica Lituanica 11:288-302
- 21 van de Pol M, Jenouvrier S, Cornelissen JH, Visser ME (2017) Behavioural, ecological and  
22 evolutionary responses to extreme climatic events: challenges and directions. The Royal  
23 Society
- 24 Varennes E, Hanssen SA, Bonardelli JC, Guillemette M (2015) A large molluscivore bird  
25 (Common Eider, *Somateria mollissima*) is able to discriminate quality of blue mussels  
26 (*Mytilus edulis*) based on size and provenance. Can J Zool 93:655-663
- 27 Visbeck M, Chassignet EP, Curry RG, Delworth TL, Dickson RR, Krahnemann G (2003) The  
28 ocean's response to North Atlantic Oscillation variability. The North Atlantic Oscillation:  
29 climatic significance and environmental impact:113-145
- 30 Wakeley JS, Mendall HL (1976) Migrational Homing and Survival of Adult Female Elders in  
31 Maine. The Journal of Wildlife Management:15-21
- 32 Wang XL, Feng Y, Compo G, Swail V, Zwiers F, Allan R, Sardeshmukh P (2013) Trends and  
33 low frequency variability of extra-tropical cyclone activity in the ensemble of twentieth  
34 century reanalysis. Climate Dynamics 40:2775-2800
- 35 Zammuto RM (1986) Life histories of birds: clutch size, longevity, and body mass among North  
36 American game birds. Can J Zool 64:2739-2749

37

38

39



# 1 11. Tables

2 **Table 1: Descriptive statistics of winter (December-March) extratropical cyclones (ETC) activity variables (mean  $\pm$  SE**  
 3 **(min-max)) on each wintering ground from 1996-2014 for Greenland and Atlantic Canada, 1999-2014 for Iceland and**  
 4 **northern Norway zone 1 and 1985-2014 for northern Norway zone 2. The two variables for the mean ETC activity are the**  
 5 **total number of ETCs (Number of ETCs) and the mean of their wind speed (Mean wind) within the overlap region. The**  
 6 **four other variables measure the number of extreme ETCs, i.e. with wind speed above the 95th percentile threshold of the**  
 7 **local wind speed distribution at least once in the overlap region, the number of days of extreme ETC (Extreme ETCs**  
 8 **(days per winter)), the duration of the longest ETC and the maximum wind speed of the strongest ETC (Max wind) all**  
 9 **relative to the overlap. “95<sup>th</sup> percentile” is the 95th percentile threshold of local wind speed distribution ( $\text{m s}^{-1}$ ). Wind**  
 10 **speeds are at a 10-m height.**

	Greenland	Atlantic Canada	Iceland	northern Norway zone 1	northern Norway zone 2
Number of ETCs	45.55 $\pm$ 2.01 (29-62)	69.33 $\pm$ 1.40 (56-79)	53.27 $\pm$ 3.11 (29-72)	32.87 $\pm$ 1.74 (25-50)	33.79 $\pm$ 1.49 (20-54)
Mean wind ( $\text{m s}^{-1}$ )	11.64 $\pm$ 0.22 (9.97-13.68)	12.77 $\pm$ 0.13 (11.74-14.22)	14.14 $\pm$ 0.14 (13.18-15.16)	9.35 $\pm$ 0.19 (8.09-10.20)	9.63 $\pm$ 0.20 (8.09-12.92)
Number of extreme ETCs	1.78 $\pm$ 0.37 (0-6)	1.78 $\pm$ 0.37 (0-6)	2.27 $\pm$ 0.34 (1-5)	1.33 $\pm$ 0.27 (0-3)	1.79 $\pm$ 0.35 (0-9)
Duration extreme ETCs (days per winter)	0.44 $\pm$ 0.08 (0-1.12)	0.74 $\pm$ 0.13 (0-2.63)	0.5 $\pm$ 0.09 (0.12-1.37)	0.25 $\pm$ 0.06 (0-0.62)	0.44 $\pm$ 0.12 (0-3.25)
Longest ETC (days per winter)	3.67 $\pm$ 0.20 (2.75-5.87)	3.67 $\pm$ 0.17 (2.5-4.62)	4.05 $\pm$ 0.25 (3-6.5)	1.77 $\pm$ 0.20 (0.37-3.25)	2.20 $\pm$ 0.32 (0.12-7.25)
Max wind ( $\text{m s}^{-1}$ )	24.87 $\pm$ 0.37 (21.74-27.61)	25.74 $\pm$ 0.52 (22.27-29.15)	28.68 $\pm$ 0.58 (25.54-32.67)	22.77 $\pm$ 0.70 (18.82-29.26)	22.51 $\pm$ 0.52 (17.68-29.26)
95 <sup>th</sup> percentile ( $\text{m s}^{-1}$ )	23.30	22.60	25.30	21.68	20.95

11  
12  
13

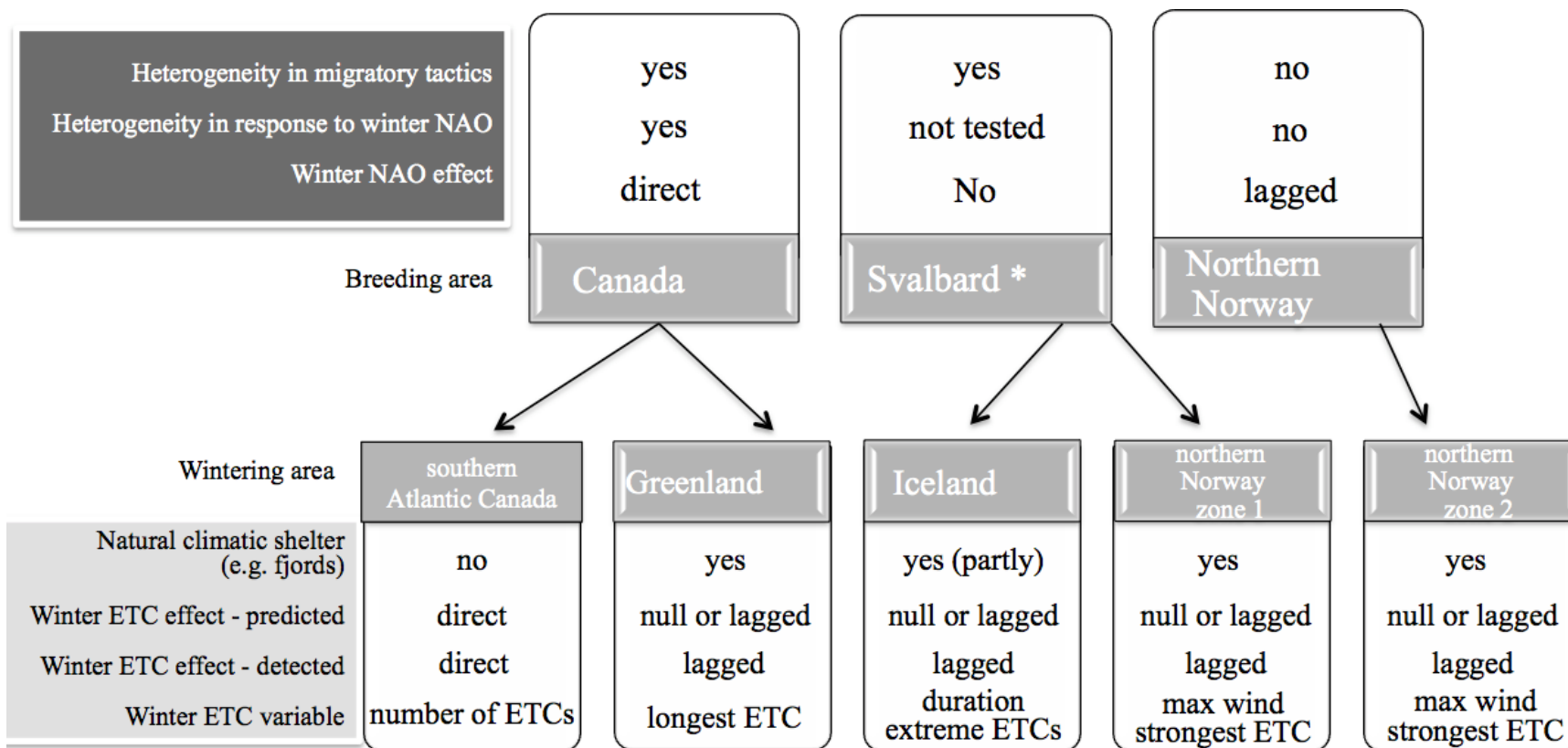
14 **Table 2: Effect of winter extratropical cyclones (ETC) activity with or without time lag of one (L1) or two (L2) years on**  
 15 **female adult survival of common eider breeding in Canada (1996-2014), in Svalbard (1999-2014) and in northern Norway**  
 16 **(1985-2014). Results of analysis of deviance (ANODEV) are presented for the first ten models. Variables from each**  
 17 **wintering area (G for western Greenland, sAC for southern Atlantic Canada, I for Iceland, No for northern Norway zone**  
 18 **1 and nNo for northern Norway zone 2) were tested either on each class separately (In the Canadian population: 1 stands**  
 19 **for the group H1 wintering potentially in Greenland and 2 for the group H2 potentially in sAC), on both in interaction (h)**  
 20 **or without heterogeneity.**

Survival	Deviance	Criterion	$\Delta$ Criterion	$F_{j-1, n-j}$	p	$R_{Dev}^2$
Canadian population		QAIC	$\Delta$ QAIC			
<b>1<sub>time</sub> 2<sub>Number of ETCs of sAC</sub></b>	<b>22511.14</b>	<b>8126.30</b>	<b>0.00</b>	<b>8.48</b>	<b>0.010</b>	<b>0.35</b>
1 <sub>time</sub> 2 <sub>constant</sub>	22525.55	8129.45	3.15	-	-	-
1 <sub>time</sub> 2 <sub>NAO</sub>	22521.81	8130.12	3.81	1.58	0.227	0.09
Time (no heterogeneity)	22578.08	8146.23	19.92	-	-	-
h*time	22483.95	8146.58	20.28	-	-	-
<b>1<sub>Longest ETC_L2 of G</sub> 2<sub>Number of ETCs of sAC</sub></b>	<b>22657.95</b>	<b>8146.89</b>	<b>20.47</b>	<b>8.19</b>	<b>&lt;0.0001</b>	<b>0.43</b>
<b>1<sub>Longest ETC_L2 of G</sub> 2<sub>constant</sub></b>	<b>22688.83</b>	<b>8155.92</b>	<b>29.51</b>	<b>10.07</b>	<b>0.006</b>	<b>0.39</b>
<b>1<sub>Duration extreme ETCs_L2 of G</sub> 2<sub>constant</sub></b>	<b>22696.39</b>	<b>8158.52</b>	<b>32.21</b>	<b>8.92</b>	<b>0.009</b>	<b>0.36</b>
<b>1<sub>Number of extreme ETCs_L2 of G</sub> 2<sub>constant</sub></b>	<b>22700.09</b>	<b>8159.84</b>	<b>33.54</b>	<b>8.39</b>	<b>0.011</b>	<b>0.34</b>
<b>1<sub>Number of ETCs_L2 of G</sub> 2<sub>constant</sub></b>	<b>22710.50</b>	<b>8163.56</b>	<b>37.26</b>	<b>7.02</b>	<b>0.018</b>	<b>0.31</b>
Svalbard population		AICc	$\Delta$ AICc			
<b>Max wind_L2 of No</b>	<b>1952.24</b>	<b>1986.99</b>	<b>0.00</b>	<b>5.48</b>	<b>0.036</b>	<b>0.30</b>
<b>Duration extreme ETCs_L2 of I</b>	<b>1952.69</b>	<b>1987.44</b>	<b>0.45</b>	<b>5.08</b>	<b>0.042</b>	<b>0.28</b>
Time	1932.26	1988.14	1.14	-	-	-
Number of ETCs of No	1954.02	1988.77	1.78	3.97	0.068	0.23
Number of ETCs_L1 of No	1954.15	1988.90	1.91	3.87	0.071	0.23
NAO	1954.24	1988.99	2.00	3.80	0.073	0.23
Mean wind_L1 of I	1955.53	1990.28	3.29	2.87	0.114	0.18
Mean wind of No	1956.30	1991.05	4.06	2.36	0.148	0.15
Number of ETCs_L1 of No	1957.20	1991.95	4.95	1.81	0.202	0.12
Constant	1960.67	1993.28	6.28	-	-	-
Norwegian population		QAICc	$\Delta$ QAICc			
<b>NAO_L2+MaxWind_L1 of nNo</b>	<b>8471.13</b>	<b>5882.87</b>	<b>0.00</b>	<b>14.86</b>	<b>&lt;0.0001</b>	<b>0.53</b>
<b>NAO_L2+MaxWind_L2 of nNo</b>	<b>8473.73</b>	<b>5884.65</b>	<b>1.78</b>	<b>13.68</b>	<b>&lt;0.0001</b>	<b>0.51</b>
Time	8412.23	5896.07	13.20	-	-	-
<b>NAO_L2</b>	<b>8498.12</b>	<b>5899.34</b>	<b>16.48</b>	<b>12.68</b>	<b>0.001</b>	<b>0.32</b>
<b>Max wind_L1 of nNo</b>	<b>8510.29</b>	<b>5907.70</b>	<b>24.83</b>	<b>7.76</b>	<b>0.010</b>	<b>0.22</b>
<b>h* Max wind_L1 of nNo</b>	<b>8509.98</b>	<b>5911.57</b>	<b>28.71</b>	<b>4.17</b>	<b>0.010</b>	<b>0.19</b>
<b>Max wind_L2 of nNo</b>	<b>8517.54</b>	<b>5912.67</b>	<b>29.81</b>	<b>5.36</b>	<b>0.028</b>	<b>0.17</b>
<b>h* Max wind_L2 of nNo</b>	<b>8515.84</b>	<b>5915.60</b>	<b>32.73</b>	<b>3.14</b>	<b>0.033</b>	<b>0.15</b>
NAO_L1	8525.57	5918.18	35.32	3.07	0.091	0.10
Constant	8538.47	5924.99	42.13	-	-	-

21 Significant ANODEV results are in bold. n is the number of survival estimates obtained from model Ft (fixed effect model with a time  
 22 effect, see formula above), j the number of parameters required to describe the relationship between survival and the focal climatic  
 23 covariate,  $F_{j-1, n-j}$  the ANODEV test statistic following a Fisher-Snedecor distribution with j-1 and n-j degrees of freedom, p the p-value of  
 24 the ANODEV test and  $R_{Dev}^2$  the proportion of survival variation explained by the covariate (see Grosbois *et al.* 2008 for more details).

25 **12. Figures**

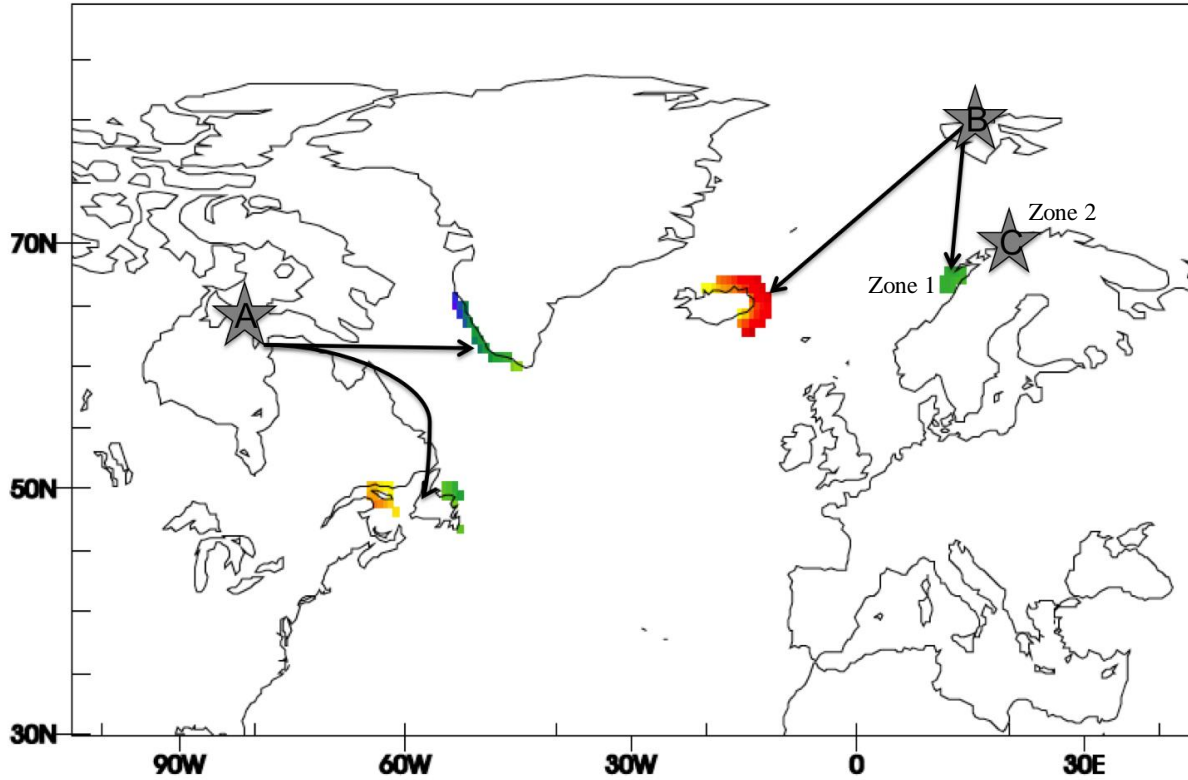
26



27

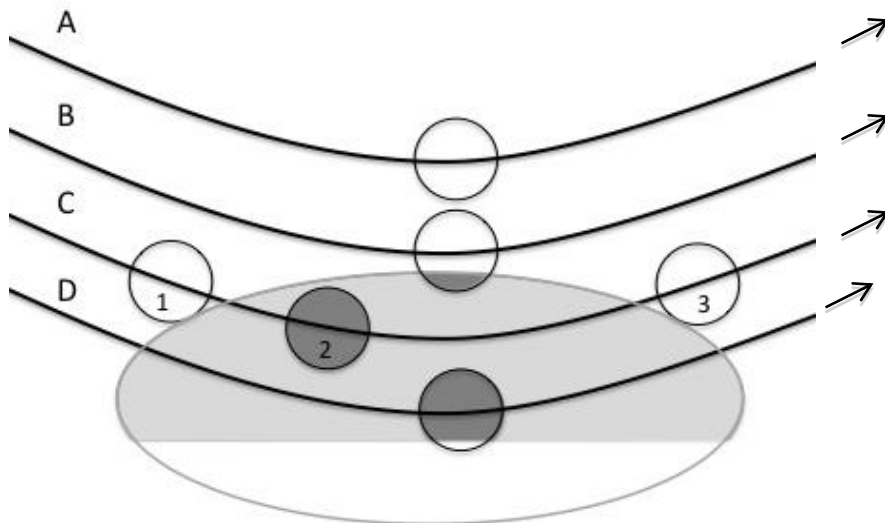
28 **Figure 1: Summary diagram of winter North Atlantic Oscillation (NAO) effect (dark grey box; Guéry *et al.* 2017) and local winter extratropical cyclones (ETC) effect**  
 29 **(light grey box) on female eider survival depending on their breeding population and wintering areas. For the Svalbard population, relations between survival and**  
 30 **winter variables were given for the whole population (individual heterogeneity was not tested, see methods).**

31



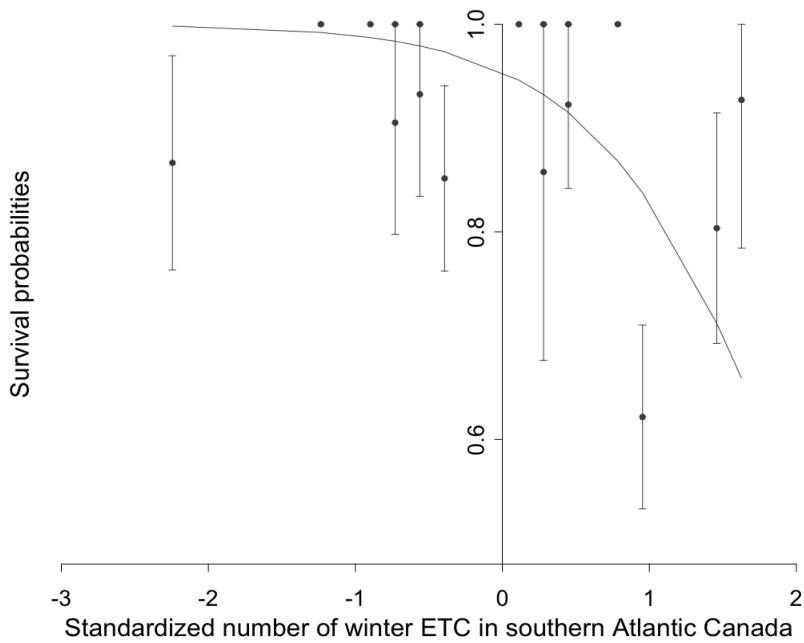
32  
33  
34  
35  
36

Figure 2: Grid cells used as winter (December to March) distribution (home range Kernel core, see methods) of female common eiders breeding in Canada (A) and wintering either in west Greenland or in southern Atlantic Canada, breeding in Svalbard (B) and wintering in Iceland and northern Norway (zone 1). Resident eiders breeding near Tromsø (C) wintered in the vicinity of the island (zone 2).



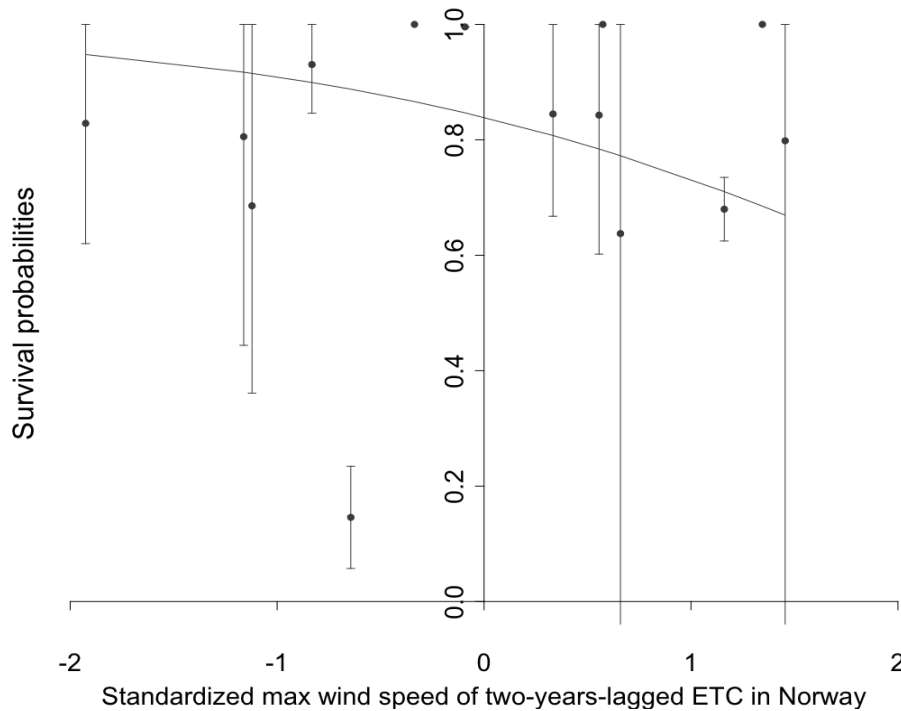
37  
38  
39  
40  
41  
42  
43

Figure 3: Schematic of winter extratropical cyclones (ETC) variables extraction. Black lines (A, B, C and D) are examples of ETC tracks. The light grey ellipse is an example of eider wintering area with the land part masked in white. Black circles are ETC buffer regions, i.e. a 6-degree geodesic radius cap centred on the ETCs, at different time (e.g. time “1” to “3” for the ETC track “C”). Parts in dark grey represent the ETC regions overlapping with the wintering area used to extract the winter ETC variables. For example, ETC corresponding to track B would be included in the number of ETC and if the numbers 1 to 3 referred to days, the duration of the ETC corresponding to track C is one day.



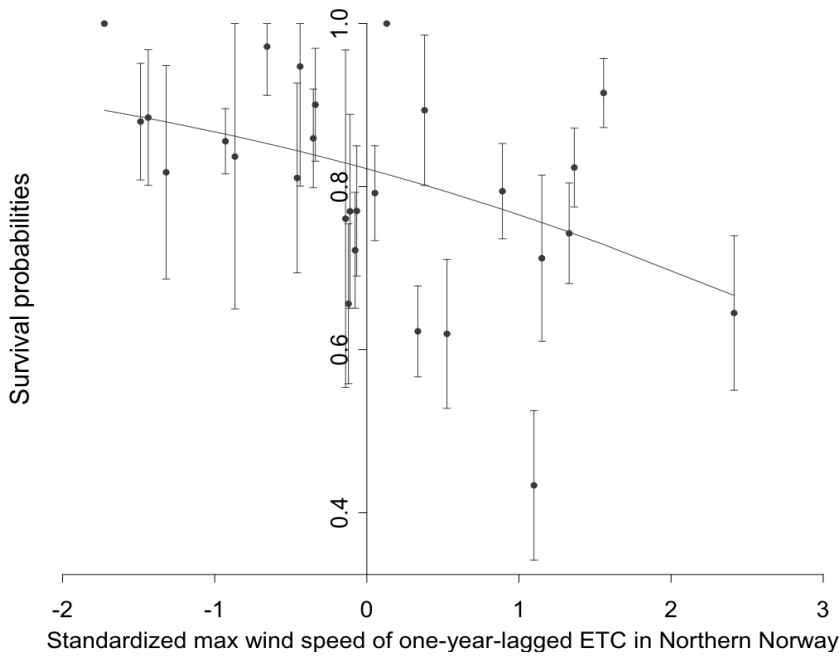
44

45 **Figure 4: Influence of the number of winter extratropical cyclones (ETC) without time lag in southern Atlantic Canada**  
 46 **(x- axis) on adult survival estimates ( $\pm$ SE; y-axis) of female eiders from group H2 and breeding in the Canadian Arctic.**  
 47 **Isolated points represent survival estimates from the time dependent model with heterogeneity (model h\*time; Table 2).**  
 48 **The line represents predicted survival estimates constraint by the number of winter ETCs in southern Atlantic Canada**  
 49 **(model with heterogeneity 1<sub>time</sub> 2<sub>Number of ETCs of SAC</sub>; Table 2).**



50

51 **Figure 5: Influence of the maximum (max) wind speed of winter extratropical cyclones (ETC) with a two-years lag (L2) in**  
 52 **Norway zone 1 (No; x- axis) on adult survival estimates ( $\pm$ SE; y-axis) of females eiders breeding in Svalbard. Isolated**  
 53 **points represent survival estimates from the time dependent model with heterogeneity (model Time; Table 2). The line**  
 54 **represents predicted survival estimates from the model with survival constraint with the maximum wind speed of the**  
 55 **strongest ETCs with a two-year lag (Max wind\_L2 of No; Table 2).**



57

58 **Figure 6: Influence of the maximum (max) wind speed of the strongest winter extratropical cyclones (ETC) with a one-**  
 59 **year lag in northern Norway zone 2 (x- axis) on adult survival estimates ( $\pm$ SE; y-axis) of female eiders breeding and**  
 60 **wintering in northern Norway. Isolated points represent survival estimates from the time dependent model (model time;**  
 61 **Table 2). The line represents predicted survival estimates from the model ( $\phi$ (MaxWind\_L1\_nNo); Table 2) with survival**  
 62 **constraint by the covariate.**

63

### 64 13. Supporting Information captions:

65 Table S1: Goodness-of-fit (GOF) tests results for the standard time-dependent Cormack-Jolly-Seber  
 66 model (CJS-model) and the time-dependent model with individual heterogeneity of detection (IDH-  
 67 model) for common eider breeding in Norway (1985-2014), Canada (1996-2014) and Svalbard (1999-  
 68 2014).

69 Table S2: Effect of the maximum wind speed of the strongest winter extratropical cyclones with or  
 70 without time lag of one (L1) or two (L2) years on female adult survival of common eider breeding in  
 71 northern Norway (1985-2014). Results of analysis of deviance (ANODEV) are presented for the four  
 72 width-length combinations.

73 Figure S1 to S9: Correlations between winter NAO and local winter ETCs-related variables with or  
 74 without time lags in each wintering areas (Greenland (G), southern Atlantic Canada (sAC), Iceland (I),  
 75 northern Norway zone 1 (No) and northern Norway zone 2 (Nno)) for the three populations breeding  
 76 either in Canada (1996-2014), in Svalbard (1999-2014) or in northern Norway (1985-2014).

77

