

Effect of simulated gastrointestinal digestion and fermentation on polyphenolic content and bioactivity of brown seaweed phlorotannin-rich extracts

Article

Accepted Version

Corona, G., Coman, M. M., Guo, Y., Hotchkiss, S., Gill, C., Yaqoob, P., Spencer, J. P. E. and Rowland, I. (2017) Effect of simulated gastrointestinal digestion and fermentation on polyphenolic content and bioactivity of brown seaweed phlorotannin-rich extracts. *Molecular Nutrition and Food Research*, 61 (11). 1700223. ISSN 1613-4133 doi: <https://doi.org/10.1002/mnfr.201700223> Available at <https://centaur.reading.ac.uk/71528/>

It is advisable to refer to the publisher's version if you intend to cite from the work. See [Guidance on citing](#).

To link to this article DOI: <http://dx.doi.org/10.1002/mnfr.201700223>

Publisher: Wiley

All outputs in CentAUR are protected by Intellectual Property Rights law, including copyright law. Copyright and IPR is retained by the creators or other copyright holders. Terms and conditions for use of this material are defined in the [End User Agreement](#).

www.reading.ac.uk/centaur

CentAUR

Central Archive at the University of Reading

Reading's research outputs online

Effect of simulated gastrointestinal digestion and fermentation on polyphenolic content and bioactivity of brown seaweed phlorotannin-rich extracts.

Giulia Corona^{1,2,*}, Maria Magdalena Coman^{2,3}, Yuxuan Guo², Sarah Hotchkiss⁴, Chris Gill⁵, Parveen Yaqoob², Jeremy P.E. Spencer² and Ian Rowland²

¹*Health Sciences Research Centre, University of Roehampton, London SW15 4JD, UK*

²*Department of Food and Nutritional Sciences, University of Reading, Reading, RG6 6AP, UK*

³*School of Biosciences and Veterinary Medicine, University of Camerino, Camerino (MC), Italy*

⁴*CyberColloids Ltd. Carrigaline Industrial Estate, Carrigaline, County Cork, Ireland*

⁵*Northern Ireland Centre for Food & Health, University of Ulster, Coleraine, BT52 1AA*

***Corresponding author:** Dr. Giulia Corona, Health Science Research Centre, Life Sciences Department, Whitelands College, University of Roehampton, Holybourne Avenue, London, SW15 4JD . e-mail: giulia.corona@roehampton.ac.uk
Tel: +44 (0)20 8392 3622, fax +44 -(0)208392 3610,

List of abbreviations: CF, colonic fermentation; GID, gastrointestinal digestion; HMW, high molecular weight; LMW, low molecular weight; ND, non-digested; SPE, seaweed polyphenol extract; TP, total polyphenol;

Keywords: Digestion, Fermentation, Polyphenols, Phlorotannins, Seaweeds,

Received: 05-03-2017; Revised: 30-06-2017; Accepted: 04-07-2017

This article has been accepted for publication and undergone full peer review but has not been through the copyediting, typesetting, pagination and proofreading process, which may lead to differences between this version and the [Version of Record](#). Please cite this article as [doi: 10.1002/mnfr.201700223](https://doi.org/10.1002/mnfr.201700223).

This article is protected by copyright. All rights reserved.

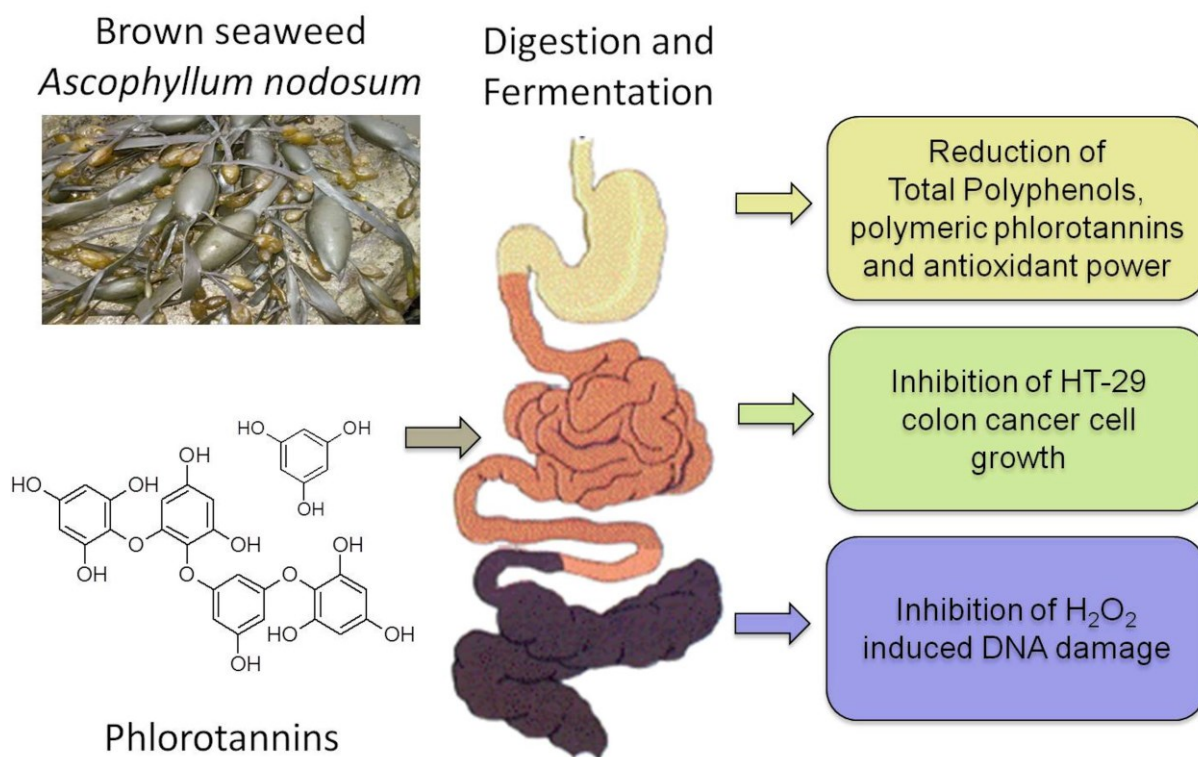
Abstract

Scope: Unlike other classes of polyphenols, there is a lack of knowledge regarding brown seaweed phlorotannins and their bioactivity. We investigated the impact of *in vitro* gastrointestinal digestion and colonic fermentation on the bioactivity of a seaweed phlorotannin extract from *Ascophyllum nodosum* and its high molecular weight (HMW) and low molecular weight (LMW) fractions.

Methods and Results: The highest phlorotannin and total polyphenol (TP) concentration was observed in the HMW fraction. Antioxidant capacity broadly followed phlorotannin and TP levels, with HMW having the highest activity. Both gastrointestinal digestion (GID) and colonic fermentation (CF) significantly affected phlorotannin and TP levels, and antioxidant capacity of the extract and fractions. Despite this, in HT-29 cells, all GID extracts significantly inhibit cell growth, whereas CF extracts effectively counteracted H₂O₂ induced DNA damage.

Conclusion: Although phlorotannins, TP levels and antioxidant power of the extracts were strongly reduced after *in vitro* digestion and fermentation, their anti-genotoxic activity and cell growth inhibitory effect in colon HT-29 cells was maintained and enhanced. HMW was the most effective fraction, indicating that the high molecular weight phlorotannins potentially exert a stronger beneficial effect in the colon.

This study examines the impact of in vitro gastrointestinal digestion and colonic fermentation on the stability and bioactivity of a seaweed phlorotannins. An ethanolic extract from *Ascophyllum nodosum* rich in phlorotannins, and its high molecular weight (HMW) and low molecular weight (LMW) fractions were utilized. Both gastrointestinal digestion (GID) and colonic fermentation (CF) significantly affected polymeric phlorotannins, total polyphenol levels, and antioxidant activity of the extract and fractions. Despite this, the anti-genotoxic activity and cell growth inhibitory effect of the extracts in colon HT-29 cells was maintained and enhanced. HMW was the most effective fraction, indicating that the high molecular weight phlorotannins potentially exert a stronger beneficial effect in the colon.



Introduction

Seaweeds have been traditionally consumed for centuries in coastal regions of Asian countries [1], and more recently European countries including Ireland have shown a renewed interest in seaweeds that were once a traditional part of the diet [2-5]. The gastronomic use of seaweeds has expanded into the European cuisine, and various species of edible seaweeds are now increasingly used worldwide as a source of components with potential industrial applications [6-8].

Seaweeds are a rich source of a range of bioactive compounds [9-11], including polyphenolic compounds [12]. Polyphenols found in algae [13, 14] show some similarities to those present in land plants [13-15]. Brown seaweeds contain a characteristic class of compounds called phlorotannins [16-19], which are only found in brown seaweeds [20]. and can account for 5 to 15 % of the plant dried weight [15]. They are oligomers and polymers of phloroglucinol units, and their molecular weight can vary greatly, from 126 Da to 650KDa [12, 19]. Phlorotannins are being increasingly investigated for their vast array of bioactivities [14, 21, 22] such as antioxidant [23-27], anti-inflammatory [24, 28, 29], antibacterial [30], anticancer [31-35], and antidiabetic [31, 36, 37], showing promising potential to develop seaweed-derived products rich in bioactive components with commercial potential for food and pharma applications [38, 39]. However the gastrointestinal tract may largely impact the structure of phlorotannins during digestion and this can have an impact on their bioactivity [40, 41]. The ability of phlorotannins to act as effective bioactive molecules *in vivo* will be dependent on the degree of their biotransformation and conjugation during absorption from the gastrointestinal (GI) tract, in the liver and finally in cells [40, 42]. In view of this, the way phlorotannins are modified and metabolised during gastrointestinal digestion and colonic fermentation, needs to be considered, because

it will affect their bioactivity [43]. We have recently shown that after consumption of a phlorotannin-rich capsule a range of oligomeric metabolites appear in plasma and are excreted in urine, and the data suggest that extensive gastrointestinal modifications occur prior to absorption [42]. In the present study, the *in vitro* digestion/fermentation and their impact on antioxidant and anti-genotoxic activity of extracts from *Ascophyllum nodosum* (a common brown alga in British Isles) was investigated. An ethanol-based seaweed polyphenol extract (SPE) and its High Molecular Weight (HMW) fraction and Low Molecular Weight (LMW) fraction were produced from the seaweed and were digested (GID) *in vitro* to mimic the condition of the human gastrointestinal tract [44, 45] and fermented (CF) by using a pH-controlled, stirred, batch-culture system reflective of the distal region of the human large intestine [46]. We have assessed the impact of digestion and fermentation on the *in vitro* antioxidant capacity, and anti-genotoxic potential of the extracts in HT-29 cells.

Materials and methods

Seaweed material. Fresh *Ascophyllum nodosum* was supplied by The Hebridean Seaweed Company, Isle of Lewis, Scotland in March 2011. The seaweed biomass was harvested by hand to ensure quality, cleaned of any contaminating sand and fouling organisms and then shipped refrigerated to a processing facility in France where it was immediately chopped and frozen.

Preparation of seaweed extracts. A novel seaweed polyphenol extract (SPE) from *Ascophyllum nodosum* was produced by CEVA (France) using a proprietary solvent based extraction system that was specifically adapted for use with fresh or frozen

Ascophyllum nodosum. The extraction step was carried out at room temperature overnight, using an ethanol/water (60/40) solvent mix and 400kg of defrosted seaweed. Post extraction, insoluble material (>100µm) was removed through a series of filtration steps followed by ethanol removal and concentration using a vacuum evaporator. Approximately half of the produced extract was then fractionated using tangential flow ultra-filtration to produce two further extracts of high molecular weight (HMW, >10KDa) and low molecular weight (LMW, 1-10KDa) range, and with varying polyphenol content. The phlorotannins in the extract and fractions were characterized by NP-HPLC analysis. Total polyphenols were quantified using the Folin-Ciocalteu method as equivalents of phloroglucinol units.

Simulated Gastro-Intestinal Digestion: The procedure was adapted from Mills et al. and McDougall et al. [44, 45] and conducted as previously described [42]. This method consists of two sequential stages: gastric digestion and small intestinal digestion with a dialysis step. Seaweed extracts and fractions (SPE, HMW, LMW) were dissolved (10g in 30 ml acidified water pH=2) and pepsin (320 U/ml) was added. Samples were incubated at 37 °C for 2 h on a shaker covered with foil to exclude light. The pH was adjusted to 7.5 by adding few drops of 6M NaOH, and pancreatin (4 mg/ml) and bile extracts (25 mg/ml) were added. The samples were incubated at 37 °C for 2 h on a shaker, transferred into the dialysis tubing (100-500 Da, cut-off, 1.8 ml/cm, Spectra/Por, Biotech) and dialysed overnight at 4 °C against water (4 L) to remove low molecular weight digested materials. The dialysis fluid was changed and dialysis continued for additional 2 h. Digested samples (GID) were freeze-dried and stored at -20 °C. Aliquots of digested and dialyzed extracts were used in the subsequent *in vitro* assays and cell culture treatments.

Colonic Fermentation (Batch Culture): An aliquot of the digested extracts (GID) was subjected to *in vitro* colonic fermentation procedure, using the previously described method [42]. Batch-culture fermentation vessels (300 ml; one vessel per treatment) were autoclaved and filled with 135 ml sterilized basal medium. Medium was stirred and gassed overnight with O₂-free N₂. Before addition of the digested extracts (equivalent to 1.5 g of undigested extracts), the temperature inside the vessels was set to 37 °C by a circulating water bath and the pH was controlled at 6.8 by an electrolab pH controller, in order to mimic conditions in the distal region of the human large intestine (anaerobic; 37 °C; pH 6.8). Vessels were inoculated with 15 ml faecal slurry (1:10, w/v) and batch cultures were run for 24 h. Fermented samples were centrifuged at 13200 rcf for 10 minutes and supernatants were transferred into the dialysis tubing (100-500 Da, cut-off, 1.8 ml/cm, Spectra/Por, Biotech) and dialysed overnight at 4 °C against water (4 L) to remove low molecular weight fermented materials. The dialysis fluid was changed and dialysis continued for additional 2 h. Samples were stored at -20 °C until subsequent analysis (NP-HPLC analysis, *in vitro* assays and cell culture treatments).

NP-HPLC analysis: The phlorotannin levels of the non-digested (ND) digested (GID) and fermented (CF) extracts were analyzed by normal phase HPLC analysis as previously described [42], using an HPLC 1100 series (Agilent) equipped with LiChrospher Si60-5 column. The compounds were detected at a wavelength of 268 nm. All data were analyzed by ChemStation software. The phloroglucinol standard was injected at 0.1-100 µg/ml and phlorotannins in the extracts were analysed as phloroglucinol equivalents.

LC-MS analysis: Further characterization of the non-digested (ND) digested (GID) and fermented (CF) extracts was carried out in the negative ion mode using LC-

MS/MS utilizing electrospray ionisation (ESI) as previously described as previously described [42].

Total polyphenol content (Folin-Ciocalteu). Total polyphenol (TP) content of the non-digested (ND) digested (GID) and fermented (CF) extracts was determined by the Folin-Ciocalteu's method adapted from Yuan et al. [47]. 100 μ l of sample were mixed with 50 μ l of 2M Folin-Ciocalteu's reagent and left at room temperature for 3 min. Then 200 μ l of 20% Na_2CO_3 were added and the mixture incubated at room temperature in the dark for 45 min before transferring 150 μ l to a 96 microwell plate in duplicate. Absorbance was measured at 730 nm on a GENios TECAN microplate reader using phloroglucinol as the standard. TP content of the extracts was expressed as μ g/mg phloroglucinol equivalents.

Antioxidant capacity (TEAC assay). The antioxidant capacity of the ND, GID and CF extracts was determined by the Trolox Equivalent Antioxidant Capacity (TEAC assay) assay method [48] as follows: A stable stock solution of $\text{ABTS}^{\cdot+}$ was produced by reacting a 7 mmol/L aqueous solution of ABTS with 2.45 mmol/L potassium persulfate (final concentration) and allowing the mixture to stand in the dark at room temperature for 12–16 h before use. An $\text{ABTS}^{\cdot+}$ working solution was obtained by diluting the stock solution in ethanol to an absorbance of 0.70 (730nm). 15 μ l of each sample were mixed with 450 μ l of $\text{ABTS}^{\cdot+}$ working solution and left at room temperature for 5 min. 150 μ l of sample solutions were transferred to microwell plate in duplicate and absorbance was measured at 730 nm on the GENios TECAN microplate reader. Trolox (6-hydroxy-2,5,7,8-tetramethylchroman-2-carboxylic acid) was used as the standard for a calibration curve. Results from TEAC assay were quantified as μ mol/mg Trolox equivalents.

HT-29 cell culture: HT-29 human colorectal adenocarcinoma cells were cultured in high glucose (4.5g/L) Dulbecco's modified Eagle's medium (DMEM) containing Na pyruvate, supplemented with 10 % heat-inactivated bovine serum, 2 mM L-glutamine, 100 U/ml penicillin, and 100 µg/ml streptomycin. Cells were kept in 75cm² culture flasks at 37°C, 5% CO₂ and passaged once a week. Spent media was replaced 1 day after seeding and every 2-3 days thereafter.

Treatment of HT-29 cells for DNA damage assay (COMET): HT-29 cells were prepared as follows: 1 x 10⁶ cells/well were seeded on 6 well plates (0.5ml/well) and incubated overnight at 37 °C, 5% CO₂ before treatment. Cells were treated with 100µg/ml of extracts and incubated at 37 °C, 5% CO₂ for 24h. After the incubation time the media was removed, and cells were trypsinized, washed with PBS, centrifuged (1800rpm, 5 min), re-suspended in serum-free media and counted with trypan blue staining. The cell concentration was adjusted to 1.5 x 10⁶ cells/ml and subjected to the Comet assay.

COMET assay: An alkaline COMET assay was performed as described by Gill et al. [49] on HT-29 cells suspended in 1 ml phosphate buffer saline (PBS). Cells aliquots were incubated for 5 min on ice in presence or absence of hydrogen peroxide (75µM). Each sample was analyzed in triplicate, along with positive and negative controls. Cells were washed with PBS and centrifuged (380 g for 8 minutes) to remove residual H₂O₂, re-suspended in 0.85% low melting agarose and added into fully frosted slides coated with normal melting agarose. Slides were dried (4 °C, 10 min) and cells were lysed by incubating with lysis buffer containing 1% Triton X-100 (4 °C, 1 h). Slides were transferred into the electrophoresis tank, covered with alkaline buffer and allowed to unwind for 20 minutes prior to run (20 minutes, 26 volts, 300 mA at 4 °C). After 3 washes in neutralizing buffer the slides were stained

with ethidium bromide (20µg/ml), dried and analysed using an Epi-fluorescent Nikon microscope connected with a digital camera. Imaging was performed using a computerized image analysis system (Komet 5.5, Andor Bio-Imaging). Fifty cells per slide were analyzed randomly and the data were presented as the percentage of tail DNA.

Treatment of HT-29 cells for cell growth assay (SRB): HT-29 cells were seeded at low confluence in 24-well plates (2.5×10^4 per well) and were treated with the extracts (100, 250, 500 µg/ml) or vehicle 8 h after seeding. Following 48 h incubation (37 °C, 5% CO₂), cells were fixed and cell biomass was determined using the SRB assay [50].

SRB assay: sulforodhamine B (SRB) assay was performed as previously described [50]. Briefly, cells were fixed by the addition of 125 µl ice-cold TCA (10 % final concentration; 4 °C; 1 h). After fixing, media was removed, cells were washed and total biomass was determined using SRB (250 µl of 0.4 % SRB; 0.5 h).

Unincorporated dye was discarded by washing with 1 % acetic acid, whilst cell incorporated dye was solubilised using Tris Base (10 mM, pH 10.5). Dye incorporation, reflecting cell biomass, was measured at 492 nm, using a GENios microplate reader (TECAN, Reading, UK).

Statistical analysis: The statistical evaluation of the results was performed using GraphPad Prism version 7 (GraphPad Software, San Diego, CA, USA). Grouped data format was used, and the statistical analysis performed was a two-way analysis of variance (ANOVA) followed by a Bonferroni post-hoc t-test. Statistical significance was set at $P < 0.05$.

Results

Seaweed polyphenol extract characterization: The chromatogram (Figure 1) illustrates the traces obtained by NP-HPLC with diode array detection after injecting a water solution of the SPE and the HMW (>10KDa) and LMW (1-10KDa) fractions. The 3 chromatograms show a number of peaks eluting, predominantly at 20-70 min, the elution time being directly related to the molecular weight of the phlorotannins, where low molecular weight components will elute early and high molecular weight components will appear at later retention times. A calibration curve of phloroglucinol was used to quantify all the phlorotannins in the samples as phloroglucinol equivalents. The SPE, HMW and LMW extracts comprised a wide range of molecular weight of phloroglucinol derivatives with a total phlorotannin concentration of 358.9 µg/mg (SPE), 938.2 µg/mg (HMW), 374.5 µg/mg (LMW), as phloroglucinol equivalents.

***In vitro* digestion and characterisation:** SPE, HMW and LMW were subjected to *in vitro* digestive and fermentative processes and simulation of absorption into the circulation (Figure 2). , Samples from the procedure were analysed by NP-HPLC with diode array detection. Figure 3 shows the traces obtained for the 3 extracts (SPE, HMW and LMW) when undigested (black trace, ND), digested (grey trace, GID) and fermented (black dashed trace, CF) aliquots were injected. For all 3 extracts, we observed a reduction of the components eluting at 20-70 min after GID (grey line), which is limited for HMW (5.4%), and much more important for SPE (59.0%) and LMW (52.8%). After the CF procedure (black dashed line) we observed a further reduction of the peaks eluting at 20-70 minutes, with reduction levels of 96.8 % (SPE), 89.9 (HMW) and 68.0% (LMW). In parallel, we observe the appearance and/or increase of some large peaks eluting at earlier timepoints, 0-

20min. In our Normal Phase chromatographic conditions, the elution times are correlated to the size/molecular weight of the phlorotannin units, and therefore our results indicated the progressive reduction of the larger molecular weight polymeric phlorotannins into low molecular weight forms (oligomeric units, degradation products) during simulated gastrointestinal digestion and *in vitro* colonic fermentation. It is interesting to note that the very high molecular weight component present in the HMW fraction (≥ 1 KDa) were reduced to a very limited extent under gastric and small intestinal conditions (5.4%), whereas they were more significantly reduced during colonic fermentation conditions (89.9%).

Additionally, the samples were analysed by LC-MS/MS utilizing electrospray ionisation (ESI) in negative ion mode (Supplementary tables 1 and 2) as previously described [42]. In both GID and CF extracts, we found a range of newly formed metabolites, and we were able to identify molecular ions and fragments corresponding to hydroxytrifupalol A (405), the C-O-C dimer of phloroglucinol (247), the dimer diphlorethol/ difucol (249) and 7-hydroxyeckol (387), in accordance with what observed in our previous study [42].

Total Polyphenol content and antioxidant capacity.

The three extracts (SPE, HMW and LMW) undigested (ND), digested (GID) and fermented (CF) were assessed for TP content (Figure 4A) and for *in vitro* antioxidant capacity (Figure 4B) using the TEAC assay method. As shown in Figure 4A, before digestion (ND) the high molecular weight fraction HMW had the highest TP content (441.6 $\mu\text{g}/\text{mg}$), followed by SPE (211.9 $\mu\text{g}/\text{mg}$) and LMW (155.3 $\mu\text{g}/\text{mg}$). The TP content of all extracts was significantly reduced by GID ($P < 0.001$ vs. ND), with reduction levels of 81.7% (SPE), 40.4% (HMW) and 64.7% (LMW). After CF, the TP levels were further reduced ($P < 0.001$ vs. ND) to 99.5% (SPE), 86.5% (HMW) and

92.5% (LMW) of the initial levels measured in the ND extracts. In accordance with TP results, the antioxidant test (Figure 4B) showed that before digestion the high molecular weight fraction HMW had the highest TEAC value (3.7 $\mu\text{mol}/\text{mg}$), followed by SPE (2.6 $\mu\text{mol}/\text{mg}$) and LMW (2.1 $\mu\text{mol}/\text{mg}$). Digestion significantly reduced the TEAC value of all extracts ($P<0.001$ vs. ND), with reduction levels of 79.5% (SPE), 27.4% (HMW) and 68.7% (LMW). After CF, the TEAC values were further reduced ($P<0.001$ vs. ND) to 94.8% (SPE), 82.4% (HMW) and 84.0% (LMW) of the initial levels measured in the ND extracts. It is interesting to note that TP levels and TEAC values of the HMW fraction were affected less than the HMW fraction by the GID procedure.

DNA damage in human colon cells HT29 (COMET assay)

HT-29 cells were exposed to the GID and CF extracts (100 $\mu\text{g}/\text{ml}$, 24 h) and we tested the ability of each extract (SPE, HMW, LMW) to reduce H_2O_2 induced cellular DNA damage (COMET assay). As shown in Figure 5, a low level of DNA damage (% of DNA in tail) was measured in the controls whereas in cells challenged with H_2O_2 , the DNA damage was significantly increased ($P<0.001$). Among the extracts subjected to the GID procedure, only HMW was able to significantly reduce DNA damage compared to H_2O_2 alone ($P<0.01$), whereas SPE and LMW were not effective ($P>0.05$). When analysing the effects of the extracts subjected to CF procedure, however, all extracts were significantly effective ($P<0.001$) in reducing the DNA damage induced by H_2O_2 , despite the loss of antioxidant capacity of the CF extracts. The statistical analysis also highlighted that within each group (GID and CF) the effect of HMW was significantly higher than SPE and LMW ($P<0.05$).

Cell growth inhibition in human colon cells HT29 (SRB assay):

HT-29 cells were exposed to the GID (Figure 6A) and CF (Figure 6B) extracts (100, 250 and 500 µg/ml, 72 h) and we tested the ability of each extract (SPE, HMW, LMW) to induce cell growth inhibition by measuring changes in the cell biomass (SRB assay).

Fig.6A shows that the lower concentration tested (100 µg/ml) was ineffective ($P>0.05$), whereas at higher doses all GID extracts significantly inhibited ($P<0.01$) HT-29 cell growth, with HMW being the most effective. In contrast, when the cells were treated with the CF extracts (Figure 6B), only HMW was able to significantly inhibit ($P<0.05$) the growth of the cells at the concentrations 250 and 500 µg/ml. It is interesting to note that the HMW seems to exert the strongest effects in both GID and CF groups, and again it is worth highlighting the fact that the CF extract is able to exert a significant effect despite the loss of antioxidant capacity.

Discussion

Over the past few years, significant interest has developed in bioactives from brown seaweed [11, 51] and phlorotannins have gained attention for their potential beneficial effects for human health [11]. However, due to the many analytical challenges faced when conducting phlorotannin analysis, knowledge on phlorotannin bioavailability, gastrointestinal modifications and their impact on bioactivity is scarce or absent. We recently reported [42] for the first time that seaweed phlorotannins are metabolized to small oligomeric units, and their time of appearance in urine and plasma is indicative of a predominant large intestinal metabolic transformation. The analysis of phlorotannins is challenging due to high range of molecular weight

present, and their characterisation is complicated further by the lack of commercially available standards, therefore in our recent work we made use of both reverse phase (RP) and normal phase (NP) HPLC chromatography coupled to diode array (DAD) and mass spectrometry detection to try and understand how phlorotannins are digested and absorbed into the circulation, and what kind of modifications can occur in the small and large intestine prior to absorption [42]. NP-HPLC coupled to DAD is indeed a simple and useful tool for the analysis of oligomeric and polymeric phlorotannins [12], and we used it in the present study to characterize phlorotannins in the 3 extracts, and to understand the modifications they are subjected to during gastrointestinal digestion and colonic fermentation at different degrees of polymerization. Our results highlight a large reduction in the amount of the polymeric forms eluting a late retention times in our NP method. The forms with molecular weight > 10KDa were only marginally affected by the GID condition, whereas they were largely reduced following CF in the presence of the large intestinal microbiota. In addition, further characterization via LC-MS/MS analysis of the GID and CF extracts has indicated the presence of some oligomeric phlorotannins (hydroxytrifuhalol A, diphloretol/difucol, 7-hydroxyeckol, C-O-Cdimer of phloroglucinol), in addition to a range of newly formed, unknown metabolites. In parallel, using traditional *in vitro* tests for TP content and antioxidant scavenging capacity, we observed a reduction of both after *in vitro* GID and CF. These results imply that the putative beneficial health effects of polyphenolic compounds cannot be meaningfully assessed by measuring their total polyphenolic content and scavenging potential without taking into consideration the impact of digestive and fermentative processes in the gastro-intestinal tract. In the upper gastrointestinal tract, where GID occurs, dietary polyphenols are exposed to specific pH conditions, and act as

substrates for a number of enzymes found both in the stomach and small intestine [40]. Further transformations can occur in the colon, where the enzymes of the gut microbiota act to breakdown complex polyphenolic structures to smaller units.

Bacterial enzymes may catalyse many reactions including hydrolysis, dehydroxylation, demethylation, ring cleavage and decarboxylation as well as rapid de-conjugation [52].

In addition, our study made use of a simple cell culture system (colonic HT-29 cells), to assess changes in bioactivity of phlorotannins after digestion and fermentation.

We stress the attention on the fact that despite the significant reduction of phlorotannins, TP and antioxidant potential in GID conditions, the HMW extract exerted a significant protective effect in counteracting H₂O₂-induced DNA damage. In addition, after CF all extracts showed a further reduction of TP and antioxidant capacity, thus they were able to significantly reduce H₂O₂-induced DNA damage, indicating how the potential beneficial effects of the extracts are not linked to their *in vitro* antioxidant potential. Our results are consistent with observations of (poly)phenolic compounds from other terrestrial dietary sources [53-56]. Our results also highlight the strong impact of GID and CF on the ability of the extracts to induce cell growth inhibition on HT-29 cells. In this case, all GID extracts exerted a significant effect, whereas after CF only HMW was able to significantly inhibit the growth of the cells. Therefore we highlight the differential effects of GID and CF, with CF more strongly influencing the anti-genotoxic potential of the extract, whereas GID has more strongly impacted the potential of the extracts to induce cell growth inhibition. Our data indicates that the gut microbiota metabolism of the seaweed extracts increased their ability to counteract the H₂O₂ induced DNA damage, whereas it reduced the ability of the extracts to inhibit cell growth.

Therefore, the present work gives some important insights on the role of gastrointestinal digestion and colonic biotransformation on phlorotannin bioactivity in the colon, providing a basis for further investigating the seaweed-derived bioactive components *in vivo*, and help to elucidate their mechanism of action.

Accepted Article

References

- [1] Arasaki, S., Arasaki, T., *Low calorie, high nutrition vegetables from the sea to help you look and feel better*, Japan Publications, Tokyo 1983.
- [2] Gusman, J., *Vegetables from the sea : everyday cooking with sea greens*, William Morrow, New York, NY 2003.
- [3] Collins, K. G., Fitzgerald, G. F., Stanton, C., Ross, R. P., Looking Beyond the Terrestrial: The Potential of Seaweed Derived Bioactives to Treat Non-Communicable Diseases. *Marine drugs* 2016, 14.
- [4] Heffernan, N., Brunton, N. P., FitzGerald, R. J., Smyth, T. J., Profiling of the molecular weight and structural isomer abundance of macroalgae-derived phlorotannins. *Marine drugs* 2015, 13, 509-528.
- [5] Valverde, J., Hayes, M., McLoughlin, P., Rai, D. K., Soler-Vila, A., Cardioprotective potential of Irish macroalgae: generation of glycine betaine and dimethylsulfoniopropionate containing extracts by accelerated solvent extraction. *Planta medica* 2015, 81, 679-684.
- [6] Wang, T., Li, Z., Yuan, F., Lin, H., Pavase, T. R., Effects of brown seaweed polyphenols, alpha-tocopherol, and ascorbic acid on protein oxidation and textural properties of fish mince (*Pagrosomus major*) during frozen storage. *Journal of the science of food and agriculture* 2017, 97, 1102-1107.
- [7] Kirke, D. A., Smyth, T. J., Rai, D. K., Kenny, O., Stengel, D. B., The chemical and antioxidant stability of isolated low molecular weight phlorotannins. *Food chemistry* 2017, 221, 1104-1112.
- [8] Tavares Estevam, A. C., Alonso Buriti, F. C., de Oliveira, T. A., Pereira, E. V., *et al.*, Effect of Aqueous Extract of the Seaweed *Gracilaria domingensis* on the Physicochemical, Microbiological, and Textural Features of Fermented Milks. *Journal of food science* 2016, 81, C874-880.
- [9] MacArtain, P., Gill, C. I., Brooks, M., Campbell, R., Rowland, I. R., Nutritional value of edible seaweeds. *Nutrition reviews* 2007, 65, 535-543.

- [10] Park, E. J., Pezzuto, J. M., Antioxidant marine products in cancer chemoprevention. *Antioxidants & redox signaling* 2013, 19, 115-138.
- [11] Brown, E. M., Allsopp, P. J., Magee, P. J., Gill, C. I. R., *et al.*, Seaweed and human health. *Nutrition reviews* 2014, 72, 205-216.
- [12] Koivikko, R., Eranen, J. K., Loponen, J., Jormalainen, V., Variation of phlorotannins among three populations of *Fucus vesiculosus* as revealed by HPLC and colorimetric quantification. *Journal of chemical ecology* 2008, 34, 57-64.
- [13] Dutot, M., Fagon, R., Hemon, M., Rat, P., Antioxidant, anti-inflammatory, and anti-senescence activities of a phlorotannin-rich natural extract from brown seaweed *Ascophyllum nodosum*. *Applied biochemistry and biotechnology* 2012, 167, 2234-2240.
- [14] Wijesinghe, W. A., Jeon, Y. J., Exploiting biological activities of brown seaweed *Ecklonia cava* for potential industrial applications: a review. *International journal of food sciences and nutrition* 2012, 63, 225-235.
- [15] Ragan, M. A., Craigie, J. S., Physodes and the phenolic compounds of brown algae. Isolation and characterization of phloroglucinol polymers from *Fucus vesiculosus* (L.). *Canadian journal of biochemistry* 1976, 54, 66-73.
- [16] Glombitza, K. W., Hauperich, S., Keusgen, M., Phlorotannins from the brown algae *Cystophora torulosa* and *Sargassum spinuligerum*. *Natural toxins* 1997, 5, 58-63.
- [17] Glombitza, K. W., Schmidt, A., Nonhalogenated and halogenated phlorotannins from the brown alga *carpophyllum angustifolium*. *Journal of natural products* 1999, 62, 1238-1240.
- [18] Glombitza, K. W., Vogels, H. P., Antibiotics from Algae. XXXV. Phlorotannins from *Ecklonia maxima*¹. *Planta medica* 1985, 51, 308-312.
- [19] Glombitza, K. W., Zieprath, G., Phlorotannins from the Brown Alga *Analipus japonicus*¹. *Planta medica* 1989, 55, 171-175.
- [20] Pal Singh, I., Bharate, S. B., Phloroglucinol compounds of natural origin. *Natural product reports* 2006, 23, 558-591.

- [21] Kim, S. K., Himaya, S. W., Medicinal effects of phlorotannins from marine brown algae. *Advances in food and nutrition research* 2011, *64*, 97-109.
- [22] Tsujimoto, M., Yokota, S., Vilcek, J., Weissmann, G., Tumor necrosis factor provokes superoxide anion generation from neutrophils. *Biochemical and biophysical research communications* 1986, *137*, 1094-1100.
- [23] Kang, M. C., Cha, S. H., Wijesinghe, W. A., Kang, S. M., *et al.*, Protective effect of marine algae phlorotannins against AAPH-induced oxidative stress in zebrafish embryo. *Food chemistry* 2013, *138*, 950-955.
- [24] Kim, A. R., Shin, T. S., Lee, M. S., Park, J. Y., *et al.*, Isolation and identification of phlorotannins from *Ecklonia stolonifera* with antioxidant and anti-inflammatory properties. *Journal of agricultural and food chemistry* 2009, *57*, 3483-3489.
- [25] Kim, S. M., Kang, K., Jeon, J. S., Jho, E. H., *et al.*, Isolation of phlorotannins from *Eisenia bicyclis* and their hepatoprotective effect against oxidative stress induced by tert-butyl hydroperoxide. *Applied biochemistry and biotechnology* 2011, *165*, 1296-1307.
- [26] DeForge, L. E., Fantone, J. C., Kenney, J. S., Remick, D. G., Oxygen radical scavengers selectively inhibit interleukin 8 production in human whole blood. *The Journal of clinical investigation* 1992, *90*, 2123-2129.
- [27] McCord, J. M., Oxygen-derived radicals: a link between reperfusion injury and inflammation. *Federation proceedings* 1987, *46*, 2402-2406.
- [28] Jung, H. A., Jin, S. E., Ahn, B. R., Lee, C. M., Choi, J. S., Anti-inflammatory activity of edible brown alga *Eisenia bicyclis* and its constituents fucosterol and phlorotannins in LPS-stimulated RAW264.7 macrophages. *Food and chemical toxicology : an international journal published for the British Industrial Biological Research Association* 2013, *59*, 199-206.
- [29] Kim, T. H., Ku, S. K., Lee, T., Bae, J. S., Vascular barrier protective effects of phlorotannins on HMGB1-mediated proinflammatory responses in vitro and in vivo. *Food and chemical toxicology : an international journal published for the British Industrial Biological Research Association* 2012, *50*, 2188-2195.

- [30] Biswas, S. K., McClure, D., Jimenez, L. A., Megson, I. L., Rahman, I., Curcumin induces glutathione biosynthesis and inhibits NF-kappaB activation and interleukin-8 release in alveolar epithelial cells: mechanism of free radical scavenging activity. *Antioxidants & redox signaling* 2005, 7, 32-41.
- [31] Nwosu, F., Morris, J., Lund, V. A., Stewart, D., *et al.*, Anti-proliferative and potential anti-diabetic effects of phenolic-rich extracts from edible marine algae. *Food chemistry* 2010, 126, 1006-1012.
- [32] Ryu, B., Li, Y., Qian, Z. J., Kim, M. M., Kim, S. K., Differentiation of human osteosarcoma cells by isolated phlorotannins is subtly linked to COX-2, iNOS, MMPs, and MAPK signaling: implication for chronic articular disease. *Chemico-biological interactions* 2009, 179, 192-201.
- [33] Yoon, N. Y., Eom, T. K., Kim, M. M., Kim, S. K., Inhibitory effect of phlorotannins isolated from *Ecklonia cava* on mushroom tyrosinase activity and melanin formation in mouse B16F10 melanoma cells. *Journal of agricultural and food chemistry* 2009, 57, 4124-4129.
- [34] Melanson, J. E., MacKinnon, S. L., Characterization of Phlorotannins from Brown Algae by LC-HRMS. *Methods in molecular biology* 2015, 1308, 253-266.
- [35] Wheeler, D. S., Catravas, J. D., Odoms, K., Denenberg, A., *et al.*, Epigallocatechin-3-gallate, a green tea-derived polyphenol, inhibits IL-1 beta-dependent proinflammatory signal transduction in cultured respiratory epithelial cells. *The Journal of nutrition* 2004, 134, 1039-1044.
- [36] Steevensz, A. J., Mackinnon, S. L., Hankinson, R., Craft, C., *et al.*, Profiling phlorotannins in brown macroalgae by liquid chromatography-high resolution mass spectrometry. *Phytochemical analysis : PCA* 2012, 23, 547-553.
- [37] Jegou, C., Kervarec, N., Cerantola, S., Bihannic, I., Stiger-Pouvreau, V., NMR use to quantify phlorotannins: the case of *Cystoseira tamariscifolia*, a phloroglucinol-producing brown macroalga in Brittany (France). *Talanta* 2015, 135, 1-6.

- [38] Wijesinghe, W. A., Jeon, Y. J., Exploiting biological activities of brown seaweed *Ecklonia cava* for potential industrial applications: a review. *International journal of food sciences and nutrition* 2011, 63, 225-235.
- [39] Murray, M., Dordevic, A. L., Ryan, L., Bonham, M. P., An emerging trend in functional foods for the prevention of cardiovascular disease and diabetes: Marine algal polyphenols. *Critical reviews in food science and nutrition* 2016, 0.
- [40] Corona, G., Vauzour, D., Amini, A., Spencer, J. P., in: Watson, R. R., Preedy, V. R., Zibadi, S. (Eds.), *Polyphenols in human health and disease*, Elsevier 2013, pp. 591-604.
- [41] Corona, G., Tzounis, X., Assunta Dessi, M., Deiana, M., *et al.*, The fate of olive oil polyphenols in the gastrointestinal tract: implications of gastric and colonic microflora-dependent biotransformation. *Free Radic Res* 2006, 40, 647-658.
- [42] Corona, G., Ji, Y., Aneboonlap, P., Hotchkiss, S., *et al.*, Gastrointestinal modifications and bioavailability of brown seaweed phlorotannins and effects on inflammatory markers. *The British journal of nutrition* 2016, 115, 1240-1253.
- [43] Vauzour, D., Rodriguez-Mateos, A., Corona, G., Oruna-Concha, M. J., Spencer, J. P., Polyphenols and human health: prevention of disease and mechanisms of action. *Nutrients* 2010, 2, 1106-1131.
- [44] McDougall, G. J., Dobson, P., Smith, P., Blake, A., Stewart, D., Assessing potential bioavailability of raspberry anthocyanins using an in vitro digestion system. *Journal of agricultural and food chemistry* 2005, 53, 5896-5904.
- [45] Mills, D. J., Tuohy, K. M., Booth, J., Buck, M., *et al.*, Dietary glycated protein modulates the colonic microbiota towards a more detrimental composition in ulcerative colitis patients and non-ulcerative colitis subjects. *Journal of applied microbiology* 2008, 105, 706-714.
- [46] Tzounis, X., Vulevic, J., Kuhnle, G. G., George, T., *et al.*, Flavanol monomer-induced changes to the human faecal microflora. *The British journal of nutrition* 2008, 99, 782-792.
- [47] Yuan, Y. V., Carrington, M. F., Walsh, N. A., Extracts from dulse (*Palmaria palmata*) are effective antioxidants and inhibitors of cell proliferation in vitro. *Food and chemical toxicology*

: an international journal published for the British Industrial Biological Research Association

2005, 43, 1073-1081.

[48] Pellegrini, N., Serafini, M., Colombi, B., Del Rio, D., *et al.*, Total antioxidant capacity of plant foods, beverages and oils consumed in Italy assessed by three different in vitro assays. *The Journal of nutrition* 2003, 133, 2812-2819.

[49] Gill, C. I., Haldar, S., Porter, S., Matthews, S., *et al.*, The effect of cruciferous and leguminous sprouts on genotoxicity, in vitro and in vivo. *Cancer epidemiology, biomarkers & prevention* : 2004, 13, 1199-1205.

[50] Corona, G., Deiana, M., Incani, A., Vauzour, D., *et al.*, Inhibition of p38/CREB phosphorylation and COX-2 expression by olive oil polyphenols underlies their anti-proliferative effects. *Biochemical and biophysical research communications* 2007, 362, 606-611.

[51] Chater, P. I., Wilcox, M. D., Houghton, D., Pearson, J. P., The role of seaweed bioactives in the control of digestion: implications for obesity treatments. *Food & function* 2015, 6, 3420-3427.

[52] Selma, M. V., Espin, J. C., Tomas-Barberan, F. A., Interaction between Phenolics and Gut Microbiota: Role in Human Health. *Journal of agricultural and food chemistry* 2009, 57, 6485-6501.

[53] Brown, E. M., McDougall, G. J., Stewart, D., Pereira-Caro, G., *et al.*, Persistence of anticancer activity in berry extracts after simulated gastrointestinal digestion and colonic fermentation. *PLoS one* 2012, 7, e49740.

[54] Brown, E. M., Nitecki, S., Pereira-Caro, G., McDougall, G. J., *et al.*, Comparison of in vivo and in vitro digestion on polyphenol composition in lingonberries: potential impact on colonic health. *BioFactors* 2014, 40, 611-623.

[55] McDougall, G. J., Allwood, J. W., Pereira-Caro, G., Brown, E. M., *et al.*, Novel colon-available triterpenoids identified in raspberry fruits exhibit antigenotoxic activities in vitro. *Molecular nutrition & food research* 2017, 61.

[56] Kaulmann, A., Andre, C. M., Schneider, Y. J., Hoffmann, L., Bohn, T., Carotenoid and polyphenol bioaccessibility and cellular uptake from plum and cabbage varieties. *Food chemistry* 2016, 197, 325-332.

Accepted Article

Figure Legends:

Figure 1. Chromatographic separation of phlorotannins contained in the seaweed polyphenol extract (SPE), High Molecular Weight (HMW) and Low Molecular Weight (LMW) fractions by Normal-Phase HPLC with diode array detection (268nm).

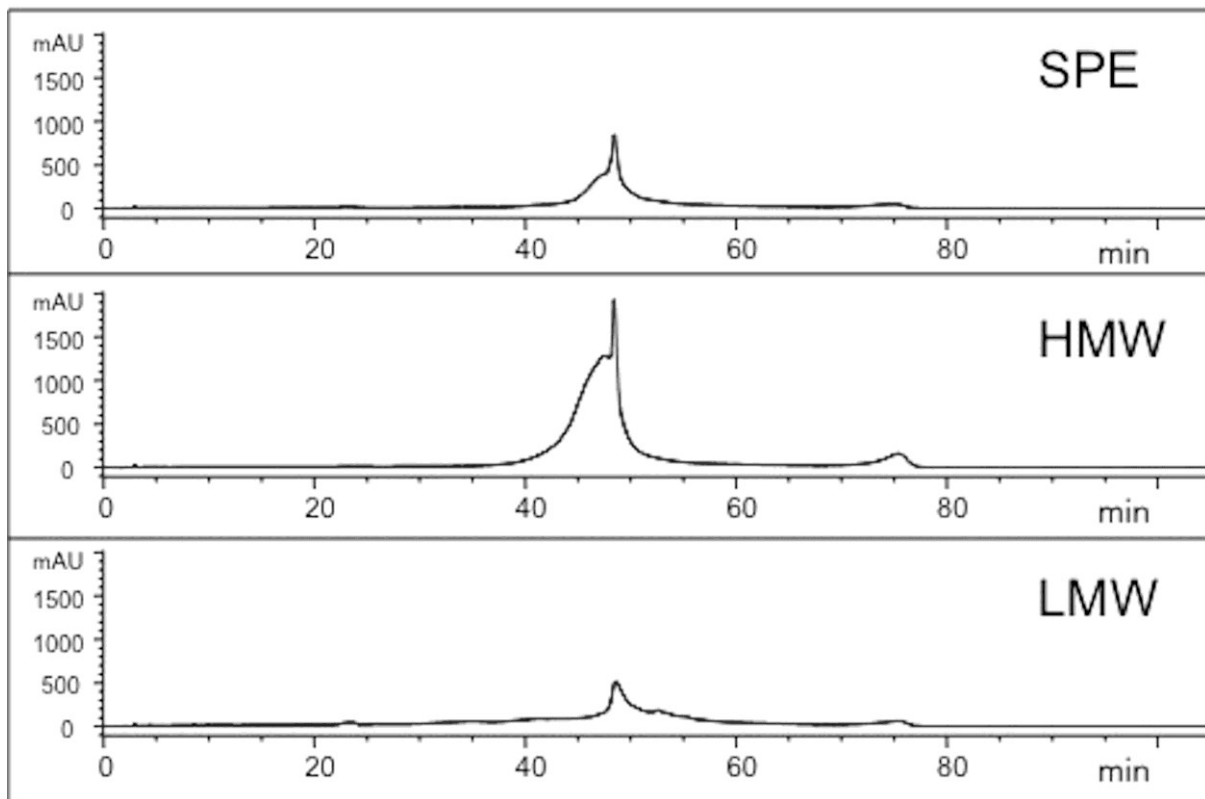


Figure 2. Digestion scheme. Schematic illustration of the simulated Gastro-Intestinal Digestion (GID) and Colonic Fermentation (CF) procedures.

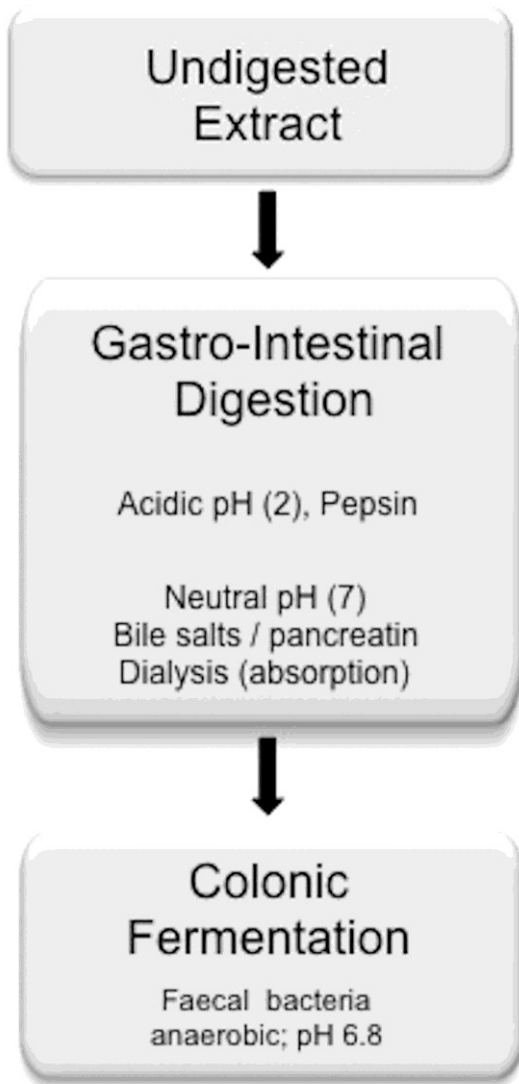


Figure 3. HPLC analysis/digestion. Normal-Phase HPLC analysis (268nm) of the extracts showing the impact of digestion and fermentation on the phlorotannin content. Black line = Non-Digested (ND); grey line = Gastro-Intestinal Digestion (GID); black dashed line = Colonic Fermentation (CF).

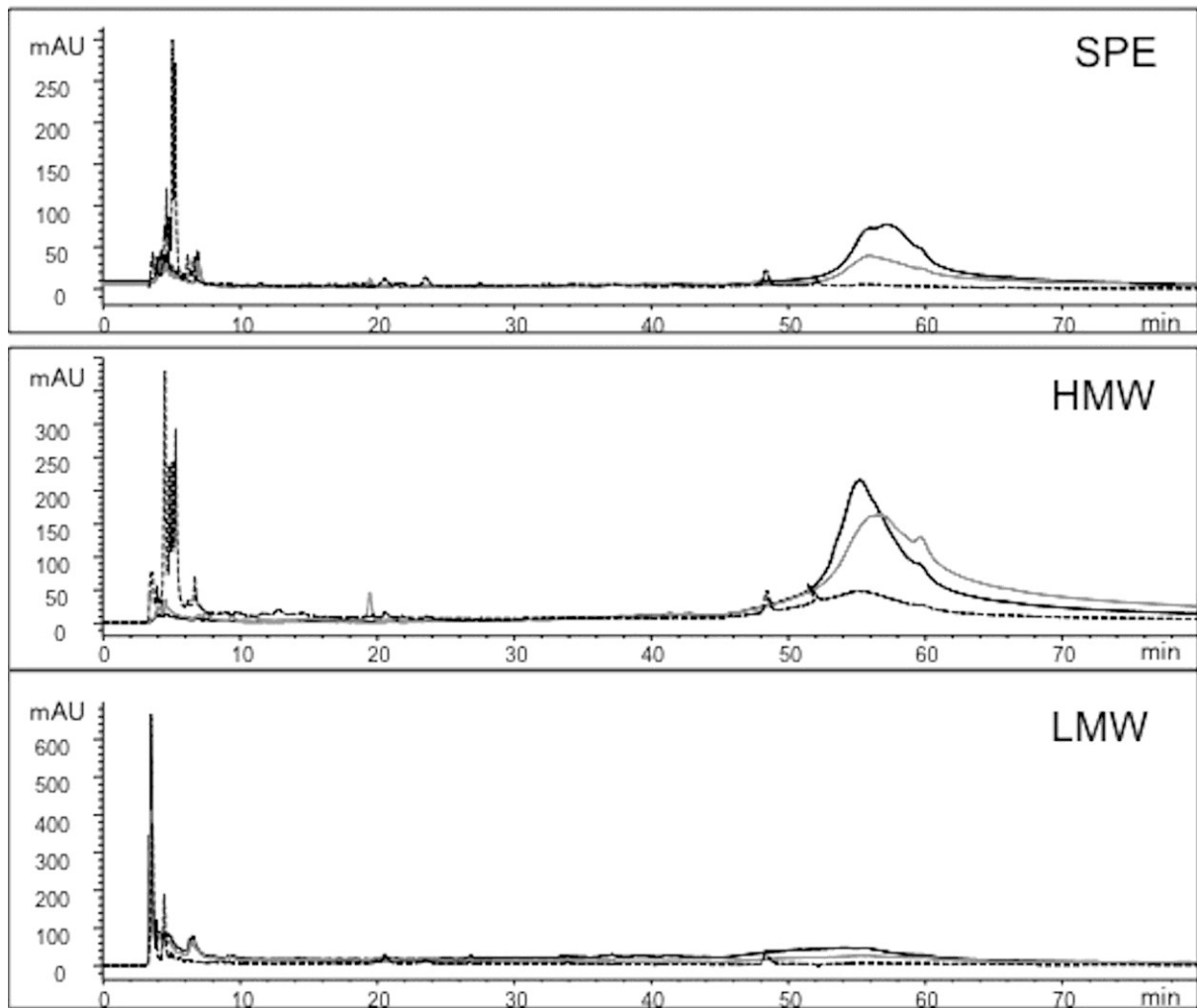


Figure 4. *In vitro* activity of seaweed extracts. Total Polyphenol content (A) and Trolox Equivalent Antioxidant Capacity (B). Data are means of 3 separate experiments, each performed in 3 replicates ($n = 9$), and presented as mean \pm SEM. Statistical analysis of grouped data was conducted by Two-way ANOVA, using a Bonferroni post-hoc test to analyse simple effects of the digestion procedure in each extracts. In all groups, $P < 0.001$ vs. ND.

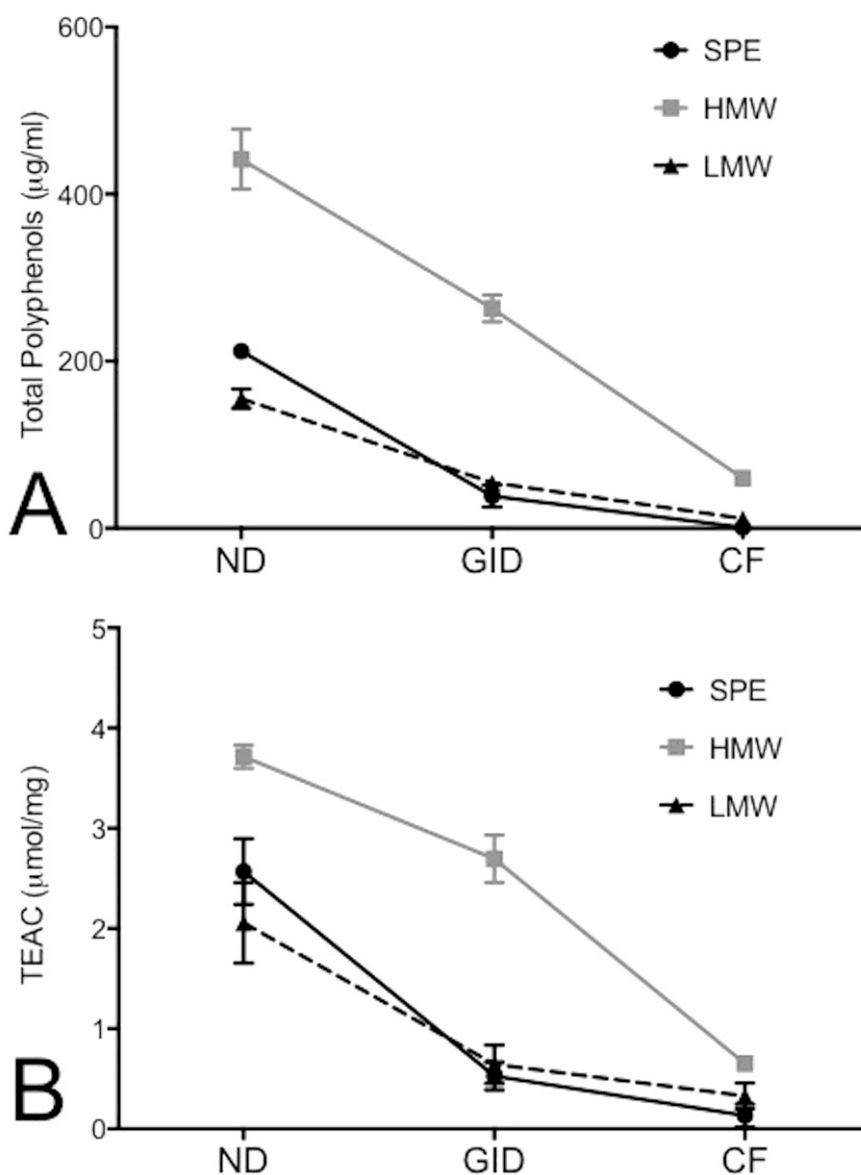


Figure 5. DNA damage (% cells in tail) measured by COMET assay in HT-29 cells treated with digested (GID) and fermented (CF) seaweed extracts. Data are means of 3 separate experiments, each performed in 3 replicates ($n = 9$), and presented as mean \pm SEM. Statistical analysis of grouped data was conducted by Two-way ANOVA, using a Bonferroni post-hoc test to analyse simple effects of the treatments for each digestion procedure. A = $P < 0.05$ vs. control; a = $P < 0.05$ vs. H_2O_2

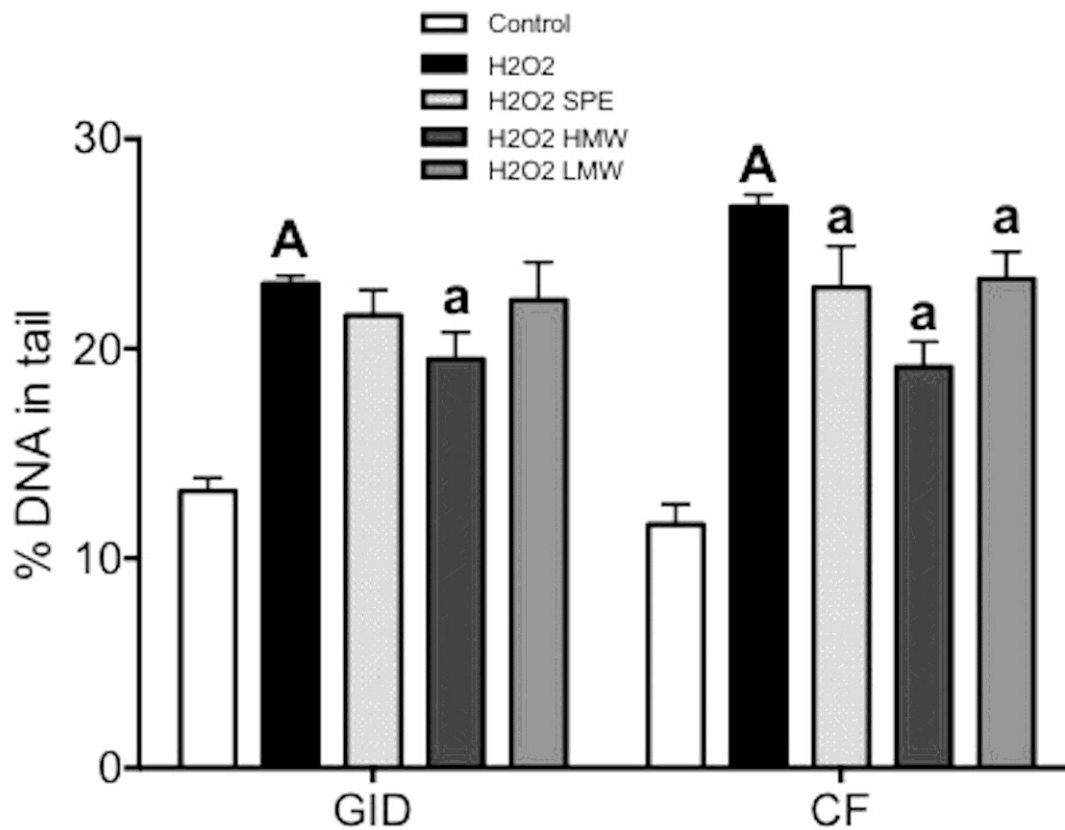
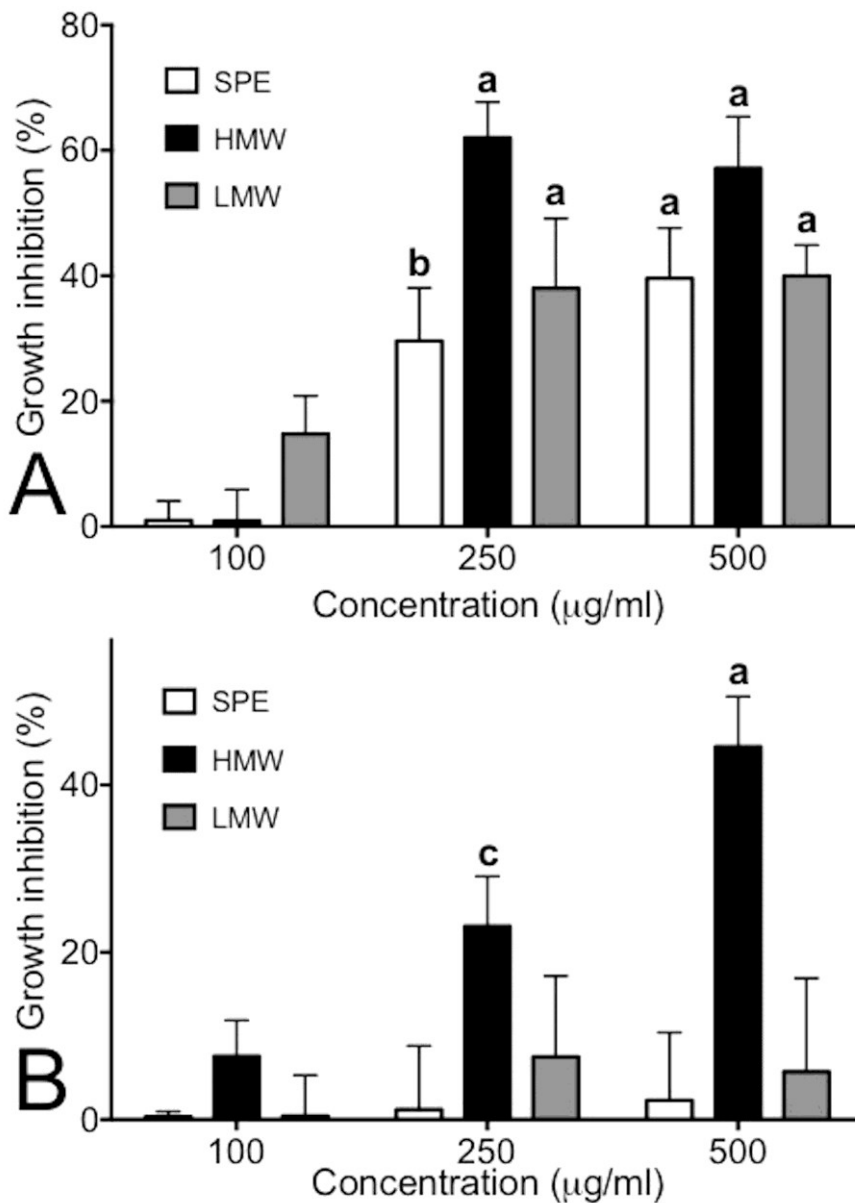


Figure 6. SRB assay. Cell growth inhibition induced by in Ht-29 cells pretreated with SPE, HMW and LMW extracts (100, 250 and 500 $\mu\text{g/ml}$) for 24h. GID extracts (A) and CF extract (B). Data are means of 3 separate experiments, each performed in 3 replicates ($n = 9$), and presented as mean \pm SEM. Statistical analysis was conducted by Two-way ANOVA with Bonferroni post-hoc test. $a = P < 0.05$ vs. control; $A = P < 0.05$ vs. control H_2O_2 .



Author contributions:

G.C., J.P.E.S, P.Y. and I.R. designed the research. G.C. organized and coordinated all parts of the work. S.H. overviewed the preparation of seaweed materials and extracts. M. M.C. and Y.G. aided with the experimental work. G.C. analysed and summarised all the data. G.C. drafted the manuscript, C.G. and I.R revised the manuscript. I.R. had primary responsibility for final content.

Acknowledgements:

This work is part of the SWAFAX project (no. 262519), funded by the European Commission under the Capacities Programme (FP7)

Conflict of interest statement:

All authors declare no conflicts of interest.