

Tightening of tropical ascent and high clouds key to precipitation change in a warmer climate

Article

Published Version

Creative Commons: Attribution 4.0 (CC-BY)

Open Access

Su, H., Jiang, J. H., Neelin, J. D., Shen, T. J., Zhai, C., Yue, Q., Wang, Z., Huang, L., Choi, Y.-S., Stephens, G. L. and Yung, Y. L. (2017) Tightening of tropical ascent and high clouds key to precipitation change in a warmer climate. *Nature Communications*, 8. 15771. ISSN 2041-1723 doi: <https://doi.org/10.1038/ncomms15771> Available at <http://centaur.reading.ac.uk/71840/>

It is advisable to refer to the publisher's version if you intend to cite from the work. See [Guidance on citing](#).

Published version at: <http://dx.doi.org/10.1038/ncomms15771>

To link to this article DOI: <http://dx.doi.org/10.1038/ncomms15771>

Publisher: Nature Publishing Group

All outputs in CentAUR are protected by Intellectual Property Rights law, including copyright law. Copyright and IPR is retained by the creators or other copyright holders. Terms and conditions for use of this material are defined in the [End User Agreement](#).

www.reading.ac.uk/centaur

CentAUR

Central Archive at the University of Reading

Reading's research outputs online

ARTICLE

Received 20 Jun 2016 | Accepted 27 Apr 2017 | Published 7 Jun 2017

DOI: 10.1038/ncomms15771

OPEN

Tightening of tropical ascent and high clouds key to precipitation change in a warmer climate

Hui Su¹, Jonathan H. Jiang¹, J. David Neelin², T. Janice Shen¹, Chengxing Zhai¹, Qing Yue¹, Zhien Wang³, Lei Huang^{1,4}, Yong-Sang Choi⁵, Graeme L. Stephens¹ & Yuk L. Yung⁶

The change of global-mean precipitation under global warming and interannual variability is predominantly controlled by the change of atmospheric longwave radiative cooling. Here we show that tightening of the ascending branch of the Hadley Circulation coupled with a decrease in tropical high cloud fraction is key in modulating precipitation response to surface warming. The magnitude of high cloud shrinkage is a primary contributor to the intermodel spread in the changes of tropical-mean outgoing longwave radiation (OLR) and global-mean precipitation per unit surface warming (dP/dT_s) for both interannual variability and global warming. Compared to observations, most Coupled Model Inter-comparison Project Phase 5 models underestimate the rates of interannual tropical-mean $dOLR/dT_s$ and global-mean dP/dT_s , consistent with the muted tropical high cloud shrinkage. We find that the five models that agree with the observation-based interannual dP/dT_s all predict dP/dT_s under global warming higher than the ensemble mean dP/dT_s from the ~ 20 models analysed in this study.

¹Jet Propulsion Laboratory, California Institute of Technology, 4800 Oak Grove Drive, Mail Stop 183-701, Pasadena, California 91109-8099, USA.

²Department of Atmospheric and Oceanic Sciences, University of California, Los Angeles, Los Angeles, California 90095, USA. ³Department of

Atmospheric Science, University of Wyoming, Laramie, Wyoming 82071, USA. ⁴Joint Institute for Regional Earth System Science and Engineering,

University of California, Los Angeles, Los Angeles, California 90095, USA. ⁵Department of Environmental Science and Engineering, Ewha Womans

University, Seoul 120-750, South Korea. ⁶Division of Geological and Planetary Sciences, California Institute of Technology, Pasadena, California 91125, USA.

Correspondence and requests for materials should be addressed to H.S. (email: Hui.Su@jpl.nasa.gov).

Precipitation is vital to life on Earth and regional precipitation changes accompanying anticipated global warming could exert profound impacts on ecosystems and human society. As a first-order constraint on the response of the hydrological cycle to climate change, the rate of global-mean precipitation (P) change per unit surface warming (dP/dT_s) is an essential measure that represents the sensitivity of the climate system to global warming. However, model predictions of dP/dT_s under various warming scenarios vary from 1 to 3% K^{-1} (ref. 1), resulting from model differences in radiative forcings and differences in responses to forcings. The responses include the fast response to direct forcings and the slow response mediated by the increase of surface temperature (T_s)^{2,3}. The temperature-mediated dP/dT_s , termed hydrological sensitivity, ranges from 2 to 3% K^{-1} (refs 3–5). Identification of the dominant processes that govern the intermodel spread in dP/dT_s is critical for reducing the uncertainties of climate change predictions.

From the atmospheric energy budget point of view, on timescales of a year and longer, global-mean atmospheric latent heating (roughly P multiplied by the latent heat of vapourization L_v) is approximately balanced by atmospheric column-integrated longwave cooling (LWC), shortwave absorption (SWA) and surface sensible heat exchange (SH)^{6–10}, that is,

$$L_v P = LWC - SWA - SH. \quad (1)$$

On climatological means and for temporal variations, the magnitudes of LWC (signed positive for cooling the atmosphere) and its changes are more than twice of those for SWA and SH (signed positive for heating the atmosphere)^{11,12}. Hence, global-mean precipitation is primarily determined by the rate of LWC^{13,14} and the model disagreement in the LWC sensitivity to surface warming ($dLWC/dT_s$) contributes predominantly to the intermodel spread in dP/dT_s , although the model differences in the sensitivities of SWA, (refs 5,15) and SH (refs 3,16,17) to T_s can also contribute substantially to the diversity in dP/dT_s .

A recent article¹⁸ suggested that a stronger decrease of tropical high-altitude cloud fraction (CF) with increasing T_s in a climate model could lead to a lower equilibrium climate sensitivity (ECS) and a higher hydrological sensitivity. They conjectured that the tropical high cloud shrinkage in response to surface warming, termed the iris effect analogous to a human's eye in response to varying light intensity¹⁹, could result from enhanced convective aggregation in a warmer climate. Another study postulated that increased tropospheric static stability with surface warming could reduce the radiatively-driven clear-sky upper tropospheric convergence, leading to decreased anvil cloud amount²⁰, consistent with the fixed anvil temperature hypothesis^{21,22}. However, it is not clear whether the high CF change is a dominant factor that determines the intermodel spread in dP/dT_s in the models that participated in the Coupled Model Inter-comparison Project Phase 5 (CMIP5)²³ and what model physical processes are important for constraining the intermodel spreads in cloud and precipitation changes.

It is well known that the changes of cloud and precipitation are closely related to the changes of large-scale circulation^{24–29}; however, no prior studies have demonstrated quantitatively the relation between circulation change and cloud amount change in terms of intermodel spreads. Such relations may shed light on the pathways towards improvements of model predictions of future climate change.

The schematic Fig. 1 illustrates the changes of the Hadley Circulation, tropical clouds, outgoing longwave radiation (OLR) at the top-of-atmosphere (TOA), and precipitation based on ensemble means of climate model simulations under global warming^{29,30}. A prominent feature of the tropical circulation

change in a warmer climate is the intensification of zonal-mean equatorial ascent flanked by the weakening of upward motion to its north and south^{29,30}. This feature is simulated by most climate models with varying magnitudes^{29,31}. We term it the tightening of Hadley ascent (THA), in contrast to the well-known widening of the Hadley cell^{32–34} as the latter highlights the poleward expansion of the descending branch of the Hadley Circulation even though the tightening and widening occur simultaneously under global warming^{29,31}. A narrowing of the intertropical convergence zone (ITCZ) has been found in reanalyses data and precipitation observations from 1979 to 2014 (ref. 35). The physical mechanisms for the narrowing of the ITCZ are attributed to the advection of moist static energy by the zonal-mean circulation and the moist static energy divergence by transient eddies³¹, broadly consistent with the upped-ante mechanism that emphasizes dry air advection from non-convective to convective regions²⁶. These mechanisms do not explicitly involve the radiative effect of clouds.

On the other hand, the narrowing of equatorial ascending and cloudy regions corresponds to the expansion of dry radiator fins in the tropics³⁶, causing a greater longwave radiative loss to space. On the global mean, the atmospheric energy constraint requires increased latent heating to balance the enhanced atmospheric LWC. The increase of precipitation occurs primarily over the tightened convective zones near the equator, creating an intensified hydrological cycle with a 'wet get wetter and dry get drier' spatial pattern²⁵. In addition, the direct response to increasing CO₂ could strengthen the subsidence over subtropical oceans and cause a further decrease of precipitation there³⁷, exacerbating the moisture and precipitation contrast between the climatologically wet tropics and dry subtropical regions. How the thermodynamically driven narrowing of the ITCZ interacts with the decrease of high cloud cover to govern global-mean precipitation change and the intermodel spread of hydrological sensitivity remains elusive.

In this study, we provide compelling evidence that the magnitude of the THA is closely related to the magnitude of the tropical high cloud shrinkage in response to surface warming across CMIP5 models. The latter drives the model differences in atmospheric LWC rate and thus global-mean precipitation sensitivity. We also show that the intermodel spreads in the interannual changes of the Hadley Circulation, high CF, OLR and precipitation per unit surface warming are highly correlated with those on the centennial timescale. As >70% of the models analysed here underestimate the interannual OLR and precipitation sensitivities, we infer that most CMIP5 models underestimate the hydrological sensitivity under global warming.

Results

Coupling between tropical circulation and high cloud changes.

The longwave radiative control on the global-mean precipitation change leads to high correlations between global-mean dP/dT_s and $dLWC/dT_s$ across the models on both interannual and centennial timescales (Supplementary Fig. 1), while the intermodel spread in global-mean $dLWC/dT_s$ is primarily contributed by the spread in $dOLR/dT_s$ (see Supplementary Information). As high clouds have greater impact on atmospheric column LWC rate than clouds in the lower and middle troposphere³⁸ and the across-model spread in global-mean $dOLR/dT_s$ is largely driven by that in the tropics (20°S–20°N) (Supplementary Fig. 2), we focus on the tropical-mean high CF change. The high clouds refer to the clouds with tops at or above 440 hPa and their fractions are computed using a weighted average of high CFs under the maximum and random overlap assumptions (see Methods section and Supplementary Fig. 3).

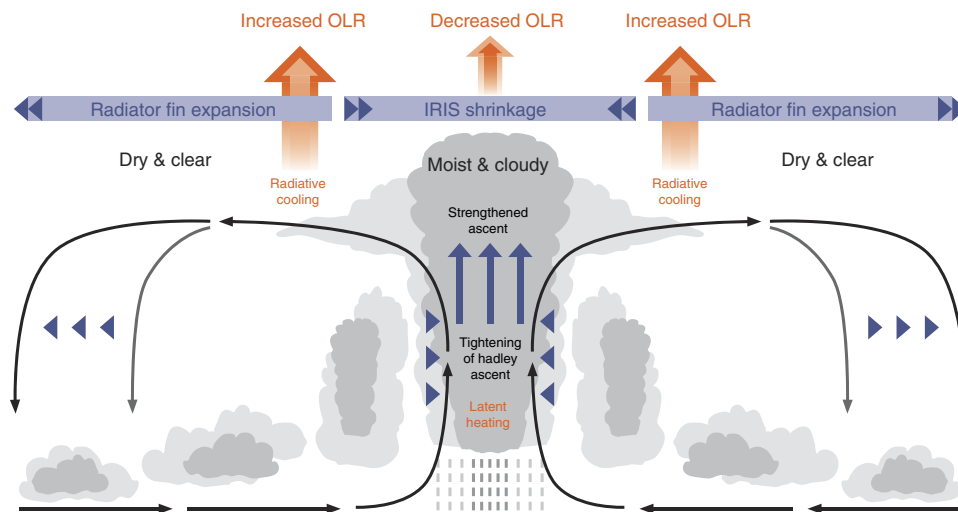


Figure 1 | A schematic of model simulated changes in the Hadley Circulation and tropical clouds along with the OLR and precipitation changes in a warmer climate. Black arrows mark the climatological Hadley Circulation with ascents near the equator and descents in the subtropics. Blue triangles indicate the poleward expansion of the descent zone and equatorward contraction of the ascending branch of the Hadley Circulation under global warming. The blue upward arrows indicate the strengthening of ascending motion over the equatorial tropics, where precipitation increases. The light and dark grey shadings of clouds correspond to the mean cloud distributions in the present and future climate, respectively, highlighting the rise of cloud top and the decrease of high cloud cover over the equatorial tropics and the reduction of low cloud amount in the subtropics. The higher cloud top causes decreased OLR over the equator, while the decrease of high cloud cover leads to increased OLR away from the equator. The schematic is based on multimodel-mean climate model simulations in response to increasing CO_2 (refs 29,30).

Shown in Fig. 2a and b, when the tropics is warmer on the interannual and centennial timescales, large-scale ascent strengthens and high CF increases over the deep tropics (10°S – 10°N), but the opposite happens at the margins of convective zones. The increase of high clouds over the deep tropics is offset by the decrease of high clouds outside 10°S and 10°N , creating a rather small net change on the tropical means (Fig. 2c,d). On the tropical mean, most models produce negative regressions of high CF onto tropical-mean T_s (Fig. 2c,d). This is in stark contrast to the high cloud and T_s correlations on the local scale, which are mostly positive over the tropical oceans (Supplementary Fig. 4). Obviously, the interactions between high clouds and surface temperature do not occur just locally; instead, remote influence through tropical circulation change must be taken into account. It is known that high clouds are usually associated with upward motion, shown by the similar spatial patterns of vertical velocity and high CF regressions onto tropical-mean T_s (Supplementary Fig. 5). We propose that the THA is the most pertinent property of the circulation change that is linked to the decrease of tropical-mean high CF in response to surface warming.

To reveal the magnitude of the tightening, the change of the areal fraction of upward velocity at 250 hPa over 20°S – 20°N (F_w) per degree of surface warming (dF_w/dT_s) is calculated using the monthly model outputs for both interannual variations and the centennial changes (see Methods section). Then, we examine the relationship between the intermodel spread in dF_w/dT_s and that in the tropical-mean dCF/dT_s (Fig. 2c,d). The temperature-mediated dF_w/dT_s is obtained as the regression slope of annual mean of monthly percentage of ascending areas within the tropics against the annual-mean tropical-mean T_s in each model's abrupt4 $\times \text{CO}_2$ experiment, and its correlation with the temperature-mediated dCF/dT_s is shown in Supplementary Fig. 6a.

We found that $\sim 90\%$ of the models (19 out of 21) produce a reduction of the tropical ascending area in response to increasing tropical-mean T_s (dF_w/dT_s being negative), consistent with the prediction from basic thermodynamics²⁴. Moreover, the magnitudes of interannual and centennial dF_w/dT_s across the

models are positively correlated with the changes of the width of the ascending branch of the Hadley Cell, define by the upward zonal-mean vertical velocity at 250 hPa (Supplementary Fig. 7). Although the weakening of the Walker Circulation may be an important component in the tropical circulation change on the interannual and centennial timescales³⁹, the THA appears to play a significant role in determining the tropical-mean upward mass flux change.

While most climate models simulate the THA, the magnitudes of the tightening differ substantially among the models. The intermodel spreads in the magnitudes of the circulation tightening and the high cloud shrinkage are well correlated for interannual variability and under global warming (Fig. 2c,d and Supplementary Fig. 6a). The models with a greater contraction of ascending areas tend to have a larger decrease of high cloud cover, and vice versa. Figure 2 and Supplementary Fig. 6a are clear manifestations of the intimate coupling between the THA and tropical high CF change in CMIP5 models. The across-model differences in the interannual sensitivities represent the diversity in the internal model physics that govern atmospheric circulation and cloud responses under the same prescribed observed sea surface temperature (SST) variations, while the across-model differences in the centennial sensitivities may include the effects of different SST warming patterns in the coupled simulations in addition to the different model physical parameterizations. It is expected that the large-scale circulation changes in the models are sensitive to convective parameterizations^{40,41}. Because of the close relation between the circulation and cloud changes, model parameters that directly modify mass fluxes, for example, the entrainment rate in convective parameterizations, may have an important role in altering upper level cloud cover, as alluded to in a few earlier modelling studies^{41,42}. Thus, constraining circulation-sensitive model physical parameters would likely help to reduce the across-model spread in high cloud amount. Note that the explained across-model variance in dCF/dT_s by the tightening index is up to 42% ($R = 0.65$ for the 21 models on the long-term rates as CNRM_cm5 and INM_cm4 are missing RCP4.5 CF outputs). This is understandable as many other model

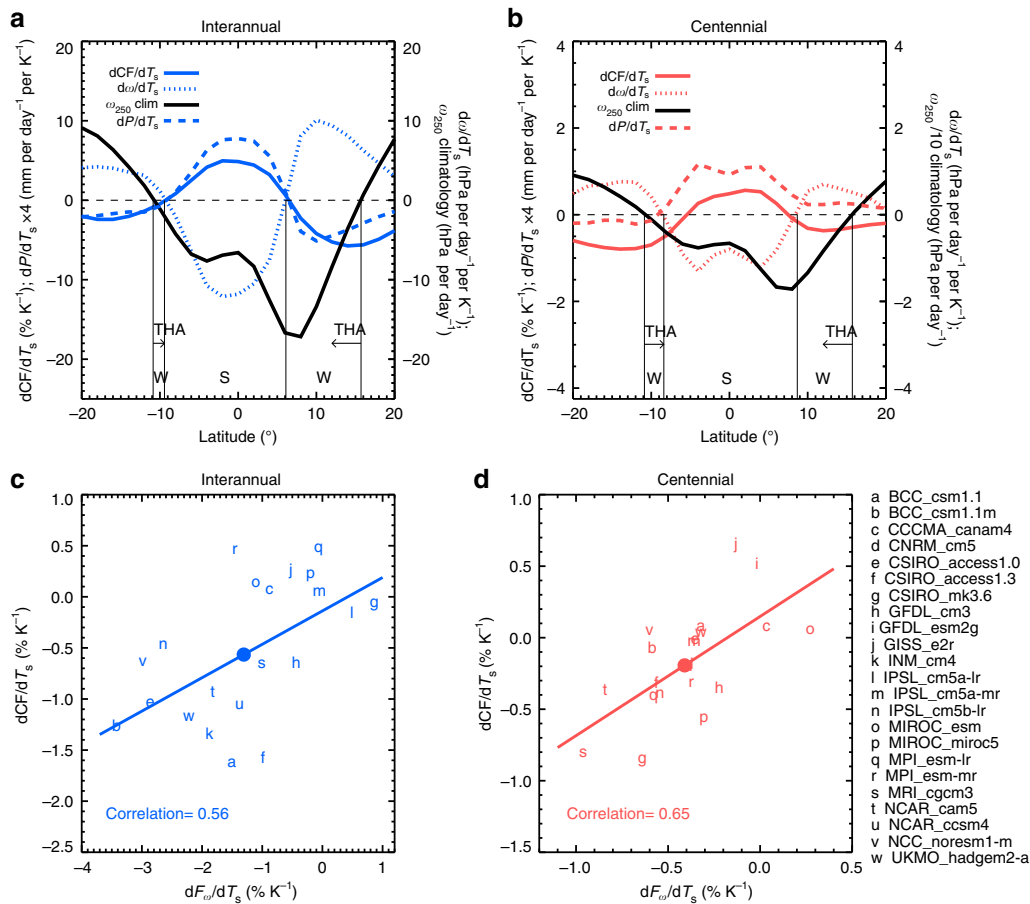


Figure 2 | Relationship between tropical circulation and high CF sensitivities to surface warming. (a) Interannual and (b) centennial multimodel-mean zonal-mean high CF (solid curves), precipitation (dashed curves) and vertical pressure velocity at 250 hPa (ω_{250} , signed negative for ascending motion, dotted curves) changes per degree of tropical-mean (20°S–20°N) surface temperature increase. The multiyear-mean ω_{250} is shown in black solid curves. S and W indicate the strengthening and weakening segments of the Hadley ascent, and THA marks the tightening of Hadley ascent, defined by the weakening of upward motion at the flanks of the intensifying equatorial ascent. (c) Interannual and (d) centennial tropical-mean high CF change per unit surface warming dCF/dT_s scattered against the change of the tropical ascending area fraction per unit surface warming dF_{ω}/dT_s for 21 CMIP5 models. The tropical ascending area is defined by $\omega_{250} < 0 \text{ Pa s}^{-1}$. Each model is represented by a lowercase letter. Multimodel means are marked in solid coloured circles. The least-squares linear regression lines and correlation coefficients between the x-axis and y-axis variables are shown.

deficiencies could affect the simulations of upper tropospheric CF. For example, the crude parameterizations of ice cloud microphysics⁴³ as well as poor representation of El Niño Southern Oscillation variability in the coupled simulations may also contribute to the different tropical circulation and cloud responses.

The remarkable resemblance between the interannual and centennial circulation and CF relations suggest that similar physical processes may be at work on both timescales. We note that the interannual and centennial sensitivities to surface warming are considered in a very simplistic way in this study: only the sensitivities to tropical-mean T_s anomalies are analysed, regardless of the spatial patterns of SST warming. As the reduction of convective mass flux and the decrease of upper level clouds could happen under uniform SST warming based on fundamental thermodynamics^{20,24}, we speculate that the similarity between the interannual and centennial circulation and cloud relations may primarily result from the tropical-wide warming, common to both variabilities. However, as the climate models tend to produce an El Niño-like anomalous warming under the projected increase of greenhouse gases⁴⁴, it is not clear how much the SST warming patterns play a role in the similar interannual and centennial relations. On the other hand, it is

evident that El Niño is not a surrogate for global warming as the interannual and centennial sensitivities are different for each model, suggesting that factors beyond the tropical-mean T_s anomalies affect the circulation and cloud changes.

As schematized in Fig. 1, the THA plays a central role in the dynamic and radiative controls on the precipitation change in response to surface warming. The large model spread in the extent of tightening is therefore a unique indicator for the model diversity in the global-mean precipitation change, confirmed by a strong negative correlation between the model spreads in centennial dF_{ω}/dT_s and dP/dT_s ($R = -0.65$ for 23 models; Supplementary Fig. 8), and somewhat weaker interannual correlation (figure not shown). The coupled circulation and high cloud amount changes would also feedback onto T_s , but this is not the interest of this study.

The narrowing of tropical convective areas takes place simultaneously with the strengthening of equatorial ascent over the climatologically heavily precipitating regions, that is, the wet area. Thus, we expect the extent of the narrowing, dF_{ω}/dT_s , would also be correlated with the magnitude of the precipitation increase over the wet area. We define the wet area as the grid boxes with monthly mean rain rates in the highest 15% of all tropical rain rates within 20°S–20°N. The corresponding threshold monthly

rain rate is ~ 4 mm per day in all CMIP5 models. The changes of the averaged rain rate for the wet area (P_{wet}) from the twentieth century to the twenty-first century normalized by the tropical-mean T_s change are computed for each model. We find that the model spread in the centennial dP_{wet}/dT_s is negatively correlated to the model spread in dF_{ow}/dT_s ($R = -0.52$ for 23 models; Supplementary Fig. 8) with a steeper slope than that for the linear fitting between dF_{ow}/dT_s and the global-mean dP/dT_s . This implies that the models with a stronger tightening would have a more severe ‘wet get wetter’ response under global warming than the models with a weaker tightening. This would have profound implications for regional extreme weather, floods and water resources.

Dominance of high CF change in LWC. The relationships between simulated tropical-mean (20°S – 20°N) high CF and OLR sensitivities to T_s across the models are displayed in Fig. 3. The intermodel spread in dCF/dT_s is correlated with $dOLR/dT_s$ at $R = -0.77$ for interannual (excluding the outlier MRI_cgcm3 model) and $R = -0.71$ for centennial. The temperature-mediated $dOLR/dT_s$ and dCF/dT_s are also correlated with $R = -0.71$ (Supplementary Fig. 6b). The model MRI_cgcm3 has an exceptionally large interannual $dCRE_{\text{lw}}/dT_s$ not related to its dCF/dT_s , probably because its prognostic ice crystal number concentration decreases significantly with surface warming in the present-day simulation⁴⁵. Thus, this model is excluded when calculating the correlation coefficient in Fig. 3a.

A greater decrease in tropical high cloud cover leads to a greater loss of longwave radiation at the TOA. The intermodel spreads in dCF/dT_s on both timescales are significantly correlated with the spreads in $dOLR_{\text{clr}}/dT_s$ and $dCRE_{\text{lw}}/dT_s$ (Supplementary Fig. 9). The decrease of high cloud amount reduces the cloud longwave warming effect on the Earth-atmosphere system, enlarging the dry and clear areas through which lower tropospheric thermal emissions escape to space and enhancing the negative longwave radiative feedback. However, we found that the intermodel spread in dCF/dT_s is not a primary contributor to the spread in ECS because other feedback processes such as the shortwave cloud feedbacks from low-level clouds might overcome the radiative effects of high clouds and the shortwave effects of high cloud changes tend to cancel their longwave effects

(Supplementary Fig. 10). Although the strongly negative correlations between the model spreads in dCF/dT_s and $dOLR/dT_s$ are consistent with our existing knowledge, they stress the predominance of high cloud coverage in driving the model diversity in the longwave radiative feedback and thus global-mean precipitation sensitivity. Other factors, such as cloud top height, cloud emissivity, cloud optical thickness and upper tropospheric water vapour, all could influence the rate of OLR change with surface temperature and contribute to the model differences in the short- and long-term longwave radiative feedback strength. Our analysis shows that the model differences in the tropical-mean high CF sensitivity to surface warming account for ~ 50 – 60% of the across-model variances of $dOLR/dT_s$ for interannual and centennial variations. In comparison, the model differences in the rate of upper troposphere water vapour change with surface temperature have a relatively small contribution to the intermodel spread in $dOLR/dT_s$ (see Supplementary Information).

In Fig. 3, the observed dCF/dT_s and $dOLR/dT_s$ on the interannual timescale averaged over 20°S – 20°N using the best available satellite data sets are marked in comparison with the modelled rates. Owing to different instrument cloud detection limitations, the observed tropical-mean high CF sensitivities vary from -2.4 to $-1.4\% \text{K}^{-1}$ (Supplementary Fig. 11 and Supplementary Table 2), which are similar to the unnormalized values reported in Lindzen *et al.*¹⁹ based on daily cirrus CF over the Western Pacific but ~ 10 times smaller than the normalized $-22\% \text{K}^{-1}$ for the original iris effect¹⁹. Although various satellite data sets produce different magnitudes of dCF/dT_s , the values are all negative, that is, tropical-mean high cloud cover tends to decrease when surface temperature increases. We note that the interannual CF sensitivity includes the cloud response to the increase of tropical-mean T_s , as well as the response to the change of SST shape. Using different temporal periods or removing strong El Niño events in the time series yields somewhat different dCF/dT_s but does not affect the results qualitatively. These satellite observations suggest there exists a mechanism for the tropical high cloud shrinkage on the interannual timescale.

We recognize that accurate evaluations of the simulated high CF variations with observations would require utilizing satellite

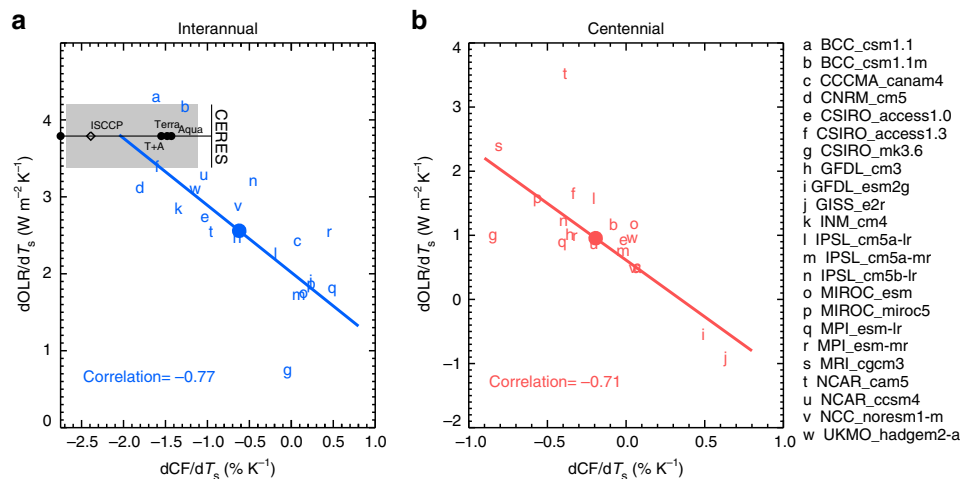


Figure 3 | Relationship between tropical high CF and OLR sensitivities to surface warming. (a) Interannual and (b) centennial tropical-mean OLR change per unit surface warming $dOLR/dT_s$ scattered against tropical-mean high CF change per unit surface warming dCF/dT_s for 21 CMIP5 models. Each model is represented by a lowercase letter. Multimodel means are marked in solid coloured circles. The least-squares linear regression lines and correlation coefficients between the x-axis and y-axis variables are shown. The observed dCF/dT_s from multiple satellite sensors along with the observed $dOLR/dT_s$ from CERES EBAF are shown in black symbols in **a**. The grey-shaded area marks the uncertainties of the observed data, based on 95% confidence interval of the regression slope between deseasonalized CERES EBAF OLR and HadCRUT4 T_s and the range of the observed dCF/dT_s from the satellite data used.

simulators in each model. Therefore, the observed dCF/dT_s values are used here mainly to aid the interpretation of the biases in modelled longwave radiative feedback. Compared to the observed dCF/dT_s , the multimodel mean of $-0.7\% K^{-1}$ is significantly lower than the observations. The observed $dOLR/dT_s$ based on the Clouds and the Earth's Radiant Energy System (CERES) data from March 2000 to October 2015 is $3.8 \pm 0.4 W m^{-2} K^{-1}$, which is more robustly measured by satellite instruments than dCF/dT_s . Using the combined radiative fluxes from the Earth Radiation Budget Experiment (ERBE) for 1995–1999 and CERES for 2000–2005, we obtain a similar rate of $dOLR/dT_s$ at $4.0 \pm 0.5 W m^{-2} K^{-1}$. Both rates are consistent with previous studies^{18,46,47}. All models except BCC_csm1.1 and BCC_csm1.1m underestimate the magnitude of $dOLR/dT_s$ as found previously^{18,47}. If a model simulates a strong decrease of high CF with surface warming, its $dOLR/dT_s$ would be relatively large based on the negative correlations shown in Fig. 3. The observed CF and OLR sensitivities are within the scatter of the individual models relative to the linear regression line in Fig. 3a.

Consistent with muted high cloud shrinkage in the models, the simulated upper tropospheric moistening with surface warming is generally overestimated (Supplementary Fig. 12). However, using the water vapour radiative kernels^{48,49}, we find the multimodel-mean moist bias of $2\% K^{-1}$ in the upper troposphere would contribute a low bias on the order of $0.05 W m^{-2} K^{-1}$ to $dOLR/dT_s$, only a small fraction of the total model biases. And the intermodel spread in $dOLR/dT_s$ is not significantly correlated with that of the upper tropospheric moistening rate (see Supplementary Information).

Constraining the hydrological sensitivity using observations.

Last, we explore the implications of the low biases in the tropical high cloud shrinkage and longwave radiative feedback on the model predictions of future global-mean precipitation change. Here we use the temperature-mediated global-mean precipitation change per degree of surface warming derived from the linear regression between annual-mean precipitation and surface temperature in the abrupt $4 \times CO_2$ experiments as a 'clean' measure of the hydrological sensitivity^{1,3–5} (Supplementary Table 1). This measure excludes the fast precipitation response to direct CO_2 forcing, which is independent of T_s change^{1,2}. The centennial precipitation change per unit surface warming is also analysed, representing the end of the twenty-first century total precipitation change relative to the present-day climate given transient CO_2 increase and other radiative forcings (Supplementary Fig. 13).

As shown in Fig. 4a, a strong correlation exists between the interannual tropical-mean $dOLR/dT_s$ and the interannual global-mean dP/dT_s ($R=0.68$ for 23 models), consistent with the longwave radiative control on precipitation. The approximate linear relation between the interannual $dOLR/dT_s$ and dP/dT_s across the 23 models allows us to obtain an estimate of the interannual dP/dT_s constrained by the observed tropical-mean $dOLR/dT_s$, independently of the interannual dP/dT_s derived directly from the the linear regression between the Global Precipitation Climatology Project (GPCP) global-mean precipitation and the Hadley Centre and Climate Research Unit 4.4.0.0 surface temperature over the period of 1995–2005 (Supplementary Fig. 14).

Given the observed tropical-mean $dOLR/dT_s$ at $3.8 \pm 0.4 W m^{-2} K^{-1}$, we estimate the OLR-constrained interannual global-mean dP/dT_s to be within 1.0 and $2.6 W m^{-2} K^{-1}$ at the 95% confidence level (marked by grey horizontal lines in Fig. 4a) (see Supplementary Information). Combined with the interannual precipitation sensitivity from GPCP at $2.7 \pm 0.9 W m^{-2} K^{-1}$ (marked by the open black circle with grey

shading in Fig. 4a), the likely interannual global-mean dP/dT_s at the 95% confidence level is between 1.8 and $2.6 W m^{-2} K^{-1}$, determined by the overlapped range for the OLR-constrained and GPCP-derived precipitation sensitivities.

Furthermore, we find that the interannual global-mean dP/dT_s is highly correlated with the temperature-mediated dP/dT_s ($R=0.64$ for 21 available models) and the centennial dP/dT_s ($R=0.55$ for 20 available models; Supplementary Fig. 13). The approximately similar correlations imply that the intermodel spread in the centennial dP/dT_s is largely driven by the model differences in the temperature-mediated dP/dT_s , although the fast response to direct CO_2 forcing reduces the magnitudes of the temperature-mediated dP/dT_s by varying extent. Similar correlations are found between interannual and temperature-mediated $dOLR/dT_s$ or between interannual and centennial $dOLR/dT_s$ (Supplementary Fig. 15), but not for dF_{ov}/dT_s or dCF/dT_s , probably because the circulation and CF sensitivities are more dependent on the mean states and the temporal scales of variabilities. Hence, we focus on applying observed $dOLR/dT_s$ and dP/dT_s as emergent constraints on the predictions of long-term precipitation sensitivity.

Using the observation-based interannual dP/dT_s to identify the better performing models, we find only five models that simulate the observed interannual dP/dT_s within the 95% confidence level (Fig. 4b). All the five models have temperature-mediated dP/dT_s higher than the ensemble mean of $2.26 W m^{-2} K^{-1}$ ($2.6\% K^{-1}$) from the 21 models. The mean temperature-mediated dP/dT_s from the five models is $2.35 W m^{-2} K^{-1}$ ($2.7\% K^{-1}$). Their across-model standard deviation is $0.08 W m^{-2} K^{-1}$, 66% smaller than the standard deviation from the 21 models. Compared to the original values of the temperature-mediated hydrological sensitivity from 2.1 to $3.2\% K^{-1}$, the observation-constrained predictions of the hydrological sensitivity range from 2.6 to $2.9\% K^{-1}$, all in the higher end of the model ensemble.

For centennial dP/dT_s , the mean of the five better-performing models is slightly higher than the mean of all models; however, there is a large spread among the five models, indicating the model diversity in the fast response to direct CO_2 forcing. Nevertheless, the statistically significant positive correlation between the 20 models' interannual and centennial dP/dT_s suggests that the models that simulate a stronger interannual dP/dT_s tend to produce a greater dP/dT_s at the end of the twenty-first century. Using the value of $dOLR/dT_s$ from the combined ERBE and CERES data for the period of 1995–2005 yields a slightly higher upper limit of interannual OLR-constrained dP/dT_s , but it does not materially change our conclusions.

The upward shift of ensemble mean dP/dT_s is opposite to the effects of constraining models' solar absorption by water vapour⁵. It clearly demonstrates that climate models have compensating errors in simulating the interactions between circulation, cloud, radiation and precipitation. Emergent constraints on precipitation change based on a particular aspect of the hydrological processes may be biased. It is important to examine the precipitation changes from multiple perspectives and apply a variety of observational metrics to evaluate the models and guide model improvements.

Discussion

By analysing the intermodel spreads in precipitation sensitivity and associated dynamic, thermodynamic and radiative quantities, we show that the model differences in simulating the extent of the tightening of the ascending branch of the Hadley Circulation in a warmer climate are highly correlated with the model spreads in high CF sensitivity, the rate of longwave radiative cooling and global-mean precipitation change for both interannual variability and long-term climate change. The dynamic and radiative processes are intimately coupled to produce the intensification

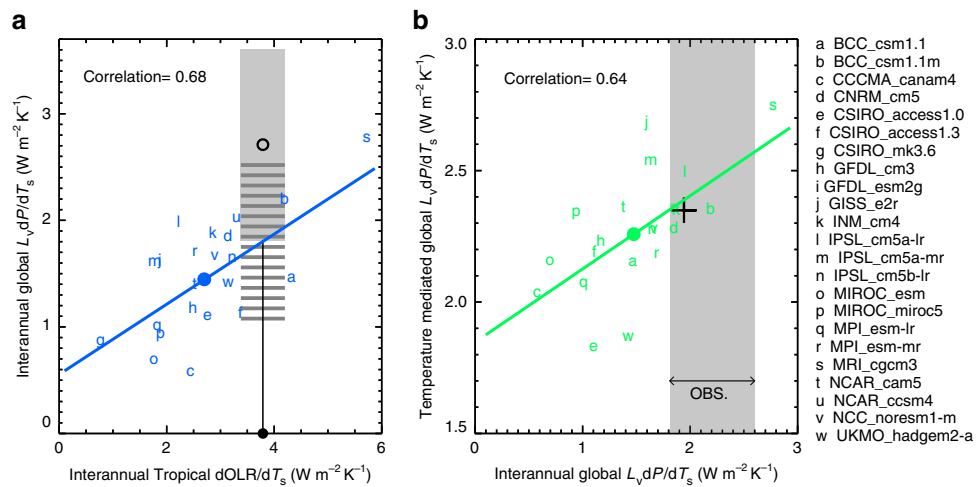


Figure 4 | Emergent constraint on the hydrological sensitivity. (a) Interannual global-mean precipitation change per unit surface warming $L_v dP/dT_s$ scattered against interannual tropical-mean OLR change per unit surface warming $dOLR/dT_s$ for 23 CMIP5 models. The CERES $dOLR/dT_s$ (the black dot on the x-axis) with the 95% confidence level marked horizontally in grey shading. The GPCP global-mean $L_v dP/dT_s$ is shown in open black circle with the 95% confidence level marked vertically in grey shading. The CERES OLR-constrained $L_v dP/dT_s$ estimate based on the linear regression relation between the interannual $L_v dP/dT_s$ and $dOLR/dT_s$ is marked by grey horizontal lines with their length corresponding to the 95% confidence level. The overlapped range of the GPCP and CERES OLR-constrained $L_v dP/dT_s$ is used as the best estimate of observational interannual $L_v dP/dT_s$ with the 95% confidence level. (b) The temperature-mediated global-mean $L_v dP/dT_s$ scattered against the interannual $L_v dP/dT_s$ for 21 CMIP5 models. The best estimate of the observational interannual $L_v dP/dT_s$ is marked in grey shading. Each model is represented by a lowercase letter. The ensemble model means for the 21 models and the five better-performing models are shown in solid circles and black cross, respectively. The least-squares linear regression lines and correlation coefficients between the x-axis and y-axis variables are shown.

of the hydrological cycle. The narrowing and strengthening of the equatorial ascent is a key contributor in this feedback loop on both timescales. Constraining circulation-sensitive model parameters would be one effective pathway towards improving upper level cloud simulations, critical for reducing the uncertainties of hydrological sensitivity, although the high cloud amount changes have no simple relation with the models' climate sensitivity. Moreover, as circulation and cloud changes are highly coupled, model parameterizations that directly affect high cloud formation and evolution could also impact large-scale circulation. Thus, understanding the complex interactions between circulation and cloud changes would be of utmost importance for accurate climate change predictions.

Our analysis reveals that the relative magnitudes of the OLR and precipitation sensitivities to surface warming vary consistently across the models on the interannual and centennial timescales, allowing us to constrain the likely range of future precipitation change based on short-term observations. However, there are noticeable differences between the interannual and centennial sensitivities for each model as El Niño is not a surrogate for global warming. In particular, the effects of the SST warming patterns on the tightening of Hadley ascent and the tropical high cloud shrinkage merit further investigation.

Using the observed interannual tropical-mean $dOLR/dT_s$ and global-mean dP/dT_s to constrain the models, we can effectively reduce the model spread in the hydrological sensitivity by a factor of 3. The models that agree with the observed interannual dP/dT_s at the 95% confidence level predict that the global-mean precipitation would increase with T_s at a rate between 2.6 and 2.9 K^{-1} , all on the upper half of the CMIP5 model ensemble. The underestimates of the high cloud shrinkage with surface warming in most CMIP5 models also have profound implications for the regional precipitation change, whereas the magnitude of the intensification of extreme precipitation in climatologically heavily precipitating regions might likely be on the higher end of current model predictions.

Methods

Models. We employ 23 climate model simulations driven by the observed SST and the corresponding coupled model simulations from historical and RCP4.5 scenarios (Supplementary Table 1) available at the CMIP5 archive (<http://cmip-pcmdi.llnl.gov/cmip5/>). Two models (CNRM_cm5 and INM_cm4) do not have CF outputs in the historical runs so that only 21 models are used where applicable. The available abrupt4 \times CO₂ and piControl experiments for these models are also analysed. The ECS values for the models are taken from Su *et al.*²⁹ and Mauritsen and Stevens¹⁸.

We are interested in both short-term variabilities and long-term climate changes. The short-term variabilities refer to the interannual variations in present-day climate. We use the simulations driven by observed SST so that only atmospheric processes are taken into account (similar to the Atmospheric Model Inter-comparison Project, AMIP). Previous studies offer some promise that the interannual variations may bear imprints of long-term climate feedbacks^{50–53}, although caveats exist⁵³. The short-term sensitivity of each variable to surface warming is derived from the regression slope of the deseasonalized anomalies against the T_s anomalies. A 5-month running mean is applied to all monthly anomalies to reduce noises. We analyse the interannual relations for the decade of 1995–2005, consistent with Mauritsen and Stevens¹⁸. This is the period without large volcanic activities and the correlation between precipitation and surface temperature on the interannual timescale is less scattered than the previous periods⁵⁴. Similar analyses were performed using the coupled historical simulations, but the relationships between high CF, radiation and precipitation were much noisier in the coupled simulations than the uncoupled AMIP simulations.

The long-term climate changes refer to the centennial differences of global or tropical averaged quantities between the 25-year climatological means in the twenty-first and twentieth centuries (the 2074–2098 averages from the RCP4.5 runs minus the 1980–2004 averages from the historical runs) normalized by the differences in global-mean or tropical-mean T_s . Note that such long-term sensitivities include both fast responses to direct CO₂ forcing and slow temperature-mediated responses. The temperature-mediated precipitation changes per unit surface warming derived from the abrupt4 \times CO₂ experiments are treated as the 'clean' measure of the hydrological sensitivity and are based on the linear regression slopes between the annual-mean global-mean precipitation anomalies against T_s anomalies in the first 150 years of the simulations. The annual-mean anomalies are with respect to the 21-year averaged climatological values from the piControl experiments centred on the correspond year in the abrupt4 \times CO₂ experiments, consistent with DeAngelis *et al.*⁵. The temperature-mediated tropical-mean dF_{sw}/dT_s , dCF/dT_s and $dOLR/dT_s$ are computed similarly. We note that our definitions of sensitivities consist of the responses to surface warming and their feedbacks onto T_s . The coupled relationships, rather than one-way cause and effect, are applicable to all the sensitivities presented in this study.

In this study, high clouds pertain to the clouds with tops at or above 440 hPa altitude, regardless of cloud optical thickness. The CMIP5 models output CF at models' vertical levels and only limited models produce satellite simulator CFs. Therefore, we compute total high CF for each model using the same approach to obtain sufficient number of models for both short- and long-term analyses. As the maximum overlap assumption tends to underestimate the total CF while the random overlap assumption tends to overestimate the total CF (Supplementary Fig. 3), we use weighted averages of the high CFs computed under the maximum and random overlap assumptions separately. We found that the weights of 2/3 for maximum and 1/3 for random overlap CFs yield a close match in both total amount and temporal variations to the International Satellite Cloud Climatology Project (ISCCP) simulator CFs on the tropical averages (20°S–20°N) in three AMIP models that output ISCCP simulator CF results (Supplementary Fig. 3). Hence, the same weighted averages of maximum and random overlap CFs are used to represent the total high CFs in all models. Our conclusions are not sensitive to the exact weights for either overlap assumption.

For high CF and OLR sensitivities, we focus on the tropics between 20°S and 20°N, consistent with Mauritsen and Stevens¹⁸ because this latitudinal band encompasses deep convective clouds and their anvils, central to the debate involving the iris hypothesis^{19,55,56}. For precipitation, global mean and tropical wet area mean are examined.

Observations. The Hadley Centre and Climate Research Unit surface temperature 4.4.0.0 data set (<http://www.metoffice.gov.uk/hadobs/hadcrut4>) is used⁵⁷. We use radiative fluxes measured by the CERES and various satellite retrievals of high CF in the past 15 years (from March 2000 to October 2015) in relation to T_s to obtain observational estimates of short-term longwave radiative feedback and high cloud sensitivity to T_s (Supplementary Table 2). The CERES-EBAF version 2.8 data⁵⁸ can be obtained at <http://ceres.larc.nasa.gov>. The tropical OLR sensitivity to for the 1995–2005 period was examined using the combined ERBE⁵⁹ and CERES data. While the CERES radiative flux measurements at the TOA have high accuracy and stability⁶⁰, the high CF retrievals from different satellite missions have considerable uncertainties due to instrument sensitivity and difficulties in identifying cloud top height for nadir-viewing passive sensors. The length of satellite record also affects the derived CF sensitivities (Supplementary Table 2). The observed high CF measurements include those from the Collection 6 MODerate-resolution Imaging Spectroradiometer (MODIS) on Terra (from July 2002 to June 2010) and Aqua (from July 2002 to June 2015) satellites⁶¹ (http://dx.doi.org/10.5067/MODIS/MOD08_M3.006), Atmospheric Infrared Sounder (AIRS) on Aqua⁶² (from September 2002 to December 2013; <https://disc.gsfc.nasa.gov/AIRS>) and joint CloudSat/CALIPSO (Cloud-Aerosol Lidar and Infrared Pathfinder Satellite Observations) retrieval^{63,64} (from June 2006 to June 2015; <http://www.cloudsat.cira.colostate.edu/data-products/level-2b/>) as well as the bias-corrected high CF data from the ISCCP^{65,66} (from January 1995 to December 2005; https://eosweb.larc.nasa.gov/project/isccp/isccp_d2_table). The Terra MODIS CF retrieval after 2010 is found to have a high bias over ocean and thus not included in the regressions⁶⁷. The joint CloudSat/CALIPSO high CF retrieval is based on the 2B-CLDCLASS-LIDAR product, which averages CALIPSO lidar measurements to CloudSat footprints and combines with CloudSat measurements to compute the ratio of cloud pixels with cloud top at or above 440 hPa to the total number of measurements. The AIRS effective CF accounts for both cloud areal coverage and cloud emissivity; hence, its variability may deviate from that of actual CF.

The observed precipitation during the period of 1995 to 2005 from the GPCP⁶⁸ (https://precip.gsfc.nasa.gov/gpcp_v2.2_data.html) and the CPC (Climate Prediction Center) Merged Analysis of Precipitation⁶⁹ (<https://www.esrl.noaa.gov/psd/data/gridded/data.cmap.html>) data sets are analysed. The CPC (Climate Prediction Center) Merged Analysis of Precipitation precipitation sensitivity was not used for the observed precipitation sensitivity due to the large uncertainty (Supplementary Fig. 14). To better understand the model biases in longwave radiative feedback, combined upper tropospheric water vapour measurements from Aqua AIRS (440–250 hPa; <https://disc.gsfc.nasa.gov/AIRS>) and Aura Microwave Limb Sounder (250–100 hPa)⁷⁰ (https://mls.jpl.nasa.gov/products/h2o_product.php) are examined and compared to the model results (Supplementary Fig. 12). The uncertainty of the Microwave Limb Sounder/AIRS water vapour data is about 25% in the upper troposphere.

For satellite measurements, we use their respective available periods closest to the period of 1995 to 2005. Deseasonalized monthly anomalies are used to calculate the sensitivities to T_s . A 5-month running mean is performed to achieve a meaningful correlation for the interannual variabilities. The derived interannual sensitivities to T_s and the periods used for each data set are listed in Supplementary Table 2. The variabilities indicate the 95% confidence intervals on the regression slopes.

The observed dCF/dT_s from various satellite sensors exhibit large differences (Supplementary Fig. 11). The ISCCP bias-corrected high CF shows the steepest decrease per unit surface warming, $-2.39 \pm 0.29\% K^{-1}$. The Terra and Aqua MODIS high CFs yield negative rates of -1.48 and $-1.43\% K^{-1}$, respectively, while the combined Terra and Aqua MODIS measurements produce a decrease of high cloud cover at the rate of $-1.55\% K^{-1}$. The AIRS effective high CF varies with surface temperature at the rate of $-0.68 \pm 0.24\% K^{-1}$; however, as this represents combined effects of cloud emissivity and cloud coverage, we do not

include the AIRS results in Fig. 3a. The joint CloudSat/CALIPSO daytime retrieval of high CF from 2006 to 2015 yields a rate of $-0.88 \pm 2.41\% K^{-1}$ (not shown in Fig. 3a). The large uncertainty is partly due to the different instrument sensitivity and limited spatial sampling of the active sensors. The CloudSat radar operates only in the daytime after April 2011 and the quality of the data may be adversely affected. Excluding the data after April 2011 results in a very short record and poor correlation between the CF and T_s anomalies.

Data and code availability. The data generated from the public accessible CMIP5 model outputs and satellite observations and the code used during the study are available on request from the authors. Please contact the corresponding author at Hui.Sui@jpl.nasa.gov.

References

- Lambert, F. H. & Webb, M. J. Dependency of global mean precipitation on surface temperature. *Geophys. Res. Lett.* **35**, L16706 (2008).
- Andrews, T., Forster, P. M., Boucher, O., Bellouin, N. & Jones, A. Precipitation, radiative forcing and global temperature change. *Geophys. Res. Lett.* **37**, L14701 (2010).
- Andrews, T., Forster, P. M. & Gregory, J. M. A surface energy perspective on climate change. *J. Clim.* **22**, 2557–2570 (2009).
- Fläschner *et al.* Understanding the intermodal spread in global-mean hydrological sensitivity. *J. Clim.* **29**, 801–817 (2016).
- DeAngelis, A. M., Qu, X., Zelinka, M. D. & Hall, A. An observational radiative constraint on hydrologic cycle intensification. *Nature* **528**, 249–253 (2015).
- Allen, M. R. & Ingram, W. J. Constraints on future changes in climate and the hydrologic cycle. *Nature* **419**, 224–232 (2002).
- O’Gorman, P. A., Allan, R. P., Byrne, M. P. & Previdi, M. Energetic constraints on precipitation under climate change. *Surv. Geophys.* **33**, 585–608 (2012).
- Stephens, G. L. & Ellis, T. D. Controls of global-mean precipitation increases in global warming GCM experiments. *J. Clim.* **21**, 6141–6155 (2008).
- Stephens, G. L. & Hu, Y. Are climate-related changes to the character of global-mean precipitation predictable? *Env. Res. Lett.* **5**, 025209 (2009).
- Previdi, M. Radiative feedbacks on global precipitation. *Env. Res. Lett.* **5**, 025211 (2010).
- Trenberth, K. E., Fasullo, J. T. & Kiehl, J. Earth’s global energy budget. *Bull. Am. Meteorol. Soc.* **90**, 311–324 (2009).
- Stephens, G. L. *et al.* An update on Earth’s energy balance in light of the latest global observations. *Nat. Geosci.* **5**, 691–696 (2012).
- Allan, R. P. Examination of relationships between clear-sky longwave radiation and aspects of the atmospheric hydrological cycle in climate models, reanalyses, and observations. *J. Clim.* **22**, 3127–3145 (2009).
- Takahashi, K. Radiative constraints on the hydrological cycle in an idealized radiative-convective equilibrium model. *J. Atmos. Sci.* **66**, 77–91 (2009).
- Pendergrass, A. G. & Hartmann, D. L. Global-mean precipitation and black carbon in AR4 simulations. *Geophys. Res. Lett.* **39**, L01703 (2012).
- Richter, I. & Xie, S. P. Muted precipitation increase in global warming simulations: a surface evaporation perspective. *J. Geophys. Res.* **113**, D24118 (2008).
- O’Gorman, P. A. & Schneider, T. The hydrological cycle over a wide range of climates simulated with an idealized GCM. *J. Clim.* **21**, 3815–3832 (2008).
- Mauritsen, T. & Stevens, B. Missing iris effect as a possible cause of muted hydrological change and high climate sensitivity in models. *Nat. Geosci.* **8**, 346–351 (2015).
- Lindzen, R. S., Chou, M.-D. & Hou, A. U. Does the Earth have an adaptive infrared iris? *Bull. Am. Meteorol. Soc.* **82**, 417–432 (2001).
- Bony, S. *et al.* Thermodynamic control of anvil cloud amount. *Proc. Natl Acad. Sci. USA* **113**, 8927–8932 (2016).
- Hartmann, D. L. & Larson, K. An important constraint on tropical cloud-climate feedback. *Geophys. Res. Lett.* **29**(20): 1951–1954 (2002).
- Zelinka, M. D. & Hartmann, D. L. Why is longwave cloud feedback positive? *J. Geophys. Res. Atmos.* **115**, D16–D117 (2010).
- Taylor, K. E., Stouffer, R. J. & Meehl, G. A. An overview of CMIP5 and the experiment design. *Bull. Am. Meteorol. Soc.* **93**, 485–498 (2012).
- Held, I. M. & Soden, B. J. Robust responses of the hydrological cycle to global warming. *J. Clim.* **19**, 5686–5699 (2006).
- Chou, C. & Neelin, J. D. Mechanisms of global warming impacts on regional tropical precipitation. *J. Clim.* **17**, 2688–2701 (2004).
- Neelin, J. D., Chou, C. & Su, H. Tropical drought regions in global warming and El Niño teleconnections. *Geophys. Res. Lett.* **30**, 2275 (2003).
- Su, H. & Neelin, J. D. Teleconnection mechanisms for tropical Pacific descent anomalies during El Niño. *J. Atmos. Sci.* **59**, 2694–2712 (2002).
- Su, H. & Jiang, J. H. Tropical clouds and circulation changes during the 2006–07 and 2009–10 El Niños. *J. Clim.* **26**, 399–413 (2013).
- Su, H. *et al.* Weakening and strengthening structures in the Hadley Circulation change under global warming and implications for cloud response and climate sensitivity. *J. Geophys. Res.* **119**, 5787–5805 (2014).

30. Lau, W. K.-M. & Kim, K.-M. Robust Hadley Circulation changes and increasing global dryness due to CO₂ warming from CMIP5 model projections. *Proc. Natl Acad. Sci. USA* **112**(12): 3630–3635 (2015).
31. Byrne, M. P. & Schneider, T. Narrowing of the ITCZ in a warming climate: physical mechanisms. *Geophys. Res. Lett.* **43**, 11,350–11,357 (2016).
32. Fu, Q., Johanson, C. M., Wallace, J. M. & Reichler, T. Enhanced mid-latitude tropospheric warming in satellite measurements. *Science* **312**, 1179 (2006).
33. Seidel, D. J., Fu, Q., Randel, W. J. & Reichler, T. J. Widening of the tropical belt in a changing climate. *Nat. Geosci.* **1**, 21–24 (2008).
34. Tao, L., Hu, Y. & Liu, J. Anthropogenic forcing on the Hadley Circulation in CMIP5 simulations. *Clim. Dyn.* **46**, 3337–3350 (2016).
35. Wodzicki, K. R. & Rapp, A. D. Long-term characterization of the Pacific ITCZ using TRMM, GPCP, and ERA-Interim. *J. Geophys. Res. Atmos.* **121**, 3153–3170 (2016).
36. Pierrehumbert, R. T. Thermostats, radiator fins, and the local runaway greenhouse. *J. Atmos. Sci.* **52**, 1784–1806 (1995).
37. He, J. & Soden, B. A re-examination of the projected subtropical precipitation decline. *Nat. Clim. Change* **7**, 53–57 (2016).
38. Pendergrass, A. G. & Hartmann, G. The atmospheric energy constraint on global-mean precipitation change. *J. Clim.* **27**, 757–768 (2014).
39. Vecchi, G. A. & Soden, B. J. Global warming and the weakening of the tropical circulation. *J. Clim.* **20**, 4316–4340 (2007).
40. Bernstein, D. N. & Neelin, J. D. Identifying sensitive ranges in global warming precipitation change dependence on convective parameters. *Geophys. Res. Lett.* **43**, 5841–5850 (2016).
41. Del Genio, A. D. *et al.* Constraints on cumulus parameterization from simulations of observed MJO events. *J. Clim.* **28**, 6419–6442 (2015).
42. Zhao, M. An investigation of the connections among convection, clouds, and climate sensitivity in a global climate model. *J. Clim.* **27**, 1845–1862 (2014).
43. Elsaesser, G., Del Genio, A., Jiang, J. & van Lier-Walqui, M. An improved convective ice parameterization for the NASA GISS Global Climate Model and impacts on cloud ice simulation. *J. Clim.* **30**, 317–336 (2017).
44. Long, S.-M., Xie, S.-P. & Liu, W. Uncertainty in tropical rainfall projections: atmospheric circulation effect and the ocean coupling. *J. Clim.* **29**, 2671–2687 (2016).
45. Kawai, H., Koshiro, T., Webb, M., Yukimoto, S. & Tanaka, T. Cloud feedbacks in MRI-CGCM3. *CAS/JSC WGNE Research Activities in Atmospheric and Oceanic Modelling/WMO* **45**, 7.11–7.12 (2015).
46. Trenberth, E. T., Fasullo, J. T., Dell, C. O. & Wong, T. Relationships between tropical sea surface temperature and top-of-atmosphere radiation. *Geophys. Res. Lett.* **37**, L03702 (2010).
47. Lindzen, R. S. & Choi, Y.-S. On the observational determination of climate sensitivity and its implications. *Asia-Pacific J. Atmos. Sci.* **47**, 377 (2011).
48. Soden, B. J. *et al.* Quantifying climate feedbacks using radiative kernels. *J. Clim.* **21**, 3504–3520 (2008).
49. Shell, K. M., Kiehl, J. T. & Christine, A. S. Using the radiative kernel technique to calculate climate feedbacks in NCAR's Community Atmospheric Model. *J. Clim.* **21**, 2269–2282 (2008).
50. Dessler, A. E. & Wong, S. Estimates of the water vapor feedback during the El Niño Southern Oscillation. *J. Clim.* **22**, 6404–6412 (2009).
51. Dessler, A. E. A determination of the cloud feedback from climate variations over the past decade. *Science* **330**, 1523–1527 (2010).
52. Zhou, C., Zelinka, M. D., Dessler, A. E. & Klein, S. A. The relationship between interannual and long-term cloud feedbacks. *Geophys. Res. Lett.* **42**, 10,463–10,469 (2015).
53. Takahashi, H., Su, H. & Jiang, J. H. Water vapor changes under global warming and the linkage to present-day interannual variabilities in CMIP5 models. *Clim. Dyn.* **47**, 3673–3691 (2016).
54. Su, H. & Neelin, J. D. The scatter in tropical average precipitation anomalies. *J. Clim.* **16**, 3966–3977 (2003).
55. Hartmann, D. L. & Michelsen, M. L. No evidence for iris. *Bull. Am. Meteorol. Soc.* **83**, 249–254 (2002).
56. Su, H. *et al.* Variations of tropical upper tropospheric clouds with sea surface temperature and implications for radiative effects. *J. Geophys. Res.* **113**, D10211 (2008).
57. Morice, C. P., Kennedy, J. J., Rayner, N. A. & Jones, P. D. Quantifying uncertainties in global and regional temperature change using an ensemble of observational estimates: the HadCRUT4 dataset. *J. Geophys. Res.* **117**, D08101 (2012).
58. Loeb, N. G. *et al.* Advances in understanding top-of-atmosphere radiation variability from satellite observations. *Surv. Geophys.* **33**, 359–385 (2012).
59. Barkstrom, B. R. The Earth Radiation Budget Experiment (ERBE). *Bull. Am. Meteorol. Soc.* **65**, 1170–1185 (2009).
60. Loeb, N. G., Rutan, D. A., Kato, S. & Wang, W. Observing interannual variations in Hadley Circulation atmospheric diabatic heating and circulation strength. *J. Clim.* **27**, 4139–4158 (2014).
61. Baum, B. A. *et al.* MODIS Cloud-Top Property Refinements for Collection 6. *J. Appl. Meteorol. Climatol.* **51**, 1145–1163 (2012).
62. Kahn, B. H. *et al.* The atmospheric infrared sounder version 6 cloud products. *Atmos. Chem. Phys.* **14**, 399–426 (2014).
63. Sassen, K., Wang, Z. & Liu, D. The global distribution of cirrus clouds from CloudSat/CALIPSO measurements. *J. Geophys. Res.* **113**, D00A12 (2008).
64. Wang, Z., Vane, D., Stephens, G. & Reinke, D. Level 2 combined radar and lidar cloud scenario classification product process description and interface control document. *JPL Rep.* **22**, http://www.cloudsat.cira.colostate.edu/sites/default/files/products/files/2B-CLDCLASS-LIDAR_PDICD.P_R04.20120522.pdf (2012).
65. Norris, J. R. & Evan, A. T. Empirical removal of artifacts from the ISCCP and PATMOS-x satellite cloud records. *J. Atmos. Ocean. Technol.* **32**, 691–702 (2015).
66. Li, K.-F. *et al.* An analysis of high cloud variability: imprints from the El Niño–Southern Oscillation. *Clim. Dyn.* **48**, 447–457 (2017).
67. Lyapustin, A. *et al.* Scientific impact of MODIS C5 calibration degradation and C6+ improvements. *Atmos. Meas. Technol.* **7**, 4353–4365 (2014).
68. Huffman, G. J., Adler, R. F., Bolvin, D. T. & Gu, G. Improving the Global Precipitation Record: GPCP Version 2.1. *Geophys. Res. Lett.* **36**, L17808 (2009).
69. Xie, P. & Arkin, P. A. Global precipitation: a 17-year monthly analysis based on gauge observations, satellite estimates, and numerical model outputs. *Bull. Am. Meteorol. Soc.* **78**, 2539–2558 (1997).
70. Jiang, J. H. *et al.* Evaluation of cloud and water vapor simulations in CMIP5 climate models using NASA ‘A-Train’ satellite observations. *J. Geophys. Res.* **117**, D14105 (2012).

Acknowledgements

We acknowledge the funding support from NASA NEWS, AST, MAP, NDOA and NSF. We greatly appreciate Michael Wong in making the schematic figure. We thank Shang-min Long, Ryan Stanfield and Jung-Min Park for assistance in some parts of the auxiliary analyses. We thank Drs Brian Soden and Karen Shell for providing the radiative kernel functions. We appreciate helpful discussions with Drs Chris Bretherton, Anthony DeAngelis, Feifei Jin, Xin Qu and Shang-Ping Xie. We thank three anonymous reviewers for insightful suggestions. This work was performed at Jet Propulsion Laboratory, California Institute of Technology, under contract with NASA.

Author contributions

H.S. designed the analysis and wrote the paper. H.S., J.H.J., T.J.S. and C.Z. analysed the CMIP5 model simulations and observations. Q.Y. analysed the MODIS cloud fraction data. Z.W. and L.H. analysed the joint CloudSat/CALIPSO cloud fraction retrieval. Y.-S.C. analysed the combined ERBE-CERES data. J.D.N., G.L.S. and Y.L.Y. provided suggestions for the analysis and comments on the manuscript. Everyone edited the manuscript.

Additional information

Supplementary Information accompanies this paper at <http://www.nature.com/naturecommunications>

Competing interests: The authors declare no competing financial interests.

Reprints and permission information is available online at <http://npq.nature.com/reprintsandpermissions/>

How to cite this article: Su, H. *et al.* Tightening of tropical ascent and high clouds key to precipitation change in a warmer climate. *Nat. Commun.* **8**, 15771 doi: 10.1038/ncomms15771 (2017).

Publisher's note: Springer Nature remains neutral with regard to jurisdictional claims in published maps and institutional affiliations.



Open Access This article is licensed under a Creative Commons Attribution 4.0 International License, which permits use, sharing, adaptation, distribution and reproduction in any medium or format, as long as you give appropriate credit to the original author(s) and the source, provide a link to the Creative Commons license, and indicate if changes were made. The images or other third party material in this article are included in the article's Creative Commons license, unless indicated otherwise in a credit line to the material. If material is not included in the article's Creative Commons license and your intended use is not permitted by statutory regulation or exceeds the permitted use, you will need to obtain permission directly from the copyright holder. To view a copy of this license, visit <http://creativecommons.org/licenses/by/4.0/>

© The Author(s) 2017