

# *A systematic review of the effects of early separation on dairy cow and calf health*

Article

Published Version

Creative Commons: Attribution-Noncommercial-No Derivative Works 4.0

Open Access

Beaver, A., Meagher, R. K., von Keyserlingk, M. A. G. and Weary, D. M. (2019) A systematic review of the effects of early separation on dairy cow and calf health. *Journal of Dairy Science*, 102 (7). pp. 5784-5810. ISSN 0022-0302 doi: 10.3168/jds.2018-15603 Available at <https://centaur.reading.ac.uk/80562/>

It is advisable to refer to the publisher's version if you intend to cite from the work. See [Guidance on citing](#).

To link to this article DOI: <http://dx.doi.org/10.3168/jds.2018-15603>

Publisher: American Dairy Science Association

All outputs in CentAUR are protected by Intellectual Property Rights law, including copyright law. Copyright and IPR is retained by the creators or other copyright holders. Terms and conditions for use of this material are defined in the [End User Agreement](#).

[www.reading.ac.uk/centaur](http://www.reading.ac.uk/centaur)

**CentAUR**

Central Archive at the University of Reading

Reading's research outputs online



## Invited review: A systematic review of the effects of early separation on dairy cow and calf health

Annabelle Beaver,<sup>1</sup> Rebecca K. Meagher,<sup>2</sup> Marina A. G. von Keyserlingk,<sup>1</sup> and Daniel M. Weary<sup>1\*</sup>

<sup>1</sup>Animal Welfare Program, Faculty of Land and Food Systems, University of British Columbia, 2357 Main Mall, Vancouver, BC, V6T 1Z4 Canada

<sup>2</sup>School of Agriculture, Policy and Development, University of Reading, Whiteknights, PO Box 217, Reading, Berkshire, RG6 6AH, United Kingdom

### ABSTRACT

Concern from the public is growing regarding early cow-calf separation, yet proponents of this practice maintain that artificial rearing is critical for cow and calf health. Early separation is assumed to reduce the risk of transfer of pathogens from dam to neonatal calf, but a wide range of health benefits associated with extended cow-calf contact has also been documented. The aim of this systematic review was to report and synthesize conclusions from the literature on dairy cow and calf health in conventional rearing versus cow-calf contact systems. Peer-reviewed, published manuscripts, written in English, directly comparing dairy cow or calf health in artificial versus suckling systems, were eligible for inclusion. We conducted 7 targeted searches using Web of Science to identify key literature on important health conditions. The resulting manuscripts underwent a 4-step appraisal process, and further manuscripts were sourced from reference lists. This process resulted in a final sample of 70 articles that addressed cow and calf health. Sufficient literature was available to assess mastitis in cows, and scours, cryptosporidiosis, Johne's disease, pneumonia, immunity, and mortality in calves. The results for cryptosporidiosis, pneumonia, immunity, and mortality were mixed, with some differences between studies likely attributable to flawed comparisons between cohorts. Overall, the articles addressing calf scours and mastitis pointed to beneficial or no effects of suckling. The studies addressing Johne's disease did not find cow-calf contact to be a significant risk factor. In conclusion, the scientific peer-reviewed literature on cow and calf health provides no consistent evidence in support of early separation.

**Key words:** weaning, nursing, cow-calf rearing, udder health, maternal contact

### INTRODUCTION

On many commercial dairy farms, it is routine practice to separate the calf from the dam within 24 h of calving (de Passillé et al., 2008; Stěhulová et al., 2008). Proponents of early separation consider it economically beneficial (due to an increase in saleable milk) and ethically preferable (as it is thought to preclude formation of a maternal bond that becomes progressively more difficult to break; Flower and Weary, 2003).

One oft-cited rationale for immediate cow-calf separation is the health benefit ostensibly afforded by artificial calf rearing. For example, Faubert and Litvinsky (2000) claim that this practice reduces the risk of *Cryptosporidium parvum* infections. Muskens et al. (2003) make a similar claim for Johne's disease, and Dauschies and Najdrowski (2005) for eimeriosis. However, such literature does not always cite evidence to corroborate these assertions. The concern over disease transmission stems from the agammaglobulinemic state of the neonatal calf and its heightened susceptibility to disease during this time. Artificial feeding of calves is thought to allow better control of colostrum quality and quantity and thus improve transfer of maternal immunoglobulins to the calf. Moreover, the dam's fecal coliform count increases by up to  $10^7$  cfu during the periparturient period (Pelan-Mattocks et al., 2000), leading to a concern that calves permitted to remain in the calving area are at an increased risk of exposure to pathogens (McGuirk, 2008).

Despite these concerns, health benefits of prolonged contact have been documented for calves and cows, ranging from increased immunoglobulin absorption from colostrum (Stott et al., 1979), to decreased mortality rates for calves (Alvarez et al., 1980), to reduced risk of mastitis for cows (Walsh, 1974). Thus, allowing the cow and calf to remain in contact presents a mosaic of purported health benefits and risks, for which there is a lack of consensus. The aim of the present review is to provide a critical and systematic evaluation of the scientific literature on the health implications of cow-calf contact versus artificial rearing; our compan-

Received August 26, 2018.

Accepted November 6, 2018.

\*Corresponding author: dan.weary@ubc.ca

ion paper (Meagher et al., 2019) presents the results of a parallel review on the effects of cow-calf contact on measures of behavior, welfare, and productivity. A synthesis of conclusions from the literature is required to offer a measure of resolution to this debate.

## MATERIALS AND METHODS

### Inclusion and Exclusion Criteria

Articles were eligible for inclusion if they were peer-reviewed, written in English, complete (e.g., conference abstracts were excluded), available in full-text form, and contained a direct investigation of the effects of cow-calf contact or suckling on dairy cow or calf health. Articles were removed if not based upon original data (e.g., review articles or literature-based mathematical models). Any manuscript published after the completion of the literature search (May 18, 2018) was not included. Exclusion and inclusion criteria for the systematic review were developed a priori and agreed upon by all co-authors.

### Search Strategy

Systematic searches were conducted using the Web of Science (WoS) database, which allows for integration of Boolean operators (i.e., AND, OR, NOT) to string together words or phrases, as well as wildcard truncations (denoted as \*) to designate a range of possible word forms. The \$ symbol was employed to account for alternate spellings (e.g., American versus British English). All searches contained the following fixed set: (“cow-calf” OR “cow/calf” OR “dam-calf” OR “dam/calf” OR “dam rearing” OR “reared by the dam” OR “reared by cows” OR “suckling system\*” OR “mother rearing” OR “reared by the mother” OR “contact of calves with adult\*” OR “leav\* calves with dam\*” OR “stay\* with the dam” OR “remain\* with the dam” OR “kept with the dam”) AND (nurs\* OR suckl\* OR separation OR contact OR “risk factor\*”) AND (calf OR calves).

Seven specific searches were conducted, each containing targeted terms addressing the most relevant calf and cow health conditions: *scours* (scour\* OR diarr\*), *Cryptosporidiosis* (cryptosporidi\*), *Johne’s disease* (Johne’s OR paratuberculosis), *pneumonia* (pneumonia OR respiratory), *immunity* (immunity OR “passive transfer”), *health and mortality* (disease\* OR infection\* OR health OR morbidity OR mortality), and *mastitis* (mastitis OR “intramammary infection\*” OR “udder health”). Several additional search terms were tested but yielded no results meeting the predefined exclusion criteria; these terms included “E. coli,” *Escherichia*,

*Salmonella*, *Heidelberg*, *Clostridium*, *Campylobacter*, “enteric bacteria,” coccidi\*, BVD, “bovine viral diarr\*,” rotavirus, coronavirus, neospor\*, bluetongue, diphtheria, “*Mycoplasma bovis*,” “*Mycobacterium bovis*,” Schmallenberg, sarcocystis, anaplasma\*, cowdria, BLV, “bovine leukemia virus,” BIV, “bovine immunodeficiency virus,” BoHV-1, BHV-1, “bovine herpes virus,” PIV-3, PIV3, “parainfluenza virus,” “*Mannheimia haemolytica*,” “*Pasteurella multocida*,” “*Histophilus somni*,” “*Arcanobacterium pyogenes*,” “retained placenta,” “placental retention,” “fetal membrane,” metritis, “uterine health,” “uterine disease,” “milk fever,” hypocalcemia, DD, “digital dermatitis,” mange, and mites. The selection of these search terms was based upon expert opinion, in addition to several review articles on pathogenesis and health conditions in dairy cows and calves: Mulligan et al., 2006; Muktar et al., 2015; and Francoz et al., 2015.

### Selection Process

Results from the 7 unique searches were pooled, and duplicate results were excluded. Articles were then selected based upon a 4-step screening and appraisal process:

**Phase 1.** Conference proceedings and articles written in a language other than English were removed. The titles of the remaining articles were scanned to filter out irrelevant results (e.g., literature clearly pertaining to animals other than the dairy cow and calf).

**Phase 2.** Abstracts were evaluated to identify and remove additional articles not relevant to the topic of dairy cow or calf health, disease, infection, or mortality (e.g., articles addressing dairy-herd economics).

**Phase 3.** Reference lists were mined for additional relevant manuscripts. If full texts were not available online or in the University of British Columbia’s library system, they were requested via interlibrary loan, ResearchGate, or personal contacts. The reference lists of papers added at this stage were also considered as a source for further manuscripts

**Phase 4.** Finally, review articles were removed, and full texts of the remaining papers were read in detail. Articles containing experimental research were excluded if the experiment itself did not address the question of cow-calf contact (but rather reviewed literature on the issue as part of a larger discussion). Mathematical models were excluded if parameters relating to cow-calf contact were sourced from other literature, or if insufficient information pertaining to real-world data collection was provided to permit recalculation of model parameters.

The articles remaining at this stage were included in the systematic review, and in multiple sections if they

described more than one relevant effect. To provide a comprehensive overview of the literature, no additional restrictions were placed upon publication year, study type, sample size, or overall quality; however, a quality assessment of the included manuscripts was conducted and is reported in the Appendix.

### Data Extraction

From each manuscript, where applicable, we have recorded authorship, publication year, country, breed of cattle under study, dam-calf contact type (e.g., restricted suckling or unrestricted contact), contact duration, sample size, the amount and type of milk provided to artificially reared calves, the author's conclusion, and the direction of this conclusion. Inter-observer reliability for data extraction (for all categories except for authorship and publication year) was tested on a random subset of 20 articles, with a result of 100% agreement.

We also present diagnostic test information, relative risks (RR), odds ratios, hazard ratios, and the associated 95% confidence intervals (CI), where available. These statistics were provided in many of the articles addressing mastitis, Johne's disease, and calf cryptosporidiosis. In an attempt to achieve consistency, we calculated the RR (or prevalence ratio in the case of cross-sectional studies) and CI for articles in these 3 categories if not reported by the authors. This was only possible when sufficient information was provided to permit calculation. The following formulae were applied:

$$RR = [a/(a + b)]/[c/(c + d)], \quad [1]$$

where a, b, c, and d correspond to number of controls with the disease, number of disease-free controls, number of experimental animals with the disease, and number of disease-free experimental animals, respectively.

$$CI = e^{\ln(RR) \pm 1.96\{SE[\ln(RR)]\}}, \quad [2]$$

$$\text{where } SE(\ln RR) = \sqrt{\frac{1}{a} + \frac{1}{c} - \frac{1}{a+b} - \frac{1}{a+c}}.$$

## RESULTS AND DISCUSSION

Results from the 4-step screening and appraisal process detailed in the Materials and Methods section are shown in Figure 1.

Briefly, WoS returned 125 unique papers pertaining to cow-calf separation and health. The titles of these papers were scanned, and 45 papers were subsequently

excluded (7 of these were written in another language, and 38 concerned beef cattle or other species). Following an assessment of the abstracts (n = 80), an additional 32 papers were excluded. At this stage, 61 articles were sourced from the reference lists of the remaining papers, and from the reference lists of newly included papers. In the final exclusion stage, a further 39 papers were removed because they were review articles (n = 12), did not directly compare cow or calf health in relation to cow-calf contact (n = 25), or were literature-based mathematical models (n = 2). In total, 70 articles (comprised of 29 single-herd studies and 41 multi-herd studies) were selected for inclusion; 9 of these were included in 2 of the specific sections below, and 4 were included in 3 sections.

The final manuscripts included in this systematic review were authored between 1971 and 2016. The studies originated from 6 continents and 30 countries, most commonly North America (n = 25: United States = 15; Canada = 5; Mexico = 5) and Europe (n = 20: Central Europe = 5; Scandinavia = 6; Western Europe = 8; Southern Europe = 1). Additionally, 4 studies originated from South America, 4 from East Africa, 5 from Asia (Middle East = 2; South East Asia = 3), and 3 from Oceania (Australia = 2; New Zealand = 1). These statistics include only those studies that specified regional information.

The single-herd studies included between 2 and 7 relevant groups with a total sample size of between 4 and 464 animals. The multi-herd studies included between 3 and 2,915 herds with the total number of animals ranging from 240 to 32,622.

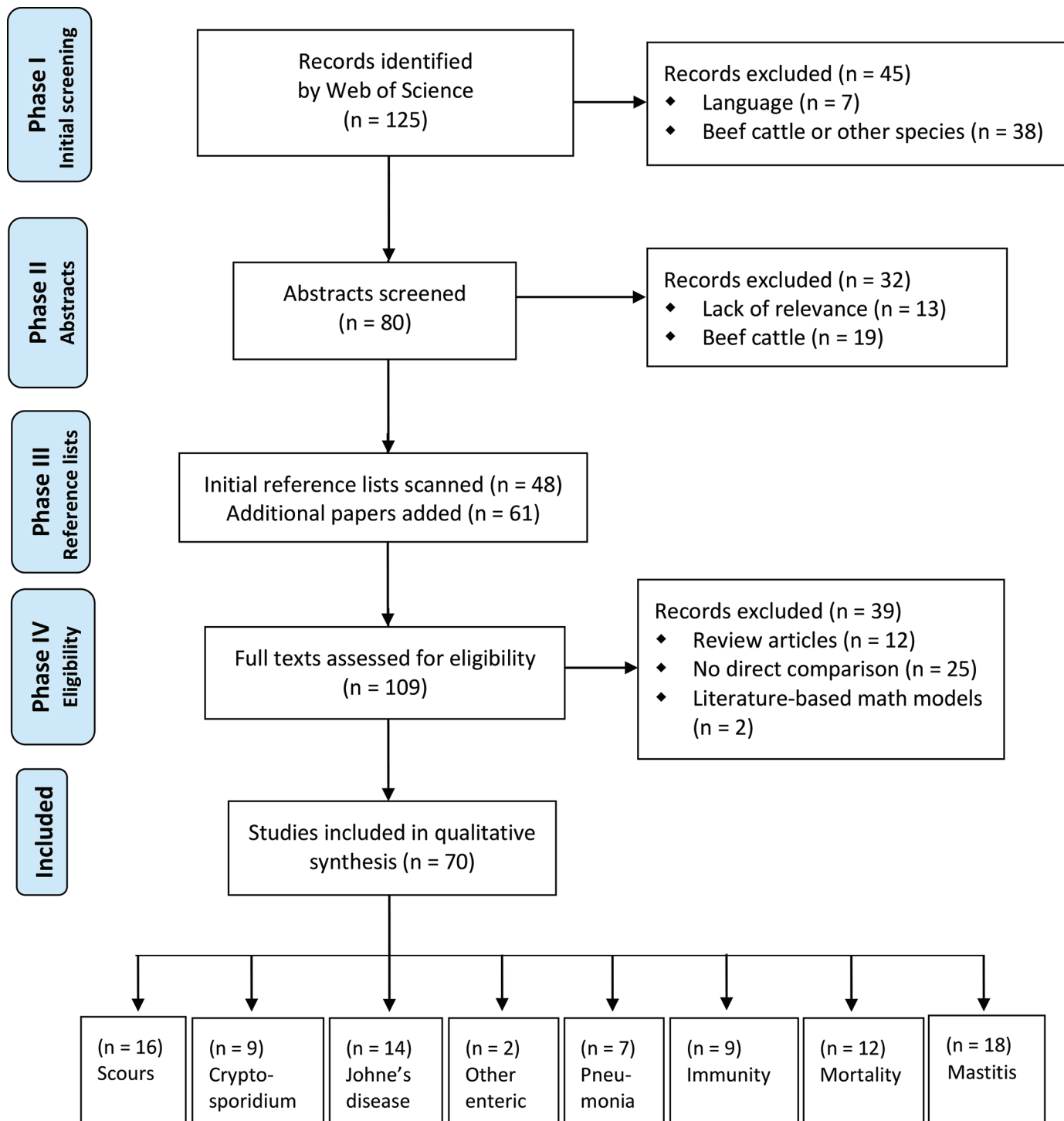
### Calf Health

**Scours and Enteric Pathogens.** Of the 70 included articles, 16 (11 single herd and 5 multi-herd studies) addressed dairy-calf scours of unspecified or multiple etiologies. Nine additional articles specifically addressed calf cryptosporidiosis, predominantly infection with *C. parvum*. One of these studies represented a single-herd evaluation of prevalence, and the other 8 were multi-herd trials (between 11 and 248 herds) that paired questionnaires on management practices with cross-sectional or repeated fecal samples from individual calves. Results for scours are reported in Table 1 and results pertaining to *Cryptosporidium* are reported in Table 2. Two additional articles addressed other enteric pathogens, namely *Campylobacter*, giardia, *Eimeria*, rotavirus, and coronavirus.

As shown in Table 1, several studies demonstrated benefits of cow-calf contact on scours (Carias and Vaccaro, 1984; Nocek et al., 1984; Rajala and Castrén, 1995; Weary and Chua, 2000; Boonbrahm et al., 2004a;

Wagenaar and Langhout, 2007). Conversely, 2 studies (Svensson et al., 2003; Roth et al., 2009) reported a greater risk of scours in dam-reared animals. Roth et al. (2009) hypothesized that the higher incidence in nurs-

ing calves could be explained by the increased quantity of milk consumed by these animals, rather than by infectious causes. Indeed, Wagenaar and Langhout (2007) reported that the type of scouring sometimes observed



**Figure 1.** Flowchart depicting the manuscript screening and appraisal process. Note that summing the studies included in the qualitative synthesis in each subsection yields 87 studies, rather than 70. This discrepancy results from the inclusion of 9 studies in 2 specific sections and 4 studies in 3 specific sections. A deletion of the duplicates results in 70 unique studies.

Table 1. Manuscripts comparing scours in calves with and without a period of extended maternal contact<sup>1</sup>

Study	Country	Breed <sup>2</sup>	Contact type	Contact duration	Contact duration (controls)	Type of milk (controls)	Amount of milk (controls)	n (calves)	No. of herds (no. of groups)	Conclusion
Carias and Vaccaro, 1984	Venezuela	HF, Brown Swiss	Free contact (foster)	9 wk	72 h	Whole milk by bucket	3 L for 3 wk, 2 L for next 2 wk, 1 L for next 1 wk	24	1 (2)	Incidence of diarrhea was 2.5× lower in calves that nursed
Nocek et al., 1984	Not specified	HF	Free contact	Not specified	Not specified	Varied	Varied	159	1 (7)	Suckling calves had better fecal consistency scores and fewer days of scours (d 5–45)
Rajala and Castrén, 1995	Finland	Ayrshire	Free contact	5 d	15–30 min	Colostrum from the dam from a nipple pail for 1st day, then whole milk by open pail	2 L at 4 h, 3 L at next 2 feedings (colostrum); 3 L 2×/d (milk)	30	1 (2)	Separated calves had 3× as many days of diarrhea compared with nursed calves
Weary and Chua, 2000	Canada	HF	Free contact	6 h, or 1 d, or 4 d	Not applicable	Colostrum by bottle for 2 d; whole milk by bucket after separation	2 L/2× per d (colostrum); 1.5 L/2× per d (milk)	27	1 (3)	Calves separated at 4 d tended to require fewer treatment days for scours compared with the 1-d or 6-h groups
Boonbrahm et al., 2004a	Thailand	HF <sup>5</sup>	Restricted suckling	3 d free contact, then 15 min (2×/d) for 80 d (postmilking)	3 d full contact	Whole milk by bucket, then concentrate at d 57	10% of BW	40	1 (2)	Higher rate of scours in artificially reared group
Wagenaar and Langhout, 2007	The Netherlands	HF	Free contact (both foster and single-suckle)	90 d	2–3 d	Bucket feeding of milk replacer or whole milk	6 kg/d	283	3 (3 per herd)	Diarrhea less frequent in suckling systems
Fallon and Harte, 1980	Not specified	HF	(Calves permitted restricted suckling of foster cows were compared with calves fed by pail or nipple in reference to scours incidence)					72	1 (3)	Diarrhea incidence not different between groups

Continued

Table 1 (Continued). Manuscripts comparing scours in calves with and without a period of extended maternal contact<sup>1</sup>

Study	Country	Breed <sup>2</sup>	Contact type	Contact duration (controls)	Contact duration (controls)	Type of milk (controls)	Amount of milk (controls)	n (calves)	No. of herds (no. of groups)	Conclusion
Curtis et al., 1988	United States	HF	(Multi-herd study with standardized check-off forms provided to producers regarding health and mortality in addition to questions pertaining to calf housing and management)					1,171	26	Risk of scours not impacted by method of colostrum feeding
Quigley et al., 1995	Not specified	Jersey	Free contact	3 d	0 d (immediate separation)	Dam's colostrum	1 L of colostrum 2×/d for 3 d	96	1 (2 relevant)	Number of days of scours did not differ by treatment
Perez et al., 1990	The Netherlands	HF, Dutch Friesian, Meuse-Rhine-Issel and cross breeds	(Multi-herd study comparing mortality in dairy calves under different managerial systems, including whether or not calves were allowed to suckle the dam)					1,037	63	No difference in the risk of developing diarrhea in calves that nursed colostrum from the dam or were fed by hand
Little et al., 1991	Ethiopia	Friesian × Boran	Restricted suckling	24 h free contact, then 5 min before milking for 14 d, 2 min before milking 2×/d until weaning (at 94 d)	24 h free contact	Dam's colostrum/milk by bucket	All of dam's milk/colostrum for 3 d, 3 L/d for 30 d, 4 L/d for 30 d, 2 L/d for 15 d, 1 L/d for 15 d until weaning at 94 d	13	1 (2)	No difference in diarrhea incidence between calves obtaining milk by restricted suckling versus bucket
Krohn et al., 1999	Denmark	HF	Free contact	4 d	None; or free contact, no suckling	Dam's colostrum by bucket	2.3 kg/2× per d	57	1 (3)	No difference in scours incidence
Franklin et al., 2003	United States	HF	Free contact	3 d	0 d (immediate separation)	Dam's colostrum by bottle for 1 d; then whole milk	2.48 L colostrum at birth, then 1.89 L at 12 h; 2 L milk 2×/d	31	1 (4)	Number of days of scours or days requiring treatment did not differ between the groups

Continued

Table 1 (Continued). Manuscripts comparing scours in calves with and without a period of extended maternal contact<sup>1</sup>

Study	Country	Breed <sup>2</sup>	Contact type	Contact duration	Contact duration (controls)	Type of milk (controls)	Amount of milk (controls)	n (calves)	No. of herds (no. of groups)	Conclusion
Lundborg et al., 2005	Sweden	Swedish Red, HF, cross-breed	[Multi-herd study including disease evaluations by farmers and veterinarians and the effect of management factors. Farms categorized based on the proportion of calves that were kept with the dam for some time after birth (0, >0 to <1, or 1)]					3,081	122	Proportion of calves that were kept with dam not associated with diarrhea risk
Roth et al., 2009	Germany	HF, cross-breed, Red Pied	Free contact, or restricted suckling	91 d full contact, or 15 min (2×/d) for 91 d premilking	None	Whole milk via automated feeder	8 L 6×/d or 8 L 2×/d	57	1 (4)	More diarrhea in dam-reared groups/no difference in number of calves treated by vet
Svensson et al., 2003	Sweden	Swedish Red, HF, cross-breed	(Multi-herd study including disease evaluations by farmers and veterinarians and questions on colostrum feeding methods)					3,081	122	Odds of severe diarrhea greater for calves that received colostrum by suckling

<sup>1</sup>Listed for each study are country, breed of cattle, type of cow-calf contact, duration of this contact, how milk or colostrum (or both) was fed to calves in the control condition (i.e., in which calves were not allowed to suckle), the amount of milk provided in this condition, the total number of calves followed, the number of herds (and groups within a herd where relevant), and the authors' conclusion and direction of effect (with + signifying a beneficial effect of suckling or cow-calf contact, - signifying a negative effect, and = representing no difference. Studies are ordered chronologically within effect direction).

<sup>2</sup>HF signifies that breed was reported as Holstein, Friesian, or Holstein-Friesian. This designation includes country-specific variants such as Danish Holstein.

<sup>3</sup>No statistical test performed, or no statistical results reported.

<sup>4</sup>Not statistically significant ( $P = 0.08$ ).

<sup>5</sup>Predominantly.

<sup>6</sup>No statistical test performed. Both cases of diarrhea were in the bucket-reared group, but the authors did not make conclusions based on this finding.

**Table 2.** Manuscripts comparing *Cryptosporidium* in calves with and without a period of extended maternal contact (at the herd level or animal level)<sup>1</sup>

Study	Country	Breed <sup>2</sup>	Study design	Groups compared (length of dam-calf contact)	n (calves)	No. of herds (groups)	Herd types	Diagnostic	Conclusion	
Kvac et al., 2006	Czech Republic	Varied	Fecal samples taken from calves in herds using either full contact or separation	Full contact for 5 d or immediate separation (with colostrum fed for 5 d followed by milk replacer)	2,056 (samples)	22	Dairy and beef	Floation-sedimentation, staining, and microscopy	Fewer <i>Cryptosporidium parvum</i> positive samples for calves raised with dams compared with individually raised calves [PR (CI) <sup>3</sup> = 0.37 (0.29–0.48) sample level] <i>C. parvum</i> infection less likely in herds where calves are housed with the dam [(OR (CI) <sup>4</sup> = 0.1 (0.04–0.30)] Time calf stayed with dam was protective against <i>C. parvum</i> infection at univariable stage [PR (CI) = 0.58 (0.39–0.86)]. No difference in multivariable stage	+
Duranti et al., 2009	Italy	Not specified	Fecal samples paired with management questionnaire	Not specified	2,024	248	Dairy, beef, and dual	Fecal ELISA and immunofluorescent assay		+
Garro et al., 2016	Argentina	Not specified	Fecal samples paired with management questionnaire	Calves grouped by contact with dam	552	27	Dairy	Acid-fast staining and microscopy		+ / =
Maldonado-Camargo et al., 1998	Mexico	HF	Fecal samples paired with interviews on management	Separation time categorized as before nursing, 2 to 12, or 13 to 24 h	512	31	Dairy	Acid-fast staining and microscopy	Whether calves received colostrum by suckling and duration of dam contact were not risk factors for calf-level <i>C. parvum</i> shedding. Suckling vs. bottle: PR (CI) = 0.88 (0.60–1.28); separation at 13–24 h vs. 2–12 h: PR (CI) = 0.97 (0.53–1.75) Time of calf separation from dam was not associated with risk of <i>C. parvum</i> infection	=
Mohammed et al., 1999	United States	Not specified	Fecal samples paired with management questionnaire	Separation time categorized as immediately, after nursing, <12, 12 to 24, >12 h, or no separation	2,943	109	Dairy	Centrifugation concentration flotation		=
Delafosse et al., 2015	France	HF, Normandie, and others	Fecal samples paired with management questionnaire	Calves grouped by ≤2, 2 to 6, 6 to 12, or >12 h of contact with dam	968	97	Dairy	Acid-fast staining and microscopy	Time calf spent with the dam not associated with <i>C. parvum</i> shedding	=
Trotz-Williams et al., 2008a	Canada	Not specified	Fecal samples paired with management questionnaire	Separation time categorized as: immediately vs. other	1,089	119	Dairy	Sucrose wet mount method	Delaying separation was associated with increased within-herd prevalence [PR (CI) = 1.5 (1.1–2.2)] at univariable stage but not at multivariable stage	= / –

**Table 2 (Continued).** Manuscripts comparing *Cryptosporidium* in calves with and without a period of extended maternal contact (at the herd level or animal level)<sup>1</sup>

Study	Country	Breed <sup>2</sup>	Study design	Groups compared (length of dam-calf contact)	n (calves)	No. of herds (groups)	Herd types	Diagnostic	Conclusion
Quigley et al., 1994	United States	Jersey	2 × 2 factorial: 2 levels of dam-calf contact, 2 individual housing types	4 d full contact or immediate separation (fed 2 L of colostrum by bottle for 1 d)	96	1 (4)	Dairy	Modified flotation technique and microscopy	Calves that nursed the dam had higher prevalence of cryptosporidium at 1 wk of age. No significant difference thereafter.
Trotz-Williams et al., 2007	Canada	Not specified	Fecal samples paired with management questionnaire	Calves grouped by ≤1 or >1 h contact with dam	990	11	Dairy	Sucrose wet mount method and microscopy	Calves left with dam for >1 h had increased risk of <i>C. parvum</i> diarrhea OR (CI) = 1.59 (1.35–1.85)

<sup>1</sup>Listed for each study are country, breed of cattle, study design, groups compared (in reference to length of cow-calf contact), total number of calves sampled, the number of herds included (and groups within herds where applicable), the type of herd, the diagnostic(s) used, and the authors' conclusion and direction of effect (with + signifying a beneficial effect of suckling or cow-calf contact, – signifying a negative effect, and = representing no difference. Studies are ordered chronologically within effect direction).

<sup>2</sup>HF signifies that breed was reported as Holstein, Friesian, or Holstein-Friesian. This designation includes country-specific variants such as Danish Holstein.

<sup>3</sup>PR (CI) = prevalence ratio (95% CI).

<sup>4</sup>OR (CI) = odds ratio (95% CI).

in suckling calves was characteristically distinct from that of bucket-fed counterparts, primarily because it did not lead to the animals dirtying their backsides. Boonbrahm et al. (2004a) found that mortality from scours and other conditions was higher in bucket-fed calves (15%) compared with dam-reared calves (0%), again suggesting a different etiology. It is now well known that high volumes of milk may contribute to looser manure in calves (see Khan et al., 2011), which need not reflect any infection. Methods of evaluating scours in calves should therefore take into account differences in fecal consistency associated with level of milk intake.

Although the balance of the research seems to point to either neutral or positive effects of dam rearing on calf scours, results are mixed with respect to *Cryptosporidium* (see Table 2). Two of the 9 included studies reported a protective effect of the dam's presence (Kvac et al., 2006; Duranti et al., 2009), 4 reported no difference (Maldonado Camargo et al., 1998; Mohammed et al., 1999; Delafosse et al., 2015; Garro et al., 2016), and the remaining 3 (Quigley et al., 1994; Trotz-Williams et al., 2007, 2008a) indicated that dam-calf contact increases the risk of infection. This lack of consensus may stem from variation in study design and outcome measurements (e.g., herd versus sample-level prevalence), in breed (dairy versus mixed dairy-beef), or in the diagnostic methods chosen. Despite the conflicting results, the collective burden of available odds ratios and risk ratios is skewed toward a protective effect of suckling.

Two papers addressed other specific enteric pathogens in relation to dam-calf contact. Klein et al. (2013) found that herds leaving calves with the dam for >1 h had a 2.6 times greater odds of testing positive for *Campylobacter* spp., and Quigley et al. (1994) noted an increased risk of *Giardia* in suckling calves, but no differences were found for *Eimeria*, rotavirus, or coronavirus; further investigation of these and other pathogens in suckling systems is needed.

**Johne's Disease.** Of the 70 articles included, 14 directly addressed the relationship between the prevalence of *Mycobacterium avium* ssp. *paratuberculosis* (MAP; the causal agent of Johne's disease) and duration of cow-calf contact. All 14 studies consisted of management questionnaires paired with serum (n = 5) or milk (n = 2) ELISA testing, unspecified ELISA testing (n = 1), bulk-milk PCR (n = 1), fecal culture (n = 1), a combination of fecal culture and serum ELISA (n = 1), or clinical case reports (n = 3). Results are shown in Table 3.

A limiting factor in many of the cross-sectional studies presented in this review is the absence of a temporal relationship between Johne's diagnosis and the imple-

mentation of management practices. However, none of the included articles were able to identify increased MAP prevalence among herds permitting cow-calf contact, even in preliminary univariable analyses (with the exception of Pillars et al., 2011). Official Johne's disease control programs frequently describe the risks associated with allowing the calf to suckle and remain within the maternity area, or directly recommend immediate separation of cow and calf following parturition; such programs include the Three Step Calf Rearing Plan of Australia (Animal Health Australia, 2016), the Voluntary Bovine Johne's Disease Control Program of the United States (USDA, 2010), and several region-specific Canadian programs [such as the Atlantic Veterinary College (2015) Johne's Disease Initiative, which deems calf nursing to be a risky practice, even within test-negative herds]. Given the lack of quantitative evidence on the value of immediate cow-calf separation, the persistence and regularity of this recommendation is surprising.

A common theme that emerged in our systematic search of this topic was the presence of unsubstantiated claims regarding MAP prevalence and cow-calf separation. An example of the dissemination of such claims within the literature is shown in Figure 2.

The type of citation scheme demonstrates how a largely unsubstantiated claim (in this case, that calves should be immediately separated from the dam to prevent Johne's disease) can achieve the status of "common knowledge" in the literature. The perpetuation of these assertions may lead to decisions such as that of Norton et al. (2009) to include "duration of dam-calf contact" in multivariable risk assessment modeling due to "biological importance," despite the variable's lack of significance at the univariable screening stage.

The hypothesis regarding biological relevance is not unfounded because calves under 6 mo of age are most susceptible to MAP infection. *Mycobacterium avium* ssp. *paratuberculosis* may be transmitted from an infected dam to calf in utero or through direct bacterial shedding into colostrum or milk; however, MAP infection occurs predominantly by means of a contaminated environment, via the fecal-oral route (Lombard, 2011). We may thus imagine that prompt calf removal could mitigate transmission. Several mathematical models (e.g., Collins and Morgan, 1991; Marcé et al., 2011) have demonstrated that removing the calf from the calving area, or minimizing the effective number of cow-calf contacts, reduces MAP prevalence, but such models are often parameterized based upon an assumption that transmission increases for calves contacting adult animals. Yet, in some herds, cow-calf separation has supplanted control strategies for which concrete evidence exists to tie the respec-

tive strategy to a reduction in MAP prevalence. For example, Wells and Wagner (2000) noted that herds in which cows and calves were separated at 1 h (compared with >24 h) were more than 3 times as likely to have had a previous Johne's disease diagnosis. The authors posit that herd managers altered their management practices following the positive herd status report. In contrast, the practice of sourcing >25% of animals from outside dairies was associated with a current Johne's disease diagnosis in the herd, yet no evidence was provided to suggest that this practice underwent a similar modification (Wells and Wagner, 2000). Johnson-Ifearulundu and Kaneene (1998) reported that the process of cleaning maternity pens was linked to a 3-fold reduction in the odds of a positive herd-level MAP status. However, many commercial herds allow multiple animals in the calving area (e.g., 59% in the United States; USDA, 2016) or permit sick cows to be housed in these areas (25%). Of those herds that did use dedicated individual maternity pens, only 20 to 34% (depending on herd size) cleaned the area after each calving (USDA, 2016). There is evidence for a synergism of infection risk in the calving area, based upon the level of environmental cleanliness, udder hygiene, and presence of other lactating animals (Beaver et al., 2016). The evidence we have reviewed indicates that prompt calf removal should not be viewed as a substitute for proper hygiene and management in the maternity area.

**Respiratory Health.** Of the 70 included articles, 7 (3 single-herd and 4 multi-herd studies) addressed respiratory health in dairy calves. The results of these studies are shown in Table 4.

The majority of these papers did not investigate pneumonia as a primary outcome measure; all but one study (Gulliksen et al., 2009a) was included in other subsections of this review. Five studies failed to find any association between respiratory risk and dam-calf contact or nursing (although 2 of these studies were conducted using the same group of calves: Lundborg et al., 2005, and Svensson et al., 2003). The remaining 2 studies presented opposing conclusions, with Gulliksen et al. (2009b) reporting a higher risk of pneumonia for calves kept >24 h with the dam and Boonbrahm et al. (2004a) noting a lower pneumonia incidence in suckling calves. Further research is clearly required before meaningful conclusions can be reached, including studies for which the investigation of specific respiratory pathogens is a primary objective.

**Immunity.** Of the 70 included articles, 9 described calf immunity or failure of passive transfer (FPT) in suckling compared with artificial systems. The majority (n = 6) were single-herd trials, and 3 were multi-herd studies (Table 5).

Table 3. Manuscripts comparing Johne's disease (JD) across different durations of dam-calf contact<sup>1</sup>

Study	Country	Breed <sup>2</sup>	Study design	Groups compared (length of dam-calf contact)	n (animals)	Number of herds	Diagnostic	Conclusion
Berghaus et al., 2005	United States	Not specified	Risk assessment questionnaire paired with clinical case reports (data from United States National Animal Health Monitoring System)	Frequency with which calves are permitted to nurse on farm (continuous variable)	Not applicable	815	(Clinical case reports)	Reports of clinical JD less likely in herds that allowed calves to nurse the dam
Collins et al., 1994	United States	Not specified	Latency to dam-calf separation evaluated as a risk factor and paired with results from cross-sectional blood samples	Separation time categorized as <1, 1 to 8, or >8 h	4,990	158	Serum ELISA	Herd MAP <sup>3</sup> prevalence not associated with calf-dam separation time
Cetinkaya et al., 1997	England	Varied	Producers surveyed on duration of cow-calf contact in combination with an assessment of clinical case reports	Separation time categorized as 0, 1 to 10, or >10 d	Not applicable	2,915 <sup>4</sup>	(Clinical case reports)	No association between disease risk and duration calves are kept with the dam
Johnson-Ifeorunludu and Kaneene, 1998	United States	Not specified	Latency to dam-calf separation evaluated as a risk factor and paired with results from cross-sectional blood samples	Not specified (likely a continuous variable)	Not specified	121	Serum ELISA	Number of hours before dam-calf separation not associated with herd MAP infection status
Wells and Wagner, 2000	United States	Not specified	Data from United States National Animal Health Monitoring System assessed based upon latency to dam-calf separation	Separation time categorized as <24 or ≥24 h	32,622	1,004	Serum ELISA	Latency to cow-calf separation not associated with a current JD diagnosis
Ridge et al., 2005	Australia	Not specified	Latency to dam-calf separation evaluated as a risk factor in relation to results from the voluntary JD testing program	Separation time categorized as <12, 12-24, or >24 h	Cows >2 yr tested annually	54	Unspecified ELISA	Time before calf removal had no relationship to JD control
Ansari-Lari et al., 2009	Iran	HF and HF crossbreeds	Risk factors for MAP-positive bulk tanks evaluated, including whether the calf spent ≥3 h with the dam	Separation time categorized as <3 or ≥3 h	Not specified	110	Bulk-milk PCR	No association between herd infection status and calves spending ≥3 h with dam PR (95% CI) <sup>5</sup> = 0.91 (0.13-6.33)
Dieguez et al., 2008	Spain	HF	Latency to dam-calf separation evaluated as a risk factor and paired with results from cross-sectional blood samples	Separation time categorized as before or after colostrum feeding	5,528	101	Serum ELISA	Separating the calf after colostrum feeding not associated with herd infection status PR (95% CI) = 0.79 (0.13-4.94) ("positive" and "highly positive" herds considered together)

Continued

**Table 3 (Continued).** Manuscripts comparing Johne's disease (JD) across different durations of dam-calf contact<sup>1</sup>

Study	Country	Breed <sup>2</sup>	Study design	Groups compared (length of dam-calf contact)	n (animals)	Number of herds	Diagnostic	Conclusion
Tavornpanich et al., 2008	United States	HF and Jersey	Early separation of calf and dam evaluated based upon whether herds had a high MAP prevalence	Separation time categorized as 1 to 6 vs. >6 h	1,260	21	Serum ELISA	Late calf separation not associated with high MAP prevalence PR (95% CI) = 0.57 (0.16–2.06)
Norton et al., 2009	New Zealand	HF and Jersey <sup>6</sup>	Average duration of dam-calf contact evaluated in relation to self-reports of clinical JD	Separation time categorized as <12, 12 to 24, or >24 h (not specified if categories were used in analysis)	Not applicable	427	(Clinical case reports)	Average duration of dam-calf contact not associated with incidence of clinical JD
Correia-Gomes et al., 2010	Portugal	Not specified	Latency to dam-calf separation evaluated as a risk factor of herd MAP status	Separation time categorized as ≤ 6, 7 to 12, or >12 h	5,294	122	Milk ELISA	Hours cow and calf are together not associated with herd MAP status. Crude OR (95% CI) <sup>7</sup> with ≤6 h as reference = 1.26 (0.72–2.21) for 7–12 h and 1.40 (0.50–3.93) for >12 h
Nielsen and Toft, 2011	Denmark	Not specified	Longitudinal (4.25 yr) blood samples analyzed alongside the practice of separating calves from high-risk dams within 2 h	Separation time categorized as ≤2 or >2 h	All lactating cows	97	Milk ELISA	Removal of calves from high risk dams not associated with decreased MAP prevalence
Donat et al., 2016	Germany	HF	Average latency of cow-calf separation evaluated as a risk factor and paired with data from longitudinal (5 yr) fecal sampling	Not specified	All cows	28	Fecal culture	Latency of cow-calf separation not associated with cumulative herd-level incidence of MAP shedders
Pillars et al., 2011	United States	HF and Jersey	Longitudinal (5 yr) blood and fecal samples analyzed and assessed relative to time spent with the dam (including nursing)	Risk scores (1–10) assigned based upon time spent with dam (<30 min to >24 h) and nursing the dam (never to always)	3,707	7	Serum ELISA, fecal culture, or both	Nursing and time spent with the dam were risk factors associated with JD positive cows at the univariable but not multivariable stage

<sup>1</sup>Listed for each study are country, breed of cattle, study design, groups compared (in reference to length of cow-calf contact), total number of animals sampled, number of herds included, the diagnostic test implemented, and the authors' conclusion and direction of effect (with + signifying a beneficial effect of suckling or cow-calf contact, – signifying a negative effect, and = representing no difference. Studies are ordered by effect direction, then chronologically by year, then alphabetically within year).

<sup>2</sup>HF signifies that breed was reported as Holstein, Friesian, or Holstein-Friesian. This designation includes country-specific variants such as Danish Holstein.

<sup>3</sup>MAP = *Mycobacterium avium* ssp. *paratuberculosis*, the etiological agent of Johne's disease.

<sup>4</sup>Sample size obtained from Cetinkaya et al., 1998.

<sup>5</sup>PR (CI) = prevalence ratio (95% CI).

<sup>6</sup>Predominantly.

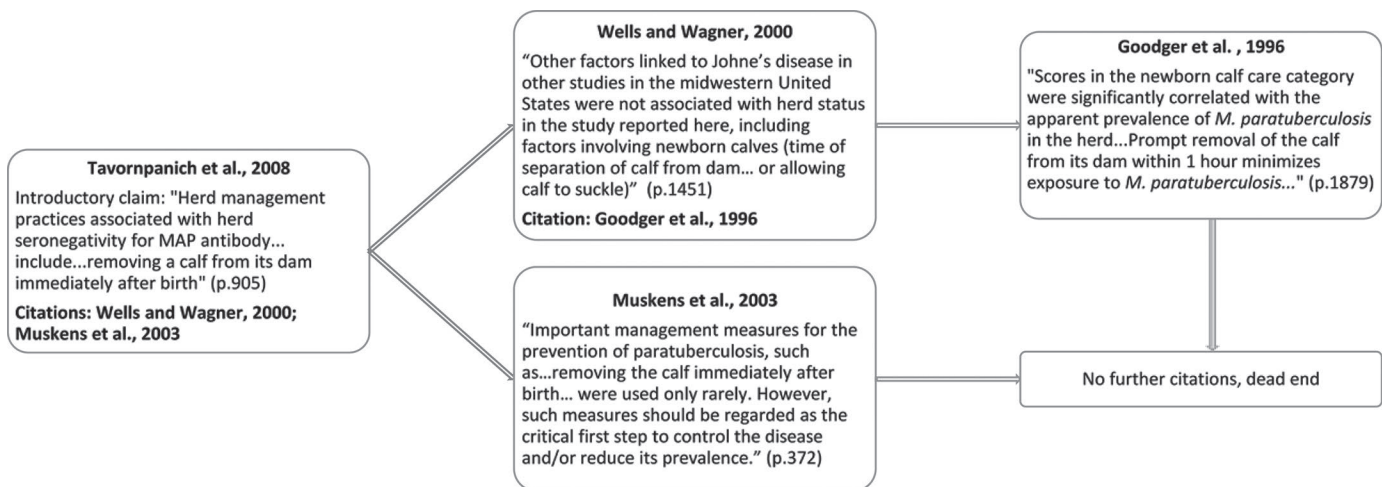
<sup>7</sup>OR (CI) = odds ratio (95% CI).

The cited studies present conflicting conclusions. For example, Stott et al. (1979) and Quigley et al. (1995) described a positive association between suckling and immunoglobulin absorption in neonatal calves, and Selman et al. (1971) found that the presence of the dam led to improved passive transfer. In contrast, several articles concluded that suckling results in higher levels of FPT (Nocek et al., 1984; Besser et al., 1991; Trotz-Williams et al., 2008b; Beam et al., 2009). This discrepancy may, in part, be traced back to the source and quantity of colostrum offered to control groups. It is now well established that quantity, quality, and promptness of colostrum administration is pivotal in facilitating immunoglobulin absorption and thus lowering the rate of FPT (see Godden, 2008). The current recommendation stipulates that calves obtain 10 to 12% of their BW in colostrum at first feeding, and additional benefits have been shown in calves receiving further doses of colostrum at 12 h postpartum (Godden, 2008). In several of the older studies (Stott et al., 1979; Quigley et al., 1995), the volume of colostrum fed to control groups would be considered insufficient by today's standards, and is likely not comparable to the amount a suckling calf would obtain from the dam. Moreover, in Stott et al. (1979) the colostrum provided to control calves was pooled; pooling has been reported to increase the bacterial burden, leading to inhibition of immunoglobulin absorption (Stewart et al., 2005). Thus, differences in FPT between dam-reared and artificially raised calves may be attributable to colostrum allowance.

Other studies seeking to compare rates of passive transfer between the 2 groups are often encumbered

by different limitations. Besser et al. (1991) collected data from 3 separate herds, each with different colostrum management practices (tube feeding, bottle feeding, or suckling). Because these herds likely differed in a variety of other dimensions, and successful immunoglobulin absorption is affected by numerous external factors (Godden, 2008), it is difficult to isolate the effect of suckling. Besser et al. (1991) made some effort to measure colostrum quality in all groups, but large volumes were fed to the control animals, and the authors acknowledge that these would far exceed the expected intake of a suckling calf. In Nocek et al. (1984) and Beam et al. (2009), calves fed high-quality and promptly administered colostrum were compared with an unmonitored suckling group, with unknown colostrum quality and latency to feed. Thus, the same concerns regarding insufficient colostrum allowance (Stott et al., 1979; Quigley et al., 1995) are replicated, but in this case, are transferred to the suckling group.

Several other studies have addressed the question cow-calf removal and FPT without drawing a direct comparison between artificial rearing and suckling systems. For example, McAloon et al. (2016) found that increased time spent in the calving pen was associated with diminished immunoglobulin absorption, likely because many calves did not suckle in the first few hours after birth. Arguably, these conclusions are attributable to latency until farmer intervention rather than time spent with the dam, per se. Producers aim to provide prompt administration of high quality colostrum to separated calves and could provide similar interventions for the suckling calf.



**Figure 2.** Example of a chain of citations in the Johne's disease literature evaluating the claim that immediate cow-calf separation reduces Johne's disease prevalence. Newborn calf care (Goodger et al., 1996) represents an aggregate of the following management practices: (1) whether colostrum was harvested from a clean udder (free of manure), (2) whether the bottles used to store colostrum were clean, (3) whether colostrum was pooled, and (4) whether calves were permitted extended contact with the dam. MAP = *Mycobacterium avium* ssp. *paratuberculosis*.

Table 4. Manuscripts comparing respiratory health across different durations of dam-calf contact<sup>1</sup>

Study	Country	Breed	Study design	Groups compared (length of dam-calf contact)	n (calves)	No. of herds (groups)	Conclusion
Boonbrahm et al., 2004a	Thailand	HF <sup>2</sup>	Incidence of disease compared in calves provided restricted suckling opportunities and those fed by bucket	3 d free contact (both groups), then 15 min (2×/d) for 80 d (postmilking for restricted suckling group)	40	1 (2)	Incidence of pneumonia 3× higher in bucket reared versus suckling calves <sup>2</sup>
Perez et al., 1990	The Netherlands	HF, Dutch Friesian, Meuse-Rhine-Issel, and cross breeds	Multi-herd study comparing mortality in dairy calves under different managerial systems (including whether calves were allowed to suckle)	Not specified	1,037	63	Allowing the calf to suckle was not a risk factor for respiratory disease
Little et al., 1991	Ethiopia	Friesian × Boran	Health assessed in calves permitted restricted suckling opportunities compared with calves fed by bucket until weaning at 94 d	24 h free contact then separated, compared with 24 h free contact then restricted suckling 2×/d before milking	13	1 (2)	No difference in pneumonia incidence between calves obtaining milk by restricted suckling versus bucket
Krohn et al., 1999	Denmark	HF	Incidence of disease compared in calves separated from the dam, or kept with the dam (with and without suckling opportunities)	Immediate separation or 4 d of contact	57	1 (3)	No difference in the treatment groups with respect to incidence of pneumonia
Svensson et al., 2003	Sweden	Swedish Red, HF, cross-breed	Multi-herd study including disease evaluations by farmers and veterinarians and questions on colostrum feeding methods	Not specified	3,081	122	No difference in odds of pneumonia in calves that received colostrum by suckling compared with other methods
Lundborg et al., 2005	Sweden	Swedish Red, HF, cross-breed	Multi-herd study including disease evaluations by farmers and veterinarians and the effect of management factors	Farms categorized based on proportion of calves kept with the dam for some time after birth (0, >0 but <1, or 1 or more d)	3,081	122	Proportion of calves that were kept with dam not associated with pneumonia risk
Gulliksen et al., 2009a	Norway	Not specified, likely varied	Multi-herd study to evaluate risk factors for respiratory disease	≤24 h of contact compared with >24 h of contact	5,101	135	Leaving calves with the dam for >24 h was found to increase the risk of respiratory disease in calves. Hazard ratio (95% CI) = 3.5 (1.3–9.2)

<sup>1</sup>Listed for each study are country, breed of cattle, study design, groups compared (in reference to length of cow-calf contact), total number of animals sampled, number of herds included (and groups within herds where applicable), and the authors' conclusion and direction of effect (with + signifying a beneficial effect of suckling or cow-calf contact, – signifying a negative effect, and = representing no difference. Studies are ordered by effect direction, then chronologically by year, then alphabetically within year).

<sup>2</sup>HF signifies that breed was reported as Holstein, Friesian, or Holstein-Friesian. This designation includes country-specific variants such as Danish Holstein.

<sup>3</sup>No statistical test performed.

Table 5. Manuscripts comparing passive transfer of immunity in calves with and without suckling opportunities or maternal contact<sup>1</sup>

Study	Country	Breed <sup>2</sup>	Contact type	Contact duration	Contact duration (controls)	Type of colostrum (control groups)	Amount of colostrum (control groups)	n (calves)	No. of herds (no. of groups)	Conclusion
Selman et al., 1971	Not specified	Ayrshire, Friesian × Ayrshire	Free contact (+ bottle fed)	18 h	Separation at 15 min postpartum	Thawed, pooled colostrum at 1, 5, and 9 h postpartum	11.3 mL/kg of birth weight	50	1 (5)	Calves that were mothered had higher serum immune lactoglobulin concentrations
Stott et al., 1979	Not specified	Not specified	Restricted suckling	24 h	0 d (immediate separation)	Pooled colostrum at 0, 4, 8, 12, 16, 20 or 24 h postpartum	0.5, 1, or 2 L	40	1 (2 main groups, many subgroups)	Colostrum Ig absorption much greater in suckling calves vs. controls fed pooled colostrum by bottle
Quigley et al., 1995	Not specified	Jersey	Free contact	3 d	0 d (immediate separation)	Fresh colostrum from the dam	1 L after birth followed by 1 L at 12 h	101	1 (2 relevant)	Serum IgG and IgM concentrations were greater at 24 h for suckling group.
Rajala and Castrén, 1995	Finland	Ayrshire	Free contact	5 d	15–30 min	Fresh colostrum from the dam from a nipple pail	2 L at 4 h, then 3 L at next 2 feedings	30	1 (2)	Calves in both groups acquired equal passive immune transfer
Franklin et al., 2003	United States	HF	Free contact	3 d	0 d (immediate separation)	Fresh colostrum from the dam by bottle	2.84 L at birth followed by 1.89 L at 12 h	30	1 (4)	Calves that nursed had lower serum IgG at 24 h postpartum (5.8 g/dL compared with 6 g/dL) but no significant differences at wk 1
Nocek et al., 1984	Not specified	HF	Free contact	Not specified	Not specified	Thawed colostrum by nipple bottle	1.81 kg, at 15 min, 4 h, and 12 h	125	1 (7)	Calves fed high-quality colostrum by bottle had higher serum protein compared with nursing group.
Besser et al., 1991	Not specified	HF	Free contact (herd C)	72 h (herd C)	0 d (herd A); not specified (herd B)	Fresh or thawed colostrum tube-fed (herd A); fresh colostrum by nipple bottle (herd B)	2.8 L (herd A); 1.9 L every 12 h (herd B)	582	3 (1 per herd)	(62% FPT rate in suckling herd; 19% in nipple-bottle herd; 11% in tube-fed herd)
Trotz-Williams et al., 2008b	Canada	HF	(Herd-level prevalence of FPT responses, including whether or not calves were allowed to suckle the dam)			(Herd-level prevalence of FPT investigated based upon questionnaire)		423	112	Percentage of calves permitted to suckle was positively associated with increased risk of FPT
Beam et al., 2009	United States	Not specified	(Multi-herd survey paired with serum samples was conducted, and FPT rates in calves that nursed were compared with those hand-fed colostrum >4 h and ≤4 h postpartum)					1,816	394	Calves that nursed at unspecified times had 2.4× greater odds of FPT than calves hand-fed at ≤4 h

<sup>1</sup>Listed for each study are country, breed of cattle, type of cow-calf contact, duration of this contact, how colostrum was fed to calves in the control condition (i.e., in which calves were not allowed to suckle), the amount of colostrum provided in this condition, the total number of calves followed, the number of herds (and groups within a herd), and the authors' conclusion and direction of effect (with + signifying a beneficial effect of suckling or cow-calf contact, – signifying a negative effect, and = representing no difference. Studies are ordered chronologically within effect direction). FPT = failure of passive transfer.

<sup>2</sup>HF signifies that breed was reported as Holstein, Friesian, or Holstein-Friesian.

<sup>3</sup>No statistical test performed.

It is important to recognize that a large proportion of dairy calves left with the dam fail to nurse within 6 h after parturition (46% of calves born to dams of second or higher parity; Edwards and Broom, 1979). Calves may exhibit a higher latency to suckle if they have low vigor or if the dam has experienced a difficult calving (Rajala and Castrén, 1995). Thus, the farmer cannot rely upon nature alone but rather should supervise and intervene if necessary to promote adequate passive immune transfer to the calf. Calves born to dams with low-hanging udders (Ventorp and Michanek, 1992) may also have more difficulty obtaining colostrum by suckling, suggesting that these calves in particular could benefit from active assistance with nursing or administration of colostrum by bottle. Together these observations indicate that various types of farmer intervention, including careful observation and supplementary feeding, may be beneficial regardless of whether the calf is separated from the cow.

Given that bacterial contamination of colostrum can interfere with immunoglobulin absorption (see Godden, 2008), it is useful to compare bacterial counts in directly stripped colostrum (which a suckling calf would be expected to obtain) and corresponding counts in harvested and stored colostrum sources. One study (Stewart et al., 2005) found that the process of harvesting colostrum into a bucket resulted in dramatically higher bacterial counts than in directly stripped colostrum. Additionally, bacteria in colostrum can multiply precipitously when kept at ambient room temperature and may even reach concentrations exceeding 1,000,000 cfu/mL after 48 h of refrigeration (Stewart et al., 2005). Bacterial growth in colostrum may add variation to how calves perform when fed by bucket or teat; artificial colostrum feeding is therefore likely to work best on farms able to mitigate this risk (e.g., through decontamination of storage containers).

Thus there may be challenges and benefits associated with both hand feeding and nursing colostrum from the dam. Given the conflicting evidence presented, and the flawed comparisons between groups, the common recommendation to separate the cow and calf immediately after parturition to ensure successful immune transfer should not be considered to be evidence based. However, leaving the calf unsupervised with the dam cannot serve as a replacement for careful colostrum management.

**Mortality.** Of the 70 included articles, 2 addressed the subject of general calf health and 10 directly addressed calf mortality. Six were single-herd trials and the remaining 6 incorporated between 26 and 906 herds, with data obtained from questionnaires or surveys on management practices and calf mortality rates (Table 6).

There appears to be little consensus regarding mortality in dam-reared versus conventionally raised calves. The reasons for this variation are likely similar to those previously described for the FPT outcomes. That is, conventionally reared calves may be at risk when study methodology results in inadequate colostrum uptake (as in Quigley et al., 1995). Insufficient colostrum quantity has been definitively linked to FPT, which, in turn, has strong associations with mortality (see Godden, 2008). Similarly, dam-reared calves may experience increased mortality rates when colostrum intake is unmonitored, unaided, or not quality-controlled. The confounding of dam rearing with low-input management may account for the conclusions from large-scale, multi-herd studies such as Jenny et al. (1981) and Wells et al. (1996). Indeed, Jenny et al. (1981) stated that farmers leaving calves with the dam may wrongly assume these calves have obtained sufficient colostrum via suckling. In contrast, farmers separating the calf and dam must undertake the “mothering role” themselves and provide individualized attention.

Waltner-Toews et al. (1986) noted an interesting phenomenon in calves provided assistance at suckling. In this study, calves that suckled colostrum naturally were less likely to require treatment for disease than were calves fed colostrum by bucket; however, calves requiring assistance to suckle also had higher odds of being treated for disease compared with calves suckling naturally. These findings could indicate that farmers were more concerned about the assisted suckling group and therefore were more likely to provide treatment, or that these animals were “weak calves to begin with” (p. 154) and thus required more treatment. In any case, these findings do not imply that suckling assistance itself leads to increased disease rates.

### **Cow Health: Mastitis**

Of the 70 included articles, 18 addressed mastitis in dairy cows. Of these, 16 were conducted using a single herd, wherein 2 to 4 groups were evaluated. The cohorts typically consisted of cow-calf pairs in either full or restricted-suckling systems in addition to variants of artificially reared controls; however, one of these articles (Wagenaar et al., 2011) addressed the future udder health of heifer calves raised under contrasting management conditions. Of the remaining multi-herd studies, one evaluated cohorts across 3 separate herds, and the other employed a questionnaire on management paired with clinical mastitis assessments for 105 herds. The assessments of udder health and mastitis rates were conducted using The California Mastitis Test (6), The Rapid Mastitis Test (1), The Wisconsin Mastitis Test (1), The Whiteside Test (1), SCC or SCS

(4), electrical conductivity (1), or unspecified methods (4). Table 7 lists the 18 included studies.

Consistent with the findings of Johnsen et al. (2016), the studies reviewed here demonstrate a beneficial effect of suckling systems in reducing the risk of mastitis in dairy cows. In addition to the advantages of suckling to remove residual milk from the udder, reduced mastitis rates in suckled cows could be attributed to lysozymes for bacterial inhibition present in calf saliva (Mdegela et al., 2004). No study in our systematic review demonstrated an increased risk of IMI in suckled cows; however, one study did report higher rates of teat damage (Thomas et al., 1981). This damage was most pronounced in cows suckling 4 calves twice daily for 8 wk compared with machine milking. These authors recommend nursing for shorter durations to prevent the temporary teat damage associated with continuous, long-term suckling. Walsh (1974) found that the greatest benefits in mastitis prevention afforded to nursing cows were in early and mid-lactation. Together, these results suggest that producers interested in reducing the risk of mastitis should consider the use of suckling, particularly in early lactation (see also Kälber and Barth, 2014).

### SUMMARY OF KEY FINDINGS AND DIRECTIONS FOR FUTURE RESEARCH

We systematically reviewed literature on the effect of suckling on calf health, with an emphasis on calf enteric health (including general scours, cryptosporidiosis, and Johne's disease), respiratory health, immune status, and mortality. In sum, the evidence presented in this review does not support the recommendation of immediate separation to promote calf health. Specifically, we found no consistent evidence of increased risk of pneumonia in calves reared with the cow; however, the available literature on this subject was limited and often did not address the subject of respiratory health as a primary research objective. With respect to enteric health, the majority of studies demonstrated that rearing the calf with the dam had no effect on scours, or was associated with a reduced risk. Future research should aim to identify differences in etiology (e.g., infectious versus nutritional causes) between scours in dam-reared compared with artificially reared calves. The leading cause of mortality in dairy calves is diarrhea, for which a wide variety of enteric pathogens are responsible (Cho and Yoon, 2014). With the exception of *C. parvum* (for which the evidence was mixed), common pathogenic causes of scours in the dairy calf have not been evaluated in detail in artificial compared with suckling systems (apart from the work of Klein et al., 2013, and Quigley et al., 1994).

Johne's disease is commonly considered an important risk associated with cow-calf contact, but we could find little evidence that rearing the calf with the dam increases MAP prevalence. Contact with the dam after birth cannot be considered an appropriate surrogate variable for "contact with adult cow manure," unless aspects of cow hygiene, colostrum management, maternity-pen management, and overall cleanliness of the calving area are poorly governed. As several these variables have been strongly associated with MAP transmission risk (e.g., see Ansari-Lari et al., 2009; Tiwari et al., 2009; Donat et al., 2016), initiatives to improve these measures should be prioritized over cow-calf separation. More targeted longitudinal research is required to assess whether immediate cow-calf separation provides any substantive benefit across herds with differing cow-level prevalence.

For measures of calf immunity and mortality, no consistent pattern was observed, with studies split between those showing benefits versus risks associated with suckling. Studies demonstrating benefits associated with suckling typically did not provide sufficient colostrum or milk to the artificially reared calves. Similarly, articles detailing the risks of leaving the calf with the dam did not systematically monitor colostrum intake, quality, and suckling latency. Interestingly, our systematic review uncovered only a single study addressing immunity and one addressing mortality authored within the last decade (Beam et al., 2009, and Gulliksen et al., 2009b, respectively). In Nocek et al. (1984), several experimental groups were completely deprived of colostrum. Given our current knowledge of the importance of colostrum quality, quantity, and timeliness of provision, further studies should assess the feasibility of keeping the calf with the dam and providing supplemental high-quality colostrum as soon as possible after parturition.

The results of our systematic search into the effects of suckling systems on dairy cow health do not indicate any benefit to early separation. All of the studies included in this review demonstrated a reduced risk of mastitis in nursing dairy cattle or reported no difference. Mastitis is one of the most prevalent disorders in dairy systems worldwide, and some evidence suggests that incidence is on the rise in North American herds (see USDA, 2007, versus USDA, 2018). As mastitis is also, arguably, the most economically significant challenge facing dairy producers (see Seegers et al., 2003; Jamali et al., 2018), the favorable conclusions with regard to dam-calf suckling should not be taken lightly. Our conclusions on mastitis are in agreement with other reviews on this topic (e.g., Kamboj and Kumar, 2013; Kälber and Barth, 2014; Johnsen et al., 2016); the consensus among these authors is that some type of

**Table 6.** Manuscripts comparing mortality rates in calves or general calf health, with and without a period of extended maternal contact<sup>1</sup>

Study	Country	Breed <sup>2</sup>	Contact type	Contact duration	Contact duration (controls)	Type of colostrum (control groups)	Amount of colostrum (control groups)	Calf age under study	n (calves)	No. of herds (no. of groups)	Conclusion
Alvarez et al., 1980	Mexico	HF, Brown Swiss, × Zebu	Restricted suckling	Calf present at milking, then restricted suckling	0 d (immediate separation "at birth")	Not specified, then milk by bucket	Not specified	0–24 mo	464	1 (2)	Mortality was 6% in restricted suckling group and 56% in artificially reared animals
Kovalcik et al., 1980	Not specified	Blackspotted	Free Contact	48-h observation	≤1 h	Not specified	Not specified	48 h	6	1 (2)	Dam-reared calves urinated and defecated earlier and more frequently
Metz and Metz, 1986	Poland	HF	Free contact	24-h observation	0 d (immediate separation)	Not specified	2 L	0–1 d	67	1 (2)	Dam-reared calves urinated and defecated earlier, beneficial for first colostrum intake
Waltner-Toews et al., 1986	Canada	HF	(Multi-herd study based upon questionnaires, farm visits, and record keeping)					0–28 d	1,800	35	Calves that suckled naturally had lower odds of treatment for disease versus bucket-fed calves
Quigley et al., 1995	Not specified	Jersey	Free contact	3 d	0 d (immediate separation)	Fresh colostrum from dam	1 L after birth, 1 L at 12 h	0–32 d	101	1 (2) (relevant)	Mortality rates lower for suckling group
Boonbrahm et al., 2004a	Thailand	HF <sup>d</sup>	Restricted suckling	3 d full, 15 min (2×/d) for 80 d (postmilking)	3 d full	Dam's colostrum	N/A <sup>5</sup>	4–84 d	40	1 (2)	Increased mortality in separated calves vs. those with restricted suckling opportunity
Hartman et al., 1974	United States	HF	(Multi-herd study with questionnaires on calf housing provided to producers)				N/A	0–90 d	Not specified	247	Housing calves separately from cows had no effect on mortality rates
Curtis et al., 1988	United States	HF	(Multi-herd study with standardized check-off forms provided to producers regarding health and mortality in addition to questions pertaining to calf management)				N/A	0–90 d	1,171	26	Mortality not significantly different among calves receiving colostrum by suckling vs. other methods
Perez et al., 1990	The Netherlands	HF, Dutch Friesian, Meuse-Rhine-Issel and cross breeds	(Multi-herd study comparing mortality in dairy calves under different managerial systems)				Varied	0–28 d	1,037	63	Mortality not significantly different in calves that received colostrum by suckling versus by hand

*Continued*

**Table 6 (Continued).** Manuscripts comparing mortality rates in calves or general calf health, with and without a period of extended maternal contact<sup>1</sup>

Study	Country	Breed <sup>2</sup>	Contact type	Contact duration (controls)	Type of colostrum (control groups)	Amount of colostrum (control groups)	Calf age under study	n (calves)	No. of herds (no. of groups)	Conclusion
Little et al., 1991	Ethiopia	Friesian × Boran	Restricted suckling	24 h free contact, then restricted suckling 2×/d before milking	24 h	All of the dam's colostrum	0–94 d	13	1 (2)	No mortalities occurred, thus no difference between bucket reared and restricted suckling group
Wells et al., 1996	United States	HF <sup>4</sup>	Free contact	24 h	Varied	Varied	0–21 d	9,484	906	Increased mortality rate in calves separated at 24 vs. 12 h
Jenny et al., 1981	United States	Varied	(Multi-herd study with survey forms on management practices and mortality data mailed to producers)		N/A	N/A	0–6 mo	Not specified	140	Lower mortality in herds where calves were separated early
Gulliksen et al., 2009b	Norway	Norwegian Red <sup>4</sup>	(Multi-herd study with questionnaires on calf housing provided to producers)		Varied	Varied	0–7 d	5,382	125	Suckling calves tended to have increased risk of mortality compared with hand-fed calves

<sup>1</sup>Listed for each study are country, breed of cattle, type of cow-calf contact allowed, duration of this contact, how colostrum was fed to calves in the control condition (i.e., in which calves were not allowed to suckle), the amount of colostrum provided in this condition, the age range of calves under study, the total number of calves followed, the number of herds (and groups within a herd), and the authors' conclusion and direction of effect (with + signifying a beneficial effect of suckling or cow-calf contact, – signifying a negative effect, and = representing no difference. Studies are ordered chronologically within effect direction).

<sup>2</sup>HF signifies that breed was reported as Holstein, Friesian, or Holstein-Friesian.

<sup>3</sup>No statistical test performed.

<sup>4</sup>Predominantly.

<sup>5</sup>N/A = not applicable.

<sup>6</sup>No significant difference,  $P = 0.07$ .

Table 7. Manuscripts comparing mastitis rates and udder health in cows with and without opportunities to nurse<sup>1</sup>

Study	Country	Breed <sup>2</sup>	Contact type	Contact duration	Contact duration (controls)	Assessment used	n (cows)	n (herds or groups)	Conclusion
Walsh, 1974	Ireland	HF and Shorthorn	Restricted suckling	"During regular milking hours" throughout lactation	0 d (immediate separation)	CMT, <sup>3</sup> plate count	24	1 (4)	Suckled cows had fewer udder infections, most pronounced during early lactation: RR (CI) <sup>4</sup> = 14.0 (1.9–102.3) early lactation, 2.1 (1.2–3.7) mid lactation, 1.3 (0.73–2.3) late lactation. Infection disappeared in heifer nursing her calf
Rigby et al., 1976	Not specified	HF × Zebu	Restricted suckling	20 min after milking for ~60 d	0 d (immediate separation)	Whiteside test	4	1 (4)	
Alvarez et al., 1980	Mexico	HF, Brown Swiss, × Zebu	Restricted suckling	Milking in the presence of calf, then restricted suckling postmilking	Not specified	CMT	92	1 (2)	Restricted suckling and presence of the calf at milking was associated with reduced subclinical mastitis incidence
Sanh et al., 1995	Tanzania	Boran, HF, Ayrshire	Restricted suckling	3 d free contact, 30 min (postmilking) <sup>6</sup>	3 d free contact	Not specified	24	1 (2)	25% of control cows had at least 1 infected quarter, compared with 0% of nursed cows
Sanh et al., 1997	Vietnam	HF × local	Restricted suckling	3 d free contact, 30 min (2×/d) for 6 mo	3 d free contact	Not specified	24	1 (2)	3 cows in the control group had mastitis, compared with 0 nursed cows
Mejia et al., 1998	Tanzania	Mpwapwa	Restricted suckling	5 d free contact, 30 min (2×/d) for 6 mo	5 d free contact	Not specified	36	1 (2)	Incidence of clinical mastitis higher in control cows RR (CI) = 10.0 (1.3–76.1)
Boonbrahm et al., 2004b	Thailand	HF	Restricted suckling	3 d free contact, 15 min (2×/d) for 80 d (postmilking) <sup>6</sup>	4 d free contact	SCC, SCS	40	1 (4)	Controls had 7–18% higher SCS
Mdegela et al., 2004	Tanzania	Varied	Restricted suckling	Not specified (likely variable)	Not specified	CMT, clinical exam	240	105	Risk of a quarter being CMT positive was reduced by residual suckling RR (CI) = 0.9 (0.8–0.97)
Frøberg et al., 2007	Mexico	HF × Zebu	Restricted suckling	5 d free contact, 30 min after milking (1×/d), then 30 min in afternoon for 4 mo <sup>7</sup>	5 d free contact	CMT	24	1 (2)	CMT scores lower in cows suckled by their calves RR (CI) = 0.5(0.3–0.8) (CMT scores of 1 vs. ≥2)
Frøberg et al., 2008	Mexico	HF	Restricted suckling	30 min (2×/d) for 49 d	0 d (immediate separation)	CMT	22	1 (2)	Suckled cows tended to have lower CMT scores
González-Sedano et al., 2010	Mexico	HF × Zebu	Restricted suckling	4 d free contact, 30 min (2×/d, before and after milking) for 116 d	4 d, plus 30 min before milking for 116 d	CMT, clinical exam	30	1 (2)	Cows that did not nurse their calves after milking more likely to develop mastitis: RR (CI) = 1.6 (1.2–2.1) for SM, <sup>9</sup> 6.6 (3.2–13.9) for CM <sup>9</sup>

Continued

**Table 7 (Continued).** Manuscripts comparing mastitis rates and udder health in cows with and without opportunities to nurse<sup>1</sup>

Study	Country	Breed <sup>2</sup>	Contact type	Contact duration	Contact duration (controls)	Assessment used	n (cows)	n (herds or groups)	Conclusion
Margerison et al., 2002	Colombia	Lucerna	Restricted suckling	4 d free contact, 15 min (2×/d) for 3 mo (postmilking)	4 d free contact	SCC	48	1 (3)	SCC reduced by suckling; mastitis incidence not different between groups
Fulkerson et al., 1978	Not specified	HF	Restricted suckling, foster	Postmilking (1×/d) for 32 d	36 h	Rapid mastitis test, culture	30	1 (2)	Degree of udder infection was not different between the groups
Bar-Peled et al., 1995	Israel	HF	Restricted suckling, foster	15 min (3×/d) for 42 d	Not specified	Not specified	29	1 (3)	Mastitis rate was not observably different between groups
Wagenaar and Langhout, 2007	The Netherlands	HF	Free contact (foster and single)	90 d	2–3 d	SCC	283	3 (3 per herd)	No difference in SCC between groups
Mendoza et al., 2010	Uruguay	HF	Restricted suckling	30 min (2×/d), for 56 d	0 d (immediate separation)	Electrical conductivity	32	1 (2)	Udder health was not affected by treatment
Wagenaar et al., 2011	The Netherlands	HF	Free contact	90 d	0 d (immediate separation)	SCC and culture	39 calves	1 (3)	Heifers raised in a suckling system did not demonstrate improved udder health during later development
Thomas et al., 1981	Australia	HF	Restricted suckling	30 min (2×/d) for between 7 and 56 d	0 d (immediate separation)	Wisconsin mastitis test	30–61	1 (4 studies)	Teat damage increased with duration of suckling (i.e., between 7 and 56 d) but improved after suckling ceased. Incidence of mastitis low in all groups

<sup>1</sup>Listed for each study are country, breed of cattle, type of cow-calf contact, duration of this contact, the mastitis assessment used, the total number of cows followed, the number of herds (and groups within a herd where relevant), and the author's conclusion and direction of effect (with + signifying a beneficial effect of suckling, – signifying a negative effect, and = representing no difference. Studies are ordered chronologically within effect direction).

<sup>2</sup>HF signifies that breed was reported as Holstein, Friesian, or Holstein-Friesian.

<sup>3</sup>California mastitis test scores.

<sup>4</sup>RR (CI) = relative risk (95% CI). All relative risks reported in this table are at the quarter level.

<sup>5</sup>No statistical test performed.

<sup>6</sup>Plus suckling premilking for several seconds to stimulate milk letdown for the first 45 d. From 0 to 45 d, 3 of the 4 quarters were (hand) milked. Thereafter, all 4 quarters were (hand) milked.

<sup>7</sup>Only 3 out of the 4 udder quarters were machine milked.

<sup>8</sup>No significant difference,  $P = 0.08$ .

<sup>9</sup>SM = subclinical mastitis; CM = clinical mastitis.

restricted suckling system has the potential to reduce mastitis on dairy farms. Future research is necessary to determine the exact mechanisms responsible for reducing this risk (e.g., removal of residual milk by the calf, lysozymes present in calf saliva, and so on).

Surprisingly, there was an absence of literature addressing other common postpartum diseases and conditions such as metritis, ketosis, and retention of the fetal membrane. In their review, Flower and Weary (2003) address retained fetal membranes and cite the Danish work of Krohn et al. (1990), which highlights a beneficial effect of suckling on lowering the risk of placental retention. Flower and Weary (2003) suggest that this evidence could partially explain the lower incidence of retained fetal membranes in beef compared with dairy cows (Noakes, 1997). Another study demonstrated no effects of immediate calf separation on latency of placental expulsion or placentophagia (Lidfors, 1996). Given the importance of postpartum diseases on the longevity and productivity of dairy cattle (Mulligan and Doherty, 2008), this area of research requires further exploration.

## CONCLUSIONS

The evidence extracted from the included journal articles does not support a recommendation of early dairy cow-calf separation on the basis of calf or cow health. Specifically, the body of literature on calf immunity, mortality, scours, and pneumonia does not indicate that early separation is advantageous. Moreover, there is an absence of literature to suggest that immediate dam-calf separation confers benefits toward mitigating Johne's disease. With respect to cow health, this review indicates that suckling is protective against mastitis.

## ACKNOWLEDGMENTS

We are grateful to Dairy Australia (Melbourne, Australia) for soliciting this review and for providing support to Rebecca Meagher and Annabelle Beaver. We also thank Angela Yu and Auguste de Pennart (both students at the University of British Columbia) for their assistance.

## REFERENCES

- Alvarez, F. J., G. Saucedo, A. Arriaga, and T. R. Preston. 1980. Effect on milk production and calf performance of milking crossbred European/Zebu cattle in the absence or presence of the calf, and of rearing their calves artificially. *Trop. Anim. Prod.* 5:25–37.
- Animal Health Australia. 2016. Three step calf rearing plan. Accessed Aug. 10, 2018. <https://www.animalhealthaustralia.com.au/what-we-do/endemic-disease/johnes-disease/jd-and-dairy-cattle/three-step-calf-rearing-plan/>.
- Ansari-Lari, M., M. Haghkhah, A. Bahramy, and A. M. Novin Baheran. 2009. Risk factors for *Mycobacterium avium* ssp. *paratuberculosis* in Fars province (Southern Iran) dairy herds. *Trop. Anim. Health Prod.* 41:553–557.
- Atlantic Veterinary College. 2015. Atlantic Johne's Disease Initiative, Risk Assessment Workbook. Accessed Aug. 10, 2018. <https://www.atlanticjohnes.ca/files/documents/RAMPNeg.pdf>.
- Bar-Peled, U., E. Maltz, I. Bruckental, Y. Folman, Y. Kali, H. Gacitua, A. R. Lehrer, C. H. Knight, B. Robinson, H. Voet, and H. Tagari. 1995. Relationship between frequent milking or suckling in early lactation and milk production of high producing dairy cows. *J. Dairy Sci.* 78:2726–2736.
- Beam, A. L., J. E. Lombard, C. A. Koprak, L. P. Garber, A. L. Winter, J. A. Hicks, and J. L. Schlater. 2009. Prevalence of failure of passive transfer of immunity in newborn heifer calves and associated management practices on US dairy operations. *J. Dairy Sci.* 92:3973–3980.
- Beaver, A., P. L. Ruegg, Y. T. Grohn, and Y. H. Schukken. 2016. Comparative risk assessment for new cow-level *Mycobacterium avium* ssp. *paratuberculosis* infections between 3 dairy production types: Organic, conventional, and conventional-grazing systems. *J. Dairy Sci.* 99:9885–9899.
- Berghaus, R. D., J. E. Lombard, I. A. Gardner, and T. B. Farver. 2005. Factor analysis of a Johne's disease risk assessment questionnaire with evaluation of factor scores and a subset of original questions as predictors of observed clinical paratuberculosis. *Prev. Vet. Med.* 72:291–309.
- Besser, T., C. C. Gay, and L. Pritchett. 1991. Comparison of three methods of feeding colostrum to dairy calves. *J. Am. Vet. Med. Assoc.* 198:419–422.
- Boonbrahm, N., K. Peters, and C. Kijora. 2004a. The influence of calf rearing methods and milking methods on performance traits of crossbred dairy cattle in Thailand 3. Calf performance. *Arch. Tierzucht* 47:405–414.
- Boonbrahm, N., K. J. Peters, and W. Intisang. 2004b. The influence of calf rearing methods and milking methods on performance traits of crossbred dairy cattle in Thailand – 1. Milk yield and udder health. *Arch. Anim. Breed.* 47:211–224.
- Carias, L., and R. Vaccaro. 1984. Rearing Holstein Friesian and Brown Swiss calves on nurse cows. *Trop. Anim. Prod.* 9:257–263.
- Cetinkaya, B., H. M. Erdogan, and K. L. Morgan. 1997. Relationships between the presence of Johne's disease and farm and management factors in dairy cattle in England. *Prev. Vet. Med.* 32:253–266.
- Cetinkaya, B., H. M. Erdogan, and K. L. Morgan. 1998. Prevalence, incidence and geographical distribution of Johne's disease in cattle in England and the Welsh borders. *Vet. Rec.* 143:265–269.
- Cho, Y. I., and K. J. Yoon. 2014. An overview of calf diarrhea-Infectious etiology, diagnosis, and intervention. *J. Vet. Sci.* 15:1–17.
- Collins, M. T., and I. R. Morgan. 1991. Epidemiological model of paratuberculosis in dairy cattle. *Prev. Vet. Med.* 11:131–146.
- Collins, M. T., D. C. Sockett, W. J. Goodger, T. A. Conrad, C. B. Thomas, and D. J. Carr. 1994. Herd prevalence and geographic distribution of, and risk factors for, bovine paratuberculosis in Wisconsin. *JAVMA* 204:636–641.
- Correia-Gomes, C., D. Mendonça, and J. Niza-Ribeiro. 2010. Risk associations to milk ELISA result for paratuberculosis in dairy cows in northern Portugal using a multilevel regression model. *Rev. Med. Vet. (Toulouse)* 161:295.
- Curtis, C. R., J. M. Scarlett, H. N. Erb, and M. E. White. 1988. Path model of individual-calf risk factors for calfhood morbidity and mortality in New York Holstein herds. *Prev. Vet. Med.* 6:43–62.
- Dauguschies, A., and M. Najdrowski. 2005. Eimeriosis in cattle: Current understanding. *J. Vet. Med. B* 52:417–427.
- De Boer, M. W., S. J. LeBlanc, J. Dubuc, S. Meier, W. Heuwieser, S. Arlt, R. O. Gilbert, and S. McDougall. 2014. Invited review: Systematic review of diagnostic tests for reproductive-tract infection and inflammation in dairy cows. *J. Dairy Sci.* 97:3983–3999.
- de Passillé, A. M., P. G. Marnet, H. Lapierre, and J. Rushen. 2008. Effects of twice-daily nursing on milk ejection and milk yield during nursing and milking in dairy cows. *J. Dairy Sci.* 91:1416–1422.

- Delafosse, A., C. Chartier, M. C. Dupuy, M. Dumoulin, I. Pors, and C. Paraud. 2015. *Cryptosporidium parvum* infection and associated risk factors in dairy calves in western France. *Prev. Vet. Med.* 118:406–412.
- Dieguez, F. J., I. Arnaiz, M. L. Sanjuan, M. J. Vilar, and E. Yus. 2008. Management practices associated with *Mycobacterium avium* ssp. *paratuberculosis* infection and the effects of the infection on dairy herds. *Vet. Rec.* 162:614–617.
- Donat, K., M. Schmidt, H. Köhler, and C. Sauter-Louis. 2016. Management of the calving pen is a crucial factor for paratuberculosis control in large dairy herds. *J. Dairy Sci.* 99:3744–3752.
- Duranti, A., S. M. Caccio, E. Pozio, E. A. Di, C. M. De, A. Battisti, and P. Scaramozzino. 2009. Risk factors associated with *Cryptosporidium parvum* infection in cattle. *Zoonoses Public Health* 56:176–182.
- Edwards, S. A., and D. M. Broom. 1979. The period between birth and first suckling in dairy calves. *Res. Vet. Sci.* 26:255–256.
- Fallon, R. J., and F. J. Harte. 1980. Methods of feeding milk to young calves. *Irish J. Agric. Res.* 19:67–74.
- Faubert, G. M., and Y. Litvinsky. 2000. Natural transmission of *Cryptosporidium parvum* between dams and calves on a dairy farm. *J. Parasitol.* 86:495–500.
- Flower, F. C., and D. M. Weary. 2003. The effects of early separation on the dairy cow and calf. *Anim. Welf.* 12:339–348.
- Francoz, D., S. Buczinski, A. M. Bélanger, G. Forté, O. Labrecque, D. Tremblay, V. Wellemans, and J. Dubuc. 2015. Respiratory pathogens in Quebec dairy calves and their relationship with clinical status, lung consolidation, and average daily gain. *J. Vet. Intern. Med.* 29:381–387.
- Franklin, S. T., D. M. Amaral-Phillips, J. A. Jackson, and A. A. Campbell. 2003. Health and performance of Holstein calves that suckled or were hand-fed colostrum and were fed one of three physical forms of starter. *J. Dairy Sci.* 86:2145–2153.
- Fröberg, S., A. Aspegren-Guldorff, I. Olsson, B. Marin, C. Berg, C. Hernandez, C. S. Galina, L. Lidfors, and K. Svennersten-Sjaunja. 2007. Effect of restricted suckling on milk yield, milk composition and udder health in cows and behaviour and weight gain in calves, in dual-purpose cattle in the tropics. *Trop. Anim. Health Prod.* 39:71–81.
- Fröberg, S., E. Gratte, K. Svennersten-Sjaunja, I. Olsson, C. Berg, A. Orihuela, C. S. Galina, B. Garcia, and L. Lidfors. 2008. Effect of suckling ('restricted suckling') on dairy cows' udder health and milk let-down and their calves' weight gain, feed intake and behaviour. *Appl. Anim. Behav. Sci.* 113:1–14.
- Fulkerson, W. J., R. D. Hooley, and J. K. Findlay. 1978. Improvement in milk production of first calf heifers by multiple suckling. *Aust. J. Agric. Res.* 29:351–357.
- Garro, C. J., G. E. Morici, M. E. Utgés, M. L. Tomazic, and L. Schmittger. 2016. Prevalence and risk factors for shedding of *Cryptosporidium* spp. oocysts in dairy calves of Buenos Aires province, Argentina. *Parasite Epidemiol. Control* 1:36–41.
- Godden, S. 2008. Colostrum management for dairy calves. *Vet. Clin. North Am. Food Anim. Pract.* 24:19–39.
- González-Sedano, M., B. Marin-Mejia, M. I. Maranto, A. C. Leme de Magalhães-Labarthea, and M. A. Alonso-Diaz. 2010. Effect of residual calf suckling on clinical and sub-clinical infections of mastitis in dual-purpose cows: Epidemiological measurements. *Res. Vet. Sci.* 89:362–366.
- Goodger, W. J., M. T. Collins, K. V. Nordlund, C. Eisele, J. Pelletier, C. B. Thomas, and D. C. Sockett. 1996. Epidemiologic study of on-farm management practices associated with prevalence of *Mycobacterium paratuberculosis* infections in dairy cattle. *J. Am. Vet. Med. A* 208:1877–1881.
- Gulliksen, S. M., E. Jor, K. I. Lie, T. Løken, J. Åkerstedt, and O. Østerås. 2009a. Respiratory infections in Norwegian dairy calves. *J. Dairy Sci.* 92:5139–5146.
- Gulliksen, S. M., K. I. Lie, T. Loken, and O. Osteras. 2009b. Calf mortality in Norwegian dairy herds. *J. Dairy Sci.* 92:2782–2795.
- Hartman, D. A., R. W. Everett, S. T. Slack, and R. G. Warner. 1974. Calf mortality. *J. Dairy Sci.* 57:576–578.
- Jamali, H., H. W. Barkema, M. Jacques, E. M. Lavallée-Bourget, F. Malouin, V. Saini, H. Stryhn, and S. Dufour. 2018. Invited review: Incidence, risk factors, and effects of clinical mastitis recurrence in dairy cows. *J. Dairy Sci.* 101:4729–4746.
- Jenny, B. F., G. E. Gramling, and T. M. Glaze. 1981. Management factors associated with calf mortality in South Carolina dairy herds. *J. Dairy Sci.* 64:2284–2289.
- Johnsen, J. F., K. A. Zipp, T. Kälber, A. M. de Passille, U. Knierim, K. Barth, and C. M. Mejdell. 2016. Is rearing calves with the dam a feasible option for dairy farms? Current and future research. *Appl. Anim. Behav. Sci.* 181:1–11.
- Johnson-Ifearulundu, Y. J., and J. B. Kaneene. 1998. Management-related risk factors for *M. paratuberculosis* infection in Michigan, USA, dairy herds. *Prev. Vet. Med.* 37:41–54.
- Kälber, T., and K. Barth. 2014. Practical implications of suckling systems for dairy calves in organic production systems—A review. *Landbauforschung-Ger.* 64:45–58.
- Kamboj, M., and A. Kumar. 2013. Effect of weaning on performance and behaviour of calves and their dams in dairy cows—A review. *Indian J. Anim. Sci.* 83:991–997.
- Khan, M. A., D. M. Weary, and M. A. G. von Keyserlingk. 2011. Invited review: Effects of milk ration on solid feed intake, weaning, and performance in dairy heifers. *J. Dairy Sci.* 94:1071–1081.
- Klein, D., M. Alispahic, D. Sofka, M. Iwersen, M. Drillich, and F. Hilbert. 2013. Prevalence and risk factors for shedding of thermophilic *Campylobacter* in calves with and without diarrhea in Austrian dairy herds. *J. Dairy Sci.* 96:1203–1210.
- Kovalcik, K., M. Kovalcikova, and V. Brestensky. 1980. Comparison of the behaviour of newborn calves housed with the dam and in the calf-house. *Appl. Anim. Ethol.* 6:377–380.
- Krohn, C. C., J. Foldager, and L. Mogensen. 1999. Long-term effect of colostrum feeding methods on behaviour in female dairy calves. *Acta Agric. Scand. A* 49:57–64.
- Krohn, C. C., B. Jonasen, and L. Munksgaard. 1990. Cow-calf relations. 2: The effect of 0 vs. 5 days suckling on behaviour, milk production and udder health of cows in different stabling. Report No. 678. National Institute of Animal Science, Foulum, Denmark.
- Kvac, M., M. Kouba, and J. Vitovec. 2006. Age-related and housing-dependence of *Cryptosporidium* infection of calves from dairy and beef herds in South Bohemia, Czech Republic. *Vet. Parasitol.* 137:202–209.
- Lidfors, L. M. 1996. Behavioural effects of separating the dairy calf immediately or 4 days post-partum. *Appl. Anim. Behav. Sci.* 49:269–283.
- Little, D. A., F. M. Anderson, and J. W. Durkin. 1991. Influence of partial suckling of crossbred dairy cows on milk offtake and calf growth in the Ethiopian Highlands. *Trop. Anim. Health Prod.* 23:108–114.
- Lombard, J. E. 2011. Epidemiology and economics of *paratuberculosis*. *Vet. Clin. North Am. Food Anim. Pract.* 27:525–535.
- Lundborg, G. K., E. C. Svensson, and P. A. Oltenacu. 2005. Herd-level risk factors for infectious diseases in Swedish dairy calves aged 0–90 days. *Prev. Vet. Med.* 68:123–143.
- Maldonado-Camargo, S., E. R. Atwill, J. A. Saltijeral-Oaxaca, and L. C. Herrera-Alonso. 1998. Prevalence of and risk factors for shedding of *Cryptosporidium parvum* in Holstein Friesian dairy calves in central Mexico. *Prev. Vet. Med.* 36:95–107.
- Marcé, C., P. Ezanno, H. Seegers, D. U. Pfeiffer, and C. Fourichon. 2011. Within-herd contact structure and transmission of *Mycobacterium avium* subspecies *paratuberculosis* in a persistently infected dairy cattle herd. *Prev. Vet. Med.* 100:116–125.
- Margerison, J. K., T. R. Preston, and C. J. C. Phillips. 2002. Restricted suckling of tropical dairy cows by their own calf or other cows' calves. *J. Anim. Sci.* 80:1663–1670.
- McAloon, C. G., P. Whyte, L. O'Grady, I. Lorenz, M. G. Green, I. Hogan, A. Johnson, and M. L. Doherty. 2016. Relationship between selected perinatal paratuberculosis management interventions and passive transfer of immunity in dairy calves. *Vet. Rec.* 179:47.
- McGuirk, S. M. 2008. Disease management of dairy calves and heifers. *Vet. Clin. North Am. Food Anim. Pract.* 24:139–153.

- Mdegela, R., L. Kusiluka, A. M. Kapaga, E. Karimuribo, F. M. Turuka, A. Bundala, F. Kivaria, B. Kabula, A. Manjurano, T. Loken, and D. M. Kambarage. 2004. Prevalence and determinants of mastitis and milk-borne zoonoses in smallholder dairy farming sector in Kibaha and Morogoro districts in Eastern Tanzania. *J. Vet. Med. B Infect. Dis. Vet. Public Health* 51:123–128.
- Meagher, R. K., A. Beaver, D. M. Weary, and M. A. G. von Keyserlingk. 2019. Invited review: A systematic review of the effects of prolonged cow–calf contact on behavior, welfare, and productivity. *J. Dairy Sci.* 102:5765–5783. <https://doi.org/10.3168/jds.2018-16021>.
- Mejia, C. E., T. R. Preston, and P. Fajersson. 1998. Effects of restricted suckling versus artificial rearing on milk production, calf performance and reproductive efficiency of dual purpose Mpwapwa cattle in a semi-arid climate. *Livest. Res. Rural Dev.* 10:8.
- Mendoza, A., D. Cavestary, G. Roig, J. Ariztia, C. Pereira, A. La Manna, D. A. Contreras, and C. S. Galina. 2010. Effect of restricted suckling on milk yield, composition and flow, udder health, and postpartum anoestrus in grazing holstein cows. *Livest. Sci.* 127:60–66.
- Metz, J., and J. H. M. Metz. 1986. Maternal influence on defecation and urination in the newborn calf. *Appl. Anim. Behav. Sci.* 16:325–333.
- Mohammed, H. O., S. E. Wade, and S. Schaaf. 1999. Risk factors associated with *Cryptosporidium parvum* infection in dairy cattle in Southeastern New York state. *Vet. Parasitol.* 83:1–13.
- Muktar, Y., G. Mamo, B. Tesfaye, and D. Belina. 2015. A review on major bacterial causes of calf diarrhea and its diagnostic method. *J. Vet. Med. Anim. Health* 7:173–185.
- Mulligan, F. J., and M. L. Doherty. 2008. Production diseases of the transition cow. *Vet. J.* 176:3–9.
- Mulligan, F. J., L. O'grady, D. A. Rice, and M. L. Doherty. 2006. A herd health approach to dairy cow nutrition and production diseases of the transition cow. *Anim. Reprod. Sci.* 96:331–353.
- Muskens, J., A. Elbers, H. J. Van Weering, and J. Noordhuizen. 2003. Herd management practices associated with paratuberculosis seroprevalence in Dutch dairy herds. *J. Vet. Med. B Infect. Dis. Vet. Public Health* 50:372–377.
- Nielsen, S. S., and N. Toft. 2011. Effect of management practices on paratuberculosis prevalence in Danish dairy herds. *J. Dairy Sci.* 94:1849–1857.
- Noakes, D. 1997. *Fertility and Obstetrics in Cattle*, Edition 2. Blackwell Science, Oxford, UK.
- Nocek, J. E., D. G. Braund, and R. G. Warner. 1984. Influence of neonatal colostrum administration, immunoglobulin, and continued feeding of colostrum on calf gain, health, and serum protein. *J. Dairy Sci.* 67:319–333.
- Norton, S., C. Heuer, and R. Jackson. 2009. A questionnaire-based cross-sectional study of clinical Johne's disease on dairy farms in New Zealand. *N. Z. Vet. J.* 57:34–43.
- Pelan-Mattocks, L. S., M. E. Kehrl Jr., T. A. Casey, and J. P. Goff. 2000. Fecal shedding of coliform bacteria during the periparturient period in dairy cows. *Am. J. Vet. Res.* 61:1636–1638.
- Perez, E., J. P. Noordhuizen, L. A. Van Wuijkhuise, and E. N. Stassen. 1990. Management factors related to calf morbidity and mortality rates. *Livest. Prod. Sci.* 25:79–93.
- Pillars, R. B., D. L. Grooms, J. C. Gardiner, and J. B. Kaneene. 2011. Association between risk-assessment scores and individual-cow Johne's disease-test status over time on seven Michigan, USA dairy herds. *Prev. Vet. Med.* 98:10–18.
- Quigley, J. D., K. R. Martin, D. A. Bemis, L. N. D. Potgieter, C. R. Reinemeyer, B. W. Rohrbach, H. H. Dowlen, and K. C. Lamar. 1994. Effects of housing and colostrum feeding on the prevalence of selected infectious organisms in feces of Jersey calves. *J. Dairy Sci.* 77:3124–3131.
- Quigley, J. D., K. R. Martin, D. A. Bemis, L. N. D. Potgieter, C. R. Reinemeyer, B. W. Rohrbach, H. H. Dowlen, and K. C. Lamar. 1995. Effects of housing and colostrum feeding on serum immunoglobulins, growth, and fecal scores of Jersey calves. *J. Dairy Sci.* 78:893–901.
- Rajala, P., and H. Castrén. 1995. Serum immunoglobulin concentrations and health of dairy calves in two management systems from birth to 12 weeks of age. *J. Dairy Sci.* 78:2737–2744.
- Ridge, S. E., I. M. Baker, and M. Hannah. 2005. Effect of compliance with recommended calf-rearing practices on control of bovine Johne's disease. *Aust. Vet. J.* 83:85–90.
- Rigby, C., J. Ugarte, and R. Boucourt. 1976. Rearing dairy calves by restricted suckling. VII. Effect on mastitis development caused by *Staphylococcus aureus*. *Can. J. Agric. Sci.* 10:35–40.
- Roth, B. A., K. Barth, L. Gygax, and E. Hillmann. 2009. Influence of artificial vs. mother-bonded rearing on sucking behaviour, health and weight gain in calves. *Appl. Anim. Behav. Sci.* 119:143–150.
- Sanh, M. V., T. R. Preston, and P. Fajersson. 1995. Effects of restricted suckling versus artificial rearing on performance and fertility of *Bos taurus* and *Bos indicus* cows and calves in Tanzania. *Livest. Res. Rural Dev.* 6:29.
- Sanh, M. V., T. R. Preston, and L. V. Ly. 1997. Effects of restricted suckling versus artificial rearing on performance and fertility of crossbreed F1 (Holstein Friesian x local) cows and calves in Vietnam. *Livest. Res. Rural Dev.* 6:29.
- Sargeant, J. M., and A. M. O'Connor. 2014. Issues of reporting in observational studies in veterinary medicine. *Prev. Vet. Med.* 113:323–330.
- Seegers, H., C. Fourichon, and F. Beaudeau. 2003. Production effects related to mastitis and mastitis economics in dairy cattle herds. *Vet. Res.* 34:475–491.
- Selman, I. E., A. D. McEwan, and E. W. Fisher. 1971. Absorption of immune lactoglobulin by newborn dairy calves. Attempts to produce consistent immune lactoglobulin absorptions in newborn dairy calves using standardised methods of colostrum feeding and management. *Res. Vet. Sci.* 12:205–210.
- Stěhulová, I., L. Lidfors, and M. Špinka. 2008. Response of dairy cows and calves to early separation: Effect of calf age and visual and auditory contact after separation. *Appl. Anim. Behav. Sci.* 110:144–165.
- Stewart, S., S. Godden, R. Bey, P. Rapnicki, J. Fetrow, R. Farnsworth, M. Scanlon, Y. Arnold, L. Clow, K. Mueller, and C. Ferrouillet. 2005. Preventing bacterial contamination and proliferation during the harvest, storage, and feeding of fresh bovine colostrum. *J. Dairy Sci.* 88:2571–2578.
- Stott, G. H., D. B. Marx, B. E. Menefee, and G. T. Nightengale. 1979. Colostral immunoglobulin transfer in calves. IV. Effect of suckling. *J. Dairy Sci.* 62:1908–1913.
- Svensson, C., K. Lundborg, U. Emanuelson, and S. Olsson. 2003. Morbidity in Swedish dairy calves from birth to 90 days of age and individual calf-level risk factors for infectious diseases. *Prev. Vet. Med.* 58:179–197.
- Tavornpanich, S., W. O. Johnson, R. J. Anderson, and I. A. Gardner. 2008. Herd characteristics and management practices associated with seroprevalence of *Mycobacterium avium* ssp. *paratuberculosis* infection in dairy herds. *Am. J. Vet. Res.* 69:904–911.
- Thomas, G. W., S. A. Spiker, and F. Mickan. 1981. Influence of suckling by Friesian cows on milk production and anoestrus. *Aust. J. Exp. Agric.* 21:5–11.
- Tiwari, A., J. A. VanLeeuwen, I. R. Dohoo, G. P. Keefe, J. P. Haddad, H. M. Scott, and T. Whiting. 2009. Risk factors associated with *Mycobacterium avium* ssp. *paratuberculosis* seropositivity in Canadian dairy cows and herds. *Prev. Vet. Med.* 88:32–41.
- Trotz-Williams, L. A., K. E. Leslie, and A. S. Peregrine. 2008b. Passive immunity in Ontario dairy calves and investigation of its association with calf management practices. *J. Dairy Sci.* 91:3840–3849.
- Trotz-Williams, L. A., S. W. Martin, K. E. Leslie, T. Duffield, D. V. Nycham, and A. S. Peregrine. 2008a. Association between management practices and within-herd prevalence of *Cryptosporidium parvum* shedding on dairy farms in southern Ontario. *Prev. Vet. Med.* 83:11–23.
- Trotz-Williams, L. A., S. Wayne Martin, K. E. Leslie, T. Duffield, D. V. Nycham, and A. S. Peregrine. 2007. Calf-level risk factors for neonatal diarrhea and shedding of *Cryptosporidium parvum* in Ontario dairy calves. *Prev. Vet. Med.* 82:12–28.

- USDA. 2007. National Health Monitoring System. Dairy 2007 Part IV: Reference of Dairy Cattle Health and Management Practices in the United States, 2007. [https://www.aphis.usda.gov/animal\\_health/nahms/dairy/downloads/dairy07/Dairy07\\_allpubs.pdf](https://www.aphis.usda.gov/animal_health/nahms/dairy/downloads/dairy07/Dairy07_allpubs.pdf).
- USDA. 2010. Uniform Program Standards for the Voluntary Bovine Johne's Disease Control Program. [https://johnes.org/handouts/files/USDA\\_Program\\_Standards\\_Sept-2010.pdf](https://johnes.org/handouts/files/USDA_Program_Standards_Sept-2010.pdf).
- USDA. 2016. Dairy 2014, Dairy Cattle Management Practices in the United States, 2014. USDA-APHIS-VS-CEAH-NAHMS. Accessed Dec. 12, 2018. [https://www.aphis.usda.gov/animal\\_health/nahms/dairy/downloads/dairy14/Dairy14\\_dr\\_PartI.pdf](https://www.aphis.usda.gov/animal_health/nahms/dairy/downloads/dairy14/Dairy14_dr_PartI.pdf).
- USDA. 2018. National Health Monitoring System. Dairy 2014: Health and Management Practices on U.S. Dairy Operations, 2014. Accessed Aug. 10, 2018. [https://www.aphis.usda.gov/animal\\_health/nahms/dairy/downloads/dairy14/Dairy14\\_dr\\_PartIII.pdf](https://www.aphis.usda.gov/animal_health/nahms/dairy/downloads/dairy14/Dairy14_dr_PartIII.pdf).
- Ventorp, M., and P. Michanek. 1992. The importance of udder and teat conformation for teat seeking by the newborn calf. *J. Dairy Sci.* 75:262–268.
- Wagenaar, J. P. T. M., P. Klocke, G. Butler, G. Smolders, J. H. Nielsen, A. Canever, and C. Leifert. 2011. Effect of production system, alternative treatments and calf rearing system on udder health in organic dairy cows. *NJAS Wagen. J. Life Sci.* 58:157–162.
- Wagenaar, J. P. T. M., and J. Langhout. 2007. Practical implications of increasing 'Natural living' through suckling systems in organic dairy calf rearing. *NJAS Wagen. J. Life Sci.* 54:375–386.
- Walsh, J. P. 1974. Milk secretion in machine-milked and suckled cows. *Isr. J. Agric. Res.* 13:77–89.
- Waltner-Toews, D., S. W. Martin, and A. H. Meek. 1986. Dairy calf management, morbidity and mortality in Ontario Holstein herds. III. Association of management with morbidity. *Prev. Vet. Med.* 4:137–158.
- Weary, D. M., and B. Chua. 2000. Effects of early separation on the dairy cow and calf: 1. Separation at 6 h, 1 day and 4 days after birth. *Appl. Anim. Behav. Sci.* 69:177–188.
- Wells, S. J., and B. Wagner. 2000. Herd-level risk factors for infection with *Mycobacterium paratuberculosis* in US dairies and association between familiarity of the herd manager with the disease or prior diagnosis of the disease in that herd and use of preventive measures. *J. Am. Vet. Med. Assoc.* 216:1450.
- Wells, S. J., D. A. Dargatz, and S. L. Ott. 1996. Factors associated with mortality to 21 days of life in dairy heifers in the United States. *Prev. Vet. Med.* 29:9–19.
- Whiting, P., J. Savović, J. P. Higgins, D. M. Caldwell, B. C. Reeves, B. Shea, P. Davies, J. Kleijnen, and R. Churchill. 2016. ROBIS: A new tool to assess risk of bias in systematic reviews was developed. *J. Clin. Epidemiol.* 69:225–234.

## APPENDIX

### Bias Assessment of Systematic Review Methodology

Using material sourced from domains 1 and 2 of ROBIS (Risk of Bias in Systematic Reviews, Whiting et al., 2016), we have attempted to identify and address weaknesses in our methodology.

We restricted our initial literature screening to a single search engine (WoS), as different search engines employ distinct criteria and weightings to generate search results. In addition, the search terms themselves require alteration across different databases; certain search engines automatically account for similar terms whereas others do not. It therefore becomes difficult to integrate reference lists that have been generated based upon unique algorithms. We considered WoS to be the best available resource for our search due to its status as a human-curated database with itemized, structured entries. Additionally, WoS only provides results from journals indexed by Clarivate Analytics and filters out non-peer-reviewed literature; however, articles from well-known, high-impact-factor journals may be over-represented in our results.

The use of a single search engine may be considered a weakness of the present review. Thus, we have attempted to validate this approach by conducting targeted searches in PubMed to ensure no additional articles were discoverable. First, we ran the exact searches as listed in Materials and Methods in PubMed. Results indicated that no exact match was found for the phrases “reared by the dam,” “reared by cows,” “reared by the mother,” and “calf contact with adults.” Therefore, these phrases were removed to ensure that PubMed

would not search within the quoted phrases. Our final PubMed search included the following fixed set: (“cow-calf” OR “cow/calf” OR “dam-calf” OR “dam/calf” OR “dam rearing” OR “suckling system” OR “mother rearing”) AND (nurs\* OR suckl\* OR separation OR contact OR “risk factor\*”) AND (calf OR calves). In addition, the following targeted terms were included: (scour\* OR diarr\*) OR (cryptosporidi\*) OR (“Johne’s” OR paratuberculosis) OR (pneumonia OR respiratory) OR (immunity OR “passive transfer”) OR (disease OR diseases OR diseased OR infection OR health OR morbidity OR mortality) OR (mastitis OR “intramammary infection\*”) OR (“udder health”). A total of 61 articles were uncovered in these searches; 42 of these were duplicates from our WoS searches. Of the 19 unique articles, 10 pertained to beef cattle or other species and were therefore excluded. The titles and abstracts of the 9 remaining articles were scanned, and 7 were considered to be irrelevant to the main research question. Two full texts were reviewed and neither study made a direct comparison between cow or calf health in suckling or cow-calf contact systems and conventional rearing. PubMed searches were then conducted for all terms that yielded no results in WoS (as listed in Materials and Methods). No additional relevant results were identified.

The “Topic” field of WoS generates searches of the article title, abstract, and keywords, but not the body of the manuscript. Papers assessing a variety of risk factors for a given disease may therefore have been overlooked, particularly if the risk factor of interest was not significantly associated with cow-calf contact.

Thus, it is conceivable that the results of the WoS queries reported here demonstrate a bias away from the null. Fortunately, this bias is expected to be present in both directions and is therefore unlikely to affect overall conclusions.

To counter this undesired selectivity, we searched within reference lists to uncover additional papers. It must be acknowledged that the authors of these papers may be more inclined to cite papers in agreement with their own conclusions, but this type of selection bias is likely to arise in any systematic review using reference lists as additional resources. Similarly, although we placed no restriction on publication year, we did not locate any manuscripts published in 2017 or 2018, since very recent papers tend to have fewer citations (from even more recent manuscripts).

In the initial scans of the reference lists, we only selected papers with titles that alluded to a potential comparison of cow or calf health in different rearing conditions. For example, a hypothetical paper titled “Management decisions linked to heightened prevalence of *Cryptosporidium* oocysts” would have been considered, whereas a paper titled “*Cryptosporidium parvum* in cattle” would not have been investigated further. We may have missed papers that, in spite of a more general title, had in fact addressed the topic in question. This assessment is unavoidably qualitative. It is not possible to measure the number of primary literature articles that may have been overlooked due to our methodology; this highlights the importance of accurate and descriptive key words in manuscripts as emphasized by De Boer et al. (2014).

We excluded conference proceedings (both papers and abstracts), as well as book chapters, as we could not be certain that these sources had been peer reviewed. We also excluded literature in languages other than English, as we were unable to critically assess the methods and evaluate the results. We are unable to determine to what extent these exclusions affected the conclusions of this review.

### Quality Assessment of Included Articles

To provide an inclusive overview of the topic in question, no exclusion criteria were developed concerning sample size, study quality, or journal quality. Here we provide a quality assessment of the included journal articles on the basis of study design, thoroughness of reporting, and potential biases.

In the field of human medicine, randomized controlled trials are typically considered the gold standard, and observational research is sometimes excluded from systematic reviews. The number of randomized controlled

trials in agriculture and veterinary medicine is comparatively low (Sargeant and O’Connor, 2014), so observational studies are often included out of necessity. With reference to study design, 28 articles in our systematic review (40%) were experimental or quasi-experimental and 42 (60%) were observational. Randomization procedures for animals were described or referenced in 13 studies (46% of the experimental studies), but only 2 included some type of blinding (blinding was likely not feasible for some measures, given the obvious differences in management between groups with different levels of maternal contact). Random assignment of animals to treatment groups was described in 14 of the single-herd trials (48%), and random selection of herds (or a random selection of animals within herds) was described in 24 (59%) of the multi-herd studies.

In Tables 1 to 6, we have reported the authors’ conclusions concerning their data, regardless of whether these conclusions were tested using inferential statistics. Of the 70 included papers, 16 (23%) either did not confirm their conclusions using statistical testing or failed to report results. In these instances, the reported results often reflected secondary research objectives or descriptive information. As per the inclusion criteria, papers investigating other aspects of cow and calf contact or separation as a primary objective were not excluded, as long as health-related measures were also reported. A further 3 studies (4%) reported conclusions based upon a 0.1  $\alpha$ -level threshold. These papers are indicated with footnotes in their respective tables.

Study limitations, potential biases, and sources of error were formally discussed in 16 manuscripts (23%), although only 1 paper included an assessment of inter-observer reliability. Some level of missing data was reported in 15 studies (21%), with explanation for the missing data provided in 7 of these. Seven of the single-herd studies (24%) did not contain complete information on the type and duration of cow-calf contact and feeding regimens for control groups. Interestingly, 7 (10%) of papers failed to provide information on country or region in which the study was conducted (although the authors’ affiliations and the location of laboratories used for sample analysis most often suggested that these studies were conducted in the United States). An additional 16 studies (23%) did not include any information pertaining to cattle breed (of these, 15 were multi-herd trials).

For manuscripts addressing Johne’s disease, cryptosporidiosis, or mastitis, 37 (90%) adequately discussed the diagnostic test used, although only 13 (32%) cited the sensitivity or specificity (or both) of the implemented diagnostic. Of the 5 articles in the immunity section that made reference to FPT, only 2 (40%) provided

a full definition for the condition and 2 (40%) offered rationales or citations supporting the diagnostic cut points implemented.

### ***Inconsistencies in Methods and Common Problems***

In the single-herd studies, there was a high variability in what constituted control groups in terms of the level of maternal contact. For example, in 10 of these studies, control calves were given less than 24 h of contact with the dam; in a further 9 studies, control animals were provided with a minimum of 3 d of unrestricted dam-calf contact. The feeding regimens were also different across studies. These discrepancies are likely to have affected conclusions, and thus it is difficult to make direct comparisons between articles. Even in studies seemingly describing the same treatment (e.g., “restricted suckling”), the implementation of these treatments was variable. For example, in Mejia et al. (1998) calves in the “restricted suckling” group were permitted suckling for 30 min after milking (with one quarter left unmilked), twice daily for 6 mo. In contrast, in Fulkerson et al. (1978), calves were reunited with the dam once per day (for an unspecified amount of time) for approximately 1 mo. Further, in several studies (e.g., Fallon and Harte, 1980; Nocek et al., 1984), dam-calf suckling is referenced, but the duration of contact between cows and calves in the control group is not described.

Several of the older studies had low sample sizes and are more accurately interpreted as case reports. At one extreme, Rigby et al. (1976) presented conclusions regarding mastitis based upon a single cow nursing her calf; however, most of the other studies with small sample sizes were able to enroll at least 30 animals.

Due to the variability in study type, methodology, use of controls, and the amount of information provided, it was not feasible to conduct a meta-analysis. We provided risk ratios, prevalence ratios, and odds ratios where possible, but the variation in study methodology prevented us from generating a meaningful estimate of the overall magnitude of the effects considered. Instead, only the direction of association was highlighted, and our discussion is mainly based upon on the number of positive and negative associations. A weakness of this approach is that it weighs equally all studies, regardless of sample size, effect size, and any weaknesses in design and interpretation.

It is important to consider that no temporal relationship between management factors (e.g., cow-calf separation) and outcomes (e.g., disease) has been examined in the included cross-sectional studies. Thus, management decisions could plausibly have been implemented in response to the disease in question, rather than representing a risk factor for disease.