

*Molecular and phylogenetic analysis
reveals new diversity of Dunaliella salina
from hypersaline environments*

Article

Published Version

Creative Commons: Attribution 4.0 (CC-BY)

Open Access

Highfield, A., Ward, A., Pipe, R. and Schroeder, D. C. (2021) Molecular and phylogenetic analysis reveals new diversity of *Dunaliella salina* from hypersaline environments. *Journal of the Marine Biological Association of the United Kingdom*, 101 (1). pp. 27-37. ISSN 0025-3154 doi: <https://doi.org/10.1017/S0025315420001319> Available at <https://centaur.reading.ac.uk/98071/>

It is advisable to refer to the publisher's version if you intend to cite from the work. See [Guidance on citing](#).

To link to this article DOI: <http://dx.doi.org/10.1017/S0025315420001319>

Publisher: Cambridge University Press

All outputs in CentAUR are protected by Intellectual Property Rights law, including copyright law. Copyright and IPR is retained by the creators or other copyright holders. Terms and conditions for use of this material are defined in the [End User Agreement](#).

www.reading.ac.uk/centaur

CentAUR

Central Archive at the University of Reading

Reading's research outputs online

Original Article

Cite this article: Highfield A, Ward A, Pipe R, Schroeder DC (2021). Molecular and phylogenetic analysis reveals new diversity of *Dunaliella salina* from hypersaline environments. *Journal of the Marine Biological Association of the United Kingdom* **101**, 27–37. <https://doi.org/10.1017/S0025315420001319>

Received: 9 June 2020

Revised: 21 December 2020

Accepted: 21 December 2020

First published online: 22 January 2021

Key words:

Diversity; *Dunaliella salina*; ITS; LSU; phylogeny; *rbcL*; SSU; *tufA*

Author for correspondence:

Andrea Highfield,

E-mail: ancba@mba.ac.uk;

Declan C. Schroeder,

E-mail: dcschroe@umn.edu

© The Author(s), 2021. Published by Cambridge University Press on behalf of Journal of the Marine Biological Association of the United Kingdom. This is an Open Access article, distributed under the terms of the Creative Commons Attribution licence (<http://creativecommons.org/licenses/by/4.0/>), which permits unrestricted re-use, distribution, and reproduction in any medium, provided the original work is properly cited.



Molecular and phylogenetic analysis reveals new diversity of *Dunaliella salina* from hypersaline environments

Andrea Highfield¹ , Angela Ward¹, Richard Pipe¹ and Declan C. Schroeder^{1,2,3}

¹The Marine Biological Association of the United Kingdom, The Laboratory, Citadel Hill, Plymouth PL1 2PB, UK;

²School of Biological Sciences, University of Reading, Reading RG6 6LA, UK and ³Veterinary Population Medicine, College of Veterinary Medicine, University of Minnesota, St Paul, MN 55108, USA

Abstract

Twelve hyper- β carotene-producing strains of algae assigned to the genus *Dunaliella salina* have been isolated from various hypersaline environments in Israel, South Africa, Namibia and Spain. Intron-sizing of the SSU rDNA and phylogenetic analysis of these isolates were undertaken using four commonly employed markers for genotyping, LSU rDNA, ITS, *rbcL* and *tufA* and their application to the study of *Dunaliella* evaluated. Novel isolates have been identified and phylogenetic analyses have shown the need for clarification on the taxonomy of *Dunaliella salina*. We propose the division of *D. salina* into four sub-clades as defined by a robust phylogeny based on the concatenation of four genes. This study further demonstrates the considerable genetic diversity within *D. salina* and the potential of genetic analyses for aiding in the selection of prospective economically important strains.

Introduction

Dunaliella (Chlorophyceae, Dunaliellales) is a genus of algae with immense economic potential owing to its production of an array of exploitable compounds, including β -carotene, glycerol and phytosterols (reviewed by Avron & Ben-Amotz, 1992). Species within this genus include halophilic and halotolerant strains and are frequently encountered in hypersaline environments. *Dunaliella* lacks a rigid cell wall and has a flexible cell membrane capable of rapidly changing shape in response to osmotic stress (Oliveira *et al.*, 1980) and this can confound morphological identification. Cell size is highly variable with differences being related to growth conditions, e.g. nutrients, light intensity and salt concentration (Borowitzka & Brown, 1974), and can also vary within the same culture, for example *D. salina* (Teodoresco, 1905) can exhibit 5–29 μm cell length and 3.8–20.3 μm width (Borowitzka & Siva, 2007).

Early observations and descriptions of the genus *Dunaliella* laid the foundations of a well characterised group (Teodoresco, 1905; Lerche, 1937; Massjuk, 1973) with the family Dunaliellaceae comprising of four sections of *Dunaliella*, as described by Massjuk (1973); section Tertiolectae which are oligo-euhaline, do not accumulate carotenes and grow at an optimum salinity of <6% NaCl; section *Dunaliella* which are halophilic species that accumulate carotenes; section *Virides* which are hyperhaline, always green and radially symmetrical; and *Peirceinae* which are hyperhaline, always green but cells are bilaterally symmetrical. Presently, within the section *Dunaliella* are three accepted species, *D. salina*, *D. parva* and *D. pseudosalina* as well as *D. bardawil*. The latter has been debated as to whether it should actually be deemed to be a separate species, or is in fact *D. salina* considering its characteristics match the species description originally specified by Teodoresco (1905) (Borowitzka & Siva, 2007; González *et al.*, 2009).

Dunaliella salina has been found to be able to tolerate salt saturation of approximately 5.5 M NaCl (reviewed by Avron & Ben-Amotz, 1992). It is a particularly polymorphic species, with cell physiology related to abiotic factors. Cells can be pigmented green or red depending on the amount of β -carotene accumulated and under high stress conditions, members of this species can accumulate >5% β -carotene dry weight (Ben-Amotz & Avron, 1983). *D. bardawil* was isolated from a salt pond near Bardawil, Israel in 1976 and was reported to accumulate considerably larger amounts of β -carotene compared to *D. salina*, accumulating β -carotene in membrane-free globules in the interthylakoid spaces of the chloroplast (Ben-Amotz *et al.*, 1982). However, it is now unclear if the strain of *D. salina* used to compare to *D. bardawil* in this study was a good representative of *D. salina*, as subsequent reports have indicated that *D. bardawil* UTEX (Culture Collection of Algae at the University of Texas at Austin) 2538 and *D. salina* UTEX 1644 actually have a similar carotenoid: chlorophyll ratio (Jahnke, 1999). Morphologically it has proven difficult to resolve differences between strains of *D. salina*, however, four formae have previously been described in the literature. *D. salina* spp. *salina* fo. *sibirica*; a species with cells that are broader in the median or anterior region, *D. salina* spp. *salina* fo. *oblonga*; cylindrical cells of 7–28 μm length, 5–13 μm width, *D. salina* spp. *salina* fo. *magna*; cells ovoid with a cell volume >1000 μm^3 and cell length 7.5–29 μm , cell width 7.5–21 μm , and *D. salina* spp. *salina* fo. *salina*; which is similar to *magna* but with smaller cell dimensions (Massjuk & Radchënko, 1973). These formae have primarily been based on cell shape which can

be an ambiguous criterion to use as cell shape can vary considerably based on differing culture conditions.

Genotyping is now considered imperative in aiding the classification of *Dunaliella* species, with the ribosomal markers at the forefront of phylogenetic analyses (e.g. González *et al.*, 2001; Olmos *et al.*, 2009; Bucheim *et al.*, 2010; Assunção *et al.*, 2012), however, other commonly used markers for *Dunaliella* sp. and, indeed other marine algae, include *rbcl* (Preetha *et al.*, 2012) and *tufA* (reviewed by Leliaert *et al.*, 2014). Furthermore, by exploiting the sporadic occurrence of the group I introns within the 18S nuclear SSU rDNA (Wilcox *et al.*, 1992), the SSU marker has been used as a size indicator of different *Dunaliella* species (Olmos-Soto *et al.*, 2002). The absence of introns in the SSU rDNA in the Tertiolectae, one intron in *D. salina*, two introns in *D. bardawil* and one intron for *D. viridis* (that differs to the aforementioned species), have been used as an aid in identifying these species. Moreover, Olmos *et al.* (2009) also used the method as a way to distinguish hyper-producers of β -carotene from other *Dunaliella* sp. and to discriminate between *D. salina* var Teod and *D. salina/bardawil*.

The hypervariable regions, ITS 1, 5.8S rRNA and ITS 2, have been frequently employed by molecular studies of this important algal group (e.g. González *et al.*, 2001) with some studies focusing on the ITS 2 spacer sequence (Assunção *et al.*, 2012). Assunção *et al.* (2012) undertook a comprehensive analysis of *Dunaliella* species using ITS 2, and identified three main clades within the section *Dunaliella*; salina I, salina II, and pseudosalina. Following on from this, however, Assunção *et al.* (2013) allied the pseudosalina clade as putative *D. viridis* and furthermore, in agreement, Borowitzka & Siva (2007), had also previously re-classified members of the pseudosalina clade based on morphology. Notably, they reassigned *D. salina* CCAP 19/3 as *D. viridis*, *D. parva* SAG 19-1 as *D. maritima* and *D. salina* UTEX 200 as *D. viridis* making the pseudosalina clade indeterminate. Assunção *et al.* (2013) concluded that many of the taxonomic assignments of *Dunaliella* strains based on morphological and physiological measurements were flawed and sequence analysis of the ITS 2 was required to affirm the taxonomic affiliation of numerous strains. Moreover, it appeared that some strains sequenced were different to what they were originally designated, potentially as a result of cross-contamination. ITS markers are often favoured as there are many copies in the genome making it easy to amplify and insertions/deletions within the sequence are common meaning there is good variability between species. Other nuclear markers used for the analysis of *Dunaliella* from hypersaline environments include the large subunit rDNA and small subunit rDNA (Bucheim *et al.*, 2010) and these have shown good potential for taxonomic resolution.

In addition to sequencing and phylogeny of the ITS 2, analysis of compensatory base changes (CBC) in the rRNA secondary structure of this region has also been shown to be useful in identifying organisms that are distinct species. A minimum of one CBC (with 93% confidence in plants and fungi) between two organisms can designate them as separate species (Muller *et al.*, 2007). Notably, however, the absence of CBCs does not necessarily mean that they are the same species. Assunção *et al.* (2012) used this method in their investigations of *Dunaliella* sp. but found its application to the delineation of the group limited due to a lack of CBCs identified in isolates known to be distinct species.

Both *rbcl* and *tufA* are plastid genes, with *tufA* encoding elongation factor Tu, and has become more frequently used for molecular studies of algae (Cook *et al.*, 2011; Moniz *et al.*, 2014). Availability of sequences, however, is limited making phylogenetic analysis less conclusive compared to other markers. Moniz *et al.* (2014) used the *tufA* gene in their analysis of the

order Prasiolales (Chlorophyta) finding that there was good agreement between the phylogenies of *tufA*, *rbcl* and *psaB*. Presently, *tufA* as a marker for *Dunaliella* taxonomy has not been thoroughly examined and its potential not fully realised. *rbcl* analysis has typically not highlighted intraspecific variation to the same degree as other markers such as the ITS regions. Preetha *et al.* (2012) reported that *rbcl* gene phylogeny of *Dunaliella* did not show the same level of heterogeneity as the ITS, yet, the novel isolates analysed in their study showed similar groupings in both phylogenetic trees.

In addition to these useful barcoding markers for clonal isolates which can also be used for environmental analysis, the V9 variable region of the SSU rRNA, has frequently been employed for next generation sequencing of environmental samples (Amaral-Zettler *et al.*, 2009; de Vargas *et al.*, 2015) with an extensive database of sequences now available. The application of V9 to *Dunaliella* sp. taxonomy and its ability to resolve different species is therefore of importance to validate with regards to metagenomic diversity. To ensure this region can resolve the diversity of this group means that metagenomic analysis of hypersaline environments using this marker will accurately resolve the *Dunaliella* community diversity.

Suitable molecular markers are needed for accurate identification of species as this will aid in accurately identifying those isolates that will be economically valuable, e.g. strains of *D. salina* that produce high levels of 9-cis- β -carotene that is economically more valuable than its isomer all-trans- β -carotene, and to further understand the molecular evolution of this important group. This study set out to genetically investigate a range of new *Dunaliella* isolates collected from a range of geographical provinces including Israel, Spain, South Africa and Namibia. These were compared to reference strains previously collected from Chile, Australia, Mexico, Norway and Israel. We sought to employ a suite of molecular tools to provide a comprehensive analysis of different markers and their suitability for application to the genus *Dunaliella*.

Materials and methods

Dunaliella isolation and culture

Water samples (50 mL) were collected from hypersaline locations detailed in Table 1 and were transported back to the laboratory. *Dunaliella* sp. were identified via light microscopy and isolated using single cell-picking with a micropipette and dilution techniques according to Anderson & Kawachi (2005). Established cultures were maintained in 30 mL F/2 media (Guillard & Ryther, 1962) with the addition of 50 g L⁻¹ sea salts (Sigma) (1.45 M NaCl), at 25°C continuous light of 100 $\mu\text{mol m}^{-2} \text{s}^{-1}$. Cultures were regularly sub-cultured into fresh media every 2–3 weeks and cell imaging was undertaken 2 weeks post sub-culture using a DMi8 live cell imaging system (Leica). All isolates have been deposited in the Marine Biological Association culture collection.

DNA extraction, PCR and sequencing

DNA was extracted from 10 mL late exponential cultures using the DNeasy blood and tissue kit (Qiagen) according to the manufacturer's instructions with the exception of the elution volume which was 50 μL . PCR was carried out using a suite of primers (Table 2) in a Corbett Thermocycler (Corbett Research). PCR reactions were typically carried out in 50 μL volumes containing 2 μL DNA, 25 pmol each primer, 1 \times reaction buffer, 2.5 mM MgCl₂, 0.0025 mM dNTPs, 1 Unit Gotaq polymerase (Promega) unless otherwise stated (Table 2). PCR reactions proceeded with an initial denaturation at 95°C for 5 min, followed by 35 cycles

Table 1. *Dunaliella* sp. isolates used during this study

MBA culture collection reference	Habitat	Geographic origin	Date collected (month/year)	Cell length (µm) (mean and range)	Cell width (µm) (mean and range)	Original microscopic identification	Cell colour at 25°C, constant light, 1.5 M NaCl
DF15	Saltpan	Eilat, Israel	03/2014	18.2 (14.4–21.5)	13.8 (10.4–18.7)	<i>Dunaliella salina</i>	Red
DF17	Raceway	Eilat, Israel	03/2014	12.7 (10.9–15.5)	10.3 (8.7–12.9)	<i>Dunaliella salina</i>	Yellow
DF40	Raceway	Monzon, Spain	05/2015	14.4 (13.7–15.1)	13.3 (12.0–14.6)	<i>Dunaliella salina</i>	Red
DF41 ^a	Raceway	Monzon, Spain	11/2015	N/A	N/A	<i>Dunaliella salina</i>	Red
DF45	Saltpan	Monzon, Spain	11/2015	13.6 (11.5–17.2)	10.8 (7.9–13.2)	<i>Dunaliella salina</i>	Red
SA3	Saltpan	Velddrif, South Africa	02/2012	13.9 (12.9–15.1)	11.7 (10.4–12.9)	<i>Dunaliella salina</i>	Orange
SA4	Saltpan	Velddrif, South Africa	02/2012	15.1 (12.9–17.2)	12.2 (10.4–14.2)	<i>Dunaliella salina</i>	Orange
T36	Saltpan	Swakopmund, Namibia	06/2010	18.0 (15.9–20.7)	12.8 (9.8–16.1)	<i>Dunaliella salina</i>	Orange
T37	Saltpan	Swakopmund, Namibia	06/2010	16.1 (11.9–19.3)	12.7 (8.8–16.0)	<i>Dunaliella salina</i>	Orange
T41	Saltpan	Swakopmund, Namibia	06/2010	15.3 (13.4–17.9)	12.2 (10.0–13.5)	<i>Dunaliella salina</i>	Orange
T68	Saltpan	Port Elizabeth, South Africa	04/2013	15.7 (13.3–18.1)	15.2 (12.9–17.9)	<i>Dunaliella salina</i>	Orange
T74 ^a	Saltpan	Velddrif, South Africa	04/2013	N/A	N/A	<i>Dunaliella salina</i>	N/A
UTEX ¹ 999	Fjord	Oslo, Norway	1938	9.4 (8.2–11.2)	7.6 (6.2–8.7)	<i>Dunaliella tertiolecta</i>	Green
CCAP ² 19/30	Bardawil lagoon	North Sinai, Israel	1978	11.0 (9.9–13.8)	7.9 (6.1–9.2)	<i>Dunaliella bardawil</i> now <i>tertiolecta</i>	Green
UTEX 2538				14.33 (10.4–18.4)	10.51 (8.3–13.2)	<i>Dunaliella bardawil</i>	Red
ATCC ³ 30861				21.27 (17.4–23.7)	18.78 (15.2–22.6)	<i>Dunaliella bardawil</i>	Red
MUR ⁴ 8	Hutt lagoon	Australia	Unknown	7.9 (6.9–9.0)	6.4 (5.5–7.3)	<i>Dunaliella salina</i>	Green
MUR 22	Hutt lagoon	Australia	Unknown	14.0 (12.5–15.6)	11.2 (10–12.4)	<i>Dunaliella salina</i>	Orange
CONC ⁵ 001	Coastal saline pond	Laguna la Rinconada, Chile	1990	N/A	N/A	<i>Dunaliella salina</i>	N/A
CONC 003, 004, 005, 006, 007, 008, 009	Andean saline depression	Salar de Atacama, Chile	1990	N/A	N/A	<i>Dunaliella salina</i>	
CCAP 19/18	Hypersaline Hutt lagoon	Australia	1982	14.1 (10.2–15.4)	11.1 (9.8–15)	<i>Dunaliella salina</i>	Red
CCAP 19/25	Unknown	Unknown	Unknown	14.0 (13.4–14.4)	11.8 (11.1–12.3)	<i>Dunaliella salina</i>	Orange
UTEX 1644	Point Colorado Salinas	Baja California, Mexico	1967	15.5 (13.6–16.6)	12.1 (11.1–14.0)	<i>Dunaliella salina</i>	Orange

¹UTEX, Culture collection of Algae at the University of Texas, Austin, USA; ²CCAP, Culture collection of Algae and Protozoa, UK; ³ATCC, American type culture collection, VA, USA; ⁴MUR, Murdoch University Algal collection, Australia; ⁵CONC, Culture collection of Microalgae, Universidad de Concepcion, Concepcion, Chile.

^aIsolates lost from culture.

Table 2. Primers used in this study

Primer name	Target	Sequence (5'-3')	Size (bp)	Anneal temp (°C)	PCR reaction	Reference
AB1F	ITS (Universal)	AATCTATCAATAACCACACCG	700	52	20 pmol primers; 1.5 mM MgCl ₂ ; 1 min extension	Hejazi et al. (2010)
AB2R		TTTCATTGCGCATTACTAAGG				
MA1F	18S Dunaliellaceae	CGGGATCCGTAGTCATATGCTTGCTC	1700-2500	52	Extension time 3 minutes; 30 pmol primers; 1.5 mM MgCl ₂	Olmos et al. (2009)
MA2R		CGGAATTCCTTCTGCAGGTTCCACC				
rbclF	rbcl Chlorophyta	CGTGACAAATTAACAAATATGG	700	54	As text	Nozaki et al. (1995)
rbclR		AAGATTTCAACTAAAGCTGGCA				
tufA_F	tufA Chlamydomonales	GAAGARAAAGCWGCGGTATTAC	750	54	As text	This study
tufA_R		CCATACCRGTTTCRATDTCTT				
1391F	Universal SSU rDNA (V9)	GTACACACCGCCCGTC	168	54	25 µl reaction; 10 pmol primer; 1 mM MgCl ₂ ; 0.5 U taq; 20 s annealing and extension	Lane (1991); Medlin et al. (1988)
EukB		TGATCCTTCTGCAGGTTACCTAC				
D1R_F	Universal LSU rDNA	ACCCGCTGAATTTAAGCATA	760	60	20 pmol primers; 1.5 mM MgCl ₂ ; 1 min extension	Scholin et al. (1994)
D2C_R		GCTTGGTCCGTGTTCAAGA				

of denaturation at 95°C for 30 s, annealing at 54°C for 45 s and extension at 72°C for 1 min unless otherwise stated (Table 2). PCR reactions had a final extension step of 72°C for 5 min. PCR products were either sequenced directly using the respective primers (Source Bioscience, Cambridge) or in some cases cloning was necessary to ensure a single sequence was obtained. In these instances, PCR products were electrophoresed on a 1.2% (w/v) agarose gel in 1 × TAE and purified using the Zymoclean gel purification kit (Cambridge Biosciences). Purified PCR product (1 µL) was ligated into the pCR2.1 TA cloning vector (Invitrogen) and transformed according to manufacturer's instructions. PCR amplicons from colony PCR with M13 primers were sequenced (Source Bioscience, Cambridge).

Sequences were manually verified for quality using Chromas (Technelysium Pty Ltd). Multiple sequence alignments were constructed in BioEdit 7.0 (Hall, 1999) using ClustalW. Phylogenetic analysis based on neighbour-joining and maximum likelihood was undertaken using MEGA 6 (Tamura et al., 2013). Bootstrap values were retrieved from 1000 replicates. Accession numbers for sequences generated in this study are detailed in Supplementary Table 1.

Results

Microscopy

Microscopy clearly identified cells that had accumulated β-carotene owing to the orange-red colouration and hence those affiliated to the section Dunaliella, species *D. salina* (Figure 1). These cultures (DF40, DF41, DF45, DF17, DF15, T36, T27, T41, T68, SA4 and SA3) ranged in mean cell length of 12.6–18.2 µm and cell width of 10.2–15.1 µm (Table 1). Cell shape was variable within cultures and stigma was not easily identifiable due to the presence of refractile granules.

18S intron-sizing method and sequence analysis

As anticipated, according to Olmos et al. (2009), *D. tertiolecta* had no introns (Table 3). We also identified two different groups of *D. salina*, as reported in Olmos et al. (2009), those with two introns and those with one. Further to this, however, some isolates

that were assigned as *D. salina* microscopically were found to have no introns, i.e. they had the same MA1/2 18S amplicon size as *D. tertiolecta*. In this study, we PCR-amplified from two of the same isolates as Olmos and co-workers, with differing results. They reported *D. bardawil* UTEX 2538 to have two introns whereas we sized it to have one. Moreover, we sized *D. bardawil* ATCC (American Type Culture Collection) 30861, which is thought to be the same strain as UTEX 2538, and found it to have no introns. Strain ATCC 30861 was isolated by Ben-Amotz and Avron in 1976 from a salt pond near Bardawil, Israel, and this strain was then deposited in the UTEX collection as strain 2538 by R. Adams between 1980 and 1982. The culture collection legacy of this strain continues as two other culture collections host this strain as the same as the original *D. bardawil* isolated by Ben-Amotz and Avron. SAG (Culture Collection of Algae at Göttingen University) received the strain from Avron via Prof Thompson in 1988, re-naming it *D. salina* SAG 42.88 in 2001, and CCAP (Culture Collection of Algae and Protozoa) received the strain from SAG in 1996 (Muller, 2005) identifying it as strain 19/30. Olmos et al. (2009) reported the CCAP 19/30 sequence in GenBank, that was deposited by 'Herve' in 2006, to have one intron which is in agreement with our result for ATCC 30861, however, both our study and Olmos et al. (2009) reported CCAP 19/30 to have no introns. In this study we also sequenced the 18S amplicons for the different strains and for those strains that had introns all of them shared the same sequence with the exception of DF15 (Table 3).

DF15 was the only strain to produce two different-sized amplicons of the 18S rDNA with the intron-sizing method, leading us to suspect contamination of the culture. To confirm this was not a result of contamination, further rounds of single-cell picking from the culture were undertaken to ensure clonality and six more cells were picked from this culture, washed and grown in higher salt media (final concentration 185 g L⁻¹ sea salts) to ensure selection for the halophilic *D. salina*. The 18S PCR was repeated with the six newly isolated clones with the PCR consistently generating two amplicons. Both PCR products were sequenced, with the smaller product found to contain one intron and the larger product with two. When the sequences were compared, nucleotide substitutions were detected across the whole sequence (both within the intron and exon regions). For the intron that the two

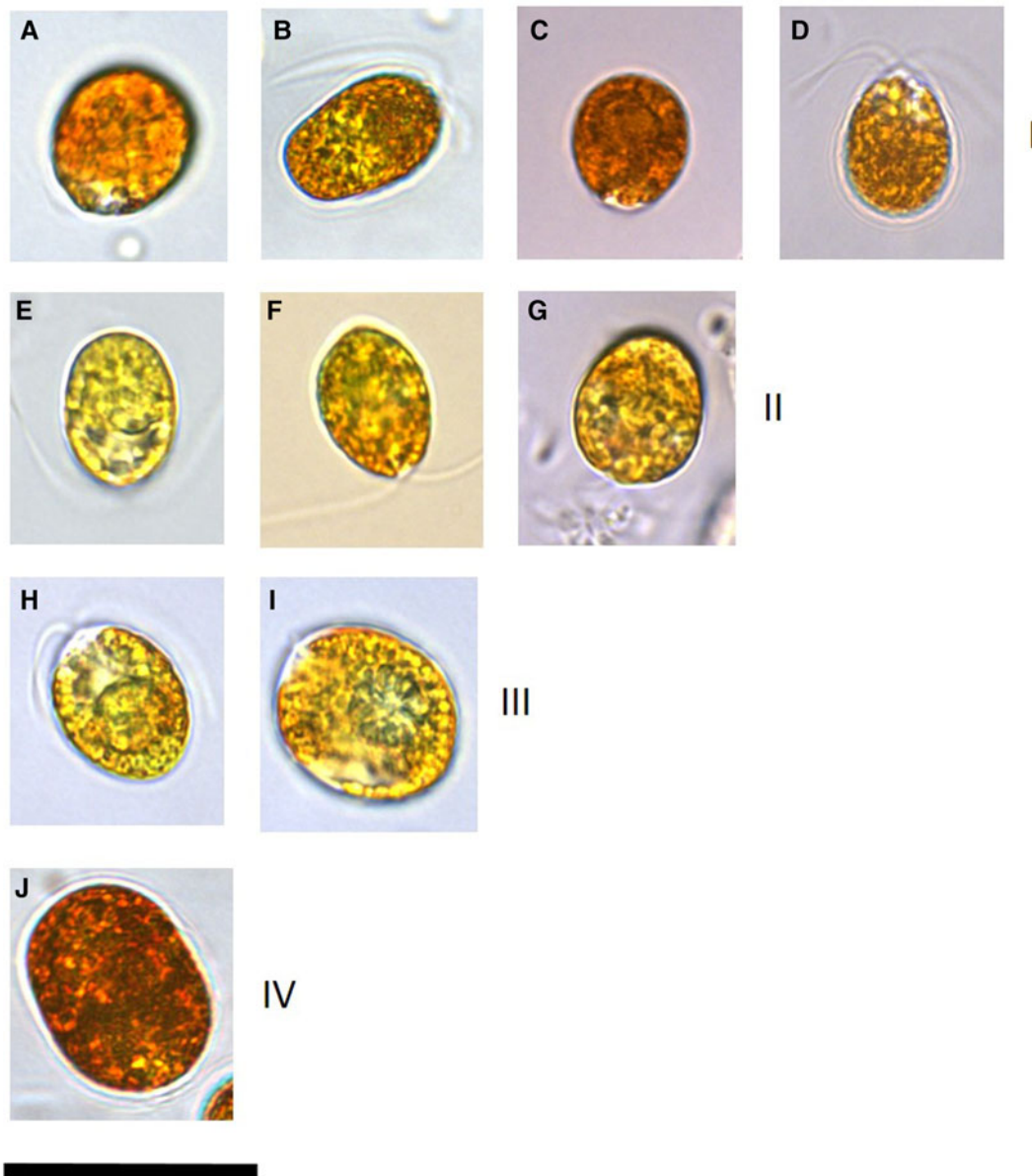


Fig. 1. Images of a representative set of *Dunaliella salina* strains isolated in this study compared with strains imaged from culture collections. All isolates were cultured in identical conditions and imaging for each isolate was undertaken 2 weeks following sub-culturing. Numerals in brackets after the strain name indicates the *D. salina* sub-group. (a) *D. salina* DF40 (I), (b) *D. salina* DF45 (I), (c) *D. salina* CCAP 19/18 (I), (d) *D. salina* MUR22 (I), (e) *D. salina* DF17 (II), (f) *D. salina* CCAP 19/25 (II), (g) *D. salina* UTEX 1644 (II), (h) *D. salina* T41 (III), (i) *D. salina* T37 (III), (j) *D. salina* DF15 (IV). Scale bar is equivalent to 25 μm .

DF15 amplicons shared, there was 98.5% similarity and the large amplicon intron and small amplicon intron shared 89.6% and 88.8% identity with *D. bardawil* UTEX 2538, respectively. BLASTn analysis showed these introns to be most similar to *Dunaliella* sp. ST13 (>98%). The second intron in the larger product was unique, sharing 99.23% identity also with *Dunaliella* sp. strain ST13.

Phylogenetic analysis

Strains CCAP 19/30 and MUR 8 were omitted from the phylogenetic analysis as morphological analysis showed that they did not turn red under stress. Furthermore, BLAST analysis of the sequences generated from these two strains and also CONC 001 showed them to be more similar to *D. tertiolecta* (data not shown) and hence confirmed their exclusion from the *D. salina* phylogeny. GenBank holds a vast number of sequences originating from *Dunaliella* species which are available to include in

phylogenetic analysis. Because of some of the problems reported with strain identification and/or cross contamination we chose to only include key strains that we obtained from culture collections or DNA where the culture was not available.

The large-subunit (LSU) rDNA phylogeny formed a strongly supported clade of five out of seven of the *D. salina* strains isolated from Salar de Atacama, Chile, in 1990, however, other subclades were weakly supported, owing to only a small number of nucleotide substitutions (Figure 2). The clade containing *D. bardawil* UTEX 2538 clustered separately from *D. salina* UTEX 1644 owing to 6 bp substitutions across 477 bp of the alignment.

The *rbcL* phylogeny (Figure 3) divided *D. salina* broadly into two separate clades, corresponding to the clustering patterns described by Assunção *et al.* (2012) (salina I and salina II). The *rbcL* phylogeny further sub-divides the Chilean clade identified in the LSU phylogeny, but with the addition of CONC 009 which clustered separately in the LSU phylogeny.

Table 3. Results from intron sizing and sequence alignment of introns

Isolate name	# Introns	Intron 1 group	Intron group 2
DF45	2	A	P
DF41	2	A	P
DF40	2	A	P
<i>D. bardawil</i> ATCC 30861	0	–	–
<i>D. bardawil</i> UTEX 2538	1	A	–
DF17	0	–	–
T74	0	–	–
SA3	0	–	–
SA4	0	–	–
T36	0	–	–
T37	0	–	–
T41	0	–	–
T68	0	–	–
DF15	1 and 2	B	Q
<i>D. tertiolecta</i> UTEX 999	0	–	–

The *tufA* phylogeny (Figure 4) grouped all the new isolates and previously characterized *D. salina* strains in one clade with all the sequences >99% similar to each other.

The phylogenetic tree based on ITS1 + ITS2 (Figure 5) provided much more resolution compared with the other trees and was robust, supported by high bootstrap values. In order to complement the phylogeny of González *et al.* (2009) who identified three main *D. salina* clades, we included the sequence for *D. salina* AC144 in this analysis. This strain was the sole member of one of the clades identified by González *et al.* (2009) and therefore was of interest to examine its relationship with the strains from this study. Two salina groups were identified in this phylogeny, according to Assunção *et al.* (2012), and these were clearly separated by long branch lengths with salina I which encompasses *D. bardawil* UTEX 2538 and salina II which encompasses *D. salina* UTEX 1644. The Chilean strains were separated into two groups, matching the LSU phylogeny. Due to ambiguous bases in the DF15 sequences, this amplicon was cloned and sequenced, hence the inclusion in the tree of four DF15 sequences. DF15 clones were found to have nucleotide substitutions across the ITS region when sequenced with the three sequences identified found to share >99% identity. In the LSU phylogeny (Figure 2) DF15 clustered with the *D. salina* UTEX 1644 (salina II) group but with long branch lengths separating them. However in the *rbL* (Figure 3) phylogeny, this strain groups with *D. bardawil* UTEX 2538 (salina I). The ITS phylogenetic tree places DF15 intermediary to the clades classified as salina I or II by Assunção *et al.* (2012). BLASTn analysis of the DF15 ITS sequence identified *Dunaliella* sp. ST13 as most similar yet with only 98.67% identity. The sequence for *D. salina* AC144 weakly clustered with the top half of the tree with low bootstrap values.

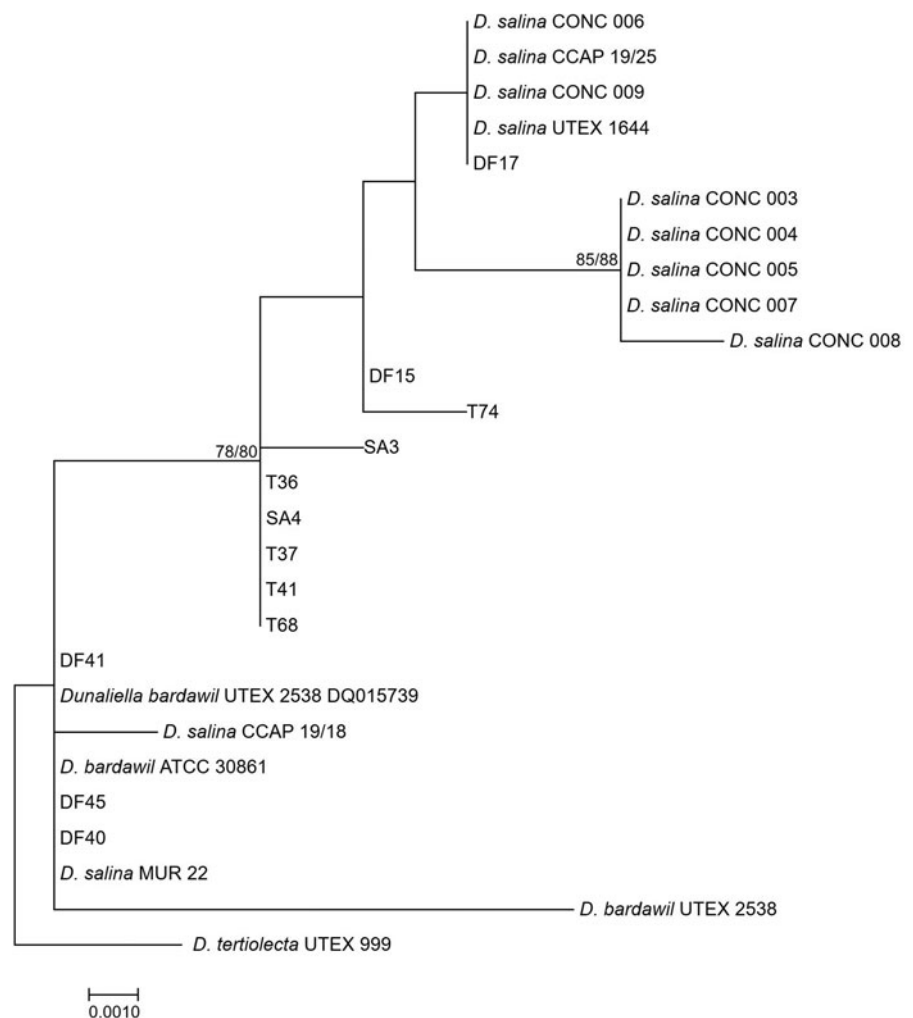


Fig. 2. Neighbour-joining tree of *D. salina* strains isolated during this study and sequences from GenBank based on a 477 bp alignment of the LSU gene. Bootstrap values were retrieved from 1000 replicates and those >70% are indicated at the nodes for neighbour-joining and maximum likelihood respectively. The out-group was *D. tertiolecta* UTEX 999.

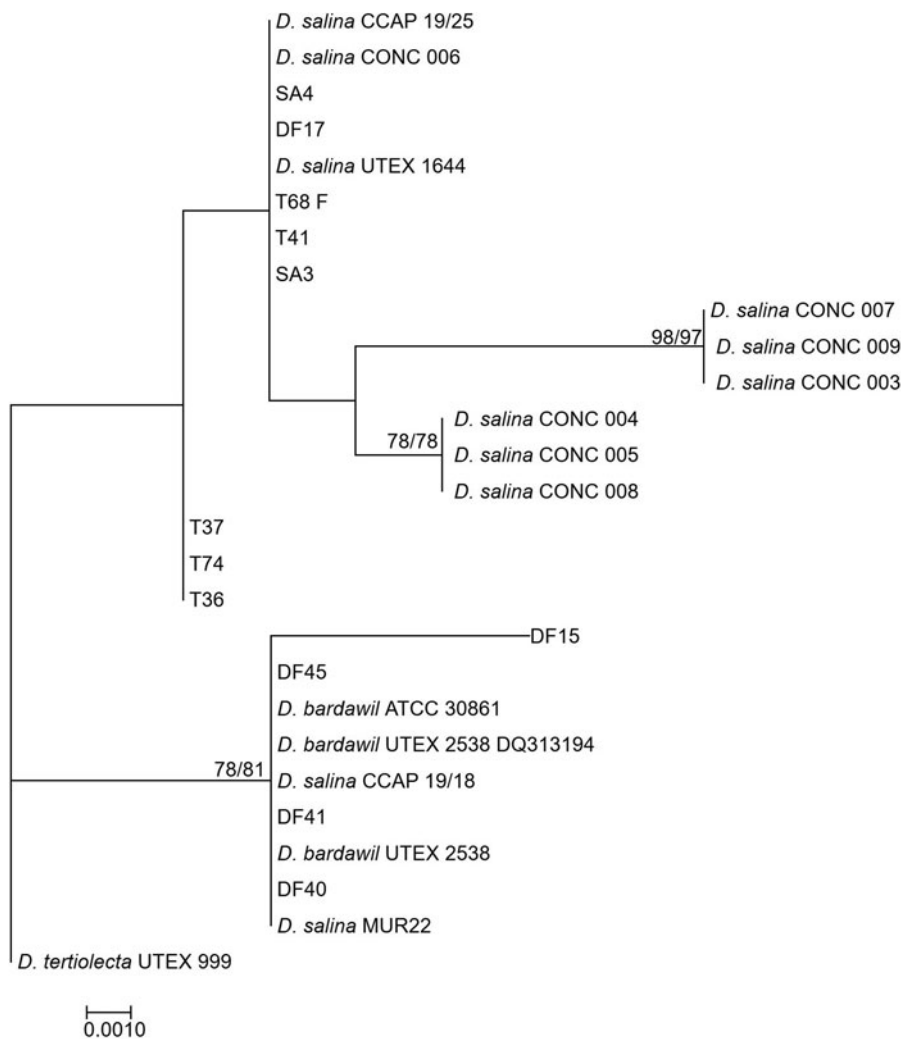


Fig. 3. Neighbour-joining tree of *D. salina* strains isolated during this study and sequences from GenBank based on a 521 bp alignment of the *rbcl* gene. Bootstrap values were retrieved from 1000 replicates and those >70% are indicated at the nodes for neighbour-joining and maximum likelihood respectively. The out-group was *D. tertiolecta* UTEX 999.

The concatenated tree of the 4 markers, ITS-LSU-*rbcl*-*tufA* (Figure 6) was constructed to further resolve/affirm any clades/sub-clades to provide reliable information on the taxonomy of these strains in combination with microscopy. Four sub-clades of *Dunaliella salina* could be identified, and these were supported by significant bootstrap values. Within each of the subclades the strains shared 99% identity, with all the strains morphologically identified as *D. salina* sharing at least 97% identity.

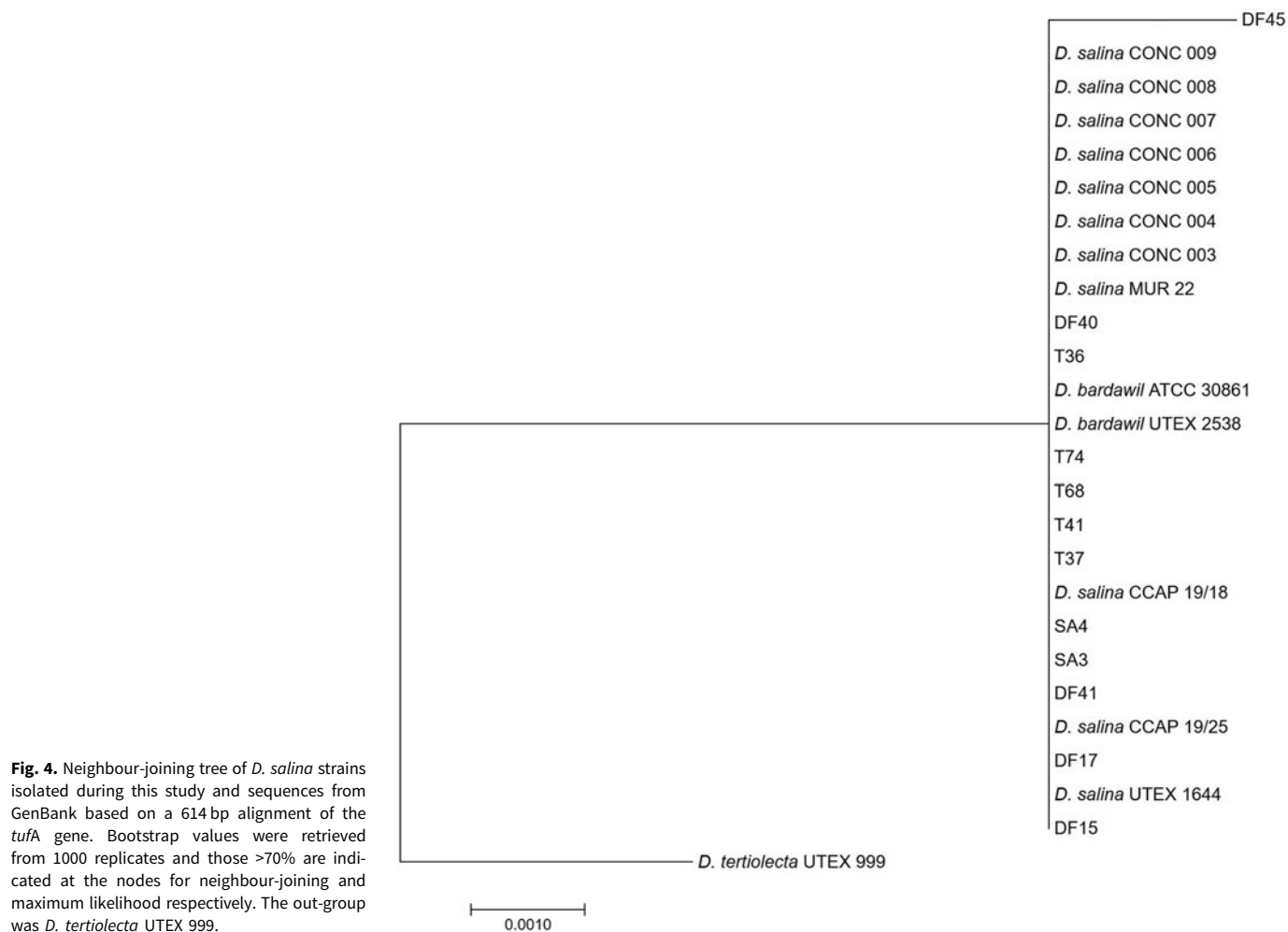
V9 (SSU rDNA) amplicon sequencing was undertaken for DF15, DF17, *D. bardawil* UTEX 2538, *D. salina* CONC 008, *D. salina* CCAP 19/25, *D. salina* UTEX 1644, *D. salina* CCAP 19/18 and *D. tertiolecta* UTEX 999 only (Figure 7). Nucleic acid alignment showed that *Dunaliella* of the tentative clades, salina I, and *tertiolecta* were identical, however salina II, was different. DF15 was identical to salina I and *D. tertiolecta*.

Discussion

The intron sizing method previously revealed useful information regarding the history of *Dunaliella* spp. in culture collections. Whilst providing some data indicating the taxonomic affiliation of particular strains we found the method was not sufficiently robust. The fact that a group of *D. salina* have no introns (the same as *D. tertiolecta*) negates the intron-sizing as a tool for separating these strains from each other as both an isolate of *D. tertiolecta* and *D. salina* would produce the same size amplicon, despite these two being very different species. Selection based on biochemistry could however easily separate these two

species prior to intron-sizing if this method was preferred. Olmos *et al.* (2009) concluded that cross-contamination of cultures had occurred which resulted in differences in amplicon sizes in what was thought to be the same strain. Our study showed similar discrepancies with identical strains *D. bardawil*, strain UTEX 2538 and strain ATCC 30861 from separate culture collections having a different number of introns. This could indicate cross-contamination in its culturing history, primary non-clonal cultures or could indicate intron loss in one of the strains in the different culture collections. Indeed in our phylogenetic analyses the two aforementioned strains consistently group together with identical *tufA* and *rbcl* sequences, ITS sequences differing by 2 bp over a 553 bp multiple sequence alignment and LSU sequences differing by 5 bp substitutions over 477 bp. Considering the original isolate was collected in 1976, genetic divergence in separate culture collections is conceivable although without more information this cannot be determined. Certainly, with advances in cryopreservation one would be able to track such events more closely by resurrecting and comparing with regularly sub-cultured algae.

Our study confirms that, based on the sequencing analysis of four marker genes, the strains CCAP 19/30, MUR 8 and CONC 001 that we acquired in this study are not *D. salina*. This is not to say that other cultures of these strains around the world are not true representatives of the original designation of these strains, however, but because of our observations they were not included in the analyses here. These results are a cautionary tale for anyone working on algal cultures, with genotyping of the



strains recommended as an integral step to ascertain the taxonomic affiliation of the strains one is studying.

The sequences for DF15 nuclear SSU rDNA were shown to be unique, with two different versions amplified. Whilst there is a high copy number of the rDNA, concerted evolution typically moves towards resulting identical sequences of this gene within the genome so it is surprising to get two different versions of this gene in DF15. Since its clonality was verified through multiple rounds of single cell picking, intragenomic sequence variation is a possible explanation. Certainly, Alverson & Kolnick (2005) reported intragenomic nucleotide polymorphisms within the SSU rDNA of the diatom *Skeletonema*, however, the differences identified were random single nucleotide polymorphisms rather than whole introns. We propose that DF15 represents a novel lineage and as such concerted evolution has not progressed to completion as seen in the other *Dunaliella* species. Alternatively, it is possible that the rate of variation is exceeding concerted evolution with the hypersaline harsh environment selecting for heterogeneity. However, if this was indeed the case one would anticipate identifying this heterogeneity in more strains.

Comparing the four markers analysed in this study shows that *tufA* is the least useful in resolving intraspecific diversity within *D. salina*. However, the *tufA* analysis has been of use in that it supports the designation of all of these strains to the species *D. salina*. González *et al.* (2009) discussed the high intraspecific diversity within *D. salina* and the potential existence of more than one biological species, yet these data support the existence of only one. The LSU and *rbcL* phylogenies show more resolution than *tufA*,

providing some information on the relationships between the different strains, but are less robust than the ITS. The phylogenetic tree based on the ITS regions gives the most information, with subdivisions strongly supported by high bootstrap values. The concatenated tree of the four genes further reinforces the ITS region phylogeny with a clearer delineation of different phylogroups. Including intron presence/absence data and sequences can provide further supporting information on some subdivisions, such as the separate DF15 clade.

As a marker on its own, the V9 region of SSU rDNA does not offer enough variability for accurate taxonomy for the *D. salina* species. The V9 region lends itself to next generation sequencing methodologies, due to its heterogeneity and short length, however, the fact that not all the groups can be resolved with this marker raises questions on its suitability for analysis of hypersaline microbial communities, as a significant portion of *D. salina* diversity will be missed. The V2–V4 region of the SSU rDNA was found to have the best phylogenetic resolution compared with the other hypervariable regions in dinoflagellates (Ki, 2012), however, this was not tested here.

There is definitive *D. salina* taxa defined by its morphology and physiology with sequence information from our study demonstrating a robust segregation into four clades. We support the two sub-clades designated by Assunção *et al.* (2012), salina I and II, and identify two further groups. Salina II, as previously identified (Assunção *et al.*, 2012), comprises the original isolate of what we know as *D. salina*, isolated in 1967 by Loeblich from Baja California and is deposited within the UTEX culture collection as #1644. The salina I clade contains originally classified *D. bardawil*

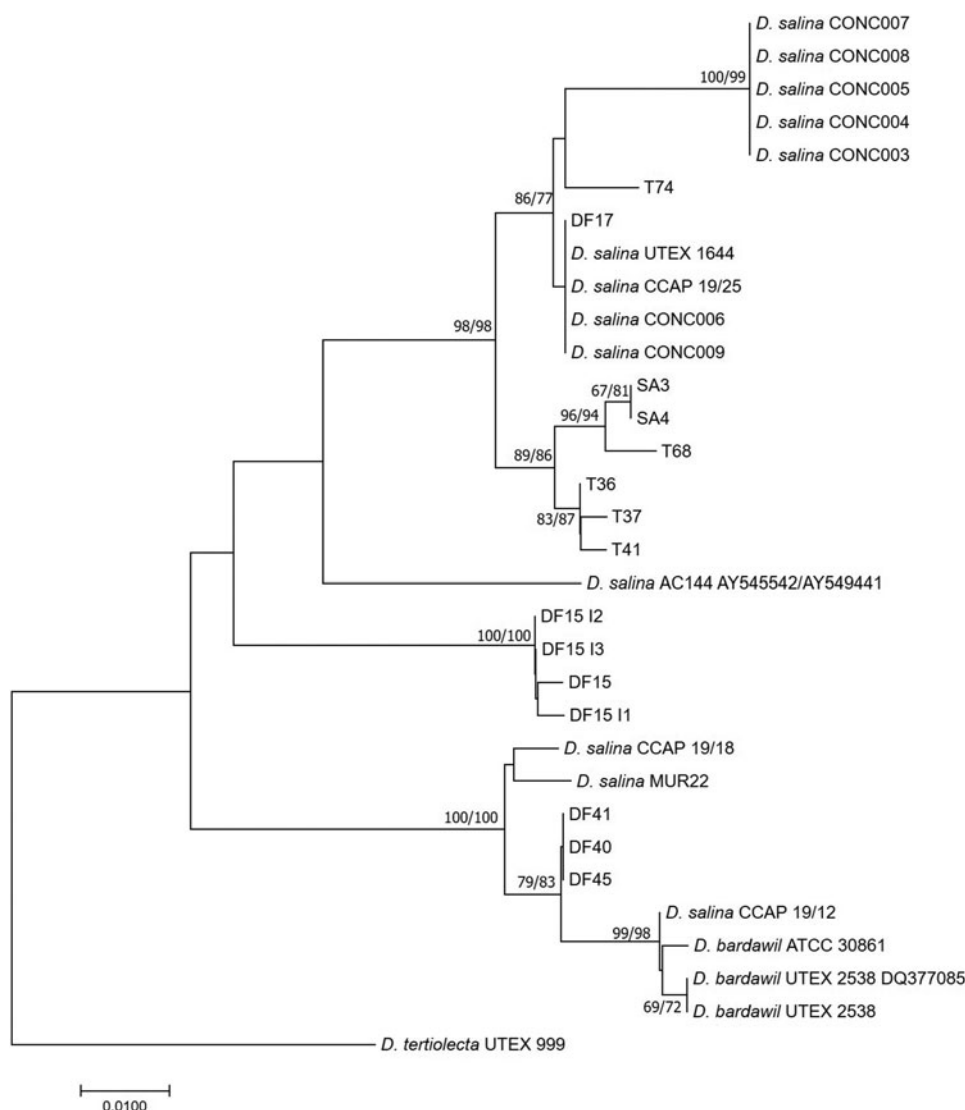


Fig. 5. Neighbour-joining tree of *D. salina* strains isolated during this study and sequences from GenBank based on a 378 bp alignment of the ITS1+ITS2. Bootstrap values were retrieved from 1000 replicates and those >70% are indicated at the nodes for neighbour-joining and maximum likelihood respectively. The out-group was *D. tertiolecta* UTEX 999.

strains including the first isolate within this clade, *D. bardawil* UTEX 2538 isolated in 1976 and also *D. salina* CCAP 19/18, which has recently been proposed as a reference strain for the species by Polle *et al.* (2020). We propose two other sub-clades within *D. salina*, the salina III group which encompasses strains T36, T37, T41, T68, SA3 and SA4 isolated in this study. These form a robust group and therefore are considered distinct from the salina II group. Finally, we propose a new salina IV sub-clade that contains DF15 as the sole member. The ITS phylogeny potentially also suggests the *D. salina* AC144 (as analysed by González *et al.*, 2009) is a unique strain, however due to unavailability of this strain, comprehensive genotyping could not be undertaken to corroborate this.

Strain DF15 is a distinctive strain of *D. salina* as, significantly, it does not delineate with either group. This strain is somewhat of an enigma with the different markers used clustering it (weakly) with different groups, e.g. DF15 clusters with strain DF17 for LSU but with strain UTEX 2538 in the *rbcl* phylogenies. Interestingly, biochemical analyses of this strain found it to be the highest producer of all-trans β -carotene, 9-cis β -carotene and zeaxanthin compared with four other *D. salina* strains, which included DF17, DF40, CCAP 19/30 and UTEX 2538, when tested at $1500 \mu\text{mol m}^{-2} \text{s}^{-1}$ light intensity (Xu *et al.*, 2018). We therefore propose that the salina IV lineage we have identified may comprise of highly sought after strains for biochemical exploitation.

However, principal component analysis performed by Xu *et al.* (2018) examined 11 traits for DF15, DF17, DF40 and UTEX 2538 (all-trans β -carotene, 9-cis β -carotene, glycerol, lutein, zeaxanthin, all-trans α -carotene, photosynthesis, respiration, total carotenoids, total chlorophyll and specific growth rate at four different light intensities) and showed that DF17 and DF40 clustered closely whereas our phylogenetic analysis separates them into different clades. This highlights the ambiguities between genetic data and biochemical data, however, we believe that these data are supportive of DF15 belonging to a unique sub-clade of *D. salina*. Upon identifying other strains that can be assigned to this clade we can confirm that it is a group characterized by the production of exceptional quantities of carotenoids. Genetic information from this strain and the identification of its sub-clade could be used to screen environments for this strain which have the potential to produce similarly high quantities. Due to ongoing revisions and changes in *D. salina* taxonomy we have refrained from the designation of new sub-species.

In conclusion this study has revealed the further diversity of *D. salina* isolates collected from South Africa, Israel, Namibia, Spain and in particular the novel strain DF15. In combination with morphological analysis the suite of genes used for molecular analysis has permitted the separation of *D. salina* into four sub-clades. Certainly, it appears to be beneficial to use several gene markers for phylogeny in order to generate a robust tree, however at the very least we are in agreement with other studies that the

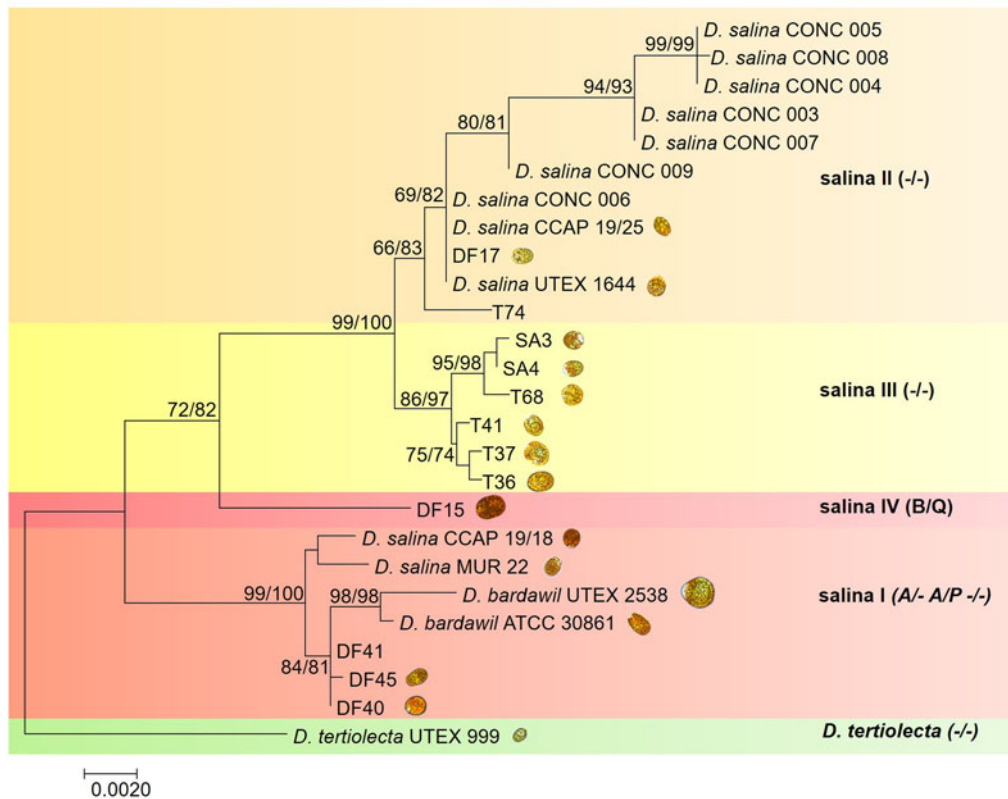


Fig. 6. Neighbour-joining tree of *D. salina* strains isolated during this study and sequences from GenBank based on an alignment of a concatenation of the ITS-LSU-*rbcL-tufA* sequences used to produce Figures 2–5. Bootstrap values were retrieved from 1000 replicates and those >70% are indicated at the nodes for neighbour-joining and maximum likelihood respectively. Images show the morphology of representative strains. The out-group was *D. tertiolecta* UTEX 999.

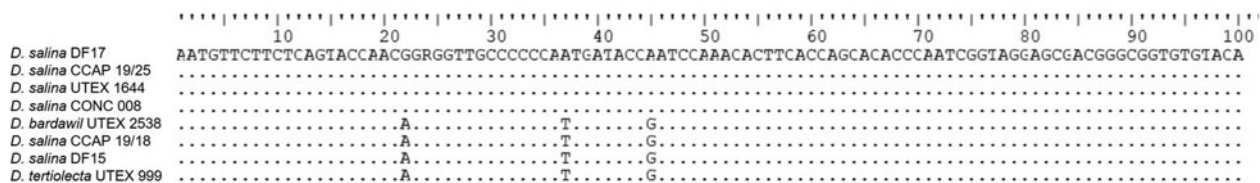


Fig. 7. CLUSTALW alignment of the V9 SSU sequences generated in this study and selected sequences from GenBank. Dots indicate identical nucleotides and letters indicate nucleotide substitutions.

ITS regions are the most appropriate for resolving different clades. However, we propose that ITS2 should be used with ITS1 and 5.8S to provide even more genetic information. The classification of *Dunaliella* has proven to be a challenge over many decades and we recommend that the *Dunaliella* community needs to come together to tackle the challenge in unison with the vision to facilitating the selection of important strains for key uses.

Supplementary material. The supplementary material for this article can be found at <https://doi.org/10.1017/S0025315420001319>

Acknowledgements. We thank Patricia Gomez for supplying DNA for Chilean *Dunaliella* sp. and Prof. W. Wilson for helpful comments that improved the manuscript. We would also like to thank Dr Maya Pfaff, Department of Environmental Affairs, Forestry and Fisheries South Africa for assisting Prof. Declan Schroeder in the sampling of the South African salt pans and Sophia Rhodes for providing her facilities for purposes of sample processing prior to transport.

Financial support. This research was supported by the D-factory and the EU KBBE.2013.3.2-02 programme (D-Factory: 368 613870) and the ValgOrize consortium, subsidised by the Interreg 2 Seas programme 2014–2020, co-financed by the European Fund for Regional Development in the framework of subsidy contract nr. 2S05-17.

References

- Alverson AJ and Kolnick L (2005) Intragenomic nucleotide polymorphism among small subunit (18S) rDNA paralogs in the diatom genus *Skeletonema* (Bacillariophyta). *Journal of Phycology* **41**, 1248–1257.
- Amaral-Zettler LA, McCliment EA, Ducklow HW and Huse SM (2009) A method for studying protistan diversity using massively parallel sequencing of V9 hypervariable regions of small-subunit ribosomal RNA genes. *PLoS ONE* **4**, e6372.
- Anderson RA and Kawachi M (2005) Traditional microalgae isolation techniques. In Anderson RA (ed.), *Algal Culturing Techniques*. London: Academic Press.
- Assunção P, Jaén-Molina R, Caujapé-Castells J, de la Jara A, Carmona L, Freijanes K and Mendoza H (2012) Molecular taxonomy of *Dunaliella* (Chlorophyceae), with a special focus on *D. salina*: ITS2 sequences revisited with an extensive geographical sampling. *Aquatic Biosystems* **8**, 2.
- Assunção P, Jaén-Molina R, Caujapé-Castells J, Wolf M, Buheim MA, de la Jara A, Freijanes K, Carmona L and Mendoza H (2013) Phylogenetic analysis of ITS2 sequences suggests the taxonomic re-structuring of *Dunaliella viridis* (Chlorophyceae, Dunaliellales). *Phycological Research* **61**, 81–88.
- Avron M and Ben-Amotz A (eds) (1992) *Dunaliella: Physiology, Biochemistry, and Biotechnology*. Boca Raton, FL: CRC Press.
- Ben-Amotz A and Avron M (1983) On those factors which determine the massive β -carotene accumulation in the halotolerant alga *Dunaliella bardawil*. *Plant Physiology* **72**, 593–597.

- Ben-Amotz A, Katz A and Avron M** (1982) Accumulation of β carotene in halo-tolerant algae: purification and characterisation of β -carotene-rich globules from *Dunaliella bardawil* (Chlorophyceae). *Journal of Phycology* **18**, 529–537.
- Borowitzka LJ and Brown AD** (1974) The salt relations of marine and halophilic species of the unicellular green algae, *Dunaliella*. *Archives of Microbiology* **96**, 37–52.
- Borowitzka MA and Siva CJ** (2007) The taxonomy of the genus *Dunaliella* (Chlorophyta, Dunaliellales) with emphasis on the marine and halophilic species. *Journal of Applied Phycology* **19**, 567–590.
- Bucheim MA, Kirkwood AE, Bucheim JA, Verghese B and Henley WJ** (2010) Hypersaline soil supports a diverse community of *Dunaliella* (Chlorophyceae). *Journal of Phycology* **46**, 1038–1047.
- Cook SS, Whittock L, Wright SW and Hallegraef GM** (2011) Photosynthetic pigment and genetic differences between two Southern Ocean morphotypes of *Emiliania huxleyi* (Haptophyta). *Journal of Phycology* **47**, 615–626.
- de Vargas C, Audic S, Henry N, Decelle J, Mahé F, Logares R, Lara E, Berney C, Le Bescot N, Probert I, Carmichael M, Poulain J, Romac S, Colin S, Aury JM, Bittner L, Chaffron S, Dunthorn M, Engelen S, Flegontova O, Guidi L, Horák A, Jaillon O, Lima-Mendez G, Lukeš J, Malviya S, Morard R, Mulot M, Scalco E, Siano R, Vincent F, Zingone A, Dimier C, Picheral M, Searson S, Kandels-Lewis S, Acinas SG, Bork P, Bowler C, Gorsky G, Grimsley N, Hingamp P, Iudicone D, Not F, Ogata H, Pesant S, Raes J, Sieracki ME, Speich S, Stemmann L, Sunagawa S, Weissenbach J, Wincker P and Karsenti E** (2015) Eukaryotic plankton diversity in the sunlit ocean. *Science (New York, N.Y.)* **348**, 6237.
- González MA, Coleman AW, Gómez PI and Montoya R** (2001) Phylogenetic relationship among various strains of *Dunaliella* (Chlorophyceae) based on nuclear ITS rDNA sequences. *Journal of Phycology* **37**, 604–611.
- González MA, Gómez PI and Polle JEW** (2009) Taxonomy and phylogeny of the genus *Dunaliella*. In Ben-Amotz A, Polle JEW and Subba Rao DV (eds), *Dunaliella: Physiology, Biochemistry, and Biotechnology*. Boca Raton, FL: CRC Press, pp. 15–44.
- Guillard RRL and Ryther JH** (1962) Studies of marine planktonic diatoms. I. *Cyclotella nana* (Hustedt) and *Detonula confervaceae* (Cleve) Gran. *Canadian Journal of Microbiology* **8**, 229–239.
- Hall TA** (1999) Bioedit: a user-friendly biological sequence alignment editor and analysis program for Windows 95/98/NT. *Nucleic Acids Symposium Series* **41**, 95–98.
- Hejazi MA, Barzegari A, Gharajeh NH and Hejazi MS** (2010) Introduction of a novel 18S rDNA gene arrangement along with distinct ITS region in the saline water microalga *Dunaliella*. *Saline Systems* **6**, 4.
- Jahnke LS** (1999) Massive carotenoid accumulation in *Dunaliella bardawil* induced by ultraviolet-A radiation. *Journal of Photochemistry and Photobiology B: Biology* **48**, 68–74.
- Ki JS** (2012) 18S rRNA using a large dataset for marker considerations. *Journal of Applied Phycology* **24**, 1035–1043.
- Lane DJ** (1991) 16S/23S Sequencing. In Stackebrandt E and Goodfellow M (eds), *Nucleic Acid Technologies in Bacterial Systematics*. New York, NY: Wiley, pp. 115–175.
- Leliaert F, Verbruggen H, Vanormelingen P, Steen F, Lopez-Bautista JM, Zuccarello GC and De Clerck O** (2014) DNA-based species delimitation in algae. *European Journal of Phycology* **49**, 179–196.
- Lerche W** (1937) Untersuchungen ueber Entwicklung und Fortpflanzung in der Gattung *Dunaliella*. *Archiv fur Protistenkunde* **88**, 236–268.
- Massjuk NP** (1973) *Morphology, Taxonomy, Ecology and Geographic Distribution of the Genus Dunaliella Teod. and Prospects for its Potential Utilisation*. Kiev: Naukova Dumka Press.
- Massjuk NP and Radchenko MI** (1973) New taxa of the genus *Dunaliella* Teod. III. *Ukrainian Botanical Journal* **30**, 470–471.
- Medlin LK, Elwood HJ, Stickel S and Sogin ML** (1988) The characterization of enzymatically amplified eukaryotic 16S-like rRNA-coding regions. *Gene* **71**, 491–499.
- Moniz MBJ, Guiry M and Rindi F** (2014) *Tufa* phylogeny and species boundaries in the green algal order Prasiolales (Trebouxiophyceae, Chlorophyta). *Phycologia* **53**, 396–406.
- Muller J** (2005) *Genetic fingerprints of microalgal culture strains: amplified fragment length polymorphism (AFLP) for investigations below the species level* (PhD thesis). Universität zu Göttingen.
- Müller T, Philippi N, Dandekar T, Schultz J and Wolf M** (2007) Distinguishing species. *RNA* **13**, 1469–1472.
- Nozaki H, Itoh M, Sano R, Uchida H, Watanabe MM and Kuroiwa T** (1995) Phylogenetic relationships within colonial volvocales (Chlorophyta) inferred from *rbcL* gene sequence data. *Journal of Phycology* **31**, 970–979.
- Oliveira L, Bisalputra T and Antia NJ** (1980) Ultrastructural observation of the surface coat of *Dunaliella tertiolecta* from staining with cationic dyes and enzyme treatments. *New Phytologist* **85**, 385–392.
- Olmos SJ, Ochoa L, Paniagua-Michel J and Contreras R** (2009) DNA fingerprinting differentiation between β -carotene hyperproducer strains of *Dunaliella* from around the world. *Saline Systems* **5**, 5.
- Olmos-Soto J, Paniagua-Michel J, Contreras PR and Trujillo L** (2002) Molecular identification of β -carotene hyper-producing strains of *Dunaliella* from saline environments using species-specific oligonucleotides. *Biotechnology Letters* **24**, 365–369.
- Polle JEW, Jin ES and Ben-Amotz A** (2020) The alga *Dunaliella* revisited: looking back and moving forward with model and production organisms. *Algal Research* **49**, 101948.
- Preetha K, John L, Subin CS and Vijayan KK** (2012) Phenotypic and genetic characterisation of *Dunaliella* (Chlorophyta) from Indian salinas and their diversity. *Aquatic Biosystems* **8**, 27.
- Scholin CA, Herzog M, Sogin M and Anderson DM** (1994) Identification of group- and strain-specific genetic markers for globally distributed *Alexandrium* (Dinophyceae). II. Sequence analysis of a fragment of the LSU rRNA gene. *Journal of Phycology* **30**, 999–1011.
- Tamura K, Stecher G, Peterson D, Filipski A and Kumar S** (2013) MEGA6: Molecular Evolutionary Genetics Analysis Version 6.0. *Molecular Biology and Evolution* **30**, 2725–2729.
- Teodoresco EC** (1905) Organisation et développement du *Dunaliella*, nouveau genre de Volvocacée-Polyblépharidé. *Beihefte zum Botanischen Centralblatt* **18**, 215–232.
- Wilcox LW, Lewis LA, Fuerst PA and Floyd GL** (1992) Group I introns within the nuclear-encoded small-subunit rRNA gene of three green algae. *Molecular Biology and Evolution* **9**, 1103–1118.
- Xu Y, Ibrahim IM, Wosu CI, Ben-Amotz A and Harvey PJ** (2018) Potential of new isolates of *Dunaliella salina* for natural β -carotene production. *Biology* **7**, 14.