

*In the eye of the flourish wheel: an  
assessment of users' health, well-being  
and productivity in university research  
rooms*

Article

Accepted Version

Al-Dmour, Y. ORCID: <https://orcid.org/0000-0003-4341-8506>,  
AlQaralleh, H. ORCID: <https://orcid.org/0000-0003-4181-1670>,  
Garaj, V. ORCID: <https://orcid.org/0000-0002-1661-597X> and  
Clements-Croome, D. ORCID: <https://orcid.org/0000-0001-5116-8821> (2023) In the eye of the flourish wheel: an  
assessment of users' health, well-being and productivity in  
university research rooms. *Intelligent Buildings International*,  
15 (3). pp. 131-156. ISSN 1756-6932 doi:  
10.1080/17508975.2023.2188158 Available at  
<https://centaur.reading.ac.uk/111737/>

It is advisable to refer to the publisher's version if you intend to cite from the  
work. See [Guidance on citing](#).

To link to this article DOI: <http://dx.doi.org/10.1080/17508975.2023.2188158>

Publisher: Taylor & Francis

All outputs in CentAUR are protected by Intellectual Property Rights law, including copyright law. Copyright and IPR is retained by the creators or other copyright holders. Terms and conditions for use of this material are defined in the [End User Agreement](#).

[www.reading.ac.uk/centaur](http://www.reading.ac.uk/centaur)

## **CentAUR**

Central Archive at the University of Reading

Reading's research outputs online

# *In the eye of the flourish wheel: an assessment of users' health, well-being and productivity in university research rooms*

Article

Accepted Version

Al-Dmour, Y., AlQaralleh, H., Garaj, V. and Clements-Croome, D. (2023) In the eye of the flourish wheel: an assessment of users' health, well-being and productivity in university research rooms. *Intelligent Buildings International Journal*. pp. 1-26. ISSN 1750-8975 doi: <https://doi.org/10.1080/17508975.2023.2188158> Available at <https://centaur.reading.ac.uk/111862/>

It is advisable to refer to the publisher's version if you intend to cite from the work. See [Guidance on citing](#).

Published version at: <https://doi.org/10.1080/17508975.2023.2188158>

To link to this article DOI: <http://dx.doi.org/10.1080/17508975.2023.2188158>

Publisher: Taylor & Francis

All outputs in CentAUR are protected by Intellectual Property Rights law, including copyright law. Copyright and IPR is retained by the creators or other copyright holders. Terms and conditions for use of this material are defined in the [End User Agreement](#).

[www.reading.ac.uk/centaur](http://www.reading.ac.uk/centaur)

## **CentAUR**

Central Archive at the University of Reading

Reading's research outputs online

# In the eye of the flourish wheel: an assessment of users' health, well-being and productivity in university research rooms

Younma Al-Dmour<sup>a</sup>, Huthaifa AlQaralleh<sup>b</sup>, Vanja Garaj<sup>c</sup> and Derek Clements-Croome<sup>d,e</sup>

<sup>a</sup>Department of Design, Brunel University London, London, UK; <sup>b</sup>Economics, Business and Finance Department, Mutah University, Al-Karak, Jordan; <sup>c</sup>Brunel Design School, Brunel University London, London, UK; <sup>d</sup>University of Reading, London, UK; <sup>e</sup>Queen Mary University, London, UK

## ABSTRACT

Indoor Environmental Quality (IEQ) is an immense concern for people's wellness. The central argument in this research is that the IEQ in a university research room impacts users and their health, well-being and productivity. In addition, the present study relies on the Flourish Wheel to enhance the environment using the Biophilic Design approach, which in turn influences users' satisfaction and work performance in five research rooms at Brunel University London. These rooms are situated in the same outdoor environment of a single university campus, but house multi-disciplinary occupants and vary in construction age, size, methods of ventilation and mode of thermostatic control. The current research paper firstly investigated the role of IEQ factors and sub-factors on occupants' health, well-being, and productivity. Secondly, evaluated the possibility of improving the indoor workplace environment using Biophilic Design patterns. The most prominent finding is that the qualities of the five critical aspects of IEQ have significantly positive correlations with the occupants' wellness. Another significant result is that the 14 Biophilic Design framework patterns can holistically offer different ways to improve the research rooms based on various environmental issues. The findings proposed in this study could be valuable both for design practitioners and academic researchers.

## KEYWORDS

Flourish wheel; biophilic design; academic workplaces; indoor environmental quality; Post Occupancy evaluation

CONTACT: Youmna Al-Dmour 1744233@brunel.ac.uk

## 1. Introduction

Humans spend most of their time indoors and a large proportion of the world's community live in urban areas and works in an office environment. There has been a vital global shift in the economy from the manufacturing sector towards the service and knowledge-based industries, which operate in indoor office environments (Haynes 2008; WGBC 2014). Hence, it is becoming essential to understand the indoor office environment and its effect on occupant wellness.

The recent trend of designing and building research rooms (or study rooms) in colleges and universities has led to renewed interest in the concept of 'open-plan offices'<sup>1</sup> because of its use advantages favourable economic outcomes. Moreover, these research spaces are seen as valued parts of the university environment, contributing significantly to the quality of research outputs (Walford 1983). However, one of the most significant challenges in designing and building such spaces is achieving a healthy environment, especially for those researchers who spend most of their time working in the research rooms.

The influence of environmental design on people's wellbeing and productivity has been studied in some settings, such as open-plan offices in hospitals and elementary schools. However, Biophilic Design in university research rooms remains understudied and it therefore warrants a closer investigation.

In the twentieth century, the seminal work of Maslow (Maslow 1943) used the Human Needs Theory to address the poor IEQ, which impairs people's health, well-being and productivity (see also Vernon and Bedford 1930, on air quality). Since then, the influence of the indoor environment on workplace productivity has been widely studied. A strand of the literature addresses the direct effects of IEQ on human comfort (see, for example, Bordass, Bromley, and Leaman 1993; Leaman and Bordass 1999; Bordass et al. 2001a, 2001b; Collinge et al., 2014; Tsushima, Tanabe, and Utsumi 2015). Another strand of scholarship concerns the direct impact of IEQ on wellbeing (MacKerron and Mourato 2013; Council 2014).

Traditionally, these papers have considered five physical factors that influence occupants' health, well-being and productivity, namely, thermal comfort (Fanger 1982; Tanabe, Nishihara, and Haneda 2007; Djongyang, Tchinda, and Njomo 2010; Lan, Wargocki, and Lian 2011; Kaushik et al. 2020); indoor air quality (Wargocki 2000; Fisk, Black, and Brunner 2012; Mujan et al. 2019), lighting comfort (Hopkinson and Harris 1966, Alrubaih et al. 2013; Poria et al. 2013; Zhang et al. 2020), acoustic comfort (Banbury and Berry 2005, Wong, Mui, and Hui 2006; Di Blasio et al. 2019), and office layout (Laing et al. 1998; Haynes, Suckley, and Nunnington 2017; Candido et al. 2019).

The above studies show the impact of IEQ factors on the occupants' satisfaction and productivity. However, the application of Biophilic Design, including green architecture solutions, is not significantly covered in the standard methods of improving the IEQ of existing buildings.

Broadly, humans are inexorably tied to the larger natural world, and the human-nature relationship is fundamental and instinctive (Kellert and Wilson 1993; Wilson 1984). This relationship is the basis for the Biophilic Design hypothesis, and by extension, a basic principle of Biophilic Design (Kellert 2012; Kellert, Heerwagen, and Mador 2011). Thus, if the indoor environment constructed with healthy and prosperous natural spaces benefits our basic needs and wellbeing, as the Biophilic Design hypothesis claims, then nowhere is the need for ensuring a good and healthy connection to nature more critical than in the places where people live, work and spend the majority of their daily lives.

In this vein, a study by Peters and D'Penna (2020) has analysed almost 30 studies and they concluded that nearly none of the relevant studies included a reference to 'Biophilia' or 'Biophilic Design', nor did they mention the Biophilic patterns that the authors have categorised them in this paper.

Motivated in part by these observations, the research reported in this paper was conducted in response to the need to enrich the existing knowledge of the role of Biophilic design in human health and wellbeing, by shedding light on the indoor environmental conditions of open-plan research offices in five different buildings at the Brunel University London, and to assess the significance of using Biophilic Design patterns to improve the IEQ factors in the buildings in question.

Recently, a broader perspective has been adopted by Sanchez, Ikaga, and Sanchez (2018) who, argue that Biophilic Design features have been identified as critical drivers of well-being and performance in the workplace (see also Al Horr et al. 2017; Soga et al. 2018). For instance, wooden interiors, a propitious temperature and physical activity promote an independent impact on users' cognitive function, performance, health and well-being (Cooper 2011). Similarly, Al-Dmour, Garaj, and Clements-Croome (2020) and Clements-Croome, Bowman, and Al-Dmour (2021) suggest that Biophilia<sup>2</sup> helps control the quality of the indoor environment.

Bringing elements of the natural environment or greenery within the workplace positively impacts the occupants' productivity as it reduces the stress in occupants (Kellert, Heerwagen, and Mador 2008; Gray and Birrell 2014). Further, interior plants improve indoor air quality (Lohr, Pearson-Mims and Goodwin 1996). As noted above, they help minimise the pollution in the office by reducing the volatile organic compounds produced by various indoor furniture or synthetic materials (Grinde and Patil 2009). The passive viewing of natural stimuli through windows can reduce discomfort and improve the positive mood of the occupants (Heerwagen and Heerwagen 2003).

A field study has shown that occupants with a window view of nature were more satisfied than occupants with a view only of the built environment (Kaplan and Kaplan 1989). Generally, nature helps to minimise stress levels and anxiety even when only seen from a window. Windows with views of nature and plants have been mentioned as helpful in reducing occupants' tension and anxiety and increasing their productivity and well-being (Chang and Chen 2005). An American psychological study claims that Biophilic Design also helps balance office temperature and humidity levels, which can be achieved by using plants and radiant surface materials (Kellert, Heerwagen and Mador 2008).

## 2. Post-occupancy evaluation

This study investigated how the qualitative environmental factors of health, well-being and productivity can be affected by the environmental factors (IEQ) in university research rooms that enhance the environment using the Biophilic design approach. The study surveyed the academic researchers in five different research rooms at Brunel University to identify the key challenges, opportunities and barriers to improving university research rooms.

The first part of this study focuses on the indoor environmental conditions of open-plan research rooms as they pertain to health, well-being, and productivity. Table 1 shows the main strands of the last decade's POE work that has been developed by academic researchers and preceded the Flourish Model in understanding the occupant's well-being and used to assess factors in workplaces:

The second phase, however, involved adopting the evaluation model of Derek Clements-Croome (2016, 2018, 2021a, 2021b), who created and developed the Flourish Wheel, a tool designed to help create environments that help people Flourish in living and work. The Flourish Wheel is used as a POE (Post Occupancy Evaluation) for the buildings to evaluate the actual situation from three point of view, the environmental factors (objective design parameters, subjective design parameters), perceptions and economic consequences of the environment, as shown in Figure 1.

Using this Flourish Model can be conducted through the following steps:

- (1) Work with client needs with Flourish Model aspects.
- (2) Use a sample survey of occupants using questions based on the Flourish wheel in Figure 1.
- (3) Use a multi-factor decision-making approach to analyses results and derive a predesign map using the Flourish Wheel.
- (4) At the POE stage, collect data from the environment, and people repeat the analysis.
- (5) Recommend any changes using Biophilic Design.

Together, as for enhancing the chosen university rooms, this research is going to follow the 14 Patterns of Biophilic Design milestone. It aims to create spaces that are inspirational, refreshing, healthy, as well as

Table 1. The most recent POE models.

Model	MASLOW	PERMA	SALIENCE	BALANCED	FLOURISH
Author	Maslow	Seligman	Dolan	Lily Berheimer	Clements-Croome
Year	1943	2011	2016	2017	2016/2018
Evaluation factors	Self-Actualisation	Positive emotion	Sound	Biophilia-material, views and patterns	Subjective Design Parameters: Space, Layout and functionality, Character, Colour, Aesthetics, Views, Greenery/Nature, Objective Design Parameters: Daylight, Air Quality, Noise, Pollution, Temperature, Dampness.
	Esteem	Engagement	Air	Atmospheric light, air quality, temperature and smell	Perceptual Impact: Health and Wellbeing, Happiness and satisfaction, decreased stress, empowerment and achievement, safety and security, personal relationship, community.
	Social	Positive relationships	Light	Layout-space quality, circulation	Economic Impact: decreased public spending, increased asset value, higher rental rates, productivity and performance, absenteeism and presenteeism, prosperity and social capital.
	Safety	Meaning	Image	Amenities – nutrition, movement, ergonomics	
	Physiological	Accomplishment/achievement	Ergonomics Nature	Noise Cohesion – community, communication	
			Colour	Energy-resources and waste Design-Colour, shape, materials, proportions, detail and style	

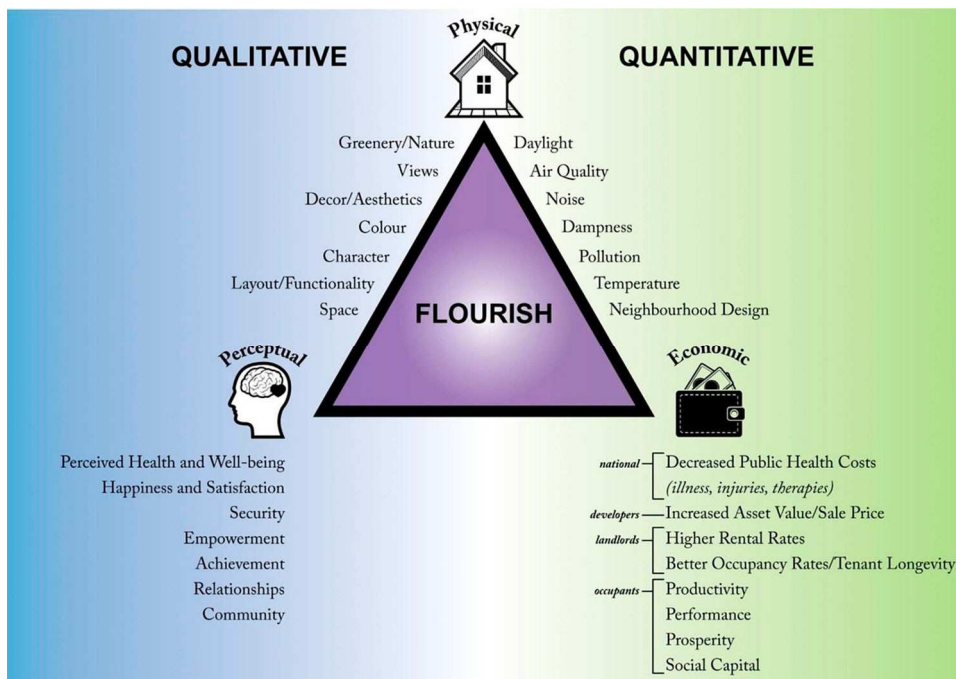


Figure 1. The flourish model.

integrative with the functionality of the place and the (urban) ecosystem. This milestone also helps in understanding how to implement Biophilic design in three pillars; First, Nature in the space, which is about the incorporation of plants, water and animals into the built environment, second, the Natural Analogues, which include the materials and patterns that evoke nature, and finally, Nature of the space which explains the psychological and physiological responses to spatial configurations.

- (1) Based on the previous literature, the researcher connected the 14 patterns of Biophilic Design and the IEQ factors and sub-factors that primarily affect the occupants' health, well-being and productivity, as in Table 2.

In the next stage of this research, four models were estimated through regression analysis to assess the direct impact of the IEQ factors on productivity. The final stage used correlation analysis to evaluate the potential effects of improving conditions in these indoor workplaces according to the patterns of Biophilic Design.

### 3. Occupant surveys

To conduct an IEQ assessment on productivity and health from the occupants' point of view and to suggest the potential of adapting the 14 Biophilic Design patterns, a cross-sectional survey was designed to answer the research question: How do the IEQ factors and sub-factors affect the occupants in the open-plan workplaces, which have the same outdoor but different indoor environments. The questionnaire was administered between January and February 2020. It should be noted that an ethical approval for the study was obtained from the ethics department of the university before sending the invitation link to the occupants of the workplaces in question.

To explain the relationship between IEQ factors and the Flourish Wheel sub-factors, Figure 2 below shows that the Flourish model focuses on how fresh or polluted the air in the office environment is for the Indoor Air Quality at the same time, the thermal comfort is mainly concerned with the level of both temperature and humidity; this view is supported by (Wolkoff 2018, Langer et al. 2016, Shahzad et al.



Table 2. The link between the patterns of Biophilia and the IEQ factors and sub-factors.

IEQ factors and sub-factors		Biophilia patterns	Reference
Thermal comfort	Temperature Humidity	<ul style="list-style-type: none"> <li>Non-Visual Connection with Nature (Pattern 2)</li> <li>Thermal &amp; Airflow Variability (Pattern 4)</li> <li>- Connection with Natural Systems (Pattern 7)</li> </ul>	<ul style="list-style-type: none"> <li>Berman, M.G.; Jonides, J.; Kaplan, S. The cognitive benefits of interacting with nature. <i>J. Psychol. Sci.</i> 2008, 19, 1207–1212. [CrossRef]</li> <li>Windhorst, E.; Williams, A. 'It's like a different world': Natural places, post-secondary students, and mental health. <i>Heal. Place</i> 2015, 34, 241–250. [CrossRef] [PubMed]</li> <li>Stigsdotter, U.K.; Corazon, S.S.; Sidenius, U.; Refshauge, A.D.; Grahn, P. Forest design for mental health promotion – Using perceived sensory dimensions to elicit restorative responses. <i>Landsc. Urban Plan.</i> 2017, 160, 1–15. [CrossRef]</li> <li>Shi, S.; Man, Y.; Wang, Z.; Wang, L.; Zhang, X. On site measurement and analysis on indoor air environment of classroom in university campus. <i>Procedia Eng.</i> 2017, 205, 2200–2207. [CrossRef]</li> </ul>
Indoor Air Quality	Fresh air quality Polluted Air Greenery and nature	<ul style="list-style-type: none"> <li>Visual Connection with Nature (Pattern 1)</li> <li>Non-Visual Connection with Nature (Pattern 2)</li> <li>Non-Rhythmic Sensory Stimuli (Pattern 3)</li> <li>Connection with Natural Systems (Pattern 7)</li> </ul>	<ul style="list-style-type: none"> <li>Windhorst, E.; Williams, A. Bleeding at the roots: Post-secondary student mental health and nature affiliation. <i>Can. Geogr.</i> 2016, 60, 232–238. [CrossRef]</li> <li>Putri, N.T.; Amrina, E.; Nurnaeni, S. Students' perceptions of the implementation of sustainable campus development based on landscape concepts at Andalas University. <i>Procedia Manuf.</i> 2020, 43, 255–262. [CrossRef]</li> </ul>
Acoustics	Noise	<ul style="list-style-type: none"> <li>Non-Rhythmic Sensory Stimuli (Pattern 3)</li> <li>Non-Visual Connection with Nature (Pattern 2)</li> <li>Visual Connection with Nature (Pattern 1)</li> </ul>	<ul style="list-style-type: none"> <li>Jahncke, H.; Hygge, S.; Halin, N.; Green, A.M.; Dimberg, K. Open-plan office noise: Cognitive performance and restoration. <i>J. Environ. Psychol.</i> 2011, 31, 373–382. [CrossRef]</li> </ul>
Lighting	Daylight	<ul style="list-style-type: none"> <li>Dynamic and Diffuse Light (Pattern 6)</li> <li>Biomorphic Forms &amp; Patterns (Pattern 8)</li> </ul>	<ul style="list-style-type: none"> <li>IESNA. The IESNA Lighting Handbook: Reference and Application; Illuminating Engineering Society of North America: New York, NY, USA, 2000.</li> <li>Karlen, M.; Benya, J.R. <i>Lighting Design Basics</i>; John Wiley &amp; Sons, Ltd.: Hoboken, NJ, USA, 2004.</li> </ul>
Layout	Layout and functionality Spaces	<ul style="list-style-type: none"> <li>Dynamic and Diffuse Light (Pattern 6)</li> <li>Non-Visual Connection with Nature (Pattern 2)</li> <li>Biomorphic Forms &amp; Patterns (Pattern 8)</li> <li>Material Connection with Nature (Pattern 9)</li> <li>Complexity and Order (Pattern 10)</li> <li>Prospect (Pattern 11)</li> </ul>	<ul style="list-style-type: none"> <li>Bellia, L.; Pedace, A.; Barbato, G. Lighting in educational environments: An example of a complete analysis of the effects of daylight and electric light on occupants. <i>Build. Environ.</i> 2013, 68, 50–65. [CrossRef]</li> <li>Felsten, G. Where to take a study break on the college campus: An attention restoration theory perspective. <i>J. Environ. Psychol.</i> 2009, 29, 160–167. [CrossRef]</li> </ul>

2018). Furthermore, the absence of fresh air with an environment full of pollution, create higher rates of dissatisfaction from occupants and a range of health problems (Fisk, Black, and Brunner, 2012; Bluysen 2019). Allergy symptoms, asthma and Sick Building Syndrome (SBS) are among the more critical health problems recorded (Silva et al. 2017).

Numerous studies have shown that natural light in office spaces improves worker satisfaction and productivity; the Flourish Model focuses on the daylight factor as part of the lighting environment because, as mentioned previously, humans spend 80–90 per cent of their time indoors. It's more important than ever to make sure natural light is available for everyone within an office environment, this can be explained by the literature of (Beute and de Kort 2018, Li and Lam 2001; Li 2010; Mansfield 2018). The absence of daylight

## The FLOURISH WHEEL

An assessment tool for health and well-being

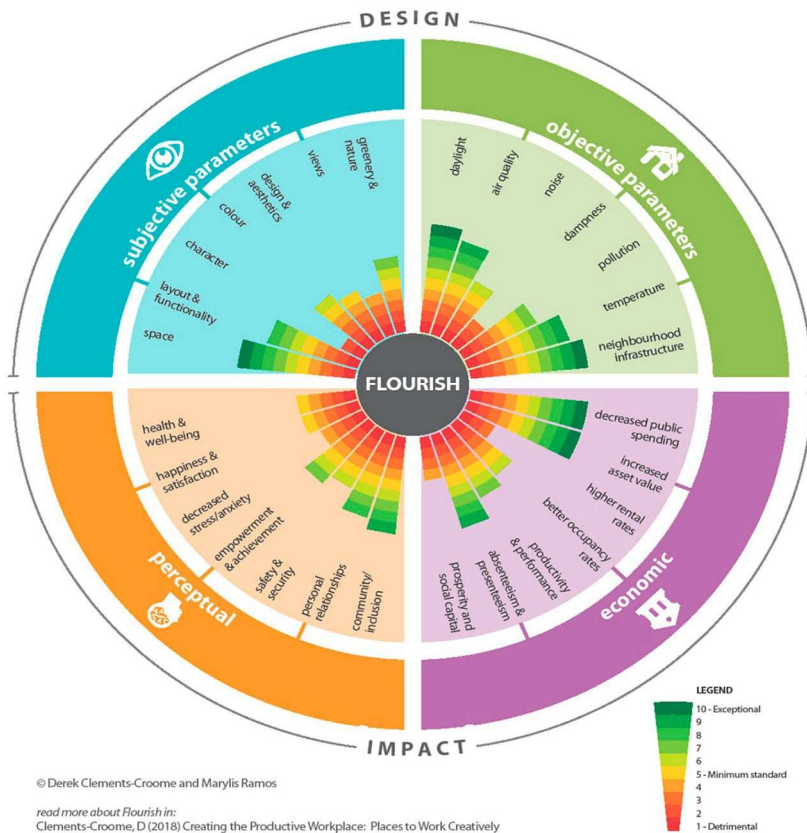


Figure 2. The flourish wheel.

affects the occupants' health and wellbeing; it is recommended that providing excellent colour is the optimal light source for visual comfort and human health.

The acoustics are also crucial for the noise from its different resources. The Flourish Model highlighted that the open plan office noise might negatively impact employees' fatigue, performance, and motivation (Jahncke and Halin 2012; Clements-Croome, Turner and Polaris 2019). Finally, the layout has ample attention as part of the subjective parameters, and it mainly concerns the spaces and the functionality, as supported by (Haynes 2008; Lee 2010).

It was relevant to understand how the IEQ factors and sub-factors affected the doctoral and post-doctoral researchers in five research rooms at Brunel University, with the same outdoor environment, but different indoor environments. The chosen research rooms are used by Brunel Design School in Michael Sterling Building, the Accounting department in the Eastern Gateway Building, the Computer Science department in Wilfried Brown building, the Economic department in Marie Jahoda Building and the Civil Engineering department in Howell Building.

The survey instrument (shown in Appendix 1) addressed the five facets of the IEQ aspects that most affect each occupant's health, well-being and productivity in the workplace, among a broad selection of questions constructed based on the IEQ across their workplaces: The information from the survey consisted of:

- (1) Background information
- (2) Post-occupancy evaluation for the workplace was conducted to show which IEQ factors affected occupants' health and well-being the most. The questions were based on the sub-factors used in the Flourish Model.

- (3) The relation between the IEQ factors and the occupants’ productivity.
- (4) The potential for adding Biophilic design patterns to resolve the IEQ issues in the workplace.

The results are entirely based on those completed questions deemed appropriate for analysis. The coding phase involved assigning binary variables to the user responses in the SPSS data file. Moreover, the quantitative survey scale grading is divided into seven satisfying levels from strongly disagree (1) to strongly agree (7) to follow the Flourish Wheel rating method, which includes a moderate or neutral midpoint, and 7-point scales are known to be the most accurate scales as it relates to an agreement that would be distinct enough for the respondents, without throwing them into confusion.

The results have been presented on three levels; the first one is a qualitatively descriptive analysis of the occupants’ satisfaction as well as their health and well-being in each one of the five offices, as in Table 3 below;

Then there’s the second level of the analysis which quantitatively measures the occupants’ productivity in each one of the rooms based on four variables that best contribute to human productivity. These variables were personal control, responsiveness, building depth, and workgroups.

And finally, the third level of the results shows the correlation analysis to improve the study rooms using the Biophilic patterns.

As for the survey sampling, for tiny populations ( $n < 100$ ), there’s a need for almost the entire population to achieve accuracy. There is a limit on the accuracy you can achieve when dealing with small sample. Therefore, the research sample size for this study is set out as Table 4, since the Confidence Level is 95%, and the Margin of Error is 5%.

4. Overview of IEQ in Brunel University’s research rooms

This study was conducted at Brunel University London in wintertime; it is located in the Uxbridge area of London, England. The study evaluated the IEQ factors of the research rooms in five buildings, each of which has a number of multi-disciplinary occupants, varies in size, methods of ventilation (including different types of windows), mode of thermostatic control and level of use of electrical equipment.

The first office was the doctoral and post-doctoral researchers’ room in the Michael Sterling building (Figure 3). It is an open-plan office consisting of 15 occupied desks. It has two doors (the main entrance and an emergency exit) and an elevation with large windows giving direct access to the outside environment.

The Howell Building (Figure 4) housed the second post-graduate room selected. This open-plan office can accommodate 20 doctoral and post-doctoral researchers. It has two doors but no windows; in particular, it has no access to fresh air, it is the oldest building in the university.

Table 3. Descriptive analysis.

Descriptive analysis		Location
IEQ factors:	Indoor Environment Quality sub-factors	For Each one of the five offices
(1) Thermal comfort	Health and well-being	
(2) Indoor Air Quality		
(3) Acoustics		
(4) Lighting		
(5) Layout		

Table 4. Sample size.

Main group	Sub-group	Number of the occupants in each room	Minimum sample Size
Doctoral and Post-Doctoral Researchers workplaces	Michael Sterling	15	15
	Howell	20	20
	Marie Jahoda	11	11
	Eastern	20	20
	Gateway		
	Stem Centre	15	15
Total			81

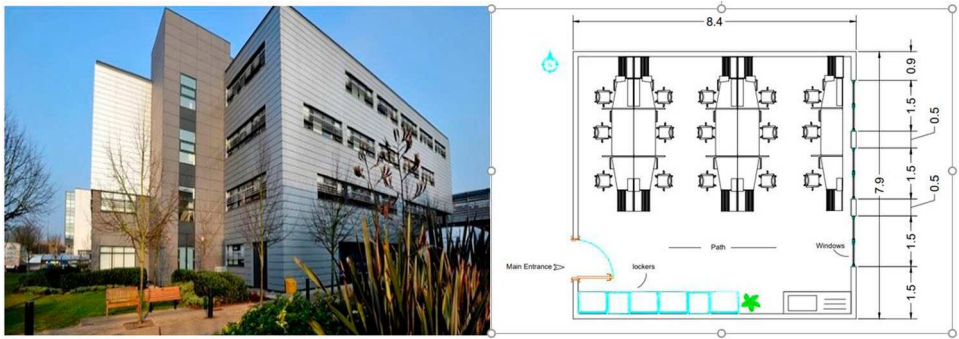


Figure 3. Michael Sterling building.

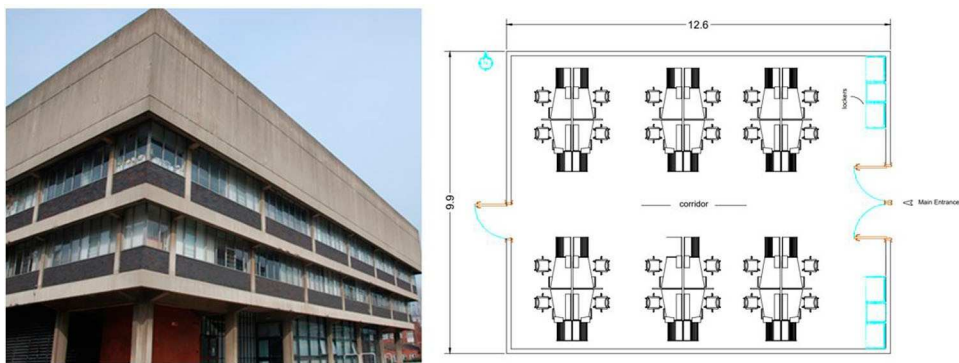


Figure 4. Howell building.

The third workplace was located in Marie Jahoda building which is one of its old buildings in the university. Its small open-plan research room has two windows and one main door (Figure 5).

Wilfried Brown building which include the Stem Centre, and it is where the computer science department is located, was the fourth building in the study to be considered. It is one of the newest buildings on campus. Many forms of technology have been incorporated into this building, including photovoltaic panels, temperature regulation systems and rainwater harvesting. The room for the computer science department is occupied by 15 doctoral and post-doctoral researchers and is open plan in type. It has two doors and large windows along the elevation, constructed of glass (Figure 6).

the Eastern Gateway Building is last considered building which is rated BREEAM Excellent. This building was planned, built, and occupied to ensure the most significant efficiency in energy and water use and the lowest carbon emissions possible. It uses natural ventilation for cooling and has reduced glazed areas to minimise solar gain. It also uses some renewable energy technologies (Figure 7).

#### 4.1. IEQ factors and sub-factors

The sub-factors for the IEQ in the office building were chosen based on the Flourish Wheel design. It was clear that the objective parameters are primarily related to IEQ aspects (Table 5), while the subjective parameters (Table 6) correspond to the space's layout and aesthetic values.

#### 4.2. Descriptive analysis

The first set of analyses examined the users' satisfaction in the research room with each of the IEQ sub-factors and discussed how their health and well-being were used.

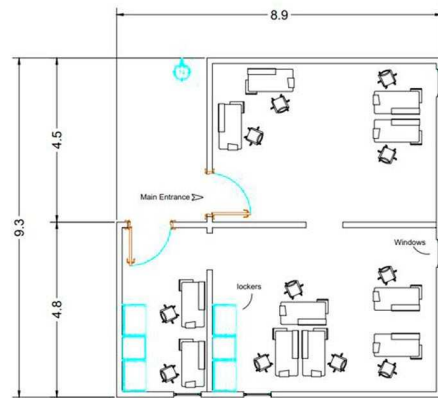


Figure 5. Marie Jahoda building.

The respondents were asked about their satisfaction with two main sub-factors, temperature and humidity, starting with the thermal environment. The results are set out in Table 7. As can be seen, the respondents in the Michael Sterling building (panel A of Table 7) and the Eastern Gateway Building (panel B of Table 7) are partially agreed about their satisfaction with the temperature and humidity levels in the office; the means in both cases are around 5 (Slightly Agree) out of 7 (Strongly Agree).

This result explains natural ventilation to cool buildings, reduced glazed areas, and orientating structures to minimise solar gain. However, the lack of a tool, a suitable kind of plant that could balance the humidity inside the office or even the HVAC system is how this space could be improved to satisfy the researchers' preferences about thermal comfort.

For the Marie Jahoda Building and the Howell Building, it can be seen from the data in panel C panels of Table 8 that the researchers disagreed that their office temperature (Mean = 2.27 and Mean = 2.52) and humidity (Mean = 2.45 and Mean = 1.60) levels suited their preferences. There are several possible explanations for this result. One is that these are among the university's oldest buildings. They were constructed of red brick, the windows were tiny, and the offices had an open-plan layout but still felt crowded. The researchers agreed that such an environment had a slightly negative effect on their health. Similarly, the participants who worked in the Stem Centre were not satisfied with either the temperature or the humidity because the glass used to construct the front elevation of the building allowed too much sunshine in summer to access the room; it unbalanced the indoor temperature and gave no shade.

Graphical information on the location, the dispersion and the skewness of a data set for which summary measures were introduced in Table 6 can be seen in Figures 8 and 9. As for Figure 8, it is apparent that the median of respondents' temperature satisfaction who used the Howell building is the greatest among the considered research rooms followed by those who used to be in the Michel sterling room. The picture almost not changed in Figure 9 where respondents' temperature satisfaction in the Michel sterling and Howell building is the largest among others.

Together, the results shown in those figures highlighted that the interquartile ranges are reasonably similar (as shown by the lengths of the boxes).

The second group of questions related to indoor air quality. The researchers were asked about the freshness of the air in their offices, how polluted it was, if the window arrangements helped to improve the air quality, and if their offices had any green features that could freshen the room's air respondents in the Michael Sterling building (panel A of Table 8), the Eastern Gateway Building (panel B of Table 8) and at the Stem Centre (panel E of Table 8), are agreed that their office admits fresh air through the windows. Still, they disagreed on whether it was occasionally polluted. However, the respondents strongly agreed that their office lacked green plants that would help to provide fresh air in the office. Some respondents also agreed that they experienced some annoying symptoms from the air conditions such as headache, dry eyes, coughs, sputum, itching nose and dry skin. The others, however, responded that the air quality in the office did not affect their health either positively or negatively.

The researchers in the sample who worked in the older premises such as the Marie Jahoda Building and the Howell Building (panels C and D of Table 8) disagreed that there were enough windows to control the



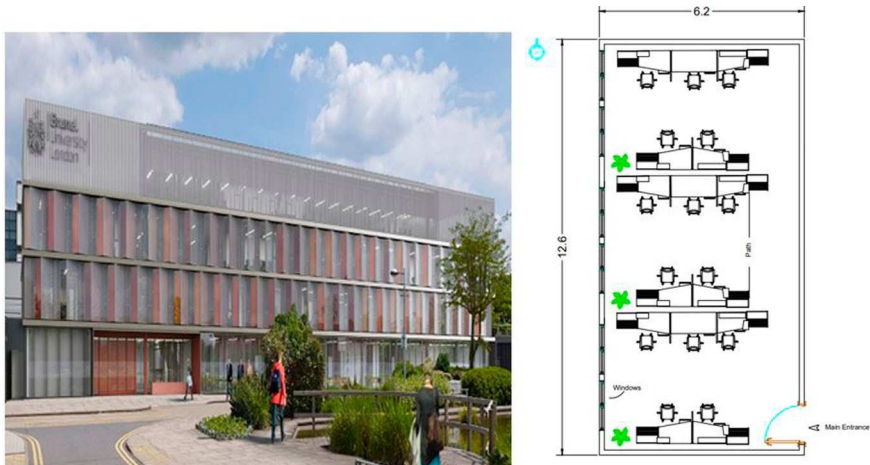


Figure 6. The Stem Centre.

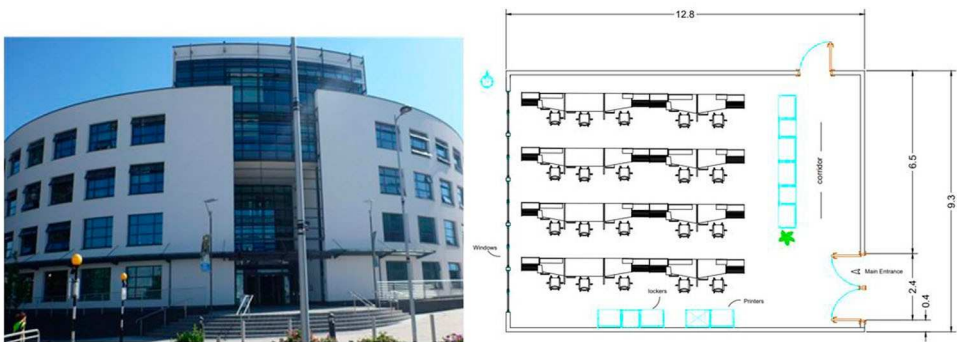


Figure 7. Eastern Gateway building.

Table 5. IEQ factors and subfactors according to the Flourish Wheel (objective parameters).

IEQ Factors	Objective Parameters (Design sub-factors)						
	a. Daylight	b. Air Quality	c. Noise	d. Dampness	e. Pollution	f. Temperature	infrastructure
1. Office layout							
2. Air quality							
3. Thermal environment							
4. Lighting environment							
5. acoustic environment							

Table 6. IEQ factors and subfactors according to the Flourish Wheel (Subjective parameters).

IEQ Factors	Subjective Parameters (Design sub-factors)						
	a. Space	b. Layout and functionality	c. Character	d. Color	e. Design and aesthetics	f. Views	g. Greenery and nature
1. Office layout							
Aesthetic Values (Indirect effect)							

Table 7. Analysis of the thermal environment.

	Temperature	Humidity	Health & Wellbeing
<i>Panel A; Michael Sterling</i>			
Mean	5.93	4.73	4.97
Std. Deviation	1.75	1.62	1.87
Variance	3.07	2.64	3.5
<i>Panel B; Eastern Gateway</i>			
Mean	5.3	5.8	1.7
Std. Deviation	1.42	1.79	1.22
Variance	2.01	3.22	1.48
<i>Panel C; Marie Jahoda</i>			
Mean	2.27	2.45	3.64
Std. Deviation	1.49	0.93	1.43
Variance	2.22	0.87	2.06
<i>Panel D; Howell</i>			
Mean	2.52	1.6	3.2
Std. Deviation	1.61	1.35	1.44
Variance	2.58	1.83	2.06
<i>Panel E; Stem Centre</i>			
Mean	2	2.87	2.13
Std. Deviation	1.73	1.51	1.68
Variance	3	2.27	2.84

Table 8. The indoor air quality.

	Fresh	Polluted	Health and wellbeing
<i>Panel A; Michael Sterling</i>			
Mean	5.53	2.53	4.4
Std. Deviation	1.77	1.6	1.59
Variance	3.12	2.55	2.54
<i>Panel B; Eastern Gateway</i>			
Mean	5.15	1.8	2.3
Std. Deviation	1.79	1.4	1.98
Variance	3.19	1.96	3.91
<i>Panel C; Marie Jahoda</i>			
Mean	2.27	3.82	3.18
Std. Deviation	1.35	1.25	1.17
Variance	1.82	1.56	1.36
<i>Panel D; Howell</i>			
Mean	2.25	4.78	4.95
Std. Deviation	1.68	1.69	1.61
Variance	2.83	2.87	2.58
<i>Panel E; Stem Centre</i>			
Mean	5.73	5.4	2.13
Std. Deviation	1.71	1.55	1.19
Variance	2.92	2.4	1.41

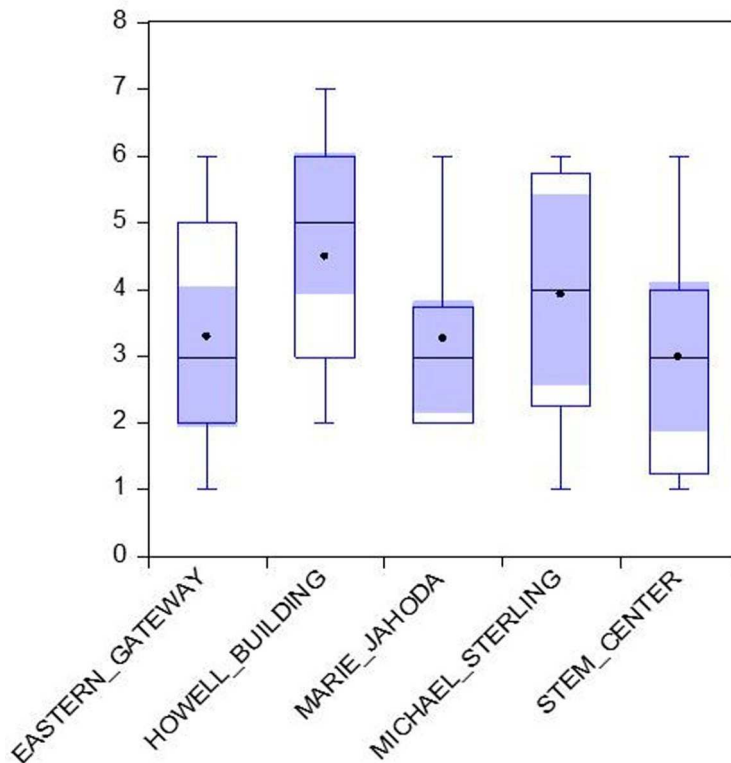


Figure 8. Box plot of respondents' temperature satisfaction.

variable airflow in the space, and no plants or green features in the office, which slightly affected their health and well-being (Mean = 3.18).

The information introduced in Table 8 is represented graphically as shown in Figures 10 and 11. These Figures complement each other in which those who satisfied with the degree of fresh air in the building (as in Michel Sterling and Stem Centre) are less annoyed by the pollution degree inside these rooms compared with those who use other buildings.

Again, the results shown in those figures highlighted that the interquartile ranges are reasonably similar (as shown by the lengths of the boxes).

The purpose of the third set of questions was to examine the respondents' satisfaction with the noise level in their office and the acoustic environment. Out of the five considered buildings, only the researchers in the Michael Sterling building (see Panel A of Table 9) and the Stem Centre (presented in Panel E of Table 9) agreed that they were satisfied with the acoustic levels in their room; the only source of noise for them came from the traffic outdoors. As a result, they agreed that their hearing, health and well-being were unaffected. The only type of noise in the office, according to the participants, was the conversations around them because of the open-plan spatial layout of the office.

As for the rest of our sample, the researchers slightly disagreed with their satisfaction with the noise level in their office. They reported that they were always aware of both telephone and other conversations and noise from the heating, ventilation, air conditioning (HVAC) and machines. The results also show that this noise level hurts the quality of their hearing and increases stress, which negatively affects their productivity.

In Figure 12 these facts are presented in which the similarity among the respondents are evidenced as shown by the lengths of the boxes. With the exception of Michael Sterling in which the respondent's show more scattered data (Larger ranges indicate wider distribution).

Fourth, when asked about the lighting environment, the researchers were invited if their office had enough access to daylight. The results in Table 10 show that they agreed that the new buildings, including the Michael Sterling building (Panel A of Table 10), the Eastern Gateway Building (panel B of Table



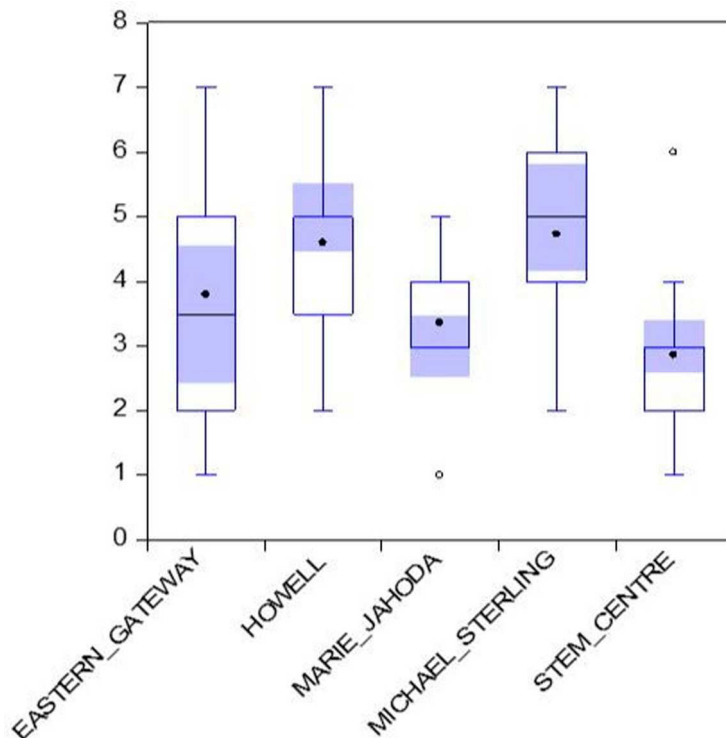


Figure 9. Box plot of respondents' humidity satisfaction.

10) and at Stem Centre (Panel E of Table 10) have good access to daylight through the windows. However, they disagreed that the light in their offices negatively affects the health of their vision. A possible reason is the use of intelligent fluorescent and LED lighting in many building areas; high-efficiency light fittings and LED lighting have movement sensors to detect when people are present and switch off lighting at other times.

Regarding the Howell and Marie Jahoda buildings, the researchers highlight that their rooms had no adequate openings or windows; this prevented the access of daylight, which in turn had a bad environmental influence on the occupants' health and well-being. The results in panels B and C of Table 10 also show that the researchers strongly agreed that constant working in artificial light negatively affects their vision, which affects their productivity. These facts are explained in Figure 13. It is worth noting that in Figure 15 the respondents in Howell building have the most dispersed answer as shown by the longer box.

Finally, the researchers were asked about their satisfaction with the general layout of their office and its orientation, the space between the desks, and the neighbourhood design's effect on the office in specific. The results show that those researchers from the Michael Sterling building (shown in Panel A of Table 11) as well as those who used the offices in the Stem Centre were satisfied with the orientation of the office and with the space between all the desks but had slight reservations about the design of the neighbourhood: their office had some views of greenery but not enough to make them feel comfortable.

Graphical information of a data set for which summary measures were introduced in Table 11 can be seen in Figures 14 and 15.

## 5. The direct impact of the IEQ factors on productivity

In this stage of the research, it was essential to evaluate perceived productivity in each office. This regression analysis would link the respondents' satisfaction with each IEQ factor with the researchers' perceived productivity factors as dependent variables. It is worth noting that, among others, Leaman & Bordass, who are members of the United Kingdom's (Usable Buildings Trust), listed what variables best contribute to human

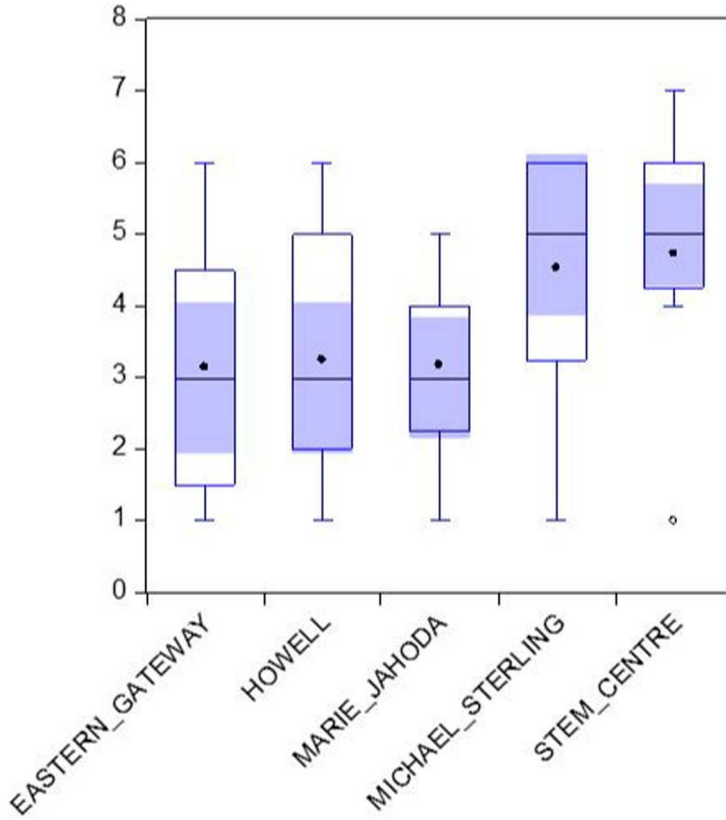


Figure 10. Box plot of respondents' fresh air satisfaction.

productivity. These variables were personal control, responsiveness, building depth, and workgroups. Personal management refers to the level of comfort experienced by individuals in their workplaces, which pertains to 'heating, cooling, lighting, ventilation and noise'. Responsiveness refers to the ability of a workplace environment to adapt to changes in employee needs. Building depth is its capacity to provide appropriate levels of natural ventilation, air conditioning and window arrangements. The variable of workgroups refers to the sheer size of groups working together in a workplace. Research suggests a delicate balance must be achieved between solitary individuals and large groups working together in an open environment (Leaman and Bordass 1999).

Below, we present regression analysis models investigating how the listed variables contribute to human productivity. Starting with the impact of the IEQ factors on the rooms to adapt to changes can be written as

$$Personal\ Control = a_1 Thermal + a_2 Air\ Quality + a_3 Acoustic + a_4 Lighting + a_5 Layout \quad (1)$$

Next in equation 2, the impact of the considered factors on the responsiveness can be expressed as

$$Personal\ Control = b_1 Thermal + b_2 Air\ Quality + b_3 Acoustic + b_4 Lighting + b_5 Layout \quad (2)$$

As for the effects of the IEQ on the building depth, the regression line can be estimated through equation three below

$$building\ depth = g_1 Thermal + g_2 Air\ Quality + g_3 Acoustic + g_4 Lighting + g_5 Layout \quad (3)$$

Last, the impact of the IEQ on Workgroups can be expressed as

$$Workgroups = d_1 Thermal + d_2 Air\ Quality + d_3 Acoustic + d_4 Lighting + d_5 Layout \quad (4)$$

It is worth mentioning that the vectors of parameter  $a_i$ ,  $b_i$ ,  $g_i$ ,  $d_i$  need to be estimated.

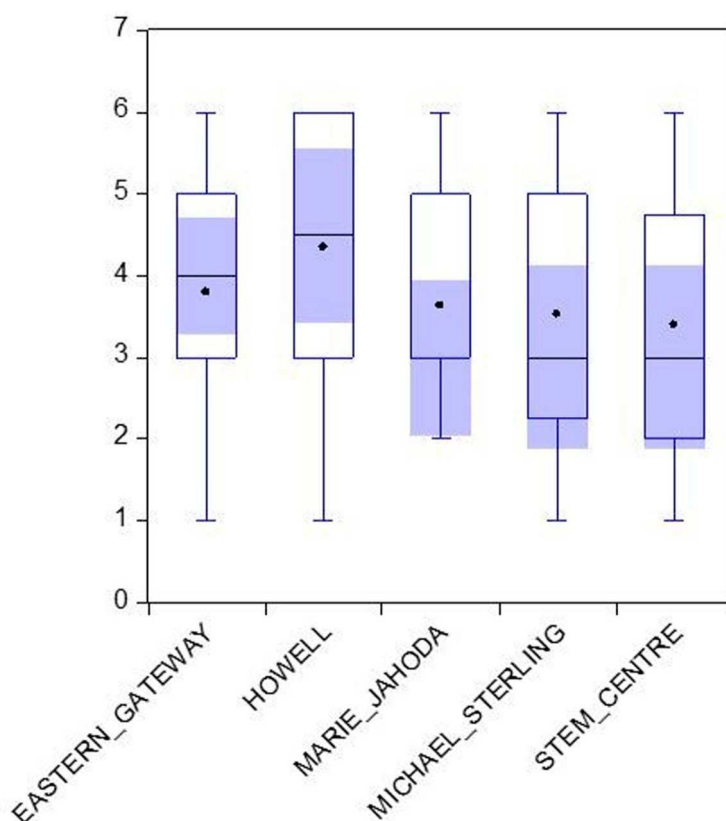


Figure 11. Box plot of respondents' polluted air satisfaction.

Table 9. Acoustic comfort.

	Noise	Health and wellbeing
<i>Panel A; Michael Sterling</i>		
Mean	5.27	2.67
Std. Deviation	1.18	1.76
Variance	1.39	3.1
<i>Panel B; Eastern Gateway</i>		
Mean	2.58	4.15
Std. Deviation	0.9	1.39
Variance	0.82	1.92
<i>Panel C; Marie Jahoda</i>		
Mean	2.36	5.73
Std. Deviation	0.92	1.62
Variance	0.85	2.62
<i>Panel D; Howell Building</i>		
Mean	3.07	4.55
Std. Deviation	0.94	1.82
Variance	0.88	3.31
<i>Panel E; Stem Centre</i>		
Mean	5.67	1.87
Std. Deviation	0.58	1.46
Variance	0.33	2.12

The results of the multiple analyses for the five buildings are summarised below. With the comfort level as the dependent variable, the overall model was statistically significant at  $r > 0.05$ , as suggested through the F-value. The proportion of variance explained by these regressors in the model is reasonably informative

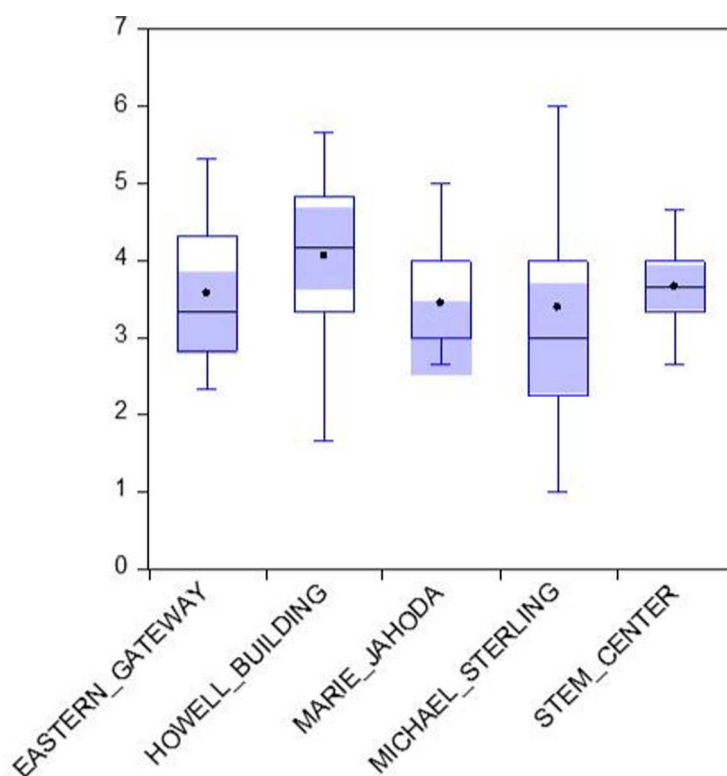


Figure 12. Box plot of respondents' acoustic satisfaction.

Table 10. Lighting environment.

	Daylight	Health & wellbeing
<i>Michael Sterling</i>		
Mean	5.87	1.33
Std. Deviation	1.51	1.91
Variance	2.27	3.67
<i>Eastern Gateway</i>		
Mean	5.4	4.7
Std. Deviation	1.57	1.72
Variance	2.46	2.95
<i>Marie Jahoda</i>		
Mean	2.36	5
Std. Deviation	1.03	1.41
Variance	1.06	2
<i>Howell</i>		
Mean	1.8	3.15
Std. Deviation	1.91	1.98
Variance	3.64	3.92
<i>Stem Centre</i>		
Mean	6.4	2.93
Std. Deviation	0.74	1.87
Variance	0.54	3.5

(see panel B of Table 12 for the values of  $R^2$ ). Furthermore, no serial correlation is found since the DW statistics are close to 2.

Furthermore, the model indicates that the results varied from one building to another. In specific, the results of the regression analysis show that almost all the IEQ factors in both Eastern Gateway and the

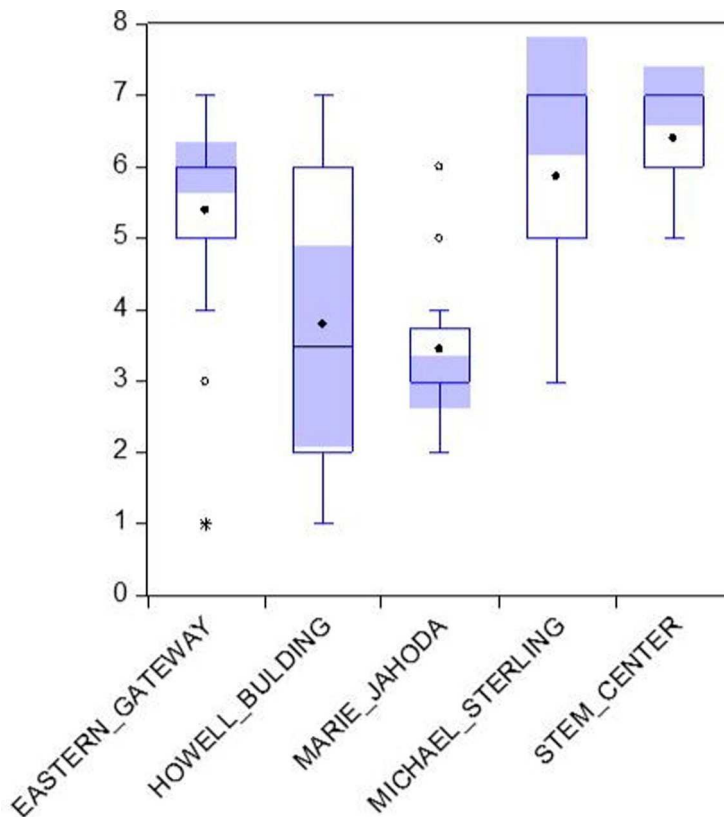


Figure 13. Box plot of respondents' daylight satisfaction.

Stem Centre have a significant positive impact on the rooms to adapt to changes. The same can be seen in the Michael Sterling building. A significant positive effect of the regressors is found except in the case of thermal comfort, which had a significant negative impact. The latter indicates that the unstable thermal environment affected the researchers' productivity in the office.

It is also apparent from this table that air quality, thermal comfort and lighting negatively affected the productivity of the Howell Building occupants. However, both the acoustics and layout had an insignificant effect. This also applies to the researchers accommodated in Marie Jahoda, where most variables had no impact, except for the indoor air quality and layout, which had a significant negative effect.

Next came the question of Responsiveness to the IEQ factors. Table 13 highlights that the overall model was statistically significant at  $r = 0.05$  since the  $F$ -value is greater than 1. Further, the proportion of variance explained by these regressors in the model is relatively high, as suggested by the  $R^2$ . Again, no serial correlation is found since the DW statistics are close to 2.

A closer inspection of the table also shows that in the Michael Sterling building, with the dependent variable of responsiveness, all the variables considered positively affect the users' productivity. The results in the case of Eastern Gateway and the Stem Centre show evidence of a significant positive impact from all the variables except the acoustic comfort, which has a significant negative effect. A possible reason for this is that the building was new and could be improved to increase the users' productivity. Acoustic comfort was the most negative effect on their productivity.

By contrast, all the variables hurt the productivity of researchers at both the Howell and Marie Jahoda buildings. Specifically, the occupants emphasised that all the IEQ factors negatively affected their comfort level, which directly affected their health, well-being, and productivity.

The third set of analyses examined the impact of the role of IEQ factors on the researchers' productivity when the building depth was the dependent variable. As presented in Table 14, the

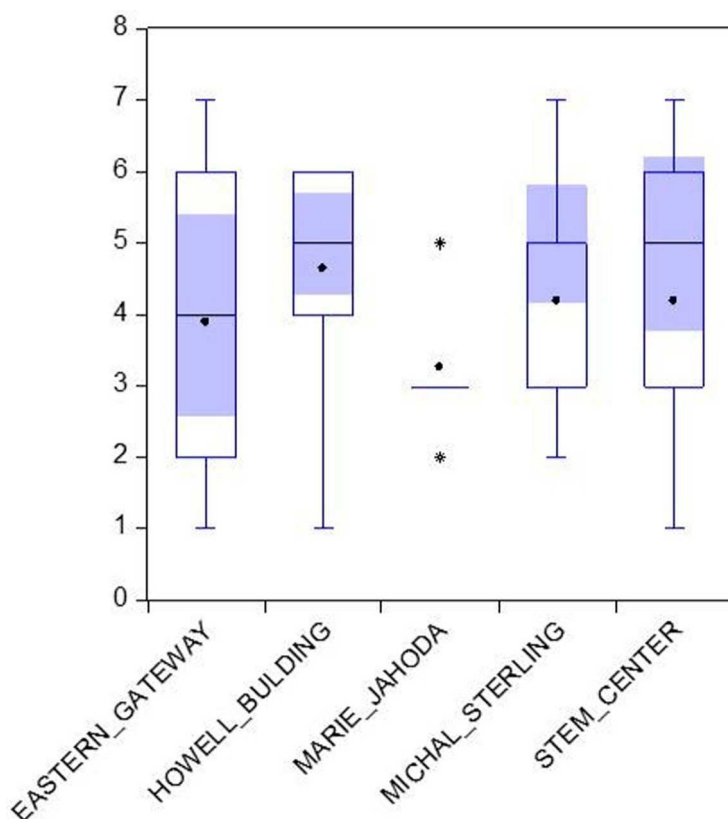


Figure 15. Box plot of respondents' spaces satisfaction.

estimated model was statistically significant for each building. Moreover, the proportion of variance explained by these regressors in the model is quite acceptable, as suggested by  $R^2$ . Furthermore, the model is well specified since no evidence of serial correlation is found (DW is close to 2).

Table 11. Layout.

	Layout and functionality	Spaces	Health & wellbeing
<i>Michal Sterling</i>			
Mean	5.27	5.2	4.07
Std. Deviation	1.98	1.74	1.39
Variance	3.92	3.03	1.92
<i>Eastern Gateway</i>			
Mean	3.8	4.1	3.75
Std. Deviation	1.79	1.97	1.92
Variance	3.22	3.88	3.67
<i>Marie Jahoda</i>			
Mean	2.18	2.36	2.45
Std. Deviation	0.87	0.92	0.93
Variance	0.76	0.86	0.87
<i>Howell</i>			
Mean	3.2	3.65	3.35
Std. Deviation	1.67	1.42	1.69
Variance	2.8	2.03	2.87
<i>Stem Centre</i>			
Mean	4.93	4.2	4
Std. Deviation	2.15	2.14	2
Variance	4.64	4.6	4

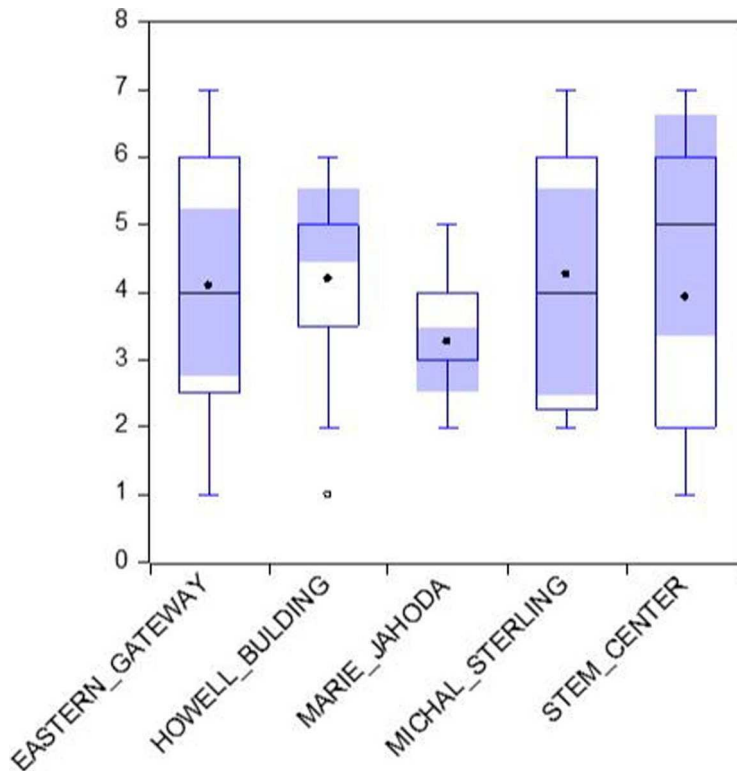


Figure 14. Box plot of respondents' layout and functionality satisfaction.

Table 12. The influence of the IEQ on personal control.

		MS	EGW	MJ	H	SC
Panel A; Estimation results 'Personal Control'						
Thermal	Coefficient	-0.258	0.239	0.473	-0.097	0.493
	SE	-0.063	-0.125	-0.394	-0.044	-0.279
	t-value	4.095	-1.912	-1.201	2.205	-1.767
	P-value	0.000	0.059645	0.233	0.030	0.081
Air Quality	Coefficient	0.238	0.197	-0.818	-0.395	0.356
	SE	-0.108	-0.043	-0.474	-0.123	-0.112
	t-value	-2.204	-4.581	1.726	3.211	-3.179
	P-value	0.031	0.000	0.088	0.002	0.002
Acoustic	Coefficient	0.109	0.018	1.428	-0.248	0.54
	SE	-0.036	-0.009	-1.019	-0.265	-0.283
	t-value	-3.028	-2.000	-1.401	0.936	-1.908
	P-value	0.003	0.049	0.165	0.352	0.060
Lighting	Coefficient	0.394	0.229	0.467	-0.189	0.174
	SE	-0.103	-0.112	-0.398	-0.042	-0.027
	t-value	-3.825	-2.045	-1.173	4.500	-6.444
	P-value	0.000	0.044	0.244	0.000	0.000
Layout	Coefficient	0.621	0.453	-0.457	0.373	0.065
	SE	-0.379	-0.129	-0.167	-0.248	-0.002
	t-value	-1.639	-3.512	2.737	-1.504	-32.500
	P-value	0.105	0.001	0.008	0.137	0.000
Panel B, Goodness of fit						
R-Square		0.325	0.445	0.529	0.475	0.682
F-test		4.867	2.243	1.124	1.678	3.852
DW		1.614	1.961	2.061	1.734	1.778

\*, \*\*, \*\*\* indicate that F-test is significant at 1%, 5%, and 10% respectively.  
SE: refer to Standard Error which is in parentheses.

Table 13. The influence of IEQ on responsiveness.

		MS	EGW	MJ	H	SC
<i>Panel A: Estimation results 'Personal Control'</i>						
Thermal	Coefficient	-0.258	0.239	0.473	-0.097	0.493
	SE	-0.063	-0.125	-0.394	-0.044	-0.279
	t-value	4.095	-1.912	-1.201	2.205	-1.767
	P-value	0.000	0.059645	0.233	0.030	0.081
Air Quality	Coefficient	0.238	0.197	-0.818	-0.395	0.356
	SE	-0.108	-0.043	-0.474	-0.123	-0.112
	t-value	-2.204	-4.581	1.726	3.211	-3.179
	P-value	0.031	0.000	0.088	0.002	0.002
Acoustic	Coefficient	0.109	0.018	1.428	-0.248	0.54
	SE	-0.036	-0.009	-1.019	-0.265	-0.283
	t-value	-3.028	-2.000	-1.401	0.936	-1.908
	P-value	0.003	0.049	0.165	0.352	0.060
Lighting	Coefficient	0.394	0.229	0.467	-0.189	0.174
	SE	-0.103	-0.112	-0.398	-0.042	-0.027
	t-value	-3.825	-2.045	-1.173	4.500	-6.444
	P-value	0.000	0.044	0.244	0.000	0.000
Layout	Coefficient	0.621	0.453	-0.457	0.373	0.065
	SE	-0.379	-0.129	-0.167	-0.248	-0.002
	t-value	-1.639	-3.512	2.737	-1.504	-32.500
	P-value	0.105	0.001	0.008	0.137	0.000
<i>Panel B: Goodness of fit</i>						
R-Square		0.325	0.445	0.529	0.475	0.682
F-test		4.867	2.243	1.124	1.678	3.852
DW		1.614	1.961	2.061	1.734	1.778

\*, \*\*, \*\*\* indicate that F-test is significant at 1%, 5%, and 10% respectively.

SE: refer to Standard Error which is in parentheses.

Regarding the estimated coefficient, the air quality and thermal comfort significantly imp the users' productivity of such relatively new buildings as Eastern Gateway and the Stem Centre, but the other factors have no effect. However, the case of the Michael Sterling building indicates a significant positive impact on the air quality variable and an insignificant one for the other variables. The reason is that potential of this office to affect the level of natural ventilation, the air conditioning and the window arrangements negatively affects workers' health, well-being and productivity.

For both Howell and the Marie Jahoda buildings, the researchers were sure that the office's capacity to affect the level of natural ventilation, the air conditioning, and the window arrangements is negatively affected by air quality and thermal comfort factors.

The subsequent regression analysis involves the impact of IEQ on productivity using workgroups as the dependent variable. As shown in Table 15, the variables in question are jointly significant at  $\alpha = 0.05$ . Further, these estimators explain a reasonable amount of the variation in the dependent variable, as indicated by  $R^2$ . Furthermore, no serial correlation is found since the DW statistics are close to 2.

The model indicates the significant positive impact of almost all the variables on productivity in the case of the Michael Sterling, Stem Centre and Eastern Gateway buildings except for thermal comfort in the Stem Centre, which has an insignificant impact. That is to say; the researchers agree that their overall satisfaction had positively affected their productivity in their office environment. But, in line with the descriptive analysis, it was clear that all the researchers were dissatisfied with their office environment in the Howell and the Marie Jahoda buildings.

## 6. The role of biophilic design patterns in improving conditions in the indoor workplace

Correlation analysis was used to explore the possibility of improving the indoor workplace environment by using the patterns of the Biophilic Design; the survey questions included questions about adding natural features, presence of green elements and plants, daylight, controlling Indoor air quality and thermal comfort, noise, size and orientation of the windows, view, the existence of water and many more.

The correlation analysis involved measuring the relationship or correlation between two sets of variables: the IEQ factors and the Biophilic Design applications in the workplace, in order to ascertain whether they



Table 14. The influence of IEQ on the Building Depth.

		MS	EGW	MJ	H	SC
Panel A; Estimation results 'Responsiveness'						
Thermal	Coefficient	0.431	0.221	−0.358	−0.848	−0.237
	SE	−0.226	−0.135	−0.207	−0.311	−0.121
	t-value	−1.907	−1.637	1.729	2.727	1.959
	P-value	0.060	0.106	0.088	0.008	0.054
Air quality	Coefficient	0.358	0.293	−0.134	−0.372	0.362
	SE	−0.181	−0.134	−0.073	−0.227	−0.169
	t-value	−1.978	−2.187	1.836	1.639	−2.142
	P-value	0.052	0.032	0.070	0.105	0.035
Acoustic	Coefficient	0.413	−0.417	−0.615	−0.651	0.289
	SE	−0.209	−0.155	−0.286	−0.338	−0.153
	t-value	−1.976	2.690	2.150	1.926	−1.889
	P-value	0.052	0.009	0.035	0.058	0.063
Lighting	Coefficient	0.265	0.373	−0.224	−0.165	0.672
	SE	−0.084	−0.181	−0.105	−0.068	−0.123
	t-value	−3.155	−2.061	2.133	2.426	−5.463
	P-value	0.002	0.043	0.036	0.018	0.000
Layout	Coefficient	0.842	0.431	−0.171	−0.096	0.474
	SE	−0.325	−0.137	−0.046	−0.016	−0.121
	t-value	−2.591	−3.146	3.717	6.000	−3.917
	P-value	0.011	0.002	0.000	0.000	0.000
Panel B, Goodness of fit						
R-Square		0.638	0.807	0.565	0.405	0.896
F-test		3.173	11.714	2.301	1.905	15.447
DW		2.185	2.447	1.485	1.511	2.267

\*, \*\*, \*\*\* indicate that the test is significant at 1%, 5%, and 10% respectively.

Table 15. The influence of IEQ on the Workgroups.

		Panel A; Estimation results 'Building Depth'				
		MS	EGW	MJ	H	SC
Thermal	Coefficient	0.278	0.405	−0.294	−0.142	−0.304
	SE	0.271	0.317	0.345	0.023	0.143
	t-value	1.026	1.278	−0.852	−6.174	−2.126
	P-value	0.308	0.205	0.397	0.000	0.037
Air quality	Coefficient	0.592	0.171	−0.494	−0.361	−0.273
	SE	0.237	0.089	0.215	0.179	0.129
	t-value	2.498	1.921	−2.298	−2.017	−2.116
	P-value	0.015	0.058	0.024	0.047	0.038
Acoustic	Coefficient	−0.418	−0.007	0.734	0.054	0.303
	SE	0.372	0.221	0.892	0.319	0.298
	t-value	−1.124	−0.032	0.823	0.169	1.017
	P-value	0.265	0.975	0.413	0.866	0.312
Lighting	Coefficient	−0.846	0.119	0.516	0.153	0.193
	SE	0.641	0.057	0.411	0.205	0.239
	t-value	−1.320	2.088	1.255	0.746	0.808
	P-value	0.191	0.040	0.213	0.458	0.422
Layout	Coefficient	0.463	0.246	−0.673	0.356	0.214
	SE	0.390	0.195	0.632	0.297	0.236
	t-value	1.187	1.262	−1.065	1.199	0.907
	P-value	0.239	0.211	0.290	0.234	0.367
Panel B, Goodness of fit						
R-Square		0.581	0.617	0.519	0.319	0.42
F-test		2.532	4.502	1.079	1.311	1.302
DW		1.913	2.376	1.358	1.429	1.576

\*, \*\*, \*\*\* indicate that F-test is significant at 1%, 5%, and 10% respectively.

were positively or negatively related, or not associated in any way whatsoever. Put differently, the researchers were asked seven categories of questions regarding the potential of applying Biophilic Design to improve their workplace, the possibility of using Biophilic applications to solve the problems with the five main IEQ factors, as well as three additional categories. These categories are the aesthetic values that Biophilic Design

Table 16. Correlations analysis.

	Michael Sterling	Eastern Gateway	Marie Jahoda	Howell Building	Stem Centre
Thermal Comfort	0.225*	-0.260	0.244	-0.185	0.431*
Indoor Air Quality	-0.038	0.523	0.352**	0.602*	-0.384
Acoustic Environment	0.101	0.394**	0.172	0.193	0.194
Lighting Environment	0.335	-0.478	0.214*	0.516**	0.577
Layout	0.227	-0.372	0.207*	0.556	0.398
aesthetic	0.213*	0.207*	0.165	0.197	0.189*

\* Correlation is significant at the 0.05 level (2-tailed).

\*\* Correlation is significant at the 0.01 level (2-tailed).

adds to a building, the potential to apply Biophilic Design to balance the adverse IEQ factors in the office environment, and the effect on the researchers' health, well-being and productivity of adding Biophilic applications.

Table 16 shows the correlation analysis which expresses the degree of the association or the relationship. In the Michael Sterling building and the Stem Centre, there is clear evidence that participants highlighted the need to improve the aesthetic values and thermal comfort, one of the variables positively correlated with the researchers' wellness.

For those in the Eastern Gateway buildings, it is clear that the highest correlation was for other Biophilic applications to balance the IEQ levels. Next came the aesthetic additions of Biophilic design aspects that were mostly connected with their wellness. Moreover, the researchers were sure that the acoustics environment of their office needed improvement.

The case with the older buildings (the Marie Jahoda and Howell Buildings) was found to be somewhat different. The researchers in the former building paid more attention to the quality of the air indoors, followed by the Biophilic applications of the lighting environment that mainly were connected with their wellness. Moreover, the layout was one of the essential variables that would enhance their wellness if it was improved using Biophilic Design patterns. Similarly, for the Howell building, the correlation between indoor air quality and wellness was the highest, followed by Biophilic patterns applied to the lighting environment. The need to add aesthetic plants and greenery as well as HVAC systems was another of the variables that are positively correlated with the researchers' wellness.

## 7. Conclusion

This paper surveyed the relationship between the indoor environmental quality (IEQ) – factors and sub-factors – and the occupants' health, well-being and productivity, based on the Flourish Wheel in the open-plan research offices at Brunel University London.

The most prominent finding to emerge from this study is that the qualities of the five key IEQ aspects, namely, thermal comfort, indoor air quality, lighting environment, acoustic environment and the office spatial layout, have significantly positive correlations with the occupants' wellness.

The second significant finding was that of the five critical aspects of IEQ, the quality of the thermal environment and the indoor air quality have the most important influence on productivity in the older buildings due to the lack of fresh air as well as the precarious balance in the levels of temperature and humidity. However, the descriptive analysis shows that the new buildings' occupants were satisfied with thermal comfort, indoor air quality, and lighting, though they had some reservations regarding the office layout and acoustic comfort. Such matters are always possible and even expected in open-plan offices.

One of the more significant findings to emerge from this study is from the regression analysis, which shows that the level of comfort that individuals experience within their workplace environments was satisfactory in the Eastern Gateway building, the Stem Centre and the Michael Sterling building. It had a direct positive effect on the productivity there.

Overall, this study strengthens the idea that the IEQ Issues appeared in the 5 research rooms can be improved using different methods including the Biophilia. As a first solution for the rooms generally, Applying HVAC (heating, ventilation and air conditioning) delivery combined with natural plant strategy is going to impact positively on the occupants' satisfaction.

As for the thermal comfort issues this can be enhanced generally by applying plants that are responsible for converting carbon dioxide to oxygen specifically at night, in addition to some kind of Green walls that absorb heat, humidity & moisture imbalances. In Marie Jahoda building, and because of the small windows,

applying window planters, and use the kind of plants that give an excellent ability to filter VOC's from the air, can help with the Indoor air quality issues.

Lastly, lighting problems can be avoided by using blinds that cut out to project shadows and light, also to control the sun direction to the inside as in both stem centre and the eastern gateway. Using Partitions, or moving some existing furniture and plants can be part of solving acoustics and layout problems by creating private spaces for retreating & restoring energy.

This study is part of a small body of literature; therefore, the ideas proposed in this study, as well as the findings, could be valuable for both academic and design practitioners. Further work needs to be done to establish a co-design toolkit that helps designers and architects to improving open-plan workspaces using the patterns of Biophilic Design by evaluating the main IEQ factors and making aesthetic additions where possible.

## Notes

1. *Open-plan offices* refer to the offices designed and built for the daily research work (ISO, 2009) of groups of researchers (e.g. postgraduate students, post-doctoral researchers and research staff).
2. Wilson first described the concept of Biophilia as 'the innately emotional affiliation of human beings to other living organisms. Innate means hereditary and hence part of ultimate human nature.' (Wilson 2006).

## Disclosure statement

No potential conflict of interest was reported by the author(s).

## Notes on contributors

*Younna Al-Dmour* is a Doctoral Researcher in Brunel Design School, Brunel University London, UK. Prior to joining the PhD journey, she studied the bachelor's and master's degrees in architecture engineering at the University of Jordan. She is now an hourly paid lecturer at Brunel University London while she is doing her PhD in Design Engineering. Her main research interests are diverse, but her main research focuses on the workplaces Indoor Environmental Quality Design. Currently, she is in her final year of her study; Immediately after her graduation, she is going to work at Mu'tah University in Jordan".

*Huthaifa Alqaralleh*, PhD, is an Associate Professor of Financial Economics and head of the Department of Economics, Business and Finance, school of Business, Mutah University, Jordan. His research interests emphasise multidisciplinary aspects, where econometric techniques and methodologies from economics, engineering, and psychology are implemented in studying the complexity of economic and financial systems on a macro level, focused on areas such as international economics and financial markets, energy, and corporate finance. He has attended various international seminars and conferences and has publications in well-renowned journals such as Resources Policy, Economic Modelling, Financial Innovation, Real estate Economics and Finance, Economic Studies, Journal of Applied Economics, Journal of Economic Asymmetry, Energy & Environment International Journal of Energy Sector Management, Cogent Economics and Finance.

*Dr Vanja Garaj* is the Director of Research and Reader in Design at the Brunel Design School, Brunel University London, where he also leads the Design Futures module for the MSc Integrated Product Design, MSc Sustainability, Entrepreneurship and Design, MA Design Strategy and Innovation and MA Design and Branding Strategy programmes within the school. Previously, he was Head of Design at Brunel. Dr Garaj's research spans the areas of Human-Computer Interaction (HCI), User Experience (UX) and Inclusive Design. He specialises in the user requirements capture and analysis, systems and UX design and user testing and evaluation applied to the development of novel products, services and experiences. Dr Garaj has been the Principal Investigator and Co-Investigator on a number of research and innovation projects funded by the Engineering and Physical Sciences Research Council (EPSRC), Arts and Humanities Research Council (AHRC), Economic and Social Research Council (ESRC), Science and Technology Facilities Council (STFC), Innovate UK, Research England and European Regional Development Fund (ERDF)/Greater London Authority (GLA).

*Professor Emeritus Derek Clements-Croome* at Reading University has worked in the building design and contracting industry before entering university life. He has founded and directed courses including a BSc in building environmental engineering at Loughborough University in 1970 and an interdisciplinary Government funded MSc in Intelligent Buildings at Reading University in 1996. He has also worked in architecture and building engineering at the University of Bath (1978-1988) with Sir Ted Happold. He founded the CIBSE Intelligent Buildings Group in 2006 and co-founded the CIBSE Natural Ventilation Group in 1992 and was commended by the CIB for linking the CIBSE IBG with his work as Coordinator for the W098 Commission on Intelligent and Responsive Buildings. He was Vice President for CIBSE in 2007-9 and holds their Bronze and Silver Medals. Derek has been a commissioner on air quality and also biodiversity for some Boroughs in London. He was a member of the UK Green Building Council team who wrote the Report Health and Wellbeing in Homes — July 2016 and the World Green Council Report on Health and Wellbeing in Offices 2014. He contributed to the BCO Report 2018 on Wellness Matters: the Guide to Specification 2019 and reports on Ventilation for COVID 19 in 2021 and also The Use of Wearables in the Office in 2021. He edits the INBI Journal and has edited and written chapters in the 3rd Edition of Creating the Productive Workplace Routledge 2018. His book Designing Buildings for People: Sustainable Liveable Architecture was published by Crowood Press in late 2020 and includes his work on assessing the impact on the environment on people's health and wellbeing including the

economic and sustainability implications. Currently working on the 3rd edition of the book *Intelligent Buildings* being published by the ICE in 2024.

## ORCID

Younna Al-Dmour  <http://orcid.org/0000-0003-4341-8506>  
Huthaifa AlQaralleh  <http://orcid.org/0000-0003-4181-1670>  
Vanja Garaj  <http://orcid.org/0000-0002-1661-597X>  
Derek Clements-Croome  <http://orcid.org/0000-0001-5116-8821>

## References

- Al-Dmour, Y., V. Garaj, and D. Clements-Croome. 2020. "The Flourishing of Biophilic Workplaces: 'Second Home' Offices as a Case Study." *Intelligent Buildings International*, 1–14. doi:10.1080/17508975.2020.1807895.
- Al Horr, Y., M. Arif, A. Kaushik, A. Mazroei, E. Elsarrag, and S. Mishra. 2017. "Occupant Productivity and Indoor Environment Quality: A Case of GSAS." *International Journal of Sustainable Built Environment* 6 (2): 476–490. doi:10.1016/j.ijbsbe.2017.11.001.
- Alrubaih, M. S., M. F. M. Zain, M. A. Alghoul, N. L. N. Ibrahim, M. A. Shameri, and O. Elayeb. 2013. "Research and Development on Aspects of Daylighting Fundamentals." *Renewable and Sustainable Energy Reviews* 21: 494–505. doi:10.1016/j.rser.2012.12.057.
- Banbury, S. P., and D. C. Berry. 2005. "Office Noise and Employee Concentration: Identifying Causes of Disruption and Potential Improvements." *Ergonomics* 48 (1): 25–37. doi:10.1080/00140130412331311390.
- Beute, F., and Y. A. W. de Kort. 2018. "The Natural Context of Wellbeing: Ecological Momentary Assessment of the Influence of Nature and Daylight on Affect and Stress for Individuals with Depression Levels Varying from None to Clinical." *Health & Place* 49: 7–18. doi:10.1016/j.healthplace.2017.11.005.
- Bluyssen, P. M. 2019. "The Need for Understanding the Indoor Environmental Factors and its Effects on Occupants Through an Integrated Analysis." *IOP Conference Series: Materials Science and Engineering* 609 (2): 022001. doi:10.1088/1757-899X/609/2/022001.
- Bordass, B., K. Bromley, and A. Leaman. 1993, February. "User and Occupant Control in Office Buildings." In *International Conference on Building Design, Technology and Occupant Well-Being in Temperate Climates, Brussels, Belgium* (pp. 12–5). <http://seedengr.com/documents/UserandOccupantControls.pdf>.
- Bordass, B., R. Cohen, M. Standeven, and A. Leaman. 2001a. "We are Assessing Building Performance in Use 2: Technical Performance of the Probe Buildings." *Building Research & Information* 29 (2): 103–113. doi:10.1080/09613210010008027.
- Bordass, B., A. Leaman, and P. Ruyssevelt. 2001b. "Assessing Building Performance in Use 5: Conclusions and Implications." *Building Research & Information* 29 (2): 144–157. doi:10.1080/09613210010008054.
- Candido, C., L. Thomas, S. Haddad, F. Zhang, M. Mackey, and W. Ye. 2019. "Designing Activity-Based Workspaces: Satisfaction, Productivity and Physical Activity." *Building Research and Information* 47 (3): 275–289.
- Chang, C.-Y., and P.-K. Chen. 2005. "Human Response to Window Views and Indoor Plants in the Workplace." *Hortscience*.
- Clements-Croome, D. J. 2016. "Intelligent Liveable Buildings: Health and Well-Being Perspectives." Lecture at Bath University March 4th in School of Architecture and Civil Engineering. [www.derekcroome.com](http://www.derekcroome.com).
- Clements-Croome, D. 2018. "Chapter 1 Effects of the Built Environment on Health and Well-Being." In *Creating the Productive Workplace: Places to Work Creatively*, edited by D. Clements-Croome, 3–40. London: Routledge.
- Clements-Croome, D. 2021a. *Designing Buildings for People: Sustainable Liveable Architecture*. Marlborough: Crowood Press.
- Clements-Croome, D. 2021b. "Flourish Theory: A Model for Multisensory Human-Centric Design." In *A Handbook of Theories on Designing Alignment Between People and the Office Environment*, 157–168. Oxfordshire: Routledge.
- Clements-Croome, D., C. Bowman, and Y. Al-Dmour. 2021. "Using the Flourish Model for Environmental Design." In *Das Menschliche Büro-The Human (e) Office: Hilfe zur Selbsthilfe für eine gesunde Arbeitswelt* [Helping People to a Healthy Working Environment], 355–375. Wiesbaden: Springer Vieweg.
- Clements-Croome, D., B. Turner, and K. Pallaris. 2019. "Flourishing Workplaces: A Multisensory Approach To Design and POE." *Intelligent Buildings International* 11: 131–144.
- Collinge, W. O., A. E. Landis, A. K. Jones, L. A. Schaefer, and M. M. Bilec. 2014. "Productivity Metrics in Dynamic LCA for Whole Buildings: Using a Post-occupancy Evaluation of Energy and Indoor Environmental Quality Tradeoffs." *Building and Environment* 82: 339–348.
- Cooper, T. D. 2011. "Psychology, Religion, and Critical Hermeneutics: Don Browning as 'Horizon Analyst'." *Zygon®* 46 (3): 686–697. doi:10.1111/j.1467-9744.2011.01206.x.
- Council, W. G. B. 2014. *Health, Wellbeing & Productivity in Offices*. World Green Building Council, United States.
- Di Blasio, S., L. Shtrepi, G. E. Puglisi, A. Astolfi. 2019. "A Cross-Sectional Survey on the Impact of Irrelevant Speech Noise on Annoyance, Mental Health and Well-Being, Performance and Occupants' Behavior in Shared and Open-Plan Offices." *International Journal of Environmental Research and Public Health* 16 (2): 280.
- Djongyang, N., R. Tchinda, and D. Njomo. 2010. "Thermal Comfort: A Review Paper." *Renewable and Sustainable Energy Reviews* 14 (9): 2626–2640. doi:10.1016/j.rser.2010.07.040.
- Fanger, P. 1982. "Thermal Comfort-Analysis and Applications." *Environmental Engineering* (pp. 128–133). <https://www.cabdirect.org/cabdirect/abstract/19722700268>.
- Fisk, W. J., D. Black, and G. Brunner. 2012. "Changing Ventilation Rates in U.S. Offices: Implications for Health, Work Performance, Energy, and Associated Economics." *Building and Environment* 47: 368–372. doi:10.1016/j.buildenv.2011.07.001.

- Fisk, W. J., D. Black, and G. Brunner. 2012. "Changing Ventilation Rates In U.S. Offices: Implications For Health, Work Performance, Energy, and Associated Economics." *Building and Environment* 47: 368–372. doi:10.1016/j.buildenv.2011.07.001.
- Gray, T., and C. Birrell. 2014. "Are Biophilic-Designed Site Office Buildings Linked to Health Benefits and High Performing Occupants?." *International Journal of Environmental Research and Public Health* 11 (12): 12204–12222.
- Grinde, B., and G. G. Patil. 2009. "Biophilia: Does Visual Contact With Nature Impact on Health and Well-Being?." *International Journal of Environmental Research and Public Health* 6 (9): 2332–2343.
- Haynes, Barry P. 2008. "The Impact of Office Layout on Productivity." *Journal of Facilities Management* 6 (3): 189–201. doi:10.1108/14725960810885961.
- Haynes, B. P. 2008. "The Impact of Office Layout on Productivity." *Journal of Facilities Management* 6 (3): 189–201. doi:10.1108/14725960810885961.
- Haynes, B., L. Suckley, and N. Nunnington. 2017. "Workplace Productivity and Office Type: An Evaluation of Office Occupier Differences Based on Age and Gender." *Journal of Corporate Real Estate* 19 (2): 111–138. doi:10.1108/JCRE-11-2016-0037.
- Heerwagen, J. H., and J. Heerwagen. 2003. *Bio-Inspired Design: What Can We Learn from Nature*. biomimicry.typepad.com. Unpublished manuscript.
- Hopkinson, D. A., and H. Harris. 1966. "Rare Phosphoglucosyltransferase Phenotypes." *Annals of Human Genetics* 30 (2): 167–181.
- Jahncke, H., and N. Halin. 2012. "Performance, Fatigue and Stress in Open-Plan Offices: The Effects of Noise and Restoration on Hearing Impaired and Normal Hearing Individuals." *Noise and Health* 14 (60): 260. doi:10.4103/1463-1741.102966.
- Kaplan, R., and S. Kaplan. 1989. *The Experience of Nature A Psychological Perspective*. Cambridge: Cambridge University Press.
- Kaushik, A., M. Arif, P. Tumula, and O. J. Ebohon. 2020. "Effect of Thermal Comfort on Occupant Productivity in Office Buildings: Response Surface Analysis." *Building and Environment* 180: 107021. doi:10.1016/j.buildenv.2020.107021.
- Kellert, S. R. 2012. *Building for Life: Designing and Understanding the Human-Nature Connection*. Washington, DC: Island Press.
- Kellert, S. R., J. Heerwagen, and M. Mador. 2008. *Biophilic Design: The Theory, Science and Practice of Bringing Buildings to Life*. John Wiley and Sons.
- Kellert, S. R., J. Heerwagen, and M. Mador. 2011. *Biophilic Design: The Theory, Science and Practice of Bringing Buildings to Life*. New York: John Wiley & Sons.
- Kellert, S., and E. Wilson. 1993. *The Biophilia Hypothesis*. Island Press.
- Laing, A., F. Duffy, D. Jaunzens, and S. Willis. 1998. *New Environments for Working: the Redesign of Offices and the Environmental Systems for New Ways of Working*. London: E&FN Spon.
- Lan, L., P. Wargocki, and Z. Lian. 2011. "Quantitative Measurement of Productivity Loss Due to Thermal Discomfort." *Energy and Buildings* 43 (5): 1057–1062. doi:10.1016/j.enbuild.2010.09.001.
- Langer, S., O. Ramalho, M. Derbez, J. Ribéron, S. Kirchner, and C. Mandin. 2016. "Indoor Environmental Quality in French Dwellings and Building Characteristics." *Atmospheric Environment* 128: 82–91.
- Leaman, A., and Bill B. 1999. "Productivity in Buildings: the 'Killer' Variables." *Building Research & Information* 27 (1): 4–19. doi:10.1080/096132199369615.
- Leaman, A., and B. Bordass. 1999. "Productivity in Buildings: the 'Killer' Variables." *Building Research & Information* 27 (1): 4–19. doi:10.1080/096132199369615.
- Lee, Y. S. 2010. "Office Layout Affecting Privacy, Interaction, and Acoustic Quality in LEED-Certified Buildings." *Building and Environment* 45 (7): 1594–1600. doi:10.1016/j.buildenv.2010.01.007.
- Li, D. H. W. 2010. "A Review of Daylight Illuminance Determinations and Energy Implications." *Applied Energy* 87 (7): 2109–2118. doi:10.1016/j.apenergy.2010.03.004.
- Li, D. H. W., and J. C. Lam. 2001. "Evaluation of Lighting Performance in Office Buildings with Daylighting Controls'." *Energy and Buildings* 33 (8): 793–803. doi:10.1016/S0378-7788(01)00067-6.
- Lohr, V. I., and C. H. Pearson-Mims. 1996. "Particulate Matter Accumulation on Horizontal Surfaces in Interiors: Influence of Foliage Plants." *Atmospheric Environment* 30 (14): 2565–2568.
- MacKerron, G., and S. Mourato. 2013. "Happiness is Greater in Natural Environments." *Global Environmental Change* 23 (5): 992–1000. doi:10.1016/j.gloenvcha.2013.03.010.
- Mansfield, K. 2018. "Architectural Lighting Design: A Research Review Over 50 Years." *Lighting Research and Technology* 50 (1): 80–97.
- Maslow, A. H. 1943. "A Theory of Human Motivation." *Psychological Review* 50 (4): 370–396. doi:10.1037/h0054346.
- Mujan, I., A. S. Anđelković, V. Munčan, M. Kljajić, and D. Ružić. 2019. "Influence of Indoor Environmental Quality on Human Health and Productivity – A Review." *Journal of Cleaner Production* 217: 646–657. doi:10.1016/j.jclepro.2019.01.307.
- Peters, T., and K. D'Penna. 2020. "Biophilic Design for Restorative University Learning Environments: A Critical Review of Literature and Design Recommendations." *Sustainability* 12 (17): 7064. doi:10.3390/su12177064.
- Poria, S., A. Gelbukh, A. Hussain, N. Howard, D. Das, and S. Bandyopadhyay. 2013. "Enhanced SenticNet with Affective Labels for Concept-Based Opinion Mining." *IEEE Intelligent Systems* 28 (2): 31–38. doi:10.1109/MIS.2013.4.
- Sanchez, J. A., T. Ikaga, and S. V. Sanchez. 2018. "Quantitative Improvement in Workplace Performance Through Biophilic Design: A Pilot Experiment Case Study." *Energy and Buildings* 177: 316–328. doi:10.1016/j.enbuild.2018.07.065.
- Shahzad, S., J. K. Calautit, K. Calautit, B. Hughes, and A. I. Aquino. 2018. "Advanced Personal Comfort System (APCS) for the Workplace: A Review and Case Study." *Energy and Buildings* 173: 689–709.
- Silva, M. F., S. Maas, H. A. De Souza, and A. P. Gomes. 2017. "Post-Occupancy Evaluation of Residential Buildings in Luxembourg with Centralized and Decentralized Ventilation Systems, Focusing On Indoor Air Quality (IAQ). Assessment by Questionnaires and Physical Measurements." *Energy and Buildings* 148: 119–127.
- Soga, M., T. Yamanoi, K. Tsuchiya, T. F. Koyanagi, and T. Kanai. 2018. "What are the Drivers of and Barriers to Children's Direct Experiences of Nature?" *Landscape and Urban Planning* 180: 114–120. doi:10.1016/j.landurbplan.2018.08.015.

- Tanabe, S. I., N. Nishihara, and M. Haneda. 2007. "Indoor Temperature, Productivity, and Fatigue in Office Tasks." *HVAC&R Research* 13 (4): 623–633. doi:10.1080/10789669.2007.10390975.
- Tsushima, S., S. I. Tanabe, and K. Utsumi. 2015. "Workers' Awareness and Indoor Environmental Quality in Electricity-Saving Offices." *Building and Environment* 88: 10–19. doi:10.1016/j.buildenv.2014.09.022.
- Vernon, H. M., and T. Bedford. 1930. "A Study of Heating and Ventilation in Schools." 58.
- Walford, G. 1983. "Postgraduate Education and the Student's Contribution to Research." *British Journal of Sociology of Education* 4 (3): 241–254.
- Wargocki, P. 2000. "The Effects of Outdoor Air Supply Rate in an Office on Perceived Air Quality, Sick Building Syndrome (SBS) Symptoms and Productivity." *Indoor Air* 10 (4): 222–236. doi:10.1034/j.1600-0668.2000.010004222.x.
- WGBC. 2014. *Health, Wellbeing and Productivity in Offices*. Retrieved May 2, p.2016.
- Wilson, E. O. 1984. *Biophilia*. Cambridge, MA: Harvard University Press.
- Wilson, A. 2006. *Biophilia in Practice: Buildings That Connect People With Nature*. The American Institute of Architects.
- Wolkoff, P. 2018. "Indoor Air Humidity, Air Quality, and Health – An Overview." *International Journal of Hygiene and Environmental Health* 221 (3): 376–390. doi:10.1016/j.ijheh.2018.01.015.
- Wong, L. T., K. W. Mui, and P. S. Hui. 2006. "A Statistical Model for Characterizing Common Air Pollutants in Air-conditioned Offices." *Atmospheric Environment* 40 (23): 4246–4257.
- Zhang, R., C. Campanella, S. Aristizabal, A. Jamrozik, J. Zhao, P. Porter, S. Ly, and B. A. Bauer. 2020. "Impacts of Dynamic LED Lighting on the Well-Being and Experience of Office Occupants." *International Journal of Environmental Research and Public Health* 17 (19): 7217. *Gale Academic OneFile*, link.gale.com/apps/doc/A642265910/AONE?u=anon~6d1a59e5&sid=google Scholar&xid=5537fld3. Accessed 1 October 2021. doi:10.3390/ijerph17197217