

# *Ex vivo expansion of limbal stem cells is affected by substrate properties*

Article

Accepted Version

Diagrams & Illustrations

Jones, R. R., Hamley, I. ORCID: <https://orcid.org/0000-0002-4549-0926> and Connon, C. (2012) Ex vivo expansion of limbal stem cells is affected by substrate properties. *Stem Cell Research*, 8 (3). pp. 403-409. ISSN 1876-7753 doi: <https://doi.org/10.1016/j.scr.2012.01.001> Available at <https://centaur.reading.ac.uk/26207/>

It is advisable to refer to the publisher's version if you intend to cite from the work. See [Guidance on citing](#).

To link to this article DOI: <http://dx.doi.org/10.1016/j.scr.2012.01.001>

Publisher: Elsevier

All outputs in CentAUR are protected by Intellectual Property Rights law, including copyright law. Copyright and IPR is retained by the creators or other copyright holders. Terms and conditions for use of this material are defined in the [End User Agreement](#).

[www.reading.ac.uk/centaur](http://www.reading.ac.uk/centaur)

**CentAUR**

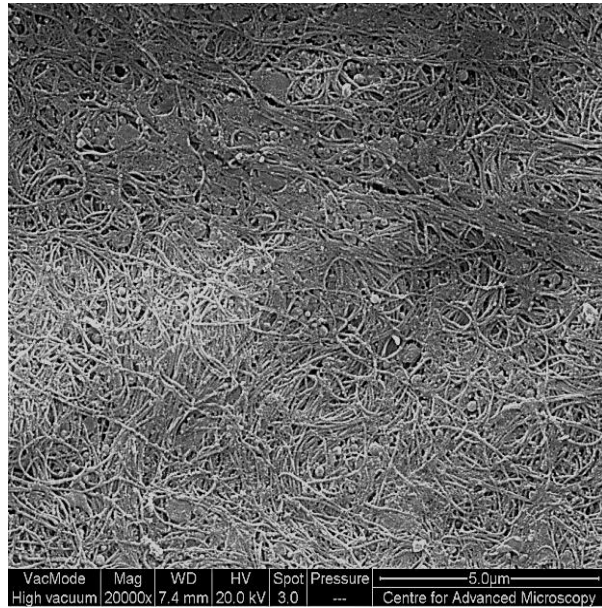
Central Archive at the University of Reading

Reading's research outputs online

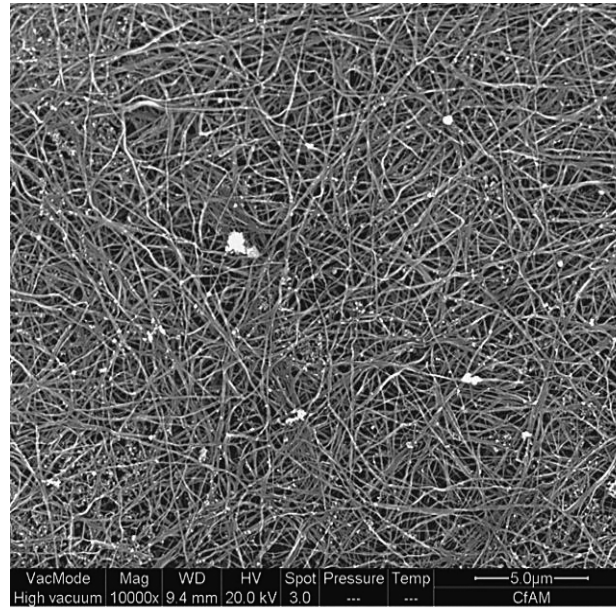


**Figure 1**

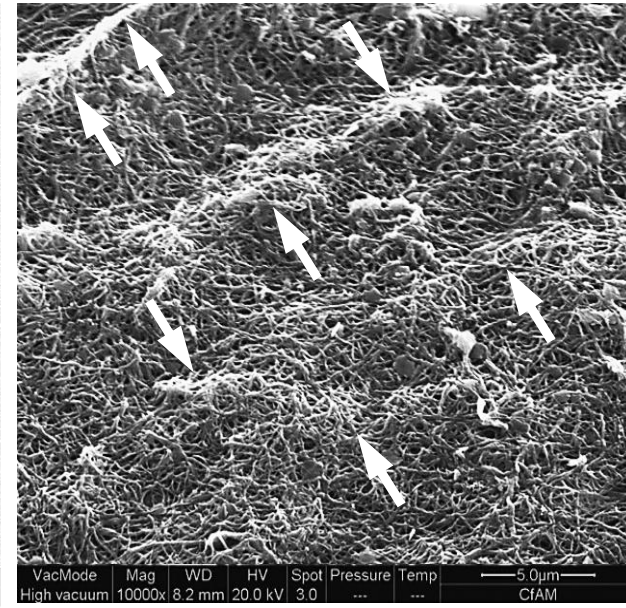
**a**



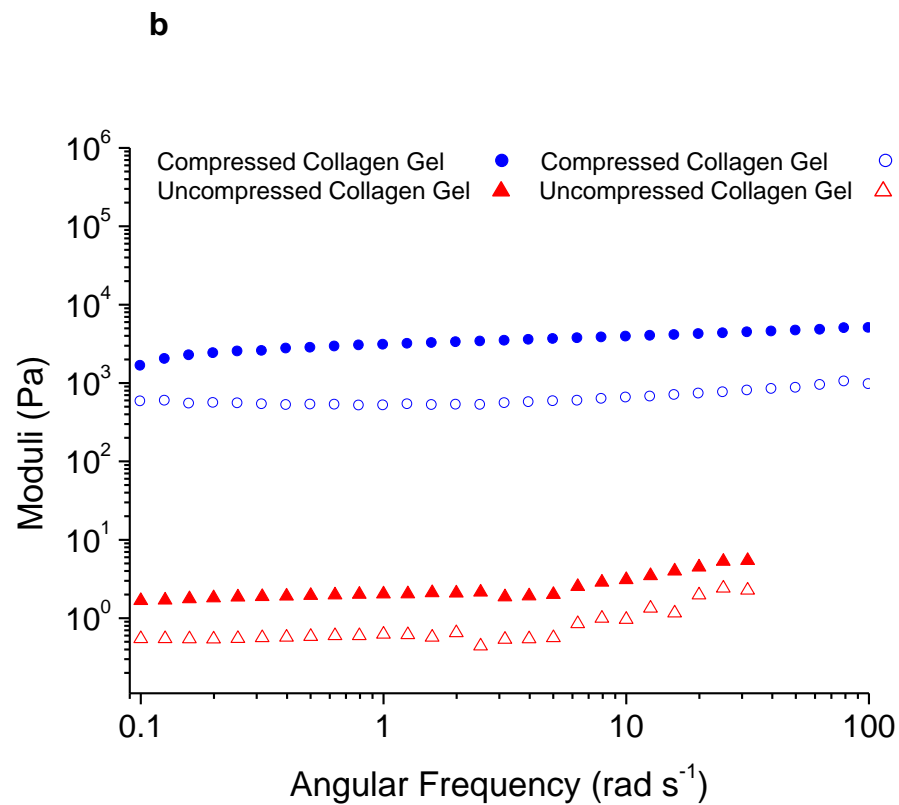
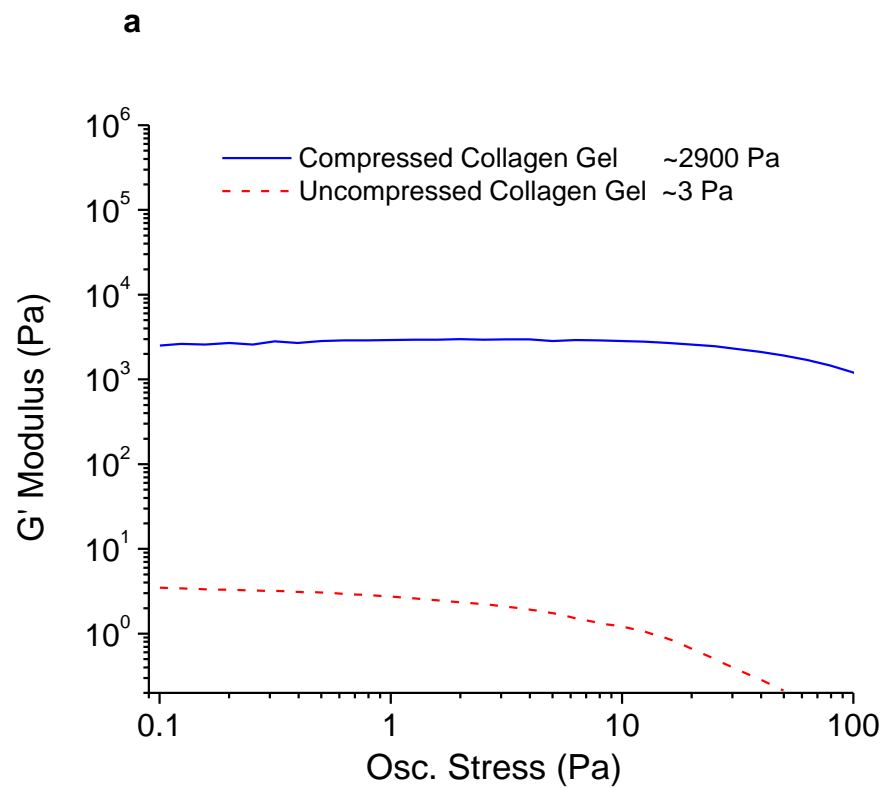
**b**

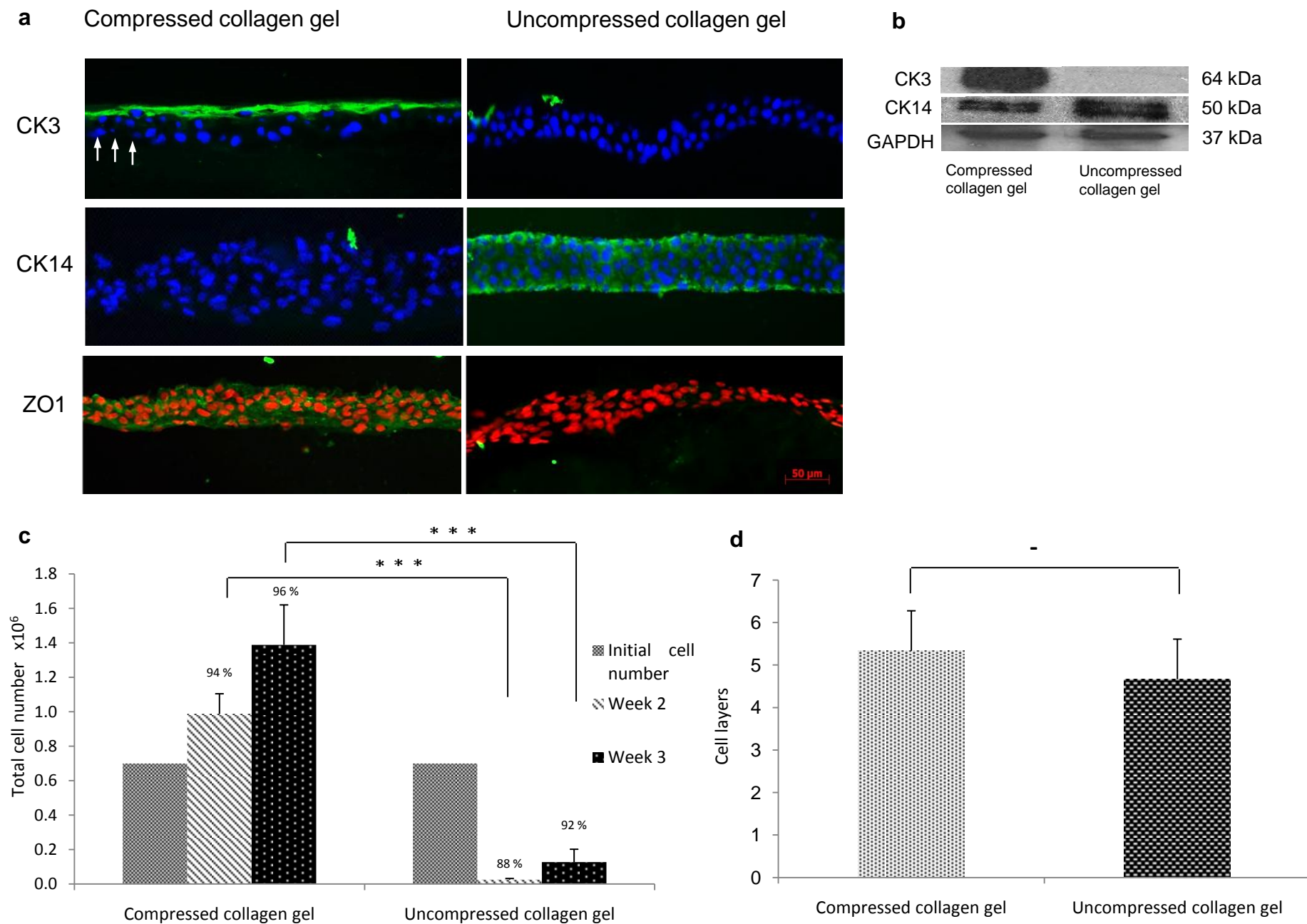


**c**



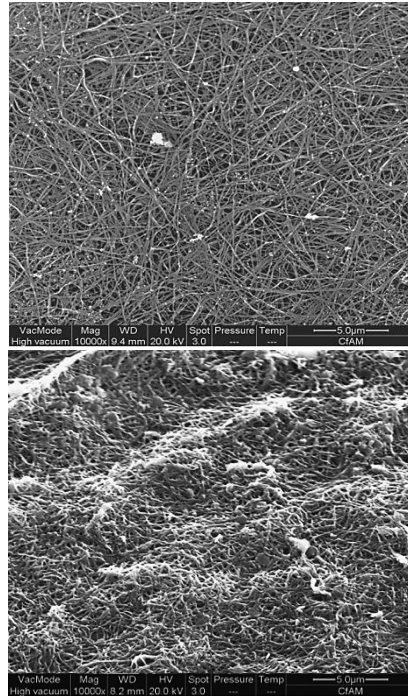
**Figure 2**



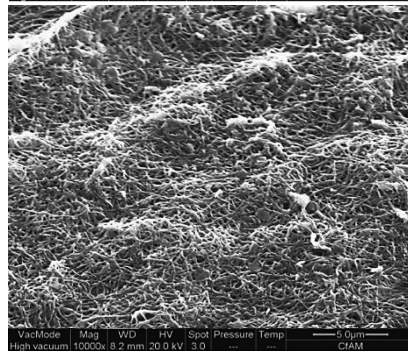
**Figure 3**

# Graphical Abstract

Compressed  
collagen gel



Uncompressed  
collagen gel



Stem cell differentiation

