

Pre-conditioning the epigenetic response to high vapor pressure deficit increases the drought tolerance of Arabidopsis thaliana

Article

Published Version

Creative Commons: Attribution-Noncommercial 3.0

Open Access

Tricker, P., Rodríguez López, C., Hadley, P., Wagstaff, C. and Wilkinson, M. (2013) Pre-conditioning the epigenetic response to high vapor pressure deficit increases the drought tolerance of Arabidopsis thaliana. Plant Signaling & Behavior, 8 (10). e25974. ISSN 1559-2316 doi: <https://doi.org/10.4161/psb.25974> Available at <https://centaur.reading.ac.uk/37440/>

It is advisable to refer to the publisher's version if you intend to cite from the work. See [Guidance on citing](#).

To link to this article DOI: <http://dx.doi.org/10.4161/psb.25974>

Publisher: Landes Bioscience

All outputs in CentAUR are protected by Intellectual Property Rights law, including copyright law. Copyright and IPR is retained by the creators or other copyright holders. Terms and conditions for use of this material are defined in the [End User Agreement](#).

www.reading.ac.uk/centaur

CentAUR

Central Archive at the University of Reading

Reading's research outputs online

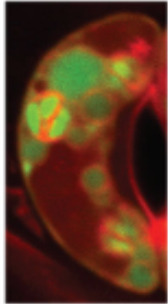
This article was downloaded by: [University of Reading]

On: 22 June 2015, At: 08:41

Publisher: Taylor & Francis

Informa Ltd Registered in England and Wales Registered Number: 1072954 Registered office: Mortimer House, 37-41 Mortimer Street, London W1T 3JH, UK

PLANT signaling & behavior



Plant Signaling & Behavior

Publication details, including instructions for authors and subscription information:

<http://www.tandfonline.com/loi/kpsb20>

Pre-conditioning the epigenetic response to high vapor pressure deficit increases the drought tolerance of *Arabidopsis thaliana*

Penny J Tricker^a, Carlos M Rodríguez López^b, P Hadley^a, C Wagstaff^c & Mike J Wilkinson^b

^a School of Biological Sciences; University of Reading; Whiteknights; Reading, UK

^b Institute of Biological, Environmental and Rural Sciences; Edward Llywd Building; University of Aberystwyth; Aberystwyth, Ceredigion, UK

^c Department of Food and Nutritional Sciences; University of Reading; Whiteknights; Reading, UK

Published online: 20 Aug 2013.

To cite this article: Penny J Tricker, Carlos M Rodríguez López, P Hadley, C Wagstaff & Mike J Wilkinson (2013) Pre-conditioning the epigenetic response to high vapor pressure deficit increases the drought tolerance of *Arabidopsis thaliana*, *Plant Signaling & Behavior*, 8:10, e25974, DOI: [10.4161/psb.25974](https://doi.org/10.4161/psb.25974)

To link to this article: <http://dx.doi.org/10.4161/psb.25974>

PLEASE SCROLL DOWN FOR ARTICLE

Taylor & Francis makes every effort to ensure the accuracy of all the information (the "Content") contained in the publications on our platform. Taylor & Francis, our agents, and our licensors make no representations or warranties whatsoever as to the accuracy, completeness, or suitability for any purpose of the Content. Versions of published Taylor & Francis and Routledge Open articles and Taylor & Francis and Routledge Open Select articles posted to institutional or subject repositories or any other third-party website are without warranty from Taylor & Francis of any kind, either expressed or implied, including, but not limited to, warranties of merchantability, fitness for a particular purpose, or non-infringement. Any opinions and views expressed in this article are the opinions and views of the authors, and are not the views of or endorsed by Taylor & Francis. The accuracy of the Content should not be relied upon and should be independently verified with primary sources of information. Taylor & Francis shall not be liable for any losses, actions, claims, proceedings, demands, costs, expenses, damages, and other liabilities whatsoever or howsoever caused arising directly or indirectly in connection with, in relation to or arising out of the use of the Content.

This article may be used for research, teaching, and private study purposes. Terms & Conditions of access and use can be found at <http://www.tandfonline.com/page/terms-and-conditions>

It is essential that you check the license status of any given Open and Open Select article to confirm conditions of access and use.

Pre-conditioning the epigenetic response to high vapor pressure deficit increases the drought tolerance of *Arabidopsis thaliana*

Penny J Tricker^{1†}, Carlos M Rodríguez López^{2‡}, P Hadley¹, C Wagstaff³, and Mike J Wilkinson^{2**}

¹School of Biological Sciences; University of Reading; Whiteknights; Reading, UK; ²Institute of Biological, Environmental, and Rural Sciences; Edward Llywd Building; University of Aberystwyth; Aberystwyth, Ceredigion UK; ³Department of Food and Nutritional Sciences; University of Reading; Whiteknights; Reading, UK

[†]Current affiliation: Australian Centre for Plant Functional Genomics; University of Adelaide; Glen Osmond, SA Australia; ^{*}Plant Research Centre; School of Agriculture, Food, and Wine; Faculty of Sciences; University of Adelaide; Glen Osmond, SA Australia

Keywords: *Arabidopsis thaliana*, abiotic stress, drought, methylation, transgenerational epigenetic heritability

Abbreviations: SI, stomatal index; WT, wild type; vpd, vapour pressure deficit; RH, relative humidity; chl., chlorophylls; d. wt., dry weight

Epigenetic modification of the genome via cytosine methylation is a dynamic process that responds to changes in the growing environment. This modification can also be heritable. The combination of both properties means that there is the potential for the life experiences of the parental generation to modify the methylation profiles of their offspring and so potentially to “pre-condition” them to better accommodate abiotic conditions encountered by their parents. We recently identified high vapor pressure deficit (vpd)-induced DNA methylation at 2 gene loci in the stomatal development pathway and an associated reduction in leaf stomatal frequency.¹ Here, we test whether this epigenetic modification pre-conditioned parents and their offspring to the more severe water stress of periodic drought. We found that 3 generations of high vpd-grown plants were better able to withstand periodic drought stress over 2 generations. This resistance was not directly associated with de novo methylation of the target stomata genes, but was associated with the *cmt3* mutant’s inability to maintain asymmetric sequence context methylation. If our finding applies widely, it could have significant implications for evolutionary biology and breeding for stressful environments.

One important function of cytosine methylation in plant genomes is to provide protection against the activation of harmful, transposable, and repeated sequence elements.² Under certain stressful conditions, the maintenance of methylated sites can become weakened, allowing elements to become activated, leading to increased retrotransposition and newly created, environmental sensitivity.³ DNA methylation is therefore not permanently fixed, but is dynamic and reversible with abiotic stress. Cytosine methylation is usually located away from the 5 prime of *Arabidopsis thaliana* gene coding regions to protect important endogenes from transcriptional silencing.⁴ However, where methylation exists in promoter regions, presumably primarily to suppress the expression of harmful elements, the presence of this methylation can also act to silence expression of the endogenous gene.⁵ Release, imposition, and spread of methylation under adverse environmental conditions around harmful elements can also influence proximal gene expression⁶ as we recently reported for 2 gene loci in the stomatal development pathway (*SPCH* and *FAMA*) in plants grown under increased evaporative demand.¹

As methylation is heritable through cell divisions, this mechanism might provide a “memory” of adverse conditions that allows for altered gene expression patterns over time and so lead to the generation of more tolerant phenotypes.⁷

In our plants, increased methylation in and around the *SPCH* and *FAMA* loci was associated with decreased expression of both target genes and a reduction in Stomatal Index (SI; stomata as a percentage of epidermal cells), although not in their stomatal density (stomata.mm⁻²). We hypothesized that these transcriptional and phenotypic changes, mediated by methylation, could increase the tolerance of our plants to more severe water stress. Epigenetic “priming” against biotic stress leads to enhanced resistance in the progeny compared with the parental generation⁸ and the progeny of plants salt-stressed at 25 or 75 mM NaCl also show increased tolerance to 125–150 mM NaCl.⁹ We found that constant exposure to high vpd protected *A. thaliana* ‘Landsberg erecta’ from the negative effect on leaf chlorophyll content of a 4-day periodic drought experienced 40 d post-germination (Fig. 1A) and also from the final drought-induced reduction in

*Correspondence to: Mike Wilkinson; Email: mike.wilkinson@adelaide.edu.au

Submitted: 06/12/13; Revised: 07/30/13; Accepted: 07/31/13

Citation: Tricker P, Rodríguez López C, Hadley P, Wagstaff C, Wilkinson M. Pre-conditioning the epigenetic response to high vapor pressure deficit increases the drought tolerance of *Arabidopsis thaliana*. Plant Signaling & Behavior 2013; 8:e25974; <http://dx.doi.org/10.4161/jrn.25974>

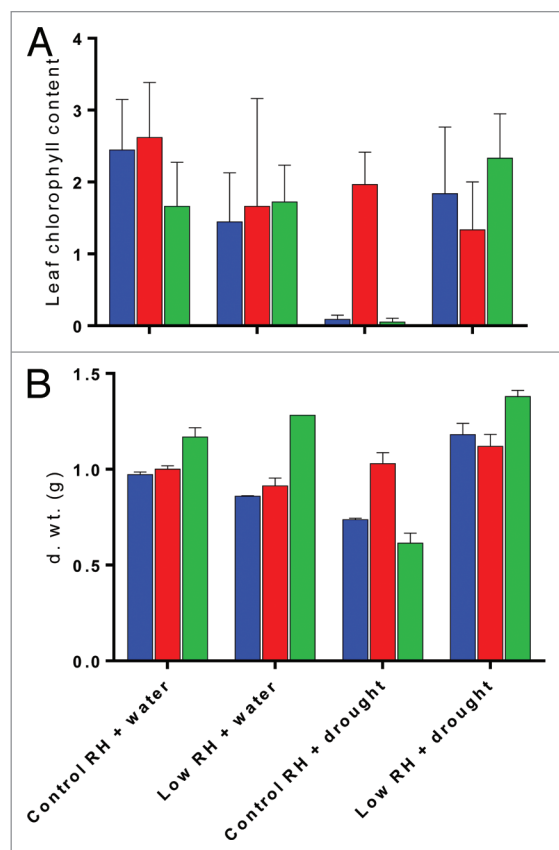


Figure 1. A The relative total chlorophyll content (measured in arbitrary units using a CL-01 chlorophyll meter (Hansatech, King's Lynn, UK)) of the fifth true leaf of *Arabidopsis thaliana* 'Landsberg erecta'. Blue bars = wild type, red bars = *cmt3*, and green bars = *drm1/2*, and (B) the final plant biomass (g) in control (65% RH) and high vapor pressure deficit (45% Low RH) when well-watered (+ water) and following 4 d drought and subsequent re-watering (+ drought). There was a significant interaction (Two-way ANOVA $p < 0.05$) between RH treatment and drought for both chl. content and d. wt. such that drought only reduced chl. under control ($p < 0.05$) and reduced and increased d. wt. respectively with control and high vapor pressure deficit ($p < 0.001$) (Post-hoc Bonferroni multiple comparisons).

plant biomass at harvest (following 4 d drought and subsequent re-watering) (Fig. 1B). Surprisingly, pre-conditioning with high vpd was even associated with an increase in final dry weight following drought.

To understand whether this response was directly associated with the increased methylation of the 2 stomatal pathway genes, we compared the responses of mutants deficient in the methyltransferases DRM2 and CMT3 to the same treatments. In the *drm1/2* mutant, there is no additional de novo methylation of *SPCH* or *FAMA* in comparison to the wild type (WT) grown under high vpd and no associated reduction in SI.¹ Drought reduced both chlorophyll content and final dry biomass of *drm1/2*. However, in common with the WT plants, neither chlorophyll content nor final biomass was reduced by drought when the plants had been pre-exposed to high vpd (Fig. 1A and B). It follows that DRM1/2 and specifically de novo methylation (a primary function of DRM2) is not responsible for the preconditioning that increased

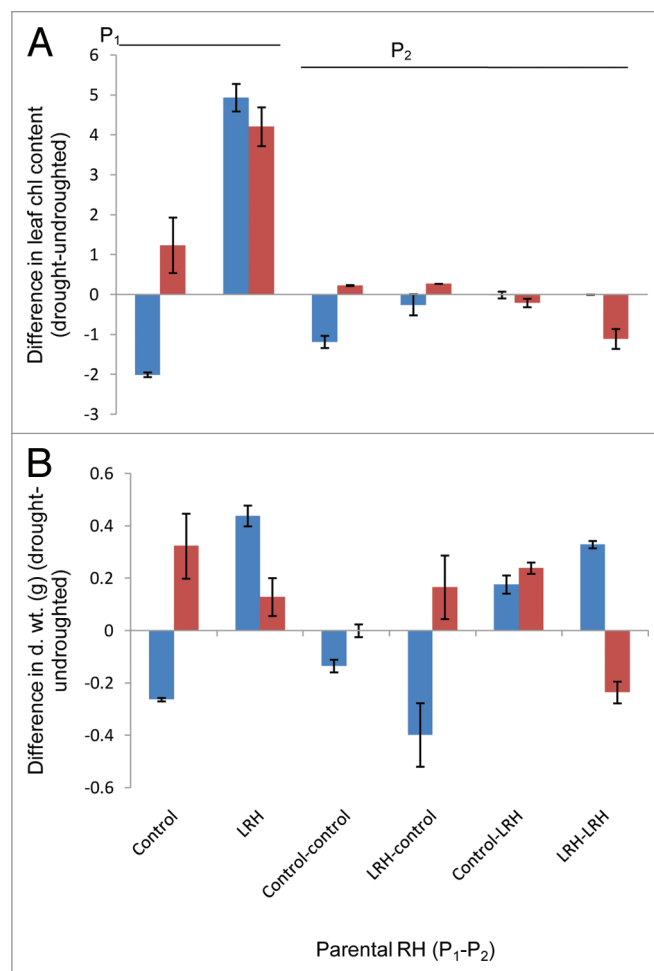


Figure 2. The difference in response of (A) leaf chlorophyll content (as before) and (B) final plant biomass (g) to drought (in comparison with the undroughted control) of generations of plant grown in high vapor pressure deficit or control conditions dependent on parental humidity treatment (x-axis; parental generation 1 (P_1)-parental generation 2 (P_2)) and pre-exposure of the current generation to high vpd (45% RH (LRH) red bars) or control (65% RH, blue bars) prior to drought. Data are means of measurements of 6 replicate plants (\pm SE) in each parent*treatment combination.

resilience to periodic drought following exposure to high vpd. Thus, stress-induced methylation of the *SPCH* and *FAMA* genes along with resultant reductions in stomatal frequency were not directly responsible for the changed response of vpd-preconditioned plants to drought. When the *cmt3* mutants were placed under high vpd, both *SPCH* and *FAMA* became hyper-methylated (similar to the WT) and the plants exhibited reduced SI. However, following drought treatment, *cmt3* was able to mimic the WT response to high vpd pre-conditioning in control conditions, such that leaf chlorophyll content and final dry biomass were unaffected by drought (Fig. 1A and B). This suggests that, although de novo methylation of stomatal development genes under high vpd is not specifically required to improve subsequent drought-tolerance of pre-conditioned plants, the maintenance of asymmetric sequence methylation for which *cmt3* is responsible is required in some form.

This finding also suggests 2 fairly obvious lines of future research: First, the replication of our observations in crop plants could provide new avenues in the search for genotypes and agronomic practices that enhance drought tolerance. One major cautionary note is that the epigenome of *A. thaliana* is relatively less extensive and complex than that of non-model plants¹⁰ but, at least with *Brassica napus*, it is possible to grow plants in the field that have reduced genome methylation and comparatively increased yield under moderate drought stress.¹¹ Second, we may be able to protect plants against future stress by environmental pre-conditioning, analogous to the “hardening off” already practiced in micropropagation and transplant production and to deficit irrigation treatments.¹² This would depend, to some extent, on the breeding potential of the response to pre-conditioning and its heritability.

More enticing would be the prospect of preconditioning filial generations (i.e., seed) against periodic drought. This would require the pre-conditioning effect to be maintained across meiotic, as well as mitotic, cell divisions. To investigate this possibility, we divided seeds from 3 generations of self-pollinated control and high vpd-treated plants. We then grew these plants in the 2 humidity environments and applied drought, as before. In this experiment, the effect of high evaporative demand during growth on drought response was positive for 2 generations but was outweighed by the effect of pre-conditioning the immediate parent (Fig. 2). In this relatively small-scale experiment and with a

fast-growing annual plant, we did not find any significant effects on seed size, germination, or ontogeny. Environmental conditioning of the parent therefore appears to hold some promise as a treatment that protects against drought. Progeny of parents and grandparents that had both been treated with high vpd, however, did not significantly benefit from a further exposure to high vpd prior to drought. It has been speculated that the transgenerational epigenetic effects of stress will not persist beyond 1 filial generation without a repeated exposure to the stress.⁹ In contrast, we find that repeated exposure may actually change the response in the opposite direction. This finding could have relevance to those interested in the adaptive potential of epigenetic modifications, to those attempting epigenetic breeding, and is certainly important for plant physiological experimentation where the growth environment of parental plants may prove to be a significant factor in observed progeny responses.

Disclosure of Potential Conflicts of Interest

No potential conflicts of interest were disclosed.

Acknowledgments

We would like to thank Cocoa Research (UK) Ltd. and the Dutch Ministry of Agriculture, Nature, and Food Quality (Ministerie van LNV) for the funding that made this work possible and M Richardson for his excellent technical support of the controlled environment experiments.

References

- Tricker PJ, Gibbins JG, Rodríguez López CM, Hadley P, Wilkinson MJ. Low relative humidity triggers RNA-directed de novo DNA methylation and suppression of genes controlling stomatal development. *J Exp Bot* 2012; 63:3799-813; <http://dx.doi.org/10.1093/jxb/ers076>; PMID:22442411
- Lisch D. Epigenetic regulation of transposable elements in plants. *Annu Rev Plant Biol* 2009; 60:43-66; <http://dx.doi.org/10.1146/annurev.arplant.59.032607.092744>; PMID:19007329
- Ito H, Gaubert H, Bucher E, Mirouze M, Vaillant I, Paszkowski J. An siRNA pathway prevents transgenerational retrotransposition in plants subjected to stress. *Nature* 2011; 472:115-9; <http://dx.doi.org/10.1038/nature09861>; PMID:21399627
- Finnegan EJ. DNA methylation: a dynamic regulator of genome organization and gene expression in plants. In: Pua E-C, Davey MR, eds. *Plant Developmental Biology – Biotechnological Perspectives: Volume 2*. Heidelberg: Springer-Verlag, 2010:295-323.
- Kinoshita Y, Saze H, Kinoshita T, Miura A, Soppe WJJ, Koornneef M, Kakutani T. Control of FWA gene silencing in *Arabidopsis thaliana* by SINE-related direct repeats. *Plant J* 2007; 49:38-45; <http://dx.doi.org/10.1111/j.1365-3113X.2006.02936.x>; PMID:17144899
- Huetzel B, Kanno T, Daxinger L, Aufsatz W, Matzke AJ, Matzke M. Endogenous targets of RNA-directed DNA methylation and Pol IV in *Arabidopsis*. *EMBO J* 2006; 25:2828-36; <http://dx.doi.org/10.1038/sj.emboj.7601150>; PMID:16724114
- Boyko A, Kovalchuk I. Genome instability and epigenetic modification—heritable responses to environmental stress? *Curr Opin Plant Biol* 2011; 14:260-6; <http://dx.doi.org/10.1016/j.pbi.2011.03.003>; PMID:21440490
- Slaughter A, Daniel X, Flors V, Luna E, Hohn B, Mauch-Mani B. Descendants of primed *Arabidopsis* plants exhibit resistance to biotic stress. *Plant Physiol* 2012; 158:835-43; <http://dx.doi.org/10.1104/pp.111.191593>; PMID:22209872
- Boyko A, Blevins T, Yao Y, Golubov A, Bilchak A, Illynskyy Y, Hollunder J, Meins F Jr., Kovalchuk I. Transgenerational adaptation of *Arabidopsis* to stress requires DNA methylation and the function of Dicer-like proteins. *PLoS One* 2010; 5:e9514; <http://dx.doi.org/10.1371/journal.pone.0009514>; PMID:20209086
- Johnson LJ, Tricker PJ. Epigenomic plasticity within populations: its evolutionary significance and potential. *Heredity* (Edinb) 2010; 105:113-21; PMID:20332811; <http://dx.doi.org/10.1038/hdy.2010.25>
- Hauben M, Haesendonckx B, Standaert E, Van Der Kelen K, Azmi A, Akpo H, Van Breusegem F, Guisez Y, Bots M, Lambert B, et al. Energy use efficiency is characterized by an epigenetic component that can be directed through artificial selection to increase yield. *Proc Natl Acad Sci U S A* 2009; 106:20109-14; <http://dx.doi.org/10.1073/pnas.0908755106>; PMID:19897729.
- Kang S, Zhang J. Controlled alternate partial root-zone irrigation: its physiological consequences and impact on water use efficiency. *J Exp Bot* 2004; 55:2437-46; <http://dx.doi.org/10.1093/jxb/erh249>; PMID:15361526