

# *A DFT study of the structures, stabilities and redox behaviour of the major surfaces of magnetite Fe<sub>3</sub>O<sub>4</sub>*

Article

Published Version

Creative Commons: Attribution 3.0 (CC-BY)

Open Access

Santos-Carballal, D., Roldan, A., Grau-Crespo, R. ORCID: <https://orcid.org/0000-0001-8845-1719> and de Leeuw, N. H. (2014) A DFT study of the structures, stabilities and redox behaviour of the major surfaces of magnetite Fe<sub>3</sub>O<sub>4</sub>. *Physical Chemistry Chemical Physics*, 16. 21082. ISSN 1463-9076 doi: <https://doi.org/10.1039/c4cp00529e> Available at <https://centaur.reading.ac.uk/37802/>

It is advisable to refer to the publisher's version if you intend to cite from the work. See [Guidance on citing](#).

To link to this article DOI: <http://dx.doi.org/10.1039/c4cp00529e>

Publisher: Royal Society of Chemistry

All outputs in CentAUR are protected by Intellectual Property Rights law, including copyright law. Copyright and IPR is retained by the creators or other copyright holders. Terms and conditions for use of this material are defined in the [End User Agreement](#).

[www.reading.ac.uk/centaur](http://www.reading.ac.uk/centaur)

**CentAUR**

Central Archive at the University of Reading

Reading's research outputs online

# A DFT study of the structures, stabilities and redox behaviour of the major surfaces of magnetite $\text{Fe}_3\text{O}_4$ †

Cite this: *Phys. Chem. Chem. Phys.*, 2014, 16, 21082

David Santos-Carballal,<sup>\*a</sup> Alberto Roldan,<sup>a</sup> Ricardo Grau-Crespo<sup>b</sup> and Nora H. de Leeuw<sup>\*a</sup>

The renewed interest in magnetite ( $\text{Fe}_3\text{O}_4$ ) as a major phase in different types of catalysts has led us to study the oxidation–reduction behaviour of its most prominent surfaces. We have employed computer modelling techniques based on the density functional theory to calculate the geometries and surface free energies of a number of surfaces at different compositions, including the stoichiometric plane, and those with a deficiency or excess of oxygen atoms. The most stable surfaces are the (001) and (111), leading to a cubic  $\text{Fe}_3\text{O}_4$  crystal morphology with truncated corners under equilibrium conditions. The scanning tunnelling microscopy images of the different terminations of the (001) and (111) stoichiometric surfaces were calculated and compared with previous reports. Under reducing conditions, the creation of oxygen vacancies in the surface leads to the formation of reduced Fe species in the surface in the vicinity of the vacant oxygen. The (001) surface is slightly more prone to reduction than the (111), due to the higher stabilisation upon relaxation of the atoms around the oxygen vacancy, but molecular oxygen adsorbs preferentially at the (111) surface. In both oxidized surfaces, the oxygen atoms are located on bridge positions between two surface iron atoms, from which they attract electron density. The oxidised state is thermodynamically favourable with respect to the stoichiometric surfaces under ambient conditions, although not under the conditions when bulk  $\text{Fe}_3\text{O}_4$  is thermodynamically stable with respect to  $\text{Fe}_2\text{O}_3$ . This finding is important in the interpretation of the catalytic properties of  $\text{Fe}_3\text{O}_4$  due to the presence of oxidised species under experimental conditions.

Received 5th February 2014,  
Accepted 8th May 2014

DOI: 10.1039/c4cp00529e

www.rsc.org/pccp

## 1 Introduction

Magnetite,  $\text{Fe}_3\text{O}_4$ , is of significant importance as the main component of industrial catalysts in, for example, the dehydrogenation of ethylbenzene<sup>1</sup> which is used as the primary feedstock for the production of 85% of commercial styrene.<sup>2,3</sup>  $\text{Fe}_3\text{O}_4$  is also used as a catalyst for the water gas shift (WGS) reaction, where molecular hydrogen is formed from carbon monoxide and water,<sup>4–6</sup> the Fischer–Tropsch synthesis of hydrocarbons<sup>7</sup> and the Haber–Bosch process for the production of ammonia.<sup>8–11</sup> The high stability and catalytic activity as well as its low cost make  $\text{Fe}_3\text{O}_4$  the catalyst of choice for these heterogeneous processes.<sup>12</sup> Furthermore,  $\text{Fe}_3\text{O}_4$  is important in other applications, such as groundwater remediation,<sup>13</sup> and potentially in

spintronic devices due to the conducting properties of only one channel of spins.<sup>14,15</sup>

Above 120 K,  $\text{Fe}_3\text{O}_4$  crystallizes in the spinel structure<sup>16</sup> with space group  $Fd\bar{3}m$  (cubic),<sup>17</sup> but when cooled below that temperature, it undergoes a phase transition known as the Verwey transition, where the space group changes to  $P2/m$  (monoclinic).<sup>17</sup> Thus, at room temperature,  $\text{Fe}_3\text{O}_4$  has the spinel face-centred cubic unit cell, on which we will focus in this paper. In this structure, the oxygen ions are regularly close packed along the [111] direction, separating layers of Fe ions, which appear in two different alternate arrangements. One is composed of Fe ions occupying two types of positions (octahedral ( $\text{Fe}_B$ ) and tetrahedral ( $\text{Fe}_A$ )) and the other one has only  $\text{Fe}_B$ , shown in the scheme in Fig. 1. The experimental lattice constant for  $\text{Fe}_3\text{O}_4$  is  $a = 8.390 \text{ \AA}$ <sup>17</sup> and each unit cell is composed of eight formula units (four rhombohedral primitive cells). Unlike the rest of the iron oxides,  $\text{Fe}_3\text{O}_4$  has Fe ions in mixed valence states, with the chemical formula often written as  $\text{Fe}_A^{3+}[\text{Fe}_B^{2+}\text{Fe}_B^{3+}]_B\text{O}_4$ , where A and B represent the tetrahedral and octahedral sites, respectively. The distribution where the 3+ cations occupy the A sites, while the B sites contain a mixture of 2+ and

<sup>a</sup> Department of Chemistry, University College London, 20 Gordon Street, WC1H 0AJ, London, UK. E-mail: david.carballal.10@ucl.ac.uk, n.h.deleeuw@ucl.ac.uk; Fax: +44 (0)20 7679 7463; Tel: +44 (0)20 7679 1015

<sup>b</sup> Department of Chemistry, University of Reading, Whiteknights, RG6 6AD, Reading, UK

† Electronic supplementary information (ESI) available. See DOI: 10.1039/c4cp00529e



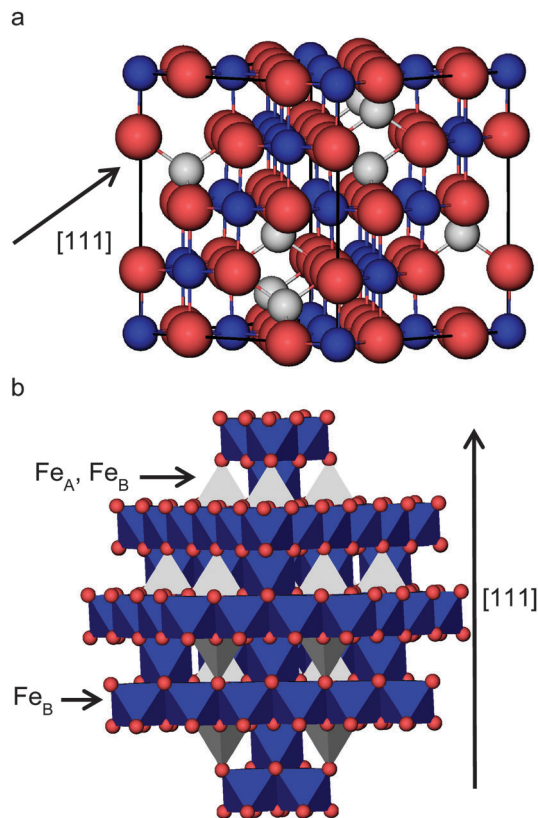


Fig. 1 View of the bulk structure of  $\text{Fe}_3\text{O}_4$ : (a) ball and stick model of the cubic unit cell and (b) polyhedral model showing the alternating layers of  $\text{Fe}_B$  and  $\text{Fe}_A\text{-Fe}_B$  ions separated by O ions.  $\text{Fe}_A$  ions are in grey,  $\text{Fe}_B$  ions are in blue and O ions are in red.

3+ cations, is called *inverse* (in contrast with the *normal* spinel where the 2+ cations are all located in the A site).

Biological,<sup>18,19</sup> extra-terrestrial<sup>20,21</sup> and synthetic<sup>22,23</sup>  $\text{Fe}_3\text{O}_4$  crystals have been described by several authors. Among all the crystal habits in which this mineral has been found, the three most common are the octahedral morphology enclosed by (111) surfaces; a truncated octahedron by adding the (001) plane and as twinning on the (111) surface.<sup>12,22</sup> Zhao *et al.* synthesized  $\text{Fe}_3\text{O}_4$  under a systematic range of conditions using a polyol process, where the crystals obtained ranged from cubic, truncated octahedral to octahedral shapes, depending on pH.<sup>22</sup>

The stacking sequence of the atomic planes perpendicular to the [001] direction can be represented as  $\text{Fe}_A\text{-}(\text{O-Fe}_B)$  (atoms inside brackets are within the same layer), leading in principle, to two different bulk-like terminations for the (001) surface, which are all polar. There are also two possible non-dipolar reconstructions of this surface, *i.e.* when the slab is terminated by either 0.5 mono layers (ML)  $\text{Fe}_A$  or 0.5 ML  $\text{O-Fe}_B$  in both the top and bottom surface. Experimentally, this surface has been found to have a  $(\sqrt{2} \times \sqrt{2})R45^\circ$  reconstruction for which different rationalizations have been given. Studies combining low-energy electron diffraction (LEED), X-ray photoelectron spectroscopy (XPS), X-ray photoelectron diffraction (XPD) and scanning tunnelling microscopy (STM),<sup>24</sup> as well as another work combining LEED with low-energy ion scattering (LEIS),<sup>25</sup> have suggested a

(001) surface terminated by the reconstructed non-dipolar 0.5 ML of  $\text{Fe}_A$ . On the other hand, a different study, combining STM, LEED, LEIS and XPS, has suggested a surface terminated by the reconstructed charge-compensated  $\text{O-Fe}_B$  with one oxygen vacancy per unit cell.<sup>26</sup> Meanwhile, Voogt *et al.*<sup>27</sup> were unable to differentiate them based on reflection high-energy electron diffraction (RHEED) and LEED, suggesting as possible terminations: the reconstructed non-dipolar 0.5 ML  $\text{Fe}_A$  layer or the reconstructed charge-compensated  $\text{O-Fe}_B$  layer with oxygen vacancies or hydroxyl groups.<sup>27</sup> More recently, Parkinson *et al.*<sup>28</sup> have identified experimentally using STM and LEED images that the (001) surface terminations are temperature dependent. The 0.5 ML  $\text{O-Fe}_B$  termination or one with *wavelike* structure and small defects, such as hydroxyl groups, is thermodynamically more stable at 923 K, while at lower temperatures (623 K) the surface terminated by 0.5 ML of  $\text{Fe}_A$  is observed, although some point-defects may stabilise other terminations.<sup>28</sup>

To date, most computational efforts have been concentrated on explaining the stability of the bulk-like dipolar  $\text{O-Fe}_B$  termination, leaving largely ignored the reconstructed non-dipolar 0.5 ML  $\text{Fe}_A$  termination. Pentcheva *et al.*<sup>29</sup> have studied the stability under varying redox conditions of one ideal and reconstructed stoichiometric (0.5 ML  $\text{Fe}_A$ ) and several non-stoichiometric terminations using spin-polarised density functional theory (DFT) calculations. These authors found that the modified polar bulk-like  $\text{O-Fe}_B$  termination was the most stable for the whole range of chemical potential,<sup>29</sup> which was validated by experimental X-rays diffraction (XRD)<sup>29</sup> and by the *wavelike* pattern along the [011] direction observed on experimental STM images.<sup>30</sup> Further studies by Parkinson *et al.*<sup>31</sup> of this surface termination using spin-polarized DFT + *U* calculations supported the Jahn-Teller distortion of this surface based on simulation of STM images of antiphase domain boundaries (APDBs).<sup>31</sup>

In the [011] direction,  $\text{Fe}_3\text{O}_4$  is composed of alternating layers of  $(\text{Fe}_A\text{-Fe}_B\text{-O})$  and  $(\text{Fe}_B\text{-O})$ . After reconstruction, two non-dipolar terminations are possible: one terminated by the  $(\text{Fe}_B\text{-O})$  layer with 0.25 ML  $\text{Fe}_A$  on top and another terminated by the  $(\text{Fe}_A\text{-Fe}_B\text{-O})$  layer with 0.25 ML of  $\text{Fe}_A$  vacancies. Single crystal studies carried out on this surface, involving the use of STM, LEED, scanning tunnelling spectroscopy (STS) and Auger electron spectroscopy (AES), have found a one-dimensional reconstruction along the [011] direction, which was concluded not to have a simple bulk iron-oxide termination.<sup>32,33</sup> Subsequent studies supported by atomically resolved STM<sup>34-36</sup> suggested a model based on a surface terminated by a polar  $(\text{Fe}_A\text{-Fe}_B\text{-O})$  bulk-like layer, in order to explain the atomic rows observed on the tops of ridges along the [011] direction. However, the authors also left open the possibility of alternative models, including surface reconstruction, to interpret the STM images.<sup>34</sup>

The (111) surface is the dominant cleavage plane of  $\text{Fe}_3\text{O}_4$ , and the stacking of the atomic layers perpendicular to this surface is  $\text{Fe}_{A1}\text{-Fe}_{B1}\text{-Fe}_{A2}\text{-O}_1\text{-Fe}_{B2}\text{-O}_2$ . All of the six possible different bulk-like surface terminations are dipolar. Only two reconstructions lead to non-dipolar terminations, *i.e.* 0.5 ML  $\text{Fe}_{B1}$  or 0.5 ML  $\text{Fe}_{B2}$ . Several possible terminations have been described from LEED and STM results: one dipolar plane



showing close packed features (due to 0.75 ML of Fe<sub>B2</sub> and 0.25 ML of O<sub>2</sub> over a close packed O<sub>1</sub> layer);<sup>37</sup> a reconstructed non-dipolar honeycomb plane (due to 0.5 ML of Fe<sub>B1</sub>), which was the most stable one;<sup>37</sup> a reconstructed dipolar 0.25 ML Fe<sub>A1</sub> plane;<sup>38</sup> as well as a regular bulk-like dipolar Fe<sub>A1</sub> termination and an intermediate case between the former two, which were obtained as a function of the annealing temperature.<sup>39</sup> Again, most of the computational studies have been directed towards the dipolar bulk-like terminations of the (111) surface. Martin *et al.*<sup>40</sup> used spin-polarized DFT calculations to study the dipolar non-stoichiometric bulk-like Fe<sub>B1</sub> and Fe<sub>A1</sub> terminations of the (111) surface and they found Fe<sub>B1</sub> to be the more stable of the two, which they validated through comparison with experimental STM images.<sup>40</sup> Berdunov *et al.*<sup>41</sup> used DFT to study the dipolar non-stoichiometric bulk-like O<sub>2</sub> termination of the (111) surface which was also validated *via* comparison with experimental STM images.<sup>41</sup> Kiejna *et al.*<sup>42</sup> studied the non-stoichiometric bulk-like dipolar terminations of the (111) surface using DFT + *U*, and although they did not calculate the stoichiometric slab, they predicted the Fe<sub>A1</sub> termination as the most stable for the whole range of chemical potential they considered.<sup>42</sup> Reduced surfaces of the Fe<sub>3</sub>O<sub>4</sub>(111) surface show superstructures with Fe<sub>1-x</sub>O(111) islands,<sup>43</sup> which makes the surface even richer in possible terminations.

Following the seminal work by Tasker<sup>44</sup> on the surface properties of ionic solids, in the present work we have used DFT + *U* to investigate the non-dipolar stoichiometric terminations of the low Miller index surfaces of Fe<sub>3</sub>O<sub>4</sub>, in order to complement previous experimental and computational studies. We report the equilibrium morphology of the crystals enclosed by stoichiometric non-dipolar surfaces and the factors that govern the redox properties of the most common surfaces, (001) and (111), which are also the most prominent surfaces of Fe<sub>3</sub>O<sub>4</sub> moieties.<sup>45,46</sup> We have also calculated the STM images of the different stoichiometric non-dipolar terminations of these surfaces to determine the most likely to appear in nanocrystals through comparisons with available experimental STM data. We have studied the redox processes by the systematic formation of single O vacancies and the adsorption of single O on the surface, as opposed to previous computational studies which have focused on bulk-like terminations and their modifications. This approach allows us to explore how these redox processes determine the surface properties by finely tuning the conditions of temperature and oxygen partial pressure on the stoichiometric non-dipolar surfaces.

## 2 Computational methods

### 2.1 Calculation details

We have used the Vienna *Ab initio* Simulation Package (VASP)<sup>47–50</sup> to carry out quantum mechanical calculations within the usual Kohn–Sham (KS) implementation of DFT. The Perdew–Burke–Ernzerhof (PBE)<sup>51,52</sup> version of the generalized gradient approximation (GGA) was employed as the exchange–correlation potential, together with the semiempirical method of Grimme<sup>53</sup> to model

the long-range dispersion interactions. The core electrons, up to and including the 3p levels of Fe and the 1s of O, were frozen and their interaction with the valence electrons was described by the projector augmented wave (PAW) method.<sup>54,55</sup> KS valence states were expanded in a plane-wave basis set with a cutoff of 400 eV for the kinetic energy. An energy threshold-defining self-consistency of the electron density was set to 10<sup>−5</sup> eV and the optimization of the structures was conducted *via* a conjugate gradients technique, which stops when the Hellmann–Feynman forces on all atoms are less than 0.01 eV Å<sup>−1</sup>.

All calculations were spin-polarised, but spin–orbit coupling was not considered. Within the VASP code, it is possible to assign an initial spin population and orientation to each atom of the system, to converge to a particular spin configuration. Thus, the initial magnetic moments were set following a high-spin ferrimagnetic structure, *i.e.* with opposite spins in the tetrahedral and octahedral sites, in agreement with experiment.<sup>56,57</sup> In order to describe the electronic and magnetic behaviour properly, an accurate treatment of the electron correlation in the localized d-Fe orbitals is crucial. Hence, we have used the Dudarev *et al.*<sup>58</sup> approach within the DFT + *U*<sup>59</sup> for improving the description of these localized states. This is a correction typically used where standard LDA and GGA functionals fail to describe the electronic structure properly.<sup>60</sup> The value for the on-site Coulomb interaction term in this study was *U*<sub>eff</sub> = 3.7 eV, which was obtained following the procedure described in ref. 15 but adjusted to a different DFT functional. The limitation of this approximation is the difficulty in choosing an adequate value for the *U*<sub>eff</sub> parameter, which is usually property dependent.<sup>61–63</sup> An alternative computational approach is the use of hybrid functionals, although in that case the calculated properties also depend on the fraction of the exact Hartree–Fock exchange that is added to the DFT exchange term,<sup>60,64–67</sup> and the calculations are too computationally expensive to be applied to the large surface models employed in this study.

Bulk calculations were performed using the rhombohedral primitive unit cell containing 14 atoms (Fe<sub>6</sub>O<sub>8</sub>). Integrations in the reciprocal space were performed using a Monkhorst–Pack grid of 7 × 7 × 7 *Γ*-centred *k*-points,<sup>68–70</sup> which ensured electronic and ionic convergence. Test calculations with a higher number of *k*-points led to an energy difference smaller than 1 meV per cell. *k*-Point grids for the surface calculations were chosen in a such a way that a similar spacing of points in the reciprocal space was maintained.

Within this setup, we calculated a lattice constant for the bulk Fe<sub>3</sub>O<sub>4</sub> unit cell of *a* = 8.398 Å, in excellent agreement with the experimental value of 8.390 Å,<sup>17</sup> and an equilibrium volume of *V* = 74.043 Å<sup>3</sup> per formula unit. The calculated total spin magnetization per formula unit, *M*<sub>S</sub> = 4.00 μ<sub>B</sub> lies very close to the 4.05 μ<sub>B</sub>, measured experimentally at 4.2 K,<sup>71</sup> and the atomic spin densities, *m*<sub>s</sub>(Fe<sub>A</sub>) = 4.032 μ<sub>B</sub>, *m*<sub>s</sub>(Fe<sub>B</sub>) = 3.906 μ<sub>B</sub> and *m*<sub>s</sub>(O) = 0.055 μ<sub>B</sub> have the ferrimagnetic character observed before,<sup>15,57</sup> following very closely the Néel model,<sup>56</sup> where the electronic configurations are e<sub>g</sub><sup>2</sup><sub>↑</sub>t<sub>2g</sub><sup>3</sup><sub>↑</sub> for Fe<sub>A</sub> and t<sub>2g</sub><sup>3</sup><sub>↑</sub>t<sub>2g</sub><sup>1</sup><sub>↓</sub>e<sub>g</sub><sup>2</sup><sub>↑</sub> as well as t<sub>2g</sub><sup>3</sup><sub>↑</sub>e<sub>g</sub><sup>2</sup><sub>↑</sub> for Fe<sub>B</sub>. Calculated charges for Fe<sub>A</sub>, Fe<sub>B</sub> and O atoms are 1.589,





1.521 and  $-1.158 e^-$  respectively. For further information, the density of states of the  $Fe_3O_4$  bulk phase are provided in Fig. S1 of the ESI.†

## 2.2 Surface models

In order to build slab models of the  $Fe_3O_4$  surfaces, two models are used in the literature to explain the reconstructions found in polar surface terminations: the electron-counting<sup>72</sup> and the dipole method.<sup>44</sup> Both models are based on the condition that the net surface charge or dipole perpendicular to the surface, respectively, must be zero.

A surface structure satisfies the model of electron-counting (*i.e.*, it is charge- or auto-compensated) if all the partially filled dangling bonds in the cations are empty and the partially filled dangling bonds in the anions are full. It assumes that the atomic orbitals are in the conduction or valence band respectively. To achieve this, the model postulates that a stable surface structure will be the one that (after reconstruction) is able to accommodate exactly all the electrons of the partially filled orbitals of the cations (in the conduction band) into the partially filled orbitals of the anions (valence band). However, the disadvantage of this approach is that this condition directly links to the conducting properties of the material under investigation. If the surface satisfies this model, it will be a semi-conductor; otherwise the remnant electrons will lead to a metallic surface.

The dipole method for reconstructing dipolar surfaces is a more robust option, at least with half-metallic materials like  $Fe_3O_4$ ,<sup>15</sup> because it is not connected to the conducting properties of the structure. This method, pioneered by Tasker,<sup>44</sup> considers the crystal as a stack of planes, where three possibilities can arise.<sup>44</sup> In type 1, each plane has overall zero charge because it is composed of anions and cations in stoichiometric ratio which makes it non-dipolar, whereas in type 2 the stacking of three symmetrically charged planes cancels out the dipole moment perpendicular to the surface. In type 1 and 2, no reconstruction of the surface is needed because the repeat unit is non-dipolar perpendicular to the surface. However, in type 3 surfaces, alternating charged planes stack in a sequence that produces a dipole moment perpendicular to the surface, but the surface can be reconstructed through moving half of the ions with the same charge from the top to the bottom of the slab. This method also guarantees that the surface does not generate an electrical field within the crystal and therefore the potential felt at each ion site reaches the constant bulk value, a condition that is not necessarily satisfied by the electron-counting model.

All the surfaces in this study were created by cutting the geometry optimised bulk using the dipole method implemented in METADISE.<sup>73</sup> The resulting slabs are represented by keeping fixed the bottom atoms at their *ab initio* relaxed bulk positions to simulate the bulk phase of  $Fe_3O_4$  and by relaxing the rest of the slab during the optimization, giving a single relaxed surface. The slabs comprise 56 atoms (8 formula units), with 24 Fe and 32 O atoms. The  $Fe_3O_4(001)$ , (011) and (111) surfaces were modelled with slabs having surface areas

of 70.5, 99.7 and  $61.1 \text{ \AA}^2$ , respectively, and they were constructed of 9, 5 and 13 atomic layers, respectively. Fig. 2(c) provides a representation of their stacking sequence in each direction. For the (001) and (111) surfaces, the simulation slabs were symmetrical along the  $z$  axis. Top species in the (001) surface were (0.5 ML)  $Fe_A$  atom and 2  $Fe_B$  and 4 O atoms (equivalent to 0.5 ML for each of the ions) for terminations A and B respectively, see Fig. 2. For the (111) surface, terminations A and B were terminated by half of the  $(Fe_B)_6$  and  $(Fe_B)_2$  bulk layers respectively. However, the simulation slabs for the (011) surface were asymmetrical along the  $z$  axis, with complementary top and bottom layers. Top layer of termination A was a single (0.25 ML)  $Fe_A$  atom above a bulk-like O- $Fe_B$  layer, while its bottom layer was a bulk-like  $Fe_A$ - $Fe_B$ -O layer with one (0.25 ML)  $Fe_A$  vacancy. For termination B, top and bottom layers were the other way round.

In every simulation cell, a vacuum region of  $12 \text{ \AA}$  was added perpendicular to the surface to avoid interaction between the periodic slabs. Different slab and vacuum thicknesses as well as numbers of relaxed layers were tested until convergence within 1 meV per cell was achieved. Since we are going to remove and add O atoms to the surfaces at one side of the slab only, we applied dipole corrections perpendicular to all surfaces in the calculations to enhance the electronic convergence.<sup>74,75</sup> We have used Bader analysis<sup>76</sup> in the implementation of Henkelman and co-workers<sup>77-79</sup> to analyse the charge transfer around the defects introduced in the stoichiometric surfaces. We have chosen this methodology for partitioning atomic charges, as it is based upon the charge density, which is insensitive to the metal oxidation state and the basis set used, unlike wavefunction-based population schemes.<sup>80-82</sup> The DOS of the optimised surfaces is presented in Fig. S1 of the ESI.†

## 2.3 Calculation of surface energies

We have carried out energy minimisations of the (001), (011) and (111) slabs to obtain their surface energies. We derived the surface energy of the unrelaxed surface ( $\gamma_u$ ) from a single point calculation of the pristine symmetric stoichiometric slab before relaxation, *via* equation:

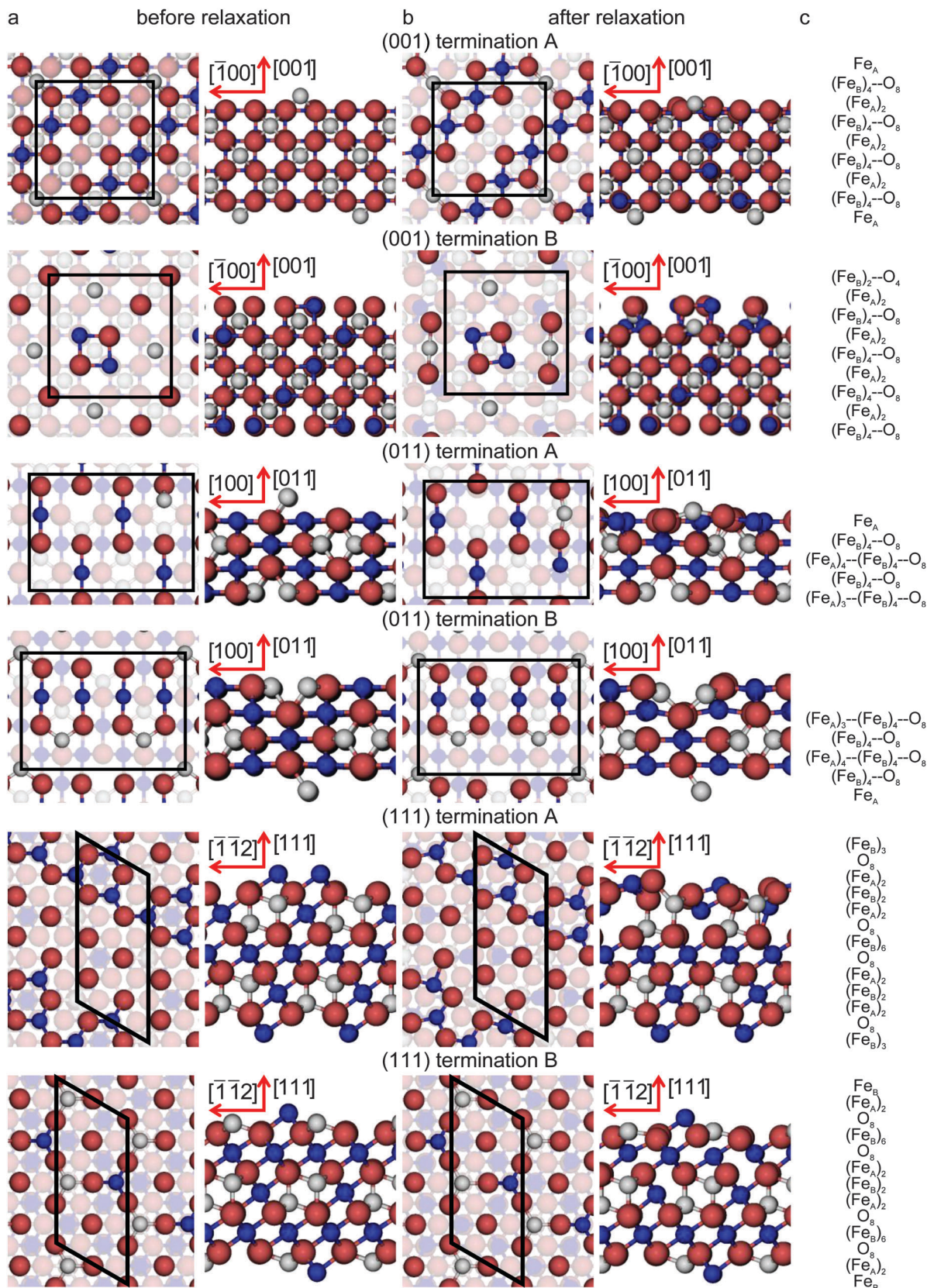
$$\gamma_u = \frac{E_{\text{slab,u}} - E_{\text{bulk}}}{2A} \quad (1)$$

where  $E_{\text{slab,u}}$  is the total energy of the unrelaxed slab,  $E_{\text{bulk}}$  is the energy of the bulk containing the same number of formula units as in the slab and  $A$  is the surface area of one side of the slab. During relaxation, the top surface was allowed to relax and the bottom one was kept fixed. As this slab model does not provide an isolated relaxed surface and both sides of the symmetric stoichiometric slabs are considered in the calculation of the energy, their surface energies ( $\gamma_r$ ) and ( $\gamma_u$ ), for the relaxed and unrelaxed sides respectively, are related by eqn (2), where  $E_{\text{slab,r}}$  is the slab total energy after relaxation.

$$\gamma_r + \gamma_u = \frac{E_{\text{slab,r}} - E_{\text{bulk}}}{A} \quad (2)$$

At this point it is also worth noting that eqn (1) and (2) are only useful for calculating the average surface energy of





**Fig. 2** Top and side view of the simulation slabs for the low-index surfaces of  $\text{Fe}_3\text{O}_4$ . The surfaces are shown (column a) before, (column b) after relaxation and (column c) their stacking sequence. For the colour code see Fig. 1. Layers with atoms with dangling bonds are highlighted. Crystallographic directions for the top view of (001) surface terminations is  $[100]$  for the abscissae towards the right; for the (011) surface terminations it is  $[0\bar{1}1]$  for the abscissae towards the right; and for the (111) surface terminations it is  $[0\bar{1}1]$  for the longest axis towards the top.





terminations A and B of (011), as the slabs are asymmetric and complementary. The cleavage energy ( $E_{\text{cleav}} = 2 \cdot \gamma_r$ ) is thus related to the energy required to create both top and bottom surfaces of the slab.

We have also calculated the degree of relaxation of each surface as a percentage (for (011)  $\gamma_r \sim E_{\text{cleav}}/2$ ):

$$\text{Relaxation} = \frac{\gamma_u - \gamma_r}{\gamma_u} \cdot 100 \quad (3)$$

The equilibrium morphology of a  $\text{Fe}_3\text{O}_4$  crystal is determined by the surface free energies and the related growth rates of the various surfaces, which provides a measure of the relative stabilities of the surfaces. The morphology is constructed according to Wulff's theorem,<sup>83</sup> where the distance from the centre of the particle to the surface is proportional to the surface energy. It is based on the Gibbs approach,<sup>84</sup> who proposed that under thermodynamic control the equilibrium form of a crystal should possess minimal total surface free energy for a given volume. Previous studies have shown<sup>85,86</sup> that using surface energies to calculate crystal morphologies provides good agreement with experiment as the difference in entropy between bulk and surface is small.

#### 2.4 Redox processes of the (001) and (111) surfaces

We have also examined the redox properties of the most common  $\text{Fe}_3\text{O}_4$  surfaces, the (001) and (111), by removing or adding O atoms to form non-stoichiometric compositions of the top atomic layer. We have based the discussion of the stabilities of the non-stoichiometric terminations on the *ab initio* thermodynamics formalism<sup>87</sup> where the surface free energy ( $\sigma$ ) is calculated according to the equation:

$$\begin{aligned} \sigma(T, p) &= \gamma_r + \Delta\sigma(T, p) \\ \Delta\sigma(T, p) &= \frac{E_{\text{slab},r}^{\Gamma_{\text{O}} \neq 0} - E_{\text{slab},r}^{\Gamma_{\text{O}} = 0}}{A} - \frac{\Gamma_{\text{O}}}{A} \cdot \mu_{\text{O}} \end{aligned} \quad (4)$$

where  $\Delta\sigma(T, p)$  is the difference between the surface energy of the stoichiometric surface and the surface free energy of the non-stoichiometric plane and  $\Gamma_{\text{O}}$  is the excess of O ions at the top surface of the slab expressed in eqn (5) ( $N_{\text{O}}$  and  $N_{\text{Fe}}$  are the number of O and Fe ions in the slab model respectively).

$$\Gamma_{\text{O}} = N_{\text{O}} - \frac{4}{3}N_{\text{Fe}} \quad (5)$$

It is possible to express the chemical potential of molecular  $\text{O}_2$  ( $\mu_{\text{O}}$ ) in the gas phase as:

$$\mu_{\text{O}}(T, p) = \frac{1}{2} \left( E_{\text{O}_2} + \Delta g_{\text{O}_2}(T, p_0) + k_{\text{B}}T \ln \frac{p}{p_0} \right) \quad (6)$$

Here the first term within the bracket is the DFT energy of the  $\text{O}_2$  molecule. The second term is the difference in the Gibbs free energy per  $\text{O}_2$  molecule at  $p_0 = 1$  bar between 0 K and  $T$ , which in this study has been extracted from thermodynamic tables<sup>88</sup> to avoid its calculation in the gas phase.<sup>89,90</sup> The last term represents the change in free energy of the  $\text{O}_2$  gas (assuming ideal gas behaviour) at constant temperature ( $T$ ) when its partial pressure changes from  $p_0$  to  $p$ .

We express  $\mu_{\text{O}}$  with respect to half the energy of the  $\text{O}_2$  molecule. The above convention makes  $\mu_{\text{O}}$  a function of only experimental quantities. For consistency in the evaluation of the slab energies, we must subtract half of the energy of the  $\text{O}_2$  molecule for each O atom in the slab. Expressing  $\mu_{\text{O}}$  as described, it is possible to plot the surface free energies given by eqn (4) for different surface compositions as a function of  $\mu_{\text{O}}$ , and discuss the redox behaviour of the surface.<sup>89,90</sup>

Finally, for the calculation of the energy required to create an O atom vacancy or to add the atom on the surfaces, we need the energy of the  $\text{O}_2$  molecule. However, it is known that GGA calculations fail in the description of the binding energy for this particular molecule, as is shown in the (over)binding of the  $\text{O}_2$  molecule.<sup>52</sup>

According to our calculations, the  $\text{O}_2$  triplet ground state has an equilibrium bond length of 1.23 Å and a binding energy of  $-6.08$  eV (with respect to triplet oxygen atoms), comparing well with previous computational studies.<sup>62,91,92</sup> However, this value lies 0.91 eV below the experimental binding energy ( $-5.17$  eV).<sup>93</sup> Therefore, we have considered that half of the over-binding of the  $\text{O}_2$  molecule, 0.46 eV, will be added to correct the adsorption or vacancy formation energies with respect to one O atom. The redox processes in the following sections are all reported with respect to the corrected value. A comparative analysis with uncorrected energy values is provided in the ESI.†

#### 2.5 Calculation of scanning tunnelling microscopy (STM) images

The STM images were simulated according to the basic formulation of the Tersoff-Hamann approach<sup>94</sup> where the STM tip was approximated to an infinitely small point source. The tunnelling current between the surface and the tip in the STM experiments is proportional to the local density of the states (LDOS) integrated between the Fermi energy and the sample bias. We have used the program HIVE<sup>95</sup> for the production of our STM topographic images, where the DFT-based partial charge density was integrated from  $-2.5$  eV to the Fermi energy. In the constant current mode, the tip of the STM is moved across the surface where its height varies to keep the charge density at a constant value, which is given by a constant LDOS. We map the simulated STM images by means of the heights as a function of the position of the tip over the surface. More details about the method can be found elsewhere.<sup>96</sup>

## 3 Results and discussion

### 3.1 Stoichiometric surfaces

We have modelled different terminations of the three lowest Miller index surfaces of  $\text{Fe}_3\text{O}_4$ , shown in Fig. 2, whereas Table 1 summarises their surface energies before and after energy minimization. Before relaxation, the order of increasing surface energies, and therefore decreasing stability, is (001) < (111) < (011), which remains the same after relaxation. Note that this order was established by taking into account only the most stable termination (with lowest  $\gamma$ ) per surface, as these terminations would be the most likely to appear for each plane.





**Table 1** Calculated surface energies before ( $\gamma_u$ ) and after ( $\gamma_r$ ) relaxation for the different terminations of the three lowest Miller index surfaces of  $\text{Fe}_3\text{O}_4$ 

Surface	$\gamma_u$ ( $\text{J m}^{-2}$ )	$\gamma_r$ ( $\text{J m}^{-2}$ )	Relaxation (%)
(001) Termination A	1.45	0.96	34.2
(001) Termination B	3.28	2.17	33.9
(011) Terminations A and B <sup>a</sup>	2.13	1.37	35.5
(111) Termination A	2.75	1.09	60.3
(111) Termination B	1.58	1.10	30.4

<sup>a</sup> Note that for the (011) surface it is only possible to report the average surface energy, as termination A and B are complementary.

Before geometry optimisation, termination A of the (001) slab was terminated by 0.5 ML of 2-coordinated  $\text{Fe}_A$  ions occupying a bridge site (above two O ions) with a  $(\sqrt{2} \times \sqrt{2})R45^\circ$  symmetry according to Wood's notation,<sup>97</sup> which is a vectorial description of the surface structure. Beneath the surface, the slab shows a bulk structure consisting of single rows in the [110] direction of 5-coordinated  $\text{Fe}_B$  ions alternating every two single rows of O ions with cubic packing, see Fig. 2. During energy minimization, the protruding  $\text{Fe}_A$  ions move 0.53 Å towards the bulk, *i.e.* they experienced ~50% inward relaxation based on ~1.05 Å as the layer interspacing, thereby becoming closer to the nearest two O (0.25 ML of the 2nd layer), which displace 0.35 Å to the surface to accommodate this relaxation, see Table 2. The relaxation pattern of the top atomic layer of the surface slab agrees semi-quantitatively with the ~40% inward relaxation reported for the topmost layer of this termination based on LEIS analysis,<sup>25</sup> which is generally regarded to fit better than the more complex relaxation pattern reported before for this surface termination by Chambers *et al.*<sup>24</sup> Previous studies, purely theoretical<sup>98</sup> or combined with experiments,<sup>99</sup> have concluded that the  $\text{Fe}_3\text{O}_4(001)$  surface terminates with Fe ion dimers with  $(\sqrt{2} \times \sqrt{2})R45^\circ$  symmetry. The second Fe may migrate from a sub-surface layer<sup>98</sup> or from a dipolar bulk-like  $\text{Fe}_A$  terminated (001) surface.<sup>99</sup> However, we have not included dimers here as this lies outside the scope of the present study. The surface energy of termination B of the (001) surface is also reported in Table 1, but we do not consider this plane for further analysis because of its high surface energy, which makes it very unlikely to appear in the  $\text{Fe}_3\text{O}_4$  crystal morphology.

The stacking sequence of the  $\text{Fe}_3\text{O}_4(011)$  surface is shown in Fig. 2 and the vertical shifts of the ions towards the vacuum after energy minimization are listed in Table 2. One of the two lowest energy surface terminations, termination A, terminates with 0.25 ML of mono-coordinated  $\text{Fe}_A$  at the surface followed by a bulk-like structure consisting of single rows of 4-coordinated  $\text{Fe}_B$  ions shifted 25% in the  $[01\bar{1}]$  direction and alternating with single rows of O ions with cubic packing. During energy minimisation, the protruding  $\text{Fe}_A$  ions move 0.98 Å towards the bulk, thereby compressing the surface layer atoms underneath which move horizontally to accommodate this relaxation. Termination B has essentially the same relaxed surface energy as termination A but it differs in its structure. It is terminated with a bulk-like structure consisting of a single row of 4-coordinated  $\text{Fe}_B$  ions between two rows of O ions. The latter O atoms are in cubic packing and alternate with double rows of 3-coordinated  $\text{Fe}_A$  ions in rhombohedral packing along the  $[01\bar{1}]$  direction. The double row of  $\text{Fe}_A$  ions is partially vacant by 0.25 ML with  $p(1 \times 2)$  symmetry. During energy minimization, the top  $\text{Fe}_A$  and  $\text{Fe}_B$  ions shift towards the bulk by 0.27 Å and 0.11 Å respectively which generates a 0.23 Å movement towards the surface of the  $\text{Fe}_B$  ions in the sub-surface layer. Based on the similarity between the relaxed structure of termination B, differing only by 0.25 ML  $\text{Fe}_A$  vacancy from the bulk-like  $\text{Fe}_A\text{-Fe}_B\text{-O}$  termination proposed in ref. 34, we can still compare some structural characteristics between them. The calculated  $\text{Fe}_B\text{-Fe}_B$  or  $\text{O-O}$  distance of the atoms lying in the same row along the  $[01\bar{1}]$  direction is 2.77 Å in termination B, which agrees well with their reported  $3.0 \pm 0.3$  Å.<sup>34</sup> Moreover, along the  $[001]$  direction, the calculated  $\text{Fe}_B\text{-O}$  distance of 1.92 Å also compares well with  $2.1 \pm 0.3$  Å from STM experiments.<sup>34</sup>

Finally, the bottom two panels of Fig. 2 represent the stacking sequence of the  $\text{Fe}_3\text{O}_4(111)$  surface terminations, while the vertical displacement of the ions in the surface regions during the optimisation are listed in Table 2. One of the two lowest energy terminations, termination A, contains 0.5 ML of 3-coordinated  $\text{Fe}_B$  ions with  $c(2 \times 4)$  symmetry, occupying hexagonal close packed (*hcp*) hollow positions in the top layer. The next layer has a bulk-like structure consisting of rows of O ions along the  $[01\bar{1}]$  direction with rhombohedral packing. The percentage relaxation experienced by this surface termination is the largest

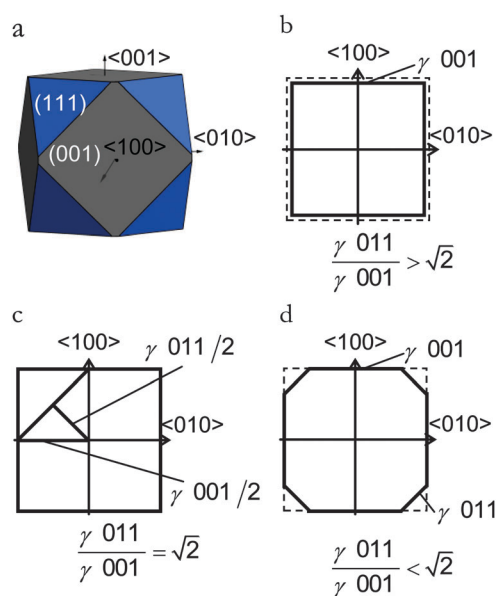
**Table 2** Perpendicular movement ( $\Delta d_z$ ) of the  $\text{Fe}_3\text{O}_4$  surface species on the most stable (001), (011) and (111) terminations after relaxation. Note that a negative value indicates a movement towards the bulk. Distances are given in Å

(001) Termination A			(011) Termination A			(011) Termination B			(111) Termination A			(111) Termination B		
Layer	Species	$\Delta d_z$	Layer	Species	$\Delta d_z$	Layer	Species	$\Delta d_z$	Layer	Species	$\Delta d_z$	Layer	Species	$\Delta d_z$
1st	$\text{Fe}_A$	-0.53	1st	$\text{Fe}_A$	-0.98	1st	$\text{Fe}_A$	-0.27	1st	$\text{Fe}_B$	-0.59	1st	$\text{Fe}_B$	-0.09
2nd	O 0.50 ML	0.02	2nd	O	-0.02		$\text{Fe}_B$	-0.11	2nd	O 0.75 ML	-0.10	2nd	$\text{Fe}_A$	-0.31
	$\text{Fe}_B$	-0.05		$\text{Fe}_B$	-0.11		O	0.08		0.25 ML	0.62	3rd	O	-0.03
	O 0.25 ML	0.35		O	-0.03	2nd	O	-0.06	3rd	$\text{Fe}_A$	0.09	4th	$\text{Fe}_B$	0.06
	0.25 ML	-0.08	3rd	$\text{Fe}_A$	-0.04		$\text{Fe}_B$	0.23	4th	$\text{Fe}_B$	0.41	5th	O	0.03
3rd	$\text{Fe}_A$	0.11		$\text{Fe}_B$	0.06		O	-0.04	5th	$\text{Fe}_A$	-0.21	6th	$\text{Fe}_A$	0.02
4th	O	-0.03		O	0.01	3rd	$\text{Fe}_A$	0.02	6th	O	-0.08	7th	$\text{Fe}_B$	0.03
	$\text{Fe}_B$	0.03	Bulk				$\text{Fe}_B$	0.00	7th	$\text{Fe}_B$	0.00	Bulk		
	O	0.05					O	0.00	Bulk					
5th	$\text{Fe}_A$	-0.01				Bulk								
Bulk														



of this study. During its geometry optimisation, the top Fe<sub>B</sub> ions move towards the bulk by 0.59 Å, causing 0.25 ML of the O in the layer underneath to move towards the surface by 0.62 Å. As we can see in Table 2, the fourth and fifth atomic layers are also affected by the surface relaxation. Termination B terminates with 0.5 ML of 3-coordinated Fe<sub>B</sub> with  $p(1 \times 2)$  symmetry, where these ions occupy hcp hollow sites, followed by a bulk-like structure consisting of rows of Fe<sub>A</sub> alternating along the [011] direction with two rows of O ions with rhombohedral packing. During energy minimization, the top Fe<sub>B</sub> and Fe<sub>A</sub> ions move towards the bulk by 0.09 Å and 0.31 Å respectively. The mean Fe<sub>A</sub>-Fe<sub>B</sub> distance in the surface layer of the relaxed structure is 3.55 Å (as opposed to the calculated bulk value of 3.48 Å), which is in excellent agreement with  $3.6 \pm 0.4$  Å, the experimental distance reported between the two features (Fe<sub>A</sub> and Fe<sub>B</sub>) from an STM image.<sup>37</sup>

**3.1.1 Morphology.** Since the morphology of Fe<sub>3</sub>O<sub>4</sub> crystals has been studied experimentally, we compare our results with those reported for synthetic Fe<sub>3</sub>O<sub>4</sub> crystals.<sup>22</sup> We have derived a Wulff<sup>33</sup> crystal morphology of pristine Fe<sub>3</sub>O<sub>4</sub> using the lowest surface energies for each Miller index. Its calculated equilibrium morphology is then expressed as a cubic shape with truncated corners, Fig. 3(a). As expected, the (001) plane dominates the morphology, followed by the (111) surface truncating the corners of the cube. The (011) surface does not appear in the morphology of Fe<sub>3</sub>O<sub>4</sub> due to the mathematical relation between the energy of the surfaces and their position in the crystal.<sup>92</sup> Despite the (011) surface having a surface energy of the same order of magnitude as the others, it is not expressed in the Wulff construction due to competition with the (001) surface. The ratio between their surface energies:  $\gamma(011)/\gamma(001) = 1.43 > \sqrt{2}$ , see Fig. 3(b), and,



**Fig. 3** (a) Equilibrium morphology for a Fe<sub>3</sub>O<sub>4</sub> crystal derived from a Wulff construction. (b–d) Schemes of the crystal cross-sectional planes along the <100> and <010> axes for different ratios of stabilities of the lateral surfaces, which illustrate why the (011) surface is absent in the equilibrium morphology.

as shown in Fig. 3(d), the (011) surface would only become present in the crystal morphology if  $\gamma(011)/\gamma(001) < \sqrt{2}$ .

There are many ways to modify the shape of nanoparticles, such as solvent, media, capping agents, temperature or viscosity, but the Wulff morphology shown in Fig. 3(a) expresses a particle produced in conditions of perfect thermodynamic equilibrium, vacuum and at 0 K. Nevertheless, our results compare well with the morphologies of crystals synthesised by Zhao *et al.*,<sup>22</sup> who described the formation of Fe<sub>3</sub>O<sub>4</sub> under different pH conditions. They increased the OH<sup>-</sup> concentration and the resulting crystal shapes changed from cubic (or spherical – depending on other conditions) at low pH *via* truncated octahedral to octahedral at high pH values. All their crystals showed mainly the (001) and (111) surfaces but, in some cases, a little (011) surface was expressed due to certain conditions which may modify the surfaces' relative energies. The occasional appearance of the (011) surface is rationalised in terms of kinetically-controlled anisotropic growth of the Fe<sub>3</sub>O<sub>4</sub> nanoparticles. Zhao *et al.*,<sup>22</sup> suggested that a high concentration of KOH in the solution can lead to selective adsorption of the hydroxyl anions to certain planes of the crystal, which slows down considerably their growth process. Therefore, the presence of these ions can affect the relative stabilities of the different crystal surfaces. The inversion of the nature of the inequality  $\gamma(011)/\gamma(001) > \sqrt{2}$ , which already lies close to  $\sqrt{2}$ , will cause the (011) plane to show up in the morphology.

### 3.1.2 Scanning tunnelling microscopy images simulation.

From the optimised structures of the planes and terminations that are expressed in the morphology, *i.e.* termination A of (001) and terminations A and B of (111) surfaces, we have derived the topographical STM images. These images provide information about the spatial distribution of the valence band states in the vicinity of the Fermi energy ( $E_F$ ). The above is particularly useful for systems where atoms (in our case O atoms) can be added or removed from many different positions on the surface. Modelled STM images may help to clarify experimental ones by direct comparison, for instance to identify between the two possible terminations of (111) surface, whose surface energies are very close, and also to validate the most stable termination of the (001) surface. The model also avoids any external perturbations, like the electric field of an STM experimental tip, which can influence the position of atomic species adsorbed on a surface.<sup>96</sup>

The STM images in Fig. 4 are calculated on pristine Fe<sub>3</sub>O<sub>4</sub>(001) and (111) surfaces. Fig. 4(a) shows the STM image of the Fe<sub>3</sub>O<sub>4</sub>(001) surface, termination A, acquired at a distance ( $d$ ) of 1.90 Å to the tip and at a density ( $\rho$ ) of 0.0059 e Å<sup>-3</sup>. This image resolves the protruding 2-coordinated Fe<sub>A</sub> as the brightest spots with  $(\sqrt{2} \times \sqrt{2})R45^\circ$  symmetry. The O ions from the layer below are also clearly well-defined circles forming rows along the [110] direction and with cubic packing. The STM image of termination A of the (001) surface does not show the atomic positions of the Fe<sub>B</sub> placed in the same layer as the O ions due to their low partial charges at this bias. We observed the reproduction of the Fe<sub>A</sub> ions in the same symmetry in the STM image obtained from annealed Fe<sub>3</sub>O<sub>4</sub> at 623 K.<sup>28</sup>



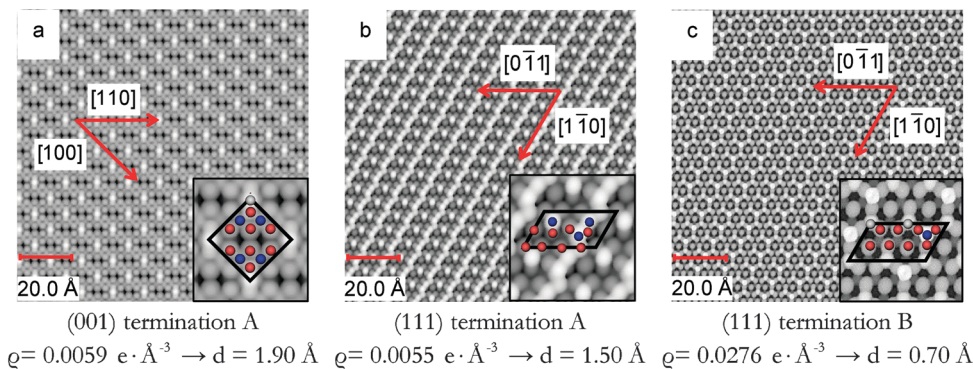


Fig. 4 Simulated STM images of (a) termination A of (001), (b) termination A of (111) and (c) termination B of (111) surfaces obtained using a bias of  $-2.5$  eV. Density ( $\rho$ ) and tip distance ( $d$ ) are also indicated. Insets show enlargements of the STM images. In the inset, Fe<sub>A</sub> ions are in grey, Fe<sub>B</sub> ions are in blue and O ions are in red.

The STM image of the Fe<sub>3</sub>O<sub>4</sub>(111) surface termination A is shown in Fig. 4(b) acquired at a density of  $0.0055 \text{ e} \text{ \AA}^{-3}$  and a distance of  $1.50 \text{ \AA}$  to the tip. The image resolves the protruding Fe<sub>B</sub> as the brightest spots along rows in the  $[1\bar{1}0]$  direction and as dots in between these rows. The undulation of the rows is due to the  $0.25 \text{ ML}$  of O atoms in the 2nd layer that have moved towards the surface after minimization. From the modelled STM, we can even observe the rhombohedral packing of the sub-layer O ions.

The last STM image in Fig. 4(c) corresponds to termination B of the Fe<sub>3</sub>O<sub>4</sub>(111) surface obtained with a density of  $0.0276 \text{ e} \text{ \AA}^{-3}$  and the tip at  $0.70 \text{ \AA}$  from the highest atom. The image acquired resolves the protruding Fe<sub>B</sub> as the brightest spots in the STM image with a  $p(1 \times 2)$  symmetry and the Fe<sub>A</sub> ions from the layer below which are always bonded to three O atoms immediately underneath. This atomic arrangement forms a pattern of incomplete hexagons (with Fe atom vacancies in one vertex of the imaginary hexagon) which can be seen as a thermally equilibrated structure with vacancies evenly distributed. Details of the layers further below are also visible in our STM image. Experimental studies of the Fe<sub>3</sub>O<sub>4</sub>(111) surface<sup>37</sup> have shown that among the two different terminations considered there, the one with  $0.50 \text{ ML}$  of Fe atoms is more stable than the one with  $0.75 \text{ ML}$  of Fe atoms and  $0.25 \text{ ML}$  of O atoms, agreeing well with our model of termination B of the (111) surface, whose simulated STM is shown in Fig. 4(c). The calculated vertical distance between the Fe<sub>A</sub> in the vertex of the hexagon and the O ion in its centre is  $0.50 \text{ \AA}$ , which also agrees well with the value reported experimentally,  $0.5 \text{ \AA}$ .<sup>37</sup> This experimental termination shows regions with full hexagons and others with incomplete hexagons (due to Fe vacancies). This atomic rearrangement may be a consequence of the high temperatures to which the surface was exposed.

### 3.2 Redox behaviour

We have studied the redox properties of the most stable terminations, A and B, of the Fe<sub>3</sub>O<sub>4</sub>(001) and (111) surfaces, respectively, by comparing the surface free energies corresponding to different O to Fe ratios at the surface. We maintained the

number of Fe atoms in the slab as in the stoichiometric surface, but we modified the number of O atoms in the top layer by  $\Gamma$  (given by eqn (5)), as we were interested in studying the effect of different temperature and oxygen pressure on the stoichiometric non-dipolar surfaces. Because of the size of our supercells, and assuming that O atoms occupy bulk-like positions around the surface Fe atoms, 17 values of  $\Gamma$  are possible if we constrain the calculations to a maximum of one ML of adatoms or vacancies. However, due to the complexity of the (001) and (111) surfaces and in order to reduce the number of  $\Gamma$  to small values that reflect realistic  $\mu_{\text{O}}$ , we have used only five values of  $\Gamma$ :  $\Gamma = 0$  is the stoichiometric surface,  $\Gamma = +1, +2$  are the partially oxidized surfaces, and  $\Gamma = -1, -2$  are the partially reduced surfaces. We have represented all of them schematically in Fig. 5.

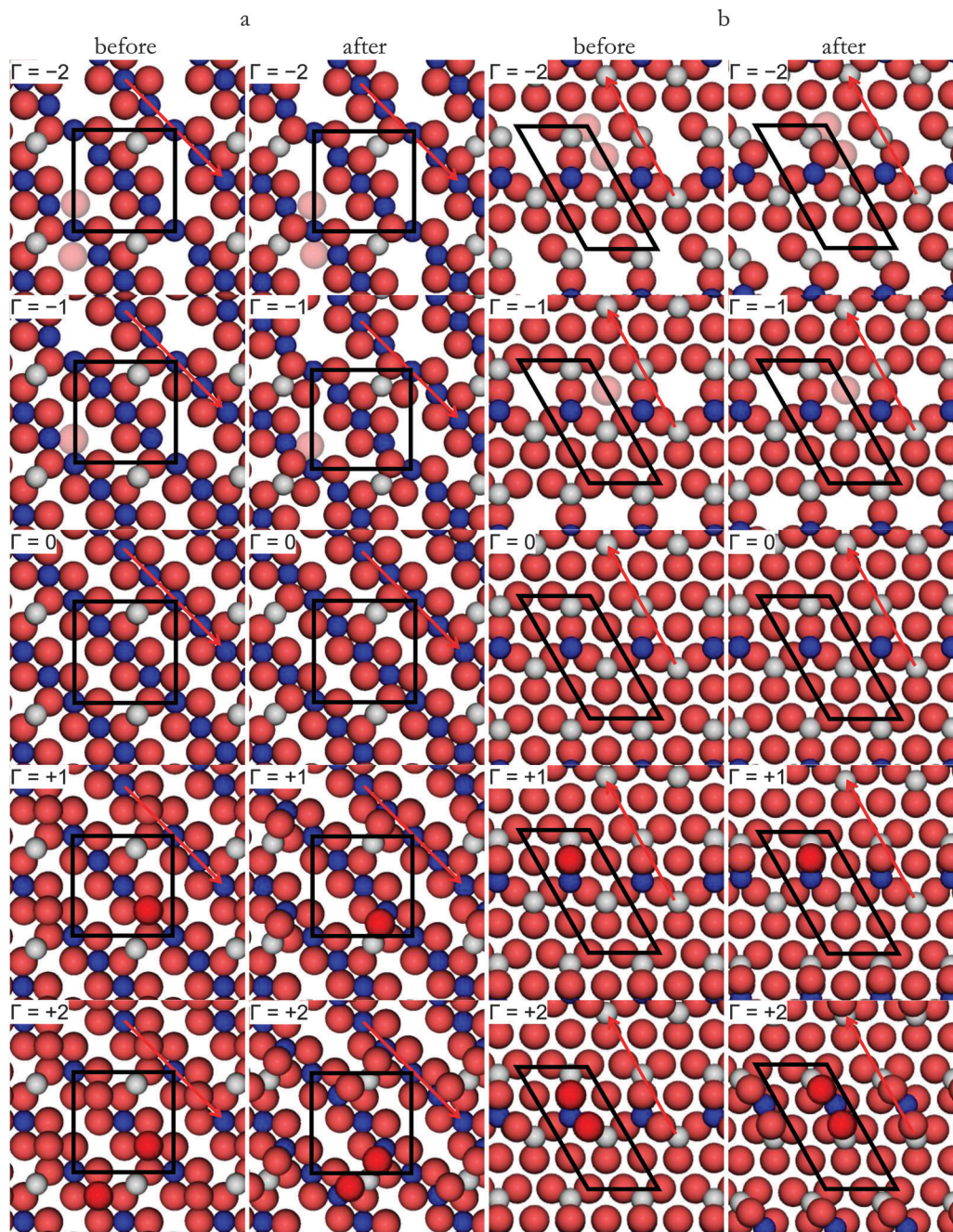
**3.2.1 Reduction of the (001) surface.** We discuss the first reduction process  $\Gamma = -1$  by removing one O atom at the top surface of the slab, which leads to a  $0.125 \text{ ML}$  of O vacancies, with a vacancy formation energy ( $E_{\text{vac}}$ ) calculated as

$$E_{\text{vac}} = \frac{E_{\text{O}_2}}{2} + E_{\text{slab},r}^{\Gamma=i-1} - E_{\text{slab},r}^{\Gamma=i} \quad (7)$$

where  $i$  takes values 0 and  $-1$  in the first and second reduction respectively. At the surface there are three different types of O depending on the distance to the protruding 2-coordinated Fe<sub>A</sub> ion, see Fig. 5(a). Thus, the energy required to remove the first O from the surface is  $2.60 \text{ eV}$  for the atom furthest removed from this Fe<sub>A</sub> (see Fig. 5(a) for  $\Gamma = -1$ ) and  $3.28 \text{ eV}$  for the one at intermediate distance. The vacancy created at the third type of O position has an even bigger energy and is therefore very unlikely. The comparison of these energies with the vacancy formation energy in the Fe<sub>3</sub>O<sub>4</sub> bulk ( $2.12 \text{ eV}$ ), suggests that under thermodynamic equilibrium any surface vacancies will migrate towards the bulk, a phenomenon that has also been observed to occur in another transition metal oxide VO<sub>2</sub>.<sup>92</sup> The tendency of the vacancy to migrate towards the bulk might seem contradictory with the fact that surface oxygen has a lower coordination number than bulk oxygen. However, this can be rationalized in terms of the oxygen vacancy-containing bulk material undergoing a different degree of relaxation than the







**Fig. 5** Top view of the schematic representation of the  $\text{Fe}_3\text{O}_4$  before and after relaxation; (column a) contains (001) and (column b) contains (111) surfaces, both with different  $\Gamma$ . Stoichiometric ( $\Gamma = 0$ ); partially reduced ( $\Gamma = -1, -2$ ) and partially oxidized ( $\Gamma = +1, +2$ ).  $\text{Fe}_A$  ions are in grey,  $\text{Fe}_B$  ions are in blue and O ions are in red, removed O ions are in pale red and added O atoms are in dark red. Only the closest defects are highlighted indicating their relative position, while all of them are shown. The arrows in (a) and (b) indicate the [110] and [011] directions respectively. Black lines indicate the surface unit cell.

oxygen vacancy in the surface slab, thereby driving the creation of the oxygen vacancy in the bulk.

We proceed with the second reduction of  $\text{Fe}_3\text{O}_4(001)$  leading to  $\Gamma = -2$ . We removed an O located in the pristine row along the [110] direction, see Fig. 5(a) for  $\Gamma = -2$ , which is at intermediate distance to  $\text{Fe}_A$ . This second vacancy is 3.23 eV less favourable than the previous state but it is just more likely than removing a more distant O ion from the row where the vacancy is now

being created, 3.31 eV. This indicates that although the first vacancy is created preferentially in a position far away from the 2-coordinated  $\text{Fe}_A$ , the second reduction might lead to a vacancy in the following O row at an intermediate distance from  $\text{Fe}_A$ . As the energies to create the second vacancy in the two positions already described are within the DFT error, it might also be possible to find vacancies in the O positions further away from the row where the vacancy is now being created.





We have characterised the  $\Gamma = -1$  surface by means of a Bader analysis and compared the atomic charges with those on the pristine surface. The positive charge of the protruding  $\text{Fe}_A$  ion was increased by a negligible amount ( $<0.05 e^-$ ), where this small variation can be accounted for by the defect that was created at the farthest O location. The surface  $\text{Fe}_B$  ions, however, are reduced, especially the ones closest to the vacancy with a variation in charge of  $0.25\text{--}0.37 e^-$ . This can be interpreted in terms of the number of O ions directly coordinated to the  $\text{Fe}_B$  ions, see Fig. 5(a) for  $\Gamma = -1$ , where just over 80% of the electron density is transferred to the  $\text{Fe}_B$  ions after removing the O atoms.

**3.2.2 Reduction of the (111) surface.** We have also explored different positions for the creation of the O ( $\Gamma = -1$ ) vacancies in the  $\text{Fe}_3\text{O}_4(111)$  surface to find the lowest-energy configuration for this particular surface. We found that the process is thermodynamically even more unfavourable than on the (001) surface by 0.24 eV. The most likely vacancy is created in the centre of an incomplete Fe-hexagon, see Fig. 5(b) for  $\Gamma = -1$ . To remove an O atom coordinated to the 3-coordinated  $\text{Fe}_A$  (opposite to the missing Fe in the incomplete hexagon) requires an energy of 3.56 eV. As in the (001) surface, any vacancy created in the (111) surface will be thermodynamically prone to migrate towards the bulk.

Creating a second vacancy among the atoms coordinated to the 3-coordinated  $\text{Fe}_A$ , Fig. 5(b) for  $\Gamma = -2$  costs 3.45 eV, which is less costly by 0.19 eV than removing the left O within the hexagon. These energies provide information about the consecutive reduction mechanism, where the first O vacancy is created in the centre of the incomplete Fe-hexagons and the next in one of the atom positions coordinated to the 3-coordinated  $\text{Fe}_A$ .

The Bader analysis indicates that upon vacancy formation on the  $\Gamma = -1$  surface, charge transfer on the  $\text{Fe}_A$  is negligible and the protruding 3-coordinated  $\text{Fe}_B$  is only slightly reduced. However, the  $\text{Fe}_B$  ions whose charge is affected more are those in the 4th atomic layer (see Fig. 2) below the removed O atom to which they were previously directly coordinated. Altogether, the charge on those three  $\text{Fe}_B$  is reduced by  $\sim 0.89 e^-$ , *i.e.* they have accepted 78.5% of the electron density previously held by the removed O.

**3.2.3 Oxidation of the (001) surface.** Another process we have studied is the surface oxidation by adsorption of one O atom leading to 0.125 ML of adatoms ( $\Gamma = +1$ ). This process involves an adsorption energy per adatom derived from the equation,

$$E_{\text{ads}} = E_{\text{slab}}^{\Gamma=j+1} - E_{\text{slab}}^{\Gamma=j} - \frac{E[\text{O}_2]}{2} \quad (8)$$

(where  $j$  takes values 0 and +1 in the first and second oxidation respectively). For  $j = 0$ ,  $E_{\text{ads}}$  is calculated at  $-1.87$  eV. We considered that the O adatom is located similarly to the bulk structure, interacting simultaneously with the protruding 2-coordinated  $\text{Fe}_A$  and one of the 5-coordinated surface  $\text{Fe}_B$ , see Fig. 5(a) for  $\Gamma = +1$ . Other configurations, like the one with the O adatom interacting only atop the protruding 2-coordinated  $\text{Fe}_A$ , release less energy per adatom,  $-1.14$  eV. The bond distance

between the added O atoms and the Fe ions ( $1.87 \text{ \AA}$  for  $\text{Fe}_A$  and  $1.83 \text{ \AA}$  for  $\text{Fe}_B$ ) is shorter than the first neighbour distance to both types of Fe in the bulk ( $1.89 \text{ \AA}$  for  $\text{Fe}_A$  and  $2.05 \text{ \AA}$  for  $\text{Fe}_B$ ),<sup>15</sup> as is expected due to contraction of the top atomic surface layers after relaxation. The strongly exothermic adsorption suggests a favourable oxidation process, but as it is affected by  $\mu_{\text{O}}$ , its evaluation requires a complete analysis of the gas partial pressure in equilibrium with the surface.

Adding a second O atom ( $\Gamma = +2$ ) is also an exothermic process, releasing 0.96 eV per adatom. The second O atom preferentially coordinates the protruding  $\text{Fe}_A$  and a 5-coordinated  $\text{Fe}_B$ , forming another O bridging structure collinear with the  $[\bar{1}10]$  direction, Fig. 5(a) for  $\Gamma = +2$ . As for  $\Gamma = +1$ , the top atomic contraction leads to short Fe–O distances,  $1.85 \text{ \AA}$ . Another conformation for the second O adsorption is coordinating equivalent atoms but forming a V-shaped structure, leading to a weaker adsorption ( $E_{\text{ads}} = -0.80$  eV).

At this point, it is worth mentioning that although we started from the ideal terminations similar to the bulk when we added the first and second oxygen atom, this did not prevent them to relax to a different position. In fact, we can see in Fig. 5(a) for  $\Gamma = +1$  (and +2), that after surface relaxation, the added oxygen has moved from its bulk site to another position, closer to the protruding  $\text{Fe}_A$ . This finding agrees with the work of Reuter and Scheffler,<sup>90</sup> who found for  $\text{RuO}_2(110)$  that terminations at positions different from the bulk can be important in non-stoichiometric compositions.

The Bader analysis on the density of the ( $\Gamma = +1$ ) oxidised (001) surface shows the oxidation of the top layer  $\text{Fe}_B$  by  $0.60 e^-$  while the protruding 2-coordinated  $\text{Fe}_A$  ion only donates  $0.04 e^-$  to the newly added O atom. Hence, the O adatom gains  $1.00 e^-$  mainly from the surface metals whereas the charge of the surface anions (all of them more negative than the adatom) change by about  $0.02 e^-$ .

**3.2.4 Oxidation of the (111) surface.** On the (111) surface, the adsorption of one O atom ( $\Gamma = +1$ ) led to the formation of a bridging structure between the protruding  $\text{Fe}_B$  and one of the three closest 3-coordinated  $\text{Fe}_A$  (see Fig. 5(b) for  $\Gamma = +1$ ) releasing 3.00 eV. A less stable configuration is the one where the O-adatom is sitting atop the protruding  $\text{Fe}_B$  providing an  $E_{\text{ads}}$  of  $-2.04$  eV.

The addition of a second O-adatom coordinating the protruding  $\text{Fe}_B$  and one of the other two closest unoccupied 3-coordinated  $\text{Fe}_A$  releases 2.30 eV; see the schematic representation in Fig. 5(b) for  $\Gamma = +2$ . During the optimisation, this second oxygen pushes the protruding 3-coordinated  $\text{Fe}_B$  out of its equilibrium position in the stoichiometric surface, thereby forming a  $\text{Fe}_A\text{--O--Fe}_B\text{--O--Fe}_A$  row of atoms along the  $[0\bar{1}1]$  direction. The equilibrium bond lengths, Fe<sub>A</sub>–O and Fe<sub>B</sub>–O are  $1.86 \text{ \AA}$  and  $1.80 \text{ \AA}$  respectively, which compares well with values reported before (between  $1.80\text{--}1.85 \text{ \AA}$ ) for the Fe–O distance at the  $\text{Fe}_3\text{O}_4(111)$  surface.<sup>40</sup> In the next most favourable conformation the second O is located atop one surface O coordinating only the  $\text{Fe}_A$ , but this process is endothermic by 0.43 eV. The calculations thus show that both the first and second adsorbed O preferentially coordinate the protruding 3-coordinated  $\text{Fe}_B$  and



two of its Fe<sub>A</sub> neighbours with a resulting bridging structure in the [011] direction.

Unlike the (001) surface, where the added oxygen atoms moved during the energy minimization, in the (111) we observed instead that the protruding Fe<sub>B</sub> ion moved from its bulk position after the addition of two defects ( $\Gamma = +2$ ), see Fig. 5(b). This validates in our methodology the possibility of exploring non-bulk-like relaxed positions for any atom in the surface of our slab, as long as all non-equivalent bulk-like positions for the defects are carefully investigated.

The Bader analysis indicates that in the preferred structure for  $\Gamma = +1$ , the adatom gains 1.04 e<sup>-</sup>, where the charge of the other surface O atoms decreased as little as in the (001) surface. Amongst the two Fe ions coordinated to the added O atom, Fe<sub>B</sub> increases its charge by 0.08 e<sup>-</sup>, but Fe<sub>A</sub> by 0.39 e<sup>-</sup>. The charge on other surface Fe<sub>A</sub> and Fe<sub>B</sub> ions upon addition of the O atom changed by an average of 0.03 e<sup>-</sup> and -0.01 e<sup>-</sup> respectively.

### 3.3 Temperature and pressure effects

In this section, we discuss the thermodynamics of the redox processes at the (001) and (111) surfaces as a function of temperature and O<sub>2</sub> partial pressure in the gas phase. We express these macroscopic parameters by  $\mu_{\text{O}}$ .

In Fig. 6(a), we have plotted  $\mu_{\text{O}}$  in terms of temperature and the log  $p$ , along abscissas for easy comparison with the plots in Fig. 6(b) and (c). All the information used for the construction of Fig. 6(a) comes from experiment<sup>88</sup> and is independent from the calculations (see Computational methods section). Variations in  $T$  and  $p$  are necessary to modify the value of  $\mu_{\text{O}}$  as required and to reflect different reducing or oxidising conditions. For example, the oxygen chemical potential is -0.3 eV (which is a typical oxidising value) at ambient conditions, *i.e.* at the intercept of  $T = 298.15$  K and  $p = 0.21$  bar, while more reducing conditions (lower values of  $\mu_{\text{O}}$ ) can be achieved by increasing  $T$  while keeping the pressure constant (*i.e.* horizontal solid line in Fig. 6(a)).

The area between the two vertical dashed lines ( $\mu_{\text{O}}$  from -3.13 to -2.44 eV) in Fig. 6 corresponds to the conditions where the Fe<sub>3</sub>O<sub>4</sub> bulk material is thermodynamically stable with respect to both FeO and Fe<sub>2</sub>O<sub>3</sub> bulk. We have derived these conditions ( $\mu_{\text{O}}$ ) from the experimental formation enthalpy of the three oxides<sup>93</sup> and their increasing oxidation from FeO to Fe<sub>2</sub>O<sub>3</sub>, see eqn (9). Under normal conditions, Fe<sub>2</sub>O<sub>3</sub> is the thermodynamically stable bulk phase, while the synthesis of Fe<sub>3</sub>O<sub>4</sub> requires high temperatures or a low pressure of O<sub>2</sub> (which ultimately can lead to FeO).

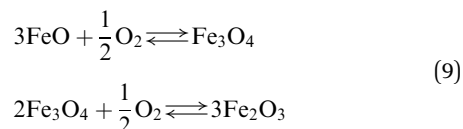


Fig. 6(b) and (c) show the variation of the surface free energies ( $\Delta\sigma$ ) of each surface compositions *versus*  $\mu_{\text{O}}$ . Note that we have only used the most stable configuration for  $\Gamma = -2, -1, 0, +1, +2$ . Further degrees of reduction/oxidation ( $\Gamma = \pm 3$ ) could also be investigated but instead of exploring many different positions where to remove or add the O atoms, we have linearly

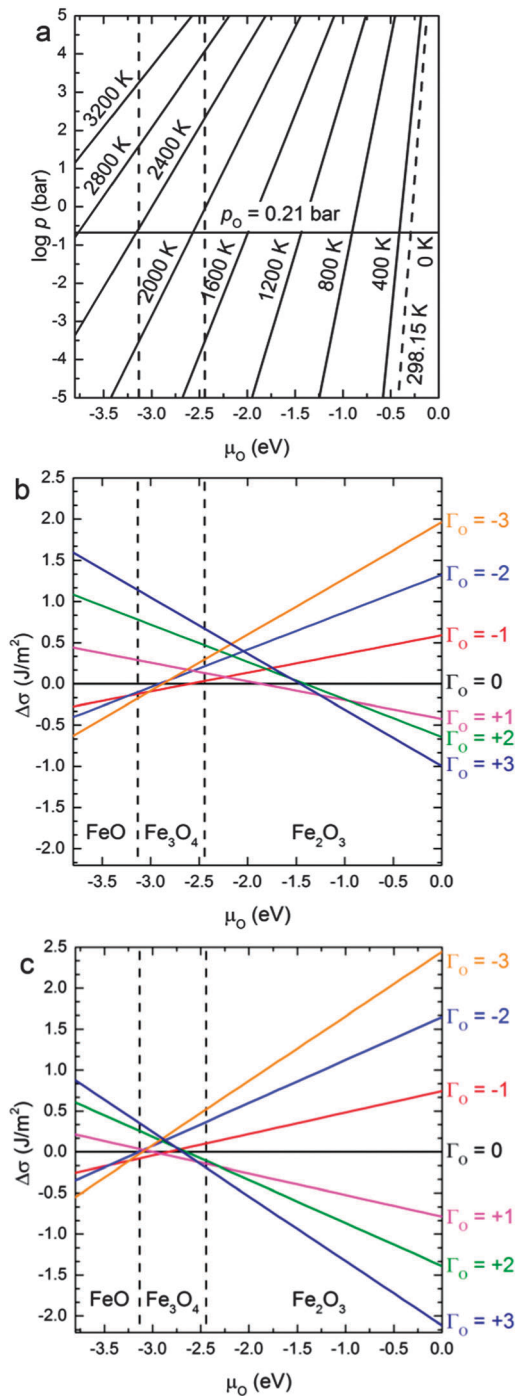


Fig. 6 (a)  $\mu_{\text{O}}$  in the gas phase as a function of the temperature and the logarithm of the oxygen partial pressure and relative surface free energies ( $\Delta\sigma$ ) for the Fe<sub>3</sub>O<sub>4</sub> (b) (001) and (c) (111) surfaces as a function of the oxygen chemical potential ( $\mu_{\text{O}}$ ). The areas corresponding to  $\mu_{\text{O}}$  smaller than -3.13 eV, bigger than -2.44 eV and between these two values represent the approximate conditions under which bulk FeO, Fe<sub>2</sub>O<sub>3</sub> and Fe<sub>3</sub>O<sub>4</sub> respectively are the stable oxides.

fitted the intercept of the linear regressions in Fig. 6 as a function of  $\Gamma$  for inferring the intercepts of further oxidation/reduction of these surfaces. We have limited this treatment to three defects, as a higher number can lead to the formation of



molecular oxygen in the case of oxidation or a new oxide phase in the case of reduction.

At  $\mu_{\text{O}} = -0.3$  eV (ambient conditions), the ( $\Gamma = +3$ ) oxidation of the  $\text{Fe}_3\text{O}_4(001)$  surface will take place, see Fig. 6(b). For the conditions where bulk  $\text{Fe}_3\text{O}_4$  is the most stable oxide, the ( $\Gamma = +3$ ) oxidized (001) remains the most stable surface up to  $\mu_{\text{O}} = -1.25$  eV, from where the surface experiences a progressive reduction. In the early stages of this reduction, the unit cell loses two O atoms and remains so until  $\mu_{\text{O}} = -1.85$  eV. Beyond that chemical potential and until  $\mu_{\text{O}} = -2.60$  eV, which is just beyond the conditions in which the phase transition from  $\text{Fe}_2\text{O}_3$  to  $\text{Fe}_3\text{O}_4$  takes place, the most stable surface is the stoichiometric one. At lower values of  $\mu_{\text{O}} = -3.00$  eV (but still within the conditions in which  $\text{Fe}_3\text{O}_4$  is the most stable phase), the ( $\Gamma = -3$ ) reduced surface is the favoured system, until reaching the conditions where the reduced bulk phase of FeO is the most stable oxide. A recent publication by Nie *et al.*<sup>100</sup> reports that the  $\text{Fe}_3\text{O}_4(001)$  surface is oxidised under exposure to  $4 \times 10^{-9}$  bar of oxygen at 923 K. They used low-energy electron microscopy (LEEM) and Raman spectroscopy to prove that  $\text{Fe}_3\text{O}_4$  grows at the expenses of Fe ions migrating from the bulk towards the surface. The Fe ion vacancies in the bulk, in turn, transform it into  $\alpha\text{-Fe}_2\text{O}_3$  (hematite), which is the equilibrium iron oxide phase at the temperature and pressure of the experiment. Our results hence agree well with these experimental findings, although they are close to the limit in which the stoichiometric surface is the most stable one. The experimental conditions described above correspond to  $\mu_{\text{O}} = -1.75$  eV according to eqn (6), a value at which  $\text{Fe}_3\text{O}_4(001)$  surface is prone to suffer oxidation (see Fig. 6(b)), by adding one O atom per surface unit cell around the protruding  $\text{Fe}_A$ . Our results, however, agree partially with those reported in a DFT study by Pentcheva *et al.*<sup>29</sup> as those authors found that the modified non-stoichiometric polar bulk-like  $\text{Fe}_3\text{O}_4(001)$  surface ( $\text{Fe}_B\text{-O}$  layer) is the most stable under any chemical potential. However, the surface proposed by Pentcheva *et al.* is a generic oxidised (001) surface, created from a bulk-like termination, whereas our surface is gradually oxidised or reduced. However, regardless of terminations and reconstructions, we also predict our non-dipolar surface to be ( $\Gamma = +3$  and  $+1$ ) oxidized up to  $\mu_{\text{O}} = -1.85$  eV, but from this value of chemical potential onwards, our results predict a gradual reduction, which no longer agrees with the work by Pentcheva *et al.* as they predict the same oxidized surface for any value of  $\mu_{\text{O}}$ .

The redox behaviour of the  $\text{Fe}_3\text{O}_4(111)$  surface is shown in Fig. 6(c). It indicates that the redox properties of the (111) surface are similar to the (001) surface, although the oxidized character extends to lower chemical potentials. The surface tends to be ( $\Gamma = +3$ ) oxidised under the condition where  $\text{Fe}_2\text{O}_3$  is the most stable phase and up to  $\mu_{\text{O}} = -2.45$  eV, which is within the region where  $\text{Fe}_3\text{O}_4$  is the thermodynamically most stable iron oxide. From here, the surface loses two O atoms for a very short range of chemical potential, until  $\mu_{\text{O}} = -2.95$  eV, from where the surface loses a further two more O atoms, becoming now reduced up to  $\mu_{\text{O}} = -3.25$  eV. From this final value of the chemical potential, the surface becomes reduced ( $\Gamma = -3$ ). In a previous DFT +  $U$  study,<sup>42</sup> Kiejna *et al.* studied the redox properties of the  $\text{Fe}_3\text{O}_4(111)$  surface. They only studied the

non-stoichiometric dipolar bulk-like terminations and found that the  $\text{Fe}_{A1}$  surface, which corresponds with a generic oxidized one, is the most stable one up to  $\mu_{\text{O}} = -2.6$  eV, from which point their surfaces started to reduce gradually. Although we cannot make a direct comparison of our results due to the different terminations considered in both works, owing to our gradual redox processes, our results show the same trend.

Comparing both ( $\Gamma = +3$ ) oxidised surfaces, the (111) is lower in energy than the (001) for the whole  $\mu_{\text{O}}$  scale considered. Therefore the (111) surface will remain oxidised even at  $\mu_{\text{O}}$  where  $\text{Fe}_3\text{O}_4(001)$  is not. We suggest then, from Fig. 6, that under the conditions in which the bulk  $\text{Fe}_3\text{O}_4$  is the most stable oxide, the phase transformation of the reduction of  $\text{Fe}_3\text{O}_4$  towards FeO will start from the (001) surface. On the other hand,  $\text{Fe}_3\text{O}_4$  oxidation to  $\text{Fe}_2\text{O}_3$  would take place initially on the (111).

## 4 Conclusions

In this paper, we have modelled three different surface orientations of  $\text{Fe}_3\text{O}_4$  crystals by using DFT methods within the GGA +  $U$  approximation. We have investigated the stabilities of their multiple (reconstructed) non-dipolar stoichiometric surface terminations and studied the redox properties of the most prominent surfaces. We have modified the redox conditions by creating O vacancies or adding O atoms to the most stable non-dipolar stoichiometric surface termination, under a wide range of chemical potentials, including ambient conditions and those conditions where bulk  $\text{Fe}_3\text{O}_4$  is the thermodynamically most stable oxide. In the initial stages of oxidation, the excess O atoms form bridging structures with the Fe ions at the surface, and in particular the Fe ions protruding from the surface. We found that some oxidised (non-stoichiometric) structures relaxed in such a way that it broke the bulk-like termination.

We conclude that the Fe-terminated (001) and (111) planes are the most stable  $\text{Fe}_3\text{O}_4$  surfaces, in agreement with previous experiments as shown by STM images. The equilibrium morphology of  $\text{Fe}_3\text{O}_4$  was found to be cubic with truncated corners, which means that (001) and (111) are the main surfaces exposed in the crystals. Although both (001) and (111) surfaces will be oxidized under ambient conditions, both surfaces suffer a gradual reduction, that starts at lower chemical potentials for the (001) surface including the stoichiometric plane.

The reduction of the (001) and (111) surfaces is thermodynamically favourable at the low end of the  $\mu_{\text{O}}$  values in the region where  $\text{Fe}_3\text{O}_4$  is the most stable oxide. We found that, in both cases, the O vacancies are likely to migrate towards the bulk, thereby changing the phase structure.

## Acknowledgements

We would like to thank Thomas A. Mellan for useful discussions. We acknowledge the Engineering & Physical Sciences Research Council (grant EP/G036675) for funding. *Via* our membership of the UK's HPC Materials Chemistry Consortium, which is funded by EPSRC (EP/L000202), this work made use of the





facilities of HECToR, the UK's national high-performance computing service, which is provided by UoE HPCx Ltd at the University of Edinburgh, Cray Inc and NAG Ltd, and funded by the Office of Science and Technology through EPSRC's High End Computing Programme. The authors also acknowledge the use of the UCL Legion High Performance Computing Facility (Legion@UCL), and associated support services, in the completion of this work. DS-C thanks UCL for a Graduate Global Excellence Award and an Overseas Research Scholarship from the UCL Industrial Doctorate Centre in Molecular Modelling and Materials Science. A Roldan is grateful to the Ramsay Memorial Trust and University College London for the provision of a Ramsay Fellowship.

## References

- W. Weiss and W. Ranke, *Prog. Surf. Sci.*, 2002, **70**, 1–151.
- S.-S. Chen and Updated by Staff, *Kirk-Othmer Encyclopedia of Chemical Technology*, John Wiley & Sons, Inc., 2006.
- D. H. James and W. M. Castor, *Ullmann's Encyclopedia of Industrial Chemistry*, Wiley-VCH Verlag GmbH & Co. KGaA, 2011, pp. 529–544.
- J. S. Campbell, P. Craven and P. W. Young, *Catalyst Handbook*, Wolfe Scientific Books, 1970, pp. 97–126.
- D. G. Rethwisch, J. Phillips, Y. Chen, T. F. Hayden and J. A. Dumesic, *J. Catal.*, 1985, **91**, 167–180.
- J. C. Gonzalez, M. G. Gonzalez, M. A. Laborde and N. Moreno, *Appl. Catal.*, 1986, **20**, 3–13.
- S. Li, G. D. Meitzner and E. Iglesia, *J. Phys. Chem. B*, 2001, **105**, 5743–5750.
- G. C. Bond, *Heterogeneous Catalysis; Principles and Applications*, Clarendon Press, Oxford, 1974.
- G. A. Somorjai and M. Salmeron, in *Homogeneous and Heterogeneous Photocatalysis*, ed. E. Pelizzetti and N. Serpone, D. Reidel Publ. Co., Dordrecht, The Netherlands, NATO ASI Series C, 1986, vol. 174, pp. 445–478.
- S. Topham, in *Catalysis: Science and Technology*, ed. J. R. Anderson, Springer, Berlin, 1985, vol. 7, pp. 1–50.
- G. W. Bridger and C. B. Snowden, *Catalyst Handbook*, Wolfe Scientific Books, 1970, pp. 126–147.
- R. M. Cornell and U. Schwertmann, *The Iron Oxides*, Wiley-VCH Verlag GmbH & Co. KGaA, Weinheim, FRG, 2nd edn, 2003.
- F. dos Santos Coelho, J. D. Ardisson, F. C. C. Moura, R. M. Lago, E. Murad and J. D. Fabris, *Chemosphere*, 2008, **71**, 90–96.
- Z. Zhang and S. Satpathy, *Phys. Rev. B: Condens. Matter Mater. Phys.*, 1991, **44**, 13319–13331.
- A. Roldan, D. Santos-Carballal and N. H. de Leeuw, *J. Chem. Phys.*, 2013, **138**, 204712.
- R. J. Hill, J. R. Craig and G. V. Gibbs, *Phys. Chem. Miner.*, 1979, **4**, 317–339.
- J. P. Wright, J. P. Attfield and P. G. Radaelli, *Phys. Rev. B: Condens. Matter Mater. Phys.*, 2002, **66**, 214422.
- U. Lins, C. N. Keim, F. F. Evans, M. Farina and P. R. Buseck, *Geomicrobiol. J.*, 2007, **24**, 43–50.
- D. Faivre and D. Schüler, *Chem. Rev.*, 2008, **108**, 4875–4898.
- J. P. Bradley, R. P. Harvey and H. Y. McSween Jr., *Geochim. Cosmochim. Acta*, 1996, **60**, 5149–5155.
- D. S. McKay, E. K. Gibson Jr., K. L. Thomas-Keppta, H. Vali, C. S. Romanek, S. J. Clemett, X. D. F. Chillier, C. R. Maechling and R. N. Zare, *Science*, 1996, **273**, 924–930.
- L. Zhao, H. Zhang, Y. Xing, S. Song, S. Yu, W. Shi, X. Guo, J. Yang, Y. Lei and F. Cao, *Chem. Mater.*, 2008, **20**, 198–204.
- D. Faivre, N. Menguy, F. Guyot, O. Lopez and P. Zuddas, *Am. Mineral.*, 2005, **90**, 1793–1800.
- S. A. Chambers, S. Thevuthasan and S. A. Joyce, *Surf. Sci.*, 2000, **450**, L273–L279.
- A. V. Mijiritskii and D. O. Boerma, *Surf. Sci.*, 2001, **486**, 73–81.
- B. Stanka, W. Hebenstreit, U. Diebold and S. A. Chambers, *Surf. Sci.*, 2000, **448**, 49–63.
- F. C. Voogt, T. Fujii, P. J. M. Smulders, L. Niesen, M. A. James and T. Hibma, *Phys. Rev. B: Condens. Matter Mater. Phys.*, 1999, **60**, 11193–11206.
- G. S. Parkinson, Z. Novotný, P. Jacobson, M. Schmid and U. Diebold, *Surf. Sci.*, 2011, **605**, L42–L45.
- R. Pentcheva, F. Wendler, H. L. Meyerheim, W. Moritz, N. Jedrecy and M. Scheffler, *Phys. Rev. Lett.*, 2005, **94**, 126101.
- M. Fonin, R. Pentcheva, Y. S. Dedkov, M. Sperlich, D. V. Vyalikh, M. Scheffler, U. Rüdiger and G. Güntherodt, *Phys. Rev. B: Condens. Matter Mater. Phys.*, 2005, **72**, 104436.
- G. S. Parkinson, T. A. Manz, Z. Novotný, P. T. Sprunger, R. L. Kurtz, M. Schmid, D. S. Sholl and U. Diebold, *Phys. Rev. B: Condens. Matter Mater. Phys.*, 2012, **85**, 195450.
- R. Jansen, V. A. M. Brabers and H. van Kempen, *Surf. Sci.*, 1995, **328**, 237–247.
- R. Jansen, H. van Kempen and R. M. Wolf, *J. Vac. Sci. Technol., B*, 1996, **14**, 1173.
- G. Maris, O. Shklyarevskii, L. Jdira, J. G. H. Hermsen and S. Speller, *Surf. Sci.*, 2006, **600**, 5084–5091.
- G. Maris, L. Jdira, J. G. H. Hermsen, S. Murphy, G. Manai, I. V. Shvets and S. Speller, *Jpn. J. Appl. Phys.*, 2006, **45**, 2225–2229.
- G. Maris, L. Jdira, J. G. H. Hermsen, S. Murphy, G. Manai, I. V. Shvets and S. Speller, *IEEE Trans. Magn.*, 2006, **42**, 2927–2929.
- A. R. Lennie, N. G. Condon, F. M. Leibsle, P. W. Murray, G. Thornton and D. J. Vaughan, *Phys. Rev. B: Condens. Matter Mater. Phys.*, 1996, **53**, 10244–10253.
- M. Ritter and W. Weiss, *Surf. Sci.*, 1999, **432**, 81–94.
- N. Berdunov, S. Murphy, G. Mariotto and I. V. Shvets, *Phys. Rev. B: Condens. Matter Mater. Phys.*, 2004, **70**, 085404.
- G. J. Martin, R. S. Cutting, D. J. Vaughan and M. C. Warren, *Am. Mineral.*, 2009, **94**, 1341–1350.





- 41 N. Berdunov, S. Murphy, G. Mariotto and I. V. Shvets, *Phys. Rev. Lett.*, 2004, **93**, 057201.
- 42 A. Kiejna, T. Ossowski and T. Pabisiak, *Phys. Rev. B: Condens. Matter Mater. Phys.*, 2012, **85**, 125414.
- 43 N. G. Condon, F. M. Leibsle, T. Parker, A. R. Lennie, D. J. Vaughan and G. Thornton, *Phys. Rev. B: Condens. Matter Mater. Phys.*, 1997, **55**, 15885–15894.
- 44 P. W. Tasker, *J. Phys. C: Solid State Phys.*, 1979, **12**, 4977–4984.
- 45 I. Kostov, *Mineralogy*, Oliver Boyd, Edinburgh, London, 1968.
- 46 R. V. Gaines, H. C. W. Skinner, E. E. Foord, B. Mason and A. Rosenzweig, *Dana's New Mineralogy: The System of Mineralogy of James Dwight and Edward Salisbury*, Wiley-Blackwell, 1997.
- 47 G. Kresse and J. Hafner, *Phys. Rev. B: Condens. Matter Mater. Phys.*, 1993, **47**, 558–561.
- 48 G. Kresse and J. Hafner, *Phys. Rev. B: Condens. Matter Mater. Phys.*, 1994, **49**, 14251–14269.
- 49 G. Kresse and J. Furthmüller, *Comput. Mater. Sci.*, 1996, **6**, 15–50.
- 50 G. Kresse and J. Furthmüller, *Phys. Rev. B: Condens. Matter Mater. Phys.*, 1996, **54**, 11169–11186.
- 51 J. P. Perdew, K. Burke and M. Ernzerhof, *Phys. Rev. Lett.*, 1997, **78**, 1396.
- 52 J. P. Perdew, K. Burke and M. Ernzerhof, *Phys. Rev. Lett.*, 1996, **77**, 3865–3868.
- 53 S. Grimme, *J. Comput. Chem.*, 2006, **27**, 1787–1799.
- 54 G. Kresse and D. Joubert, *Phys. Rev. B: Condens. Matter Mater. Phys.*, 1999, **59**, 1758–1775.
- 55 P. E. Blöchl, *Phys. Rev. B: Condens. Matter Mater. Phys.*, 1994, **50**, 17953–17979.
- 56 L. Néel, *Ann. Phys.*, 1948, **3**, 137–198.
- 57 C. G. Shull, E. O. Wollan and W. C. Koehler, *Phys. Rev.*, 1951, **84**, 912–921.
- 58 S. L. Dudarev, G. A. Botton, S. Y. Savrasov, C. J. Humphreys and A. P. Sutton, *Phys. Rev. B: Condens. Matter Mater. Phys.*, 1998, **57**, 1505–1509.
- 59 V. I. Anisimov, M. A. Korotin, J. Zaanen and O. K. Andersen, *Phys. Rev. Lett.*, 1992, **68**, 345–348.
- 60 I. de P. R. Moreira, F. Illas and R. L. Martin, *Phys. Rev. B: Condens. Matter Mater. Phys.*, 2002, **65**, 155102.
- 61 C. Loschen, J. Carrasco, K. M. Neyman and F. Illas, *Phys. Rev. B: Condens. Matter Mater. Phys.*, 2007, **75**, 035115.
- 62 L. Wang, T. Maxisch and G. Ceder, *Phys. Rev. B: Condens. Matter Mater. Phys.*, 2006, **73**, 195107.
- 63 R. Grau-Crespo, F. Corà, A. A. Sokol, N. H. de Leeuw and C. R. A. Catlow, *Phys. Rev. B: Condens. Matter Mater. Phys.*, 2006, **73**, 035116.
- 64 D. Muñoz, N. M. Harrison and F. Illas, *Phys. Rev. B: Condens. Matter Mater. Phys.*, 2004, **69**, 085115.
- 65 I. Ciofini, F. Illas and C. Adamo, *J. Chem. Phys.*, 2004, **120**, 3811–3816.
- 66 F. Illas and R. L. Martin, *J. Chem. Phys.*, 1998, **108**, 2519–2527.
- 67 F. Corà, *Mol. Phys.*, 2005, **103**, 2483–2496.
- 68 A. Baldereschi, *Phys. Rev. B: Condens. Matter Mater. Phys.*, 1973, **7**, 5212–5215.
- 69 D. J. Chadi and M. L. Cohen, *Phys. Rev. B: Condens. Matter Mater. Phys.*, 1973, **8**, 5747–5753.
- 70 H. J. Monkhorst and J. D. Pack, *Phys. Rev. B: Condens. Matter Mater. Phys.*, 1976, **13**, 5188–5192.
- 71 Z. Kąkol and J. M. Honig, *Phys. Rev. B: Condens. Matter Mater. Phys.*, 1989, **40**, 9090–9097.
- 72 M. D. Pashley, *Phys. Rev. B: Condens. Matter Mater. Phys.*, 1989, **40**, 10481–10487.
- 73 G. W. Watson, E. T. Kelsey, N. H. de Leeuw, D. J. Harris and S. C. Parker, *J. Chem. Soc., Faraday Trans.*, 1996, **92**, 433–438.
- 74 G. Makov and M. C. Payne, *Phys. Rev. B: Condens. Matter Mater. Phys.*, 1995, **51**, 4014–4022.
- 75 J. Neugebauer and M. Scheffler, *Phys. Rev. B: Condens. Matter Mater. Phys.*, 1992, **46**, 16067–16080.
- 76 R. F. W. Bader, *Atoms in Molecules: A Quantum Theory*, Oxford University Press, Oxford (UK), 1990.
- 77 G. Henkelman, A. Arnaldsson and H. Jónsson, *Comput. Mater. Sci.*, 2006, **36**, 354–360.
- 78 E. Sanville, S. D. Kenny, R. Smith and G. Henkelman, *J. Comput. Chem.*, 2007, **28**, 899–908.
- 79 W. Tang, E. Sanville and G. Henkelman, *J. Phys.: Condens. Matter*, 2009, **21**, 084204.
- 80 K. B. Wiberg and P. R. Rablen, *J. Comput. Chem.*, 1993, **14**, 1504–1518.
- 81 J. G. Ángyán, G. Jansen, M. Loss, C. Hättig and B. A. Heß, *Chem. Phys. Lett.*, 1994, **219**, 267–273.
- 82 F. De Proft, C. Van Alsenoy, A. Peeters, W. Langenaeker and P. Geerlings, *J. Comput. Chem.*, 2002, **23**, 1198–1209.
- 83 G. Wulff, *Z. Kristallogr. Mineral.*, 1901, **34**, 449–530.
- 84 J. W. Gibbs, *Collected Works*, Longman, New York, 1928.
- 85 T. G. Cooper and N. H. de Leeuw, *J. Cryst. Growth*, 2006, **294**, 137–149.
- 86 N. H. de Leeuw and T. G. Cooper, *Geochim. Cosmochim. Acta*, 2007, **71**, 1655–1673.
- 87 X.-G. Wang, W. Weiss, S. K. Shaikhutdinov, M. Ritter, M. Petersen, F. Wagner, R. Schlögl and M. Scheffler, *Phys. Rev. Lett.*, 1998, **81**, 1038–1041.
- 88 M. W. J. Chase, *NIST JANAF Thermochemical Tables*, American Chemical Society and American Institute of Physics for the National Institute of Standards and Technology, Washington DC, 1998.
- 89 R. Grau-Crespo, C. R. A. Catlow and N. H. de Leeuw, *J. Catal.*, 2007, **248**, 77–88.
- 90 K. Reuter and M. Scheffler, *Phys. Rev. B: Condens. Matter Mater. Phys.*, 2001, **65**, 035406.
- 91 R. Grau-Crespo, I. de P. R. Moreira, F. Illas, N. H. de Leeuw and C. R. A. Catlow, *J. Mater. Chem.*, 2006, **16**, 1943–1949.
- 92 T. A. Mellan and R. Grau-Crespo, *J. Chem. Phys.*, 2012, **137**, 154706.
- 93 W. M. Haynes, in *CRC Handbook of Chemistry and Physics*, ed. W. M. Haynes, CRC; London: Taylor & Francis [distributor], Boca Raton, Fla., 93rd edn, 2012.



- 94 J. Tersoff and D. R. Hamann, *Phys. Rev. B: Condens. Matter Mater. Phys.*, 1985, **31**, 805–813.
- 95 D. E. P. Vanpoucke and G. Brocks, *Phys. Rev. B: Condens. Matter Mater. Phys.*, 2008, **77**, 241308.
- 96 S. Irrera, A. Roldan, G. Portalone and N. H. de Leeuw, *J. Phys. Chem. C*, 2013, **117**, 3949–3957.
- 97 E. A. Wood, *J. Appl. Phys.*, 1964, **35**, 1306–1312.
- 98 J. R. Rustad, E. Wasserman and A. R. Felmy, *Surf. Sci.*, 1999, **432**, L583–L588.
- 99 N. Spiridis, J. Barbasz, Z. Łodziana and J. Korecki, *Phys. Rev. B: Condens. Matter Mater. Phys.*, 2006, **74**, 155423.
- 100 S. Nie, E. Starodub, M. Monti, D. A. Siegel, L. Vergara, F. El Gabaly, N. C. Bartelt, J. de la Figuera and K. F. McCarty, *J. Am. Chem. Soc.*, 2013, **135**, 10091–10098.

