

Investigating the influence of extracellular matrix and glycolytic metabolism on muscle stem cell migration on their native fibre environment

Article

Published Version

Creative Commons: Attribution 3.0 (CC-BY)

Open Access

Butera, G., Collins-Hooper, H., Mitchell, R., Makarenkova, H. P., Lasagna, E. and Patel, K. (2015) Investigating the influence of extracellular matrix and glycolytic metabolism on muscle stem cell migration on their native fibre environment. *Fibers*, 3 (3). pp. 253-264. ISSN 2079-6439 doi: <https://doi.org/10.3390/fib3030253> Available at <https://centaur.reading.ac.uk/40804/>

It is advisable to refer to the publisher's version if you intend to cite from the work. See [Guidance on citing](#).

To link to this article DOI: <http://dx.doi.org/10.3390/fib3030253>

Publisher: MDPI

All outputs in CentAUR are protected by Intellectual Property Rights law, including copyright law. Copyright and IPR is retained by the creators or other copyright holders. Terms and conditions for use of this material are defined in the [End User Agreement](#).

www.reading.ac.uk/centaur

CentAUR

Central Archive at the University of Reading

Reading's research outputs online

Article

Investigating the Influence of Extracellular Matrix and Glycolytic Metabolism on Muscle Stem Cell Migration on Their Native Fiber Environment

Gaia Butera ^{1,2}, Henry Collins-Hooper ¹, Robert Mitchell ¹, Helen P. Makarenkova ³, Emiliano Lasagna ² and Ketan Patel ^{1,*}

¹ School of Biological Sciences, University of Reading, Reading RG6 6UB, UK; E-Mails: gaia.butera92@gmail.com (G.B.); h.d.collins-hooper@reading.ac.uk (H.C.-H.); r.d.mitchell@pgr.reading.ac.uk (R.M.)

² Department of Agricultural, Food and Environmental Sciences, University of Perugia, Perugia I-06121, Italy; E-Mail: emiliano.lasagna@unipg.it

³ Department of Cell and Molecular Biology, Scripps Research Institute, La Jolla, CA 92037, USA; E-Mail: hmakarenk@scripps.edu

* Author to whom correspondence should be addressed; E-Mail: ketan.patel@reading.ac.uk; Tel.: +44-118-378-8079.

Academic Editor: Jingwei Xie

Received: 2 June 2015 / Accepted: 8 July 2015 / Published: 16 July 2015

Abstract: The composition of the extracellular matrix (ECM) of skeletal muscle fibers is a unique environment that supports the regenerative capacity of satellite cells; the resident stem cell population. The impact of environment has great bearing on key properties permitting satellite cells to carry out tissue repair. In this study, we have investigated the influence of the ECM and glycolytic metabolism on satellite cell emergence and migration—two early processes required for muscle repair. Our results show that both influence the rate at which satellite cells emerge from the sub-basal lamina position and their rate of migration. These studies highlight the necessity of performing analysis of satellite behavior on their native substrate and will inform on the production of artificial scaffolds intended for medical uses.

Keywords: muscle; fiber; satellite; blebbing; myostatin; migration

1. Introduction

Skeletal muscle plays a central role in physiological, metabolic and nutritional processes in the human body as well facilitating locomotion. It undergoes continual adaptation during adult life, through its ability to activate robust anabolic processes involving increases in protein synthesis rates as well as utilizing stem cell populations to promote tissue growth and repair.

Recent work has shown that satellite cells, the resident stem cell population in skeletal muscle, are responsible for most if not all tissue repair following acute injury [1,2]. In resting undamaged muscle, satellite cells exist in a quiescent state on the sarcolemma of muscle fibers but under the endomysial extra-cellular matrix (ECM). Satellite cells are relatively metabolically inactive; evident by the sparse cytoplasmic content and associated organelles in particular mitochondria and are highly reliant on glycolysis for ATP production. Quiescent satellite cells are identifiable through their expression of Pax-7, a key gene that imbues stem cell properties [3]. Following tissue damage, satellite cells undergo major transcriptional changes (termed activation) in particular the induction of the myogenic determination factor MyoD [4]. Activated satellite cells remodel the ECM, eventually degrading it and assume a supra-basal position.

The ECM on which activated satellite cells perform their tissue repair properties differ greatly from traditionally used *in-vitro* conditions. This is important as the ECM influences stem cell properties in terms of self-renewal versus myogenic commitment decisions but also on the mechanisms facilitating cell migration. Satellite cells cultured on plastic migrate through a mesenchymal form of movement reliant on a polarized cell forming a lamellipodia at the leading edge [5]. The same cells on their native substrate move by a different mechanism, reliant on the formation and retraction of plasma membrane protrusions called blebs which enable migration of a variety of cell types during development and disease [6,7]. Bleb expansion is driven by hydrostatic pressure generated in the cytoplasm while the contractile actomyosin cortex underpins retraction [8]. Blebbing-based migration allows satellite cells to move at high speeds and permits rapid changes in direction, two activities supporting tissue repair.

There is huge commercial interest in developing artificial matrixes that can be seeded with satellite cells to form contracting myofibers with a view of deploying them to replace damaged tissue following severe trauma e.g., blast wounds. Materials as diverse as polyethylene glycol (PEG) to electro-spun graphene have been made into scaffolds for skeletal muscles [9,10]. However, many studies examining the suitability of artificial scaffolds for muscle tissue repair only superficially scrutinize the impact of novel substrates on satellite cell behavior. We suggest that it is very important the artificial matrixes support the normal activities of satellite cells which ultimately control their robust tissue repair properties. To that end, it is vital that we determine the influences of the environment on stem cell behavior.

In this study we have investigated the influence of the ECM and glycolytic activity on satellite cell emergence and migration. We took advantage of the myostatin null mouse that contains much thinner ECM surrounding muscle fibers compared to that of a wild-type mouse. Secondly we exploited the availability of 3-Bromo pyruvate (3-BP) a small compound inhibitor that perturbs glycolysis [11]. Both studies reveal unexpected findings. Firstly, our results show that decrease in ECM thickness does not translate into higher rates of satellite cells emergence and highlights the impact of endomysium composition on satellite cell behavior. Secondly we demonstrate that glycolysis impacts hugely on the migratory process; its inhibition leads to precocious emergence followed by an attenuation in migration. We suggest that both these parameters need to be given due consideration during the development of artificial muscle matrixes.

2. Methods

2.1. Ethical Approval

Animals were maintained and experiments performed under license from the UK Home Office in accordance with the Animals (Scientific Procedures) Act 1986 and complied with the policy and regulations of the journal.

2.2. Single Myofiber Isolation and Culture

Single muscle fibers were isolated from the extensor digitorum longus (EDL) muscle of 12-week old male C57Bl6 and myostatin null mice on identical background [4]. In brief an EDL was dissected with both tendons intact and individual myofibers were generated by digestion with 0.2% type I collagenase in Dulbecco modified eagle medium (DMEM) at 37 °C under 5% CO₂. Single fibers were plated in floating culture wells containing single fiber culture medium (SFCM, DMEM supplemented with 10% horse serum, 0.5% chick embryo extract and 1% penicillin/streptomycin) using tapered glass pipettes. When required 3-Bromo pyruvate (50, 100 and 500 μM) (Sigma-Aldrich, Gillingham, UK) was introduced to the SFCM either from the point of myofiber culture initiation or 24 h post myofiber isolation.

2.3. Time-Lapse Microscopy

Following 24 h of culture, myofiber cultures were monitored using a phase contrast microscope housed in an environmental chamber maintained at 37 °C and supplemented with 5% CO₂. Time-lapse video was taken at a rate of one frame/15 min over 24 h using 10× objectives [3,4]. High-power time-lapse microscopy was carried out using 100X objectives enabling the visualization of cell-surface blebbing. Fibers were cultured for 48 h and subsequently filmed at a rate of one frame/2 s for these studies.

2.4. Immunocytochemistry

Immunocytochemistry of satellite cells on single myofibers was carried out as described previously [4]. Briefly, at pre-determined time points myofibers were fixed in 4% PFA/PBS for 15 min. Thereafter, fibers were washed three times in PBS. Myofibers were permeabilized in a solution of 20 mM HEPES, 300 mM sucrose, 50 mM NaCl, 3 mM MgCl₂, and 0.5% Triton X-100 (pH 7) at 4 °C for 15 min and incubated in blocking wash buffer (5% foetal calf serum in PBS containing 0.01% Triton X-100) for 30 min prior to antibody incubation. Antibodies were diluted and pre-blocked in wash buffer for 30 min prior to addition to the myofibers. Primary antibodies used: Polyclonal rabbit anti-Laminin (Sigma L-9393 1:200), monoclonal mouse anti-Pax7 (Developmental Studies Hybridoma Bank [DSHB] 1:1), polyclonal rabbit-anti-MyoD (Santa Cruz biotechnology 1:200) and monoclonal anti- α smooth muscle actin (Sigma A 2547 1:300). All primary antibodies incubations were for 12 h at 4 °C. Primary antibodies were visualized using the following secondary antibodies: Alexa Fluor goat anti-mouse 594 (Molecular probes A11032) and Alexa Fluor goat anti-rabbit 488 (Molecular probes A11034). Secondary antibodies were used at 1:200 and incubated at room temperature for 45 min. Myofibers were mounted in

fluorescent mounting medium (DAKO) containing 7.5 mg/mL 4',6-diamidino-2-phenylindole (DAPI) for nuclear visualization.

2.5. Fluorescence Microscopy

Mounted myofibers were analyzed using a Zeiss Axioscope fluorescent microscope, and images were captured using the AxioCam digital camera system and Axiovision image analysis software (version 4.7).

2.6. Electron Microscopy

Myofibers were fixed in 4% PFA for 15 min after 24, 48, or 72 h in standard culture conditions. Myofibers were dehydrated through 30%, 50%, 70%, 80%, 90%, and 100% ethanol solution series (15 min for each step) and transferred to a critical point drier (Balzers CPD 030, using liquid carbon dioxide). Myofibers were transferred to scanning electron microscopy (SEM) chucks using micro-forceps and gold-coated using an Edwards S150B sputter-coater. Coated myofibers were then analyzed with a FEI 600F SEM.

2.7. Image and Movie Analysis

Image analysis was carried out using ImageJ (version 1.49 m). Satellite cells were tracked manually using the MTrackJ plugin. Bleb dynamics on high magnification movies and bleb number on SEM images were manually quantified using ImageJ. Satellite cell emergence profile and morphologies were manually assessed by examining live images captured by an Axiovision digital camera system. Data was processed for statistical significance using independent sample t-tests and one-way ANOVA with Bonferroni's *post-hoc* analysis where appropriate, at the 95% confidence interval. All data are presented as mean \pm SEM.

3. Results

3.1. Influence of ECM on Satellite Cell Emergence

We first examined the emergence characteristics of satellite cells from the myostatin null mouse (*Mstn*^{-/-}) which contains an extremely thin ECM surrounding muscle fibers to test whether differences in thickness of the basal lamina influences this activity. To that end we isolated single fibers from *Mstn*^{-/-} and WT mice and cultured them for 14h before conducting immunocytochemistry with Pax7 (satellite cell marker) and laminin, a major constituent of basal lamina and counted the number of cells that were positioned above the ECM (Figure 1A,B). We found that the number of emerged satellite cells from *Mstn*^{-/-} were about half that compared to those from WT mice (Figure 1C). Therefore the emergence characteristics were profoundly retarded by the genetic deletion of myostatin even though it has less ECM.

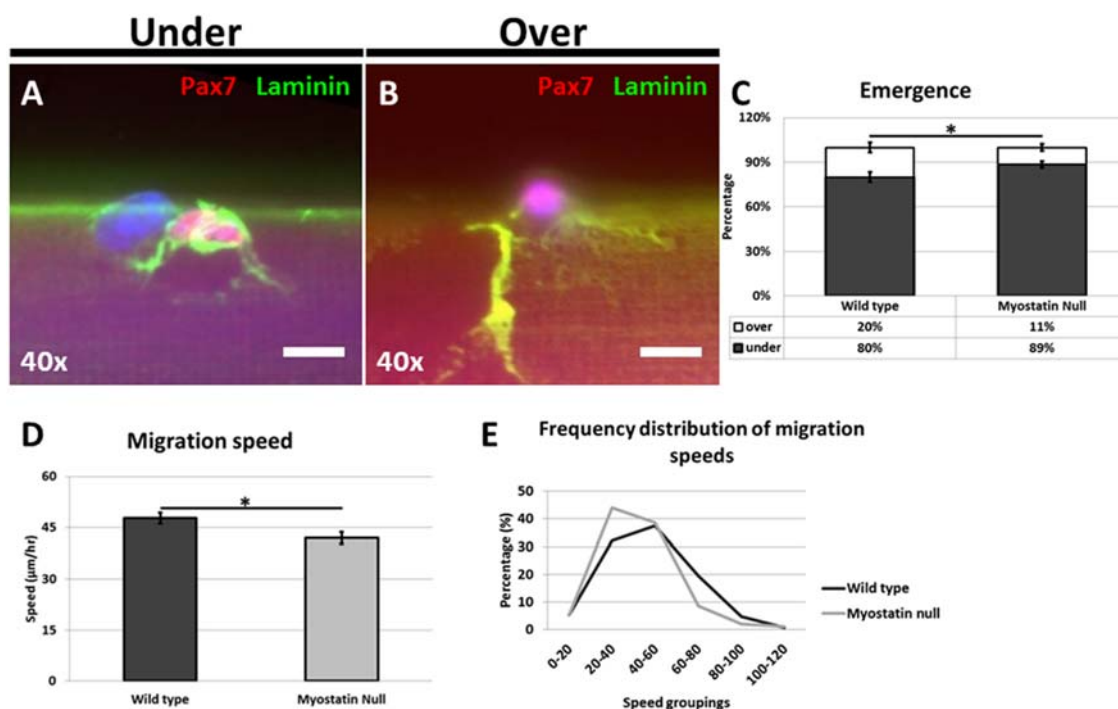


Figure 1. Delay in the emergence of myostatin null satellite cells. Immunofluorescent staining of single myofibers using antibodies against Pax7, (red) to identify satellite cells and laminin, (green) basal lamina marker. (A) Image of a satellite cell in transition to attaining a position above the basal lamina; (B) Satellite cell localized to the surface of the basal lamina; (C) Quantifying of emergence. At T 14 h wild types (20%) have significantly more satellite cells in a supra-basal position compared to the myostatin nulls (11%) ($*p < 0.001$); (D) Myostatin null satellite cells (41 $\mu\text{m}/\text{h}$) migrated significantly slower than their wild type counterparts (48 $\mu\text{m}/\text{h}$) ($*p < 0.01$); (E) Frequency distribution of the migration speeds showing that the myostatin null satellite cell speeds are shifted left towards the lower rate of movement. Scale bar on figures (A) and (B) indicates 10 μm .

3.2. ECM Regulates Speed of Satellite Cell Migration

We next examined the migration characteristics of satellite cells from *Mstn*^{-/-} mice on their native substrate and found that they were significantly slower in terms of movement compared to WT. While satellite cells from WT migrated at 48 $\mu\text{m}/\text{h}$, those from *Mstn*^{-/-} moved at 41 $\mu\text{m}/\text{h}$ (Figure 1D). The migration data was examined through a frequency distribution curve and we found that satellite cells from both genotypes gave single peaks of migration speed with a left shift being induced by the deletion of myostatin (Figure 1E).

3.3. ECM Impact on Satellite Cell Blebbing

We previously showed that the fast rate of migration displayed by satellite cells was due to their deployment of a novel means of movement that depended on the formation and retractions of the plasma membrane protrusions called blebs [6]. We therefore characterized the surface features of satellite cell using an antibody against α -smooth muscle actin and found that there was a genotype specific effect on cell morphology. The majority of WT cells displayed a large number of blebs protruding from the plasma membrane (Figure 2A,D). In contrast, satellite cells lacking *Mstn*^{-/-} formed two major populations; half the

cells displayed blebs whereas the other half had smooth surfaces (Figure 2B,D). Furthermore, we found more cells that displayed an elongated morphology in the absence of Mstn compared to WT (Figure 2C,D). Interestingly these latter cells lacked a flattened leading edge indicating they were not migrating through the classical lamellipodia based form of movement (Figure 2C).

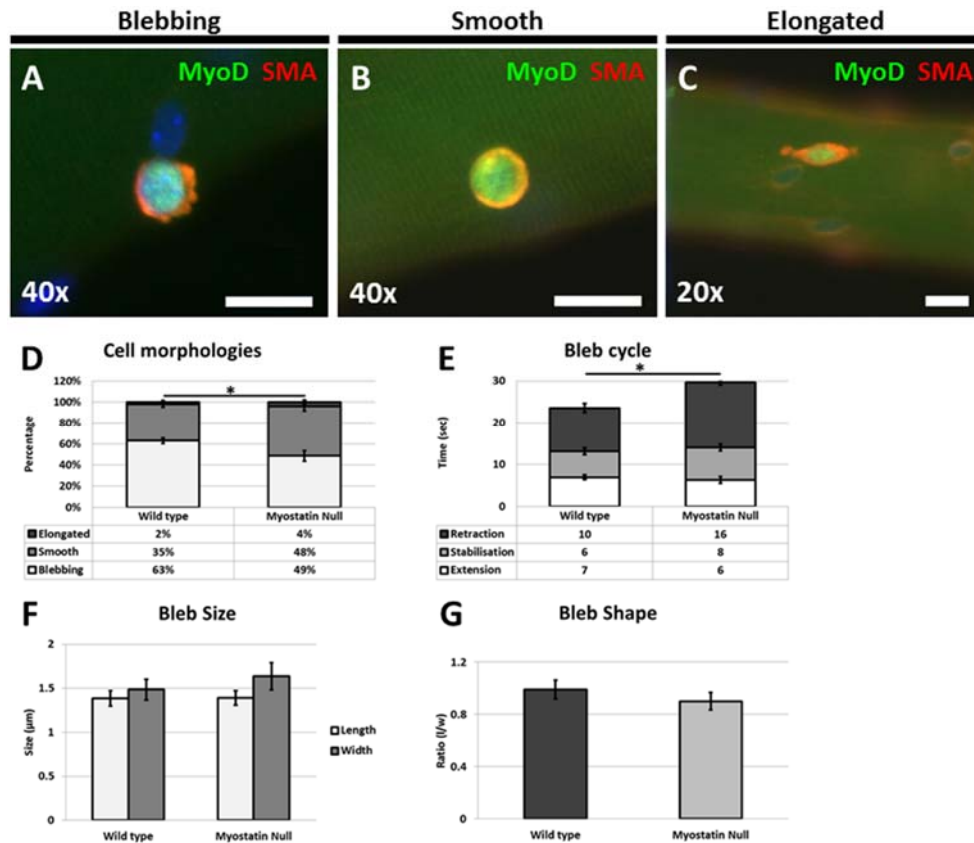


Figure 2. Blebbing of the satellite cells in the myostatin nulls on muscle fibers. Activated satellite cells identified by MyoD expression (green) smooth muscle actin for cortex (red). (A–C) Representative images of the different morphologies; blebbing, smooth and elongated respectively; (D) Quantification of the smooth muscle actin profile of the satellite cells. Wild type were predominantly blebbing (63% compared to 35% smooth). Myostatin null cells had equal blebbing (49%) to a smooth (48%) morphology. ($p < 0.05$); (E) Quantification of bleb dynamics. Myostatin null satellite cells had a significantly longer retraction phase (16 s) compared to the wild type (10 s) cells ($*p < 0.01$); (F) Quantification of bleb size; (G) Quantification of bleb shape. Scale bar on figures (A–C) indicates 20 µm.

Our results showed that there were fewer $Mstn^{-/-}$ cells displaying membrane blebs. We pursued this line of investigation by conducting high-resolution time-lapse studies to determine the dynamics of blebbing. Significantly, we found that there were differences in the blebbing characteristics between the two genotypes. We found that the bleb lifespan was considerably longer in satellite cells from $Mstn^{-/-}$ compared to WT (Figure 2E). We dissected the origins for the increase in bleb life by examining the three phases that constitute the process; extension, stabilization and retraction. Comparing the duration for these parameters we found that both genotypes have similar periods of bleb extension and stabilization. However, the retraction phase was lengthened in $Mstn^{-/-}$ satellite cells compared to WT

(Figure 2E). Finally, we determined the shape of the bleb since this is important in controlling migration of many cell types [6,12]. We found that blebs from both WT and *Mstn*^{-/-} were slightly wider than they were long and when reformulated these characteristics allowed us to calculate bleb shape which is a ratio of length over width (Figure 2F). We found that the bleb shape value was lower in cells from *Mstn*^{-/-} compared to WT but that this did not reach a statistical level of significance (Figure 2G).

3.4. The Role of Glycolysis during Satellite Cell Emergence

We next examined the influence of perturbing glycolytic activity in satellite cells on their stem cell behavior. We started by examining the rate of satellite cell emergence by exposing them to differing concentrations of 3-BP (50–500 μM), an inhibitor of glycolysis. We found that there was a profound effect of this chemical over a 10-fold concentration increase that resulted in a doubling of the number of cells assuming a supra-basal position (Figure 3). Therefore inhibiting glycolysis promotes the emergence of satellite cells.

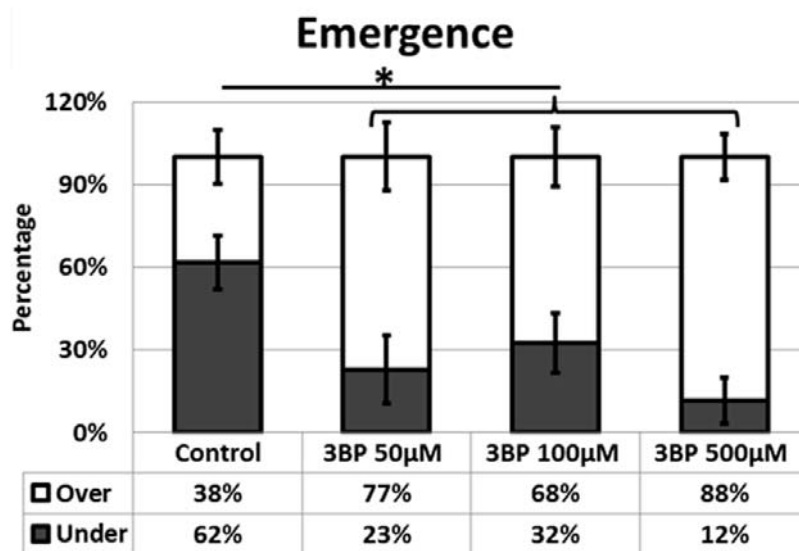


Figure 3. Inhibition of glycolysis promotes satellite cell emergence. 3-Bromo-pyruvate (3-BP) induced in a significantly higher proportion of the satellite cells achieving a supra-basal position at all concentrations used (50, 100, 500 μM) compared to the untreated control cells (**p* < 0.05).

3.5. Influence of Inhibiting Glycolysis on Satellite Cell Migration

Next, we examined the migration of satellite cells once they had emerged to a supra-basal position by exposing fibers cultured for 24 h in normal culture medium to 3-BP. Our data shows that low (50 μM) or high concentrations (500 μM data not shown) almost halved the rate of cell migration (Figure 4A).

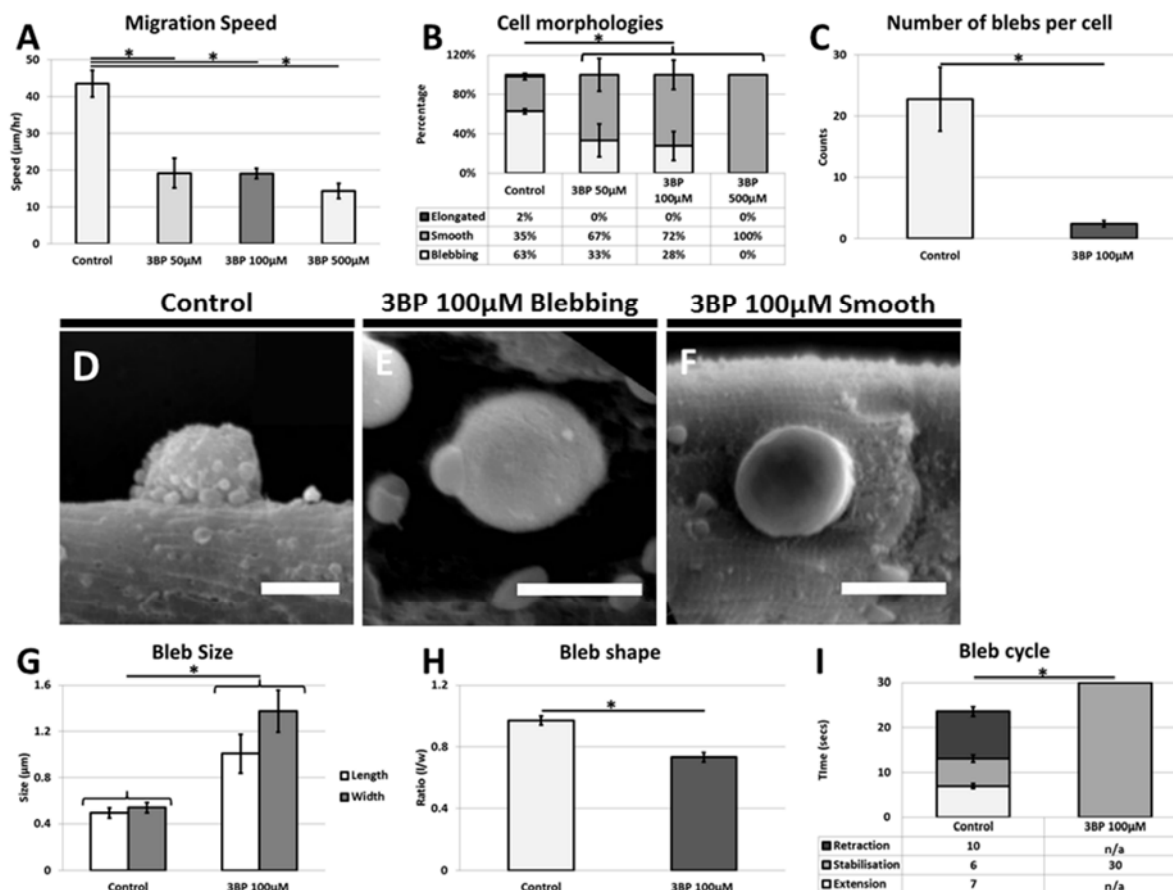


Figure 4. Glycolysis is required for satellite cell migration and blebbing. (A) Control cells (44 μm/h) migrated more than twice as fast as the 3-BP treated satellite cells on muscle fibers (19, 19, and 14 μm/h) at all three concentrations (50, 100, 500 μM respectively) (**p* < 0.001); (B) Glycolysis is required for satellite cell blebbing (**p* < 0.0001); (C) Quantification of bleb number after inhibition of blebbing (**p* < 0.001); (D) Electron microscopy of a blebbing untreated cell (scale bar = 5 μm); (E) blebbing cell treated after 100 μm 3-BP treatment (scale bar = 5 μm); (F) smooth cell treated with 100 μm 3-BP (scale bar = 10 μm); (G) Quantification of blebs per shows that inhibition of glycolysis induced larger blebs (**p* < 0.01) and altered the overall shape of the blebs (H); (I) Inhibition of glycolysis altered bleb dynamics with 3-BP cells slowing only the extension phase (**p* < 0.05).

3.6. Glycolysis and Satellite Cell Blebbing

We sought an explanation for the change in migration speed resulting from exposing satellite cells to 3-BP and therefore examine surface morphology using scanning electron microscopy. We found that even at the lowest concentration, 3-BP changed the profile of cells so that there were fewer cells with blebs on the muscle fiber and most displayed smooth surfaces (Figure 4B). Interestingly whereas there was no dose related effect on migration speed, there was an influence on the amount of 3-BP in terms of cell morphology such that an increase in amount resulted in fewer blebbing cells (Figure 4B).

At this stage we discovered that, even though there were some cells that displayed blebs in the presence of low concentration of 3-BP, the number of blebs was profoundly decreased. Whereas control treated cells displayed between 20 and 25 blebs, the majority of cells exposed to 100 μM 3-BP only

showed one or two protrusions (Figure 4C–F). Furthermore the few blebs that did form in the presence of 3-BP were of altered proportion compared to WT. They were not only longer and wider but also the overall shape was different to WT. Examination of the shape of blebs revealed that satellite cells exposed to low concentration of 3-BP were more squat than controls (Figure 4G–H). Moreover, untreated cells showed extending and retracting blebs, while in the presence of even low contraction of 3-BP the process of bleb retraction was inhibited: previously formed blebs were unable to undergo retraction in the entire period of observation (Figure 4I).

Therefore, inhibition of glycolysis has a profound effect on the migratory properties of satellite cells on their native matrix.

4. Discussion

Satellite cells, the resident stem cells of skeletal muscle occupy a unique environment which has a major impact on these cells to carry out tissue repair [2]. It is very important for tissue engineering purposes to understand the influence of the environment on the activity of satellite cells if they are going to be exploited for regenerative uses.

In this study, we examined the behavior of satellite cells on their native substrate in two settings; one in which there was a decrease in the ECM content and the other where there was a change in glycolytic metabolism.

As a start point we suggest that any differences revealed in the *Mstn*^{-/-} experiments depend on properties of the muscle fiber and not the satellite cells. This assumption is based on the findings that muscle fibers express both the ligand (*Mstn*) and its receptors and therefore are influenced by deletion of the gene, evident by changes in size and composition. In contrast, the satellite cells from *Mstn*^{-/-} mice are equivalent to their WT counterparts as neither express the *Mstn* ligand or receptor [13]. In the first series of experiments we showed that in the absence of *Mstn*, satellite cells emerged from their sub-basal lamina position far slower than WT cells. This result was surprising given that the endomysium of *Mstn* null muscle is thinner than in WT muscle [14]. Possible explanation for these findings could lie in the relationship between the ECM and enzymes responsible for its degradation during satellite cell activation. A number of studies have shown that matrix metalloproteinases (MMPs) are required for activation of satellite cells [15]. We suggest that the ECM of *Mstn*^{-/-} fibers could have lower levels of these MMPs that would attenuate the emergence program. Studies are underway to test this line of investigation.

Our results also show for the first time that satellite cells from the hypertrophic mouse migrate at a significantly lower rate on their native substrate and that the migrating cells displayed altered morphologies. Interestingly we found that the even though the number of cells displaying a blebbing characteristic was significantly decreased they had not developed characteristics of migrating mesenchymal cells with the presence of a flattened leading edge composed of a lamellipodia [5]. Previous work performed in cancer cells has shown the existence of antagonistic mechanisms that control cell shape and migration; the action of Rho mediated through ROCK promotes blebbing which acts to inhibit the action of WAVE that supports lamellipodia formation [16]. In addition, WAVE2 inhibits the action of ROCK, leading to the scenario that attenuation of mechanisms supporting blebbing lead to a cell changing its morphology to develop a lamellipodia [6,16]. Here we show that this relationship is violated with the presence of rounded non-blebbing cells, which nevertheless fail to

develop a lamellipodia. We suggest that ECM changes due to Mstn deletion results in modifications in the adhesion properties of the endomysium that permits some features of blebbing cells (rounding and the formation of an ordered cortical actin layer) but does not fully support dynamic membrane extension and retraction. However, the changes in the ECM in the absence of Mstn fail to result in a substrate that delivers the high level of stiffness that promotes the formation of a lamellipodia [17].

Satellite cells in resting muscle exist in a quiescent state exemplified by the relative lack of cytoplasm and its associated organelles in relation to the size of the nucleus [18]. The metabolic activity of the mitochondria in quiescent satellite cells is thought to be low due to its inactive state and to minimize the generation of reactive oxygen species (ROS) that would otherwise impact on the control of cell proliferation, survival, stem cell self-renewal as well as influence the molecular pathways that regulate differentiation.

We showed that satellite cells are induced into activity following exposure of 3-BP a potent inhibitor of glycolysis [11]. However once they have emerged from their sub-basal position, we found that their migratory processes were attenuated. We suggest that following the inhibition of glycolysis, satellite cells activate a stress response program as their major form of energy production has been blocked. These findings are congruent with previous studies on other stem cell populations including those of the hematopoietic system that too displays precocious activation after stress [19].

However once they have emerged onto the muscle fiber, migration, one of the key activities undertaken by the stem cells is severely limited by the absence of glycolytic activity [7,20]. Our results show that this process must be highly energy dependent since the cells unable to fully undertake glycolysis decrease their migration rate by over 50%. Blebbing itself seems to be reliant on the glycolytic process since very few cells display anywhere near the normal number of plasma membrane protrusions. However, it is noteworthy that cells do not revert to using the lamellipodia means of translocation but still move. We suggest that glycolysis is used by the cells to promote cell migration through the highly energy demanding process of membrane extension and retraction. However, during decreased glycolysis, satellite cells still migrate but less rapidly. In such cases cell migration may be mediated by the rounded cells through a rolling action as seen during neutrophil extravasation process [21]. These experiments clearly show the influence of 3-BP on the satellite cells. The muscle fiber too undertakes glycolysis and therefore it too must be influenced by 3-BP. We believe that the majority of changes in satellite cell behavior are due to the direct consequences of the 3-BP on the stem cells as opposed to indirect influences through changes in properties associated with the muscle fiber. This conclusion is based on the fact that many of the responses were detected within minutes after the introduction of 3-BP, whereas changes in the ECM of muscle fibers would be expected to take longer to alter. Future work is underway to examine in detail the changes in the muscle fiber properties following the inhibition glycolysis.

5. Conclusions

Our study examined the influence of ECM composition and metabolism on stem cell emergence, a key component of skeletal muscle regeneration. Results from the study were intriguing and unexpected. Firstly we showed that a thinner connective tissue covering the satellite cells does not result in a greater rate of emergence. In fact, the reduced endomysium of Mstn^{-/-} mice impedes emergence. These results suggest that the composition of the endomysium rather than its quantity is the dominant determining factor controlling satellite cell emergence.

Secondly, we showed satellite cells need to perform glycolysis to maintain their sub-lamina position and that inhibition of glycolysis induces a stress process that forces them to emerge from their niche. However, the cells are unable to migrate in their normal manner, which would detrimentally impact on their ability to carry out muscle repair.

Acknowledgment

This work was funded by the BBSRC (BB/J016454/1 to HCH and BB/I015787/1 to RM), the Association Française contre les Myopathies (to HPM) and the Lifelong Learning Program-Erasmus Student Placement to GB. We thank the three reviewers for making constructive criticisms, which allowed us to improve the manuscript.

Author Contributions

Gaia Butera and Robert Mitchell performed experimental work. Henry Collins-Hooper helped in project design and performed experimental work. Helen P. Makarenkova, Emiliano Lasagna and Ketan Patel designed the project and wrote the manuscript.

Conflicts of Interest

The authors declare no conflict of interest.

References

1. Mauro, A. Satellite cell of skeletal muscle fibers. *J. Biophys. Biochem. Cytol.* **1961**, *9*, 493–495.
2. Collins, C.A.; Olsen, I.; Zammit, P.S.; Heslop, L.; Petrie, A.; Partridge, T.A.; Morgan, J.E. Stem cell function, self-renewal, and behavioral heterogeneity of cells from the adult muscle satellite cell niche. *Cell* **2005**, *122*, 289–301.
3. Zammit, P.S.; Golding, J.P.; Nagata, Y.; Hudon, V.; Partridge, T.A.; Beauchamp, J.R. Muscle satellite cells adopt divergent fates: A mechanism for self-renewal? *J. Cell Biol.* **2004**, *166*, 347–357.
4. Otto, A.; Schmidt, C.; Luke, G.; Allen, S.; Valasek, P.; Muntoni, F.; Lawrence-Watt, D.; Patel, K. Canonical Wnt signalling induces satellite-cell proliferation during adult skeletal muscle regeneration. *J. Cell Sci.* **2008**, *121*, 2939–2950.
5. Nobes, C.D.; Hall, A. Rho, rac, and cdc42 GTPases regulate the assembly of multimolecular focal complexes associated with actin stress fibers, lamellipodia, and filopodia. *Cell* **1995**, *81*, 53–62.
6. Otto, A.; Collins-Hooper, H.; Patel, A.; Dash, P.R.; Patel, K. Adult skeletal muscle stem cell migration is mediated by a blebbing/amoeboid mechanism. *Rejuvenation Res.* **2011**, *14*, 249–260.
7. Collins-Hooper, H.; Woolley, T.E.; Dyson, L.; Patel, A.; Potter, P.; Baker, R.E.; Gaffney, E.A.; Maini, P.K.; Dash, P.R.; Patel, K. Age-related changes in speed and mechanism of adult skeletal muscle stem cell migration. *Stem Cells* **2012**, *30*, 1182–1195.
8. Charras, G.T.; Yarrow, J.C.; Horton, M.A.; Mahadevan, L.; Mitchison, T.J. Non-equilibration of hydrostatic pressure in blebbing cells. *Nature* **2005**, *435*, 365–369.

9. Fuoco, C.; Rizzi, R.; Biondo, A.; Longa, E.; Mascaro, A.; Shapira-Schweitzer, K.; Kossov, O.; Benedetti, S.; Salvatori, M.L.; Santoleri, S.; *et al.* *In vivo* generation of a mature and functional artificial skeletal muscle. *EMBO Mol. Med.* **2015**, *7*, 411–422.
10. Shin, Y.C.; Lee, J.H.; Jin, L.; Kim, M.J.; Kim, Y.J.; Hyun, J.K.; Jung, T.G.; Hong, S.W.; Han, D.W. Stimulated myoblast differentiation on graphene oxide-impregnated PLGA-collagen hybrid fibre matrices. *J. Nanobiotechnol.* **2015**, *13*, 21.
11. Shoshan, M.C. 3-bromopyruvate: Targets and outcomes. *J. Bioenerg. Biomembr.* **2012**, *44*, 7–15.
12. Zatulovskiy, E.; Tyson, R.; Bretschneider, T.; Kay, R.R. Bleb-driven chemotaxis of dictyostelium cells. *J. Cell Biol.* **2014**, *204*, 1027–1044.
13. Amthor, H.; Otto, A.; Vulin, A.; Rochat, A.; Dumonceaux, J.; Garcia, L.; Mouisel, E.; Hourde, C.; Macharia, R.; Friedrichs, M.; *et al.* Muscle hypertrophy driven by myostatin blockade does not require stem/precursor-cell activity. *Proc. Natl. Acad. Sci. USA* **2009**, *106*, 7479–7484.
14. Elashry, M.I.; Collins-Hooper, H.; Vaiyapuri, S.; Patel, K. Characterisation of connective tissue from the hypertrophic skeletal muscle of myostatin null mice. *J. Anat.* **2012**, *220*, 603–611.
15. Yamada, M.; Tatsumi, R.; Kikuri, T.; Okamoto, S.; Nonoshita, S.; Mizunoya, W.; Ikeuchi, Y.; Shimokawa, H.; Sunagawa, K.; Allen, R.E. Matrix metalloproteinases are involved in mechanical stretch-induced activation of skeletal muscle satellite cells. *Muscle Nerve* **2006**, *34*, 313–319.
16. Sanz-Moreno, V.; Gadea, G.; Ahn, J.; Paterson, H.; Marra, P.; Pinner, S.; Sahai, E.; Marshall, C.J. Rac activation and inactivation control plasticity of tumor cell movement. *Cell* **2008**, *135*, 510–523.
17. Peyton, S.R.; Putnam, A.J. Extracellular matrix rigidity governs smooth muscle cell motility in a biphasic fashion. *J. Cell Physiol.* **2005**, *204*, 198–209.
18. Snow, M.H. The effects of aging on satellite cells in skeletal muscles of mice and rats. *Cell Tissue Res.* **1977**, *185*, 399–408.
19. Essers, M.A.; Offner, S.; Blanco-Bose, W.E.; Waibler, Z.; Kalinke, U.; Duchosal, M.A.; Trumpp, A. Ifn α activates dormant haematopoietic stem cells *in vivo*. *Nature* **2009**, *458*, 904–908.
20. Siegel, A.L.; Atchison, K.; Fisher, K.E.; Davis, G.E.; Cornelison, D.D. 3D timelapse analysis of muscle satellite cell motility. *Stem Cells* **2009**, *27*, 2527–2538.
21. Diacovo, T.G.; Roth, S.J.; Buccola, J.M.; Bainton, D.F.; Springer, T.A. Neutrophil rolling, arrest, and transmigration across activated, surface-adherent platelets via sequential action of P-selectin and the beta 2-integrin CD11B/CD18. *Blood* **1996**, *88*, 146–157.