

*Long term dietary supplementation with microalgae increases plasma docosahexaenoic acid in milk and plasma but does not affect plasma 13, 14-dihydro-15-keto PGF<sub>2</sub> $\alpha$  concentration in dairy COWS*

Article

Accepted Version

Till, B. E., Huntingdon, J. A., Kliem, K. E., Taylor-Pickard, J. and Sinclair, L. A. (2020) Long term dietary supplementation with microalgae increases plasma docosahexaenoic acid in milk and plasma but does not affect plasma 13, 14-dihydro-15-keto PGF<sub>2</sub> $\alpha$  concentration in dairy cows. *Journal of Dairy Research*, 87 (1). pp. 14-22. ISSN 0022-0299 doi: <https://doi.org/10.1017/S002202991900102X> Available at <https://centaur.reading.ac.uk/88892/>

It is advisable to refer to the publisher's version if you intend to cite from the work. See [Guidance on citing](#).

To link to this article DOI: <http://dx.doi.org/10.1017/S002202991900102X>

Publisher: Cambridge University Press

including copyright law. Copyright and IPR is retained by the creators or other copyright holders. Terms and conditions for use of this material are defined in the [End User Agreement](#).

[www.reading.ac.uk/centaur](http://www.reading.ac.uk/centaur)

## **CentAUR**

Central Archive at the University of Reading

Reading's research outputs online

1 **Long term dietary supplementation with microalgae increases plasma**  
2 **docosahexaenoic acid in milk and plasma but does not affect plasma**  
3 **13, 14-dihydro-15-keto PGF<sub>2α</sub> concentration in dairy cows**

4

5 **Bethan E Till<sup>1</sup> James A Huntington<sup>1</sup> Kirsty E Kliem<sup>2</sup> Jules Taylor-Pickard<sup>3</sup> and Liam A**  
6 **Sinclair<sup>1\*</sup>**

7

8 <sup>1</sup>Department of Animal Production, Welfare and Veterinary Sciences, Harper Adams University,  
9 Newport, Shropshire, TF10 8NB, UK.

10 <sup>2</sup>Division of Food Production and Quality, School of Agriculture, Policy and Development,  
11 University of Reading, Reading, RG6 6AR, UK.

12 <sup>3</sup>Alltech Biotechnology Centre, Summerhill Road, Dunboyne, Ireland.

13

14 Short title: Microalgae and milk fatty acids

15

16 **\*For correspondence; e-mail [lsinclair@harper-adams.ac.uk](mailto:lsinclair@harper-adams.ac.uk)**

17

18

19

20

21

22

23

24 The aims of the study were to determine the long-term effects of dietary supplementation with  
25 microalgae (SCIM) on milk and blood fatty acid (FA) composition and reproductive hormones in  
26 early lactation dairy cows. Sixty Holstein-Friesian dairy cows (30 per treatment) were  
27 unsupplemented (Control) or supplemented with 100 g of SCIM (*Schizochytrium imancinum* sp)  
28 per cow per day from 25 ± 0.5 days post-partum for 98 days. Intake and milk yield were recorded  
29 daily, with milk samples collected at weeks 0, 1, 2, 4, 8 and 14, and blood samples collected  
30 from 12 representative pairs per treatment at weeks 0, 2, 4, 8, and 14 for subsequent analysis  
31 of FA, β-hydroxybutyrate, non-esterified fatty acids and glucose. At 33 ± 0.9 days postpartum  
32 the oestrus cycle of 24 cows (12 per treatment) were synchronised and plasma 13,14-dihydro-  
33 15-keto PGF<sub>2α</sub> (PGFM) concentrations determined following an oxytocin challenge. Data were  
34 analysed by repeated measures analysis of variance. There was no effect of treatment on dry  
35 matter intake, milk yield or milk fat content, with mean values across treatments of 22.1 and  
36 40.6 kg/d, and 37.2 g/kg respectively. Milk fat concentration of C22:6 n-3 increased rapidly in  
37 cows receiving SCIM, reaching a maximum of 0.38 g/100 g FA by week 14. Similarly, blood  
38 concentration of C22:6 n-3 increased to 1.6 g/100 g FA by week 14 in cows fed SCIM. There  
39 was no effect of treatment on plasma metabolites, but plasma glucose was lower in cows fed  
40 SCIM compared to the Control at week 2, and higher in weeks 4 and 8. There was no effect of  
41 treatment on peak plasma PGFM concentration or area under the curve. It is concluded that  
42 feeding SCIM rapidly increases blood and milk concentrations of C22:6 n-3 which are  
43 maintained over time, but does not improve plasma PGFM in dairy cows.

44

45 **Keywords:** dairy cow, fatty acids, hormones, milk quality, microalgae

46

47

48

49

50 Increasing the content of very long chain n-3 polyunsaturated fatty acids (LC n-3 PUFA) such  
51 as eicosapentaenoic acid (C20:5n-3) and docosahexaenoic acid (C22:6n-3) in food products is  
52 of interest due to their role in the prevention of certain cancers, development of the retina and  
53 brain tissue, anti-inflammatory properties, and their role in the modulation and prevention of  
54 coronary heart disease (Zarate et al. 2017). Several studies have successfully increased the LC  
55 n-3 PUFA content of dairy and meat products by supplementing with marine sources such as  
56 fish oil (FO) or microalgae (Rodriguez-Herrera et al. 2017; Vanbegue et al. 2018). The transfer  
57 efficiency of LC n-3 PUFA from marine sources to milk is, however, low (Chilliard et al. 2001)  
58 as the majority of the PUFA are biohydrogenated in the rumen to saturated fatty acids (FA) or  
59 their intermediaries (Sinclair et al. 2005). Additionally, a time dependent adaptation of the rumen  
60 to supplementation with LC n-3 PUFA and production of intermediaries has also been reported  
61 in some studies, further reducing the flow of PUFA to the small intestine (Shingfield et al. 2006).  
62 Most studies that have examined the effect of feeding LC n-3 PUFA have however, been short-  
63 term, and there is a lack of information on the long-term effects of supplementation on blood  
64 and milk FA profiles.

65 The fertility of dairy cows in most Western countries has declined over the past five  
66 decades, which has been associated with an intensification of production and higher milk yields  
67 (Rodney et al. 2015). Polyunsaturated FA have a major role in the endocrine system,  
68 metabolism and disease control, influencing the reproductive status of dairy cows in various  
69 ways. For example, the series 1 and 2 prostaglandins are synthesised from n-6 PUFA and are  
70 intimately involved in uterine involution and subsequent ovulation post-partum (Otto et al. 2014).  
71 In contrast, the 3 series prostaglandins are synthesised from n-3 PUFA and are involved in  
72 improving the environment for embryo implantation and survival by decreasing the secretion of  
73  $\text{PGF}_{2\alpha}$ , resulting in an increased lifespan of the corpus luteum (CL) (Dong Hyeon et al. 2016),  
74 improvement in blastocyst cell numbers, and maintenance of pregnancy (Otto et al. 2016). The  
75 objective of this study was to determine the effect of supplementation with microalgae that is  
76 high in C22:6 n-3 on milk and blood LC n-3 PUFA concentrations over a 14 week period, and  
77 to determine the effect on the synthesis of  $\text{PGF}_{2\alpha}$ .

78

## 79 **Material and methods**

80 The study was conducted in accordance with the requirement of the Animals (Scientific  
81 Procedures) Act 1986 (amended 2013) and received local ethical approval (reference 0115).

82

### 83 *Animals, diets and experimental design*

84 Sixty Holstein-Friesian dairy cows (12 primiparous and 48 multiparous) were randomly allocated  
85 into two homogenous groups at  $25 \pm 0.5$  days post calving based on parity and milk yield in  
86 the 7 days prior to the start of the study. Animals remained on treatment for 14 weeks and each  
87 group received one total mixed ration (TMR) that was either unsupplemented (Control) or  
88 supplemented with 100 g/day of dried *Schizochytrium imancinum* sp., (SCIM; Alltech, Kentucky,  
89 USA; Table 1). Cows in the Control group received an additional 100 g per cow per day of a  
90 rolled wheat/sugar beet feed mixture to provide a similar energy intake. Cows were fed the TMR  
91 once daily at 0900 h at 1.05 of the previous days intake via roughage intake feeders (Insentec  
92 B.V., Marknesse, The Netherlands) fitted with an automatic animal identification and weighing  
93 system calibrated to  $\pm 0.1$  kg. Feed intake was recorded daily and the diets sampled weekly and  
94 stored at  $-20$  °C for subsequent analysis. The SCIM contained 135 g/kg DM crude protein, 580  
95 g/kg oil and (g/100 g FA) 3.7, 1.5, 53.9, 1.7, 0.28, and 25.7 as C14:0, C14:1 *cis*-9, C16:0, C18:0,  
96 C20:5 n-3, and C22:6 n-3, respectively. From calving to the start of the study the cows were fed  
97 the same basal ration that did not contain SCIM. All cows had free access to salt blocks and  
98 water throughout the study.

99 All cows were milked twice daily at 0615 and 1600 h. Milk yield was recorded daily and  
100 cows were weighed and body condition scored (BCS; Ferguson et al. 1994) at approximately  
101 1100 h at 1 week prior to the start of study, then every other week. Milk samples were collected  
102 weekly at consecutive am and pm milkings for subsequent analysis. During weeks 0, 1, 2, 4, 8  
103 and 14 of the study milk samples were collected at 2 consecutive am and pm milkings from 16  
104 representative pairs of cows per group (based on their parity and milk yield in the week prior to  
105 allocation) and pooled based on the respective am and pm milk yield for FA determination.

106

107 *Blood metabolites and reproductive hormones*

108 Blood samples were collected from the jugular vein from 12 representative pairs of cows (based  
109 on their parity and milk yield in the week prior to allocation) at 1100 h during weeks 0, 2, 4, 8  
110 and 14. Samples were centrifuged at 1000 g for 15 min, the plasma separated and stored at -  
111 20°C prior to subsequent analysis. At day 33 ( $\pm$  0.9) postpartum, 24 representative cows (12  
112 per treatment group cows based on their parity and milk yield in the week prior to allocation)  
113 were synchronized in pairs using progesterone releasing intra-vaginal devices (PRID; Ceva  
114 Prid®Delta, Ceva Animal Health Ltd., Amersham, UK). The PRID's were removed after 10 d,  
115 and on day 17 of the synchronised oestrous cycle (Robinson et al., 2002), a catheter was  
116 inserted into the jugular vein following sedation with Sedaxylan (20 mg/ml xylazine solution at  
117 0.5 ml/100 kg; Dechra Pharmaceuticals PLC, Northwich, UK) injected into the coccygeal vein.  
118 Blood samples were collected via the jugular catheter at 15 min intervals for 1 h prior to the  
119 administration of oxytocin (100 IU; MSD Animal Health, Milton Keynes, UK), and at 15 min  
120 intervals for a further 3 h, and then at 30 min intervals until 4 h post oxytocin infusion to monitor  
121 uterine secretion of 13,14-dihydro-15-keto PGF<sub>2 $\alpha$</sub>  metabolite (PGFM). The blood was  
122 centrifuged at 1000 g for 15 min and the plasma frozen at -20°C prior to subsequent analysis.

123

124 *Chemical analysis*

125 The TMR samples were bulked within each month and a sub-sample analysed according to  
126 AOAC (2012) for DM (934.01), CP (988.05) and ash (924.05), whilst NDF was analysed  
127 according to Van Soest et al. (1991). Feed, milk and plasma fatty acid extraction and analysis  
128 are provided in the Supplementary Material. Milk fat, protein and somatic cell count (SCC) was  
129 determined at the National Milk Laboratories (Four Ashes, UK). Plasma samples were analysed  
130 for, 3-OHB, glucose and non-esterified fatty acids (NEFA) (kit catalogue no; RB1008; GU611  
131 and FA115, respectively Randox Laboratories, County Antrim, UK), using a Cobas Mira Plus  
132 autoanalyser (ABX Diagnostics, Bedfordshire, UK). Plasma concentration of PGFM, was

133 assayed using an ELISA kit (Cayman Chemical, Ann Arbor, MI, USA) with an inter- and intra-  
134 assay coefficient of variation of 13.0 and 9.9 % respectively.

135

### 136 *Calculations and statistical analysis*

137 All data were checked for normal distribution and analysed using Genstat 17<sup>th</sup> edition (VSN.  
138 Ltd, Oxford, UK). The SCC data were converted to their natural log prior to analysis. Daily live  
139 weight and body condition change were calculated as the final minus the initial value divided  
140 by the days on study. The PGFM area under the curve was calculated as described by  
141 Robinson et al. (2002). Variables having more than one observation were analysed using  
142 repeated measures ANOVA as:  $Y_{ijk} = \mu + P_i + D_j + T_k + D.T_{jk} + \epsilon_{ijk}$ , where  $Y_{ijk}$  = dependent  
143 variable;  $\mu$  = overall mean;  $P_i$  = fixed effect of pair;  $D_j$  = effect of diet,  $T_k$  = effect of time;  $D.A_{jk}$   
144 = interaction between diet and time and  $\epsilon_{ijk}$  = residual error. Variables with one observation  
145 were analysed by ANOVA using Genstat 18<sup>th</sup> edition (VSN Ltd., Oxford, UK).

## 146 **Results**

### 147 *Feed analysis*

148 The treatment diets had a similar chemical position with a mean DM of 378 g/kg, OM of 927  
149 g/kg DM, CP of 162 g/kg DM and NDF of 419 g/kg DM, whereas the pre-study diet was higher  
150 in CP and lower in NDF (Table 1). The pre-study diet had also a higher concentration of C14:0  
151 and C16:0 compared to the treatment diets. The SCIM diet contained 0.01 g/kg DM of C20:5 n-  
152 3 and 0.71 g/kg DM C22:6 n-3, whereas the pre-study and Control diets did not contain any  
153 detectable levels.

154

### 155 *Animal performance and blood metabolites*

156 There was no effect ( $P > 0.05$ ) of dietary treatment on DM intake, with a mean value of  
157 22.1 kg/d (Table 2), but was affected by time ( $P < 0.001$ ), increasing from 21.1 kg/d in week 1  
158 of the study to 23.4 kg/d at week 3 before decreasing to 20.9 kg/d at week 14. Similarly, there  
159 was no effect ( $P > 0.05$ ) of treatment on daily milk yield with a mean value of 40.6 kg/d, and a



160 peak yield of 42.2 kg/d occurring during week 3 of the study. Mean milk fat content was 37.2  
161 g/kg and fat yield 1.49 kg/d, and were not affected by dietary treatment ( $P > 0.05$ ), with both  
162 decreasing over time ( $P = 0.048$  and  $0.013$  respectively). Milk protein content and yield were  
163 not affected ( $P > 0.05$ ) by dietary treatment, and decreased with time ( $P < 0.001$ ). There was  
164 no effect ( $P > 0.05$ ) of dietary treatment on live weight, which increased by 0.23 kg/d over the  
165 14 week ( $P < 0.001$ ). Body condition score was unaffected ( $P > 0.05$ ) by treatment or time.

166 There was no effect ( $P > 0.05$ ) of dietary treatment on the mean concentration of plasma  
167 3-OHB, glucose or NEFA (Table 2). Plasma NEFA tended to decrease ( $P = 0.06$ ) from week 2  
168 to week 14 of the study, whilst plasma glucose was lower in cows receiving SCIM compared to  
169 the Control at week 2, and higher in weeks 4 and 8 ( $P < 0.05$ ).

170

#### 171 *Milk and plasma fatty acid profile*

172 There was no effect ( $P > 0.05$ ) of dietary treatment on milk fat content of C4:0 to C18:0,  
173 C18:1 t-12, C18:1 n-9, C18:2 n-6, C20:0, C18:2 t-10, cis-12 CLA, C20:3 n-3 and C20:5 n-3,  
174 SFA, MUFA or total n-6 FA (Table 3). Milk fat content of C18:1 t 10, and c-9, t-11 CLA were  
175 similar at week 0 in cows fed either treatment, and increased ( $P < 0.05$ ) in SCIM fed cows from  
176 week 2 onwards (Fig. 1a, b). There was also a higher milk fat content of C22:6n-3 in cows fed  
177 SCIM from week 2 onwards ( $P < 0.001$ ), with the maximum difference between treatments of  
178 0.34 g/100g FA occurring at week 14 of the study (Fig. 1c). Milk fat content of total PUFA and  
179 total n-3 PUFA increased and the n-6 to n-3 PUFA ratio decreased in SCIM fed cows from week  
180 2 of the study ( $P < 0.05$ ; Fig. 1d, e and f respectively), whilst C18:3 n-3 was lower at week 2 and  
181 C22:0 higher at weeks 8 and 14 in SCIM fed cows (Supplementary Fig. 1a and b). Milk fat  
182 content of C18:1 t-8, t-9, t-11 and C20:3 n-6 were higher in cows fed SCIM than the Control. The  
183 content of C10:0, C12:0, C14:0, C14:1 n-5, C16:1 n-7, C18:1 t-8, C18:2 n-6, C20:0, and  $\Sigma$ n-6  
184 FA increased with time, whilst C4:0, C6:0, C15:0, C17:0, C17:1, C18:1 t-12, C18:1 c-9, C18:2  
185 t-10, c-12 CLA, C20:3 n-6, C20:5 n-3 and MUFA decreased over the study period.

186 There was no effect ( $P > 0.05$ ) of dietary treatment on blood plasma fat content of  
187 C14:0 to C17:0, C18:1 t9, 12, or 15, C18:1 c-9, C20:5 n-3, total MUFA, PUFA or n-6 FA (Table

188 4). There was an interaction between time ( $P < 0.001$ ) on plasma C22:6 n-3 concentration,  
189 which was higher in SCIM fed cows from week two of the study, and remained high for the  
190 remainder of the study. In contrast, the ratio of the total n-6 to n-3 PUFA in blood plasma was  
191 lower ( $P < 0.001$ ) from week 8 of the study in cows fed SCIM (Fig. 2b). Blood plasma C18:0,  
192 C20:4 n-6, C20:0 and the sum of the saturated FA were similar at week 0 and decreased in  
193 cows fed SCIM compared to the control (Supplementary Fig. 2 a,d,e,f), whilst C18 t-10, C18:3  
194 n-3, and the sum of the total PUFA increased in cows fed SCIM (Supplementary Fig 2 b,c,g).

195

#### 196 *Plasma PGFM concentrations*

197 Plasma PGFM concentrations increased to a peak at 15-30 min following the oxytocin challenge  
198 (Fig. 3) before gradually returning to the basal level at 150 min for cows receiving either  
199 treatment. There was no effect of treatment on mean plasma PGFM concentration, area under  
200 the curve, or peak concentration ( $P > 0.05$ ).

201

## 202 **Discussion**

#### 203 *Animal performance and blood metabolites*

204 The primary objective of this study was to determine the long-term effects of feeding microalgae  
205 that is high in C22:6 n-3 on milk and plasma fat concentration of LC n-3 PUFA and animal  
206 performance. The cows were fed 100 g of microalgae per d as higher inclusion levels have been  
207 shown to reduce DM intake and/or result in milk fat depression (Vanbergue et al. 2018; Marques  
208 et al., 2019), with the consequence of a reduced milk and/or fat yield. In the current study there  
209 was no effect of dietary treatment on DM intake, which averaged 22.1 kg/d over the 14 week  
210 period. This finding is in accordance with Till et al. (2019) who reported no effect on intake when  
211 cows were fed 100 g of SCIM/d. There is no clear consensus in the literature on the effects of  
212 the addition of marine lipids on milk performance, with the level and composition of the  
213 supplement, as well as the basal ration, having a major influence (Sinedino et al. 2017; Mattos  
214 et al. 2004). In the current study there was no effect of treatment on milk fat content or yield.

215 Bauman & Griinari (2003) described how unique FA intermediates that are produced during the  
216 biohydrogenation of PUFA can cause an inhibitory effect on sterol regulatory element binding  
217 protein signaling on milk fat synthesis, with one intermediate identified as a potent inhibitor being  
218 C18:2t-10, c-12 CLA. In the current study milk fat concentration of C18:2 t-10, c-12 CLA was  
219 similar between treatments, and milk fat content was also unaffected by dietary treatment. Lock  
220 et al. (2007) investigated the effect of abomasal infusion of C18:1 t-10 on milk fat content in  
221 dairy cows and reported that it had no effect on milk fat synthesis. In the current study  
222 concentrations of C18: t-10 were higher in both blood plasma and milk of SCIM fed cows  
223 compared to the Control, yet milk fat content was unaffected, supporting that C18:1 t-10 is not  
224 a major factor controlling milk fat synthesis in dairy cows.

225 In early lactation mobilisation of lipid reserves is required to compensate for the  
226 imbalance between energy consumed, and energy secreted in milk (Cozzi et al. 2011), and is  
227 generally associated with an elevation in plasma 3-OHB (McArt et al. 2013). In the current study  
228 blood samples were collected at one time point and differences may have been detected had  
229 samples been taken throughout the day, although previous studies have demonstrated no  
230 interaction between feeding microalgae and time of sampling on plasma metabolites (Till et al.,  
231 2019). The mean plasma concentration of 3-OHB was not affected by dietary treatment and  
232 was within the accepted cut-point concentration of  $\geq 1.2$  mmol/l that is associated with sub-  
233 clinical or clinical ketosis (McArt et al. 2013). The lack of a difference in milk energy output,  
234 along with a similar DMI and live weight change in cows receiving the Control or SCIM  
235 treatments may explain the similarity in the plasma metabolite concentrations between  
236 treatments.

237

### 238 *Milk and plasma fatty acid profile*

239 Cows that received the SCIM supplement in the current study had higher milk and  
240 plasma concentrations of C22:6 n-3 compared to the Control from week 2 onwards, with the  
241 difference increasing until week 14 of the study. Most other studies that have fed microalgae to  
242 dairy cows have used short-term, change over-studies or fed for a short period of time, and

243 reported increases in C22:6 n-3 in milk of up to 0.46 g/100g FA with unprotected microalgae or  
244 0.76 g/100g FA with rumen protected microalgae (Till et al. 2019; Vanbergue et al. 2018).  
245 Studies that have fed microalgae for longer periods have reported an increase in the  
246 concentration of C22:6 n-3 in milk, but only measured milk FA at single time points and did not  
247 monitor the change over time (Sinedino et al. 2017). In contrast to the current findings, Shingfield  
248 et al. (2006) reported a temporal pattern in milk C22:6 n-3 concentration when FO was fed,  
249 reaching a maximum 5 days after FO introduction before declining. This response was  
250 suggested to be due to an adaptation of the rumen microbiome and progressive increase in the  
251 extent of biohydrogenation, or a shift in the incorporation of these FA from blood triacylglycerides  
252 toward phospholipids (Shingfield et al. 2006). In the current study milk samples were collected  
253 1 week after SCIM was introduced, and it is not possible to determine changes in milk fat  
254 C22:6n-3 concentration before this. However, the persistent increase in plasma and milk  
255 concentration over time does not support a significant ruminal adaptation or reduction in  
256 mammary uptake.

257         The inclusion of LC n-3 PUFA in the diet of ruminants typically lowers short and medium  
258 chained FA concentration in milk due to their inhibitory effects on mammary *de novo* FA  
259 synthesis (Shingfield et al. 2006), but in the current study the concentration of FA with a chain  
260 length < 16 was unchanged. A reduction in the milk fat concentration of C18:0 was observed by  
261 Till et al. (2019) when cows were fed SCIM, but in the current study there was only a trend for  
262 a reduction in milk C18:0 in SCIM fed cows which may be attributed to the inhibitory effect of  
263 SCIM on the biohydrogenation of C18-unsaturated FA to C18:0 in the rumen. It was also  
264 suggested by Shingfield et al. (2006) that mammary synthesis of C18:1 *cis*-9 from C18:0 via  $\Delta^9$ -  
265 desaturase was required for the maintenance of the fluidity of milk fat (Bichi et al. 2013). This  
266 is difficult to conclude from the current study as milk concentrations of C18:1 *cis*-9 were similar  
267 between dietary treatments.

268

269 *Plasma PGFM concentration*

270 The second objective of the current study was to investigate the effect of feeding SCIM  
271 on the plasma concentration of PGFM. Diets high in n-3 FA may reduce PGF<sub>2α</sub> synthesis and  
272 consequently prevent the regression of the corpus luteum (CL), allowing continued secretion of  
273 progesterone that can help improve embryo survival (Gulliver et al. 2012). The effects of added  
274 PUFA on reproductive function have however, not always been consistent. To date only two  
275 other studies have reported the effects of feeding LC n-3 PUFA from microalga on reproduction  
276 in dairy cows, with Sinedino et al. (2017) reporting that microalgae fed cows had an increase in  
277 conception rate, and upregulation of the interferon-stimulated gene RTP4 which is associated  
278 with placental development, immunomodulation and conceptus elongation (Riberio et al., 2016).  
279 In contrast, Vlcek et al. (2017) reported no effect on the size of the pre-ovulatory follicle at first  
280 or second synchronised oestrus, although the size of the corpus luteum was larger in cows fed  
281 microalgae. However, neither Sinedino et al. (2017) or Vlcek et al. (2017) determined the  
282 concentration of plasma PGF<sub>2α</sub>. In the current study SCIM supplementation had no effect on  
283 mean, peak or area under the curve of plasma PGFM. In contrast, Dirandeh et al. (2013)  
284 investigated the effect of feeding linseed oil as a source of n-3 on plasma concentration of PGFM  
285 from calving to 70 days post calving and reported a reduced plasma PGFM concentration.  
286 Similarly, Mattos et al. (2004), fed FO to dairy cows from 21 days pre-partum until 21 days post-  
287 partum, and reported a significant decrease in plasma PGFM concentrations at days 0, 0.5, 2  
288 and 2.5 post-partum in cows fed FO. By day 17 of the synchronized oestrus cycle, the cows  
289 selected for PGFM analysis in the current study had received the SCIM supplement for 39 ± 0.9  
290 days. Results from other studies suggest that this period of feeding was sufficient to affect the  
291 size of the corpus luteum and alter PGFM synthesis (Mattos et al. 2004; Petit et al. 2002).

292

293 **Conclusion**

294 The increase in milk and blood plasma C22:6 n-3 content over the 14 week study period  
295 suggest that the rumen microbial ecosystem did not adapt over time to the dietary  
296 supplementation of 100 g/d of SCIM. The increase in milk C22:6n-3 and *cis*-9, *trans*-11 CLA

297 improves milk quality for human consumption without affecting milk performance.  
298 Supplementing dairy cows with SCIM at the rate and length of time in the current study did not  
299 affect plasma PGFM concentrations.

300

### 301 **Acknowledgements**

302 The authors would like to acknowledge the technical support from Sarah Williams, Claire  
303 Cianchi, Ginny Whiston, Richard Beattie, Francesca Metherell and Keara Helen.

304

305

306

307

308

309

310

311

312

313

314

315

316

317

318

319

320

321

322

323

324

325 **References**

- 326 **Association of Official Analytical Chemists** 2012 Official methods of analysis. Association of  
327 Official Analytical Chemists, 19<sup>th</sup> Edition. Washington, DC, USA.
- 328 **Ballou MA, Gomes RC & DePeters EJ** 2009. Supplemental fish oil does not alter immune  
329 competence or the pathophysiological response to an intramammary infusion of endotoxin  
330 in peri-partum multiparous Holsten cows. *Journal of Dairy Research* **76** 165-172.
- 331 **Bauman DE & Griinari JM** 2003 Nutritional regulation of milk fat synthesis. *Annual Review of*  
332 *Nutrition* **23** 203-227
- 333 **Bichi E, Hervas G, Toral PG, Llor JJ & Frutos P** 2013 Milk fat depression induced by dietary  
334 marine algae in dairy ewes: Persistency of milk fatty acid composition and animal  
335 performance responses. *Journal of Dairy Science* **96** 524-532
- 336 **Calder PC** 2014 Very long chain omega-3 (*n*-3) fatty acids and human health. *European Journal*  
337 *of Lipid Science and Technology* **116** 1280-1300
- 338 **Chilliard Y, Ferlay A & Doreau M** 2001 Effect of different types of forages, animal fat or marine  
339 oils in cow's diet on milk fat secretion and composition, especially conjugated linoleic acid  
340 (CLA) and polyunsaturated fatty acids. *Livestock Production Science* **70** 31 - 48
- 341 **Cozzi G, Ravarotto L, Gottardo F, Stefani AL, Contiero B, Moro L, Brscic M & Dalvit P**  
342 2011 Short communication: Reference values for blood parameters in Holstein dairy  
343 cows: Effects of parity, stage of lactation, and season of production. *Journal of Dairy*  
344 *Science* **94** 3895- 3901
- 345 **Dirandeh E, Towhidi A, Zeinoaldini S, Ganjkanlou M, Pirsaraei ZA & Fouladi-Nashta A**  
346 2013 Effects of different polyunsaturated fatty acid supplementations during the  
347 postpartum periods of early lactating dairy cows on milk yield, metabolic responses, and  
348 reproductive performances. *Journal of Animal Science* **91** 713-721
- 349 **Dong Hyeon K, Hyuk Jun L, Sardar AM, Adegbola AT & Sam Churl K** 2016 Effects of  
350 dietary n-6/n-3 fatty acid ratio on nutrient digestibility and blood metabolites of Hanwoo  
351 heifers. *Animal Science Journal* **87** 46-53

352 **Ferguson JD, Galligan DT & Thomsen N** 1994 Principal descriptors of body condition score  
353 in Holstein cows. *Journal of Dairy Science* **77** 2695-2703

354 **Gulliver CE, Friend MA, King BJ & Clayton EH** 2012 The role of omega-3 polyunsaturated  
355 fatty acids in reproduction of sheep and cattle. *Animal Reproduction Science* **131** 9-22

356 **LeBlanc SJ** 2012 Interactions of metabolism, inflammation, and reproductive tract health in  
357 the postpartum period in dairy cattle. *Reproduction in Domestic Animals* **47** 18-30

358 **Lock AL, Tyburczy C, Dwyer DA, Harvatine KJ, Destailats F, Mouloungui Z, Candy L &**  
359 **Bauman DE** 2007 Trans-10 octadecenoic acid does not reduce milk fat synthesis in dairy  
360 cows. *The Journal of Nutrition* **137** 71-76

361 **Marques JA, Del Valle TA, Ghizzi LG, Zilio EMC, Gheller LS, Nunes AT, Silva TBP, Dias**  
362 **MSS, Grigoletto NTS, Koontz AF, da Silva GG & Rennó FP** 2019 Increasing dietary  
363 levels of docosahexaenoic acid-rich microalgae: Ruminal fermentation, animal  
364 performance and milk fatty acid profile of mid-lactating dairy cows. *Journal of Dairy*  
365 *Science* **102** 5054-5065

366 **Mattos R, Staples CR, Arteche A, Wiltbank MC, Diaz FJ, Jenkins TC & Thatcher WW** 2004  
367 The effects of feeding FO on uterine secretions of PGF<sub>2</sub> $\alpha$ , milk composition, and metabolic  
368 status of periparturient Holstein cows. *Journal of Dairy Science* **87** 921 - 932

369 **McArt JAA, Nydam DV, Oetzel GR, Overton TR & Ospina PA** 2013 Elevated non-esterified  
370 fatty acids and  $\beta$ -hydroxybutyrate and their association with transition dairy cow  
371 performance. *The Veterinary Journal* **198** 560-570

372 **Otto JR, Freeman MJ, Malau-Aduli BS, Nichols PD, Lane PA & Malau-Aduli AEO** 2014  
373 Reproduction and fertility parameters of dairy cows supplemented with omega-3 fatty  
374 acid-rich canola oil. *Annual Research and Review in Biology* **10** 1611-1636

375 **Petit HV, Dewhurst RJ, Scollan, ND, Proulx JG, Khalid M, Haresign W, Twagiramungi H**  
376 **& Mann GE** 2002. Milk production and composition, ovarian function and prostaglandin  
377 secretion of dairy cows fed omega-3 fats. *Journal of Dairy Science* **85** 889-899



378 **Ribeiro ES, Greco LF, Bisinotto RS, Lima FS, Thatcher WW & Santos JEP** 2016b  
379 Biology of preimplantation conceptus at the onset of elongation in dairy cows.  
380 *Biology of Reproduction* **94** 97, 1-18.

381 **Robinson RS, Pushpakumara PG, Cheng Z, Peters AR, Abayasekara DR & Wathes DC**  
382 2002. Effects of dietary polyunsaturated fatty acids on ovarian and uterine function in  
383 lactating dairy cows. *Reproduction* **124** 119-131

384 **Rodney RM, Celi P, Scott W, Breinhild K & Lean IJ** 2015 Effects of dietary fat on fertility of  
385 dairy cattle: A meta-analysis and meta-regression. *Journal of Dairy Science* **98** 5601-  
386 5620.

387 **Rodriguez-Herrera M, Khatri Y, Marsh SP, Posri W & Sinclair LA** 2017 Feeding microalgae  
388 at a high level to finishing heifers increases the long-chain n-3 fatty acid composition of beef  
389 with only small effects on the sensory quality. *International Journal of Food Science and*  
390 *Technology* **53** 1405-1413

391 **Shingfield KJ, Reynolds CK, Hervás G, Griinari JM, Grandison AS & Beaver DE** 2006  
392 Examination of the persistency of milk fatty acid composition responses to fish oil and  
393 sunflower oil in the diet of dairy cows. *Journal of Dairy Science* **89** 714-732

394 **Sinedino LDP, Honda PM, Souza LRL, Lock AL, Boland MP, Staples CR, Thatcher WW &**  
395 **Santos JEP** 2017 Effects of supplementation with docosahexaenoic acid on reproduction  
396 of dairy cows. *Reproduction* **153** 707-723

397 **Sinclair LA, Cooper SL, Chikunya S, Wilkinson RG, Hallett KG, Enser M & Wood JD.** 2005  
398 Biohydrogenation of n-3 polyunsaturated fatty acids in the rumen and their effects on  
399 microbial metabolism and plasma fatty acid concentration in sheep. *Animal Science* **81**  
400 239–248

401 **Till BE, Huntington JA, Posri, W, Early, R, Taylor-Pickard J & Sinclair LA** 2019 Influence  
402 of rate of inclusion of microalgae on the sensory characteristics and fatty acid  
403 composition of cheese and performance of dairy cows. *Journal of Dairy Science* (in  
404 press)

405 **Trevisi E, Amadori M, Archetti I, Lacetera N & Bertoni G** 2011a Inflammatory response and  
406 acute phase proteins in the transition period of high-yielding dairy cows, In: Acute Phase  
407 Proteins as Early Non-Specific Biomarkers of Human and Veterinary Diseases, Ed. F.  
408 Veas, pp 355-379, IntechOpen, UK.

409 **Trevisi E, Grossi P, Picciolo Capelli F. Cogrossi S & Bertoni G** 2011b Attenuation of  
410 inflammatory response phenomena in periparturient dairy cows by the administration of  
411 an  $\omega$ 3 rumen protected supplement containing vitamin E. *Italian Journal of Animal*  
412 *Science* **10** 277-286

413 **Vanbergue E, Hurtaud C, & Peyraud J** 2018 Effects of new n-3 fatty acid sources on milk fatty  
414 acid profile and milk fat properties in dairy cows. *Journal of Dairy Research* **85** 265-272

415 **Van Soest PJ, Robertson JB & Lewis BA** 1991 Methods for dietary fiber, neutral detergent  
416 fiber and non-starch polysaccharides in relation to animal nutrition. *Journal of Dairy*  
417 *Science* **74** 3583-3597

418 **Vlcek M, Andriikova M, Barbato O, Bina V, Boland MP, Dolezel R, Lapatarova M & Cech**  
419 **S** 2017 Supplementation of dairy cows with docosahexaenoic acid did not affect ovarian  
420 activity. *Czech Journal of Animal Science* **62** 457-465

421 **Zarate R, El Jaber-Vazdekis N, Tejera N, Perez JA & Rodriguez C** 2017 Significance of  
422 long chain polyunsaturated fatty acids in human health. *Clinical and Translational*  
423 *Medicine* **6** 25

424

**Table 1.** Diet composition (kg/kg DM) of the pre-study and study diets that contained no SCIM (Control) or 100 g of microalgae per cow per day (SCIM)

Ingredient	Pre-study	Basal diet	
Maize silage	0.350	0.413	
Grass silage	-	0.130	
Lucerne silage	0.152	-	
Chopped wheat straw	0.019	-	
Rapeseed meal	0.059	0.065	
Wheat distillers dark grains	0.071	0.078	
Soya bean meal	0.030	0.065	
Palm kernel meal	0.020	0.022	
Molasses	0.006	0.007	
Caustic wheat	0.114	0.109	
Distillery syrup <sup>1</sup>	0.040	-	
Soya hulls	0.060	0.078	
Food industry by product <sup>2</sup>	0.039	-	
Rumen protected fat <sup>3</sup>	0.007	0.013	
Rumen protected fat <sup>4</sup>	0.007	-	
Minerals and vitamins	0.015	0.006	
Chemical composition		Control <sup>5</sup>	SCIM <sup>5</sup>
Organic matter	930	928	928
Crude protein	166	163	161
NDF	375	419	419
Fatty acid (g/kg DM)			
C14:0	1.4	0.9	1.0
C16:0	15.8	10.0	12.6
C18:0	1.3	0.9	0.9
C18:1 n-9	8.6	7.9	8.3
C18:2 n-6	10.4	10.6	10.0
C18:3 n-3	1.7	1.7	1.3
C22:5 n-3	0.00	0.00	0.01
C22:6 n-3	0.00	0.00	0.7

<sup>1</sup>Spey syrup; KW Feeds, Ternhill, UK. <sup>2</sup>Sweetstarch: a by-product from the bakery, confectionary, pastry and breakfast cereal industries; KW Feeds, Ternhill, UK. <sup>3</sup>Megalac, a calcium salt of palm fatty acids, Volac, Royston, UK). <sup>4</sup>Butterfat Extra, a calcium salt of palm fatty acids fatty acids, Trident Feeds, Peterborough, UK. <sup>5</sup>The SCIM group received the basal ration with an additional 100 g/cow/day of microalgae, and the Control group received the basal ratio with an additional 100 g/cow/day of an equal mixture of a rolled wheat/sugarbeet feed mixture.

**Table 2.** Animal performance and blood metabolites in dairy cows fed no SCIM (Control) or 100 g of microalgae per cow per day (SCIM)

	Treatment		SED		
	Control	SCIM		D	T
DM intake (kg/d)	22.1	22.0	0.70	0.905	<0.001
Milk yield (kg/d)	39.6	39.9	0.78	0.980	<0.001
Milk fat (g/kg)	37.5	36.9	1.59	0.702	0.048
Fat yield (kg/d)	1.52	1.46	0.063	0.401	0.013
Milk protein (g/kg)	31.3	31.5	0.55	0.670	<0.001
Protein yield (g/kg)	1.27	1.25	0.034	0.584	<0.001
Live weight (kg)	653	651	12.0	0.895	<0.001
Live weight change, kg/d	0.29	0.17	0.084	0.179	--
Milk SCC (log <sub>e</sub> )	3.97	3.87	0.217	0.617	0.436
Body condition	2.69	2.81	0.071	0.115	0.837
Body condition change	0.04	-0.08	0.090	0.191	--
3-OHB (mmol/L)	1.07	1.12	0.087	0.550	0.457
Glucose (mmol/L)	2.82	2.83	0.075	0.814	<0.001
NEFA (mmol/L)	0.18	0.21	0.031	0.399	0.061

<sup>1</sup>Main effects of diet (D), time (T), and their interaction (D x T). There was no diet x treatment interaction except for plasma glucose, which was approximately 0.1 mmol/L higher in week 2 and 0.1 mmol/L lower in week 8 ( $P < 0.05$ ) in cows fed the Control compared to SCIM.

**Table 3.** Milk fatty acid composition (g/100g of FA) of dairy cows fed no SCIM (Control) or 100 g of microalgae per cow per day (SCIM)

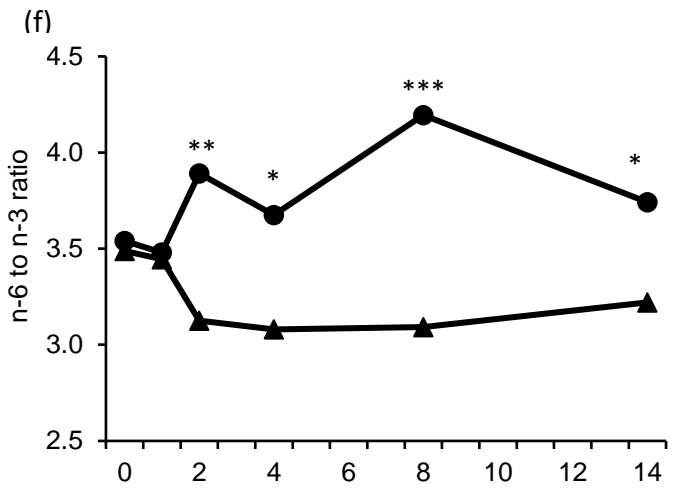
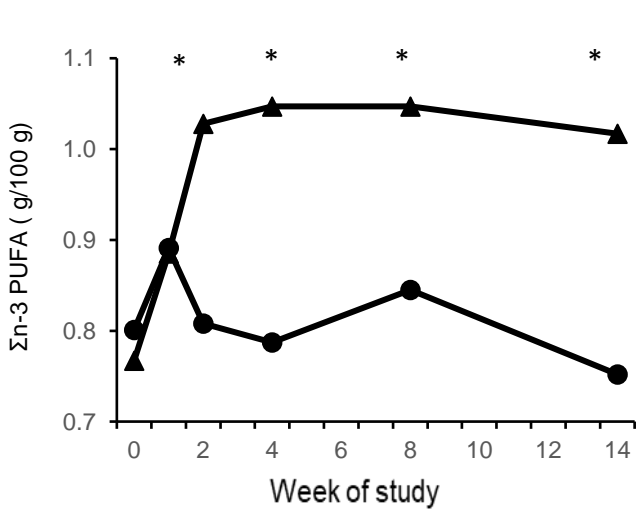
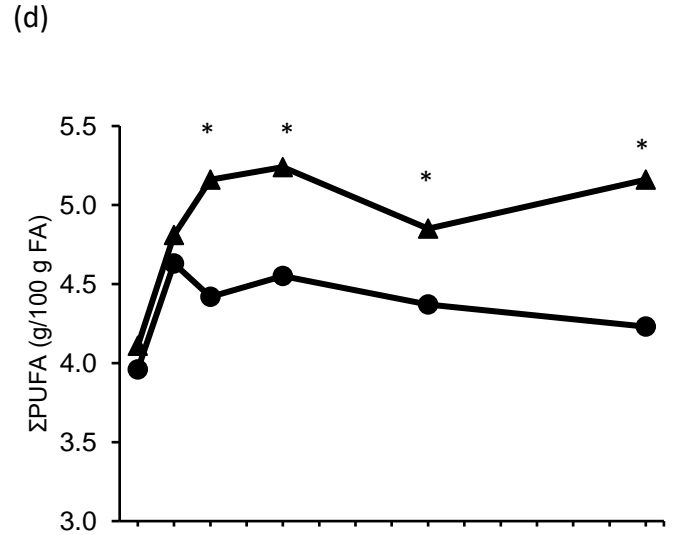
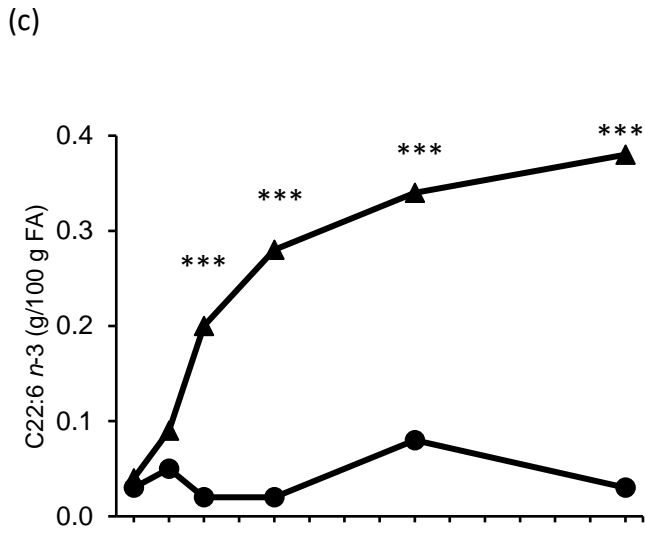
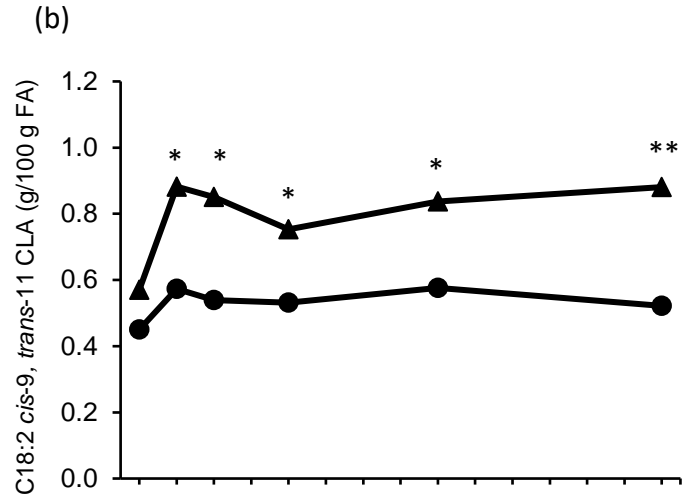
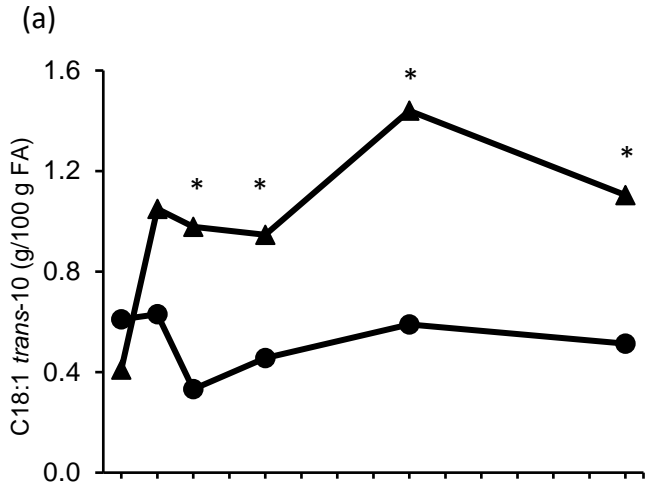
Fatty acid (g/100 g)	Treatment			P value <sup>1</sup>		
	Control	SCIM	SED	D	T	D x T
C4:0	2.37	2.37	0.083	0.969	<0.001	0.727
C6:0	1.70	1.67	0.070	0.877	0.002	0.737
C8:0	1.18	1.15	0.045	0.624	0.052	0.355
C10:0	2.58	2.48	0.137	0.449	0.009	0.299
C12:0	3.33	3.08	0.176	0.174	<0.001	0.540
C14:0	10.4	9.90	0.309	0.164	<0.001	0.217
C14:1 n-5	0.91	0.83	0.053	0.132	<0.001	0.430
C15:0	1.04	0.98	0.040	0.146	0.002	0.345
C16:0	31.0	30.6	0.616	0.507	0.124	0.250
C16:1 n-7	0.51	0.52	0.020	0.816	0.013	0.361
C17:0	0.51	0.52	0.017	0.845	<0.001	0.228
C17:1	0.26	0.26	0.020	0.924	<0.001	0.488
C18:0	8.38	7.90	0.233	0.058	0.131	0.215
C18:1 t-8	0.26	0.44	0.034	0.002	<0.001	0.130
C18:1 t-9	0.24	0.34	0.019	<.001	0.506	0.176
C18:1 t-10	0.55	0.94	0.166	0.034	0.026	0.033
C18:1 t-11	0.84	1.22	0.101	0.002	0.109	0.356
C18:1 t-12	0.48	0.56	0.046	0.088	0.009	0.152
C18:1 n-9	21.1	20.4	0.87	0.456	<0.001	0.069
C18:2 n-6	2.93	2.99	0.102	0.620	0.009	0.205
C20:0	0.13	0.13	0.009	0.876	0.023	0.680
C18:3 n-3	0.48	0.47	0.023	0.789	0.109	0.012
C18:2 c-9, t-11 CLA	0.57	0.75	0.054	<.001	0.002	0.049
C18:2 t-10, c-12 CLA	0.05	0.04	0.005	0.958	<0.001	0.947
C22:0	0.12	0.08	0.011	0.002	0.260	<0.001
C20:3 n-6	0.05	0.07	0.006	0.034	0.008	0.062
C20:3 n-3	0.18	0.17	0.012	0.648	0.129	0.216
C20:5 n-3	0.08	0.09	0.009	0.376	<0.001	0.242
C22:6 n-3	0.04	0.22	0.015	<.001	<0.001	<.001
Indices						
ΣSFA	62.9	60.7	1.06	0.059	0.150	0.423
ΣMUFA	26.1	26.7	0.97	0.570	<0.001	0.272
ΣPUFA	4.37	4.80	0.151	0.012	<0.001	0.002
Σn-3	0.83	0.97	0.039	0.002	0.121	0.023
Σn-6	2.96	3.03	0.100	0.505	<0.001	0.092
n-6:n-3	3.75	3.24	0.184	0.003	0.817	0.032

<sup>1</sup>Main effects of diet (D), time (T), and their interaction (D x T)

**Table 4.** Total plasma lipid fatty acid composition (g/100g of FA) of dairy cows fed no SCIM (Control) or 100 g of microalgae/cow per day (SCIM)

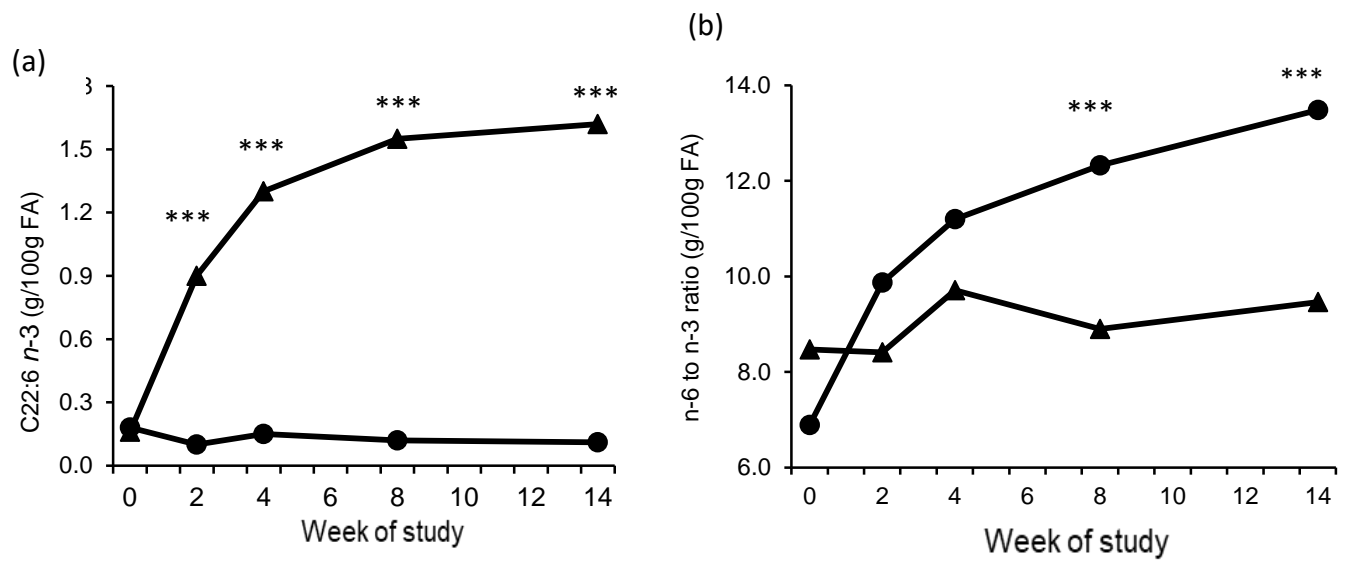
Fatty acid (g/100 g)	Treatment			P value <sup>1</sup>		
	Control	SCIM	SED	D	T	D x T
C14:0	0.82	0.66	0.103	0.141	<0.001	0.084
C14:1 n-5	0.18	0.13	0.021	0.112	<0.008	0.482
C15:0	0.40	0.42	0.015	0.241	<0.001	0.436
C16:0	12.1	12.4	0.36	0.363	<0.001	0.845
C16:1 n-7	0.78	0.77	0.074	0.854	<0.001	0.859
C17:0	0.63	0.62	0.027	0.682	<0.001	0.497
C18:0	15.3	14.3	0.33	0.016	0.532	0.027
C18:1 t 6-8	0.10	0.14	0.012	0.014	0.003	0.291
C18:1 t-9	0.13	0.16	0.022	0.151	0.038	0.388
C18:1 t-10	0.17	0.31	0.057	0.029	0.189	0.012
C18:1 t-11	0.44	0.64	0.045	<0.001	<0.001	0.056
C18:1 t-12	0.37	0.39	0.020	0.317	<0.001	0.349
C18:1 t-15	0.13	0.13	0.008	0.902	0.004	0.489
C18:1 c-9	8.45	7.67	0.387	0.070	<0.001	0.577
C18:2 n-6	44.2	45.6	0.70	0.067	<0.001	0.259
C20:0	0.64	0.41	0.039	<0.001	<0.001	<0.001
C18:3 n-3	3.34	3.60	0.157	0.120	<0.001	0.035
ΣCLA	0.10	0.12	0.009	0.053	<0.001	0.333
C20:4 n-6	1.75	1.56	0.073	0.022	<0.001	<0.001
C20:5 n-3	0.47	0.50	0.040	0.388	<0.001	0.065
C22:5 n-6	0.29	0.17	0.042	0.014	0.033	0.093
C22:5 n-3	0.71	0.53	0.041	0.001	<0.001	0.065
C22:6 n-3	0.13	1.11	0.028	<0.001	<0.001	<0.001
Indices						
ΣSFA	31.0	29.7	0.48	0.017	<0.001	0.014
ΣMUFA	12.7	12.3	0.45	0.318	<0.001	0.722
ΣPUFA	52.6	54.3	0.85	0.077	<0.001	0.076
Σn-3	4.65	5.74	0.283	0.005	<0.001	<0.001
Σn-6	47.8	48.5	0.66	0.331	<0.001	0.492
n-6:n-3	10.35	8.61	0.821	0.132	<0.001	<0.001

<sup>1</sup>Main effects of diet (D), time (T), and their interaction (D x T)

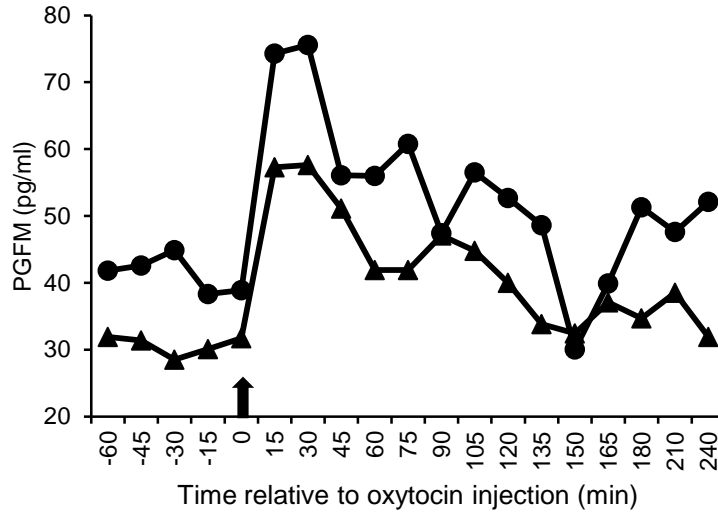


**Fig. 1.** Milk fat concentration of (a) C18:1 *trans*-10 (b) C18:2 *cis*-9 *trans*-11 CLA (c) C22:6 n-3, (d) sum of PUFA (e) sum of n-3 PUFA and (f) n-6 to n-3 ratio in dairy cows fed no SCIM (Control ●) or 100 g per cow per day of microalgae (SCIM ▲). SED = 0.25, 0.071, 0.030, 0.22 0.070 g/100g and 0.28 respectively. Within time points, treatments differ at  $P < 0.05$ ,  $P < 0.01$  or  $P < 0.001$  are denoted by \*, \*\* or \*\*\* respectively.





**Fig. 2.** Blood plasma fat concentration of (a) C22:6 n-3 (b) n-6 to n-3 PUFA ratio in dairy cows fed no SCIM (Control ●) or 100 g per cow per day of microalgae (SCIM ▲). SED = 0.045 g/100g and 1.07 respectively. Within time points, treatments differ at  $P < 0.05$ ,  $P < 0.01$  or  $P < 0.001$  are denoted by \*, \*\*, or \*\*\* respectively.



**Fig. 3.** Plasma 13,14-dihydro-15-keto PGF<sub>2α</sub> metabolite (PGFM) concentration after an oxytocin challenge (time = 0) in cows fed no SCIM (Control ●) or 100 g per cow per day of microalgae (SCIM ▲). Arrow represents when oxytocin was administered. SED = 11.3 pg/ml. Significance for Diet, Time and D x T = 0.307, 0.003 and 0.351 respectively. For the Control and SCIM, peak value = 67.5 and 73.9 pg/ml (SED 17.61; *P* = 0.731) and area under curve = 2236 and 4046 (SED = 987.0; *P* = 0.126) respectively.