

# *More than smell – COVID-19 is associated with severe impairment of smell, taste, and chemesthesis*

Article

Published Version

Creative Commons: Attribution-Noncommercial 4.0

Open Access

Parma, V., Ohla, K., Veldhuizen, M. G., Niv, M. Y., Kelly, C. E., Bakke, A. J., Cooper, K. W., Bouysset, C., Pirastu, N., Dibattista, M., Kaur, R., Liuzza, M. T., Pepino, M. Y., Schopf, V., Pereda-Loth, V., Olsson, S. B., Gerkin, R. C., Dominguez, P. R., Albayay, J., Farruggia, M. C., Bhutani, S., Fjaeldstad, A. W., Kumar, R., Menini, A., Bensafi, M., Sandell, M., Konstantinidis, I., Di Pizio, A., Genovese, F., Öztürk, L., Thomas-Danguin, T., Frasnelli, J., Boesveldt, S., Saatci, Ö., Saraiva, L. R., Lin, C., Golebiowski, J., Hwang, L.-D., Ozdener, M. H., Guardia, M. D., Laudamiel, C., Ritchie, M., Havlicek, J., Pierron, D., Roura, E., Navarro, M., Nolden, A. A., Lim, J., Whitcroft, K. L., Colquitt, L. R., Ferdenzi, C., Brindha, E. V., Altundag, A., Maachi, A., Nunez-Parra, A., Patel, Z. M., Fiorucci, S., Philpott, C. M., Smith, B. C., Lundstrom, J. N., Mucignat, C., Parker, J. K. ORCID: <https://orcid.org/0000-0003-4121-5481>, van den Brink, M., Schmuker, M., Fischmeister, F. P. S., Heinbockel, T., Shields, V. D. C., Faraji, F., Santamaria, E., Fredborg, W. E. A., Morini, G., Olofsson, J. K., Jalessi, M., Karni, N., D'Errico, A., Alizadeh, R., Pellegrino, R., Meyer, P., Huart, C., Chen, B., Soler, G. M., Alwashahi, M. K., Welge-Lussen, A., Freiherr, J., de Groot, J. H. B., Klein, H., Okamoto, M., Singh, P. B., Hsieh, J. W., Reed, D. R., Hummel,

T., Munger, S. D. and Hayes, J. E. (2020) More than smell – COVID-19 is associated with severe impairment of smell, taste, and chemesthesis. *Chem Senses*, 45 (7). pp. 609-622. ISSN 1464-3553 doi: <https://doi.org/10.1093/chemse/bjaa041>  
Available at <https://centaur.reading.ac.uk/91214/>

It is advisable to refer to the publisher's version if you intend to cite from the work. See [Guidance on citing](#).

To link to this article DOI: <http://dx.doi.org/10.1093/chemse/bjaa041>

Publisher: Oxford Academic

All outputs in CentAUR are protected by Intellectual Property Rights law, including copyright law. Copyright and IPR is retained by the creators or other copyright holders. Terms and conditions for use of this material are defined in the [End User Agreement](#).

[www.reading.ac.uk/centaur](http://www.reading.ac.uk/centaur)

## **CentAUR**

Central Archive at the University of Reading

Reading's research outputs online

Original Article

# More Than Smell—COVID-19 Is Associated With Severe Impairment of Smell, Taste, and Chemesthesis

Valentina Parma<sup>1,\*</sup>, Kathrin Ohla<sup>2,\*</sup>, Maria G. Veldhuizen<sup>3,\*</sup>, Masha Y. Niv<sup>4</sup>, Christine E. Kelly<sup>5</sup>, Alyssa J. Bakke<sup>6</sup>, Keiland W. Cooper<sup>7</sup>, Cédric Bouysset<sup>8</sup>, Nicola Pirastu<sup>9</sup>, Michele Dibattista<sup>10</sup>, Rishemjit Kaur<sup>11</sup>, Marco Tullio Liuzza<sup>12</sup>, Marta Y. Pepino<sup>13</sup>, Veronika Schöpf<sup>14</sup>, Veronica Pereda-Loth<sup>15</sup>, Shannon B. Olsson<sup>16</sup>, Richard C. Gerkin<sup>17</sup>, Paloma Rohlfs Domínguez<sup>18</sup>, Javier Albayay<sup>19</sup>, Michael C. Farruggia<sup>20</sup>, Surabhi Bhutani<sup>21</sup>, Alexander W. Fjaeldstad<sup>22</sup>, Ritesh Kumar<sup>23</sup>, Anna Menini<sup>24</sup>, Moustafa Bensafi<sup>25</sup>, Mari Sandell<sup>26,27</sup>, Iordanis Konstantinidis<sup>28</sup>, Antonella Di Pizio<sup>29</sup>, Federica Genovese<sup>30</sup>, Lina Öztürk<sup>3</sup>, Thierry Thomas-Danguin<sup>31</sup>, Johannes Frasnelli<sup>32</sup>, Sanne Boesveldt<sup>33</sup>, Özlem Saatci<sup>34</sup>, Luis R. Saraiva<sup>30,35</sup>, Cailu Lin<sup>30</sup>, Jérôme Golebiowski<sup>8</sup>, Liang-Dar Hwang<sup>36</sup>, Mehmet Hakan Ozdener<sup>30</sup>, Maria Dolors Guàrdia<sup>37</sup>, Christophe Laudamiel<sup>38</sup>, Marina Ritchie<sup>39</sup>, Jan Havlíček<sup>40</sup>, Denis Pierron<sup>41</sup>, Eugeni Roura<sup>42</sup>, Marta Navarro<sup>42</sup>, Alissa A. Nolden<sup>43</sup>, Juyun Lim<sup>44</sup>, Katherine L. Whitcroft<sup>45</sup>, Lauren R. Colquitt<sup>30</sup>, Camille Ferdenzi<sup>25</sup>, Evelyn V. Brindha<sup>46</sup>, Aytug Altundag<sup>47</sup>, Alberto Macchi<sup>48</sup>, Alexia Nunez-Parra<sup>49</sup>, Zara M. Patel<sup>50</sup>, Sébastien Fiorucci<sup>8</sup>, Carl M. Philpott<sup>51</sup>, Barry C. Smith<sup>52</sup>, Johan N. Lundström<sup>30,53</sup>, Carla Mucignat<sup>54</sup>, Jane K. Parker<sup>55</sup>, Mirjam van den Brink<sup>56</sup>, Michael Schmuker<sup>23</sup>, Florian Ph. S. Fischmeister<sup>57</sup>, Thomas Heinbockel<sup>58</sup>, Vonnie D. C. Shields<sup>59</sup>, Farhoud Faraji<sup>60</sup>, Enrique Santamaría<sup>61</sup>, William E.A. Fredborg<sup>62</sup>, Gabriella Morini<sup>63</sup>, Jonas K. Olofsson<sup>62</sup>, Maryam Jalessi<sup>64</sup>, Noam Karni<sup>65</sup>, Anna D'Errico<sup>66</sup>, Rafieh Alizadeh<sup>67</sup>, Robert Pellegrino<sup>68</sup>, Pablo Meyer<sup>69</sup>, Caroline Huart<sup>70</sup>, Ben Chen<sup>71</sup>, Graciela M. Soler<sup>72</sup>, Mohammed K. Alwashahi<sup>73</sup>, Antje Welge-Lüssen<sup>74</sup>, Jessica Freiherr<sup>75</sup>, Jasper H. B. de Groot<sup>76</sup>, Hadar Klein<sup>4</sup>, Masako Okamoto<sup>77</sup>, Preet Bano Singh<sup>78</sup>, Julien W. Hsieh<sup>79</sup>, GCCR Group Author<sup>†</sup>, Danielle R. Reed<sup>30</sup>, Thomas Hummel<sup>80</sup>, Steven D. Munger<sup>81,82</sup>, and John E. Hayes<sup>6</sup>

<sup>1</sup>Department of Psychology, Temple University, 1701 N 13th St, Philadelphia, PA 19122, USA, <sup>2</sup>Institute of Neuroscience and Medicine (INM-3), Research Center Jülich, Wilhelm-Johnen-Straße, 52428 Jülich, Germany, <sup>3</sup>Department of

Anatomy, Faculty of Medicine, Mersin University, Çiftlikköy Campus, Yenişehir, 33343 Mersin, Turkey, <sup>4</sup>Institute of Biochemistry, Food Science and Nutrition, The Hebrew University of Jerusalem, PO Box 12, Rehovot 7610001, Israel, <sup>5</sup>AbScent, 14 London Street, Andover, Hampshire SP10 2PA, UK, <sup>6</sup>Department of Food Science, The Pennsylvania State University, Erickson Food Science Building, University Park, PA 16802, USA, <sup>7</sup>Center for the Neurobiology of Learning and Memory, University of California and Qureshey Research Laboratory, 506 C Student Center, Irvine, CA 92697-0001, USA, <sup>8</sup>Institut de Chimie de Nice, UMR CNRS 7272, Université Côte d'Azur, 28 Avenue Valrose, 06108 Nice, France, <sup>9</sup>Centre for Global Health Research, Usher Institute, The University of Edinburgh, Old Medical School, Teviot Place, Edinburgh EH8 9AG, UK, <sup>10</sup>Department of Basic Medical Sciences, Neuroscience and Sensory Organs, Università degli Studi di Bari A. Moro, P.zza G. Cesare 11, Bari 70124, Italy, <sup>11</sup>CSIR-Central Scientific Instruments Organisation, Sec 30-C, Chandigarh 160030, India, <sup>12</sup>Department of Medical and Surgical Sciences, "Magna Graecia" University of Catanzaro, Viale Europa (Loc. Germaneto), 88100 Catanzaro, Italy, <sup>13</sup>Department of Food Science and Human Nutrition and Division of Nutritional Sciences, University of Illinois at Urbana Champaign, 905 South Goodwin Avenue, Urbana, IL 61801, USA, <sup>14</sup>Department of Biomedical Imaging and Image-guided Therapy, Medical University of Vienna, Währinger Gürtel 18-20, 1090 Vienna, Austria, <sup>15</sup>Laboratoire d'Anthropologie Moléculaire et Imagerie de Synthèse, UMR 5288 CNRS, Université de Toulouse, 31073 Toulouse, France, <sup>16</sup>National Centre for Biological Sciences, Tata Institute of Fundamental Research, GVK Campus, Bellary Road, Bengaluru 560065, India, <sup>17</sup>School of Life Sciences, Arizona State University, PO Box 874501, Tempe, AZ 85287, USA, <sup>18</sup>Department of Psychology and Anthropology, University of Extremadura, Avenida de la Universidad, s/n, 10003 Cáceres, Spain, <sup>19</sup>Department of General Psychology, University of Padova, Via Venezia 8, 35131 Padova, Italy, <sup>20</sup>Department of Psychiatry, Yale University School of Medicine, 300 George Street, New Haven, CT 06511, USA, <sup>21</sup>School of Exercise and Nutritional Sciences, 5500 Campanile Drive, San Diego State University, San Diego, CA 92182, USA, <sup>22</sup>Flavour Clinic, Department of Otorhinolaryngology, Regional Hospital West Jutland, Central Denmark Region, Laegaardvej 12, 7500 Holstebro, Denmark, <sup>23</sup>Biocomputation Group, Department of Computer Science, University of Hertfordshire, Hatfield AL10 9AB, UK, <sup>24</sup>Neuroscience Area, International School for Advanced Studies, SISSA, Via Bonomea 265, 34136 Trieste, Italy, <sup>25</sup>Neuropop Team, Lyon Neuroscience Research Center, CNRS UMR5292—INSERM U1028—University Claude Bernard Lyon 1, 95 bd Pinel, 69500 Bron, France, <sup>26</sup>Department of Food and Nutrition, University of Helsinki, PO Box 66, FI-00014 Helsinki, Finland, <sup>27</sup>Functional Foods Forum, University of Turku, FI-20014 Turku, Finland, <sup>28</sup>2nd Academic Otorhinolaryngology Department, Aristotle University, Efkaripia Ring Road, PO Box 56403, Thessaloniki, Greece, <sup>29</sup>Leibniz-Institute for Food Systems Biology at the Technical University of Munich, Lise-Meitner-Str. 34, 85354 Freising, Germany, <sup>30</sup>Monell Chemical Senses Center, 3500 Market St, Philadelphia, PA 19104, USA, <sup>31</sup>CSGA—Centre for Taste and Feeding Behavior, INRAE, CNRS, AgroSup Dijon, Université Bourgogne Franche-Comté, 17 rue Sully, F-21000 Dijon, France, <sup>32</sup>Department of Anatomy, Université du Québec à Trois-Rivières, 3351, boul. des Forges, Trois-Rivières, QC, Canada G8Z 4M3, <sup>33</sup>Division of Human Nutrition and Health, Wageningen University, Stippeneng 4, 6708 WE Wageningen, the Netherlands, <sup>34</sup>Department of Otorhinolaryngology, Medical Science University, Namik Kemal Street, No:7 Emek, Sancaktepe-İstanbul 34785, Turkey, <sup>35</sup>Sidra Medicine, Out Patient Clinic, C6-111, PO Box 26999, Doha, Qatar, <sup>36</sup>The University of Queensland Diamantina Institute, The University of Queensland, 37 Kent St, Woolloongabba, QLD 4102, Australia, <sup>37</sup>IRTA-Food Technology Programme, IRTA, Finca Camps i Armet, E-17121 Monells, Girona, Spain, <sup>38</sup>DreamAir LLC, Department of Scent Engineering, 1181 Broadway, New York, NY 10001, USA, <sup>39</sup>Department of Neurobiology and Behavior, University of California, Irvine, 519 Ring Rd, Irvine, CA 92697-4545, USA, <sup>40</sup>Department of Zoology, Charles University, Viničná 1594, 128 00 Nové Město, Czechia, <sup>41</sup>Équipe de Médecine Evolutive, UMR5288 CNRS/Université Toulouse III, faculté de chirurgie dentaire, 3 Chemin des Maraîchers, Toulouse 31400, France, <sup>42</sup>Centre for Nutrition and Food Sciences, Queensland Alliance for Agriculture and Food Innovation, The University of Queensland, St Lucia, QLD 4072, Australia, <sup>43</sup>Department of Food Science, University of Massachusetts, 102 Holdsworth Way, Amherst, MA 01003, USA, <sup>44</sup>Department of Food Science and Technology, Oregon State University, Corvallis, OR 97331, USA, <sup>45</sup>Ear Institute, University College London, 332 Grays Inn Rd, London WC1X 8EE, UK, <sup>46</sup>Department of Electrical and Electronics Engineering, Karunya Institute of Technology and Sciences, Karunya Nagar, Coimbatore, Tamilnadu, India, <sup>47</sup>Otorhinolaryngology Department, Biruni University, 10.Yil Street, Protokol Yolu No: 45, 34010 Topkapı, Zeytinburnu, Istanbul, Turkey, <sup>48</sup>Italian Academy of Rhinology Asst Settelaighi—University of Insubriae, via Guicciardini 9, Varese 21100, Italy, <sup>49</sup>Department of Biology, Universidad de Chile, Las Palmeras 3425, Santiago 7800003, Chile, <sup>50</sup>Department of Otolaryngology—Head and Neck Surgery, Stanford University School of Medicine, 900 Blake Wilbur Drive, 3rd Floor, Palo Alto, CA 94304-2201, USA, <sup>51</sup>The Norfolk Smell and Taste Clinic, University of East Anglia, Norwich Research Park, Norwich NR4 7TJ, UK, <sup>52</sup>Centre for the Study of the Senses, Institute of Philosophy, School of Advanced Study, University of London, Malet Street, London WC1E 7HU, UK, <sup>53</sup>Department of Clinical Neuroscience, Karolinska Institutet, Nobels väg 9, 17177 Stockholm, Sweden, <sup>54</sup>Department of Molecular Medicine, University of Padova, via Marzolo 3, 35131 Padova, Italy, <sup>55</sup>Department of Food and Nutritional Sciences, University of Reading, Whiteknights, Reading RG6 6AP, UK, <sup>56</sup>Laboratory of Behavioural Gastronomy, Maastricht University Campus Venlo, Nassaustraat 36, 5911 BV Venlo, the Netherlands, <sup>57</sup>Institute of

Psychology, University of Graz, Universitätsplatz 2, 8010 Graz, Austria,<sup>58</sup>Department of Anatomy, College of Medicine, Howard University, 520 'W' St., N.W., Washington, DC 20059, USA,<sup>59</sup>Biological Sciences Department, Fisher College of Science and Mathematics, Towson University, 8000 York Road, Towson, MD 21252 USA,<sup>60</sup>Division of Otolaryngology, Head & Neck Surgery, University of California San Diego Health, 9300 Campus Point Drive, MC 7895 La Jolla, CA 92037-7895, USA,<sup>61</sup>Clinical Neuroproteomics Unit, Navarrabiomed, Complejo Hospitalario de Navarra (CHN), Universidad pública de Navarra (UPNA), Instituto de Investigación Sanitaria de Navarra (IDISNA), Proteored-ISCIII, Irunlarrea Street, 31008 Pamplona, Spain,<sup>62</sup>Department of Psychology, Stockholm University, Frescativägen, SE-11419 Stockholm, Sweden,<sup>63</sup>University of Gastronomic Sciences, Piazza Vittorio Emanuele II 9, Bra, Pollenzo 12042, CN, Italy,<sup>64</sup>Skull Base Research Center, The Five Senses Institute, Iran University of Medical Sciences, Rasoul Akram Hospital, Niayesh Str., Sattarkhan Ave., Tehran, Iran,<sup>65</sup>Internal Medicine Department, Hadassah Medical Center, Kiryat Hadassah, PO Box 12000, Jerusalem 91120, Israel,<sup>66</sup>Department of Molecular and Cellular Neurobiology, Goethe Universität Frankfurt, Goethe Universität Frankfurt, Max von Laue Strasse 13, 60438 Frankfurt am Main, Germany,<sup>67</sup>ENT and Head and Neck Research Center and Department, Hazrat Rasoul Hospital, The Five Senses Institute, Iran University of Medical Sciences, Iran University of Medical Sciences, Shahid Hemmat Highway, Tehran 1449614535, Iran,<sup>68</sup>Food Science Department, University of Tennessee, 2510 River Dr., Knoxville, TN 37996, USA,<sup>69</sup>Health Care and Life Sciences, IBM T. J. Watson Research Center, 1101 Kitchawan Road, Yorktown Heights, NY 10598, USA,<sup>70</sup>Department of Otorhinolaryngology, Cliniques Universitaires Saint-Luc, Avenue Hippocrate 10, 1200 Brussels, Belgium,<sup>71</sup>Department of Psychiatry, The Affiliated Brain Hospital of Guangzhou Medical University, No. 36, Mingxin Road, Liwan District, Guangzhou City 510370, China,<sup>72</sup>Department of Otorhinolaryngology, Buenos Aires University and GEOG (Grupo de Estudio de Olfato y Gusto), Calle Paraguay 1896, Piso 3. CABA (Ciudad Autónoma de Buenos Aires) C1121ABB, Argentina,<sup>73</sup>Surgery Department, ENT Division, Sultan Qaboos University Hospital, Al Khoud, Box 38,123 Muscat, Oman,<sup>74</sup>Department of Otorhinolaryngology, University Hospital Basel, Petersgraben 4, 4031 Basel, Switzerland,<sup>75</sup>Department of Psychiatry and Psychotherapy, Friedrich-Alexander-Universität Erlangen-Nürnberg, Schwabachanlage 6, 91054 Erlangen, Germany,<sup>76</sup>Department of Psychology, Utrecht University, Heidelberglaan 1, 3584 CS Utrecht, The Netherlands,<sup>77</sup>Department of Applied Biological Chemistry, The University of Tokyo, 1-1-1, Yayoi, Bunkyo-ku, Tokyo 113-8657, Japan,<sup>78</sup>Department of Oral Surgery and Oral Medicine, Faculty of Dentistry, University of Oslo, 1109 Blindern, 0317 Oslo, Norway,<sup>79</sup>Rhinology–Olfactology Unit, ENT Department, Geneva University Hospitals, Rue Gabrielle-Perret-Gentil 4, 1205 Geneva, Switzerland,<sup>80</sup>Department of Otorhinolaryngology, TU Dresden, Helmholtzstr. 10, 01069 Dresden, Germany,<sup>81</sup>Center for Smell and Taste, University of Florida, 1149 Newell Drive, Rm LG-101D, Gainesville, FL 32610-0127, USA,<sup>82</sup>Department of Pharmacology and Therapeutics, University of Florida, 1200 Newell Drive, ARB R5-234, Gainesville, FL 32610-0267, USA

Correspondence to be sent to John E. Hayes, Department of Food Science, Pennsylvania State University, 220 Erickson Food Science Building, University Park, PA 16802, USA. e-mail: [jeh40@psu.edu](mailto:jeh40@psu.edu)

\*These authors contributed equally to the work.

†Members of GCCR Group are listed above References section.

Editorial Decision 10 June 2020.

## Abstract

Recent anecdotal and scientific reports have provided evidence of a link between COVID-19 and chemosensory impairments, such as anosmia. However, these reports have downplayed or failed to distinguish potential effects on taste, ignored chemesthesis, and generally lacked quantitative measurements. Here, we report the development, implementation, and initial results of a multilingual, international questionnaire to assess self-reported quantity and quality of perception in 3 distinct chemosensory modalities (smell, taste, and chemesthesis) before and during COVID-19. In the first 11 days after questionnaire launch, 4039 participants (2913 women, 1118 men, and 8 others, aged 19–79) reported a COVID-19 diagnosis either via laboratory tests or clinical assessment. Importantly, smell, taste, and chemesthetic function were each significantly reduced compared to their status before the disease. Difference scores (maximum possible change  $\pm 100$ ) revealed a mean reduction of smell ( $-79.7 \pm 28.7$ , mean  $\pm$  standard deviation), taste ( $-69.0 \pm 32.6$ ), and chemesthetic ( $-37.3 \pm 36.2$ ) function during COVID-19. Qualitative changes in olfactory ability (parosmia and phantosmia) were relatively rare and correlated with smell loss. Importantly, perceived nasal obstruction did not account for smell loss. Furthermore, chemosensory impairments were similar between participants in the laboratory test and clinical assessment groups. These results show that COVID-19-associated chemosensory impairment is not limited to smell but also

affects taste and chemesthesis. The multimodal impact of COVID-19 and the lack of perceived nasal obstruction suggest that severe acute respiratory syndrome coronavirus strain 2 (SARS-CoV-2) infection may disrupt sensory-neural mechanisms.

**Key words:** head and neck surgery, olfaction, somatosensation

## Introduction

In late 2019, a new virus, severe acute respiratory syndrome coronavirus strain 2 (SARS-CoV-2), was reported in Wuhan, China (Zhu et al. 2020). The resulting COVID-19 disease has become a global pandemic with 3.18 million reported cases as of May 1, 2020 (World Health Organization 2020). When assessing SARS-CoV-2 infection, clinicians initially focused on symptoms such as fever, body aches, and dry cough. However, emerging reports suggest sudden olfactory loss (anosmia or hyposmia) may be prevalent in patients with COVID-19 (Menni et al. 2020; Vetter et al. 2020). Olfactory disorders have long been associated with viral upper respiratory tract infections (URI) that cause the common cold and flu, including influenza and parainfluenza viruses, rhinoviruses, and other endemic coronaviruses (Soler et al. 2020). Taste disorders have been known to occur during and after respiratory viral infection, as well (Hummel et al. 2011). One case report found anosmia presenting with SARS (Hwang 2006). Olfactory dysfunction due to viral infections may account for 11–45% of all olfactory disorders excluding presbyosmia (Nordin and Brömerson 2008). The estimated prevalence of COVID-19-associated olfactory impairment may be higher than in COVID-19-independent postviral olfactory loss; estimations range from 5% to 85% in self-report studies, with differences noted between mild and severe cases (Bagheri et al. 2020; Gane et al. 2020; Giacomelli et al. 2020; Haldrup et al. 2020; Hopkins et al. 2020; Lechien, Cabaraux, et al. 2020; Lechien, Chiesa-Estomba, et al. 2020; Mao et al. 2020; Menni et al. 2020; Yan, Faraji, Prajapati, Boone et al. 2020; Yan, Faraji, Prajapati, Ostrand 2020). When psychophysical odor identification tests are used, this prevalence ranges from 76% in Europe using the Sniffin' Sticks (Lechien, Chiesa-Estomba, et al. 2020) to 98% in Iran using the University of Pennsylvania Smell Identification Test (UPSIT) (Moein et al. 2020), though the severity of COVID-19 in these study cohorts may not be representative of the larger population. These anecdotes, preprints, letters, and peer-reviewed reports (for a review, see Pellegrino et al. 2020) describe chemosensory disturbances in COVID-19 with characteristics that are similar to those seen in common URIs, such as isolated sudden onset of anosmia (Gane et al. 2020), occurrence of anosmia in mild or asymptomatic cases of COVID-19 (Hopkins et al. 2020), and loss of taste (Lechien, Cabaraux, et al. 2020; Yan, Faraji, Prajapati, Boone et al. 2020). As of May 13, 2020, the European Centre for Disease Prevention and Control, the World Health Organization, and the following countries or regions have listed smell loss as a symptom of COVID-19: Argentina, Chile, Denmark, Finland, France, Italy, Luxembourg, New Zealand, Singapore, South Africa, Slovenia, Spain, Switzerland, The Netherlands, and the United States; many other countries or regions have not yet officially acknowledged smell loss as a symptom of COVID-19. To date, quantitative studies to determine the extent and detail of broad chemosensory changes in COVID-19 are rare, with the exception of 2 recent studies: Iravani et al. (2020) assessed odor intensity in a group of Swedish respondents, whereas Moein et al. (2020) tested a small sample of hospitalized Iranian patients with the UPSIT. We use 3 separate sensory modalities—smell, taste and chemesthesis—to sense our chemical environment in daily life.

The olfactory system (smell) detects volatile chemicals through olfactory sensory neurons in the nasal cavity. Odors in the external environment are sampled through the nostrils (orthonasal olfaction), whereas odors coming from food or drink in the mouth are sampled via the nasopharynx (retronasal olfaction). The gustatory system (taste) responds to nonvolatile compounds in the mouth that elicit sensations of sweet, salty, bitter, sour, and umami (savory). Finally, chemesthesis detects other chemicals, often found in herbs or spices that evoke sensations like burning, cooling, or tingling.

Although taste has occasionally been explored with respect to COVID-19 (e.g., Giacomelli et al. 2020; Yan, Faraji, Prajapati, Boone et al. 2020; Yan, Faraji, Prajapati, Ostrand 2020), chemesthesis remains unexamined in recent studies despite anecdotal reports that it may be similarly compromised in persons with COVID-19. Smell, taste, and chemesthesis are often conflated, mostly because they produce a single experience of flavor during eating (Rozin 1982; Spence et al. 2014; Duffy and Hayes 2019; Hayes 2019), and patients often report a loss of taste when, in fact, they are experiencing a loss of retronasal olfaction. Nevertheless, the olfactory and gustatory systems, along with parts of the somatosensory system that conveys chemesthesis, are separate sensory systems with distinct peripheral and central neural mechanisms (Shepherd 2006; Green 2012). To date, the impact of COVID-19 on each of these 3 chemosensory modalities remains poorly understood.

Chemosensory disturbances can result in quantitative reductions in smell or taste (i.e., anosmia/hyposmia and ageusia/hypogeusia, respectively) or qualitative changes in these senses (e.g., distortions of smell and taste, termed parosmia and dysgeusia, or phantom sensations, termed phantosmia and phantogeusia). These key distinctions have been neglected in previous reports. Because these phenomena are not necessarily correlated and have different mechanisms (Holbrook et al. 2005; Reden et al. 2007; Iannilli et al. 2019), understanding how COVID-19 impacts chemosensation in both quantitative and qualitative ways should provide important insights into the mechanisms by which the SARS-CoV-2 virus affects the chemical senses.

Ideally, validated testing of chemosensory function would be combined with a review of a patient's medical records, including laboratory test results (from viral swab or serology, "Lab Test") to confirm the infectious agent. Due to limited laboratory test availability in many countries, the necessity in some medical settings for social distancing, and a potentially large number of asymptomatic or mild cases, it has been impractical or impossible to conduct such chemosensory testing for many individuals with COVID-19. Additionally, in many countries where testing resources are limited, laboratory testing has been limited to the most severe cases. Another diagnosis method is a clinical assessment by a medical professional ("Clinical Assessment"), either in office or remotely via telemedicine. Thus, the method of diagnosis—Lab Test versus Clinical Assessment—may be associated with differences in symptom severity, including severity of chemosensory impairments. To account for possible differences in the severity of infection, as well as the availability of diagnosis options across countries, we collected information on diagnosis methods and compared chemosensory function between participants diagnosed with Lab Test versus Clinical Assessment.

Given all the issues raised above, we deployed a crowd-sourced, multilingual, online study with a global reach (as of May 1, 2020, deployed in 27 languages). This survey has the potential to provide reproducible data from a large number of participants around the world. In this preregistered report, we present data from 4039 participants who reported a COVID-19 diagnosis either via Lab Test or Clinical Assessment and who completed the questionnaire during the first 11 days the study was available online. Here, we address 2 main research questions. First, we asked what chemosensory changes are observed in participants with COVID-19 compared to before illness (i.e., within participants). Next, we asked whether the 2 diagnostic groups differ in chemosensory changes (i.e., between participants). For both diagnosis methods, we observed significant quantitative changes in smell, taste, and chemesthesis with COVID-19. Most chemosensory loss could not be accounted for by self-reported nasal obstruction, a factor commonly associated with diminished smell in other upper respiratory diseases (Doty 2001). Further, we found little incidence of qualitative changes in olfactory function, with only a small percentage of participants reporting distorted smells (consistent with parosmia) or phantom smells (consistent with phantosmia). Together, these results provide an initial assessment of comprehensive chemosensory impairments associated with COVID-19.

## Methods

### Preregistration

We preregistered our hypotheses and analyses on April 19, 2020, at 12:20 AM Eastern Daylight Time (EDT), before the data became available (data reflected questionnaires submitted between April 7, 2020, 6:00 AM EDT and April 18, 2020, at 8:34 AM EDT) (Veldhuizen et al. 2020). In line with the preregistration, and according to the Sequential Bayes Factor Design (section 2.3), one of the authors (A.J.B.) not involved in the development of the preregistration queried the database to check whether the minimum number of participants per group was reached. The data reported in this manuscript, along with analysis scripts, are available at OSF (<https://osf.io/a3vkw/>). The project is structured according to the research compendium created with the *rtools* package (Marwick 2019). The presented analyses are as preregistered, unless specified otherwise.

### The GCCR core questionnaire

The GCCR questionnaire (Supplementary Material), and included in the list of research tools to assess COVID-19 by the National Institutes of Health Office of Behavioral and Social Sciences Research [OBSSR; Anonymous 2020]) measures self-reported smell, taste, and chemesthesis function, as well as nasal blockage in participants with respiratory illness, including COVID-19, within the 2 weeks prior to completing the questionnaire. It was created iteratively through a crowd-sourced approach with a preliminary period of development and commentary across an international group of chemosensory experts, clinicians, and patients advocates. Relevant to the scope of the present manuscript, participants were asked to quantify their ability to smell, taste, and perceive cooling, tingling, and burning sensations (chemesthesis) before and during COVID-19 on separate, horizontally presented, 100-point visual analogue scales (VAS). Participants were also asked to quantify their perceived nasal obstruction on a 100-point VAS with “not at all blocked” and “completely blocked” as anchors. Framing the questions in terms of ability, rather than intensity, was driven by the desire to be readily

understood by participants without additional training or instructions and was informed by spontaneous patient reports, internet search trends, and in dialogue with patient advocates (e.g., we implicitly separated taste/chemesthesis experienced in the mouth from orthonasal smell as experienced in the nose, in full alignment with the ecological framework first proposed by Gibson in 1966 (Gibson 1966)). Specifically, for taste, we stated, “The following questions are related to your sense of taste. For example, sweetness, sourness, saltiness, bitterness experienced in the mouth.” For chemesthesis, we stated, “The following questions are related to other sensations in your mouth, like burning, cooling, or tingling. For example, chili peppers, mint gum or candy, or carbonation.” In both cases, we were orienting participants toward sensations that are experienced in the mouth. In contrast, for smell, we stated, “These questions relate to your sense of smell (for example, sniffing flowers or soap, or smelling garbage) but not the flavor of food in your mouth.” The within-subject nature of the present design precludes a need for more sophisticated scaling methods than a VAS (Kalva et al. 2014). That is, participants were not randomly assigned to the 2 diagnostic groups; however, the groups may be considered as if random when it comes to adjective interpretation/scale usage. This case, we argue, would fall within Bartoshuk’s guidelines for when valid across group comparisons can be made with a VAS (Bartoshuk et al. 2003). For a list of the questions analyzed in the present work, please see Supplementary Table.

Participants were also asked to report demographic information (i.e., year of birth, gender, and country of residence), as well as information related to their COVID-19 diagnosis and their respiratory illness-related symptoms, including smell and taste, in check-all-that-apply (CATA) format. We summarized the questions used in the present study in Supplementary Figure S1. Please refer to the full questionnaire, included in the Supplementary Material, for question order and the labels on the anchors of each question.

The questionnaire was implemented in 10 languages as of April 18, 2020 (the date on which the database was last queried for this report): English, French, German, Italian, Japanese, Kannada, Norwegian, Spanish, Swedish, and Turkish. Our translation protocol was modeled after the process developed by the Psychological Science Accelerator (Moshontz et al. 2018). Briefly, translations of the original English questionnaire involved 3 steps: 1) the original (English) questionnaire was translated to the target language by independent translators, resulting in Translation Version A; 2) Version A was translated back from the target language to English by a separate group of independent translators, resulting in Version B; 3) Versions A and B were discussed among all translators, with the goal of resolving potential discrepancies between the 2 versions, resulting in the final Version C. All questionnaires in all languages were then implemented in Compusense Cloud, Academic Consortium, a secure cloud-based data collection platform with multilingual support. Please refer to the Supplementary Material for the full survey and to the questions from the survey analyzed in the present work (Supplementary Figure S1).

### Study design

This study compares self-reported quantitative changes (during vs. before the illness) in smell, taste, chemesthesis, and nasal obstruction, as well as qualitative changes in smell and taste between 2 groups of respondents: those who reported a COVID-19 diagnosis as a result of an objective test, such as a swab test (“Lab Test”), or those who reported a diagnosis from clinical observations by a medical professional (“Clinical Assessment”). Given the lack of effect size estimates in the literature, we employed a Sequential Bayes

Factor Design (SBFD) that allows optional stopping with unlimited multiple testing (Schönbrodt et al. 2017). Specifically, we used an SBFD with a minimal number of participants and a temporal stopping rule to increase the probability of obtaining the desired level of evidence and to reduce the probability of obtaining misleading evidence. The desired grade of relative evidence for the alternative versus the null ( $BF_{10}$ ) hypothesis is set at  $BF_{10} > 10$  (strong evidence) for  $H_1$  and  $BF_{01} > 6$  (moderate evidence) for  $H_0$ . We derived the minimal  $N_{\min} = 480$  per group to start SBFD through a Bayes Factor Design Analysis (BFDA) for fixed- $n$  designs (Schönbrodt and Wagenmakers 2018) for a 2-independent-sample, 2-sided testing, and a conservative Cohen's  $D = 0.2$  with 80% power of reaching a  $BF_{10} > 10$  and a  $BF_{01} > 6$  with a default prior. Our stopping rule follows a temporal criterion (data collection until April 18, 2020, 8:34 AM EDT) and  $N_{\min}$ . BF computation continues with every 20 participants added in the slowest accumulating group at a time until the thresholds of  $H_1$  or  $H_0$  are reached.

### Study setting

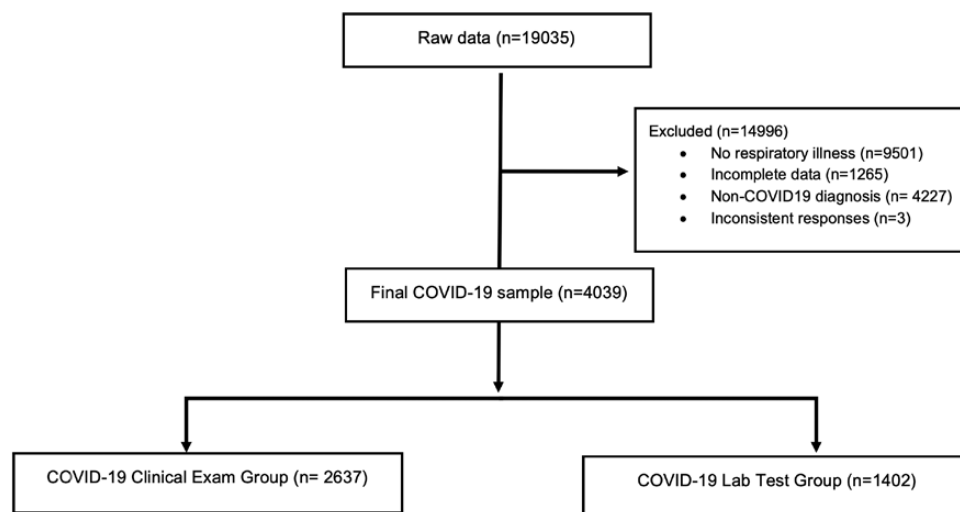
Participation in this online study was voluntary and participants received no remuneration. Inclusion criteria were: consent to participate, age 19 years and older (based on birth year), and any form or suspicion of respiratory illness in the past 2 weeks. Participants were asked about their year of birth and the onset of their illness during the survey to confirm the inclusion criteria, and the survey terminated for noneligible participants via branching logic. The nature of the questionnaire necessitated at least some secondary education in terms of language and distribution method (web survey), as well as internet access. The protocol complies with the revised Declaration of Helsinki and was approved as an exempt study by the Office of Research Protections at The Pennsylvania State University (Penn State) in the United States (STUDY00014904). The questionnaire was distributed globally in the different languages through traditional (i.e., print, television, and radio) and social media (e.g., Twitter and Facebook), the website of the Global Consortium for Chemosensory Research (GCCR; <https://gcchemosensr.org>), flyers, professional networks, and word of mouth. All data were collected from a nonrepresentative, convenience sample via Compuserve Cloud, which is compatible with use on a smartphone, tablet,

laptop, or desktop computer. Data collection was compliant with privacy laws in the United States and the European Union (including California and General Data Protection regulation [GDPR] rules).

### Participants

At the close of data collection on April 18, 2020, 4039 participants with a diagnosis of COVID-19 completed the ratings for smell, taste, chemesthesis ability, and nasal obstruction before and during their recent illness and were included in the present study. Participants who did not complete all ratings as mentioned above and/or gave inconsistent responses in 3 questions that addressed changes in smell perception (specifically, selecting changes in smell in “Have you had any of the following symptoms with your recent respiratory illness or diagnosis?” reporting a difference of at least 5 points in “Rate your ability to smell before your recent respiratory illness or diagnosis” and/or selecting at least one answer for the question “Have you experienced any of the following changes in smell with your recent respiratory illness diagnosis?”) or reported an age above 100 ( $N = 1$ ) were excluded from the sample. Of those included in the final sample, 2913 were women, 1118 were men, 3 were others, and 5 preferred not to say. Overall, the age of the participants ranged from 19 to 79 years old (mean  $\pm$  standard deviation [SD]: 41.38  $\pm$  12.20 years old).

Here, we will compare respondents from 2 diagnostic groups: 1) participants who reported that their COVID-19 diagnosis was confirmed via objective Lab Test ( $N = 1402$ : 1064 F, 335 M; age mean  $\pm$  SD: 40.73  $\pm$  12.29 years old) compared with 2) participants who reported that their COVID-19 diagnosis was obtained via clinical observation by a medical professional ( $N = 2637$ : 1849 F, 783 M; age mean  $\pm$  SD: 41.72  $\pm$  12.14 years old). Based on self-report, respondents indicated that they resided in the following countries: Algeria, Argentina, Australia, Austria, Belgium, Brazil, Canada, Colombia, Costa Rica, Czech Republic, Denmark, Ecuador, Egypt, France, Germany, Greece, Iran, Ireland, Italy, Luxembourg, Morocco, Mexico, Netherlands, New Zealand, Norway, Paraguay, Portugal, Romania, Russia, Singapore, Slovenia, South Africa, Spain, Sweden, Switzerland, Thailand, Tunisia, Turkey, United Kingdom, United Arab Emirates, and United States. Figure 1 illustrates the derivation of the sample presented here.



**Figure 1.** Flow diagram showing the selection of individual observations included in the reported analysis, as well as the observations that were excluded.



## Statistical analysis

All analyses were performed in R (Team R Core Development 2013) via RStudio. The scripts along with information on the computational environment and dependencies will be found, upon acceptance of the manuscript, at <https://osf.io/a3vkw/>. Information on the computational environment and dependencies used is also shared for future reproducibility. The code is also available on GitHub at <https://github.com/GCCR/GCCR001> and includes a Jupyter notebook replicating the core analyses in Python.

We hypothesized that there would be no difference between groups. Therefore, we elected for a Bayesian approach, which allows us to estimate the strength of evidence supporting the null hypothesis over a frequentist approach that would only allow us to present evidence against the null hypothesis. To test our hypotheses ( $H_0$ : no difference between groups;  $H_1$ : difference between groups) in this between-participant SBF, we conducted a Bayesian linear regression with the *lmbf* function from the *BayesFactor* package (Morey and Rouder 2018) to detect changes (during minus before COVID-19) in smell, taste and chemesthetic abilities, as well as nasal obstruction. Data report the Bayes factor and no proportional error estimate on the Bayes factor because they were all lower than 2.07e-05. We used the default Cauchy prior on the effect sizes under the  $H_1$  as the scale parameter spread, which was set at its default value of  $r = \text{sqrt}(2)/2$ . We performed robustness (sensitivity) checks by adjusting the Cauchy distribution to  $r = 0.5$  and  $r = 1$  to assess how the choice of prior affects the conclusions drawn from the analysis. We first assessed whether the model provides evidence in favor of  $H_1$  or  $H_0$ . To interpret the strength and the direction of those effects, we sampled from the models' posterior distributions (iterations = 1e4). Please refer to the preregistration and the analysis script (see above) for further details. As reported in Table 1, the interpretation of the Bayes factors  $BF_{10}$  follows the classification scheme proposed by Lee and Wagenmakers (2013) and adjusted from (Jeffreys 1961).

## Exploratory nonpreregistered analyses

To quantify the association between the reports of parosmia and phantosmia, smell, taste, chemesthesis, and a change in perceived nasal obstruction, we computed a correlation matrix that is visualized with *ggstatsplot* (Patil and Powell 2018). To assess whether the proportion of parosmia and phantosmia reports differs between groups, we used a 2-sample test for equality of proportions with a continuity correction. To characterize the relationship between perceived nasal blockage and chemosensory change, we used a principal component analysis (PCA) using *prcomp* from the R default *stats* package and we plotted the results with functions from the *FactoMineR* package (Lê et al. 2008). Additionally, to test whether different chemosensory function profiles exist in our sample, we performed a cluster analysis. The best clustering

scheme was with 3 clusters as determined with *NbCluster* (Charrad et al. 2014), which tests 30 methods that vary the combinations of number of clusters and distance measures for the *k*-means clustering. Cluster stability was estimated through a bootstrapping approach (100 iterations) with the *bootcluster* package (Yu 2017).

## Results

### Degree of smell loss during COVID-19

Overall, participants reported a large reduction in the sense of smell ( $-79.7 \pm 28.7$  points on the 100-point scale; mean  $\pm$  SD; Table 2). Such decrease in the ability to smell was confirmed with extreme evidence (smell change against zero:  $BF_{10} = 4366.29 \pm 0\%$ ) and that was similar for both groups ( $BF_{10} = 2.17 \pm 0\%$  inconclusive evidence for a group difference, i.e.  $H_1$ ; Figure 2A). The Clinical Assessment group exhibited a larger variance in the ability to smell during the illness as compared to the Lab Test group (Levene test,  $F_{(1,4037)} = 6.81$ ,  $P = 0.009$ ; see also the box plots in Figure 2A).

### Smell qualitative changes

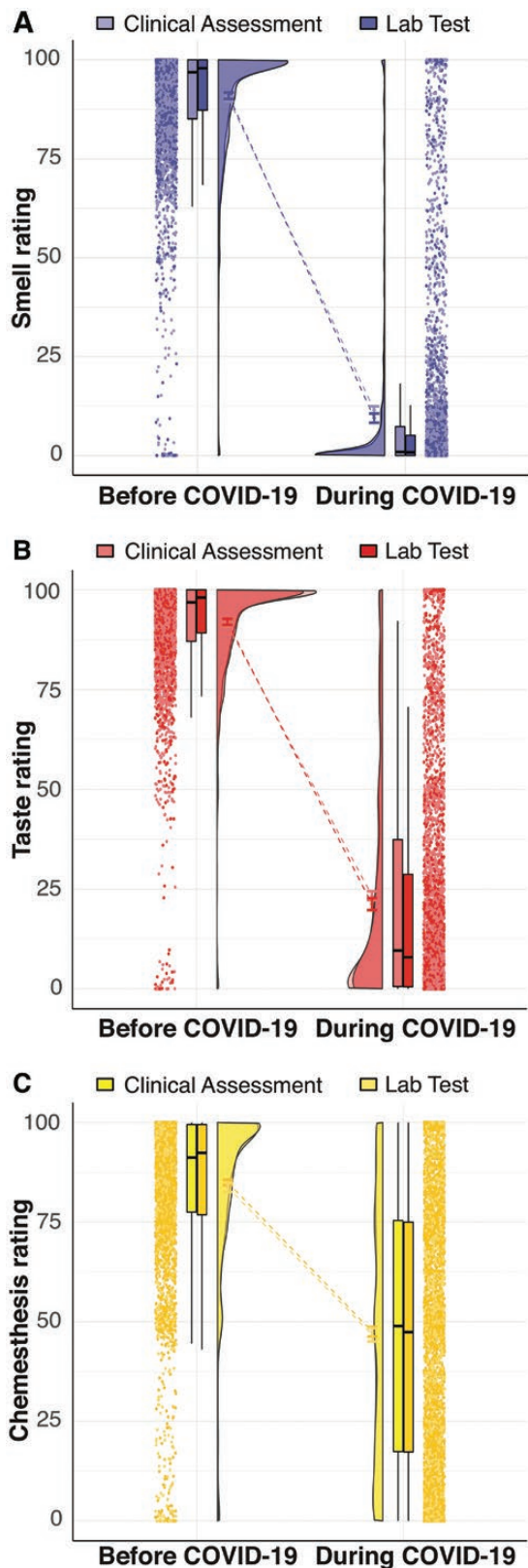
Parosmia did not differ significantly between groups ( $X^2_{(1)} = 0.54$ ,  $P = 0.463$  [-0.01–0.03]) and was reported by 7.77% (205 out of 2637) of participants in the Clinical Assessment and by 7.13% (100 out of 1402) in the Lab Test group. Reports of phantosmia, however, did significantly differ between groups ( $X^2_{(1)} = 13.8$ ,  $P < 0.001$  [0.02–0.06]): it was reported by 9.44% (249 out of 2637) of participants in the Clinical Assessment and by 6.28% (88 out of 1402) in the Lab Test group. Reports of either parosmia or phantosmia negatively correlated with a report of a reduced ability to smell (on VAS) or a total smell loss (reported via CATA). Parosmia

**Table 1.** Interpretation of the Bayes factors  $BF_{10}$  follows the classification scheme proposed by Lee and Wagenmakers (2013) and adjusted from Jeffreys (1961)

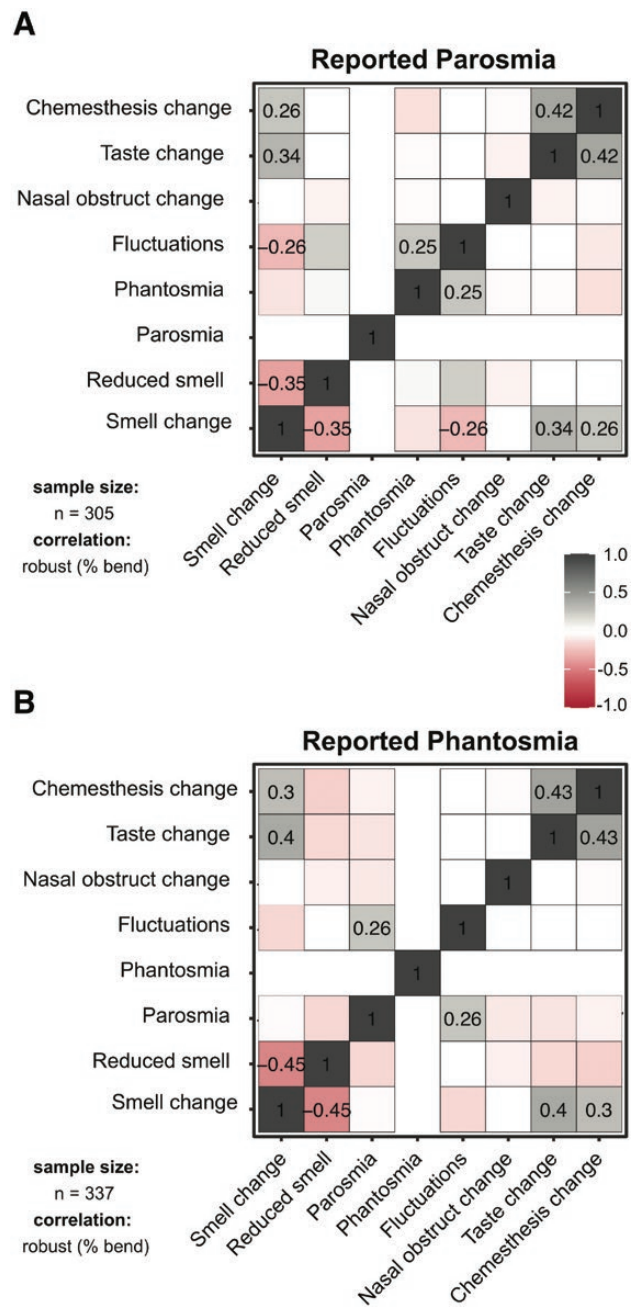
Bayes factor	Evidence category
>100	Extreme evidence for $H_1$
30–100	Very strong evidence for $H_1$
10–30	Strong evidence for $H_1$
3–10	Moderate evidence for $H_1$
1–3	Anecdotal evidence for $H_1$
1	No evidence
1/3–1	Anecdotal evidence for $H_0$
1/10–1/3	Moderate evidence for $H_0$
1/30–1/10	Strong evidence for $H_0$
1/100–1/30	Very strong evidence for $H_0$
<1/100	Extreme evidence for $H_0$

**Table 2.** Mean and SD for the ratings of smell, taste, chemesthesis, and nasal obstruction before and during COVID-19 in the Clinical Assessment and LabTest groups

Variable	Clinical Assessment				Lab Test			
	Before COVID-19		During COVID-19		Before COVID-19		During COVID-19	
	Mean	SD	Mean	SD	Mean	SD	Mean	SD
Smell	90.18	14.92	11.49	24.24	90.96	15.71	9.46	22.33
Taste	91.33	13.25	23.34	29.36	92.00	14.34	21.23	28.71
Chemesthesis	84.96	18.74	47.48	32.17	83.72	22.1	46.68	32.2
Nasal obstruction	9.83	18.41	31.67	32.11	9.35	17.89	32.67	31.62



**Figure 2.** Raincloud plots representing ratings for smell (A), taste (B), and chemesthesis (C) before (left) and during (right) COVID-19. Within each subplot (from left to right), ratings from single participants are displayed as dots. Boxplots show the first to third quartiles, the horizontal line denotes the median, and whiskers denote 1.5 times the interquartile range. The density distribution of the data shows the proportions of given ratings. COVID-19 diagnosis is coded such that Clinical Assessment is a lighter shade and Lab Test is a darker shade.



**Figure 3.** Correlation matrices for individuals who reported parosmia (left,  $N = 296$ ) and phantosmia (right,  $N = 324$ ) across groups. The numbers refer to significant correlations at  $P < 0.001$  (adjustment: Holm).

and phantosmia positively correlated with changes in smell, taste, and chemesthesis ratings but not with changes in perceived nasal obstruction (Figure 3).

#### Degree of taste loss in COVID-19

Similar to what was seen with smell loss, we observed an overall reduced ability to taste ( $-69.0 \pm 32.6$  points; mean  $\pm$  SD, Table 2) that was confirmed with extreme evidence (taste change against zero:  $BF_{10} = 3424.52 \pm 0\%$ ) and that was similar for both groups ( $BF_{10} = 0.72 \pm 0\%$  suggesting inconclusive evidence for a group difference). The Clinical Assessment group exhibited a larger variance in the ability to taste during COVID-19 as compared to the Lab Test

group (Levene test:  $F_{(1,4037)} = 3.91$ ,  $P = 0.048$ ; see also the box plots in Figure 2B).

### Taste quality-specific changes

Participants were given the option to report changes in specific taste qualities (i.e., salty, sour, sweet, bitter, or umami/savory) as a CATA question. Of all participants, 40% in both groups did not respond, 11% in both groups reported impairment of a single taste quality, and 48% reported impairment of 2 or more taste qualities (48% in the Clinical Assessment group and 49% in the Lab Test group). Between groups, only umami (savory) taste change was less frequently reported (25%) in the Clinical Assessment group than in the Lab Test group (29%;  $\chi^2(1) = 7.22$ ,  $P < 0.007$  [ $-0.07$  to  $-0.01$ ]). No significant differences in the frequency of reporting changes for sweet, salty, bitter, or sour taste was evident between groups (Table 3).

### Degree of chemesthesis loss in COVID-19

Similar to taste and smell, we observed an overall loss of chemesthetic ability ( $-37.3 \pm 36.2$ ; mean  $\pm$  SD, Table 2) that was confirmed with extreme evidence (chemesthetic change against zero:  $BF_{10} = 1459.98 \pm 0\%$ ) and that was similar for both groups ( $BF_{01} = 35.42 \pm 0\%$  suggesting strong evidence against a group difference; Figure 2C). The

**Table 3.** Frequency of responses, by group, for changes of specific taste qualities during COVID-19

Taste change	Clinical Assessment (N = 2637)	Lab Test (N = 1402)
Sweet	1160	628
Salt	1211	629
Bitter	1036	550
Sour	980	531
Umami	668	411

distribution of chemesthetic ability showed a large 95% CI [ $-2.82$  to  $1.88$ ].

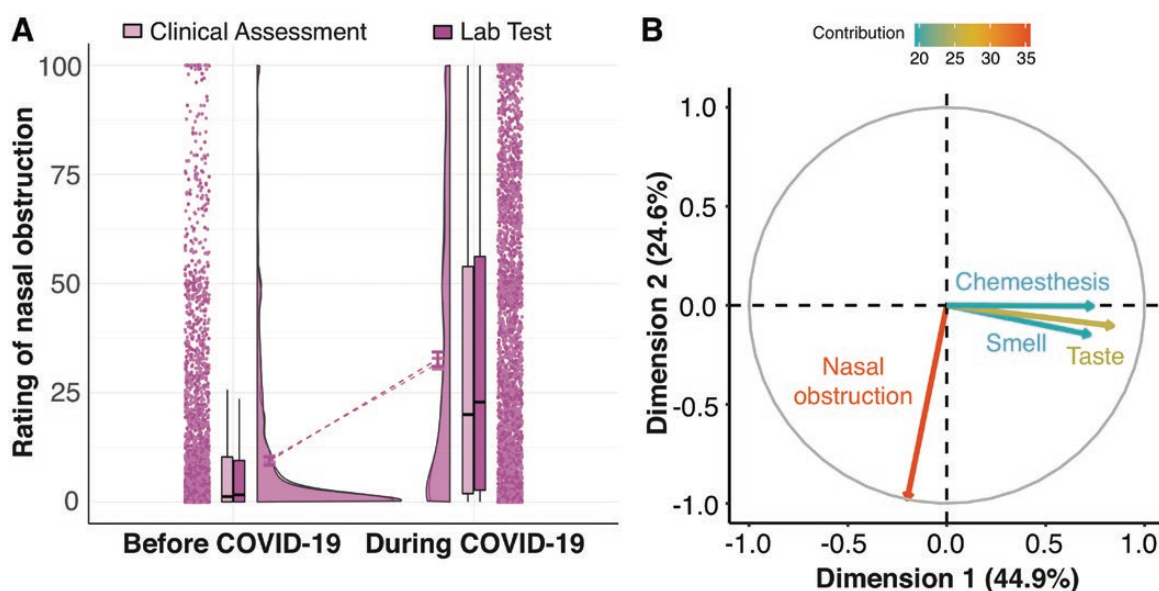
### Perceived nasal obstruction in COVID-19

We observed a disease-related change in perceived nasal obstruction (22.4 plus/minus 32.4 points; mean plus/minus SD; Table 2) that was supported by extreme evidence (nasal obstruction change against zero:  $BF_{10} = 783.25 \pm 0\%$ ). No difference in the change in perceived nasal obstruction was found between groups as corroborated by moderate evidence against a group difference ( $BF_{01} = 14.52 \pm 0\%$ ; Figure 4A).

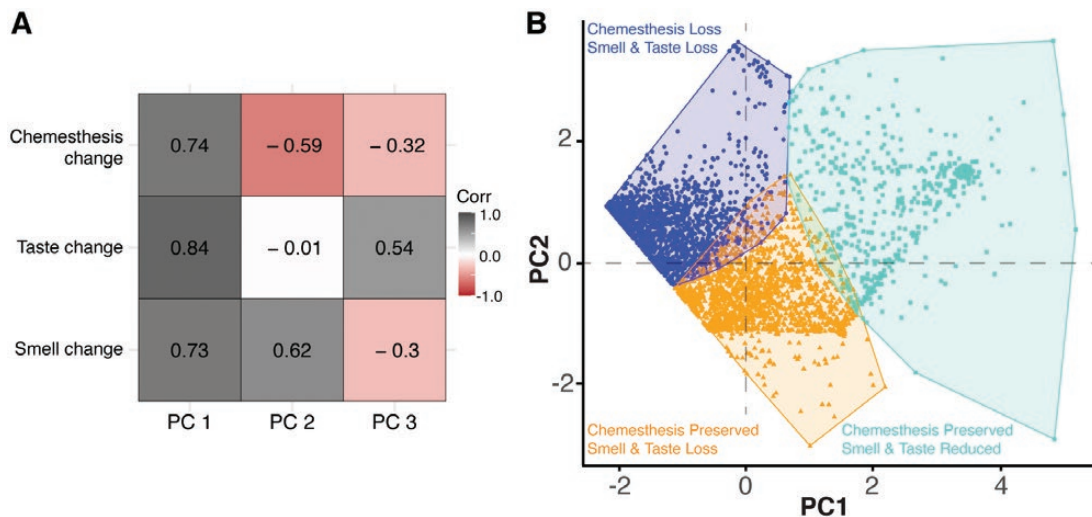
To further characterize potential relationships between changes in perceived nasal obstruction and reports of changes in the 3 chemosensory modalities, we computed a PCA (Figure 4B). Changes in smell, taste, and chemesthesis ratings (during minus before) correlated strongly with Component 1 (smell:  $r = 0.72$ ; taste:  $r = 0.84$ ; chemesthesis:  $r = 0.74$ ), which explained 45.2% of the total multidimensional variance (inertia). By contrast, change in perceived nasal obstruction was strongly anticorrelated ( $r = -0.97$ ) with the orthogonal Component 2, which explains 24.6% of the total inertia. These results indicate statistical independence of changes in chemosensory ability and perceived nasal obstruction. That is, changes in chemosensory ability and perceived nasal obstruction are statistically independent, so we conclude that changes in olfactory function in COVID-19 positive individuals cannot be attributed to nasal obstruction.

### Chemosensory clustering

We used *k*-means algorithm to cluster respondents based on the similarities and differences in smell, taste, and chemesthesis change (Figure 5). Despite the changes being continuous in the three dimensions, a data-driven, 3-cluster solution (bootstrapped stability = 0.94) identified 3 groups. Based on the centroid positions, such groups can be described by degree of smell and taste loss and



**Figure 4.** Nasal obstruction. (A) The raincloud plot represents ratings for perceived nasal obstruction. From left to right, ratings from single participants are displayed as dots. Boxplots show the first to third quartiles, the horizontal line denotes the median, and whiskers denote 1.5 times the interquartile range. The density distribution of the data shows the proportions of given ratings. COVID-19 diagnosis is color-coded, with Clinical Assessment in lighter shade and Lab Test in darker shade. (B) Principal component analysis. Correlation circle of the perceptual changes with the first (abscissa) and second (ordinate) principal components.



**Figure 5.** (A) Correlations between the 3 principal components with respect to changes in 3 chemosensory modalities (i.e., taste, smell, and chemesthesis). Shades of gray indicate positive correlation, whereas shades of red indicate negative correlations. White denotes no correlation. (B) Clusters of participants identified by *k*-means clustering. The scatterplot shows each participant's loading on dimension 1 (degree of chemesthesis loss, abscissa) and dimension 2 (degree of smell and taste loss, ordinate). Loadings for participants in cluster 1 (blue,  $N = 1767$ ) are characterized by significant smell and taste loss and preserved chemesthesis. Participants in cluster 2 (orange,  $N = 1724$ ) are characterized by ratings reflecting moderate smell/taste loss and preserved chemesthesis. Loadings for participants in cluster 3 (green,  $N = 548$ ) are characterized by significant smell, taste, and chemesthesis loss.

degree of chemesthesis loss. Cluster 1 ( $N = 1767$ , blue) groups participants whose ratings are centered around substantial smell, taste, and chemesthesis loss (centroids: smell:  $-88.89$ , taste:  $-86.74$ , chemesthesis:  $-72.39$ ). Cluster 2 ( $N = 1724$ , orange) groups participants whose ratings are centered around substantial smell and taste loss and rather unaffected chemesthesis (centroids: smell:  $-87.81$ , taste:  $-65.97$ , and chemesthesis:  $-11.07$ ). Cluster 3 ( $N = 548$ , green) groups participants whose ratings are centered around moderate smell and taste reduction and rather unaffected chemesthesis (centroids: smell:  $-24.33$ , taste:  $-20.97$ , and chemesthesis:  $-6.87$ ).

## Discussion

Our study confirms and substantially extends previous reports showing that smell loss and taste loss are associated with COVID-19. Similar to other recent studies (Bagheri et al. 2020; Chen et al. 2020; Gane et al. 2020; Giacomelli et al. 2020; Haldrup et al. 2020; Hopkins et al. 2020; Lechien, Cabaraux, et al. 2020; Lechien, Chiesa-Estomba, et al. 2020; Mao et al. 2020; Menni et al. 2020; Moein et al. 2020; Yan, Faraji, Prajapati, Boone et al. 2020; Yan, Faraji, Prajapati, Ostrander 2020), we find that the majority of our participants with COVID-19 reports a severe reduction in the ability to smell as compared to before the onset of that disease. Notably, this smell loss was not associated with self-reported nasal obstruction, consistent with anecdotal reports. Furthermore, we find that qualitative changes in smell (smell distortions or phantoms) were relatively rare. We found that taste and, to a lesser degree, chemesthesis were also significantly impaired for individuals with COVID-19. Together, these results suggest that COVID-19 broadly impacts chemosensory function across multiple sensory modalities and that disruption of these may be a possible indicator of COVID-19.

This project is distinct from prior studies on the links between chemosensory dysfunction and COVID-19 in that it leverages a massive crowd-sourced, multinational approach to attack this urgent issue and does so within a collaborative open science framework. This initial report is based on data in 10 languages from

41 countries; since the first tranche of data on April 18, 2020, 18 additional languages have been added on a rolling basis. The multinational, collaborative nature of the GCCR approach also sets it apart from other recently developed tools. Our hope is that an inclusive globally deployed assessment, coupled with publicly accessible data shared under contemporary open science best practices, will serve as a foundation for future work. It is a limitation of this initial snapshot, however, that participants from different countries are not evenly represented. Cultural biases or country-specific manifestations of COVID-19 could potentially impact these results and will be explored by GCCR in future studies. Though our comprehensive self-report survey cannot replace in-person testing in a controlled clinical or laboratory setting, the gold standard for assessing alterations in chemosensory function, it efficiently and effectively addresses an emerging public health crisis with global scope of coverage. Thus, the model shown in this study of remote smell and taste assessment utilizing the internet may represent one way of reducing delays in assessment until aggressive physical distancing ends (Patel 2020; Workman et al. 2020).

The mean change in ability to smell was substantial. Prior to the onset of COVID-19, the mean rating for the ability to smell was over 90 on a 100-point VAS, yet, during the disease, the mean rating dropped below 20. These data do not allow us to differentiate between individuals with partial (hyposmia) versus total loss (anosmia), and participants themselves may be unable to precisely characterize their degree of loss in the absence of objective olfactory testing (Welge-Lüssen et al. 2005; Hoffman et al. 2016; Loetsch and Hummel 2019). Still, we can conservatively conclude that a major drop in the ability to smell is a hallmark of COVID-19. If the prevalence of COVID-19-associated smell loss is greater than that reported for the common cold or influenza (Beltrán-Corbellini et al. 2020), a different mechanism for disrupting olfactory function may be at play, or this difference could also reflect increased tropism of SARS-CoV-2 for olfactory tissues (Baig et al. 2020).

Critically, the self-reported smell loss we observed is statistically independent of self-reported nasal obstruction. In common URIs,

nasal obstruction can explain temporary smell impairments, a phenomenon many have experienced in daily life. Here, estimates of nasal obstruction were based solely on self-report (we asked participants to rate the amount of “nasal blockage”); our data do not include objective, clinically validated measures of nasal breathing or obstruction. While nasal congestion does occur with COVID-19, it appears to be relatively rare in our sample. Still, the fact that many of our participants report substantial loss of olfactory function in the absence of concomitant nasal blockage seems remarkable.

In other instances of postviral smell loss, about half of patients also experience a qualitative change in smell (Frasnelli et al. 2004; Reden et al. 2007; Rombaux et al. 2009). By contrast, less than 10% of participants in this study reported parosmia or phantosmia symptoms. The rarity of qualitative changes in smell may be a hallmark of COVID-19 associated smell impairments. Alternatively, the present study may not have fully captured qualitative changes in smell, as they tend to emerge later in the course of other disorders (Bonfils et al. 2005) and the present assessment was limited to within at most 2 weeks of suspected illness or diagnosis. Further studies are needed to more comprehensively address this issue.

Although taste loss has also been associated with COVID-19 in patient anecdotes and a few studies, in most cases it has not been clearly differentiated from changes in smell. Here, we found that ratings of taste function were, like those for smell, substantially decreased in individuals with COVID-19. Participant ratings for taste function dropped from a mean of ~91 before COVID-19 onset to less than ~24 during the disease. It is well established that people often confuse changes in retronasal olfaction—an important component of flavor perception during eating and drinking—with a true taste loss. Although we cannot completely rule this out given the study design, ~60% of those reporting a taste loss also reported a decrease in their perception of at least one specific taste quality, with salty taste being the most common selection. The question on taste qualities is a CATA question, which means that the subjects can choose any taste qualities that they believe were clearly affected. Indeed, many of the participants chose multiple taste qualities. These data support an interpretation that at least some participants were properly discerning taste from flavor. The observation that some participants reported loss of only a subset of taste qualities may reflect their difficulty in correctly identifying and naming individual taste qualities (Pilkova et al. 1991; Welge-Luessen et al. 2011) rather than quality-selective hypogeusia/ageusia (e.g., Henkin et al. 1970; Lugaz et al. 2002; Gudziol and Hummel 2007; Huque et al. 2009). However, these possibilities cannot be clarified with the present database.

Compared to smell, the literature has described fewer examples of postviral taste loss (Adour 1994; Rubin and Daube 1999). As the number of people responding to this questionnaire continues to grow on a rolling basis, the differences among different types of respiratory illnesses and their relationship to the degree of taste loss will be a major focus of forthcoming analyses.

Perhaps our most surprising finding was a notable loss of oral chemesthesis ability with COVID-19. Though the decrease is not as large as seen for smell and taste—an ~46% rating reduction for chemesthesis as compared to ~89% and ~76% percentage drop in smell and taste, respectively—it is significant. Interestingly, impairment of chemesthesis was typically accompanied by either taste and smell loss, whereas taste and smell loss could appear with normal chemesthesis. Whereas nasal chemesthesis experienced with the inhalation of noxious chemicals like ammonia or ethanol is sometimes confused with smell, oral chemesthesis responses to compounds like capsaicin from chili peppers or menthol from mint rarely is (Green

1996). Though predominantly thought of as the chemical activation of trigeminal afferents carrying temperature, pain, or vibration information from the oral, nasal, and eye mucosa, other somatosensory nerves, including in the mouth, can also be affected (Green 1996; McDonald et al. 2016). Chemesthesis (and taste) has been reported to accompany postviral hyposmia resulting from a URI, at least in some cases (Ren et al. 2012; Fark and Hummel 2013; de Haro-Licer et al. 2013; Pellegrino et al. 2017). Together with our findings for smell and taste, these data suggest that SARS-CoV-2 impacts all 3 major chemosensory modalities. The mechanisms are not clear and may be distinct for each chemosensory system. For example, transcriptomic studies of the olfactory mucosa of mouse and human suggests that sustentacular, Bowman’s gland, microvillous cells, and stem cell populations, not olfactory sensory neurons themselves, contain ACE2, a receptor required for SARS-CoV-2 viral entry into cells (Brann et al. 2020; Fodoulou et al. 2020). The pattern of ACE2 expression indicates that SARS-CoV-2 may infect tongue keratinocytes (Venkatakrishnan et al. 2020), but it is not known if taste receptor cells or cranial nerves carrying taste or chemesthetic information can be infected by SARS-CoV-2. This virus could alternatively infect surrounding epithelia or blood vessels (Sungnak et al. 2020; Varga et al. 2020) or, perhaps, even target cells of the central nervous system (Baig et al. 2020).

Based on the stark changes in ratings reported here, one may speculate that both smell and taste loss in COVID-19 are all-or-none phenomena. Although, we cannot rule out that this is an artifact of scale usage, this explanation seems unlikely, as the distribution of the chemesthetic ability ratings is roughly rectangular. This suggests that the all-or-none effect observed for smell cannot be simply attributed to participants using the scale in a discrete rather than continuous fashion. The self-reporting of olfactory function has been used in numerous studies; however, it is not unanimously accepted as it may suffer from low validity (Landis et al. 2003) due to underreporting and overreporting biases (Dalton and Hummel 2000; Oleszkiewicz et al. 2020) and possible arbitrary usage. These studies all indicate that self-report ratings are far from being completely inaccurate, especially in participants with severe hyposmia or anosmia, with reported accuracy rates of 70–80% (Rawal et al. 2015; Hoffman et al. 2016; Lötsch et al. 2019).

Here, we account for well-known individual differences in baseline chemosensory abilities, as well as the use of rating scales, by using a within-subject design where participants rate their abilities for different time points (before and during COVID-19). We perform an analysis of differences between 2 assessments (e.g., during minus before COVID-19) rather than on absolute ratings. To better address the question of validity of change in ability ratings, future studies should compare these self-reported and recalled ratings to validated clinical tests before and during the individual’s respiratory illness. However, in times of pandemic, the advantages of a remote assessment method may outweigh the potential decrease in validity compared to face-to-face clinical measures of taste and smell. Still, we acknowledge that a convenience sample recruited online may not be representative of the general population; thus, our study and others that use this type of recruitment approach (e.g., Iravani et al. 2020; Menni et al. 2020) should not be used to estimate prevalence of chemosensory loss in individuals with COVID-19.

Lastly, we found that mean impairments of smell, taste, and chemesthesis did not differ between study participants who reported a COVID-19 diagnosis based on a Lab Test and those who reported diagnosis based on a Clinical Assessment. However, the Clinical Assessment group exhibited a larger variance in chemosensory loss than the Lab Test group. This could reflect more variability in the accuracy of the diagnosis as the Clinical Assessment group may include

individuals who were misdiagnosed and actually have another viral illness and/or a milder form of the disease. Determining whether the degree of change in chemosensory ability differs between COVID-19-positive individuals and those who are COVID-19-negative but have another respiratory disease will require specific comparisons between those 2 groups in a future study.

## Conclusions

The GCCR consortium shows how health professionals, clinicians, patient advocates, and scientists can work together to undertake large-scale ground-breaking research of acute public health significance. The present research sets an example of how an emergent response to a global pandemic can be tackled with a crowd-sourced initiative that combines rigorous scientific standards with open-science practices. The established network, research infrastructure, protocol, and findings have the potential to influence current theories on the effects and mechanisms of COVID-19 on the chemical senses and to fuel future research in other areas.

## Supplementary material

Supplementary material can be found at *Chemical Senses* online.

## Acknowledgments

The authors wish to thank Paule V. Joseph for her continuous support and for thoughtful discussions, as well as Jacqueline Dysart and Karen Phipps at Compusense and Olivia Christman at Penn State for all their help in rapidly deploying the GCCR survey in multiple languages. We are grateful to Marek Vondrak for their help with programming the automatization of the authorship list, Jae-Hee Hong for their editing contribution, and Tristram Wyatt for his role of facilitator of communication among the authors. Additionally, we would like to thank all our translators: Aditi Prasad, Alexandros Delides, Ali Khorram-Toosi, Aline Pichon, Amin Homayouni, Amol P. Bhondekar, Angela Bassoli, Anshika Singh, Antri Knaapila, Arijit Majumdar, Caterina Dinnella, Debarka Sengupta, Diana Wieck-Fjaeldstad, Dripta Roy, E. Bignon, Eman Hussien Ali Moussa Aboumoussa, Erminio Monteleone, Evangelia Tsakiropoulou, Francesca Boscolonata, Garnt Dijksterhuis, Gaurav Ahuja, Gauri Gharpure, Geetha G. T., Giorgia Sollai, Hhardik Shah, Hinal Kharva, Hyoshin Kim, Ingrid Ekström, Ivan Mendez, Jakob Henriksen, Janina Seubert, Jens Sundbøll, Jian Zou, Jitendra Gosai, Kazushige Touhara, Kruttika Phalnikar, Lester Clowney, Lijo Kurian, Marcelo Antonio, Marina Litvak, Mohammad Yaqoob, Musa Ayman Nammari, N. Ravel, Nafiseh Alizadeh, Nasera Rizwana, Neva Bojovic, Nitindra Nath Bandyopadhyay, Orietta Calcinoni, Pavlos Maragoudakis, Pia Soe, Pooja Sarin, Poonam Adhikari, Prasad Kshirsagar, Pratheek H. P., Rahul Kottath, Rashid Al Abri, Robert Greene, Rumi Iwasaki, Sanal Aman, Sangyeon Lim, Santosh Rajus, Sara Spinelli, Saurabh Mahajan, Seo Jin Cheong, Shima Taallohi, Simon Singh, Soumya Palit, Sreejith Shankar, Srimanta Pakhira, Sudeshna Bagchi, Sudhir Verma, Takaki Miwa, Takushige Clowney, Tatiana Laktionova, Tatjana Abaffy, Vinaya Sahasrabuddhe, Vinod K. Lokku, Xiaojing Cong, Yeonwoo Park, Yiqun Yu, Young Eun, Yuko Nakamura, and Zaid Kamal Madni.

## Funding

This work was supported financially with discretionary funds from the Pennsylvania State University (Penn State), including a gift from James and Helen Zallie given in support of Sensory Science at Penn State.

## Conflict of interest

C.E.K. is the founder of AbScent, a charity registered in England and Wales 1183468. R.C.G. receives equity compensation from Climax Foods. C.L. has received speaking, travel, and consulting fees from non-profit organizations

representing the fragrance industry and revenues from corporate clients in the olfaction-related industry. C.M.P. is a trustee of the Fifth Sense, a UK charity for smell and taste disorders. J.M.J. is a consultant for Medtronic, Inc., and Intersect ENT. T.H. reports grants from Aspuraclip, Berlin, Germany, grants from Sony, Stuttgart, Germany, grants from Smell and Taste Lab, Geneva, Switzerland, grants from Takasago, Paris, France, outside the submitted work. J.E.H. has received speaking, travel, and/or consulting fees from federal agencies, nonprofit organizations, commodity groups, and corporate clients in the food industry. Additionally, the Sensory Evaluation Center at Penn State performs routine product tests for industrial clients to provide experiential learning for students. None of these organizations were involved in the conception, design, or execution of this project or the decision to publish these findings. S.D.M. is Editor-in-Chief of *Chemical Senses*. He played no role in the editorial assessment of this paper. All other authors declare no conflict of interest. The findings and conclusions in this publication belong solely to the authors and do not represent the views of the US Government and do not represent any US Government determination, position, or policy.

## Members of GCCR Group

Olagunju Abdulrahman<sup>1</sup>, Pamela Dalton<sup>2</sup>, Carol H. Yan<sup>3</sup>, Vera V. Voznessenskaya<sup>4</sup>, Jingguo Chen<sup>5</sup>, Elizabeth A. Sell<sup>6</sup>, Julie Walsh-Messinger<sup>7</sup>, Nicholas S. Archer<sup>8</sup>, Sachiko Koyama<sup>9</sup>, Vincent Deary<sup>10</sup>, S. Craig Roberts<sup>11</sup>, Hüseyin Yanık<sup>12</sup>, Samet Albayrak<sup>13</sup>, Lenka Martinec Nováková<sup>14</sup>, Ilja Croijmans<sup>15</sup>, Patricia Portillo Mazal<sup>16</sup>, Shima T. Moein<sup>17</sup>, Eitan Margulis<sup>18</sup>, Coralie Mignot<sup>19</sup>, Sajidxa Mariño<sup>20</sup>, Dejan Georgiev<sup>21</sup>, Pavan K. Kaushik<sup>22</sup>, Bettina Malnic<sup>23</sup>, Hong Wang<sup>2</sup>, Shima Seyed-Allaei<sup>24</sup>, Nur Yoluk<sup>25</sup>, Sara Razzaghi-Asl<sup>13</sup>, Jeb M. Justice<sup>26,27</sup>, and Diego Restrepo<sup>28</sup>

<sup>1</sup>Department of Physiology, The Federal University of Technology, P.M.B. 704, Akure, Ondo State, Nigeria, <sup>2</sup>Monell Chemical Senses Center, 3500 Market St, Philadelphia, PA 19104, USA, <sup>3</sup>Department of Surgery, Division of Otolaryngology, Head and Neck Surgery, University of California San Diego Health, 9300 Campus Point Drive, MC 7895 La Jolla, CA 92037-7895, USA, <sup>4</sup>Severtsov Institute of Ecology and Evolution RAS, 33 Leninskii prosp, Moscow 119071, Russia, <sup>5</sup>Department of Otolaryngology—Head and Neck Surgery, Second Affiliated Hospital of Xi'an Jiaotong University, No. 157, Xi-wu Road, Xin-cheng District, Xi'an 710004, Shaanxi, China, <sup>6</sup>Perelman School of Medicine at the University of Pennsylvania, 3400 Civic Center Blvd, Philadelphia, PA 19104, USA, <sup>7</sup>Department of Psychology, University of Dayton, 300 College Park, Dayton, OH 45469-1430, USA, <sup>8</sup>Agriculture and Food, The Commonwealth Scientific and Industrial Research Organisation (CSIRO), 11 Julius Avenue, North Ryde, Sydney NSW 2113, Australia, <sup>9</sup>Department of Chemistry, Indiana University, 800 E Kirkwood Ave, Bloomington, IN 47405, USA, <sup>10</sup>Department of Psychology, Northumbria University Newcastle, Northumberland Road Newcastle upon Tyne NE1 8ST, UK, <sup>11</sup>Division of Psychology, University of Stirling, Queen's Ct, Stirling FK9 4LF, UK, <sup>12</sup>Department of Electrical and Electronics Engineering, Engineering Faculty, Mersin University, Çiftlikköy Campus, Yenişehir 33343, Mersin, Turkey, <sup>13</sup>Department of Cognitive Science, Informatics Institute, Middle East Technical University, Unversiteler Mahallesi, Dumlupinar Bulvari No:1, 06800 Cankaya, Ankara, Turkey, <sup>14</sup>Department of Anthropology, Faculty of Humanities, Charles University, Patkova 2137/5, 182 00 Praha 8 - Liben, Czech Republic, <sup>15</sup>Department of Psychology, Utrecht University, Heidelberglaan 1, 3584 CS Utrecht, The Netherlands, <sup>16</sup>Servicio de Otorrinolaringología, Hospital Italiano de Buenos Aires, Juan D. Peron 4230, C1181ACH Buenos Aires, Argentina, <sup>17</sup>School of Biological Sciences, Institute for Research in Fundamental Sciences (IPM), No. 1, Lavasani St, PO Box 19395-5746, Tehran, Iran, <sup>18</sup>Institute of Biochemistry, Food Science and Nutrition, The Hebrew University of Jerusalem, PO Box 12, Rehovot 761001, Israel, <sup>19</sup>Department of Otorhinolaryngology, Smell & Taste Clinic, TU Dresden, Fescherstrasse 74, 01307 Dresden, Germany, <sup>20</sup>Centro de Otorrinolaringología Respira Libre, Av Las Americas Cc Terras Plaza, Torre Medica Nivel 1 Local Centro De Otorrinolaringología Urb Terrazas Del Club Hipico Caracas Miranda Zona Postal 1080, Venezuela, <sup>21</sup>Department of Neurology, University Medical Centre Ljubljana, Zaloska cesta 2, 1000 Ljubljana, Slovenia, <sup>22</sup>National Center for Biological Sciences, Tata Institute of Fundamental Research, Bellary Road, Bangalore 560065, Karnataka, India, <sup>23</sup>Department of Biochemistry, University

of Sao Paulo, Av. Prof. Lineu Prestes, 748, CEP 05508-000 Sao Paulo, Brazil, <sup>24</sup>School of Cognitive Sciences, Institute for Research in Fundamental Sciences, Tehran, Iran, <sup>25</sup>Department of Anatomy, Faculty of Medicine, Mersin University, Çiftlikköy Campus, Yenişehir, 33343 Mersin, Turkey, <sup>26</sup>Department of Otolaryngology, College of Medicine, University of Florida, 1345 Center Drive, Gainesville, FL 32610, USA, <sup>27</sup>Center for Smell and Taste, University of Florida, 1149 Newell Drive, Rm LG-101D, Gainesville, FL 32610, USA, <sup>28</sup>Department of Cell and Developmental Biology, University of Colorado Anschutz Medical Campus, 12801 East 17th Avenue 12120B, Aurora, CO 80045, USA

## References

- Adour KK. 1994. Otological complications of herpes zoster. *Ann Neurol*. 35(1 Suppl):S62–S64. doi: [10.1002/ana.410350718](https://doi.org/10.1002/ana.410350718).
- Anonymous. 2020. COVID-19 OBSSR research tools. Available from: [https://www.nlm.nih.gov/dr2/COVID-19\\_BSSR\\_Research\\_Tools.pdf](https://www.nlm.nih.gov/dr2/COVID-19_BSSR_Research_Tools.pdf) (accessed on May 1, 2020).
- Bagheri SHR, Asghari AM, Farhadi M, Shamshiri AR, Kabir A, Kamrava SK, Jalessi M, Mohebbi A, Alizadeh R, Honarmand AA, et al. 2020. Coincidence of COVID-19 epidemic and olfactory dysfunction outbreak. *Med J Islam Repub Iran*. 34(1):446–452.
- Baig AM, Khaleeq A, Ali U, Syeda H. 2020. Evidence of the COVID-19 virus targeting the CNS: tissue distribution, host–virus interaction, and proposed neurotropic mechanisms. *ACS Chem Neurosci*. 11:995–998.
- Bartoshuk LM, Duffy VB, Fast K, Green BG, Prutkin J, Snyder DJ. 2003. Labeled scales (eg, category, Likert, VAS) and invalid across-group comparisons: what we have learned from genetic variation in taste. *Food Qual Prefer*. 14(2):125–138.
- Beltrán-Corbellini Á, Chico-García JL, Martínez-Poles J, Rodríguez-Jorge E, Natera-Villalba E, Gómez-Corral J, Gómez-López A, Monreal E, Parradía P, Cortés-Cuevas JL, et al. 2020. Acute-onset smell and taste disorders in the context of COVID-19: a pilot multicenter PCR-based case-control study. *Eur J Neurol*. In press. doi: [10.1111/ene.14273](https://doi.org/10.1111/ene.14273).
- Bonfils P, Avan P, Faulcon P, Malinvaud D. 2005. Distorted odorant perception: analysis of a series of 56 patients with parosmia. *Arch Otolaryngol Head Neck Surg*. 131:107–112. doi: [10.1001/archotol.131.2.107](https://doi.org/10.1001/archotol.131.2.107).
- Brann DH, Tsukahara T, Weinreb C, Lipovsek M, Van den Berge K, Gong B, Chance R, Macaulay IC, Chou H-j, Fletcher R, et al. 2020. Non-neuronal expression of SARS-CoV-2 entry genes in the olfactory system suggests mechanisms underlying COVID-19-associated anosmia. Preprint. *bioRxiv*. doi: [10.1101/2020.03.25.009084](https://doi.org/10.1101/2020.03.25.009084).
- Charrad M, Ghazzali N, Boiteau V, Niknafs A. 2014. NbClust: an rpackage for determining the relevant number of clusters in a data set. *J Stat Softw*. 61:1–36. Available from <http://www.jstatsoft.org/v61/i06/> (accessed on April 4, 2020).
- Chen R, Wang K, Yu J, Howard D, French L, Chen Z, Wen C, Xu Z. 2020. The spatial and cell-type distribution of SARS-CoV-2 receptor ACE2 in human and mouse brain. Preprint. *bioRxiv*. doi: [10.1101/2020.04.07.030650](https://doi.org/10.1101/2020.04.07.030650).
- Dalton P, Hummel T. 2000. Chemosensory function and response in idiopathic environmental intolerance. *Occup Med*. 15(3):539–556.
- Doty RL. 2001. Olfaction. *Annu Rev Psychol*. 52:423–452. doi: [10.1146/annurev.psych.52.1.423](https://doi.org/10.1146/annurev.psych.52.1.423).
- Duffy VB, Hayes JE. 2019. Biological basis and functional assessment of oral sensation. In: Meiselman HL, editor. *Handbook of eating and drinking: interdisciplinary perspectives*. Cham (Switzerland): Springer International Publishing, p. 1–25. doi: [10.1007/978-3-319-75388-1\\_22-1](https://doi.org/10.1007/978-3-319-75388-1_22-1).
- Fark T, Hummel T. 2013. Olfactory disorders: distribution according to age and gender in 3,400 patients. *Eur Arch Otorhinolaryngol*. 270(2):777–779.
- Fodoulian L, Tuberosa J, Rossier D, Boillat M, Kan C, Pauli V, Egervari K, Lohrinus JA, Landis BN, Carleton A, Rodriguez I. 2020. SARS-CoV-2 receptor and entry genes are expressed by sustentacular cells in the human olfactory neuroepithelium. Preprint. *bioRxiv*. doi: [10.1101/2020.03.31.013268](https://doi.org/10.1101/2020.03.31.013268).
- Frasnelli J, Landis BN, Heilmann S, Hauswald B, Hüttenbrink KB, Lacroix JS, Leopold DA, Hummel T. 2004. Clinical presentation of qualitative olfactory dysfunction. *Eur Arch Otorhinolaryngol*. 261(7):411–415.
- Gane SB, Kelly C, Hopkins C. 2020. Isolated sudden onset anosmia in COVID-19 infection. A novel syndrome? *Rhinology*. 58(3):299–301.
- Giacomelli A, Pezzati L, Conti F, Bernacchia D, Siano M, Oreni L, Rusconi S, Gervasoni C, Ridolfo AL, Rizzardini G, et al. 2020. Self-reported olfactory and taste disorders in patients with severe acute respiratory coronavirus 2 infection: a cross-sectional study. *Clin Infect Dis*. In press. doi: [10.1093/cid/ciaa330](https://doi.org/10.1093/cid/ciaa330).
- Gibson JJ. 1966. *The senses considered as perceptual systems*. Boston (MA): Houghton Mifflin.
- Green BG. 1996. Chemesthesis: pungency as a component of flavor. *Trends Food Sci Technol*. 7:415–420.
- Green BG. 2012. Chemesthesis and the chemical senses as components of a “chemofensor complex.” *Chem Senses*. 37:201–206. doi: [10.1093/chemse/bjr119](https://doi.org/10.1093/chemse/bjr119).
- Gudziol H, Hummel T. 2007. Normative values for the assessment of gustatory function using liquid tastants. *Acta Otolaryngol*. 127(6):658–661.
- Haldrup M, Johansen MI, Fjaeldstad AW. 2020. Lugte- og smagstap som primære symptom på COVID-19. *Ugeskr Læger*. 182:V04200205, 3–5.
- de Haro-Licer J, Roura-Moreno J, Vizitiu A, González-Fernández A, González-Ares JA. 2013. Long term serious olfactory loss in colds and/or flu. *Acta Otorrinolaryngol (English Edition)*. 64:331–338.
- Hayes JE. 2019. Influence of sensation and liking on eating and drinking. In: Meiselman HL, editors. *Handbook of eating and drinking: interdisciplinary perspectives*. Cham (Switzerland): Springer International Publishing, p. 1–25. doi: [10.1007/978-3-319-75388-1\\_21-1](https://doi.org/10.1007/978-3-319-75388-1_21-1).
- Henkin RI, Shallenberger RS. 1970. Aglycogeusia: the inability to recognize sweetness and its possible molecular basis. *Nature*. 227(5261):965–966.
- Hoffman HJ, Rawal S, Li C-M, Duffy VB. 2016. New chemosensory component in the us National Health and Nutrition Examination Survey (NHANES): first-year results for measured olfactory dysfunction. *Rev Endocr Metab Disord*. 17:221–240.
- Holbrook EH, Leopold DA, Schwob JE. 2005. Abnormalities of axon growth in human olfactory mucosa. *Laryngoscope*. 115:2144–2154.
- Hopkins C, Surda P, Kumar N. 2020. Presentation of new onset anosmia during the COVID-19 pandemic. *Rhinology*. 58(3):295–298.
- Hummel T, Landis BN, Hüttenbrink K-B. 2011. Smell and taste disorders. *GMS Curr Top Otorhinolaryngol Head Neck Surg*. 10 Doc4. doi: [10.3205/cto000077](https://doi.org/10.3205/cto000077).
- Huque T, Cowart BJ, Dankulich-Nagrudny L, Pribitkin EA, Bayley DL, Spielman AI, Feldman RS, Mackler SA, Brand JG. 2009. Sour ageusia in two individuals implicates ion channels of the ASIC and PKD families in human sour taste perception at the anterior tongue. *PLoS One*. 4(10):e7347.
- Hwang CS. 2006. Olfactory neuropathy in severe acute respiratory syndrome: report of a case. *Acta Neurol Taiwan*. 15:26–28.
- Iannilli E, Leopold DA, Hornung DE, Hummel T. 2019. Advances in understanding parosmia: an fMRI study. *ORL*. 81:185–192. doi: [10.1159/000500558](https://doi.org/10.1159/000500558).
- Iravani B, Arshamian A, Ravia A, Mishor E, Snitz K, Shushan S, Roth Y, Perl O, Honigstein D, Weissgross R, et al. 2020. Relationship between odor intensity estimates and COVID-19 prevalence prediction in a Swedish population. *Chem Senses*. 45(6): 449–456.
- Jeffreys H. 1961. *Theory of probability*. Oxford (UK): Clarendon.
- Kalva JJ, Sims CA, Puentes LA, Snyder DJ, Bartoshuk LM. 2014. Comparison of the hedonic general labeled magnitude scale with the hedonic 9-point scale. *J Food Sci*. 79:S238–S245.
- Landis BN, Hummel T, Hugentobler M, Giger R, Lacroix J. 2003. Ratings of overall olfactory function. *Chem Senses*. 28:691–694.
- Lechien J, Cabaraux P, Chiesa-estomba C, Khalife M, Plzak J, Hans S, Martiny D, Henriquez C, Hopkins C, Saussez S. 2020. Objective olfactory testing in patients presenting with sudden onset olfactory dysfunction as the first manifestation of confirmed COVID-19 infection. Preprint. *medRxiv*. doi: [10.1101/2020.04.15.20066472](https://doi.org/10.1101/2020.04.15.20066472).
- Lechien JR, Chiesa-Estomba CM, De Siati DR, Horoi M, Le Bon SD, Rodriguez A, Dequanter D, Blecic S, El Afia F, Distinguin L, et al. 2020. Olfactory and gustatory dysfunctions as a clinical presentation of mild-to-moderate

- forms of the coronavirus disease (COVID-19): a multicenter European study. *Eur Arch Otorhinolaryngol*. 277(8):2251–2261.
- Lee MD, Wagenmakers E-J. 2013. *Bayesian modeling for cognitive science: a practical course*. New York (NY): Cambridge University Press.
- Lê S, Josse J, Husson F. 2008. FactoMineR: an R package for multivariate analysis. *J Stat Softw*. 25:1–18.
- Lötsch J, Hummel T. 2006. The clinical significance of electrophysiological measures of olfactory function. *Behav Brain Res*. 170:78–83. doi: [10.1016/j.bbr.2006.02.013](https://doi.org/10.1016/j.bbr.2006.02.013).
- Lötsch J, Hummel T. 2019. Clinical usefulness of self-rated olfactory performance—a data science-based assessment of 6000 patients. *Chem Senses*. 44(6):357–364.
- Lugaz O, Pillias AM, Faurion, A. 2002. A new specific ageusia: some humans cannot taste L-glutamate. *Chem Senses*. 27(2):105–115.
- Mao L, Jin H, Wang M, Hu Y, Chen S, He Q, Chang J, Hong C, Zhou Y, Wang D, et al. 2020. Neurologic manifestations of hospitalized patients with coronavirus disease 2019 in Wuhan, China. *JAMA Neurol*. 77(6):683–690.
- Marwick B. 2019. rrtools: Creates a reproducible research compendium (R package version 0.1.0) [Computer software manual]. Available from <https://github.com/benmarwick/rrtools> (accessed on April 30, 2020).
- McDonald ST, Bolliet DA, Hayes JE. 2016. *Chemesthesis: chemical touch in food and eating*. West Sussex (UK): John Wiley & Sons. doi: [10.1002/9781118951620](https://doi.org/10.1002/9781118951620).
- Menni C, Valdes A, Freydin MB, Ganesh S, Moustafa JE-S, Visconti A, Hysi P, Bowyer RCE, Mangino M, Falchi M, et al. 2020. Loss of smell and taste in combination with other symptoms is a strong predictor of COVID-19 infection. *Nat Med*. In press. doi: [10.1038/s41591-020-0916-2](https://doi.org/10.1038/s41591-020-0916-2).
- Moein ST, Hashemian SM, Mansourafshar B, Khorram-Tousi A, Tabarsi P, Doty RL. 2020. Smell dysfunction: a biomarker for COVID-19. *Int Forum Allergy Rhinol*. In press. doi: [10.1002/alr.22587](https://doi.org/10.1002/alr.22587).
- Morey RD, Rouder JN. 2018. BayesFactor: computation of Bayes factors for common designs. Available from <https://cran.r-project.org/package=BayesFactor> (accessed on April 30, 2020).
- Moshontz H, Campbell L, Ebersole CR, IJzerman H, Urry HL, Forscher PS, Grahe JE, McCarthy RJ, Musser ED, Antfolk J, et al. 2018. The Psychological Science Accelerator: advancing psychology through a distributed collaborative network. *Adv Methods Pract Psychol Sci*. 1:501–515.
- Nordin S, Brämerson A. 2008. Complaints of olfactory disorders: epidemiology, assessment and clinical implications. *Curr Opin Allergy Clin Immunol*. 8:10–15. doi: [10.1097/ACI.0b013e3282f3f473](https://doi.org/10.1097/ACI.0b013e3282f3f473).
- Oleszkiewicz A, Kunkel F, Larsson M, Hummel T. 2020. Consequences of undetected olfactory loss for human chemosensory communication and well-being. *Philos Trans R Soc Lond B Biol Sci*. 375:20190265.
- Patel ZM. 2020. Correspondence: Reflections and new developments within the COVID-19 pandemic. *Int Forum Allergy Rhinol*. 10(5):587–588.
- Patil I, Powell C. 2018. Ggstatsplot: “ggplot2” based plots with statistical details. Available from <https://cran.r-project.org/web/packages/ggstatsplot> (accessed on April 30, 2020).
- Pellegrino R, Cooper KW, Di Pizio A, Joseph PV, Bhutani S, Parma V. 2020. Corona viruses and the chemical senses: past, present, and future. *Chem Senses*. 45(6):415–422.
- Pellegrino R, Walliczek-Dworschak U, Winter G, Hull D, Hummel T. 2017. Investigation of chemosensitivity during and after an acute cold. *Int Forum Allergy Rhinol*. 7(2):185–191.
- Pilkova L, Novakova M, Pokorný J. 1991. Naming and identification of tastes in aqueous solutions. *Nahrung*. 35(9):999–1002.
- Rawal S, Hoffman HJ, Honda M, Huedo-Medina TB, Duffy VB. 2015. The taste and smell protocol in the 2011–2014 US National Health and Nutrition Examination Survey (NHANES): test–retest reliability and validity testing. *Chemosens Percept*. 8(3):38–148.
- Reden J, Maroldt H, Fritz A, Zahnert T, Hummel T. 2007. A study on the prognostic significance of qualitative olfactory dysfunction. *Eur Arch Otorhinolaryngol*. 264:139–144. doi: [10.1007/s00405-006-0157-0](https://doi.org/10.1007/s00405-006-0157-0).
- Ren Y, Yang L, Guo Y, Xutao M, Li K, Wei Y. 2012. Intranasal trigeminal chemosensitivity in patients with postviral and post-traumatic olfactory dysfunction. *Acta Otolaryngol*. 132:974–980.
- Rombaux P, Martinage S, Huart C, Collet S. 2009. Post-infectious olfactory loss: a cohort study and update. *B-ENT*. 8:89–95.
- Rozin P. 1982. “Taste-smell confusions” and the duality of the olfactory sense. *Percept Psychophys*. 31:397–401. doi: [10.3758/BF03202667](https://doi.org/10.3758/BF03202667).
- Rubin DI, Daube JR. 1999. Subacute sensory neuropathy associated with Epstein-Barr virus. *Muscle Nerve*. 22:1607–1610.
- Schönbrodt FD, Wagenmakers E-J. 2018. Bayes factor design analysis: planning for compelling evidence. *Psychon Bull Rev*. 25:128–142.
- Schönbrodt FD, Wagenmakers E-J, Zehetleitner M, Perugini M. 2017. Sequential hypothesis testing with Bayes factors: efficiently testing mean differences. *Psychol Methods*. 22:322–339.
- Shepherd GM. 2006. Smell images and the flavour system in the human brain. *Nature*. 444:316–321. doi: [10.1038/nature05405](https://doi.org/10.1038/nature05405)
- Soler ZM, Patel ZM, Turner JH, Holbrook EH. 2020. A primer on viral-associated olfactory loss in the era of COVID-19. *Int Forum Allergy Rhinol*. 10(7):814–820.
- Spence C, Auvray M, Smith B. 2014. Confusing tastes with flavours. In: Stokes D, Matthen M, Biggs S, editors. *Perception and its modalities*. New York (NY): Oxford University Press. p. 247–274.
- Sungnak W, Huang N, Bécavin C, Berg M, Queen R, Litvinukova M, Talavera-López C, Maatz H, Reichart D, Sampaziotis F, et al. 2020. SARS-CoV-2 entry factors are highly expressed in nasal epithelial cells together with innate immune genes. *Nat Med*. 26:681–687.
- Team R Core Development. 2013. R: a language and environment for statistical computing. Available from <http://www.r-project.org/> (accessed on April 30, 2020).
- Varga Z, Flammer AJ, Steiger P, Haberecker M, Andermatt R, Zinkernagel AS, Mehra MR, Schuepbach RA, Ruschitzka F, Moch H. 2020. Endothelial cell infection and endotheliitis in COVID-19. *Lancet*. 395(10234):1417–1418.
- Veldhuizen M, Parma V, Reed D, Liuzza MT. 2020. GCCR001—quantifying smell, taste and chemesthesis changes in COVID-19: a multi-national study. OSF. Available from [osf.io/auhs8](https://osf.io/auhs8) (accessed on April 30, 2020).
- Venkatakrishnan A, Puranik A, Anand A, Zemmour D, Yao X, Wu X, Chilaka R, Murakowski DK, Standish K, Raghunathan B, et al. 2020. Knowledge synthesis from 100 million biomedical documents augments the deep expression profiling of coronavirus receptors. *eLife*. In press. doi: [10.7554/eLife.58040](https://doi.org/10.7554/eLife.58040).
- Vetter P, Vu DL, L’Huillier AG, Schibler M, Kaiser L, Jacquerioz F. 2020. Clinical features of COVID-19. *BMJ*. 369:m1470.
- Welge-Lüssen A, Dörig P, Wolfensberger M, Krone F, Hummel T. 2011. A study about the frequency of taste disorders. *J Neurol*. 258(3):386–392.
- Welge-Lüssen A, Hummel T, Stojan T, Wolfensberger M. 2005. What is the correlation between ratings and measures of olfactory function in patients with olfactory loss? *Am J Rhinol*. 19:567–571. doi: [10.1177/194589240501900606](https://doi.org/10.1177/194589240501900606).
- Workman AD, Welling DB, Carter BS, Curry WT, Holbrook EH, Gray ST, Scangas GA, Bleier BS. 2020. Endonasal instrumentation and aerosolization risk in the era of COVID-19: simulation, literature review, and proposed mitigation strategies. *Int Forum Allergy Rhinol*. 10(7):798–805.
- World Health Organization. 2020. Q&A on coronaviruses (COVID-19). Available from <https://www.who.int/news-room/q-a-detail/q-a-coronaviruses> (accessed on May 1, 2020).
- Yan CH, Faraji F, Prajapati DP, Boone CE, DeConde AS. 2020. Association of chemosensory dysfunction and COVID-19 in patients presenting with influenza-like symptoms. *Int Forum Allergy Rhinol*. 10(7):806–813.
- Yan CH, Faraji F, Prajapati DP, Ostrander BT, DeConde AS. 2020. Self-reported olfactory loss associates with outpatient clinical course in COVID-19. *Int Forum Allergy Rhinol*. 10(7):821–831.
- Yu H. 2017. Bootcluster: bootstrapping estimates of clustering stability. Available from <https://cran.r-project.org/package=bootcluster> (accessed on April 30, 2020).
- Zhu N, Zhang D, Wang W, Li X, Yang B, Song J, Zhao X, Huang B, Shi W, Lu R, et al. 2020. A novel coronavirus from patients with pneumonia in China, 2019. *N Engl J Med*. 382:727–733. doi: [10.1056/NEJMoa2001017](https://doi.org/10.1056/NEJMoa2001017).