

North Atlantic climate far more predictable than models imply

Article

Supplemental Material

Smith, D. M., Scaife, A. A., Eade, R., Athanasiadis, P., Bellucci, A., Bethke, I., Bilbao, R., Borchert, L. F., Caron, L.-P., Counillon, F., Danabasoglu, G., Delworth, T., Doblas-Reyes, F. J., Dunstone, N. J., Estella-Perez, V., Flavoni, S., Hermanson, L., Keenlyside, N., Kharin, V., Kimoto, M., Merryfield, W. J., Mignot, J., Mochizuki, T., Modali, K., Monerie, P.-A. ORCID: <https://orcid.org/0000-0002-5304-9559>, Müller, W. A., Nicoli, D., Ortega, P., Pankatz, K., Pohlmann, H., Robson, J. ORCID: <https://orcid.org/0000-0002-3467-018X>, Ruggieri, P., Sospedra-Alfonso, R., Swingedouw, D., Wang, Y., Wild, S., Yeager, S., Yang, X. and Zhang, L. (2020) North Atlantic climate far more predictable than models imply. *Nature*, 583. 7818. ISSN 0028-0836 doi: 10.1038/s41586-020-2525-0 Available at <https://centaur.reading.ac.uk/91527/>

It is advisable to refer to the publisher's version if you intend to cite from the work. See [Guidance on citing](#).

To link to this article DOI: <http://dx.doi.org/10.1038/s41586-020-2525-0>

Publisher: Nature Publishing Group

All outputs in CentAUR are protected by Intellectual Property Rights law, including copyright law. Copyright and IPR is retained by the creators or other copyright holders. Terms and conditions for use of this material are defined in the [End User Agreement](#).

www.reading.ac.uk/centaur

CentAUR

Central Archive at the University of Reading

Reading's research outputs online

Supplementary Information for

Climate models underpredict North Atlantic atmospheric circulation changes

D. M. Smith¹, A. A. Scaife^{1,2}, R. Eade¹, P. Athanasiadis³, A. Bellucci³, I. Bethke^{4,5}, R. Bilbao⁶, L. F. Borchert⁷, L.-P. Caron⁶, F. Counillon^{4,5}, G. Danabasoglu⁸, T. Delworth⁹, F. J. Doblas-Reyes^{6,10}, N. J. Dunstone¹, V. Estella-Perez⁷, S. Flavoni⁷, L. Hermanson¹, N. Keenlyside^{4,5}, V. Kharin¹¹, M. Kimoto¹², W. J. Merryfield¹¹, J. Mignot⁷, T. Mochizuki^{13,14}, K. Modali¹⁵, P.-A. Monerie¹⁶, W. A. Müller¹⁵, D. Nicoli³, P. Ortega⁶, K. Pankatz¹⁷, H. Pohlmann^{15,17}, J. Robson¹⁶, P. Ruggieri³, R. Sospedra-Alfonso¹¹, D. Swingedouw¹⁸, Y. Wang⁴, S. Wild⁶, S. Yeager⁸, X. Yang⁹ and L. Zhang⁹

¹Met Office Hadley Centre, FitzRoy Road, Exeter, EX1 3PB, UK.

²College of Engineering, Mathematics and Physical Sciences, Exeter University, UK.

³Centro Euro-Mediterraneo sui Cambiamenti Climatici, Bologna, Italy

⁴Nansen Environmental and Remote Sensing Center, Bjerknes Centre for Climate Research, Bergen, Norway

⁵Geophysical Institute, University of Bergen and Bjerknes Centre for Climate Research, Bergen, Norway

⁶Barcelona Supercomputing Center, Jordi Girona 29 - 08034 Barcelona, Spain

⁷Sorbonne Universites, LOCEAN Laboratory, Institut Pierre Simon Laplace (IPSL), Paris, France

⁸National Center for Atmospheric Research, Boulder, CO, USA

⁹Geophysical Fluid Dynamics Laboratory, Princeton University, Princeton, NJ, USA

¹⁰ICREA, Barcelona, Spain

¹¹Canadian Centre for Climate Modelling and Analysis, Environment and Climate Change Canada, Victoria, British Columbia, Canada

¹²Atmosphere and Ocean Research Institute, University of Tokyo, Kashiwa, Japan

¹³Department of Earth and Planetary Sciences, Kyushu University, Fukuoka, Japan

¹⁴Japan Agency for Marine-Earth Science and Technology, Yokohama, Japan

¹⁵Max-Planck-Institut für Meteorologie, Bundesstraße 53, 20146 Hamburg, Germany.

¹⁶National Centre for Atmospheric Science-Climate, Department of Meteorology, University of Reading, Reading RG6 6BB, UK

¹⁷Deutscher Wetterdienst, Bernhard-Nocht-Str. 76, Hamburg, Germany

¹⁸CNRS-EPOC, Universite de Bordeaux, Pessac, France

This PDF file includes:

Supplementary Figures S1 to S5

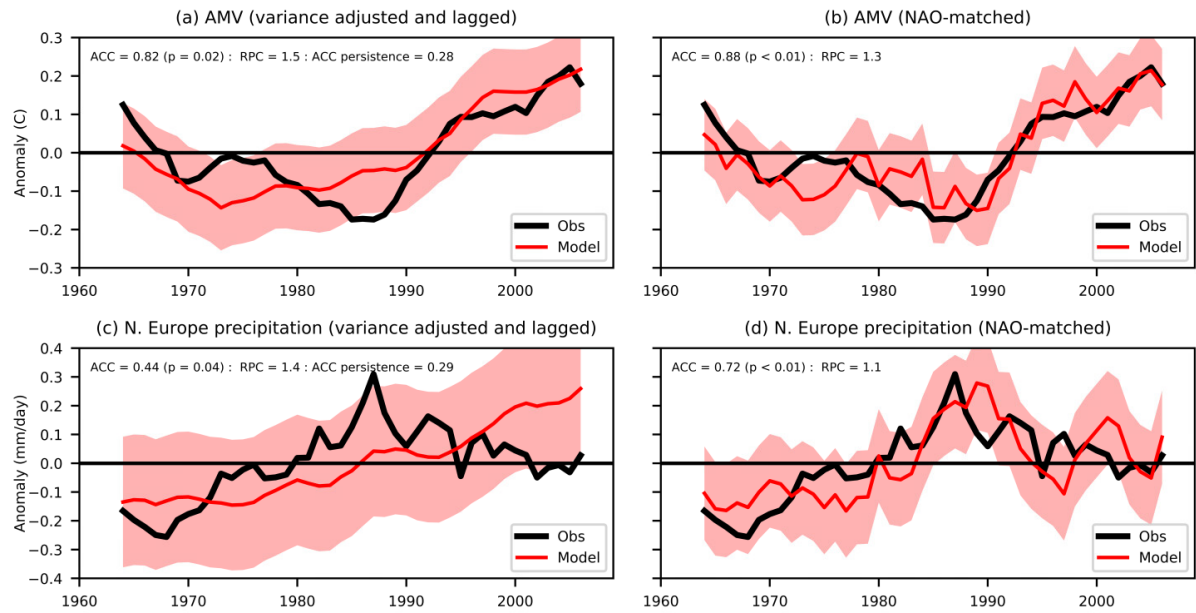


Figure S1: Improvement of NAO-matching over variance adjustment. Panels are as Figure 2 c-f but the lagged forecasts in (a) and (c) are additionally variance adjusted. Variance adjustment does not affect the correlation skill, but the uncertainties (red shading) capture the observations better, especially for N. Europe precipitation (compare Figure S1c with Figure 2e). However, NAO-matching clearly improves predictions of the timing of the AMV minimum in the late 1980s and the subsequent rapid warming, and captures the observed increase in N. Europe precipitation from the 1960s to late 1980s and decrease thereafter.

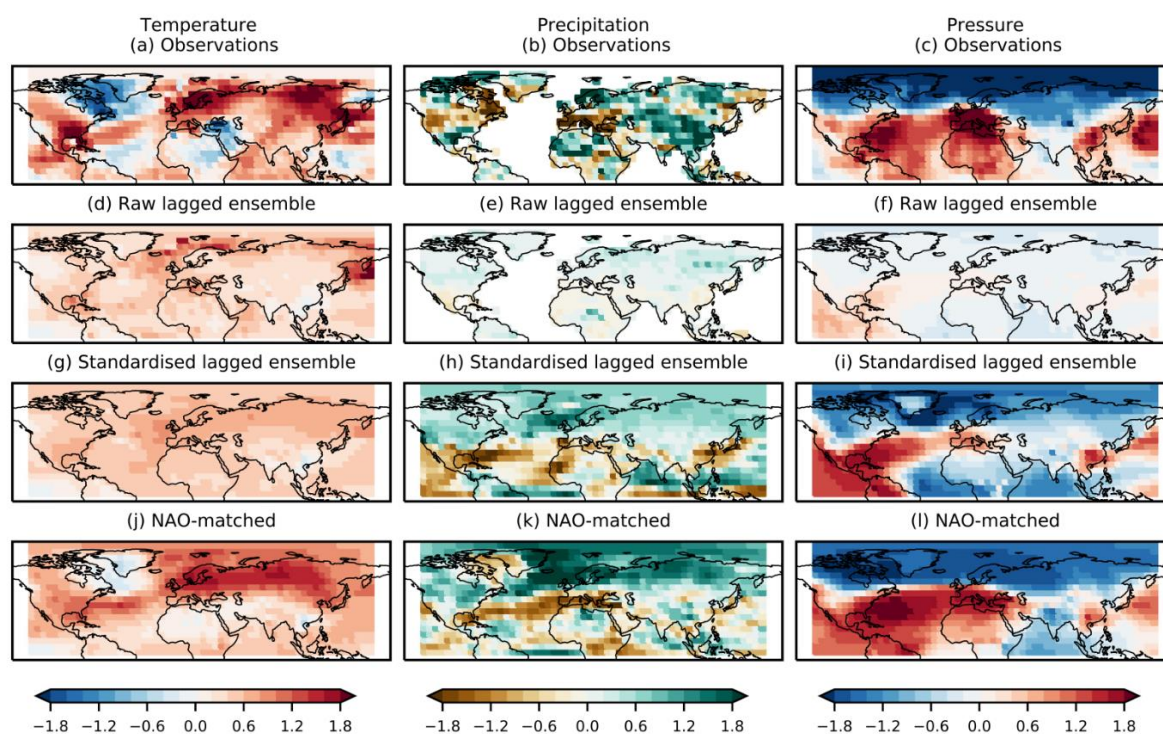


Figure S2: Effect of NAO-matching on trends during Increasing NAO period. As Figure 3 but for linear trends over hindcast start dates 1973 to 1989 inclusive. NAO-matching clearly improves the cooling trend over the Labrador Sea and the warming trend over Eurasia, as well as the drying/wetting trends over southern/northern Europe.

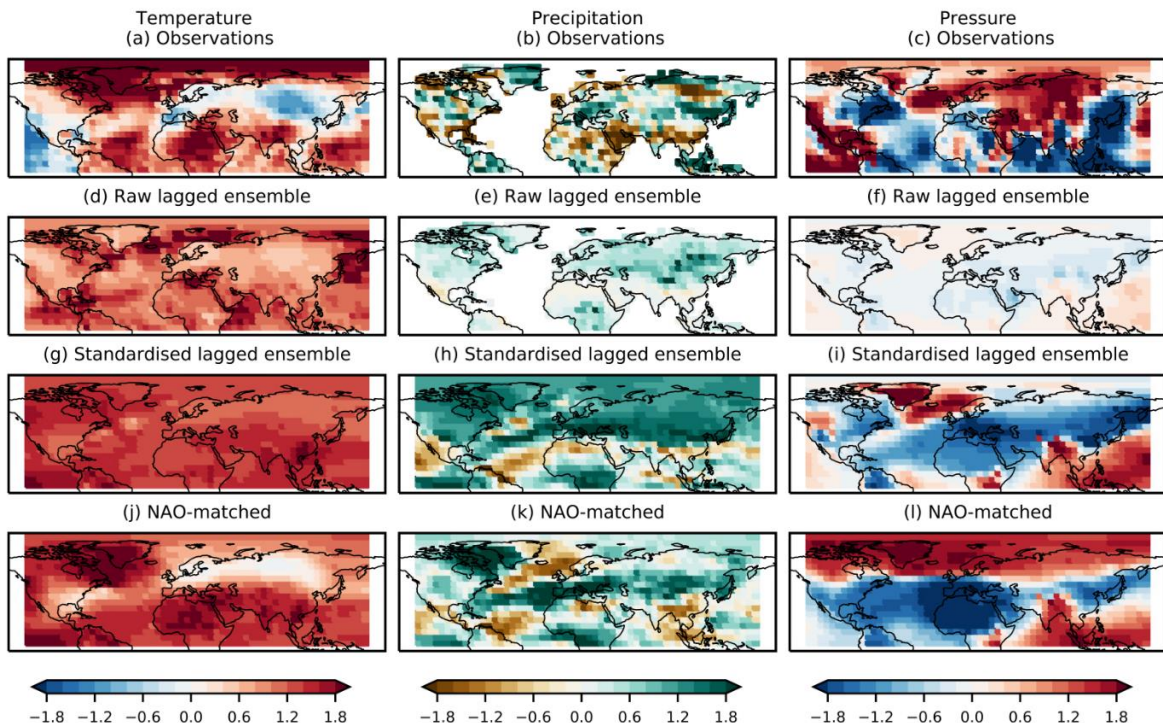


Figure S3: Effect of NAO-matching on trends during decreasing NAO period. As Figure 3 but for linear trends over hindcast start dates 1989 to 2005 inclusive. NAO-matching improves the cooling trend over northern Eurasia, drying/wetting over northern/southern Europe, and the increasing pressure trend across most of the Arctic.

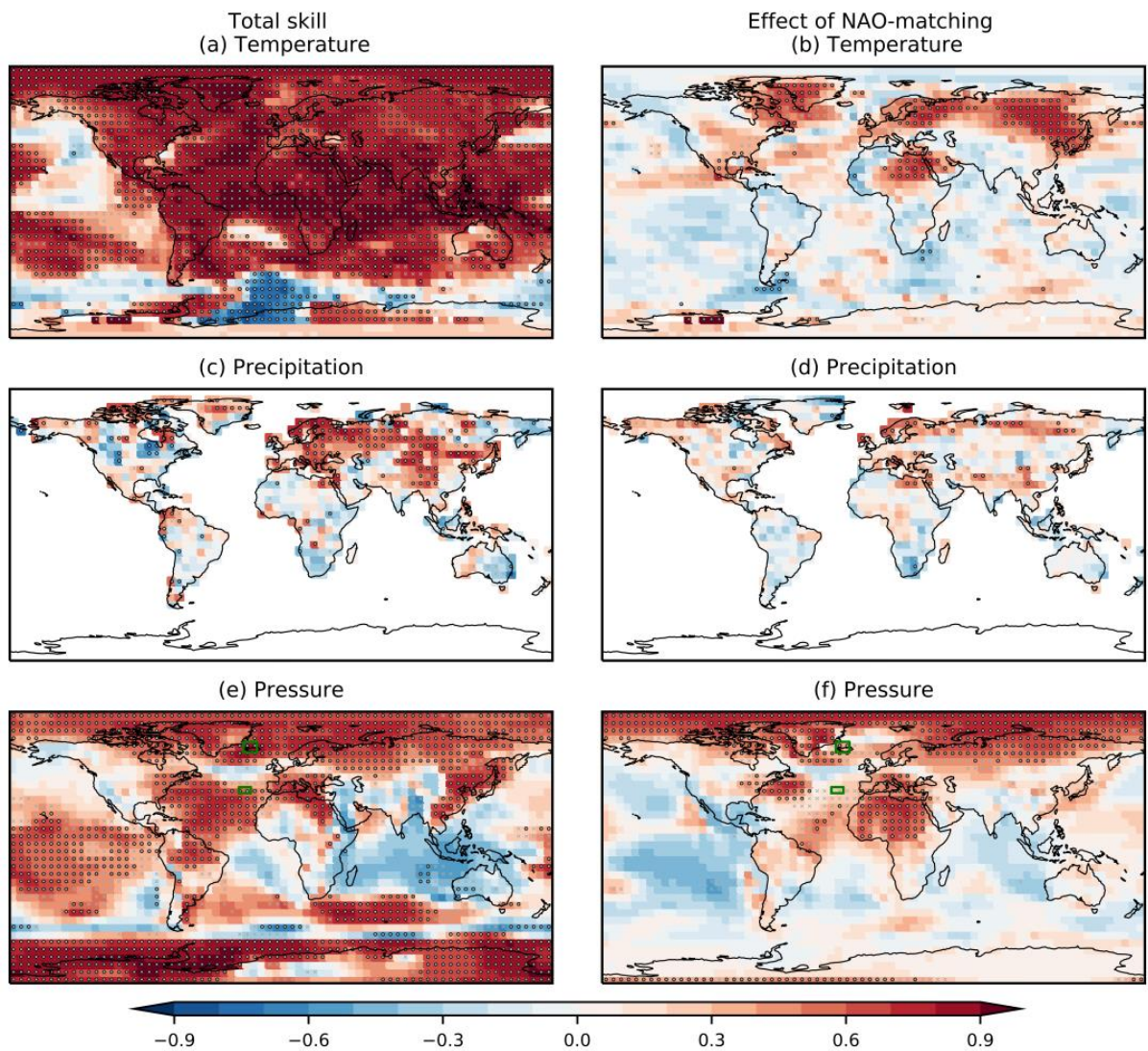


Figure S4: Effect of NAO-matching on skill. Anomaly correlation skill (left panels) of 20 member NAO-matched ensemble mean, and the effect of NAO-matching (right panels), for year 2-9 boreal winter (DJFM) forecasts of (a,b) near-surface temperature, (c,d) precipitation and (e,f) mean sea level pressure (mslp). The effect of NAO-matching on skill is computed as the partial correlation between observed and forecast residuals after regressing out the lagged ensemble mean forecast (ref 19), thereby focussing on the variability not already captured by the lagged ensemble mean. Improvements from NAO-matching are consistent with the NAO-related quadrupole pattern affecting eastern North America, Greenland, western Europe, northern Africa, Eurasia, China and the Arctic. Despite the use of fewer members (20 in the NAO-matched ensemble compared to 676 in the lagged ensemble) skill is not significantly degraded in most other regions. Negative mslp skill in the Indian Ocean could be related to inconsistencies in initialisation of surface temperature and atmospheric circulation as discussed previously (ref 19).

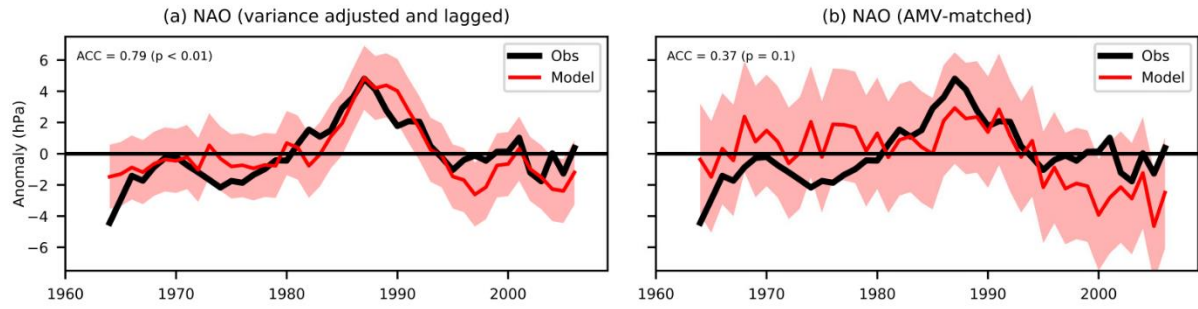


Figure S5: NAO not solely driven by AMV. (a) Variance adjusted lagged ensemble forecasts of the NAO (as Figure 2b, red curve showing ensemble mean with shading showing 5-95% confidence interval diagnosed from the error variance). (b) As (a) but for AMV-matched forecasts. AMV-matching is the same procedure as NAO-matching (see Methods) except that the 20 ensemble members are selected based on AMV instead of NAO. If the NAO signal were solely driven by AMV then selecting the most skilful AMV ensemble members by AMV-matching would be expected to increase the NAO skill. However, AMV-matching clearly reduces the NAO skill (ACC reduces from 0.79, $p < 0.01$, to 0.37, $p = 0.1$). In contrast, NAO-matching clearly improves the forecasts of AMV (Figure 2c and d). We therefore conclude that the NAO signal is not solely driven by AMV.